



**Pymble Ladies  
College- Grey  
House Precinct  
SSD-17424905**

**Presentation to the Independent Planning  
Commission**



# SITE LOCATION

## PYMBLE LADIES COLLEGE –GREY HOUSE PRECINCT, PYMBLE

### PLC campus location:

- Pymble in the Ku-ring-gai LGA
- 19 kilometres (km) north-west of Sydney Central Business District (CBD), 8km from the Chatswood CBD and 200 metres (m) from Pymble train station

### PLC campus address:

- 20 Avon Road, Pymble (within existing Pymble Ladies College Campus)
- Lot 1 DP 69541

### Zoning:

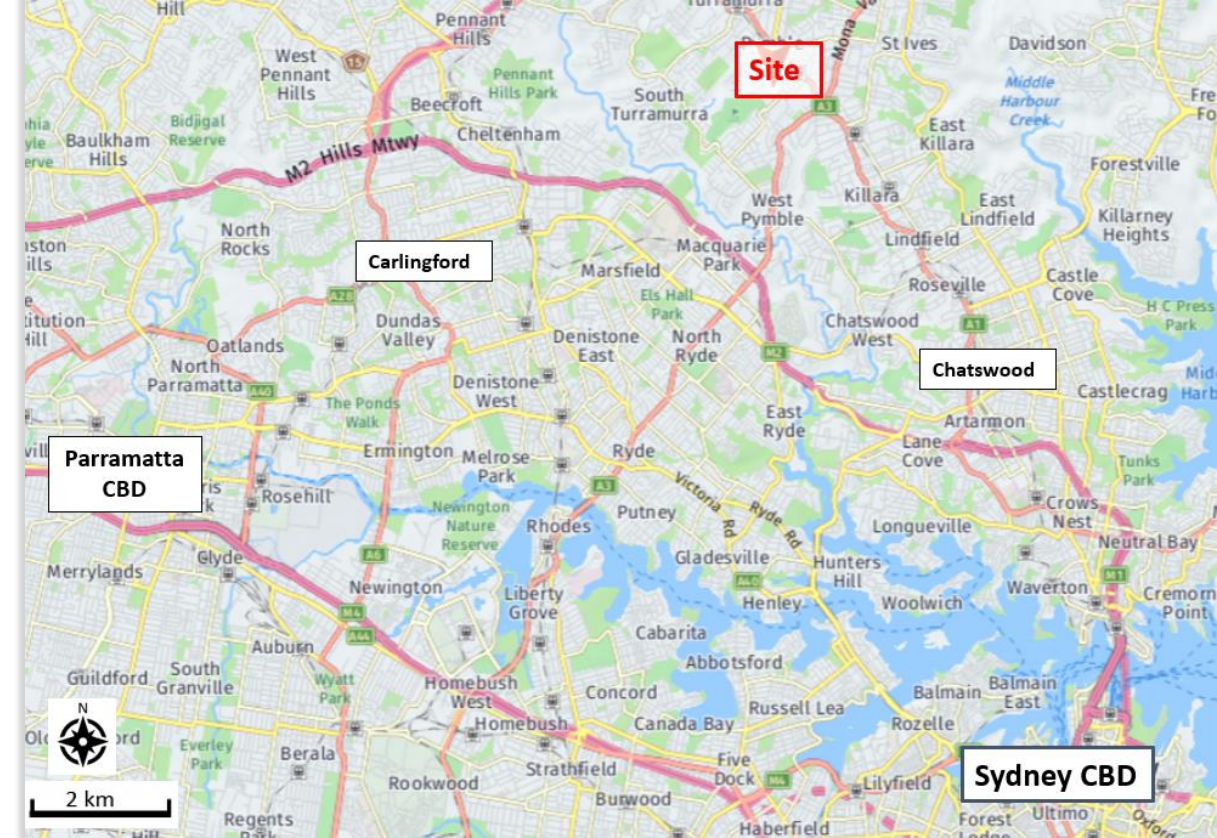
- SP2 Infrastructure (KLEP 2015)

### PLC campus area:

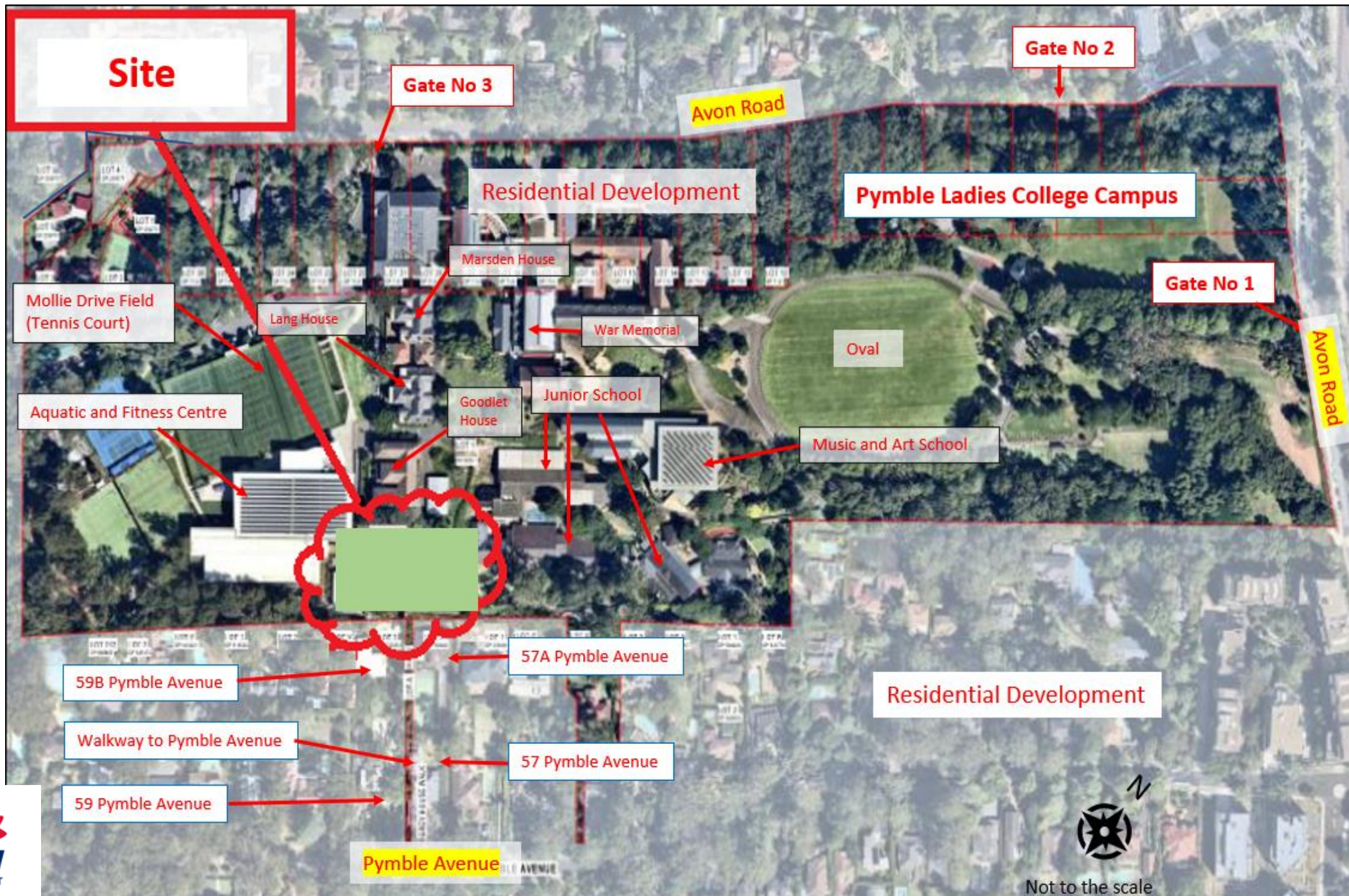
- 20ha

Development site area:

0.3ha





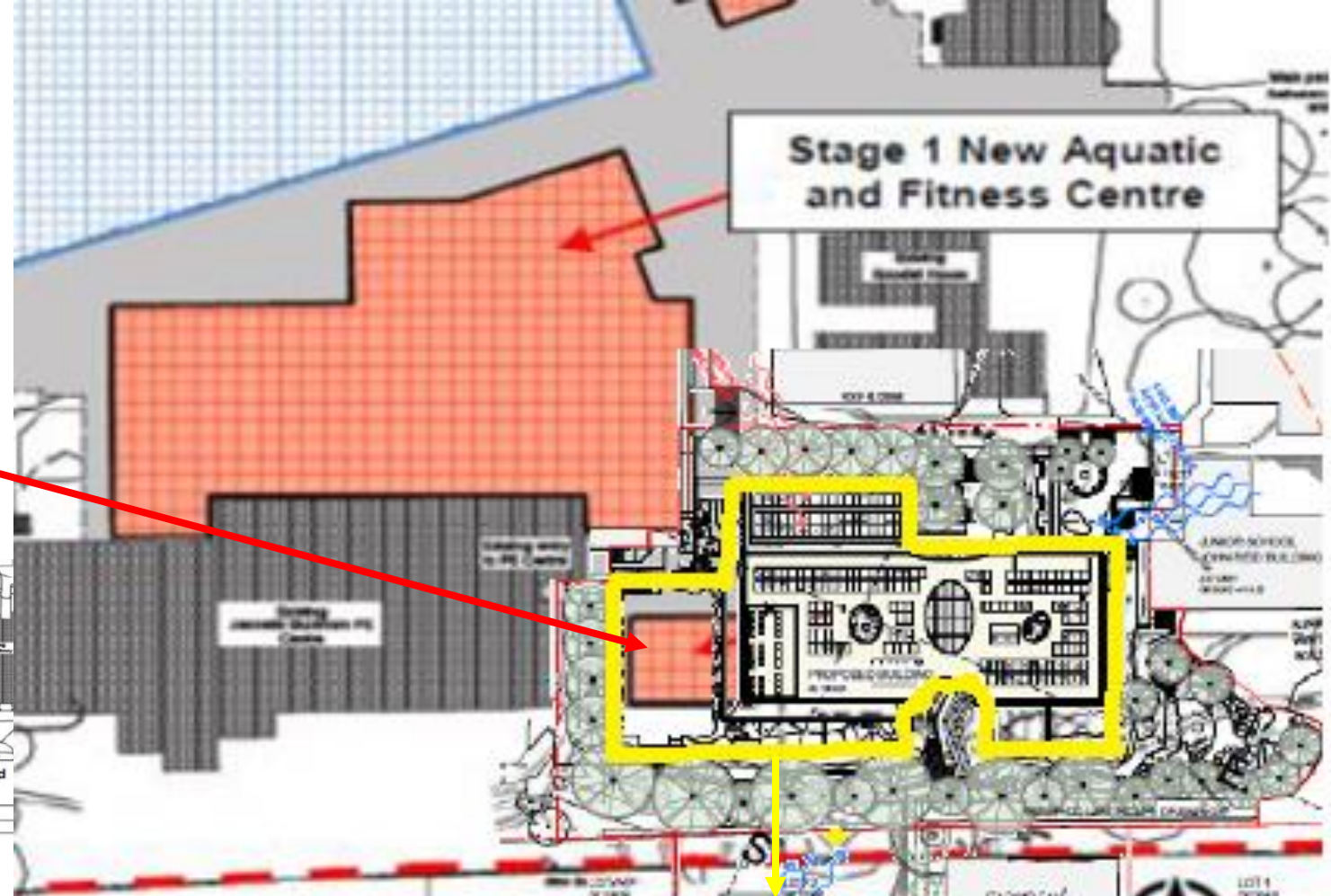




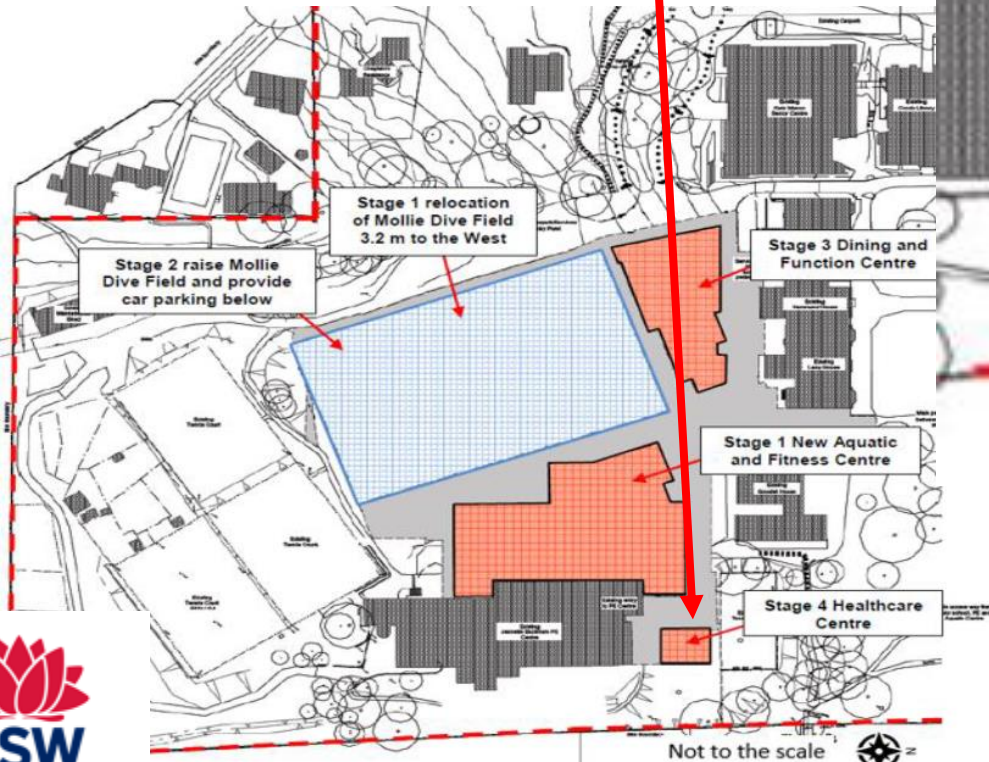


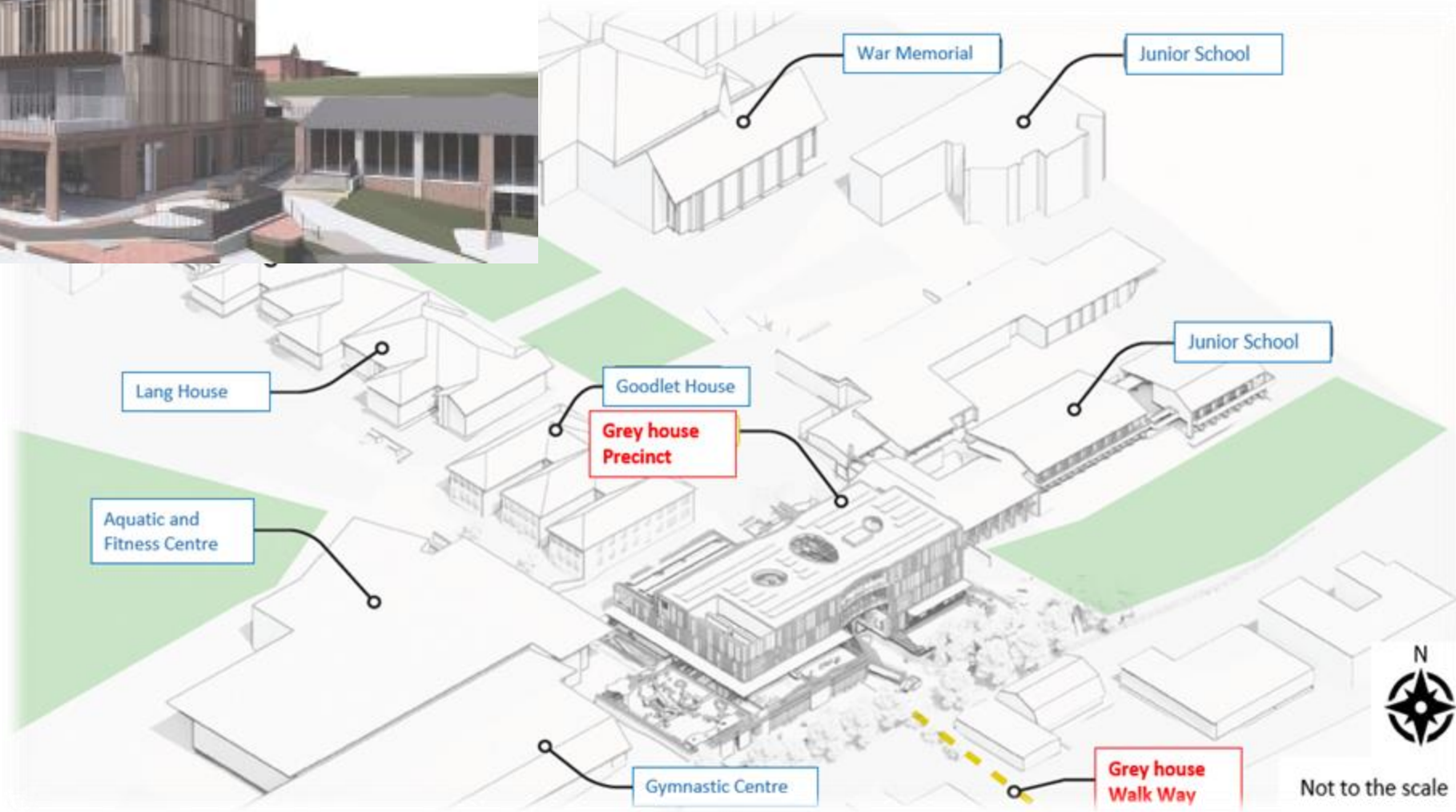


Inconsistency with the Stage 4 of the Masterplan approved under SSD-5314.



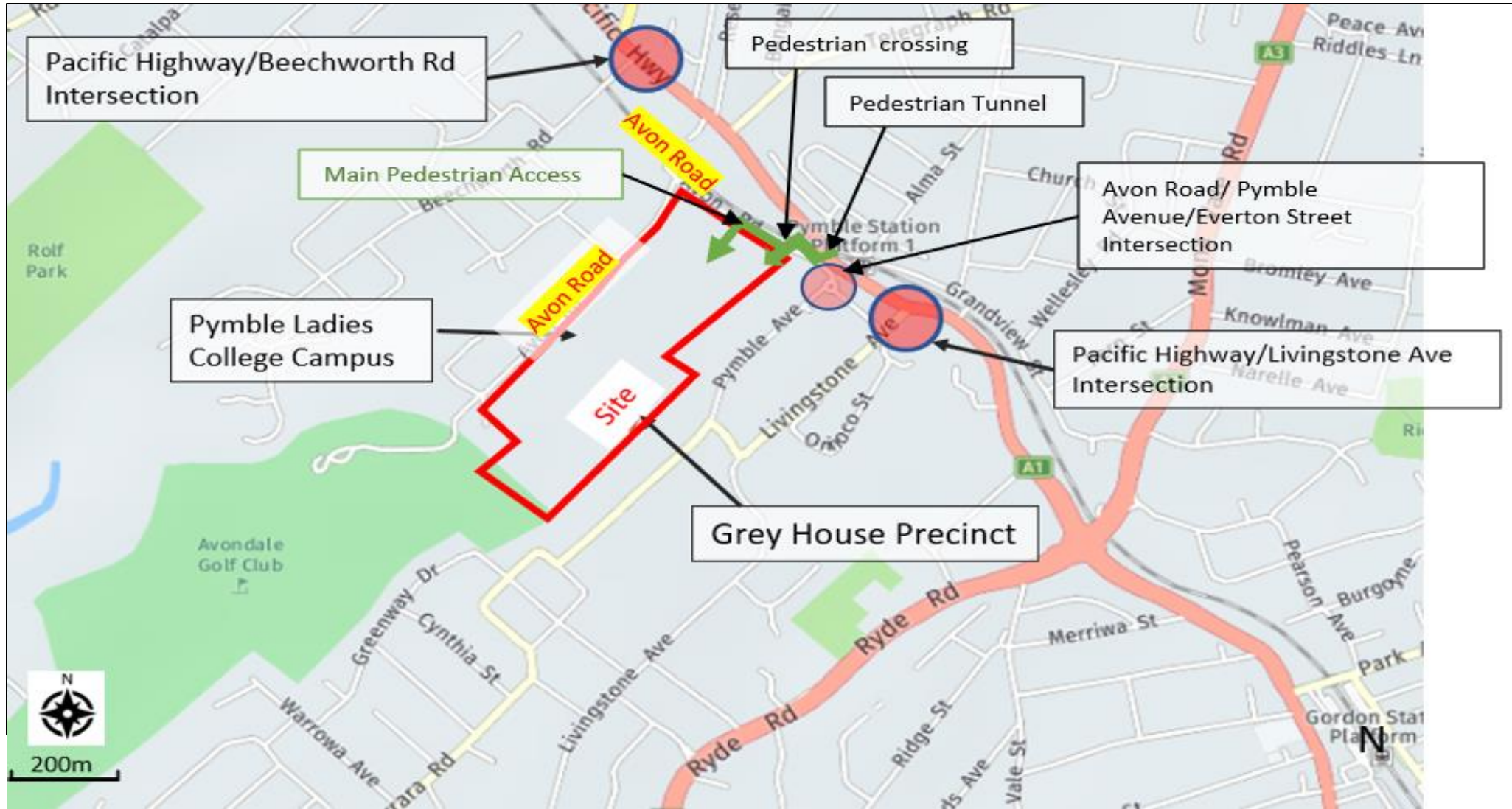
Proposed GHP building footprint





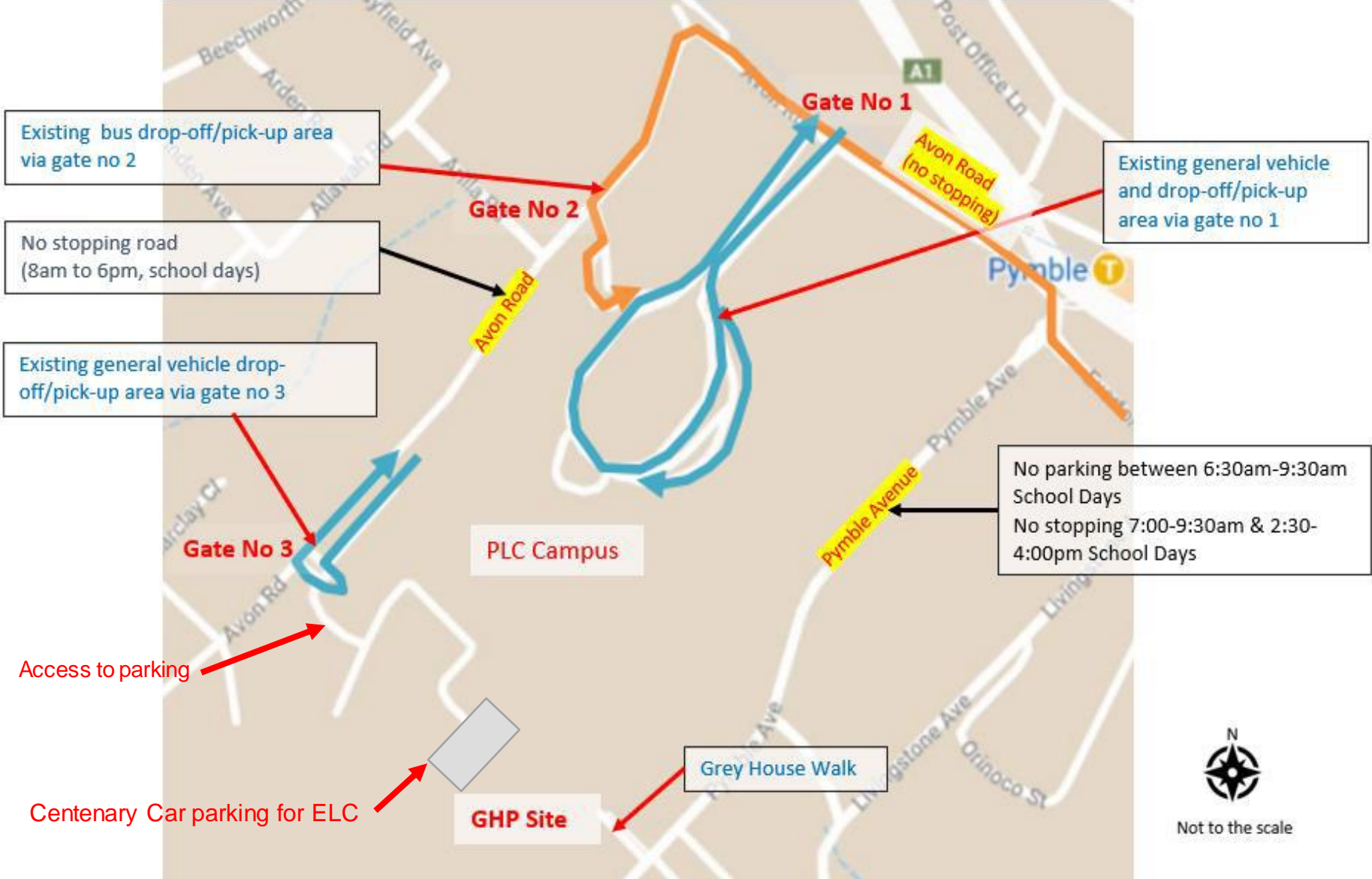


# TRAFFIC AND PARKING

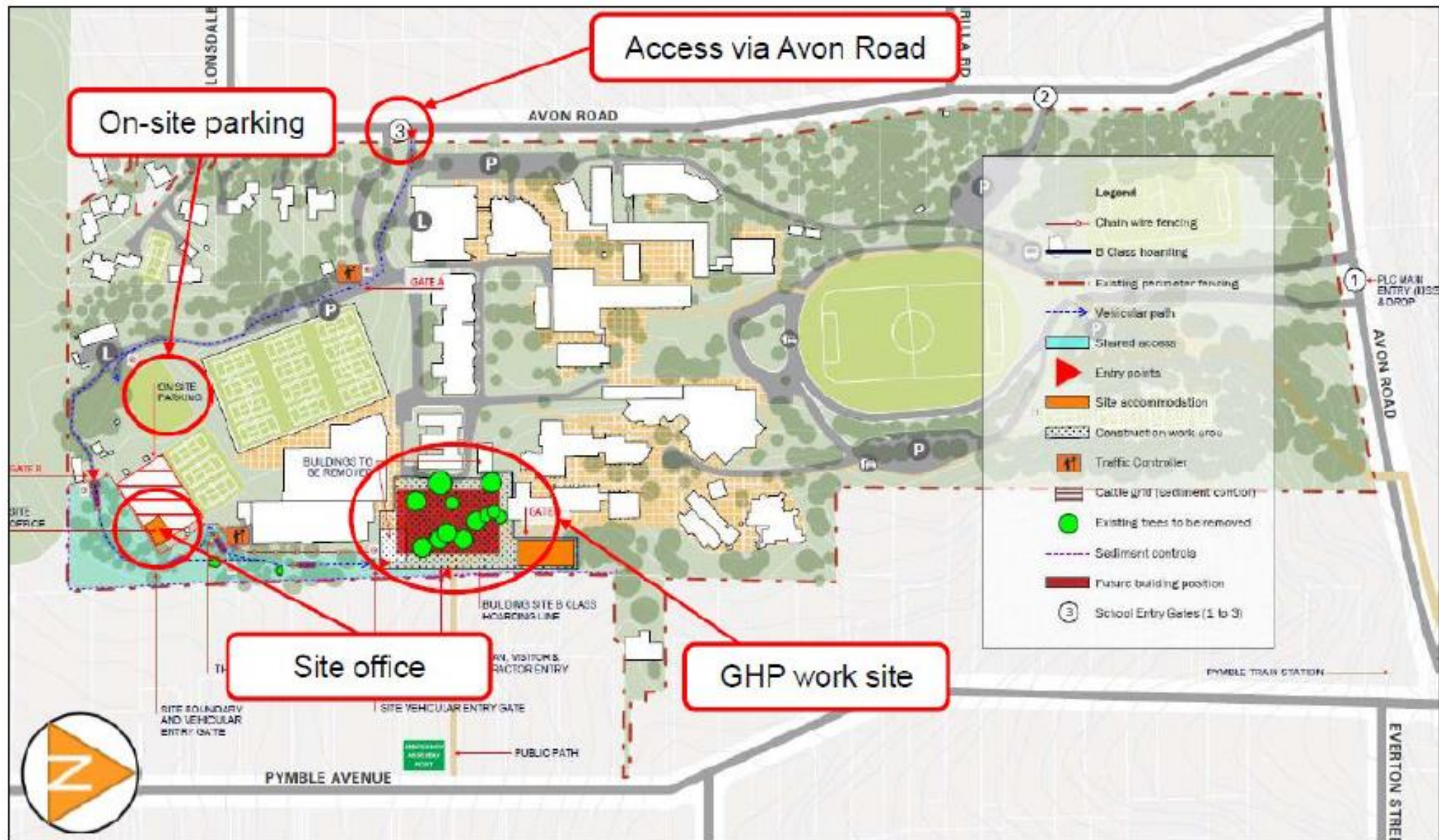


# Traffic and parking

drop-off/pick-up (existing)



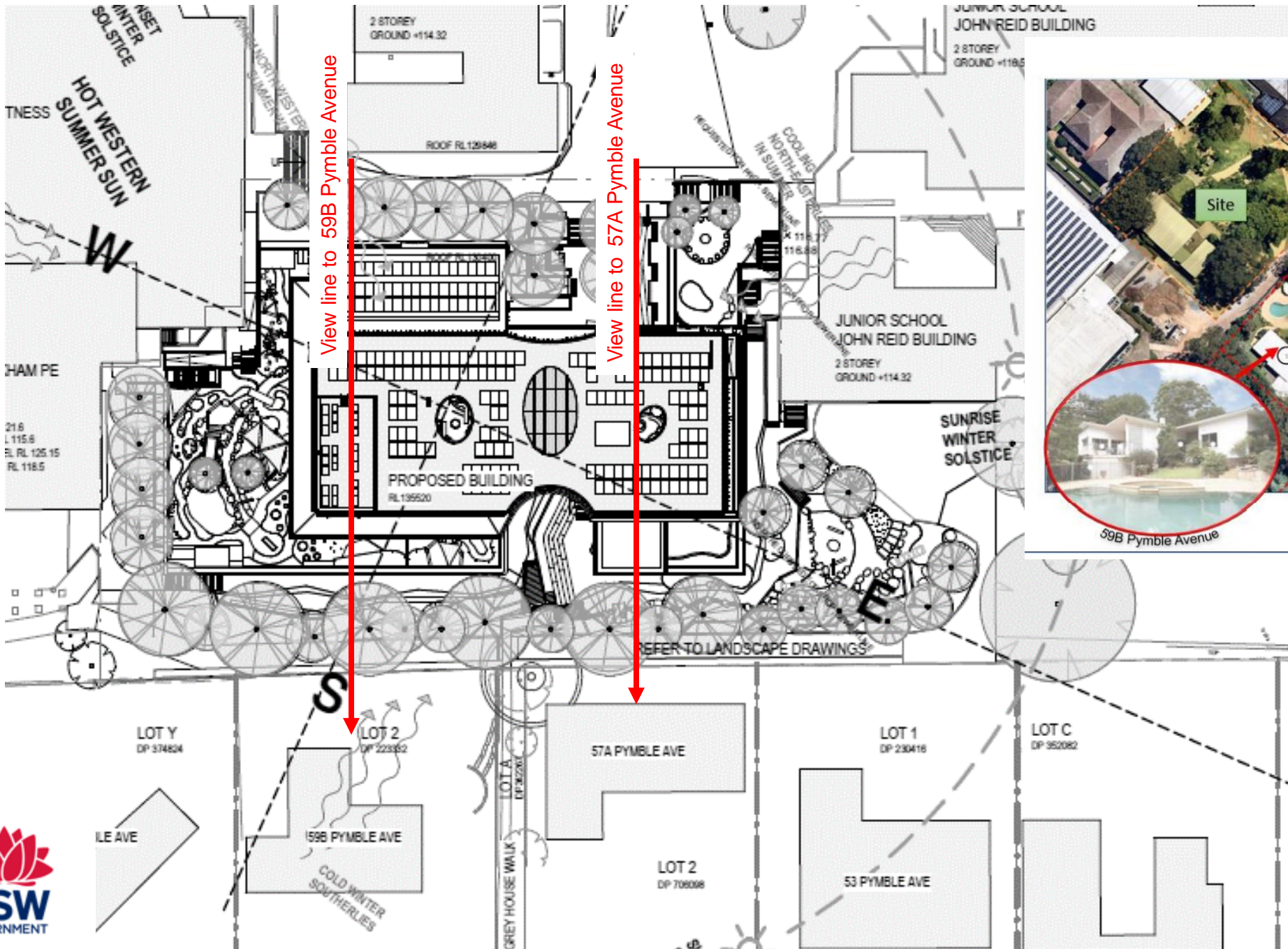




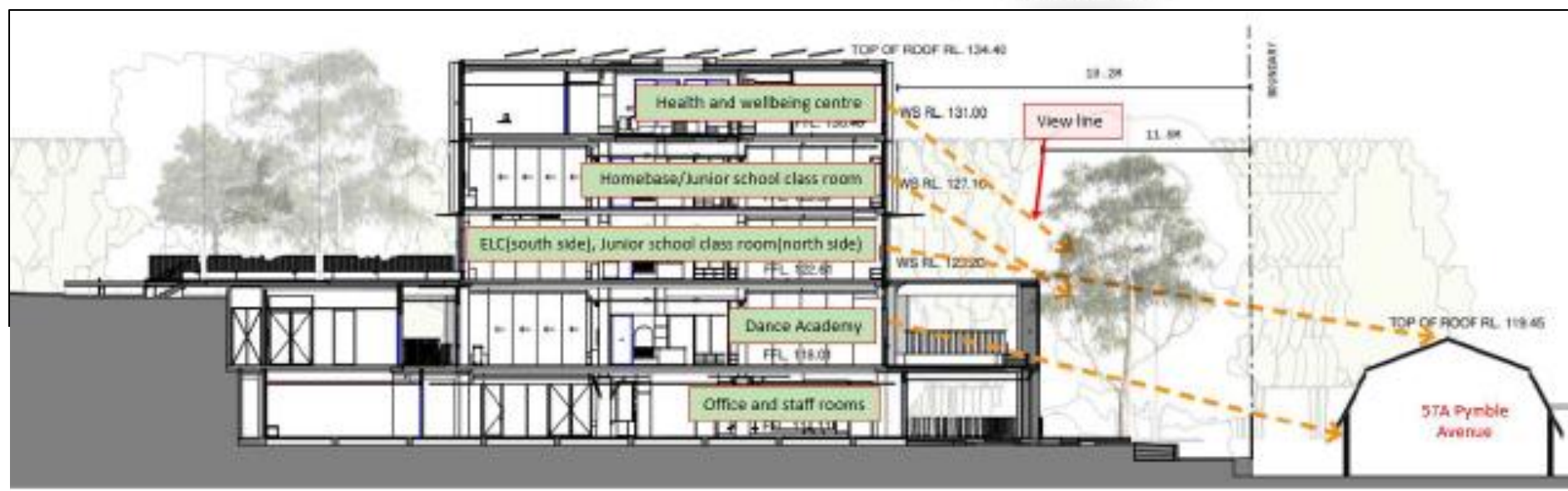
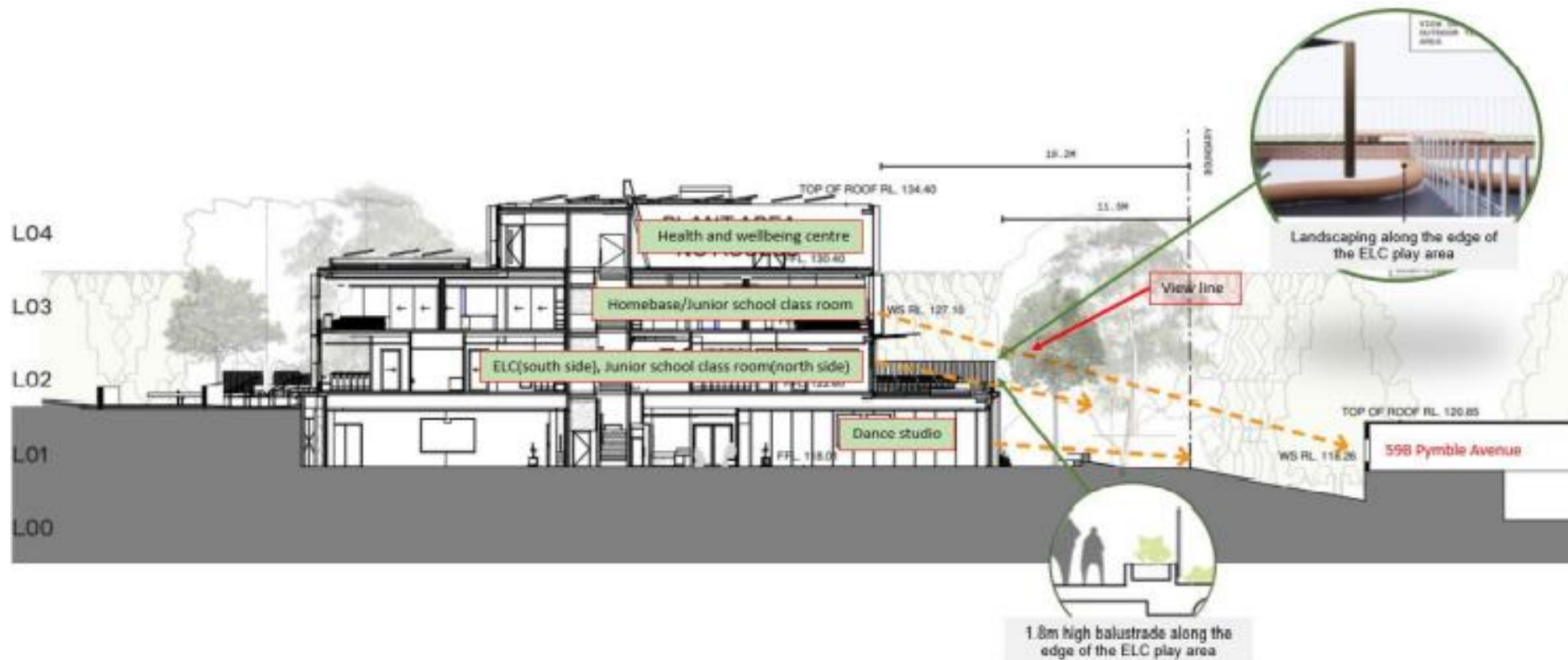






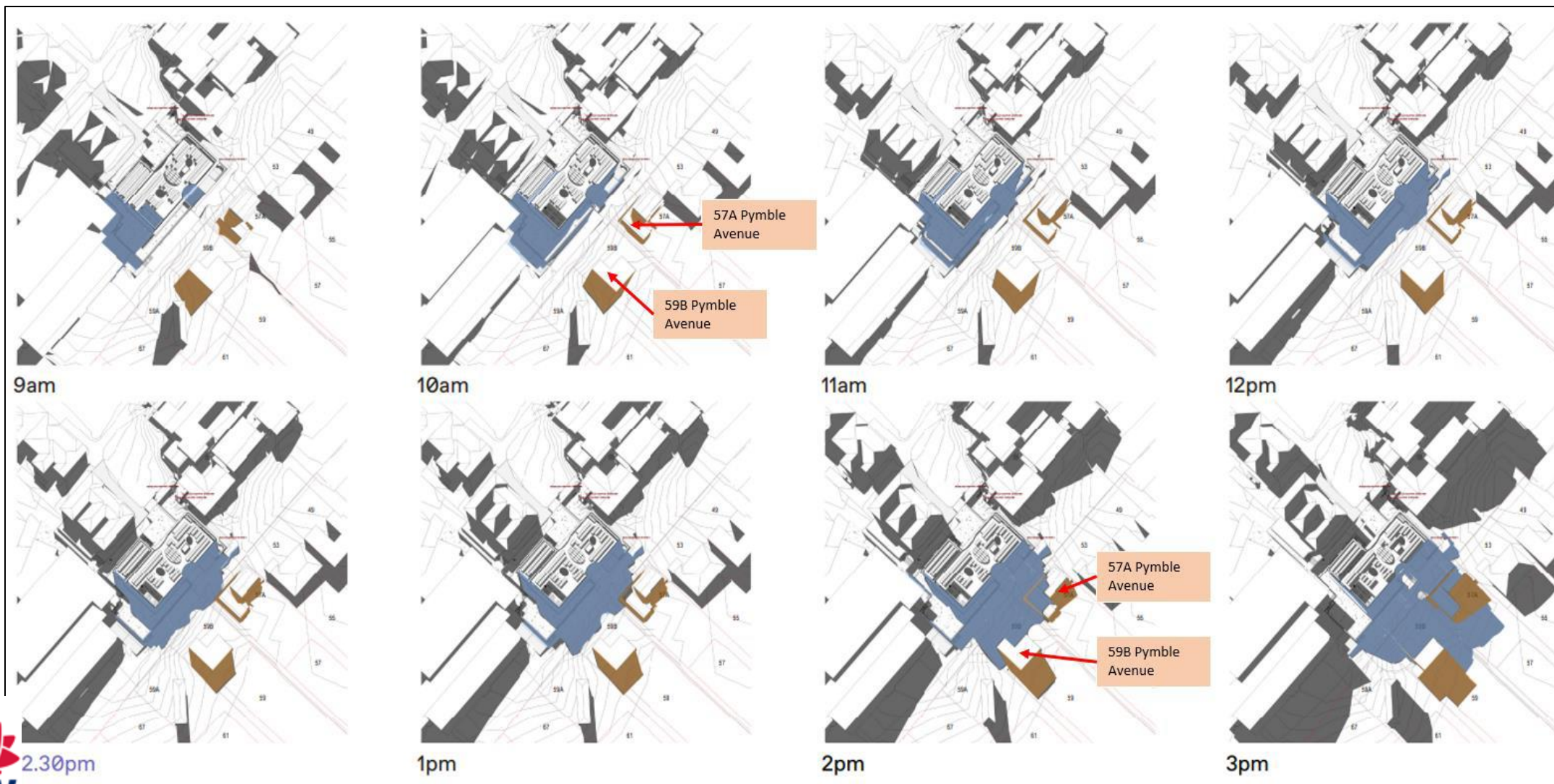








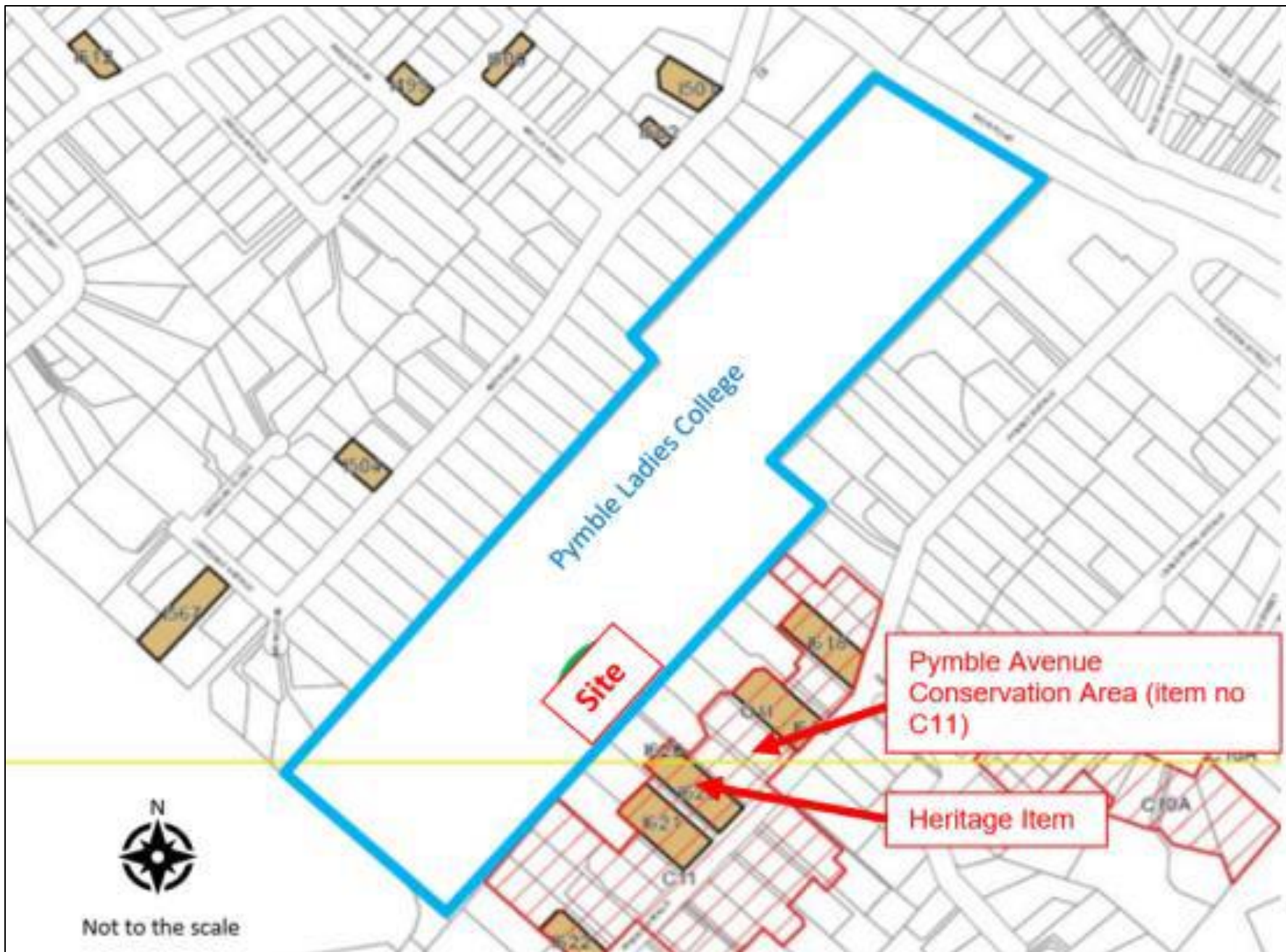
# OVERSHADOWING



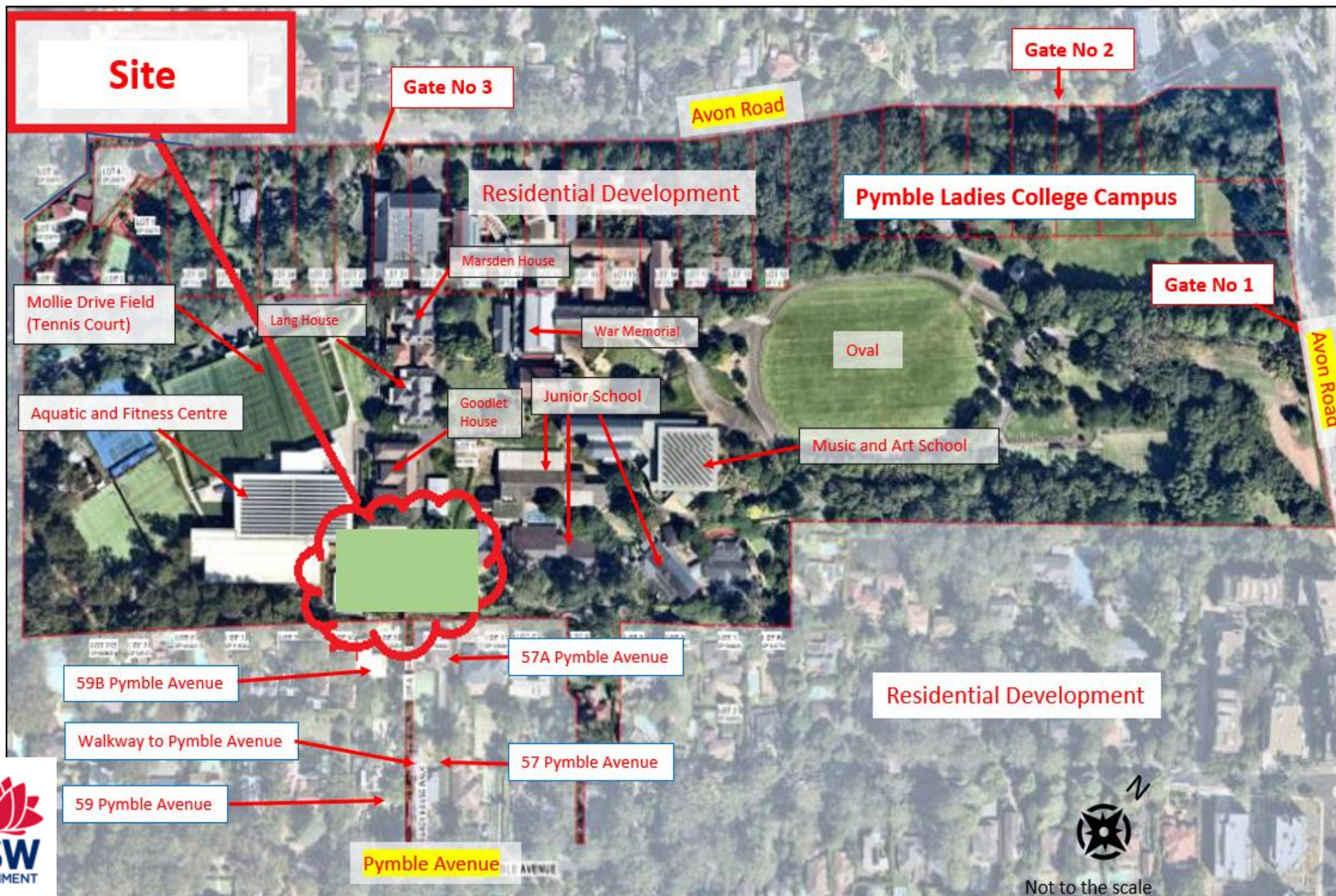
















E W Section







**Pymble Ladies  
College- Grey House  
Precinct**

**SSD-17424905**



**Recommended conditions**