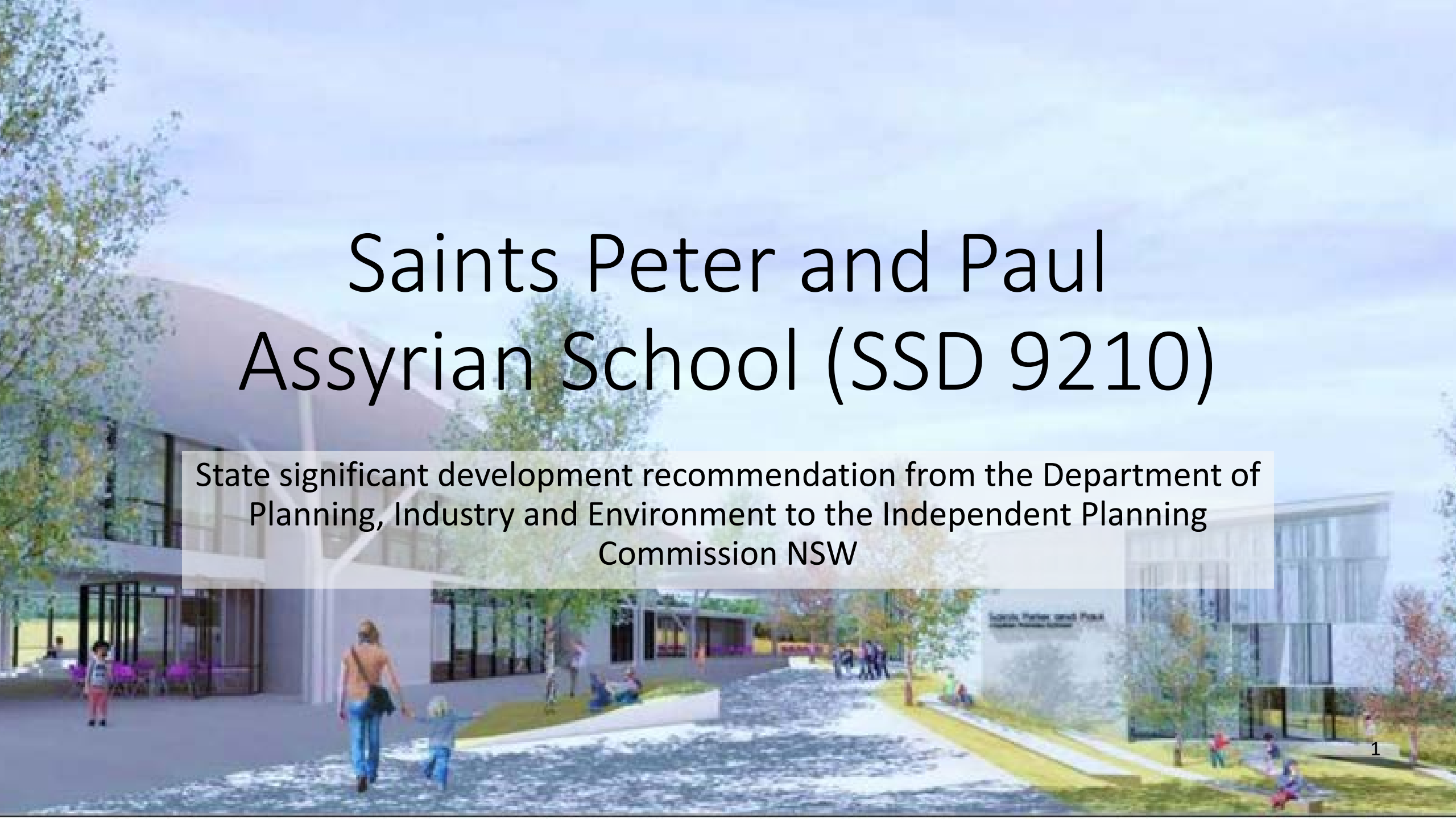
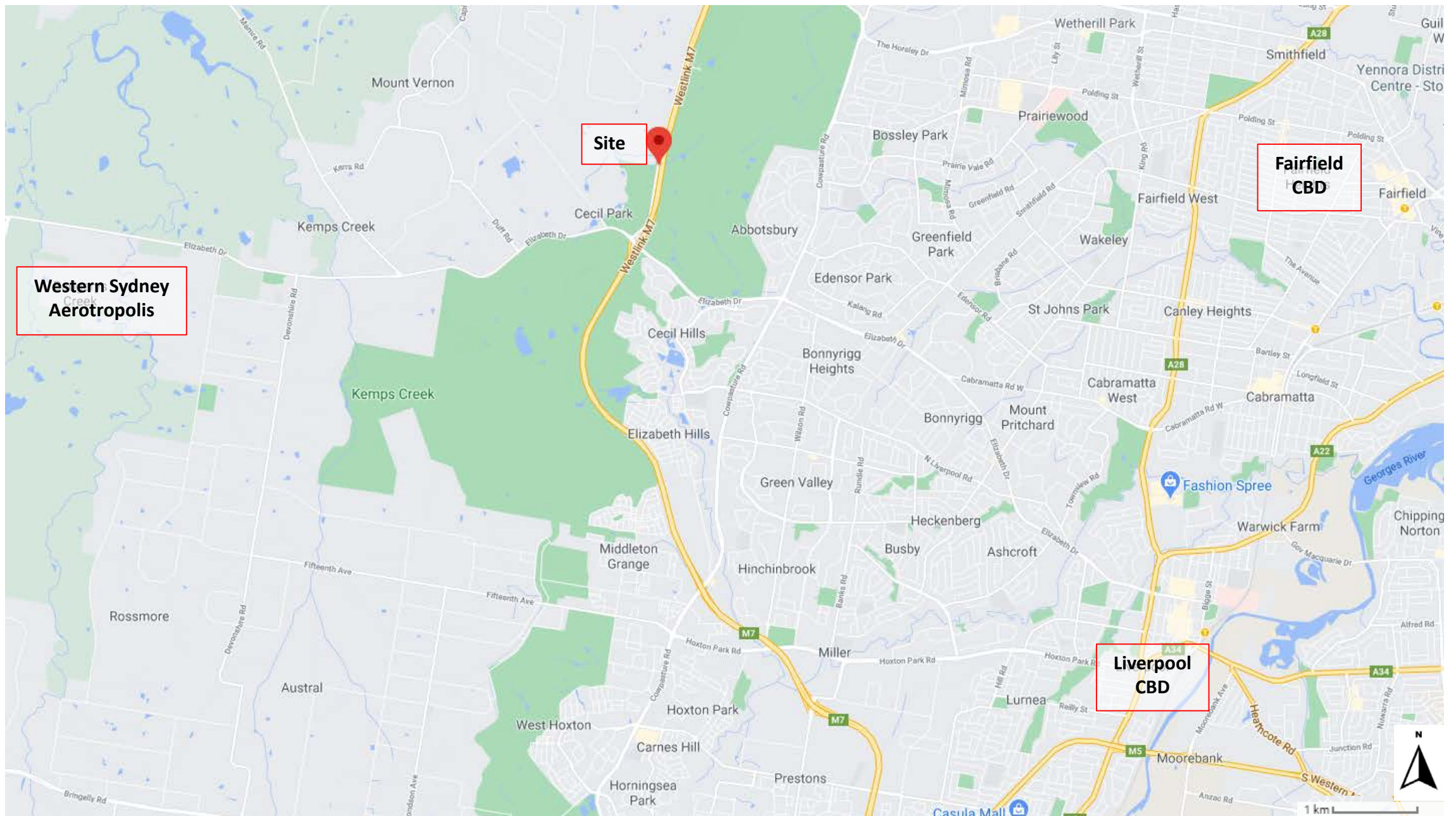


# Saints Peter and Paul Assyrian School (SSD 9210)

State significant development recommendation from the Department of  
Planning, Industry and Environment to the Independent Planning  
Commission NSW





Regional context map

Saints Peter and Paul Assyrian School SSD 9210

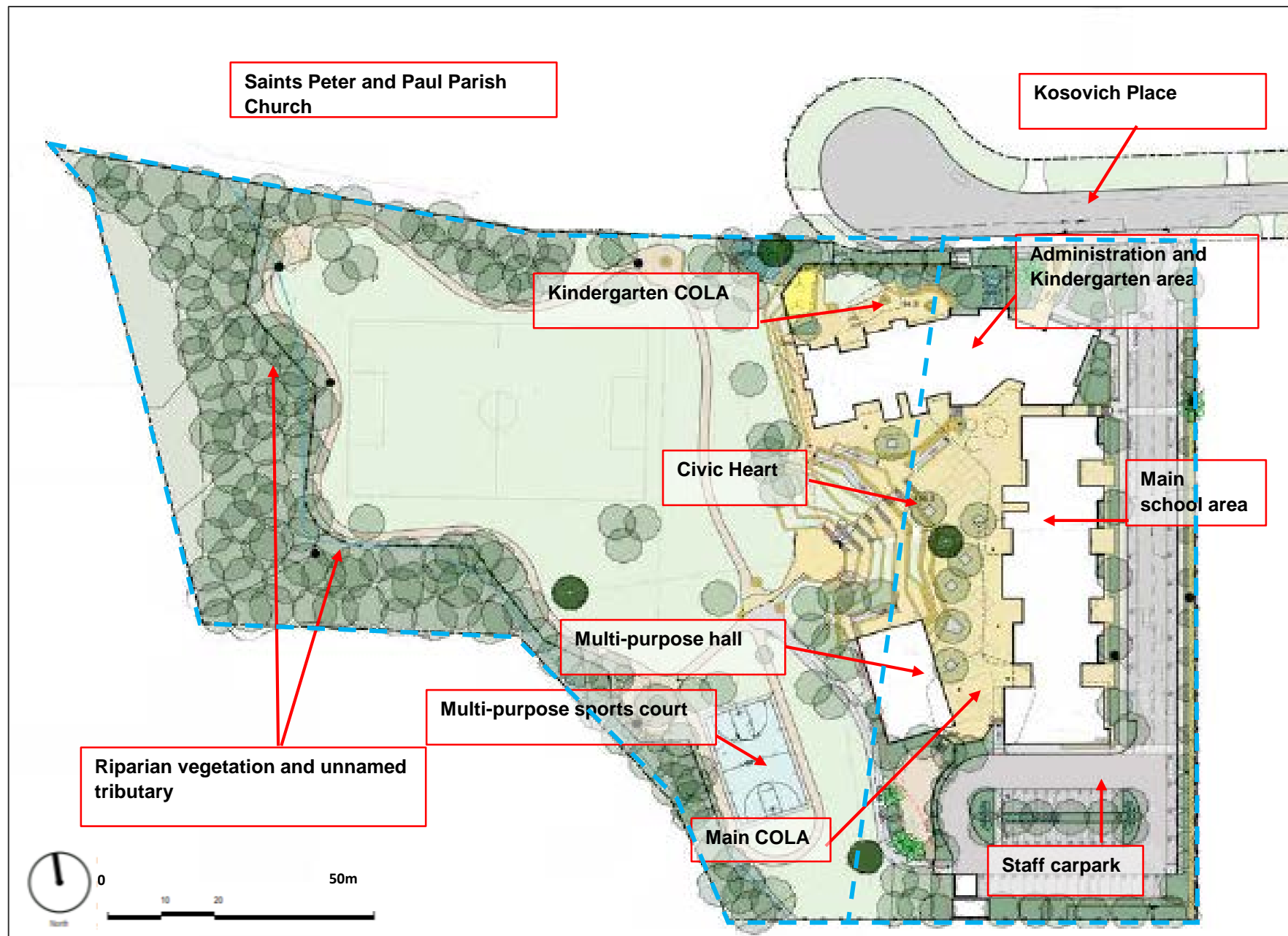




Local context map

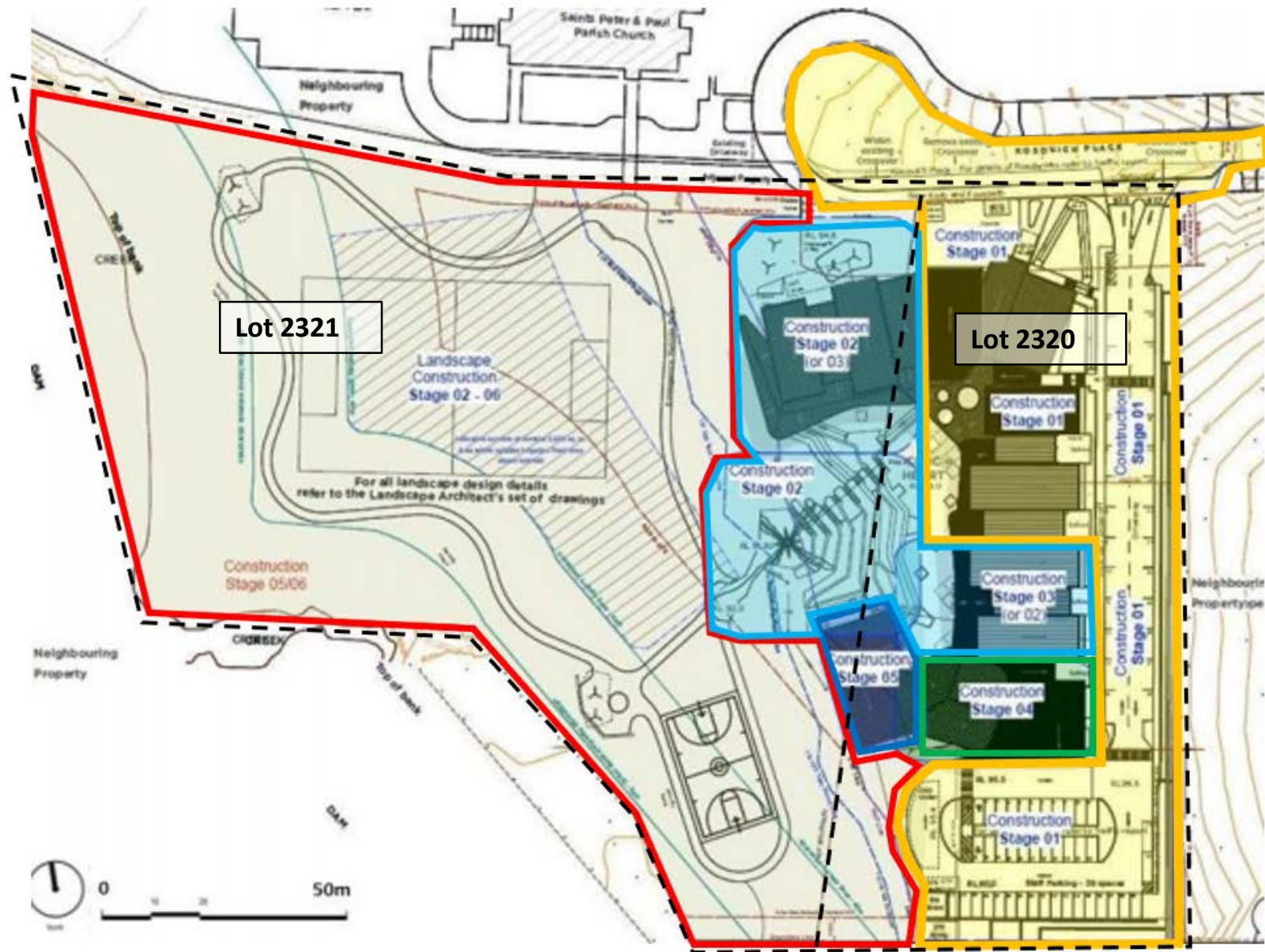
Saints Peter and Paul Assyrian School SSD 9210





## Built form

Saints Peter and Paul Assyrian School SSD 9210



## Construction staging

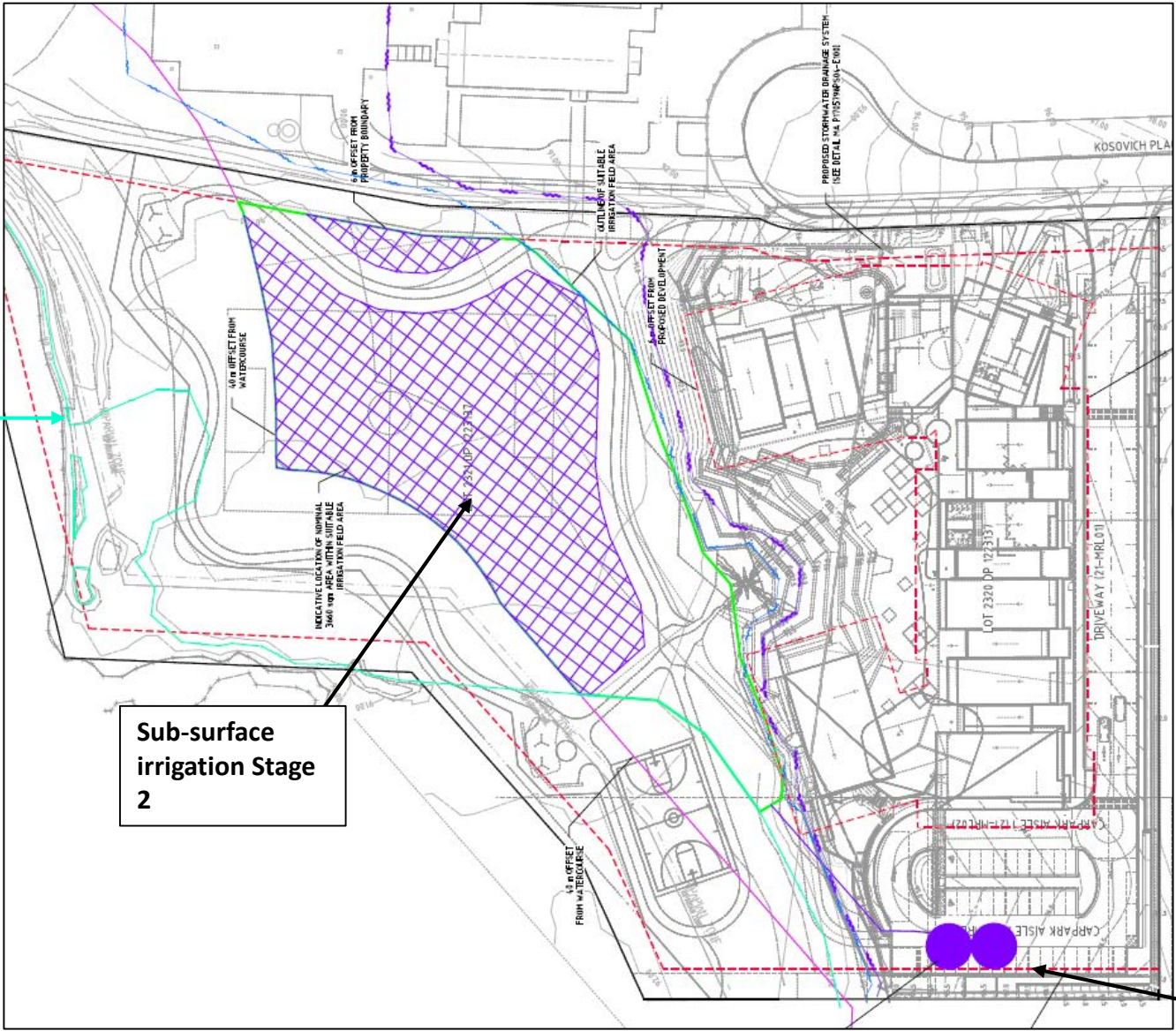
Saints Peter and Paul Assyrian School SSD 9210



Riparian Corridor

Sub-surface  
irrigation Stage  
2

Stage 1 - Pump  
out tank



# Waste water treatment

Saints Peter and Paul Assyrian School SSD 9210



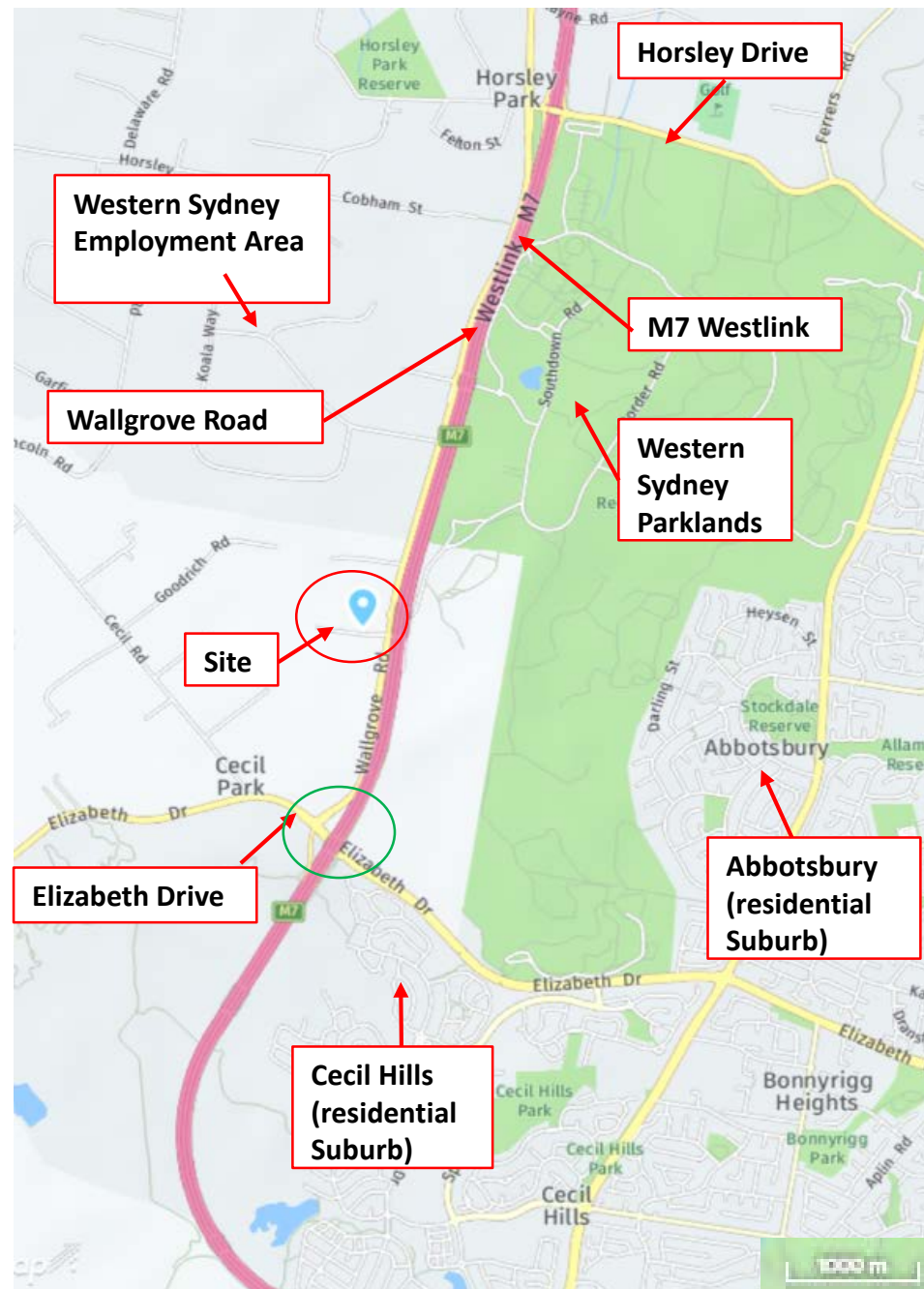


## Site Suitability

Saints Peter and Paul Assyrian School SSD 9210



# Traffic



Saints Peter and Paul Assyrian School SSD 9210





Kosovich / Wallgrove Intersection



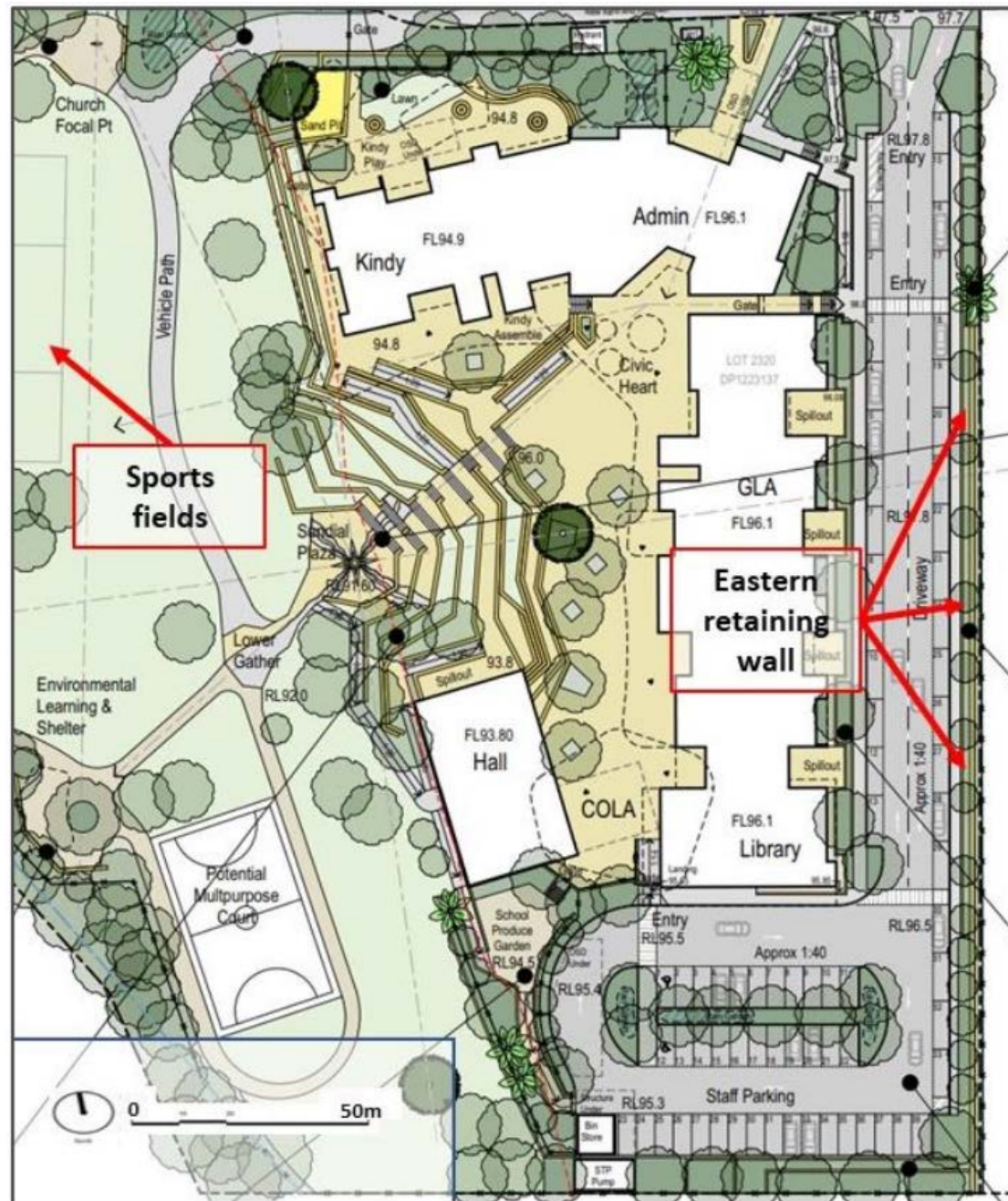


Surrounding environment

Saints Peter and Paul Assyrian School SSD 9210



# Landscape



Saints Peter and Paul Assyrian School SSD 9210

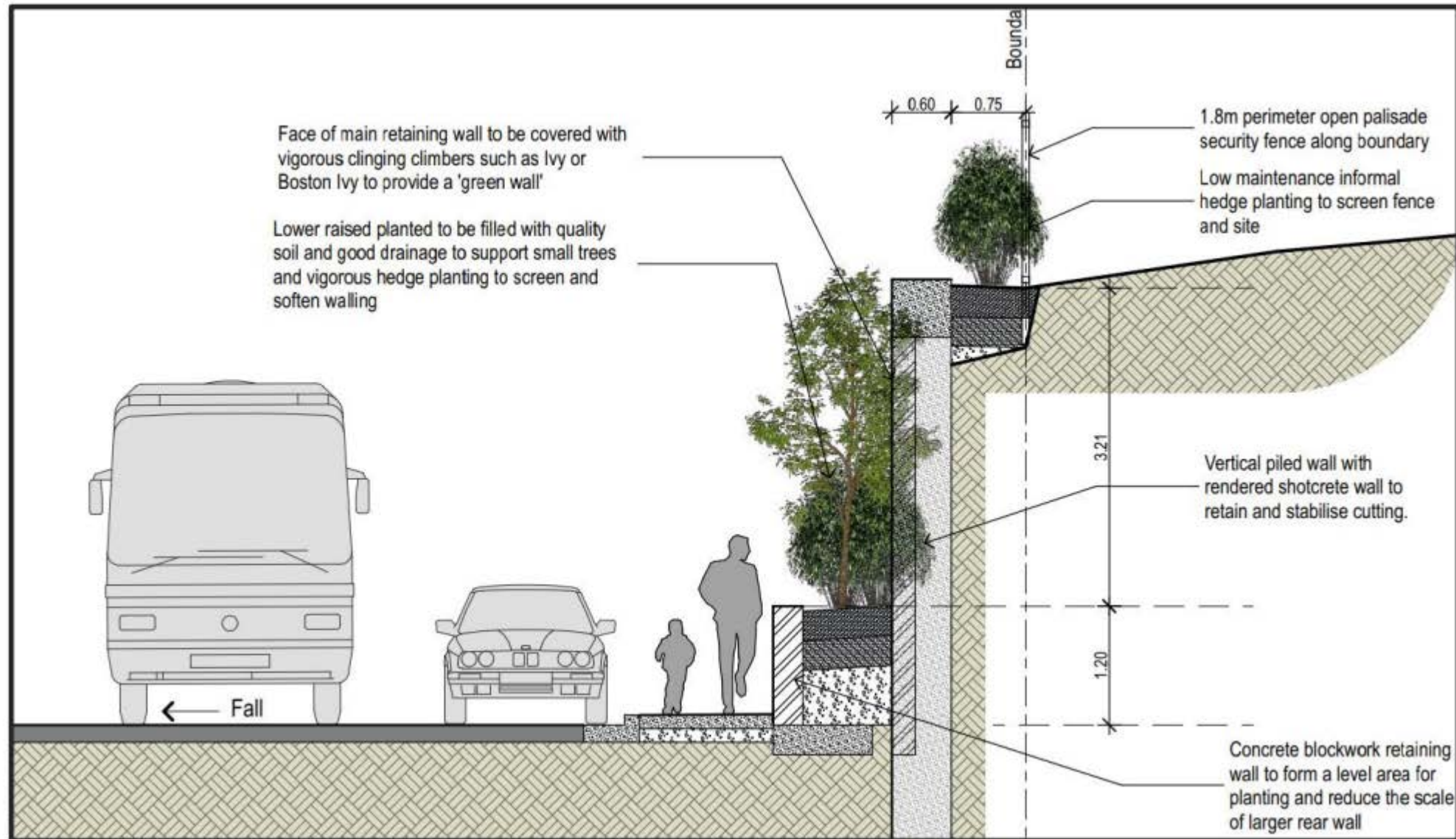




Future landscape setting

Saints Peter and Paul Assyrian School SSD 9210





Eastern boundary section