

Comparison of Predicted Number of Impacted Privately-Owned Bores

Coal Project	Coalfield	Determination Date	Determination ¹	No. Predicted Bores >2m Drawdown	Comments
Dendrobium Extension Project	Southern	5 Feb 21	Refused	0	Up to 5 bores affected in cumulative worst-case scenario, but no significant contribution from project
Maxwell Underground Project	Hunter	22 Dec 20	Approved	1	One bore predicted to be impacted with drawdown up to 2.3m, or 3.7m cumulatively. Two additional bores may be impacted cumulatively up to 3m, though likely to already be dry
Russell Vale Underground Extension Project	Southern	8 Dec 20	Approved	0	
Vickery Extension Project	Gunnedah	12 Aug 20	Approved	0	
Rix's Creek Extension Project	Hunter	12 Dec 19	Approved	0	
Bylong Coal Project	Western	18 Sep 19	Refused	0	
United Wambo Open Cut Project	Hunter	28 Aug 19	Approved	0	
Wallarah 2 Coal Project	Newcastle	16 Jan 18	Approved	0	
Rocky Hill Coal Project	Gloucester	14 Dec 17	Refused	0	
Wilpinjong Extension Project	Western	24 Apr 17	Approved	0	One publicly-owned bore on Wollar Public School predicted to be affected
Drayton Extension Project	Hunter	22 Feb 17	Refused	0	
Tahmoor South Coal Project	Southern	23 Apr 21	Approved	46	Historical database from previous mining indicates that only 20 bores are likely to require make-good



Hydrogeology – Tahmoor

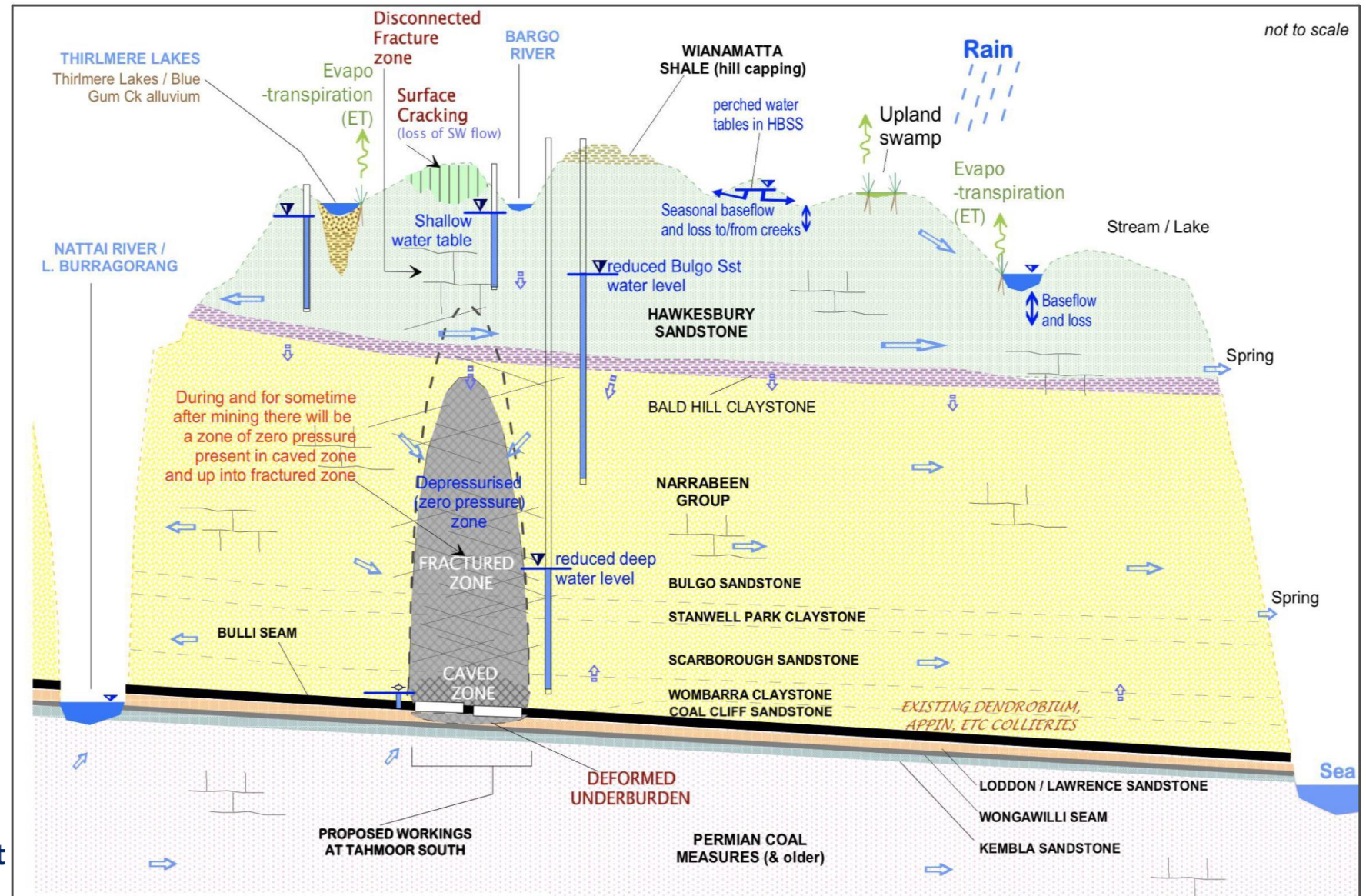


Figure 12 | Hydrogeological Conceptual Model (Post-mining)

Hydrogeology – Hume

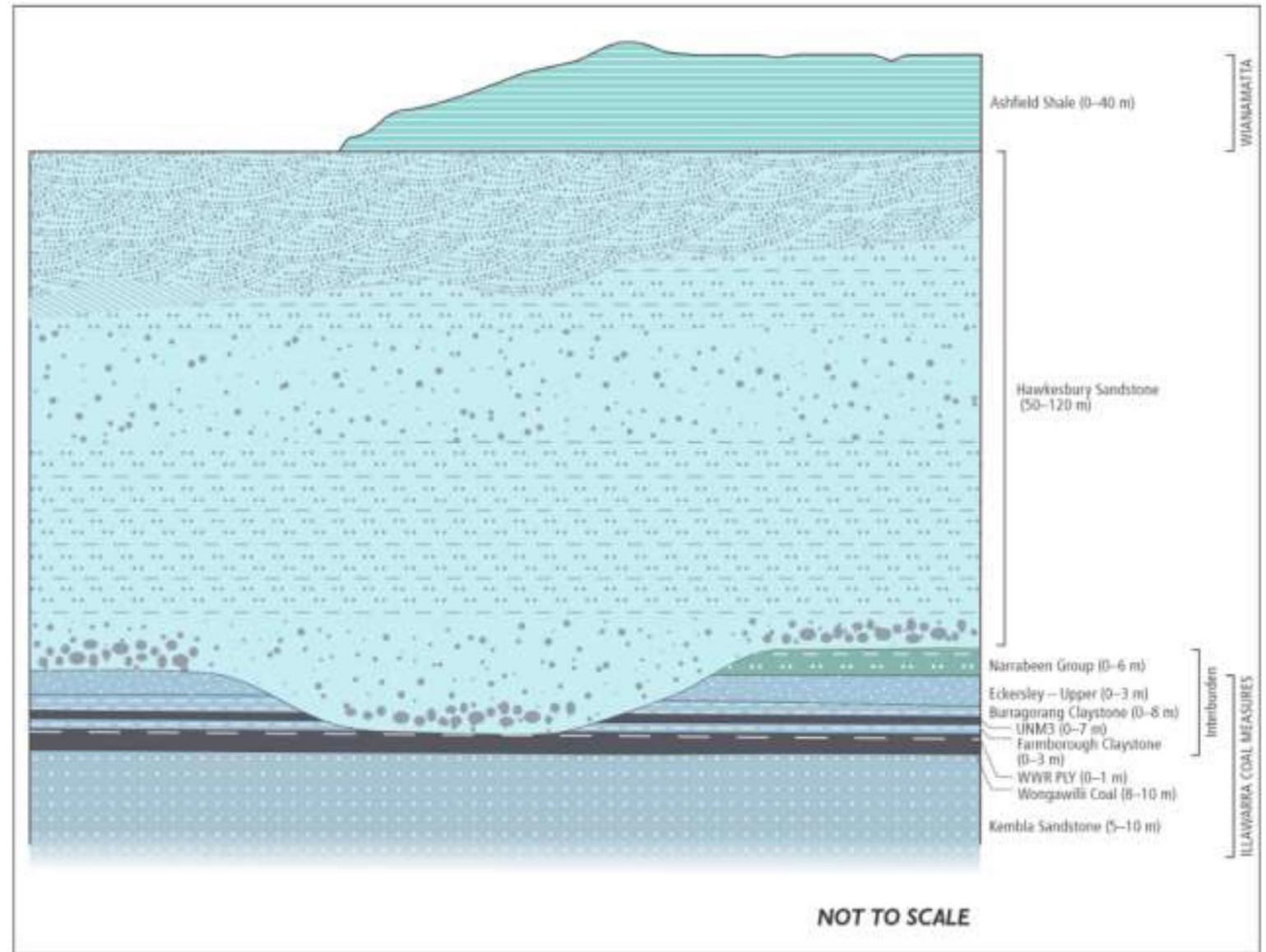
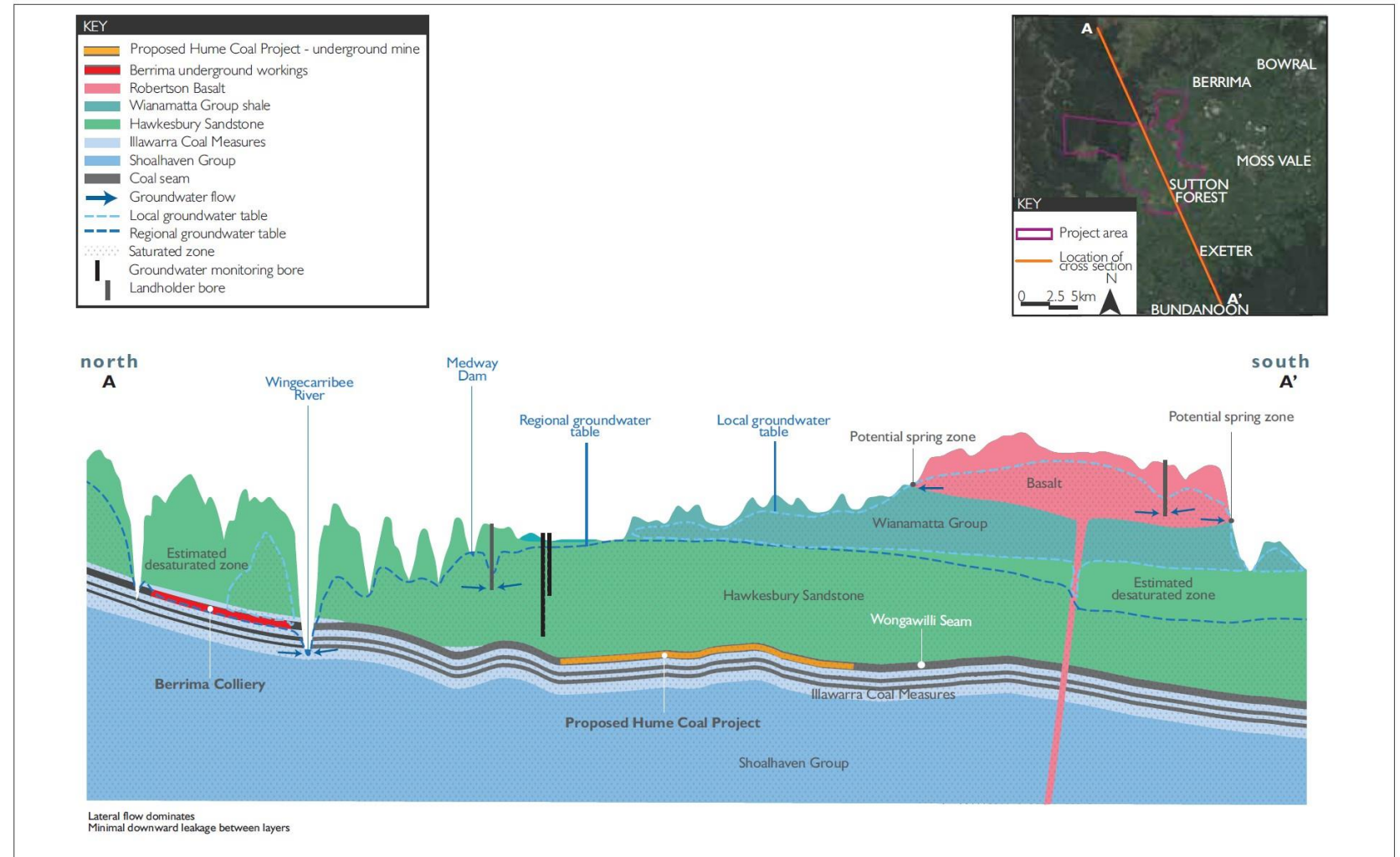


Figure 2.5

Conceptual diagram of the geological units in Hume Coal Project area

Hydrogeology – Hume



Schematic - not to scale
(vertical scale is exaggerated and this is a schematic representation only and does not accurately represent the size or locations of bores)

Interpreted hydrogeological cross-section - existing situation

Hume Coal Project
Water Assessment

Figure 6.11