



Shoalhaven Starches  
Environmental Farm

Bolong

Bomaderry

Waste Water  
Treatment Plant

Shoalhaven Starches Facility



Bolong

Bomaderry

Shoalhaven Starches Facility.

Terara

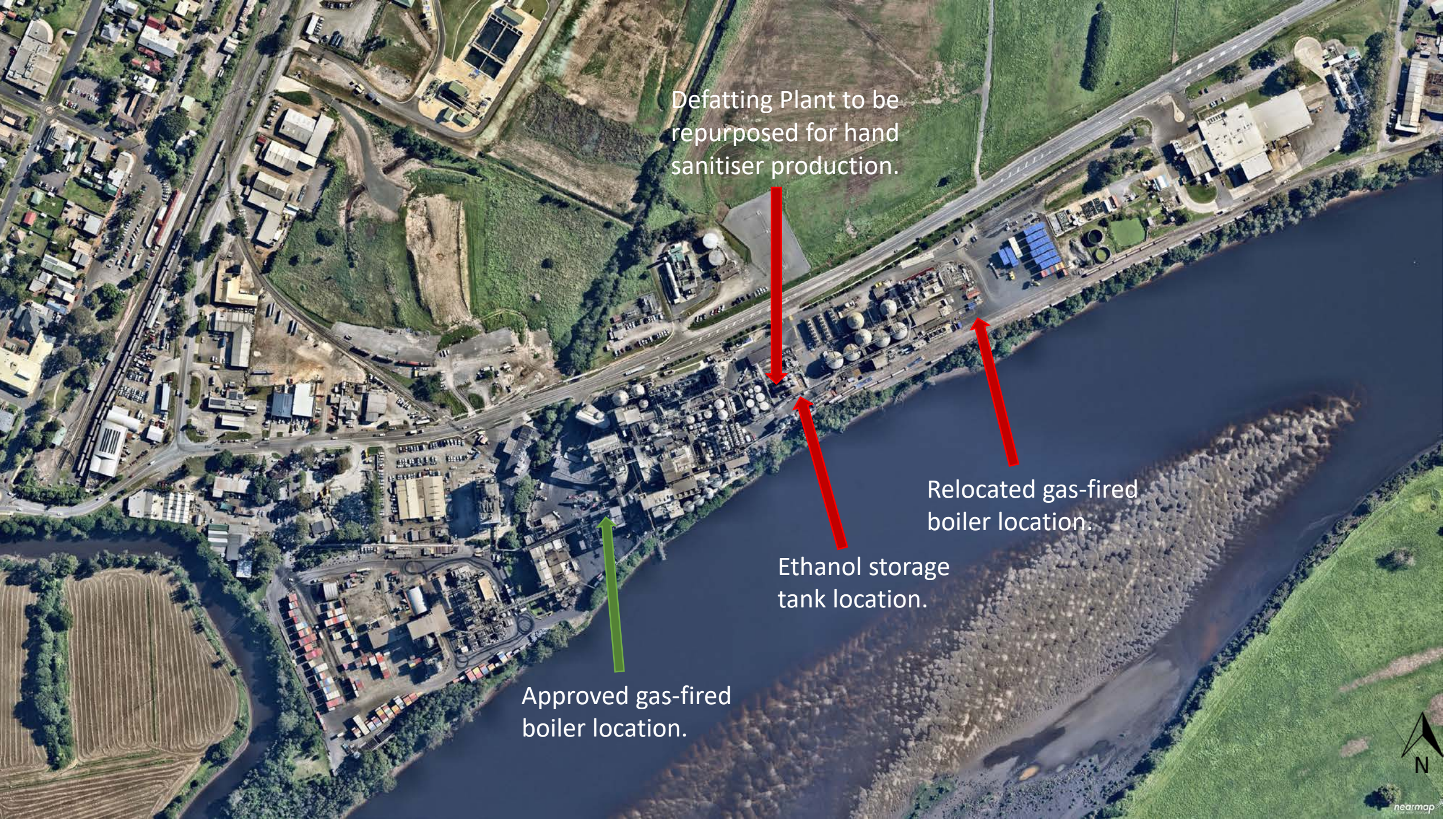
Nowra



# Shoalhaven Starches

- Shoalhaven Starches Facility has been operating on a 12.5 hectare (ha) site since 1979.
- Shoalhaven Starches Environmental Farm expands across approximately 1,000 ha of land north of the facility.
- Shoalhaven Starches Facility currently processes 200,000 tonnes (t) per annum of wheat and sorghum grain and 25,400 t per week of flour to produce:
  - 300 Mega Litres (ML) of ethanol.
  - 105,000 t of dried distillers grain (DDG)
  - Starch, in dried and liquid forms
  - Gluten
  - Glucose syrup
- The existing site plant and equipment at the facility includes:
  - DDG pelletiser plant
  - 2x flour mills
  - Starch plant and grain plant
  - Packing plant
  - Carbon dioxide plant
  - 7x boilers
  - 5x starch dryer
  - 8x product dryers
  - 7x gluten dryers
  - 30x liquid tanks
  - 20x dry tanks
- The facility currently generates approximately 378 heavy vehicle movements and 1450 light vehicle movements per day.





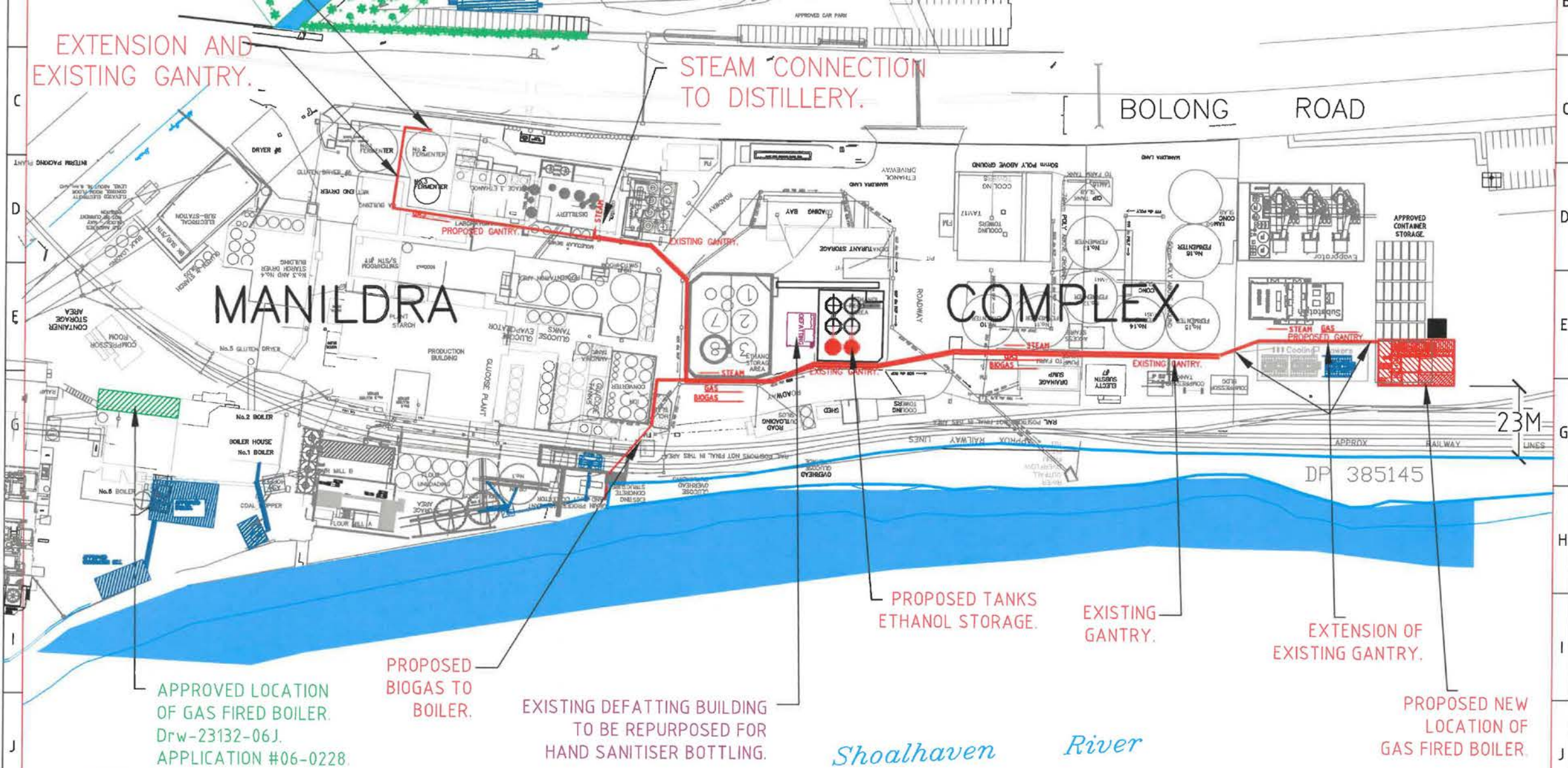
Defatting Plant to be repurposed for hand sanitiser production.

Relocated gas-fired boiler location.

Ethanol storage tank location.

Approved gas-fired boiler location.





REV	ZONE	DETAILS	DRN	DATE	CHKD	APPD
P06	J5	Defatting building wording added.	P.C.	30-06-20	A.T.	B.H.
P05	D6	Storage shed removed.	P.C.	25-06-20	A.T.	B.H.
P04	ALL	Footprint increased to match supplied layout.	P.C.	14-05-20	A.T.	B.H.
P03	ALL	Biogas feed added.	P.C.	06-05-20	A.T.	B.H.
P02	ALL	For application.	P.C.	24-04-20	A.T.	B.H.
P01	ALL	Proposal.	P.C.	23-04-20	A.T.	B.H.



**MANILDRA GROUP**  
100% AUSTRALIAN



DRAWN P.C.	DATE 23/04/20	JOB TITLE SHOALHAVEN STARCHES.BOMADERRY. NSW	SHT SIZE A3
CHKD B.H.	DATE	DWG TITLE PROPOSED GAS FIRED BOILER RELOCATION FOR HAND SANITISER GRADE ETHANOL.SITE PLAN.	REV. P06
APPD	DATE	PROJECT No. 6991	DWG No. MN6991-001
	SCALE 1:1250		





Relocated gas-fired  
boiler location.

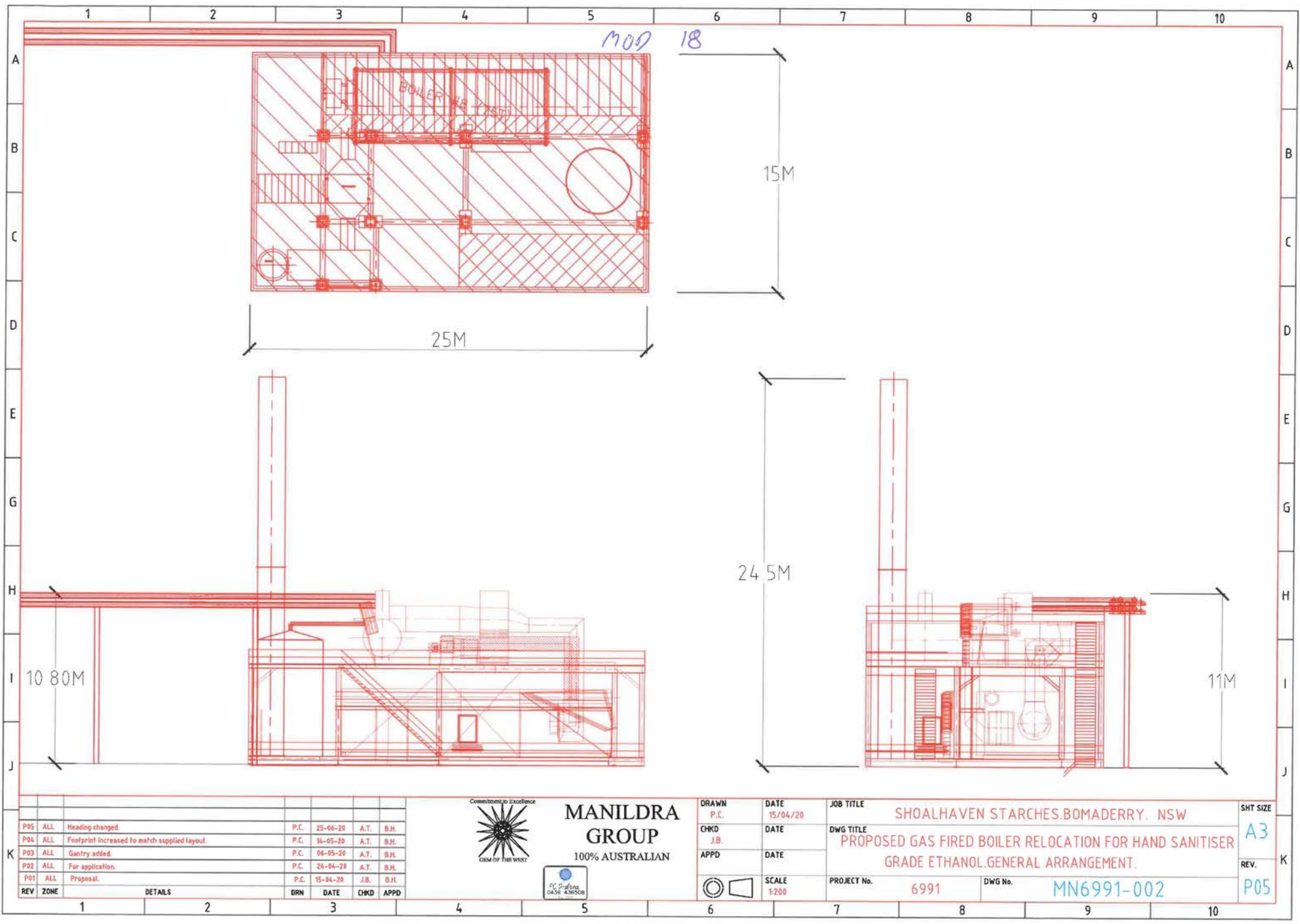
Ethanol storage  
tank location.



Defatting Plant to be repurposed for hand sanitiser production.







REV	ZONE	DETAILS	DRN	DATE	CHKD	APPD
P05	ALL	Heading changed	P.C.	25-06-20	A.T.	B.H.
P04	ALL	Footprint increased to match supplied layout.	P.C.	14-05-20	A.T.	B.H.
P03	ALL	Gantry added.	P.C.	04-05-20	A.T.	B.H.
P02	ALL	For application.	P.C.	24-04-20	A.T.	B.H.
P01	ALL	Proposal.	P.C.	15-04-20	J.B.	B.H.



**MANILDRA GROUP**  
100% AUSTRALIAN



DRAWN	P.C.	DATE	15/04/20
CHKD	J.B.	DATE	
APPD		DATE	
SCALE	1:200		

JOB TITLE	SHOALHAVEN STARCHES.BOMADERRY. NSW	
DWG TITLE	PROPOSED GAS FIRED BOILER RELOCATION FOR HAND SANITISER GRADE ETHANOL.GENERAL ARRANGEMENT.	
PROJECT No.	6991	DWG No.
		MN6991-002

SHT SIZE	A3
REV.	P05



