

# Dunmore Sand & Soil

## Modification 2 - Stage 5

Independent Planning Commission






Applicant Presentation - Planning

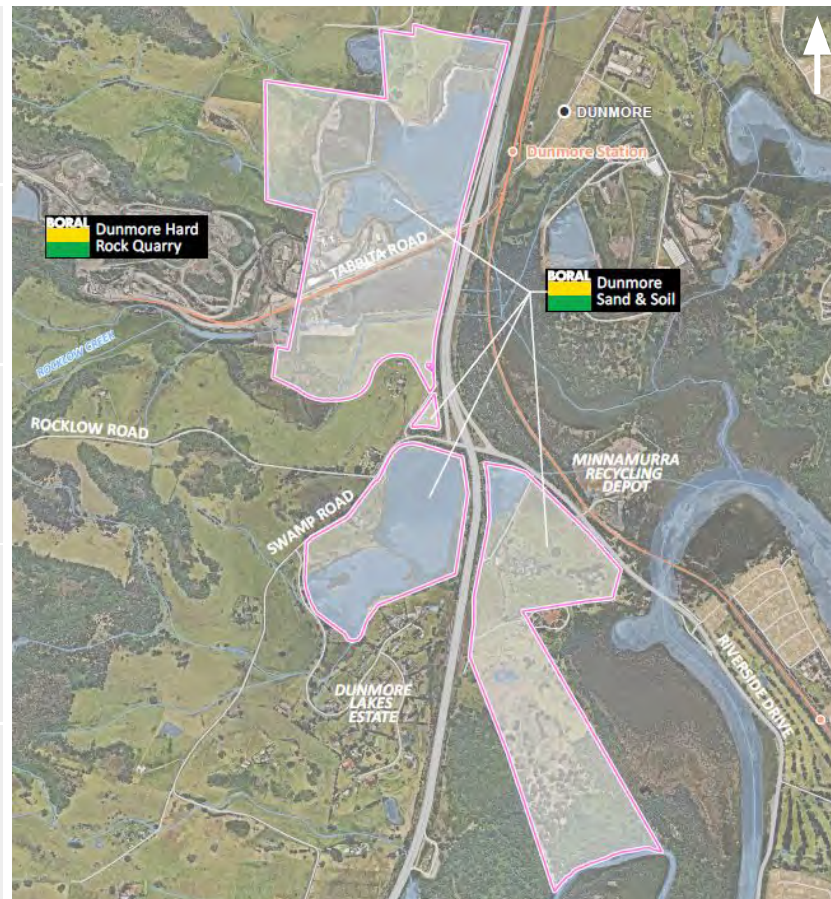
**28 October 2020**



# 01 - Dunmore Sand & Soil

A brief overview of our project

	Hours of Operation	<ul style="list-style-type: none"><li>• <b>NO CHANGE</b></li><li>• Extraction and works remain the same</li></ul>
	Consent Period	<ul style="list-style-type: none"><li>• <b>NO CHANGE</b></li><li>• Our consent is valid for 25 years</li></ul>
	Production and Transport Limit	<ul style="list-style-type: none"><li>• <b>NO CHANGE</b></li><li>• 800,000 tonnes per annum unchanged</li></ul>
	Distribution Method	<ul style="list-style-type: none"><li>• <b>NO CHANGE</b></li><li>• Road and rail distribution remains the same</li></ul>
	Extraction Method	<ul style="list-style-type: none"><li>• <b>NO CHANGE</b></li><li>• Use of the same excavators and dredge</li></ul>



## Key Facts

- Stage 5 will allow existing facilities at the Dunmore Sand & Soil Tabbitta Road site to continue operating
- Existing infrastructure at Tabbitta Road will be used, removing the need for additional disturbance within the Stage 5 areas.
- High level of environmental management will continue at Tabbitta Road.

Existing Area

**63 ha**

Currently approved  
disturbance and extraction  
footprint

Increase of Dredge Area

**18%**

Area increase when  
considering current dredging  
operation extents

Resource Realised

**1.3m**

tonnes released to the  
building and development  
industry



## 02 - The Constraints

Factors which guided our framing of the project









# 03 - Planning Considerations

Vegetation & Mitigation





## Management Plans

## Inspections

## Weed Management

## Offset Credits

## Nest Boxes

## Rehabilitation

### Collectively developed

### Pre-clearing inspections

### Ongoing management

### Purchasing and securing offsets

### Offsetting impacts

### Effectively implemented

Prepared in consultation with DPIE, OEH, Council and local groups

We will be conducting pre-clearing surveys to ensure hollow bearing trees can be removed

We currently have a weed management protocol which will be updated to capture Stage 5

We will be purchasing offset credits in accordance with the requirements of the Biodiversity Conservation Fund

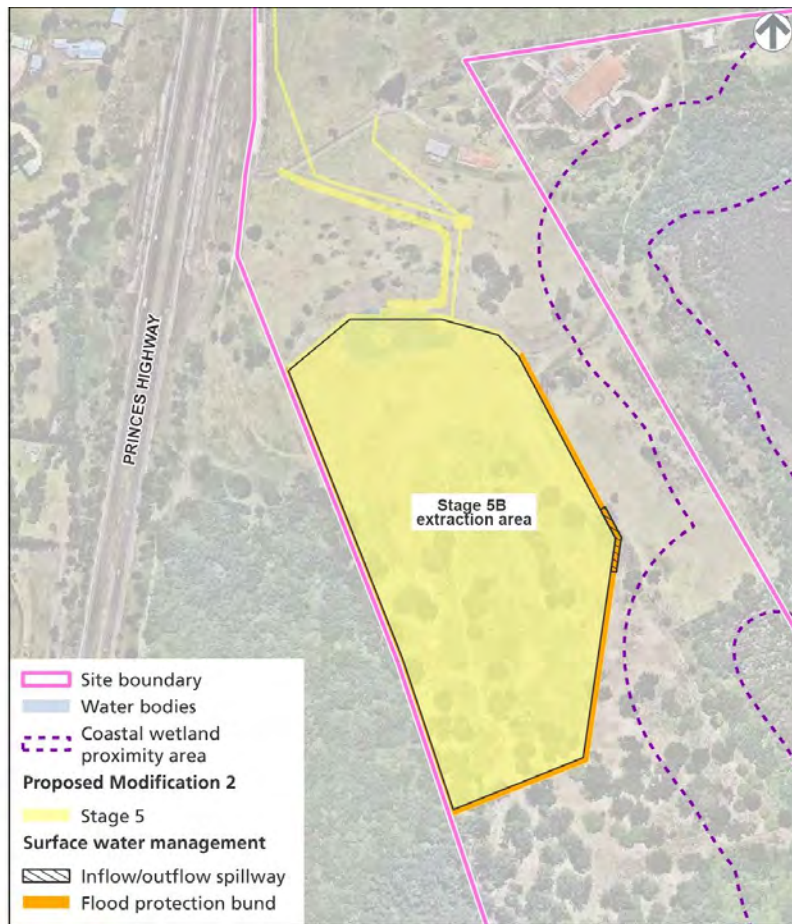
Hollow bearing trees will be surveyed and cross checked to ensure we provide adequate nest boxes south of Stage 5B

We have a track record of providing great outcomes in the Dunmore area



# 04 - Planning Considerations

Flooding





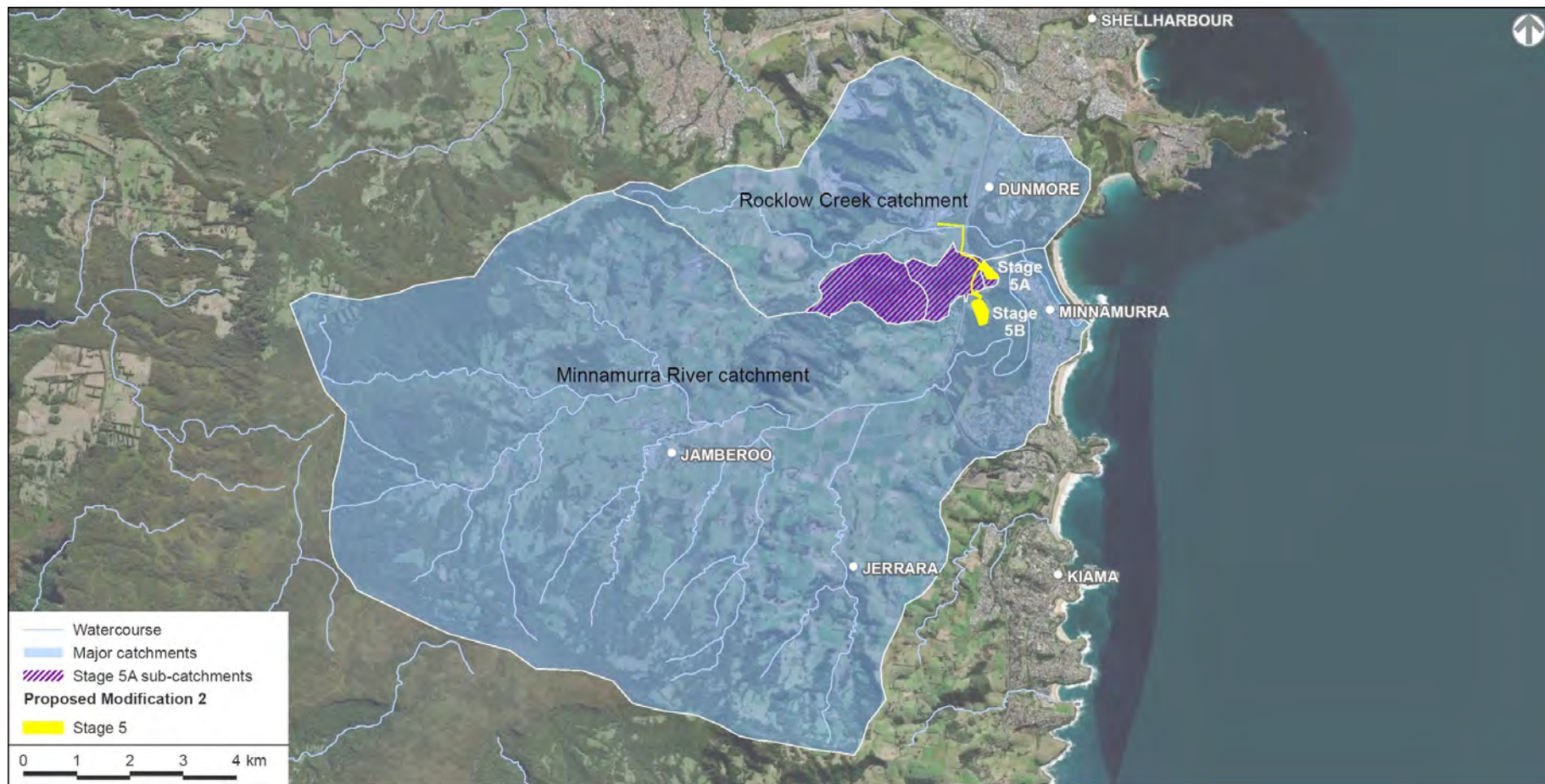


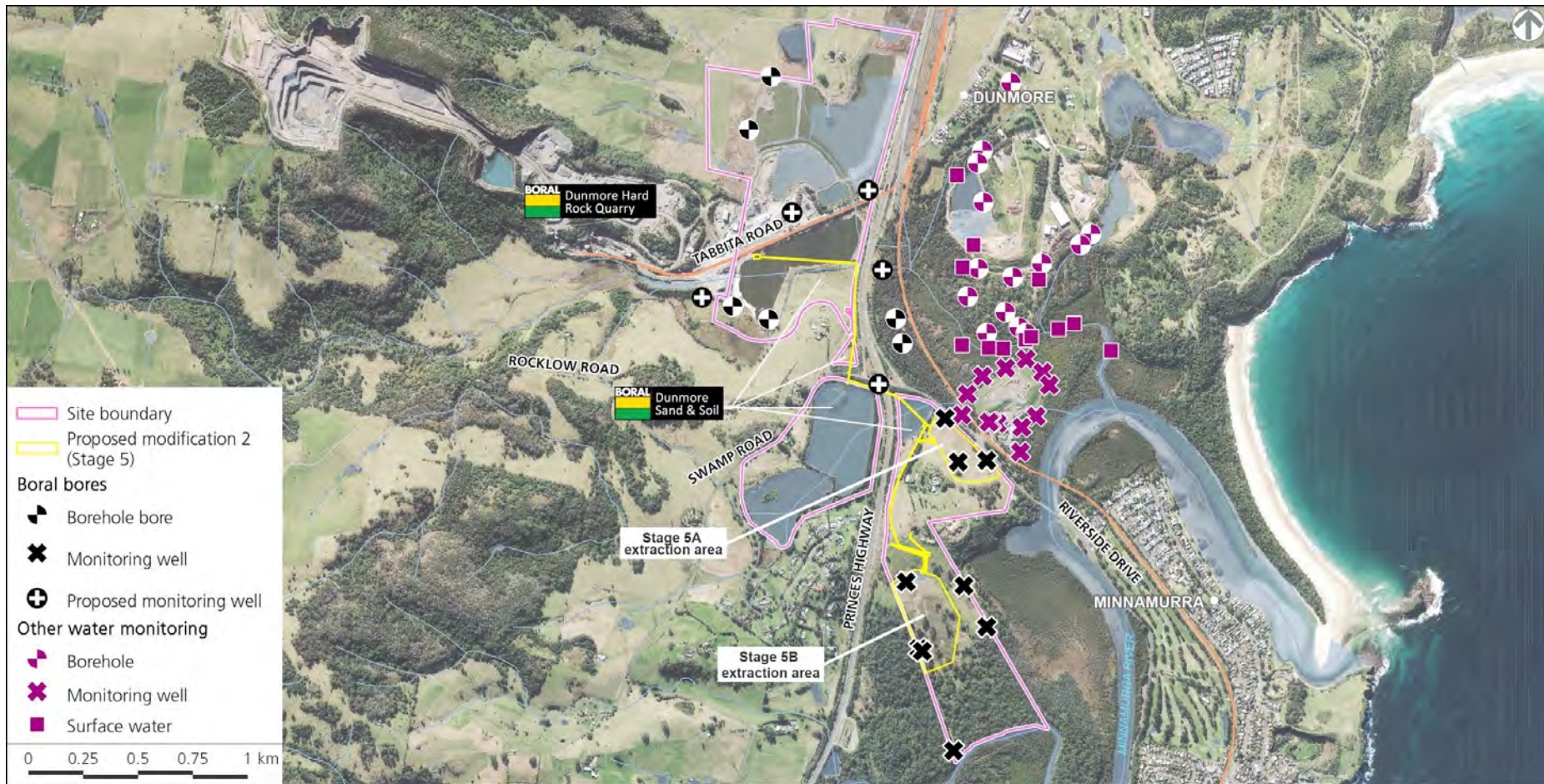




# 05 - Planning Considerations

Groundwater







# **06 - Planning Considerations**

Cultural Heritage

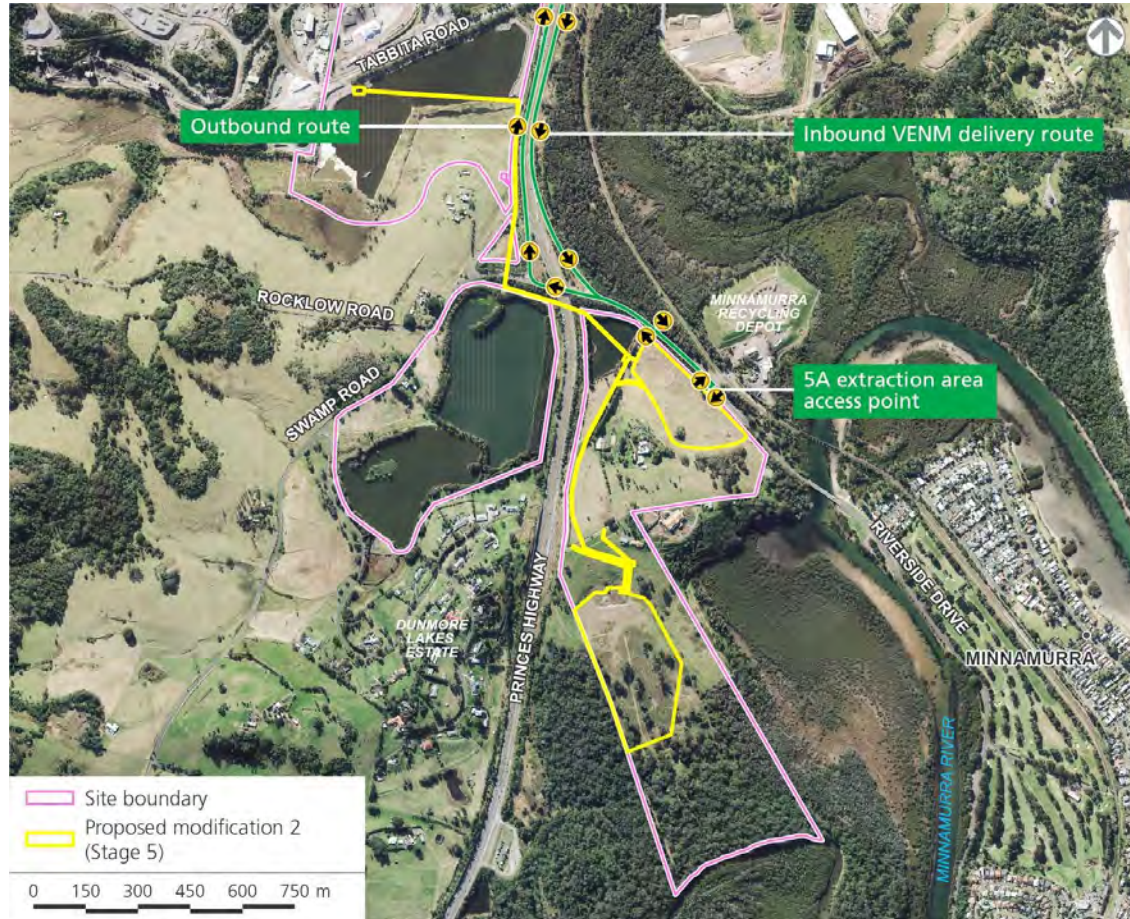






# 07 - Planning Considerations

Traffic & Transport



### Key Facts

- Stage 5A will be the first area for extraction and rehabilitation activities.
- The land will be returned to its present state, with vegetation to be established for grazing purposes
- Traffic impacts during rehabilitation activities only
- We expect to be completed with our operations at this stage in 3 years.

Hourly Movements

**3 / 5**

Average and Peak movements  
to Stage 5A

Trucks Per Day

**23 / 45**

Average and Peak movement  
to Stage 5A

Haulage Period

**48**

Weeks required to complete  
fill at Stage 5A







## 08 - Other Considerations

Issues raised by the community

### White Bellied Sea Eagle

- **NO IMPACT**
- The nest is 280m+ away from Stage 5B

### Plume from Council Facility

- **NO IMPACT**
- Our proposal will not impact Council's toxic plume

### No extraction from Minnamurra River

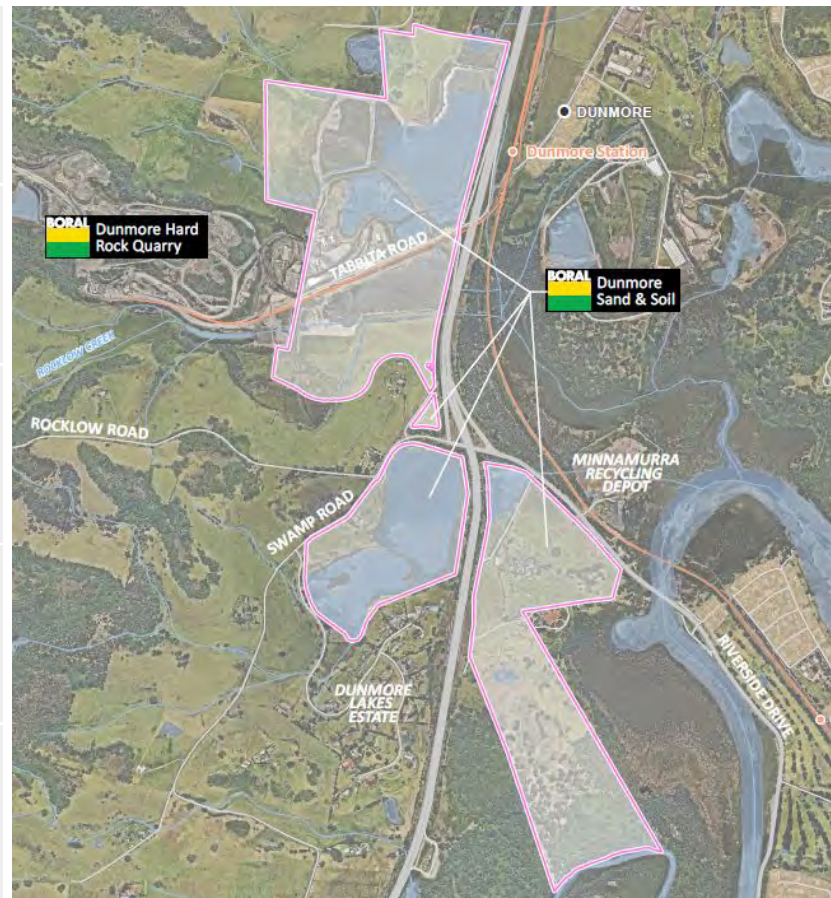
- **NO EXTRACTION**
- No impacts on the river or its associated ecosystems

### No Impacts to Tourism

- **NO CHANGE**
- Our project is completely isolated from the River

### Record of good rehabilitation

- **COMMITTED TO GREAT OUTCOMES**



Thank you.



# Dunmore Sand & Soil

## Modification 2 - Stage 5

Independent Planning Commission

Applicant Presentation - Business

**28 October 2020**



# 01 - The Resource

How this sand resource could be utilised

## Key Facts

The size of the sand deposit in this area is significant and extends all the way to the banks of the Minnamurra River

The fine sand we're seeking to extract is a small but essential ingredient in the manufacture of concrete and asphalt

Our stage 5 activities are focused on containing our operations to already disturbed agricultural land

Resource in Stage 5

# 1.3m

Million tonnes of sand to be  
extracted in both stages

Concrete Home Slabs

# 200k

Homes which could be  
constructed from this  
resource

Asphalt roads

# 20k km

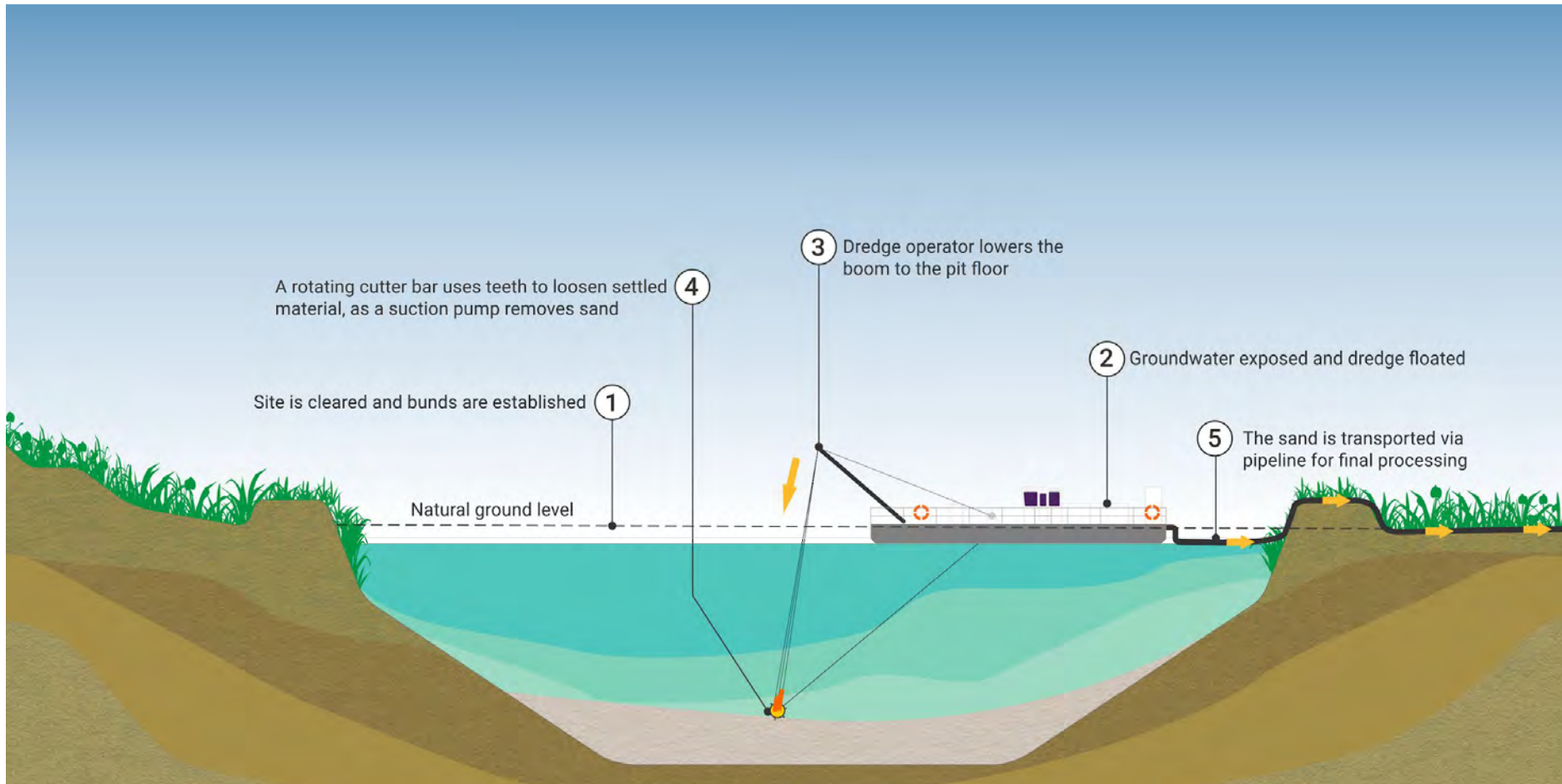
Kilometres of two laned road  
could be made from this  
resource





## 02 - Dredging Process

A brief explanation of our processes





### Extraction

#### Sand Water Mix Arrives

The resource is pumped to the site, where it arrives as a mixture for processing

### Wash

#### The Mix is cleaned

The screen and tub allows for oversized material to be separated, and utilised for rehabilitation purposes

### Recirculation

#### Water returns to ponds

Water that is separated from the sand is pumped into the fines pond, for recirculation

### Cyclone

#### Water goes back to ponds

The remaining mixture is fed into the cyclone, and separated into overflow and underflow (sand for the market)

### Drying

#### Dried overnight for sale

The sand which is to go to market, is allowed to dry overnight to remove moisture, with water going into the fines pond

### Distribution

#### Road and Rail

Once dried, sand is distributed by road/rail (Dunmore is the only rail quarry in the region). Remaining water goes to the extraction pond.



# 03 - Environmental Management

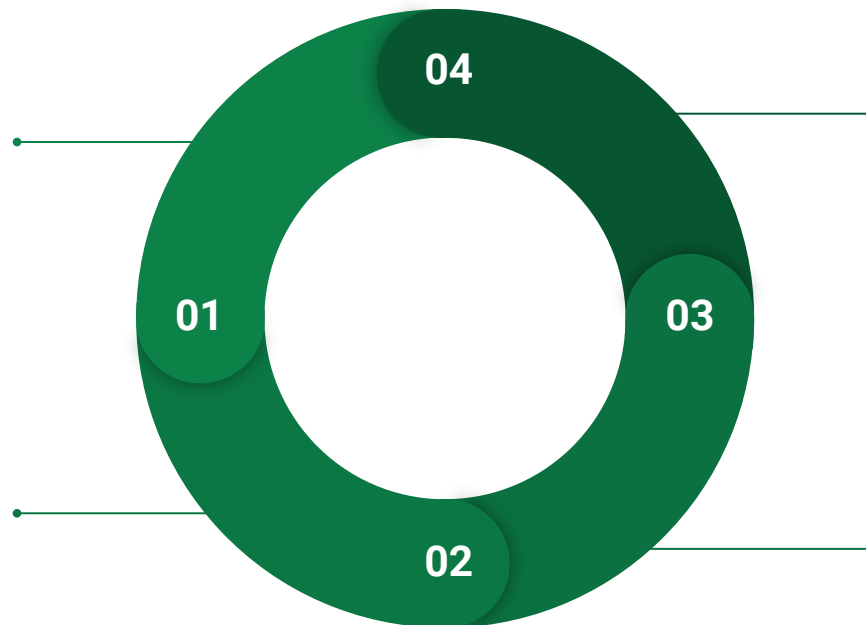
How we ensure minimal impacts to the environment

### Rehabilitation and Fauna

Plans that guide how we manage our riparian zones, landforms, water channels, compensatory habitats and pests & weeds.

### Air Quality and Noise

Plans that guide how we manage and monitor our impact to air quality through both particulate matter and deposited dust measurement, along with noise monitoring.



### Water

Guides how we manage and monitor both groundwater and surface water to ensure we are not impacting these along with erosion & sediment controls and acid sulfate soil management.

### Cultural Heritage

A plan that will guide us as to how we properly engage with indigenous stakeholders and describe protocols for matters such as unexpected finds.

# AUDIT MONITOR REPORT

Annual audits of all management plans to ensure best practice

Regular and real time monitoring of environmental parameters

Transparent and accessible reporting to everyone



# 04 - Consultation

How we communicate with the community

### **Community Consultation Committee**

Regular meetings to discuss site operations and upcoming projects and any concerns

### **Public Meetings**

We've held numerous project specific briefings and Q&A sessions



### **Website - Documentation**

Our website gives access to all management and approval documentation

### **Feedback and Complaint Tracking**

We always promptly follow up contact from our community received via various methods

**Dunmore Sand and Soil is committed to continuing to be a responsible operator and an integral part of the community in which we operate**



Shellharbour Council Staff



Kiama Council Staff



DPIE and IPC Site Tours



Community Groups



#### Dunmore Sand & Soil Modification Referred To IPC

Boral acknowledges today's decision by the NSW Department of Planning, Industry and Environment (DPIE) to refer the proposed modification of the Dunmore Sand and Soil (DSS) consent to the NSW Independent Planning Commission (IPC).

Boral remains confident the application for the proposed modification, which is underpinned by scientific data and the input of independent experts, will stand up to the rigorous and thorough assessment of DPIE and the IPC.

Boral's current sand operations at Dunmore have been successfully and responsibly managed for 20 years in the Minnamura River catchment. Boral has demonstrated over many years that it can manufacture construction materials locally and ensure jobs are maintained in the local community.

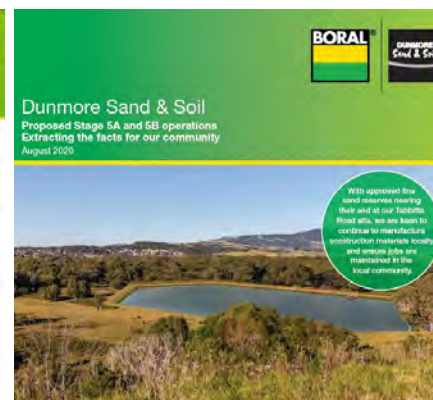
The proposed modification has been configured for largely cleared pastoral land to minimise any effect on nearby food communities.

The proposal does not involve sand extraction in or proximate to the Minnamura River. Rather, the proposed configuration will be more than 300 metres from the river and will not be connected to the river system in any way.

Boral respects the input of all key stakeholders on this proposal to date. All issues raised at various meetings with the community and their representatives have been taken seriously and addressed in the environmental and other studies completed for this proposal.

We are aware there have been a number of claims regarding the project that are incorrect. Boral remains committed to continuing to work with the community to provide clarity and avoid misinformation.

We look forward to working constructively with our local stakeholders and the IPC towards the





## 05 - Rehabilitation

Outcomes we've delivered over the years







# 06 - Questions

Thank you.

