



New England Solar

Independent Planning Commission Briefing

Department of Planning, Industry & Environment
24 January 2019



Contents

- 1. Strategic context*
- 2. Regional context*
- 3. Local context*
- 4. Key issues*

New England Region

Legend

Wind and Solar PV Projects

- Operational and/or Under Construction
- Approved
- Seeking Planning Approval

Other

- Transmission System
- Proposed 330kV Circuits
- NSW Priority Zones
- NSW Boundary
- Local Government Area
- Land Capability (Classes 1, 2, 3)
- Biophysical Strategic Agricultural Land (BSAL)

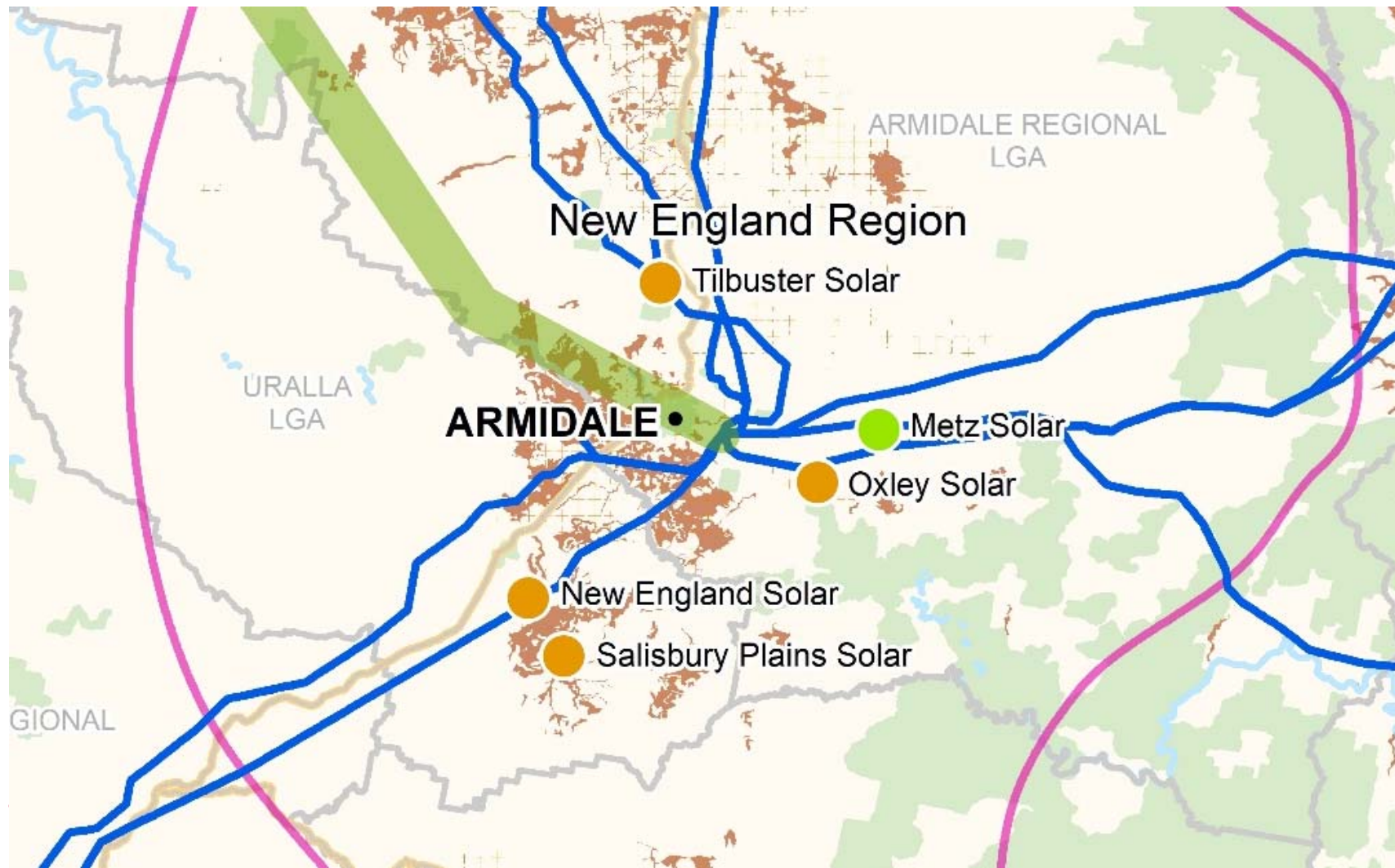
Map Labels: MOREE, NARRABRI, TAMWORTH, ARMIDALE, COFFS HARBOUR, PORT MACQUARIE, WEE WEA SOLAR, SILVERLEAF SOLAR, NARRABRI SOUTH SOLAR, GUNNEDAH SOLAR, ORANGE GROVE SOLAR, TAMWORTH SOLAR, BONSHAW SOLAR, SAPPHIRE WIND, SAPPHIRE SOLAR, SUNDOWN SOLAR, WHITE ROCK 1 WIND, WHITE ROCK 2 WIND, WHITE ROCK SOLAR, METZ SOLAR, OXLEY SOLAR, NEW ENGLAND SOLAR, SALISBURY PLAINS SOLAR, TIBUSTER SOLAR, GLEN INNES WIND, CLARENCE VALLEY LGA, RICHMOND VALLEY LGA, BELONGEN LGA, NAMBUCCA LGA, KEMPSLEY LGA, PORT MACQUARIE HASTINGS LGA, MID COAST LGA, UPPER MANNER LGA, TAMWORTH REGIONAL LGA, ARMIDALE REGIONAL LGA, GUYRA LGA, INVERELL LGA, GUYDIR LGA, NARRABRI LGA, WARRUMBONG LGA, COFFS HARBOUR LGA.

Inset Map: NEW SOUTH WALES

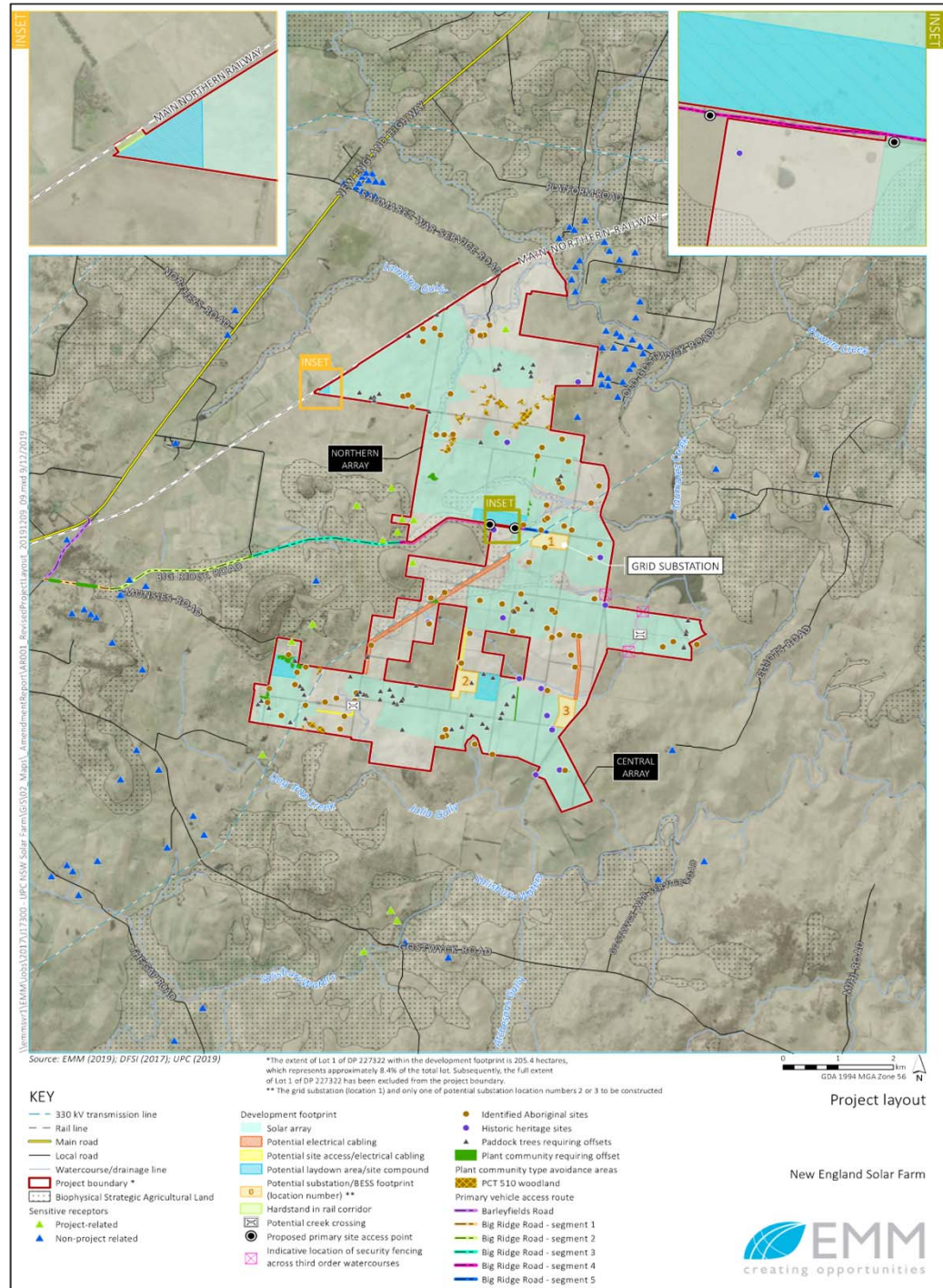
Scale: 1:1,250,000

NSW Planning & Environment

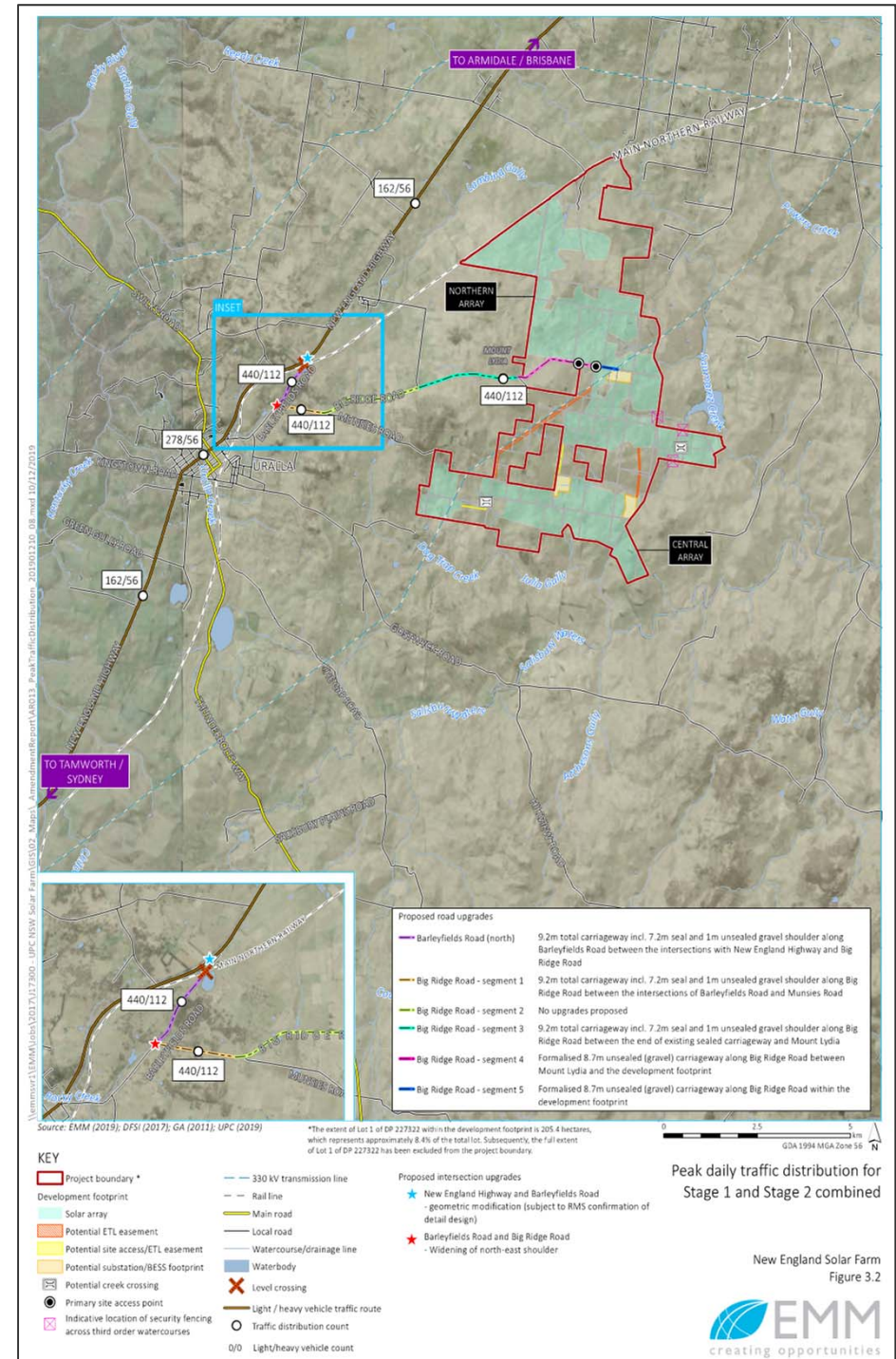
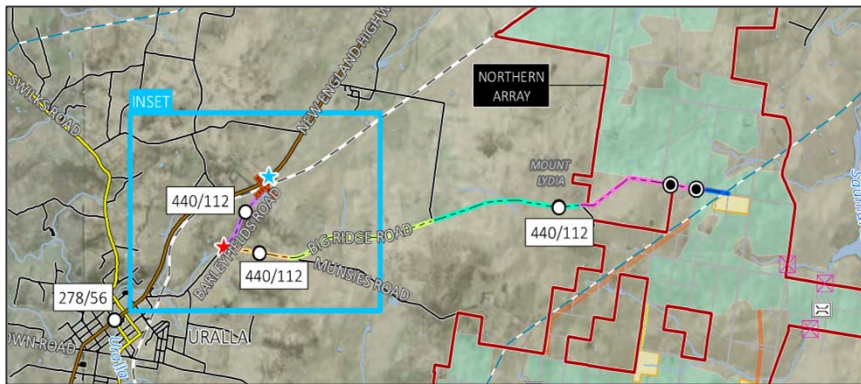
Regional Context



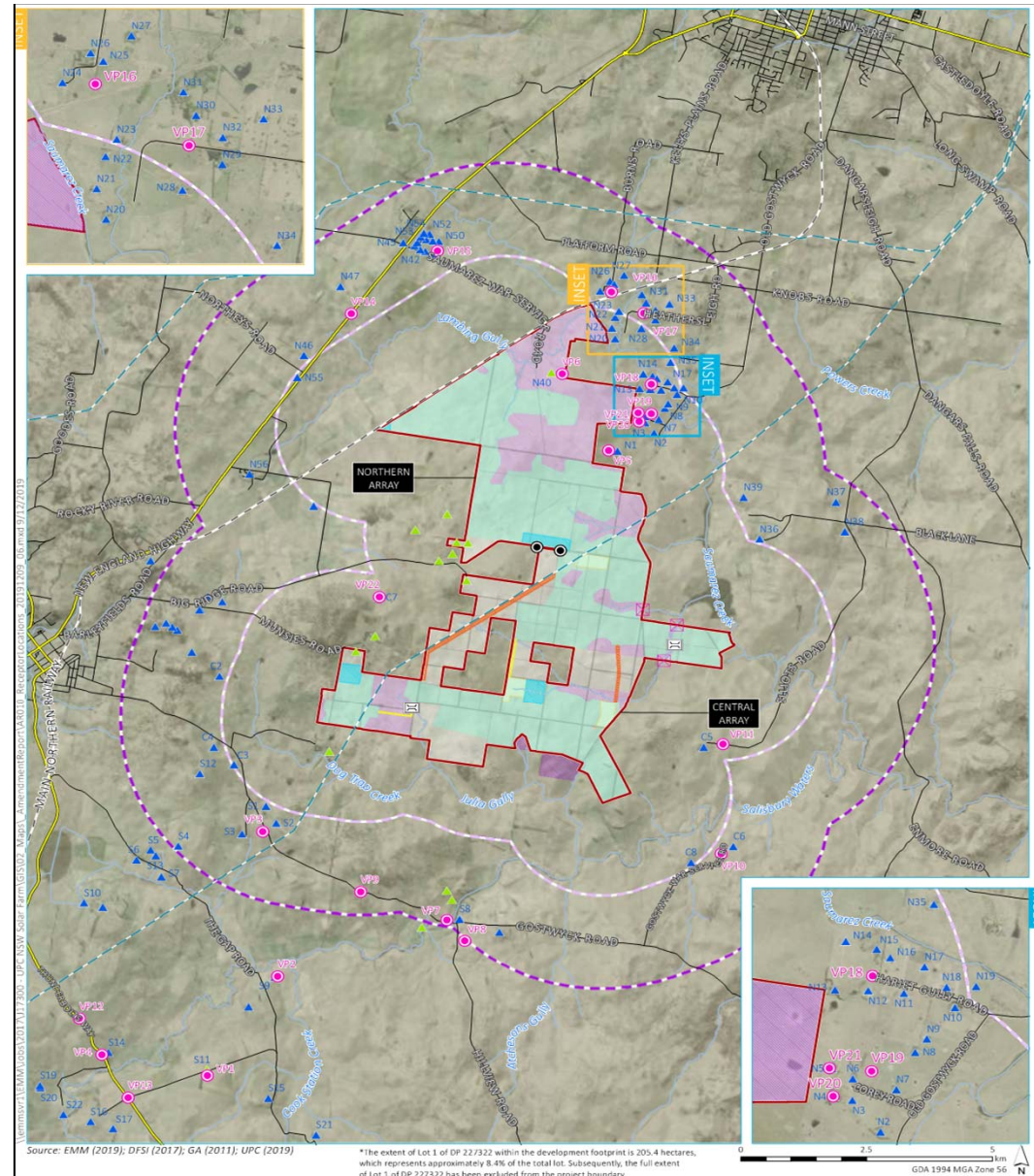
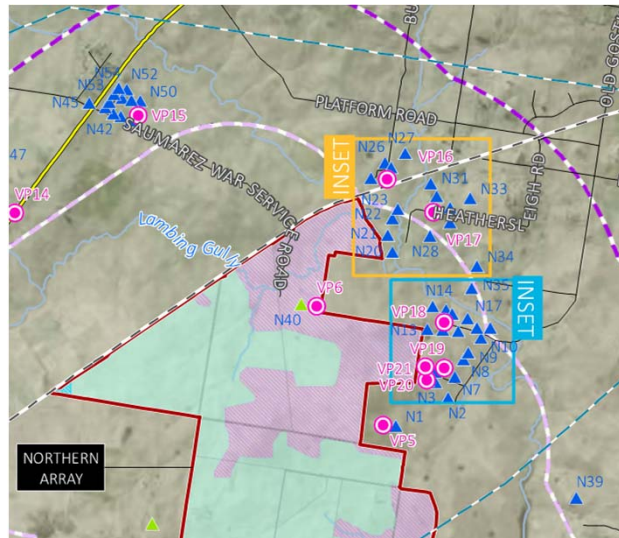
Local Context



Traffic



Visual



Source: EMM (2019); DFSi (2017); GA (2011); UPC (2019)

*The extent of Lot 1 of DP 227322 within the development footprint is 205.4 hectares, which represents approximately 8.4% of the total lot. Subsequently, the full extent of Lot 1 of DP 227322 has been excluded from the project boundary.

KEY

- 330 kV transmission line
- Rail line
- Main road
- Local road
- Watercourse/drainage line
- Distance from development footprint
- Two kilometres
- Four kilometres
- Project boundary *
- Development footprint
- Solar array
- Potential electrical cabling
- Potential site access/electrical cabling
- Potential laydown area/site compound
- Potential substation/BESS footprint
- Potential creek crossing
- Proposed primary site access point
- Indicative location of security fencing across third order watercourses
- Areas to exclude project infrastructure
- Viewpoint location
- Sensitive receptors
- Project-related
- Non-project related

Assessed viewpoints, sensitive receptors and project refinements

New England Solar Farm
Amendment report
Figure 5.6

