

Dear IPCN,

My submission of Objection to Birriwa Solar Electricity Generating Works + Battery Energy Storage System - SSD-29508870 is based on my family's experience as a directly impacted, long suffering neighbour of Fake Green, Environmentally Destructive, Industrialised Solar at Bomen, Wagga Wagga, as a friend of an extremely distressed neighbour of another Environmentally Vandalising Industrialised Solar disaster nearby at Bomen Wagga Wagga - who is now in legal pursuit of the Solar Host, Wagga Council & the typically dodgy Solar Developer.

I am also one of numerous Electricity Consumers suffering from the cruel torture of Skyrocketing RenewaBULL Energy Prices = 'Cost of Living Crisis' - the **complete opposite** of the Government's Solar Guideline Aims & Objectives of 'Cheap, Reliable Energy' & as a Mother & Grandmother who is alarmed & distressed from experiencing the practical impacts of Industrialised Solar which defy all Four Principles of Ecologically Sustainable Development - including NO Social Licence, totally ignoring the Precautionary Principle - despite the inevitable serious, irreversible Toxic Solar Contamination Risks & the Smashing of Intergenerational Equity by unjustly, irresponsibly & deliberately trashing our life-sustaining, uncontaminated Soil Heritage & vital, healthy Water Sources via this non-sensical, ECOCIDAL Fake Green, Energy Poverty Swindle.

After 5 years of repeatedly raising the Toxic Contamination impacts & providing evidence supported by Expert Witnesses, this dodgy Department continues to spew out false propaganda & peddle unsubstantiated codswallop - such as no Solar Contamination unless Panels are "ground to a fine dust" - outrageously accepted by the IPCN - when this clearly is designed to enable money hungry developers to continue their ruination of Australia with NO Scientific basis whatsoever!

This is hardly surprising when the NSW DPIE have unjustly condoned clear Conflicts of Interest - such as the DPIE Planner & Environmental Assessment Officer for FRV's wrongfully Approved, unethical Walla Walla Solar (also heavily involved with much hated Glenellen Solar) immediately becoming the FRV Walla Walla Solar Project Developer!

This glaring Conflict of Interest was further cemented by Federal Energy Minister Bowen's \$100 Million CEFC Debt Financing to get this despicable project started Against the Will of the Community & Greater Hume Council, with 'Greenwashing Microsoft' adding a Power Purchase Agreement to this obvious Fake Green stitch-up!

To quote Director of Energy Assessments Nicole Brewer:-

"In regard to your query about former Department staff being employed by an applicant, I can confirm that his employment with the applicant commenced post approval of the Walla Walla Solar Farm and there was no overlap in his employment with the applicant and the Department."

Director Energy Assessments Nicole Brewer:-

"In regard to your query regarding the issue of contamination, the metals in solar panels cannot be easily released into the environment. This is because the metals are enclosed in thin layers between sheets of glass or plastic within the solar panel. Because of this, the use of metals in solar panels has not been found to pose a risk to the environment. To readily release contaminants into the environment, solar panels would need to be ground to a fine dust."

This is nothing but "confection made up evidence - so lacking in integrity that no weight can be placed on it!"

(Federal Court Judge Justice Natalie Charlesworth - NT Santos Barossa Gas - Dismissed EDO Appeal - 15th Feb 2024.)

ACEN's Birriwa Solar is part of the DISINGENUOUSLY FUDGED NSW INFRASTRUCTURE ROADMAP - the SCANDALOUS FAKE GREEN RENEWABULL SOLAR/WIND ENERGY POVERTY GRIFT & PONZI SCHEME/SCAM THAT'S SHAMBOLIC POLICY MAKING, DANGEROUS TO GRID OPERATION & TOTALLY MAD - OBVIOUSLY IMPLODING AS WE SPEAK MIDST THREATENING BLACKOUTS, BILLIONAIRE SCANDAL, INDUSTRY ABANDONING AUSTRALIA'S SKYROCKETING RENEWABLE PRICES (ADMITTED TO

BY HYDROGEN HYPOCRITE TWIGGY FORREST DITCHING AUSTRALIA - HEADING TO ARIZONA INSTEAD)& ENERGY CONSUMER BACKLASH AS NON-TRANSPARENT ENERGY REGULATORS AEMO/AER/AEMC CLING TO RELIANCE ON THE CONTROLLING CCP & CSIRO'S SUNK COST TRICKERY & BRAZEN DECEPTION - EVER INCREASING THEIR DRACONIAN CONTROL, UNJUST DEMAND TARIFFS & SPONGING ON EVERYDAY CONSUMER'S 'CONSUMER ENERGY RESOURCES' (CER)TO PROP UP A TOTALLY ILLOGICAL, WEATHER DEPENDENT SYSTEM OF ENERGY DEPRIVATION & RATIONING IN A COUNTRY NATURALLY BLESSED WITH FAR SUPERIOR, RELIABLE, EFFICIENT, SECURE & PLENTIFUL 24/7 AUSTRALIAN ENERGY RESOURCES!

This Weather Dependent stuff – Can't Deliver Power on Demand – it only 'Guarantees Economic Misery, Environmental Destruction and Community Disruption!'

The typical Solar Construction & Operation processes make it impossible to 'avoid or reduce the likelihood and extent of Land use Conflicts, Environmental & Social impacts' as claimed.

As a result, there is now Universal Hostility to Pointless, Pathetic, Part-Time Power plans such as this Toxic Birriwa Solar Electricity Generating Works & its Incapable & Dangerous BESS JUNK - which would NEVER be capable of powering 262,000 average households as claimed.

There is a huge discrepancy, as the proponent must have presumed that the Capacity Factor of the Solar Electricity Generating Works is of the order of more than 36% when NO Solar installation in the world has such a favourable capacity factor!

The figure of an actual 17% Capacity Factor (SO Pathetic)should have been used for true figures as calculated from actual long-term AEMO Operational Data for the operational Solar Electricity Generating Works in Eastern Australia (with many thanks to Anton Lang.)

These huge discrepancies require explanation from the proponent.

It is pointless to presume that the proposed BESS Battery will somehow magically make up for the shortfall.

We need to remember that a BESS Battery, as with any other Battery, is NOT a Generator.

In order to supply energy, the Battery has first to be charged with energy.

Given the huge discrepancies found above, there is no opportunity for Birriwa Solar to ever have any spare surplus to charge the BESS unit!

The obvious solution for genuinely Clean, Safe, Reliable, Efficient, Secure, 24/7 Australian Power that would protect Agriculture & be genuinely 'Nature Positive' would be an equivalent Nuclear Power Plant with minimal environmental impact - 1/75th of this 1,300 ha Birriwa Solar site equalling only 17.33 ha!

This is your NET ZERO NO BRAINER!

I have come to the conclusion that the irresponsible, ideologically driven Approving Bodies DO NOT care one bit if our life-sustaining Soil & Water is poisoned or if we die as a result of these illogical, Toxic Contaminating, Fire Hazardous Disasters!

The RenewaBULL Swindle is ALL ABOUT THE MONEY - only persisting to rip-off the public due to Flawed Planning, Fudged Approvals, Authoritarian Dictatorship - which can only be described as Gross Negligence - "a lack of care that demonstrates reckless disregard for the safety or lives of others, which is so great it appears to be a conscious violation of other people's rights to safety."

I welcome the recent comments from Warrumbungle Mayor Ambrose Doolan in calling for an immediate Moratorium, as at least his Warrumbungle Council must be well aware of the Moral Hazard being unjustly inflicted upon Local Regulatory Authorities ie. Councils/Community by the NSW Government - with any Contamination or Pollution of Land & Water caused by these anti-Australian, Unreliable, Weather Dependent, Energy Poverty, Environmentally Destructive, Toxic Contaminating, Industrialised Solar/Wind Electricity Generating Works such as ACEN's

Birriwa Solar Plan - which will inevitably result in irreversible Environmental Harm - ultimately, unjustly being Council's Responsibility/Liability under the POEO Act.

The Department's Claims of Limited Impact beyond this 'High Erosion Risk' site & return to Agriculture are both well proven elsewhere to be completely false!

My own Bomen/Eunony Valley Community has been seriously afflicted by ECOCIDAL Solar JUNK - Against Our Will - since 2019 - with Approval Conditions NEVER met - testament to the typically irresponsible Environmental Destruction - Denuding of the Landscape, Deliberate Sterilisation of Biodiversity & Annihilation of Ecological Habitat, Extensive Water Run-Off & Erosion Damage - ALL DIRECTLY CAUSED BY INDUSTRIALISED SOLAR!

From our own practical experience - ACEN's Birriwa Solar/BESS plan is NOT Clean, NOT Green, NOT Sustainable, NOT Nature Positive, NOT Caring for Country, NOT Zero Emissions & Absolutely NOT for the Greater Good!

Birriwa Solar is Australia Negative with NO Genuine Benefits Whatsoever!

As neighbours to Wrongly Approved Industrialised Solar midst Food Production - we are now personally faced with a disastrous Public Liability Dilemma - making the recently Adopted South Burnett & Fraser Coast Council Motion absolutely vital for ALL Councils to adopt - with an immediate Moratorium until all of the essential points are in place, as today there is NO Scientific Rigour, NO Engineering Facts, NO Integrity & NO Ethics governing this despicable Solar/Wind Industry!

Wise, ethical Councils are starting to realise the devastation that ECOCIDAL Solar/Wind Electricity Generating Works & BESS are inevitably causing.

The Clean Energy Council (CEC) Accreditation Body is 'DRACULAR IN CHARGE OF THE BLOOD BANK' - resulting in Catastrophic ECOCIDAL Chaos! (CEC)

The Adopted South Burnett Council Motion asks that a Moratorium of all large-scale Wind, Solar, Battery Energy Storage Systems, Pumped Hydro and related transmission projects be imposed until:

- 1 a bond is held from start of project with guaranteed finance in place to cover decommissioning and full project removal, disposal and rehabilitation costs at end of life;
 - 2 appropriate regulations are in place to protect threatened and endangered species;
 - 3 large scale renewable projects are subject to full state government approval processes and be made impact-assessable not code-assessable;
 - 4 an appropriate land access framework to protect the environment, cultural heritage, existing land users and local roads and infrastructure is established;
 - 5 minimal impact upon existing rate payers is negotiated;
 - 6 Australia's food security is protected by prohibiting large scale renewable projects on prime agricultural land; (See Paris Agreement Article 2 (1) (b));
 - 7 all large-scale renewable projects comply with the same regulations that apply to agriculture and mining;
 - 8 large scale renewable projects are added as a trigger to the EPBC Act;
 - 9 a mandatory code of conduct is established to govern the renewable energy sector and renewable energy proponents 'conduct with affected communities including notifying the relevant local Government of potential projects
 - 10 owners of large-scale renewable developments indemnify adjoining private landowners from any public liability risk;
 - 11 Where Local Government are the assessment agency that appropriate mechanisms are incorporated in local government planning schemes to allow Council to apply conditions that protect local roads & infrastructure and other key assets
- South Burnett Mayor Duff said "Renewable projects are already impacting our communities and causing a lot of concern. There needs to be proper planning and guidelines put in place to ensure that they are in places that have minimal impact on our region's environment and natural beauty, to protect our communities and particularly our agricultural industries that provide our food and fibre"
- Media release from South Burnett Regional Council detailing the motion: https://www.southburnett.qld.gov.au/news/article/2570/managing-renewal-projects-in-the-south-burnett?fbclid=IwZXh0bgNhZW0CMTEAR3AXfxlYXvnbG5A94by9LO8s3Du1nIKd4m2f8b4tJqVnJb7ZeqmAhRo_aem_ARdeXUAOyJHcP4Rn5c2RlgrhtBVIENa-E6bNsY-OTABeerTB6XtrV1bmgKnlY6MzroDMt_XiQQQIiG7VPCbZFK8K

PROPERTY RIGHTS AUSTRALIA SURVEY RESULTS CLEARLY REVEAL THAT:- 'AUSTRALIANS VOICE SIGNIFICANT DISTRUST IN RENEWABLE ENERGY PROJECTS: URGENT CALL TO RETHINK RENEWABLES'

22 May 2024

<https://propertyrightsaustralia.org.au/australians-voice-significant-distrust-in-renewable-energy-projects-urgent-call-to-rethink-renewables/>

Additional Omissions which the Department Intentionally Ignore include:-

***The Developer's/Department's Minimal 30 metres to mitigate 'Heat Island Effect'** is only relevant to the tiny 13 ha Arizona 'Research' site - so clearly debunked by Peter Hall & Professor Greg Barron Gafford during questioning for the Shepparton Solar Hearing - clarifying that proper Research - commensurate with the large scale & specific climatic conditions needed to be done to properly determine the real practical 'Heat Island Effect' impacts
The Large-Scale Solar Guidelines have deliberately verbalised Professor Gafford - misconstruing his evidence - thus failing to include these facts in order to prioritise Developer baloney instead

***Practically Dealing with Massive Toxic Waste Burden from common events like Hail & Fire has NOT been included by the Department.**
Their claims of 'Waste generated throughout the operation of a Solar energy project is typically negligible, except for waste generated from repair and maintenance activities'

are disingenuous & not representative of the present & looming, unplanned for, toxic contaminating Solar Waste burden

***The Department's Assessment Approval is careless & irresponsible regarding life threatening Toxic Solar Fires/Carcinogenic & Teratogenic Smoke. NSW Fire & Rescue admit they have done NO research whatsoever regarding Industrialised Solar Fire risks .**

This is nothing but an irresponsible life threatening Experiment!

NSW Fire & Rescue state:-

“There is a general lack of guidance and provisions in building codes, standards, and legislation in relation to safety to address the potential risks from these emerging technologies. Part of the problem is that we do not yet know enough about their probability of failure, their mechanisms of failure and potential consequences of failure.”

There is no adequate ‘Incident Response to Industrial Solar Electricity Generating Works Fires’ - Safety Alert No. SA-15-23 Effective Date: 21/11/2023 Version: 2.0 Queensland Fire & Emergency Services.

Response:

- Self Contained Breathing Apparatus (SCBA) must be worn when working around burning solar panels and BESS due to the highly toxic gases Under no circumstances should an officer go into the smoke or approach a fire without the correct respiratory protection
 - As RFS do not carry SCBA, RFS officers must not undertake a direct attack of solar panels that are burning, or operations that require crews to work in smoke from burning solar panels RFS officers will be restricted to fighting exposure fires where the Solar Farm is not burning
 - Isolation of electricity production on solar farms must only be undertaken by an authorised person for the Solar Farm site
 - QFES Staff and volunteers are not to enter the solar farm property until an appropriately qualified electricity representative from the Solar Farm is onsite and deems the area safe to enter, and safe to investigate smoke or undertake fire response activities
 - Do not put water on Solar Panels Emergency responders are to treat all wiring and solar module components as though they are electrically energised
 - Bush Fire Air Operations should operate upwind from the smoke plume of Solar Farm Fires due to the toxicity of the gases and visibility for the aircraft The aircraft will also attempt to avoid hitting solar panel arrays with firebombing loads due to possible damage to structures and panels
 - When fighting wildfires in the vicinity of a Solar Farm, officers will need to, as per doctrine, wear negative pressure masks with MPC canisters
- Post-Response:
- Responding crews to ensure that all PPC are laundered correctly due to the contaminants

*Whilst ACEN proudly describe their other Taxpayer subsidised, obnoxious Fake Green Solar projects as Clean, Green, Sustainable & Ethically sourced, it is particularly notable that this whole narrative is a bald faced lie!

Their obnoxious New England Solar - Uralla is an inevitable Contamination disaster - constructed with cruelly tortured Uyghur Slave Labour Supply Chain linked Jinko Solar Panels & likewise, Gulgong's revolting Stubbo Solar is now being Constructed using unethical JA Solar & Risen Solar Panels.

Industrialised Solar is not only Unethical, it's Dangerous to the Public & NOT supporting Australian Jobs.

With 3x B-Double Rollovers occurring within approximately a month - all driven by inexperienced Visa Drivers - this is a Traffic Hazard Nightmare!

Littering the Denman area with extensive, broken, toxic contaminating Solar panel waste - spilling into running water, adjacent Food Growing Land is NOT one bit Clean, Green or Sustainable!

This is serious/irreversible Environmental Harm that is carelessly being intentionally ignored by ALL associated with the RenewaBULL Industry & ALL Approving Government Bodies!

With packaging of these panels clearly marked ‘JA Solar’ - directly linked to Uyghur Slave Labour Supply Chains - it's pretty clear that the SOLAR/WIND INDUSTRY IS IN GLARING DEFIANCE OF THE NSW PARLIAMENT MODERN SLAVERY ACT 2021 & the NEW MODERN SLAVERY CONDITION that NO Slave Labour components will be used in construction.

***ACEN'S Birriwa Solar Electricity Generating Works' is in Defiance of the Paris Agreement as Toxic Contaminating Industrialised Solar/BESS Threatens Our Food Security, Energy Security, Economic Prosperity & National Security!**

2015 PARIS AGREEMENT – Article 2 (b) Increasing the ability to adapt to the adverse impacts of climate change and foster climate resilience and low greenhouse gas emissions development, IN A MANNER THAT DOES NOT THREATEN FOOD PRODUCTION.

*There is no requirement for or mention of **Bunding** to contain toxic, heavy metal leachate as it washes from intact panels on site as they age, degrade, if broken, damaged, inferior, if fractured by Hail or burnt by Fire, nor the requirement to coat toxic PV when fractured by Hail, nor the outline of immediate, practical clean-up action from widespread Hail Damage or Burnt panels

Birriwa's productive 1300 ha site & surrounding land/water will be cursed with Inevitable, Serious/Irreversible Contamination from ACEN's planned

1 0 -1 4 million Toxic Classed Solar PV Panels & multitudes more from the cumulative REZ impacts of Toxic Industrialised Solar which the Local Regulatory Authority - the Council/Ratepayers will inevitably be responsible/liable for

My family experienced this unacceptably irresponsible, flawed scenario after a severe Hail Storm fractured thousands of panels in their area in October 2020 with broken panels left in situ leaching environmentally harmful contaminants - with nothing cleaned up at all for 10-11 months & some panels carelessly still left broken years later

If this productive Birriwa land is entombed in Toxic Solar JUNK for decades by ACEN, this presently uncontaminated, essential, irreplaceable Food producing arable land - our rich soil heritage - will **NEVER be returned to its inherent, naturally healthy Food Resource Land capability under present Approval Conditions because the Department deliberately ignore these common scenarios!**

Without life sustaining healthy food & uncontaminated water we will die

ANYONE WHO EATS - AND THAT'S ALL OF US - NEEDS TO CARE ABOUT THIS!

Without reliable, efficient & affordable power people will also die of hyperthermia!

BAD BUREAUCRATS & POLITICIANS FESTERING IN OUR MIDST ARE PUTTING FAKE GREEN VESTED INTERESTS BEFORE PUBLIC HEALTH & SAFETY OF THE PEOPLE THEY WORK FOR & REPRESENT.

They have no intestinal fortitude to stand up for the Truth against RenewaBULL Lies & Deception & NO Ethical Integrity to support the Moral Imperative to Oppose Shameful Child Labour Mining of Cobalt in the Congo & Reliance on CCP Uyghur Slave Labour Supply Chain Produced Solar Panels

"YOU KNOW, THE VERY POWERFUL & THE VERY STUPID HAVE ONE THING IN COMMON.

THEY DON'T ALTER THEIR VIEWS TO FIT THE FACTS.

THEY ALTER THE FACTS TO FIT THEIR VIEWS."

(Dr Who 1977.)

Once our precious Rural outlook is lost we'll NEVER get it back

IT'S AGRICULTURE THAT'S PROVIDING ESSENTIAL HEALTHY FOOD & PRESERVING THE GREENNESS - WE DON'T WANT IT CONTAMINATED WITH TOXIC SOLAR PV - GLASS, GALVANISED STEEL, ELECTRICAL CABLES & CONCRETE!

From

Lynette LaBlack

REFERENCES

From: [REDACTED]
To: [Do-Not-Reply IPCN Submissions Mailbox](#); [IPCN Enquiries Mailbox](#)
Subject: Birriwa Solar IPCN Reference
Date: Friday, 14 June 2024 5:32:14 PM

Dear IPCN,

As already referenced in my Submission, these are the workings provided by Paul Miskelly - Master of Electrical Engineering - Thursday 06 June 2024.

PROPONENT ACEN's CLAIMS APPROVED BY NSW DPHI for the numbers of households supplied - "It will generate enough energy to power approximately 262,000 average Australian homes" are DEAD IN THE WATER!

These huge discrepancies require a clear explanation from the proponent showing, in detail, how the calculations were performed and what assumptions were used.

Birriwa: Number of homes supplied - the story so far..... 6th June 2024

Birriwa Solar and Battery Project

According to the proponent:

(a) The solar component will comprise 1.0 – 1.4 million solar PV panels. It will have a capacity of around 600 megawatts (MW)

(b) The battery component, called a BESS, or a Battery Energy Storage System, is to have a capacity of up to 600 MW for 2 hours.

It is claimed by the proponent that:

"It will generate enough energy to power approximately 262,000 average Australian homes."

This claim can be tested readily enough.

To obtain official data on household electricity and gas consumption, I have referred to the publication by the Australian Energy Regulator (AER) entitled:

"Residential Energy Consumption Benchmarks", published on 9 December 2020,

and available at:

https://www.aer.gov.au/system/files/Residential%20energy%20consumption%20benchmarks%20-%209%20December%202020_0.pdf

I have chosen data from that very comprehensive document for what the authors refer to as Climate Zone 5. See Table 16 on page 37. According to the preamble in section 4.2.4. Climate Zone 5:

"The sample includes 1,908 households in Climate Zone 5. This includes 1,339 in New South Wales and 505 in South Australia. Climate Zone 5 covers several metropolitan areas including greater Sydney and Adelaide. The remaining 64 are in Queensland, in a small pocket to the immediate west of Brisbane."

I have chosen the Climate Zone 5 data as being representative of the household consumption patterns in the region of temperate zone Eastern Australia in which the proposed Birriwa Project is to be sited.

From that same Table 16, I have chosen the data as representative of households in NSW, that is, covering the wider region within which the Birriwa Project is situated, and which therefore it is most likely to supply.

Note the table heading:

"Table 16: Climate Zone 5: Electricity consumption benchmarks by household size (kWh)"

State/Territory	Household size	Summer	Autumn	Winter
NSW	1	732	745	927
NSW	2	1,278	1,232	1,565
NSW	3	1,530	1,503	1,903
NSW	4	1,819	1,717	2,148
NSW	5+	2,158	2,082	2,761
Spring	705	1,162	1,425	1,627
				2,007

I have chosen the line for a household of 4 persons. What I propose to do here is to obtain the

annual average consumption of a representative household. This is easily obtained by adding the 4 seasonal data values on the chosen line: $1,819 + 1,717 + 2,148 + 1,627 \text{ kWh} = 7,311 \text{ kWh}$.

This total figure then is the average energy used during a calendar year by a 4-person household within this Climate Zone 5.

The proponent claims that the proposed Birrawa Solar Generator will supply 262,000 homes. The total annual energy consumption in a calendar year, of 262,000 homes, of a household size of 4 persons, in Climate Zone 5 is quite simply determined by multiplying the total determined above, that is 7311 kWh by the total number of such representative homes.

$7,311 \text{ kWh} \times 262,000 \text{ homes} = 1,915,482,000 \text{ kWh}$

Convert this number to MWh by dividing by 1000 (1 MWh = 1000 kWh)

The total annual energy consumption of 262,000 average 4-person households in Climate Zone 5 is: 1,915,482 MWh

What is required now is an estimate of the total energy able to be supplied in a calendar year by the proposed Birrawa Solar Generator. The figure will be of necessity be approximate, because the proponent states that the installed capacity of the proposal is to be around 600 MW.

On that basis, I will assume the maximum value of 600 MW as the installed capacity of the Birrawa solar "farm".

The Capacity Factor, or average output, of a solar "farm" in Eastern Australia, based on the long-term average of AEMO-supplied actual 5-minute operational data of the solar "farms" in Eastern Australia is approximately 17 percent.

So, to determine the potential annual energy available from a 600 MW solar "farm" in Eastern Australia, (in MWh), that is, in one calendar year, it is a matter of doing the following calculation: Average MW times 24 hours/day times 365 days per year times the Capacity Factor, the result being in MWh.

Essentially it is a matter of multiplying the MW value by the number of hours in a year.

$(600 \text{ MW}) \times (24 \text{ hours/day}) \times (365 \text{ days/year}) \times (\text{Capacity Factor})$.

$600 \times 0.17 \times 24 \times 365 = 893,520 \text{ MWh}$

Thus, the total energy available from a 600 MW installed capacity solar "farm" in Eastern Australia is: 893,520 MWh. However, from the above calculation, the annual energy requirement for 262,000 average 4-person homes in Zone 5 in Eastern Australia is 1,915,482 MWh.

Thus, there is a shortfall in generator output of some $1,915,482 - 893,520 = 1,021,962 \text{ MWh}$

To overcome the discrepancy, the proponent must have presumed that the solar "farm"'s

Capacity Factor is of the order of 0.3644.

No solar installation in the world has such a favourable capacity factor.

As stated earlier, the figure of 0.17 used above is that calculated from actual long-term AEMO Operational Data for the operational solar "farms" in Eastern Australia.

Given that the total energy actually available from a 600 MW solar generator is of the order of 893,520 MWh, the number of 4-person homes in Zone 5 that may be supplied is:

$893,520,000 \text{ kWh} \div 7,311 \text{ kWh} = 122,216 \text{ households}$.

While it is tempting to repeat the calculation for a smaller household, it is preferable to stay with the worst-case scenario.

Note: Using, say, the 2-person household data in the table above, the 600 MW solar "farm" annual output still falls far short of even that requirement: 1,372,094 MW, by 478,574 MWh.

Conclusion 1 The above analysis shows that the claim by the proponent that the solar "farm", presuming that it has an installed capacity of 600 MW, that it will supply 262,000 average homes, can best be described as wildly optimistic.

These huge discrepancies require a clear explanation from the proponent showing, in detail, how the calculations were performed and what assumptions were used.

Effectiveness of the BESS Storage

Often not stated in proposals by proponents of renewable generation is that a BESS battery, like any other battery, is NOT a generator, and may NEVER be considered to be a generator. Glossed over as an unimportant detail is the simple fact that a lithium-ion technology BESS battery, like any other rechargeable battery, must first be charged with electrical energy before it can supply electrical energy.

At the page: <https://acenrenewables.com.au/project/birriwa-solar/>, the proponent states:

“The solar component of the project will have a capacity of around 600 megawatts (MW) and include a centralised Battery Energy Storage System (BESS) of up to 600 MW for 2 hours. The BESS will enable energy from solar to be stored and then released during times of demand.” Given the discrepancy – a huge shortfall - found above, between the proponent’s claimed number of households supplied (262,000) and that shown by this analysis (122,216), it would seem that, if attempting to supply the demand resulting from the load of 262,000 households, the solar generator would have little, if any, excess electrical energy to spare for such as charging the associated BESS. In such circumstances, to a first approximation, it is therefore pointless to even begin to presume that for the purpose of recharging the proposed BESS battery, after using up its initial charge, the solar generator might somehow magically be up to the task, given the sheer magnitude of the shortfall found above. In brief: the BESS battery would remain permanently flat.

Although then, there would seem to be no opportunity for the solar “farm” to ever have any spare surplus to charge the BESS battery unit, nonetheless, for reasons stated below, it is useful to conduct the exercise to determine, whether or not the BESS, when fully charged, might itself be capable of supplying the claimed number of households.

Ability of the BESS to supply the claimed number of households

It is an oft-forgotten fact, in a world dominated by discussion of average outputs, that solar panels produce no electricity whatsoever, all night, every night, 365 days per year. (And also on the night of the extra day of the leap year, in case that needs to be explicitly stated!)

Any associated battery storage must therefore make up the shortfall, this being the full requirement of any power generated by the solar facility, for 12 of the hours, at the very least, of every 24-hour day of the year, (the 12 hour period being an average value for the period known as “nighttime”).

The proponent states that the proposed BESS has a storage capacity of 600 MW times 2 hours. That provides a potential maximum storage capacity of 1200 MWh.

Presuming that the BESS battery is fully charged at any given sunset, and not allowing for losses, (which are indeed significant, and will be required to be fully accounted for in any detailed analysis), the question is: how many homes will the battery be able to supply during the 12 hours of the nighttime period?

Remember, for a worst-case scenario, that 12 hour period is a minimum length for the time requirement: on winter nights, the nighttime period is even longer.

To do the calculation, I am going to use the 4-person household winter figure of 2148 kWh from the same table, reproduced above, from page 35 of the same AER document cited above, available at:

https://www.aer.gov.au/system/files/Residential%20energy%20consumption%20benchmarks%20-%209%20December%202020_0.pdf

First, the energy used by 1 home of 4 persons on average, during winter in 12 hours is: 11.802 kWh.

To derive that figure, that's 2148 kWh from the table above, divided by the 91 days of winter, divided by 2 for half a day. Result: 11.802 kWh.

Remembering, when fully charged, the battery can store 1200 MWh. That's 1,200,000 kWh.

To calculate the number of homes that the battery, when fully charged, can supply for 12 hours is simple division:

The number of homes that can be supplied during the night, presuming 12 hours duration, is 1,200,000 kWh divided by 11.802 kWh.

Result: - rounded up - 101,676 homes.

Nights in winter are longer than 12 hours, more like 15 hours. Multiply our number by 12/15.

That's 81,341 homes.

If the weather is expected to be cloudy during the following day, then it's more than likely that the battery will be required to supply through the day, and, of course, all of the following night. This period would be a minimum of 36 hours. This results because the battery cannot be recharged by the solar “farm”, because, during cloudy weather, the worst-case scenario is that it cannot generate power.

The number of homes that can be reliably supplied throughout this extended 36-hour period crashes to some 33,892 homes.

Conclusion 2 At night, during the winter months, the battery can supply, at most, some 80,000 homes.

Conclusion 3 The battery capacity is the immediately limiting factor in any calculation as to the total number of homes that can be supplied.

That last conclusion stated, and this is the primary “show-stopper” to any claims otherwise by the proponent, the secondary, but vitally important consideration to any such optimistic claims by the proponent as to households served, is that the solar “farm” can have no spare generation available, ever, to re-charge the BESS battery. Thus the claim is doubly a total exaggeration.

And, the proponent may need to be reminded: when addressing critical matters such as reliability of supply to the customer, the worst-case scenario MUST be the one used.

The calculation that I have conducted above is NOT worst-case by a long shot. Round-trip BESS battery losses have not been considered, simply because the proponent’s claims can be shown to be wildly exaggerated without the consideration of such losses. Inclusion of the known losses, and they are considerable, would reduce the figure for the estimated of number of households served even further.

So, for numbers of households supplied, the proponent's claim is dead in the water!

(Paul Miskelly - Master of Electrical Engineering - Thursday 06 June 2024.)

From

Lynette LaBlack



From: [REDACTED]
Subject: [REDACTED]
Date: Friday, 24 June 2023 5:11:04 PM

Modern Slavery, Solar Contamination, Embedded Energy, Solar s Heat Effects, etc.

From Lynette LaBlack
[REDACTED]

TWO NEW PRECEDENTS HAVE BEEN SET by Oxley Bridge Rd Uranquinty Solar Determination 24th Nov 2022 - NEW MODERN SLAVERY CONDITION & AMENDED STORMWATER MANAGEMENT PLAN (re CONTAMINATION.)

****Professor Ian Plimer's 3 minute presentation regarding Solar Panel Contamination Risks.**
PPSSTH-149 - DA22/0122 - 1268 Oxley Bridge Road Uranquinty 2652
<https://www.planningportal.nsw.gov.au/planning-panel/electricity-generating-works-solar-farm-8>

****Hail Storm Photos & Industrialised Solar Contamination Risk to Our Reliably Productive Food Bowl at Bomen, Wagga Wagga** Photo are included via this link also - the Hail Stones & some of the Fractured Solar Panels from the damaging 31st Oct 2020 event that left masses of broken Solar panels in situ for a shocking 10 - 11 months without Due Care - with some panels still remaining fractured & leaching contaminating heavy metals years later!

1. NEW MODERN SLAVERY CONDITION- requiring proof prior to construction that NO Slave Labour supply chain components be used in construction.

****New Condition Inserted C4A - Dealing With Modern Slavery.**
Commonwealth Modern Slavery Act 2018

***NSW Local Council Act 1993**
428 Annual Report
438 ZE Duty to Ensure Goods & Services Are Not Procured From Modern Slavery.

This applies to all NSW Government Bodies - including Councils - for those who Host, Procure or have a Power Purchase Agreement with Solar/Wind Energy Generation/BESS whose construction has used Modern Slavery Supply Chain Sourced Components
eg. City of Sydney, the Opera House, Kiama, Shoalhaven, Shellharbour Councils & Westpac, etc. have an unethical PPA with Spark Infrastructure s Xinjiang Jinko Solar based Bomen Solar - unethically Hosted by Wagga City Council.
REROC has an unethical PPA with Iberdrola - with Xinjiang JA Solar based Avonlea Solar - unethically Hosted by Narrandera Shire.

2. AMENDED STORM WATER MANAGEMENT PLAN CONDITION re-CONTAMINATION – QUALIFIED TESTING/REPORTING, CONTAMINATION RESPONSE PROCEDURE, etc.

****Amended Condition C8.**
Prior to Commencement of Any Works - Storm Water Management Plan.
On Site & Discharge From the Site.
Testing Points & Regular Water Samples, Suitably Qualified Person.
Written Response Procedures if CONTAMINATION is Found - required PRIOR to CONSTRUCTION.
Availability of Results.
.....

Dr James Cockayne
NSW Anti-slavery Commissioner
[REDACTED]

Carolyn Kitto 'Be Slavery Free'
[REDACTED]

Ramila Chanisheff
Australian Uyghur Tangritagh Women's Association - AUTWA
[REDACTED]

Slave Labour Supply Chains
Missing Information Thwarts Ethical Sourcing
Murphy and Crawford s report, Over-Exposed Uyghur Region Exposure Assessment for Solar Industry Sourcing

Over-Exposed | Sheffield Hallam University updated Nov 2023
<https://www.shu.ac.uk/helena-kennedy-centre-international-justice/research-and-projects/all-projects/over-exposed>

Over-Exposed | Sheffield Hallam University
<https://www.shu.ac.uk/helena-kennedy-centre-international-justice/research-and-projects/all-projects/over-exposed>

****The graphs indicating companies & solar panels connected to Xinjiang are in the following link -**
****Xinjiang Solar Panels - Uyghur Slave Labour/Concentration Camps/Genocide - 'In Broad Daylight' - Professor Laura Murphy**
<https://www.shu.ac.uk/~media/home/research/helena-kennedy-centre/projects/pdfs/evidence-base/in-broad-daylight.pdf>

****The Office of the United Nations High Commissioner For Human Rights**
<https://www.ohchr.org/sites/default/files/documents/countries/2022-08-31/22-08-31-final-assessment.pdf>

****Australia ratifies International Forced Labour Protocol | Australian Minister for Foreign Affairs Minister for Women Marise Payne**
<https://www.foreignminister.gov.au/minister/marise-payne/media-release/australia-ratifies-international-forced-labour-protocol>

****Implementation of the Magnitsky Act is another avenue to ensure this shamefully unethical industry is not exploited in Australia.**

****BLOOD BATTERIES - THE DARK SIDE OF ELECTRIC VEHICLES - Gravitas Plus YouTube**
<https://m.youtube.com/watch?v=RFHvq-8npl0>

****THE DISTURBING REALITY OF COBALT MINING FOR RECHARGEABLE BATTERIES.**
"CLEAN COBALT IS A FICTION - THERE IS NO CLEAN COBALT - IT'S ALL MARKETING!"
People need to get educated so they are agitated about it enough to do something to change this.
<https://www.news.com.au/finance/business/mining/harvard-professor-explains-heartwrenching-source-of-electric-vehicle-iphone-batteries/news-story/db881f47c76db89581409c092a740c4c>
Joe Rogan exposes sad truth about cobalt used in electric vehicle, iPhone batteries |news.com.au — Australia s leading news site.
Cobalt is in all iPhones, tablets & crucially EV's - it maximises charge & stability.
Before anyone knew what was happening the Chinese Government & Chinese companies took control of almost all of the big mines in the Congo, with the local population displaced & the Congolese people under duress - digging in subhuman, gut wrenching conditions - using all raw human force - clanking the cobalt out of the ground!
Throughout the whole history of slavery, never has there been more suffering that generated more profit than was linked to more lives of people around the world than what is happening today in the Congo - mining cobalt in appalling, heart wrenching & dangerous conditions.
.....

****Sediment Run-Off Contaminating Land/Water - Court Case -**
"Created, Operated, and Maintained a Nuisance"
Solar farm runoff pollutes property, couple awarded \$135 million - CFACT
<https://www.cfact.org/2023/06/06/solar-farm-runoff-pollutes-property-couple-awarded-135-million/>
By Bonner Cohen, Ph. D. June 6th, 2023

25th Oct 2023 update ...A federal judge has dramatically reduced a jury s \$135 million award to a Georgia couple (<https://www.ajc.com/news/couple-awarded-135m-after-solar-project-turns-their-lake-to-mud-hole/BZ6BYXQREJCDOQV6ZASUW5W0I/>) whose property was fouled by muddy runoff from a solar project next door down to \$5 million, after objections from the plaintiffs in the case.
In an order issued Monday in the Middle District of Georgia, Judge Clay D. Land wrote that the punitive damages awarded to the couple were worth many magnitudes more than the property that was damaged, and therefore were excessive.

Unsurprisingly, connected with this RenewalBULL Junk ruination is the Woke, virtue signalling, GREENWASHING of the BIG TECH, BIG ENERGY USER DATA CENTRE:-
'Solar development was built to serve a data center owned by the parent company of Facebook'

****The Starting Step for the Production Of Pure Silicon....SiO2 + C -> Si + CO2 ...IS the Heart of the Solar Panel!**

****Every step in the production of Solar PV power systems requires an input of fossil fuels - as the carbon reductants needed for smelting silicon from ore, to provide manufacturing process heat and power, for the intercontinental transport of materials, and for on-site deployment.**
<https://www.azbackroads.com/around-the-west/rangefire-massive-amounts-of-coal-and-wood-must-be-burned-to-create-solar-panels/>

**** Coal's Importance For Solar Panel Manufacturing – Watts Up With That?**
<https://wattsupwiththat.com/2024/05/23/coins-importance-for-solar-panel-manufacturing/>

****200 Million Tonnes of Toxic Solar Panels Destined For Landfills Near You**
stopthesethings.com

****Subject:** Galvanised Steel supports
<https://www.facebook.com/share/p/srbXaCbKgVXoegsm/?mibextid=x6F2i>

James Falcsik White County Indiana Residents Against Solar
21h ·

The hazardous materials that exist in solar panels receive a lot of attention out of concern they will leach out into the soil over time, especially if they are damaged by weather events. Has anyone considered what happens to the soil and ground water on a farm that is converted to thousands of acres of solar panels, with tens of thousands of buried ten-foot-long galvanized steel I-Beams driven into the soil to support the racking systems?

The 13-acre solar farm I worked on used more than 900 galvanized steel columns. Now I am an electrical guy, not a farmer or an agricultural specialist. The zinc coating of galvanized steel corrodes at a higher rate in soils with a Ph lower than 7.0. It gets more complicated when copper is present and the soil acts as an electrolyte. When galvanized steel corrodes it can leach cadmium, lead, and zinc into the soil. In fact, the EPA warns that "cadmium can be released to

drinking water from the corrosion of some galvanized plumbing and water main pipe materials.” The USDA states “galvanized metal containers are not safe to serve food and drinks in. The acidity of the food or drink could dissolve the zinc coating allowing it to leach into the food or drink.” So, what happens to the rich agricultural soil that is made a pin cushion by all these galvanized steel columns that support solar panels for 25 years? Does this make a case for base line soil and ground water testing as part of solar zoning requirements BEFORE a solar developer starts to build, and periodic testing for the life of the solar facility? The solar developer should also bear the cost of this testing, not the taxpayer.





****SARET Research - Fire and Rescue NSW** have NO IDEA How to Deal With RISKY RenewaBULL Experiments - YET This TOXIC MORAL HAZARD is Deliberately Forced on us by the Dodgy, Deceitful DPE & Complicit IPCN!
<https://www.fire.nsw.gov.au/page.php?id=9402>
"There is a general lack of guidance and provisions in building codes, standards, and legislation in relation to safety to address the potential risks from these emerging technologies. Part of the problem is that we do not yet know enough about their probability of failure, their mechanisms of failure and potential consequences of failure."

On a Qld state government web site you can look up to see if a FIRE is going. It is a satellite image of reflective heat. It shows LARGE SOLAR FACTORIES to be on FIRE when they aren't. It's picking the heat coming off the panels!

Electrical Engineer Paul Miskelly's opinion -

"The energy in the sunlight that strikes solar cells that is not converted to electricity will be absorbed and converted to heat. This will be re-radiated to the atmosphere. There goes your unconverted 80 percent. By comparison, even though plants re-radiate the energy in the green part of the visible spectrum - that's why they look green - clearly they are doing a lot better job of absorbing and using the energy in the other parts of the visible spectrum than can solar cells. That this is correct is confirmed by the satellite image of reflective heat. That looks to be irrefutable evidence that solar panels re-radiate heat, and lots of it."

SOLAR ELECTRICITY GENERATING WORKS ARE THUNDERSTORM & TORNADO INCUBATORS & MAGNETS!

Subject Opinion from USA Aerospace Engineer who is also fascinated by physics and climate science -

George Franklin
 Solar panels are at best about 20% efficient. They convert almost 0% of the UV light that hits them. None of the visible spectrum and only some of the IR spectrum. At the same time as they are absorbing light they are absorbing heat from

the sun. This absorbed heat is radiated into the adjacent atmosphere. It should be obvious what happens next. When air is warmed it rises. Even small differences in ordinary land surfaces are capable of creating powerful forces of weather like thunderstorms and tornadoes. These weather phenomena are initiated and reinforced by land features as they are blown downwind. It is all too obvious to me what will happen with the heat generated by an entire solar farm. Solar farms will become thunderstorm and tornado incubators and magnets.

Solar panels are dark and they emit energy to the space above them when they are not being radiated. This is known as black-body radiation. Satellites flying in space use this phenomenon to cool internal components. If they didn't do this they would fry themselves.

So solar farms not only produce more heat in summer than the original land that they were installed on, but they also produce more cooling in winter, thus exacerbating weather extremes.

So I conclude with this. There is nothing green about green energy except the dirty money flowing into corrupt pockets.

There is no such thing as green energy. The science doesn't exist. The technology doesn't exist. The engineering doesn't exist. We are being pushed to save the planet with solutions that are worse than the problems."

From: [REDACTED]
To: [Do-Not-Reply IPCN Submissions Mailbox](#); [IPCN Enquiries Mailbox](#)
Subject: Birriwa Solar IPCN - Fwd: Transportation of Solar Panels for Central West REZ
Date: Friday, 14 June 2024 5:38:21 PM

Dear IPCN,
Please find information from ACEN's Stubbo Solar confirming their use of Unethical Uyghur Slave Labour Supply Chain linked JA Solar Panels & Risen Solar Panels.

Begin forwarded message:

From: Stubbo Solar [REDACTED]
Date: 12 June 2024 at 1:39:21 pm AEST
To: [REDACTED]
Subject: Re: Transportation of Solar Panels for Central West REZ

Hi Lynette,

Please find the answers, as provided to you on the phone today:

- *Stubbo Solar Construction Company: **PCL Construction**
- *Brand of Solar Panels being used for Construction. **JA Solar and Risen**
- *Logistics - Transport Company delivering Solar Panels. **PCL Construction have sub-contracted DP World for transport logistics**
- *Port of Origin **Panels are arriving to Port Botany (Sydney) and then transported to site via approved Traffic Management Plan.**
- *Transport Route: **The approved transport route for the Stubbo Solar project can be found under Documents on the Stubbo Solar project website which can be found by [clicking here](#).**
- *ACEN New England Solar Uralla Construction Company: **GLC was the construction company that constructed the New England Solar Project. As advised, New England Solar is now in operation.**

Should you require further information on the New England Solar project's construction, you can find this on the project's website which can be found by [clicking here](#). or by contacting the team at [REDACTED]

Kind regards

Kerrie on behalf of **Stubbo Solar project**

From: [REDACTED]
To: [REDACTED]
Subject: [View this email in your IPCN Submission Mailbox](#); [IPCN Enquiries Mailbox](#)
Sent: 50 air Presentation
Date: Friday, 14 June 2024 4:40:10 PM

Dear IPCN,
Please include the following photos as References for my Submission

Thank you.



Once our precious Rural outlook is lost we II NEVER get it back
IT S AGRICULTURE THAT S PRESERVING THE GREENNESS - WE DON T WANT IT TO BECOME GLASS, GALVANISED STEEL, ELECTRICAL CABLING & CONCRETE!



From: [REDACTED]
To: [Do-Not-Reply IPCN Submissions Mailbox](#); [IPCN Enquiries Mailbox](#)
Subject: Birriwa Solar IPCN Submission
Date: Friday, 14 June 2024 4:46:17 PM

Dear IPCN,
Photo References from Lynette LaBlack

Environmentally Destructive Solar Construction - Denuding the Landscape & Destroying Essential Ecological Habitat for Precious Threatened Species including Squirrel Gliders & Superb Parrots etc. - with Developers & Approving Bodies claiming that cut out sections of hollow log such as this have been suitably placed in the landscape!



Overgrown, Industrialised Solar's Toxic Fire Risks are a Public Health & Safety Risk+Public Liability Nightmare!

Note Useless Hollow Log 'Habitat' - Disingenuously Left Lying on the Ground for Squirrel Gliders & Superb Parrots - all Covered in Weeds!



Sent from my iPhone

From: [REDACTED]
To: [Do-Not-Reply IPCN Submissions Mailbox](#); [IPCN Enquiries Mailbox](#)
Subject: Birriwa Solar IPCN Reference
Date: Friday, 14 June 2024 4:48:08 PM

Ecocidal, Industrialised Solar Electricity Generating Works Denude the Landscape -
Devastating Ecological Habitat & Precious Vulnerable/ Endangered Species.



Sent from my iPhone

From: [REDACTED]
Subject: [REDACTED]
Date: 14 June 2024 4:55:54 PM

Birriwa's Uncontaminated Productive Ag Land



Sent from my iPhone

From: [REDACTED]
To: [Burrumbidgee PCN Submissions Mailbox](#)
Subject: Birriwa Solar PCN Reference
Date: Friday, 14 June 2024 4:56:42 PM

Birriwa's Uncontaminated Productive Ag Land & Healthy Water Sources



Sent from my iPhone

From: [REDACTED]
Subject: [Do-Not-Reply IPCN Submissions Mailbox](#)
Date: Birriwa Solar
Friday, 14 June 2024 5:00:19 PM

Public Health & Safety Risks from Electrification - including Childhood Leukaemia



Sent from my iPhone

From: [REDACTED]
To: [Do-Not-Reply IPCN Submissions Mailbox](#)
Subject: Birriwa Solar
Date: Friday, 14 June 2024 5:00:20 PM

Numerous Heavy Metals including Lead - Leach from Solar Panels - Dead Cow from Lead Poisoning



Sent from my iPhone

From: [REDACTED]
Subject: Birriwa Solar
Date: Friday, 14 June 2024 5:01:42 PM
[Do-Not-Reply IPCN Submissions Mailbox](#)

Road Hazards - Irresponsible Solar Companies Use Dodgy Transport Companies with Inexperienced Visy Drivers





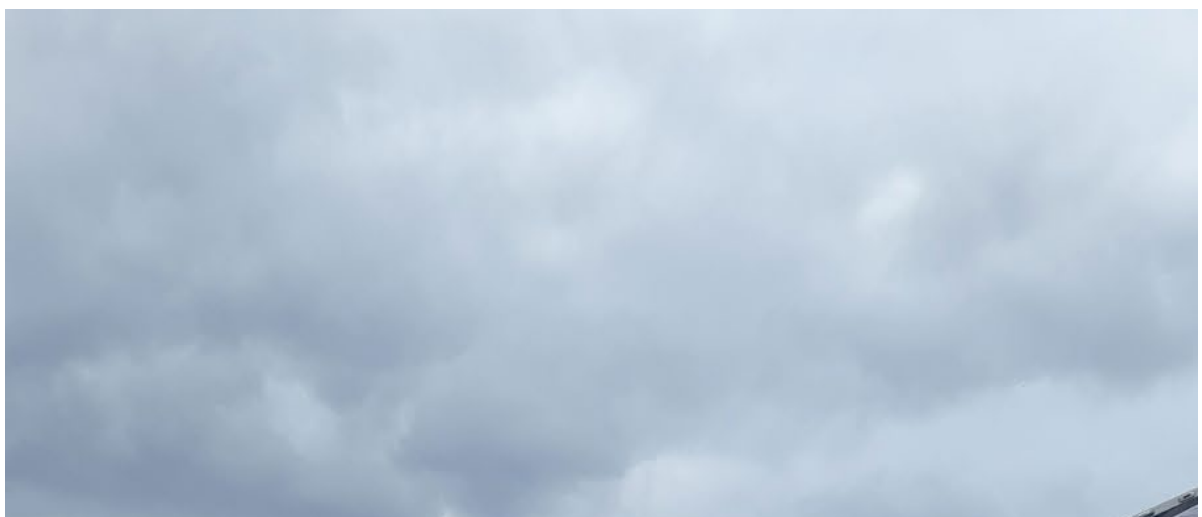


Sent from my iPhone

From: [REDACTED]
To: [Do-Not-Reply IPCN Submissions Mailbox](#)
Subject: Birriwa Solar
Date: Friday, 14 June 2024 5:01:56 PM

Transportation & Contamination Disaster













Sent from my iPhone

From: [REDACTED]
To: [REDACTED]
Subject: [REDACTED]
Date: 14 June 2024 5:04:52 AM

Solar Transportation Disaster & Slave Labour Linked JA Solar Panels









Sent from my iPhone

From: [REDACTED]
Subject: [Re: \[REDACTED\] IPON Submissions: Ma Boar: IPON Enquiries Mailbox](#)
Birtwa 56 ar IPON Reference
Date: Friday, 14 June 2024 5:05:20 PM

Industrialised Solar = Cruelly Tortured Uyghurs



Sent from my iPhone

From: [REDACTED]
To: [REDACTED]
Subject: [REDACTED]
Date: 14 June 2024 5:05:29 PM
Attachments: [REDACTED]

Industrialised Solar - Cruelly Tortured Uyghurs
ACEN used Jinko Solar Panels for Construction of New England Solar -Uralla

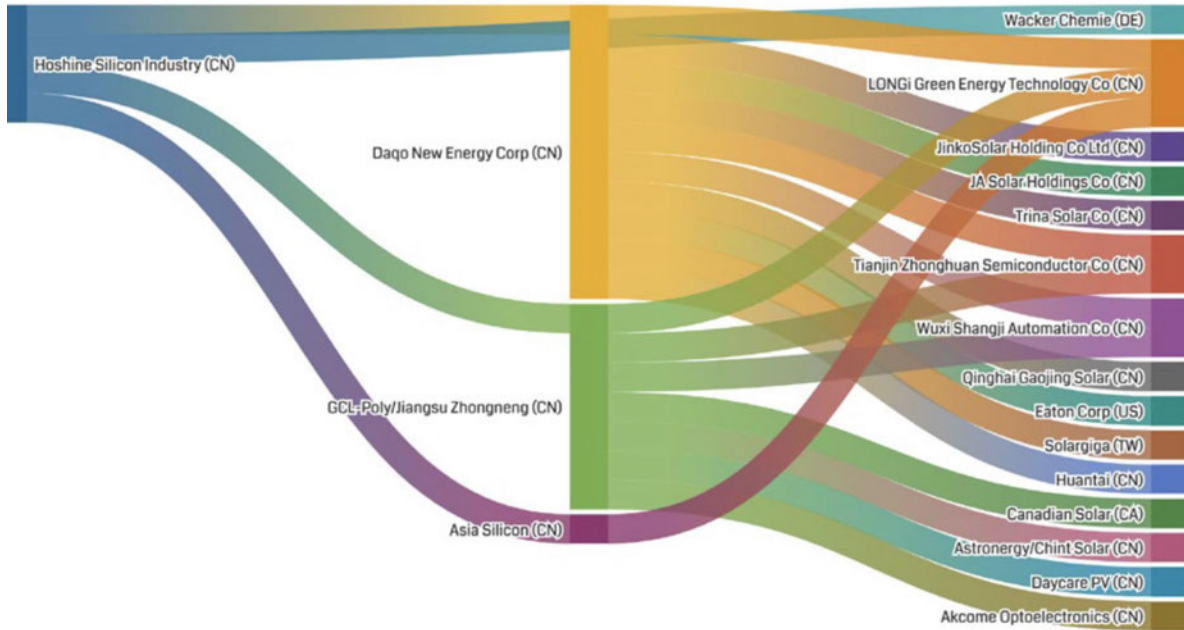


Diagram 1 - Hoshine Silicon Industry's Downstream Customers

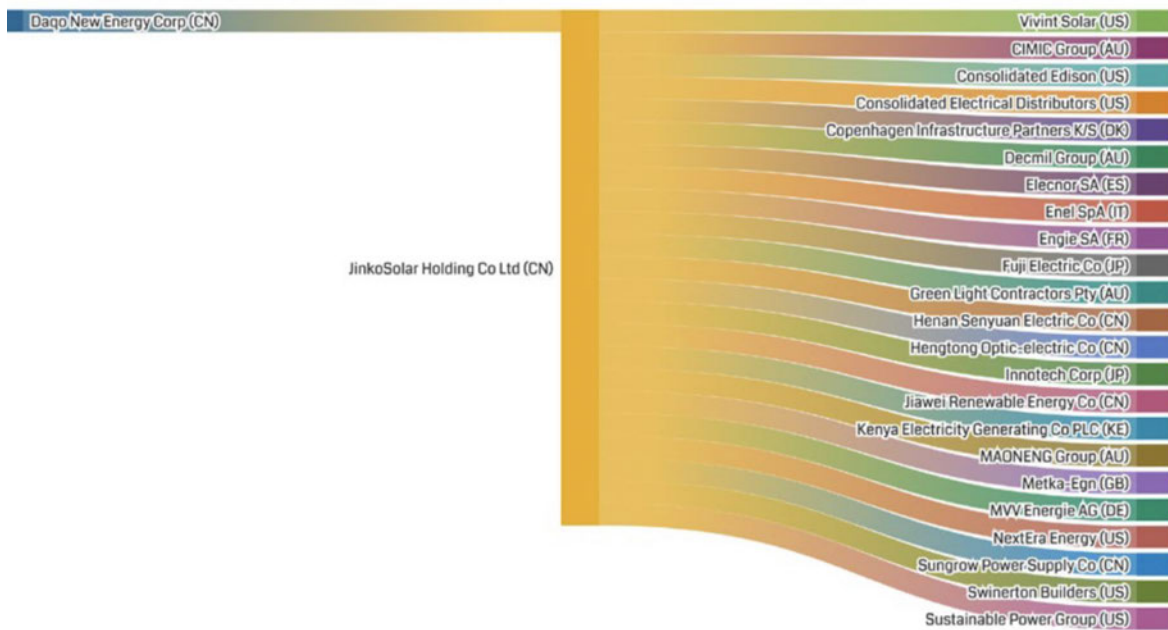


Diagram 2 - Daqo New Energy > JinkoSolar Downstream Customers

<https://www.shu.ac.uk/-/media/home/research/helena-kennedy-centre/projects/pdfs/evidence-base/in-broad-daylight.pdf>

From: [REDACTED]
Subject: [Birriwa Solar IPCN Submission Mailbox](#) [IPCN Enquiries Mailbox](#)
Birriwa Solar Electricity Generating Works BESS - SSD-29508870 IPCN Objection Submission on Photo References
Date: Monday, 17 June 2024 10:29:16 AM

Dear IPCN,

I've managed to put these photos into one email that I'd sent to you on the 3rd June 2024 & again partially by 5 p.m in a separated fashion on Friday 14th, so I hope this makes these photo references easier for you to include with my Birriwa Solar Electricity Generating Works + BESS - SSD-29508870 Objection Submission References.

Thank you.

Lynette LaBlack
[REDACTED]



Once our precious Rural outlook is lost we'll NEVER get it back
IT'S AGRICULTURE THAT'S PRESERVING THE GREENNESS - WE DON'T WANT IT TO BECOME GLASS, GALVANISED STEEL, ELECTRICAL CABLING & CONCRETE!



Environmentally Destructive Solar Construction - Denuding the Landscape & Destroying Essential Ecological Habitat for Precious Threatened Species including Squirrel Gliders & Superb Parrots etc. - with Developers & Approving Bodies claiming that cut out sections of hollow log such as this have been suitably placed in the landscape!



Overgrown, Industrialised Solar's Toxic Fire Risks are a Public Health & Safety Risk + Public Liability Nightmare!

Note Useless Hollow Log 'Habitat' - Disingenuously Left Lying on the Ground for Squirrel Gliders & Superb Parrots - all Covered in Weeds!



Ecocidal, Industrialised Solar Electricity Generating Works Denude the Landscape - Devastating Ecological Habitat & Precious Vulnerable/ Endangered Species.

From: [REDACTED]
To: [REDACTED]
Subject: [REDACTED]
Date: Monday, 17 June 2024 10:57:26 AM
Attachments: [REDACTED]

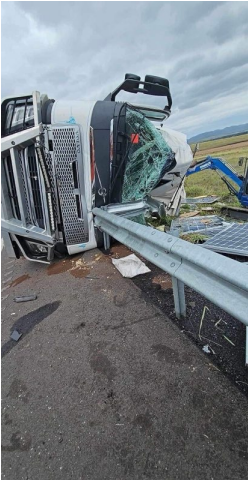
Dear IPCN,
Due to the number of photos & limited resources, I am now having to send the series of photos in several emails instead of just one as I had hoped.
They are a repeat of the photos for Birriwa Solar already sent to you on the 3rd June 2024 & again partially by 5 p.m in a separated fashion on Friday 14th, so I hope this makes these photo references easier for you to include with my Birriwa Solar Electricity Generating Works BESS - SSD-29508870 Objection Submission References.

Thank you.

[REDACTED]



Road Hazards - Irresponsible Solar Companies Use Dodgy Transport Companies with Inexperienced Vasy Drivers (7 photos)



Transportation & Contamination Disaster









Solar Transportation Disaster & Slave Labour Linked JA Solar Panels



Industrialised Solar Cruelly Tortured Uyghur Slave Labour Supply Chains

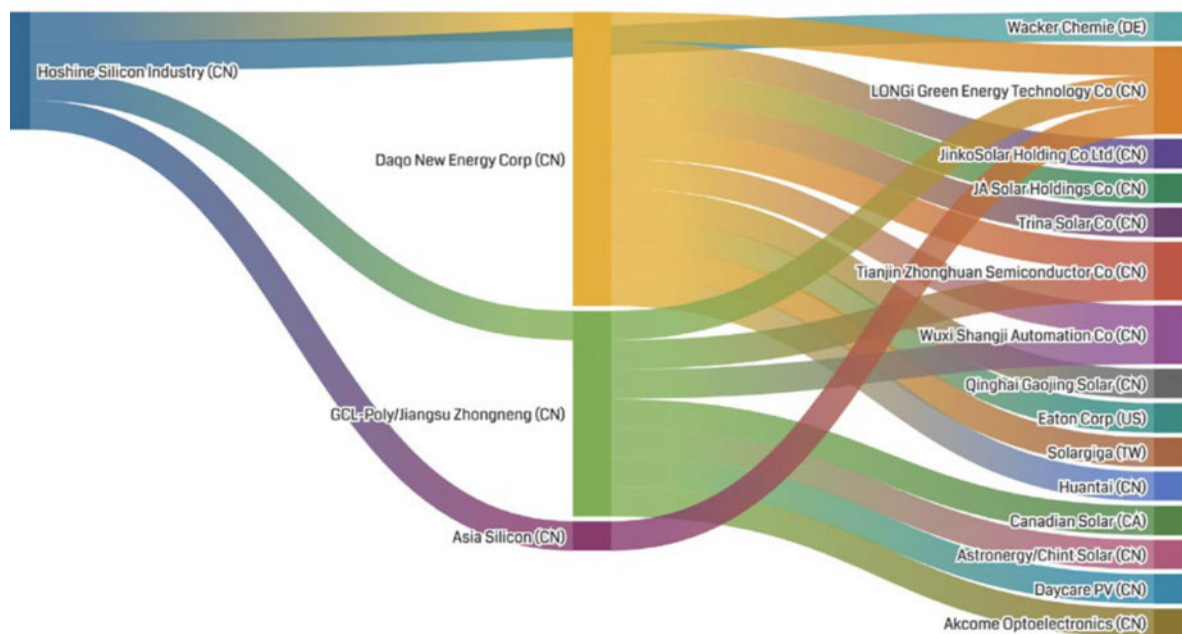


Diagram 1 - Hoshine Silicon Industry's Downstream Customers

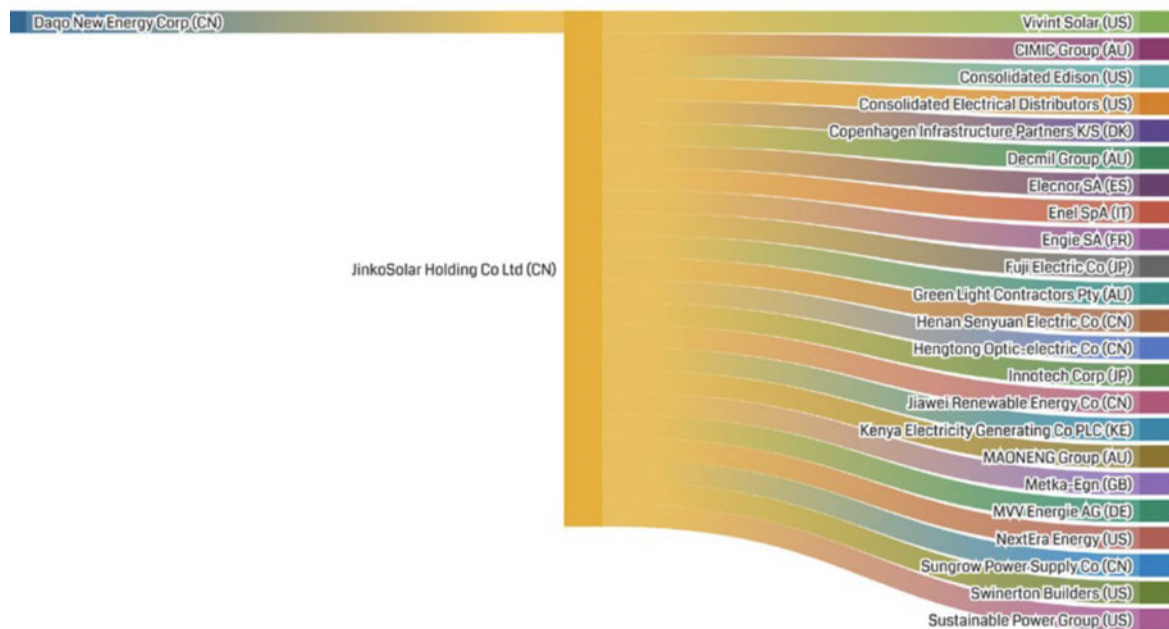


Diagram 2 - Daqo New Energy > JinkoSolar Downstream Customers

<https://www.shu.ac.uk/-/media/home/research/helene-kennedy-centre/projects/pdfs/evidence-base/in-broad-daylight.pdf>

ACEN's Industrialised Solar - Cruelly Tortured Uyghur Slave Labour Supply Chains.

ACEN used Jinko Solar Panels for Construction of New England Solar - Uralla & are presently Constructing Stubbo Solar - Gulgong with JA Solar Panels.

NSW Local Council Act 1993

428 Annual Report

**438 ZE Duty to Ensure
Goods & Services Are
Not Procured From
Modern Slavery.**

From: [REDACTED]
To: [Do-Not-Reply IPCN Submissions Mailbox](#); [IPCN Enquiries Mailbox](#)
Subject: Birriwa Solar Electricity Generating Works + BESS - SSD-29508870 IPCN Objection Submission Photo References continued.
Date: Monday, 17 June 2024 10:40:50 AM
Attachments: [unknown.heic](#)
[unknown_1.heic](#)
[unknown_2.heic](#)
[unknown_3.heic](#)
[unknown_4.heic](#)

Dear IPCN,

Due to the number of photos & limited resources, I am now having to send the series of photos in several emails instead of just one as I had hoped.

They are a repeat of the photos for Birriwa Solar already sent to you on the 3rd June 2024 & again partially by 5 p.m in a separated fashion on Friday 14th, so I hope this makes these photo references easier for you to include with my Birriwa Solar Electricity Generating Works + BESS - SSD-**29508870** Objection Submission References.

Thank you.

Lynette LaBlack

[REDACTED]

Ag/Solar Conflict of Interest

Ag/Solar Conflict of Interest

Ag/Solar Conflict of Interest

Birriwa's Uncontaminated Productive Ag Land

Birriwa's Uncontaminated Productive Ag Land & Healthy Water Sources

'If Clouds Could Talk -

The Finger of God in

Righteous Anger.'

INDUSTRIALISED SOLAR

DOES NOT BELONG IN

OUR FOOD BOWL!

(Bomen Wagga Wagga)















From: [REDACTED]
To: [Do-Not-Reply IPCN Submissions Mailbox](#); [IPCN Enquiries Mailbox](#)
Subject: Birriwa Solar Electricity Generating Works + BESS - SSD-29508870 IPCN Objection Submission Photo References continued.
Date: Monday, 17 June 2024 10:48:22 AM
Attachments: [unknown.heic](#)
[unknown_1.heic](#)
[unknown_2.heic](#)
[unknown_3.heic](#)
[unknown_4.heic](#)
[unknown_5.heic](#)
[3d37d6b2-be6f-4384-9e62-bacd533f102f.png](#)

Dear IPCN,

Due to the number of photos & limited resources, I am now having to send the series of photos in several emails instead of just one as I had hoped.

They are a repeat of the photos for Birriwa Solar already sent to you on the 3rd June 2024 & again partially by 5 p.m in a separated fashion on Friday 14th, so I hope this makes these photo references easier for you to include with my Birriwa Solar Electricity Generating Works + BESS - SSD-29508870 Objection Submission References.

Thank you.

[REDACTED]

Solar's Environmentally Destructive Water/Sediment Run-Off & Erosion Damage - Bomen, Wagga Wagga (6 photos)

Damaged Solar PV = Toxic Contamination

Hail Fractured Solar Panels = Toxic Contamination

Numerous Heavy Metals including Lead - Leach from Solar Panels.

Dead Cow from Lead Poisoning.

Public Health & Safety Risks from Solar Electrification - including Childhood Leukaemia













