

SITE SELECTION

Biodiversity Value

The College campus is embeded in landscape and ecology – a Biodiversity report has identified areas within the campus as having a range of 'Very High', 'High', 'Moderate' to 'Low' Biodiversity Values.

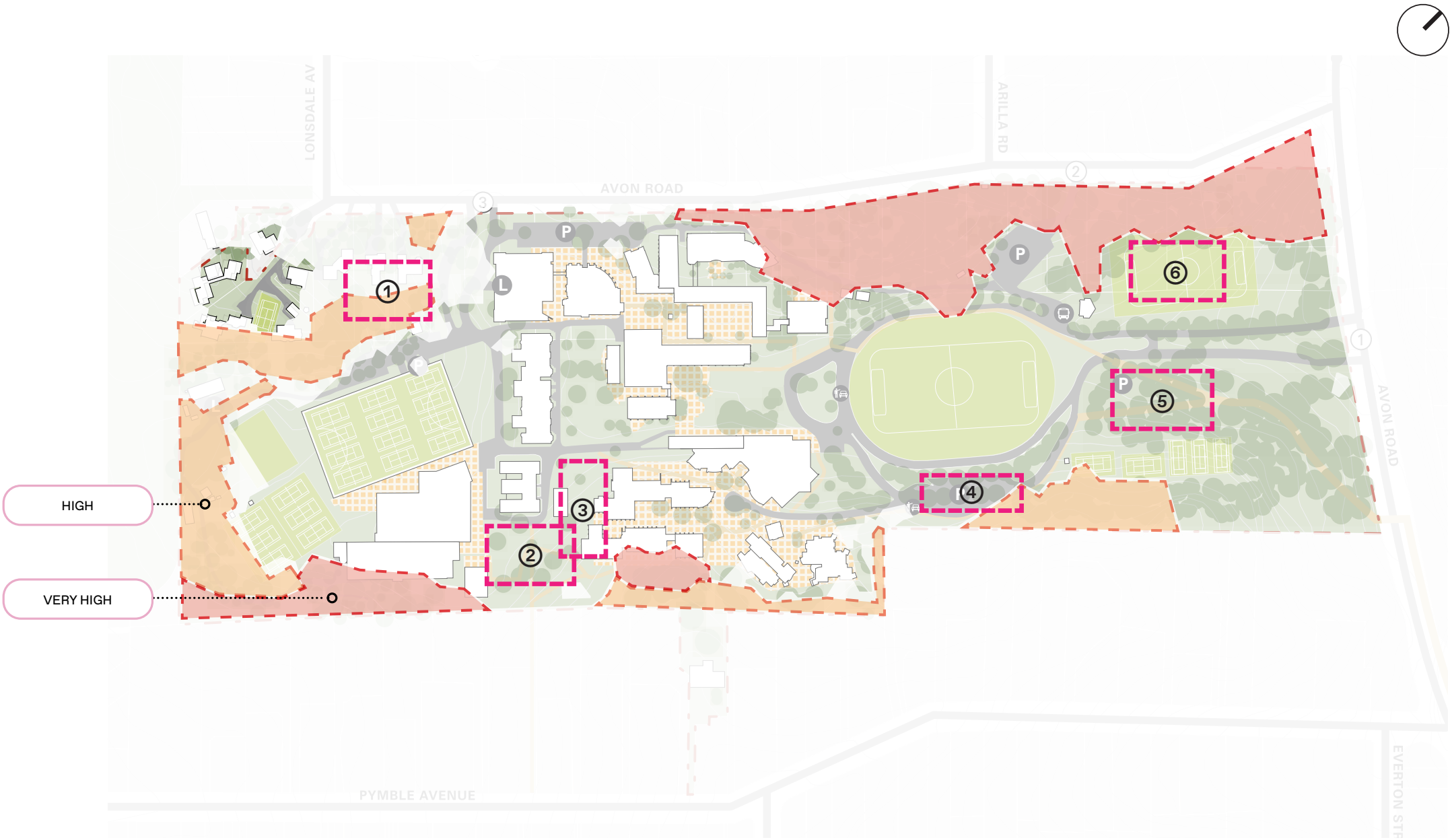
The diagram on the right highlights the 'Very High' and 'High' areas only.

The Masterplan process identified sites which minimise the impact to the existing Biodiversity on the campus – there have been six locations identified for the project as part of the site selection.

Biodiversity Value

Very High (1)

High (2)



SITE SELECTION

Teaching & Learning

Walking Distances

The Teaching Precinct of the College campus is centred around the Chapel at the College Heart.

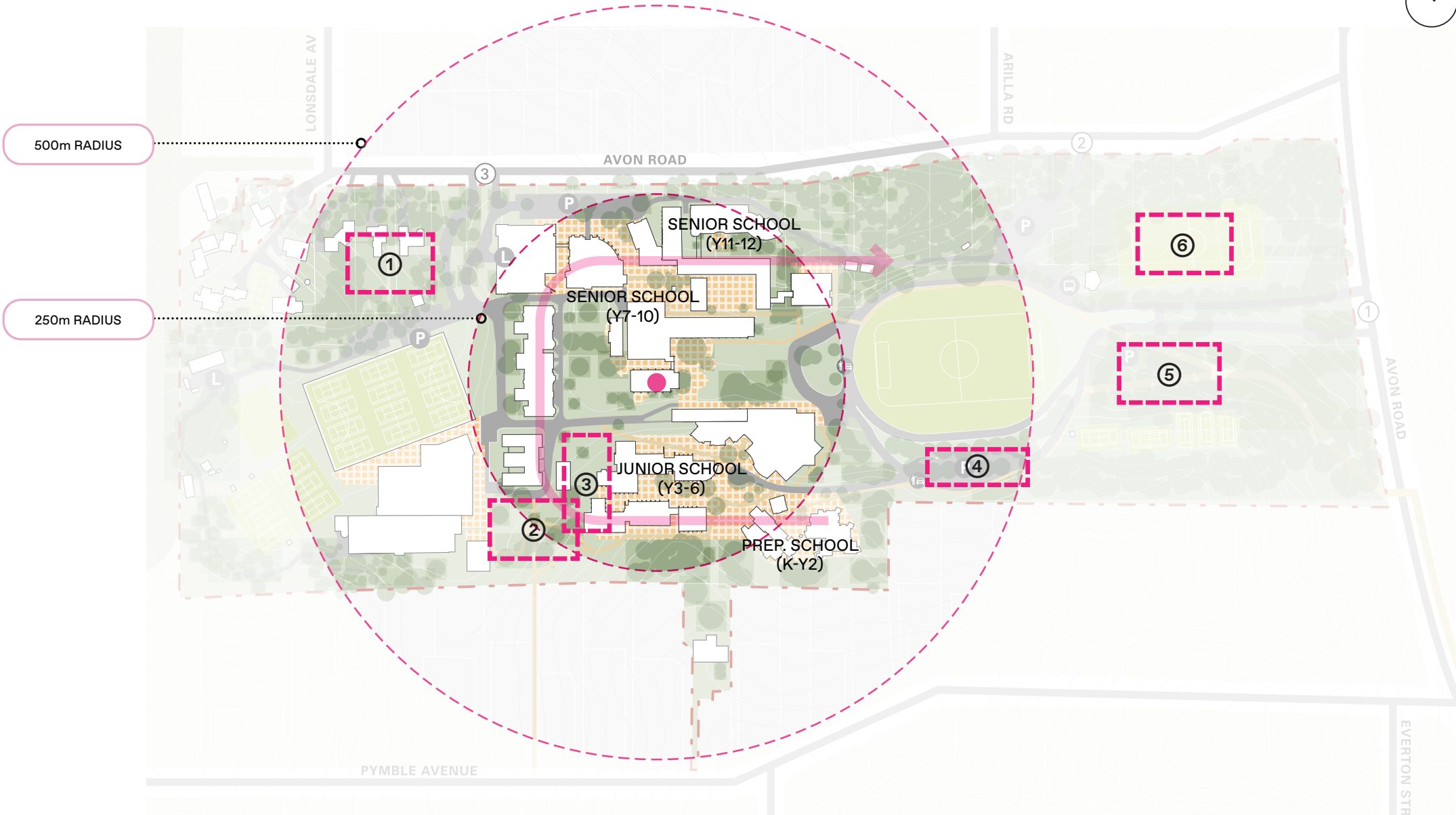
The Masterplan identifies an approximate 250m radius around this to minimise travel distances between learning spaces for students and staff – this is both a functional requirement to limit disruption class times, as well as safety for the school community.

Due to the buildings and site's topography, the 250m radius, end-to-end, is approximately a 5 minute walk. The 500m radius is approximately a 10 minute walk.

Co-Location of Year Groups

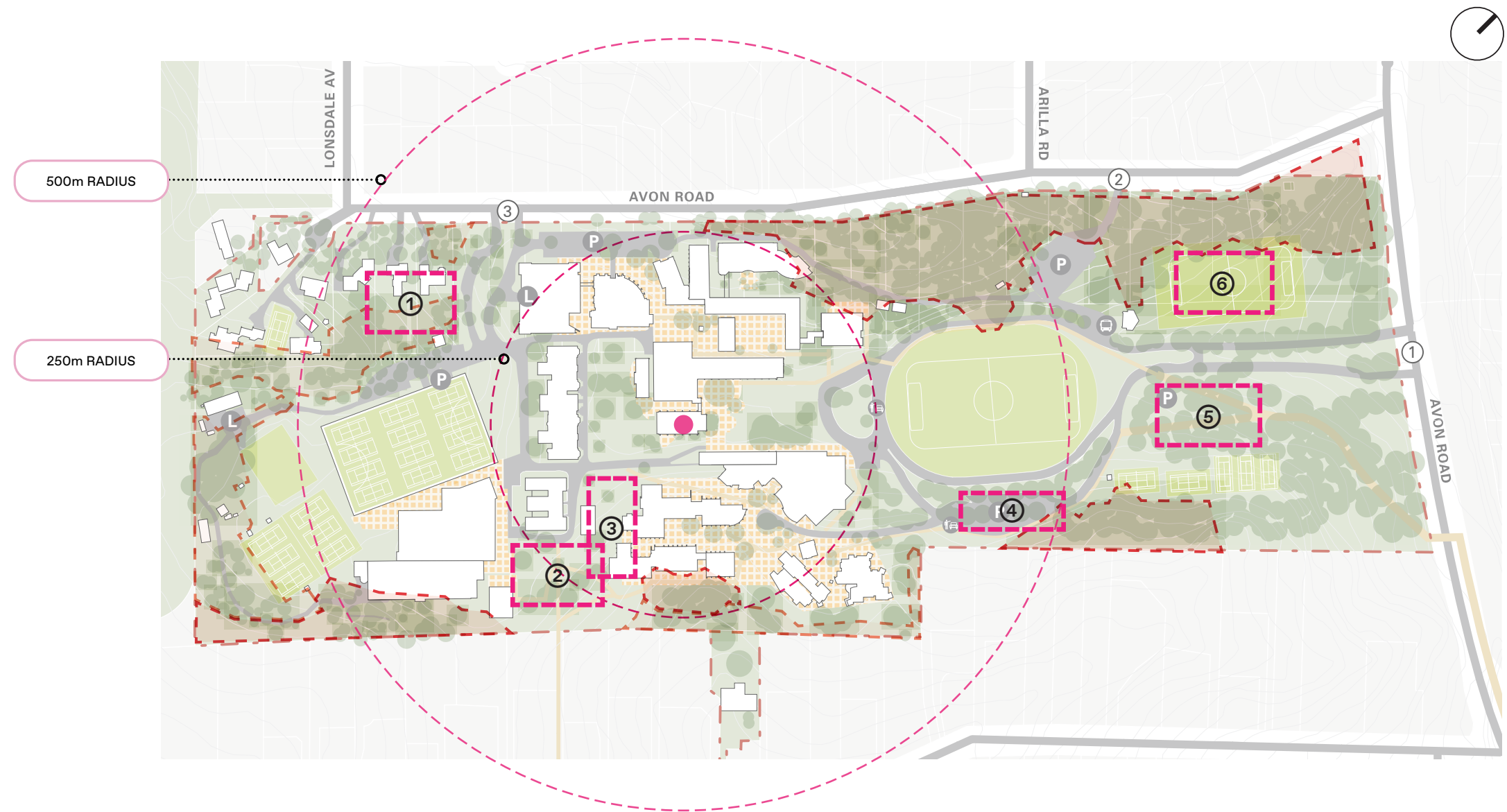
The journey through the College is planned around a horse-shoe progression from the Preparatory School (K-Yr 2), Junior School (Yr 3-6) and the Senior School (Yr 7-12).

This is so teaching spaces and facilities, as well as playground spaces can be shared and are designed appropriately with each year group.



SITE SELECTION

Options Summary



OPTION 1

- PRO**
- Location good for pick-up and drop-off for ELC visitors
- CON**
- Located within 'High' Biodiversity Value area
 - Located outside of the Teaching Precinct and Junior School cohort away from other Junior School students
 - Will require relocation of Staff Accommodation

OPTION 2 (Preferred)

- PRO**
- Minimal impact to Biodiversity Value areas
 - Consistent with Masterplan progression of students across campus
 - Located within Teaching Precinct and Junior School students are co-located
- CON**
- ELC is well within campus
 - Close proximity to neighbour boundary

OPTION 3

- PRO**
- Minimal impact to Biodiversity Value areas
 - Consistent with Masterplan progression of students across campus
 - Located within Teaching Precinct and Junior School students are co-located
- CON**
- ELC is well within campus
 - Building have greater impact to historic buildings on site and its curtilage
 - Require demolition of existing teaching and learning spaces and steep topography result in complexity with buildability

OPTION 4

- PRO**
- Isolated construction from operational areas of College
- CON**
- Current pick-up and drop-off traffic and car parking is compromised
 - Close proximity to neighbour boundary
 - Impact to 'High' Biodiversity Value areas
 - Located outside Teaching Precinct
 - Inconsistent with Masterplan progression of students across campus

OPTION 5

- PRO**
- Isolated construction from operational areas of College
- CON**
- Located outside Teaching Precinct – too far away
 - Minor impacts to pick-up and drop-off traffic and car parking
 - Impact to College's tree canopy cover – removal of significant amount of trees
 - Inconsistent with Masterplan progression of students across campus

OPTION 6

- PRO**
- Isolated construction from operational areas of College
- CON**
- Located outside Teaching Precinct – too far away
 - Require removal of one of College's open space / sportsfield
 - Inconsistent with Masterplan progression of students across campus