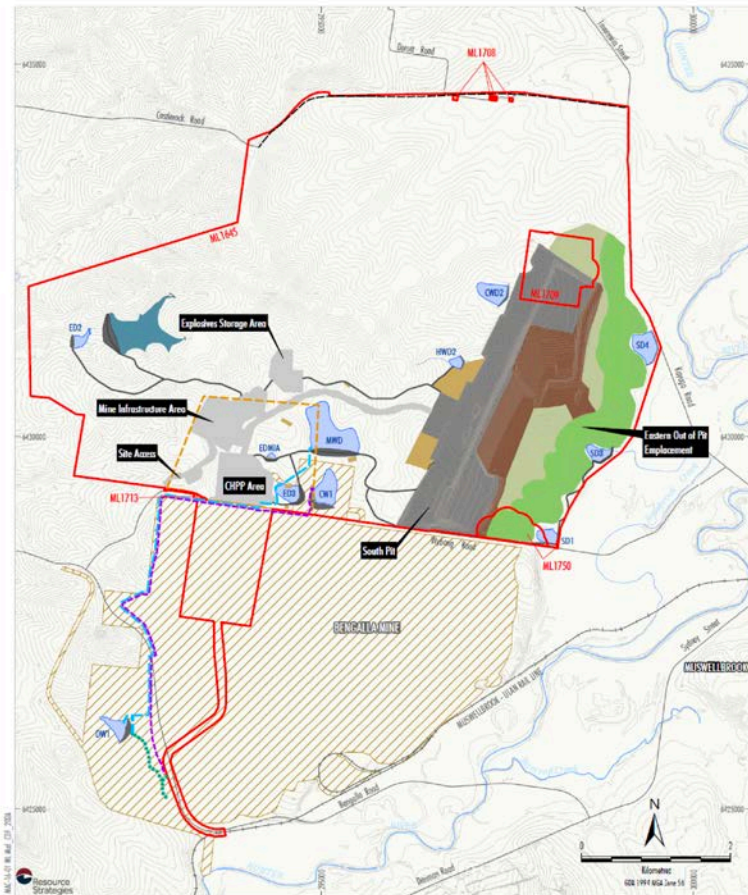


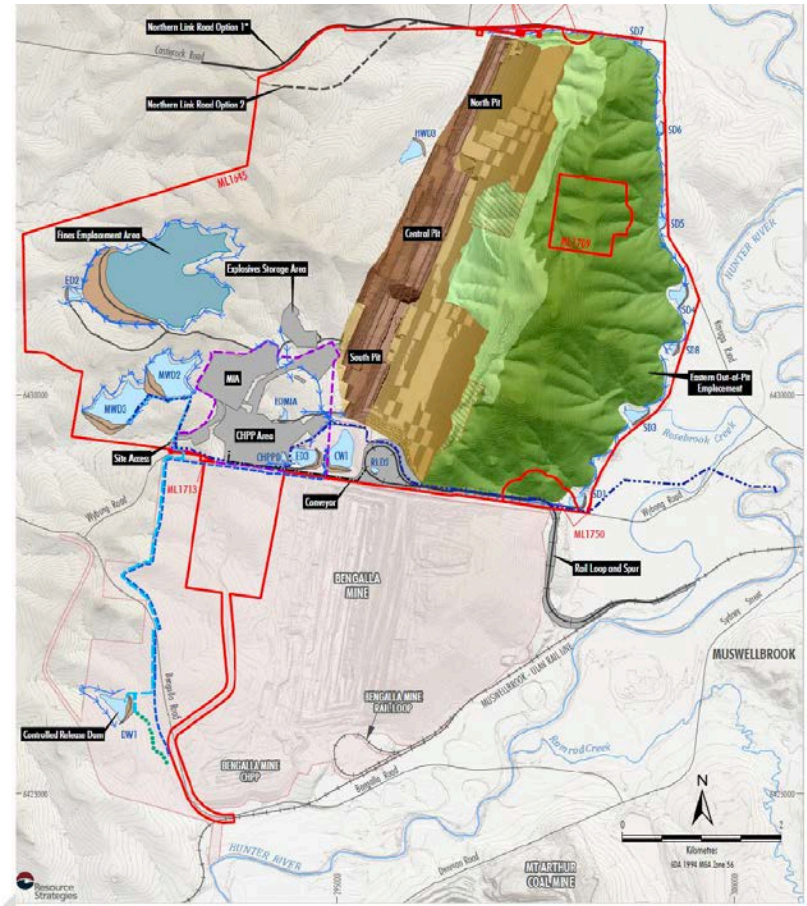
MT PLEASANT - PROJECT LAYOUT PLANS

2018 (Mod 3) – CONDITIONS OF CONSENT

FIGURE 2 - CONCEPTUAL PROJECT LAYOUT PLAN AT 2025



2022 RECOMMENDED CONDITIONS OF CONSENT – FIG. 7 - 2047



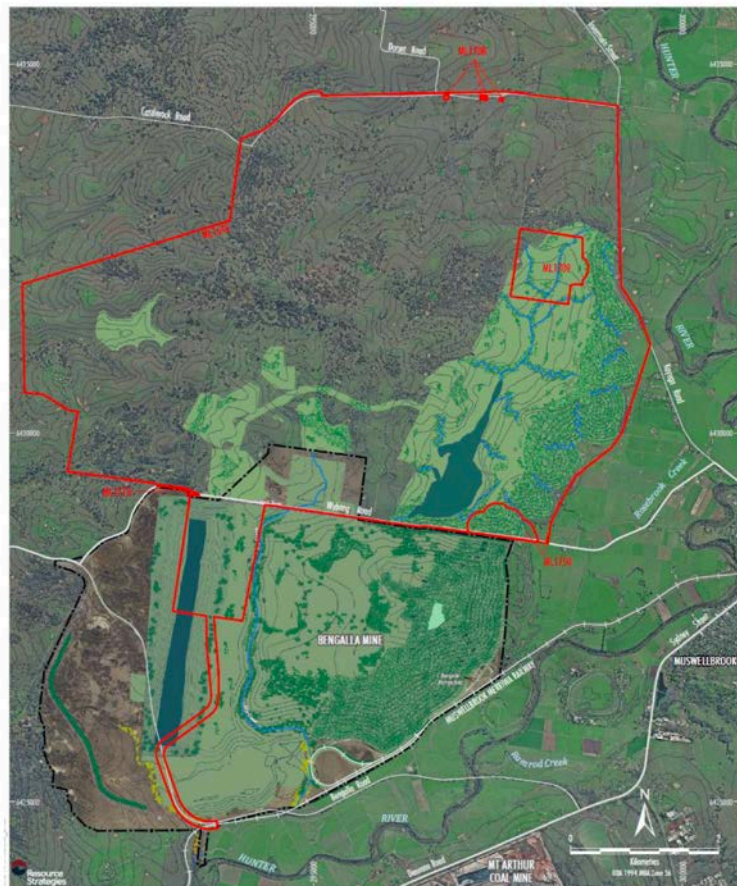
MACHEnergy
MOUNT PLEASANT OPTIMISATION PROJECT
Provisional General Arrangement
2047

Figure 3-10

MT PLEASANT LANDFORMS

2018 (Mod3 Consent) (Appendix 2 Figure 4)

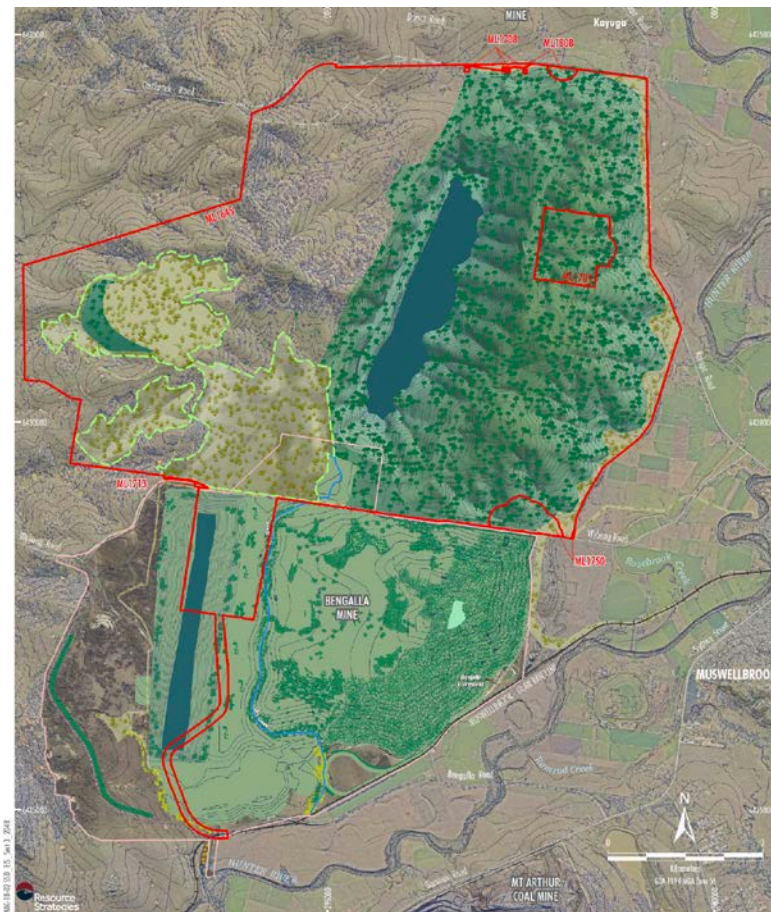
FIGURE 4 - CONCEPTUAL FINAL LANDFORM



Source: NSW Land & Property Information (2017), NSW Division of Resources & Energy (2017), Department of Planning and Environment (2016), MACH Energy (2017).
Orthophoto: MACH Energy (Aug 2016)

MACHEnergy
MOUNT PLEASANT OPERATION
Conceptual Final Landform
(2026)

Mt PO EIS Conceptual Final Landform Figure 3.18



Source: MACH (2017), Bengalla Mine (2016), NSW Spatial Services (2017), Department of Planning and Environment (2016).
Orthophoto: MACH (2017)

* Digitized from Appendix 9 of Development Consent (SSD-51770) and overlaid on the Mount Pleasant Operation (MPO) area.

Note: Light vehicle access roads and pipeline diversions associated with maintaining the catchment of the final void and lines replacement area are not shown.

MACHEnergy
MOUNT PLEASANT OPTIMISATION PROJECT
Conceptual Final Land Use Areas