

MACHEnergy

Mount Pleasant Operation

A JOINT VENTURE WITH
JCDA

Japan Coal Development Australia

Mount Pleasant Optimisation Project

IPC Public Hearing

7 July 2022



MACH Energy Representative

Chris Lauritzen
General Manager –
Resource Development

- 35+ years experience in the International coal industry in technical and general management roles
- Previously worked for 22 years with Rio Tinto, 7 years at Kaltim Prima Coal Indonesia, Global Coal Commodity Specialist with BHP Billiton
- Bachelor of Science (Geology), Fellow of AusIMM, GAICD.



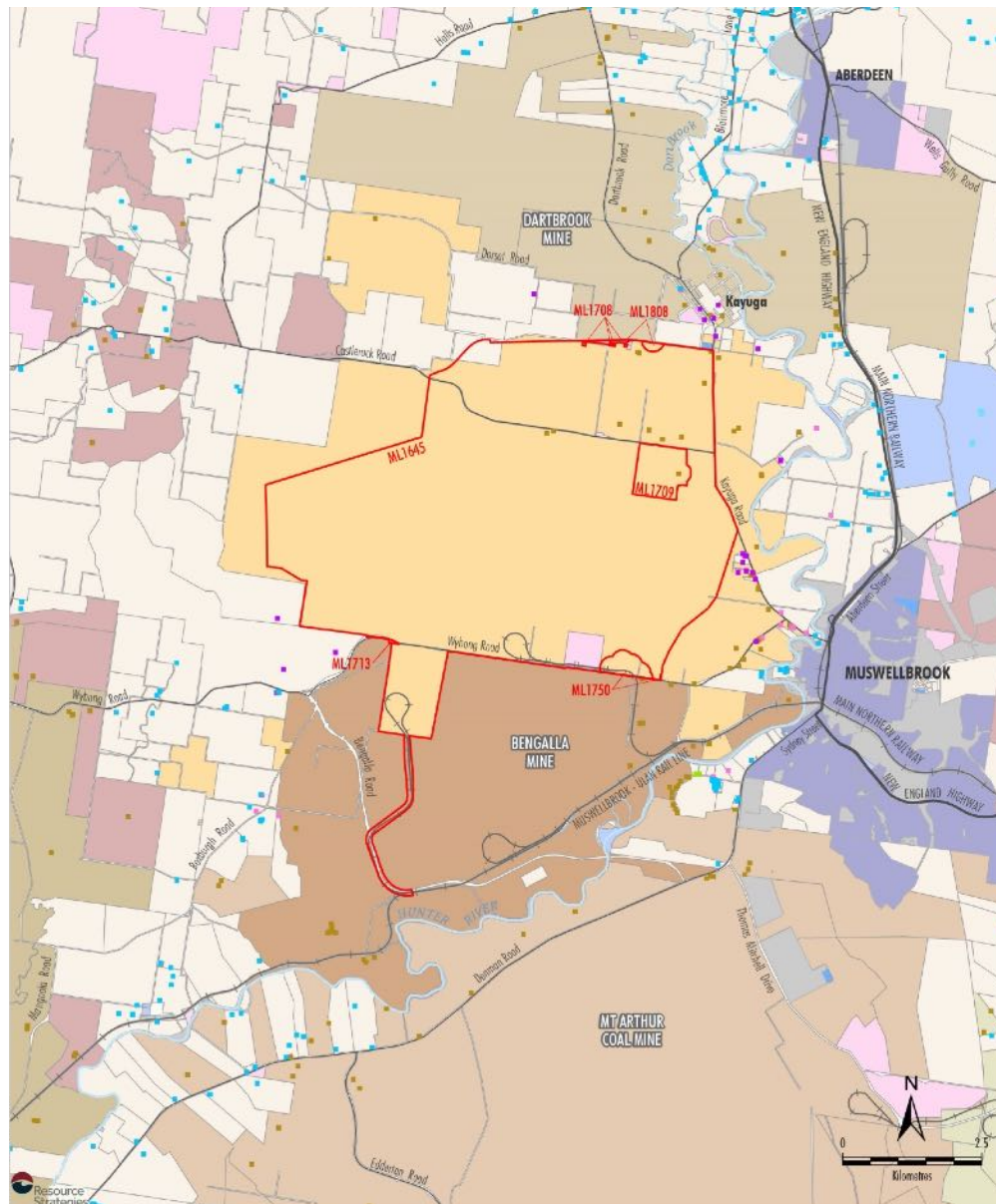
Project Location



- Recognised mining precinct
- Dartbrook to immediate north
- Bengalla to immediate south
- Mt Arthur and Maxwell Underground further south
- Muswellbrook coal to the east
- Mangoola to the west



Land Ownership



- Extensive mine-owned land
- MACH owns additional land east and west of Project
- Parcel of private land on Northern Link Road alignment

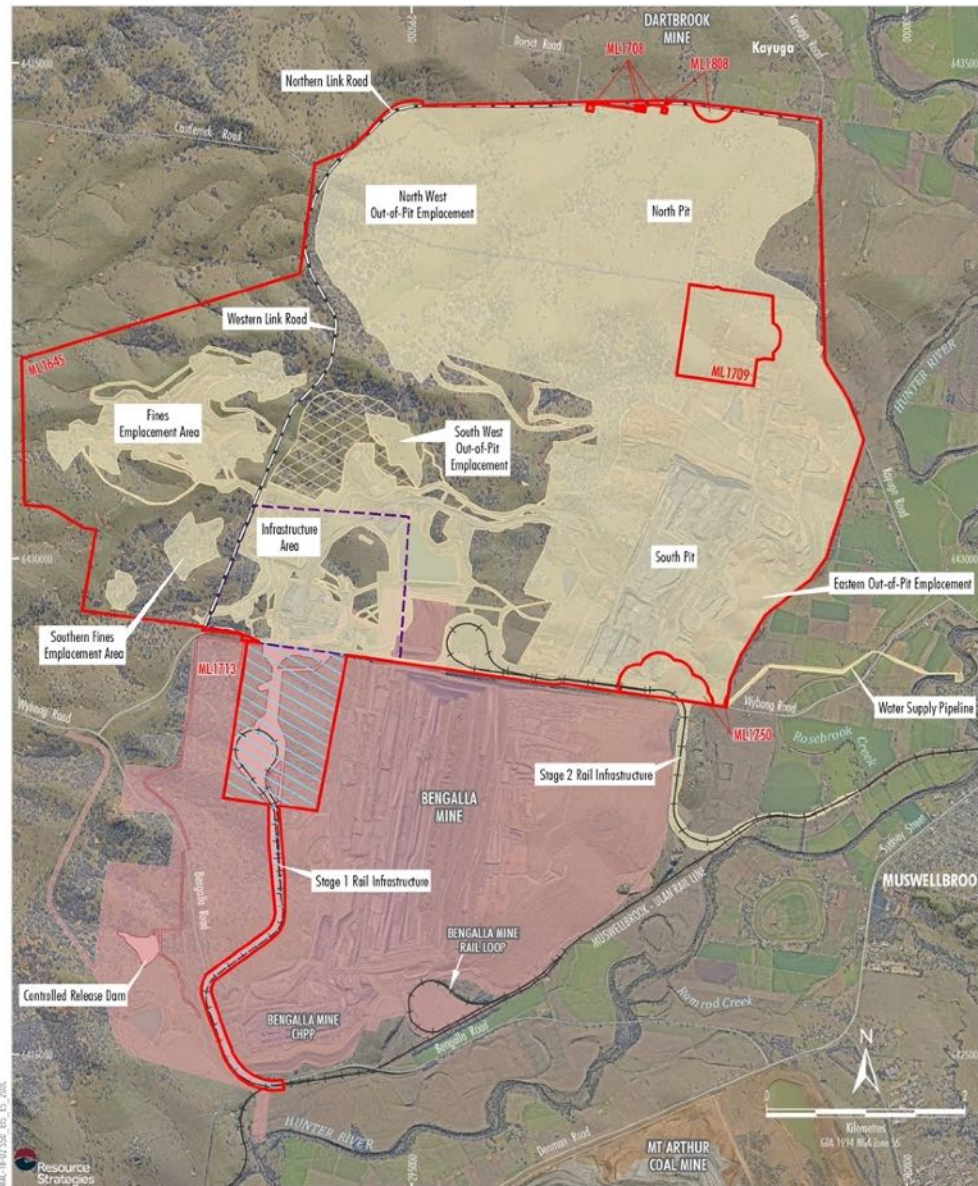


Category of Rural Residence under DA92/97

- Mine-owned
- Privately-owned - Acquisition on Request
- Privately-owned - Mitigation on Request
- Privately-owned - Mitigation/Acquisition on Request*
- Other Privately-owned

* Mitigation on Request - rail noise/Acquisition on Request - air quality. MACH is only required to acquire and/or install air quality mitigation measures at this property if not reasonably achievable under a separate approval for the Bengalla Mine.

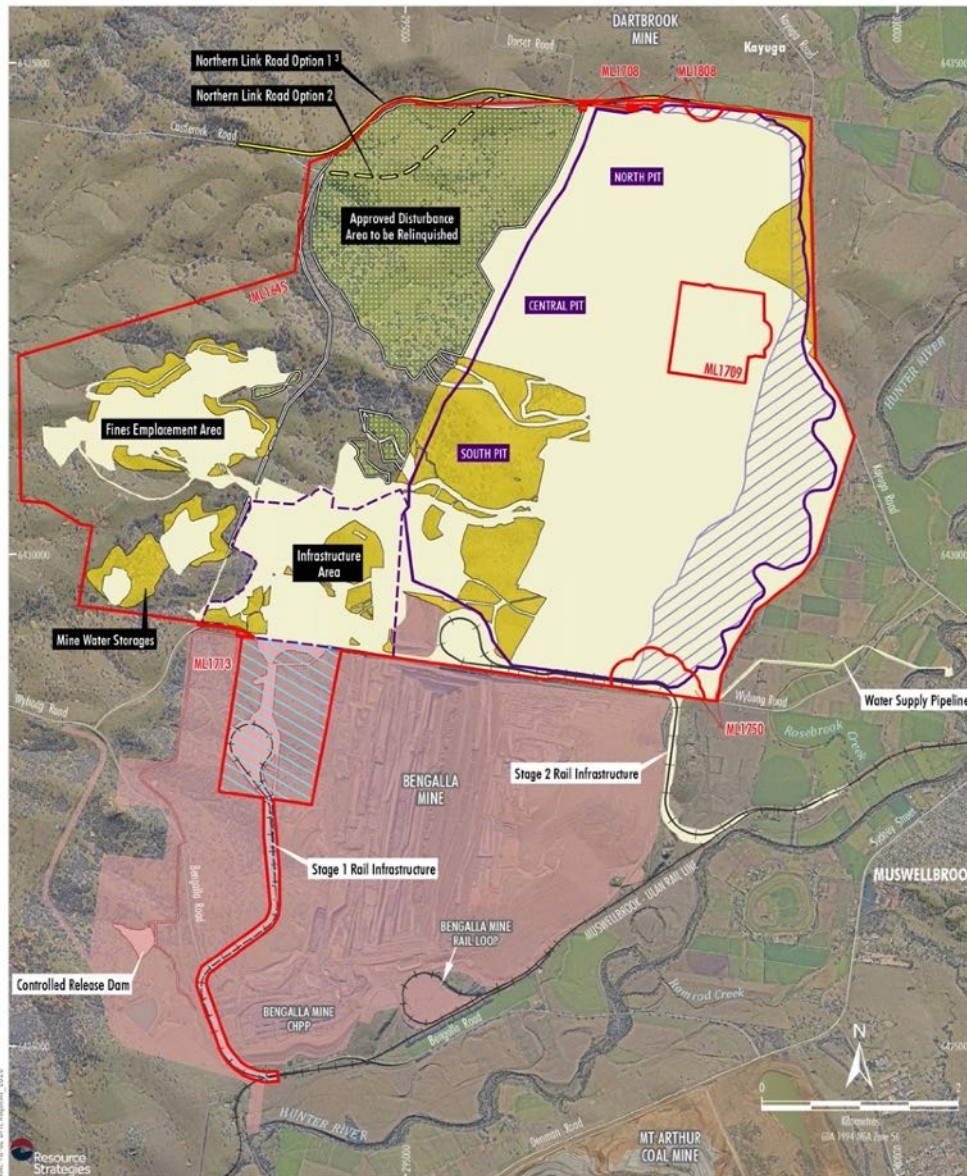
Approvals History



- Approved under EP&A Act, December 1999:
 - 10.5 Mtpa ROM coal
 - Three out-of-pit waste rock emplacements
 - Northern and Western Link Roads
 - Multiple final voids
 - Five modifications – current life to 2026
- Approved under the EPBC Act in 2012, approval extends to 2040

- LEGEND
- Mining Lease Boundary (Mount Pleasant Operation)
 - Approximate Extent of Existing/Approved Surface Development (DA92/97) ¹
 - Area Relinquished for Overburden Emplacement and Major Infrastructure
 - Infrastructure Area Envelope
 - Northern and Western Link Road
 - Infrastructure to be removed under the Terms of Condition 37, Schedule 3 (DA92/97)
 - Bengalla Mine Approved Disturbance Boundary (SSD-5170)
 - Existing/Approved Mount Pleasant Operation Infrastructure within Bengalla Mine Approved Disturbance Boundary (SSD-5170) ¹

Key Optimisation Features



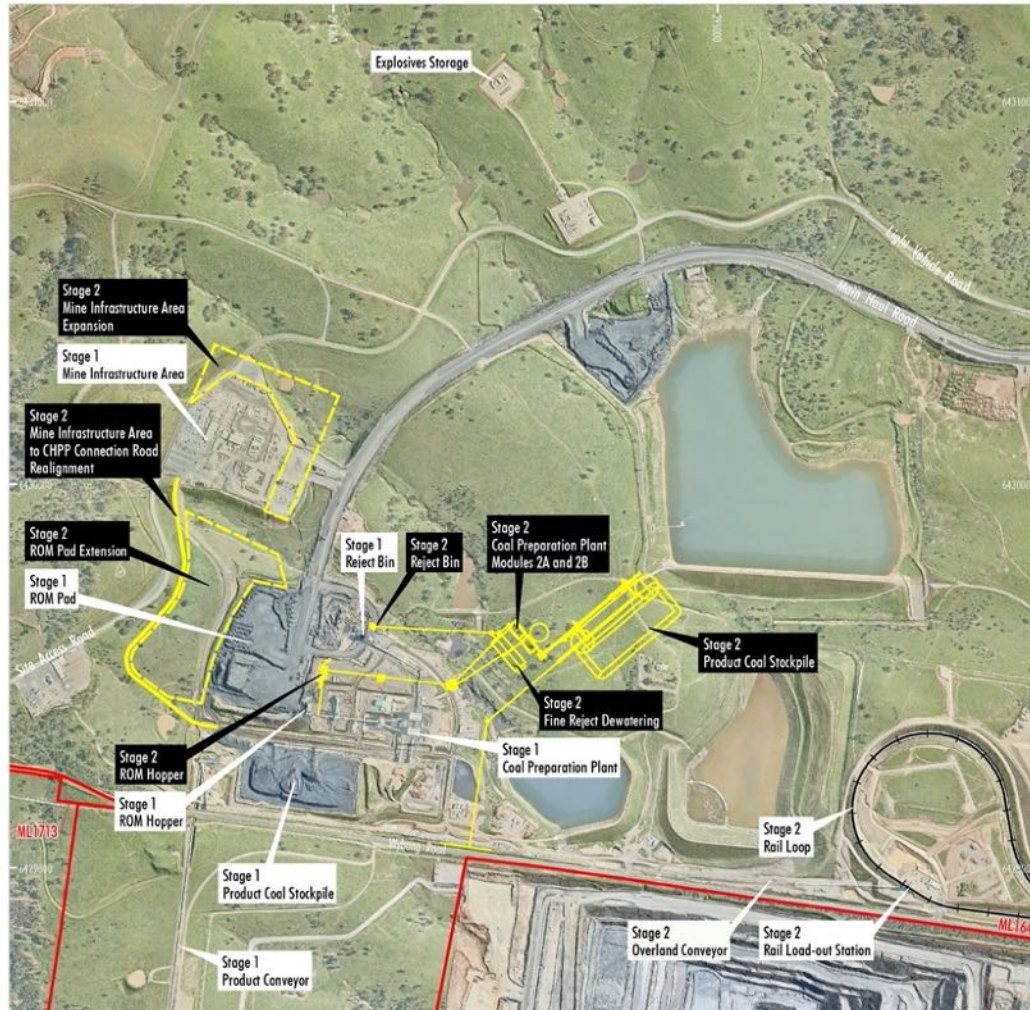
- The Relinquishment Area facilitates Project infill areas without increasing total land disturbance
- Relinquishment Area higher habitat values would result in a Project net positive regional biodiversity outcome
- The higher single integrated waste rock emplacement reduces the number of out-of-pit emplacements
- Western Link Road is not required, and Northern Link Road realigned

LEGEND

Existing Mine Elements

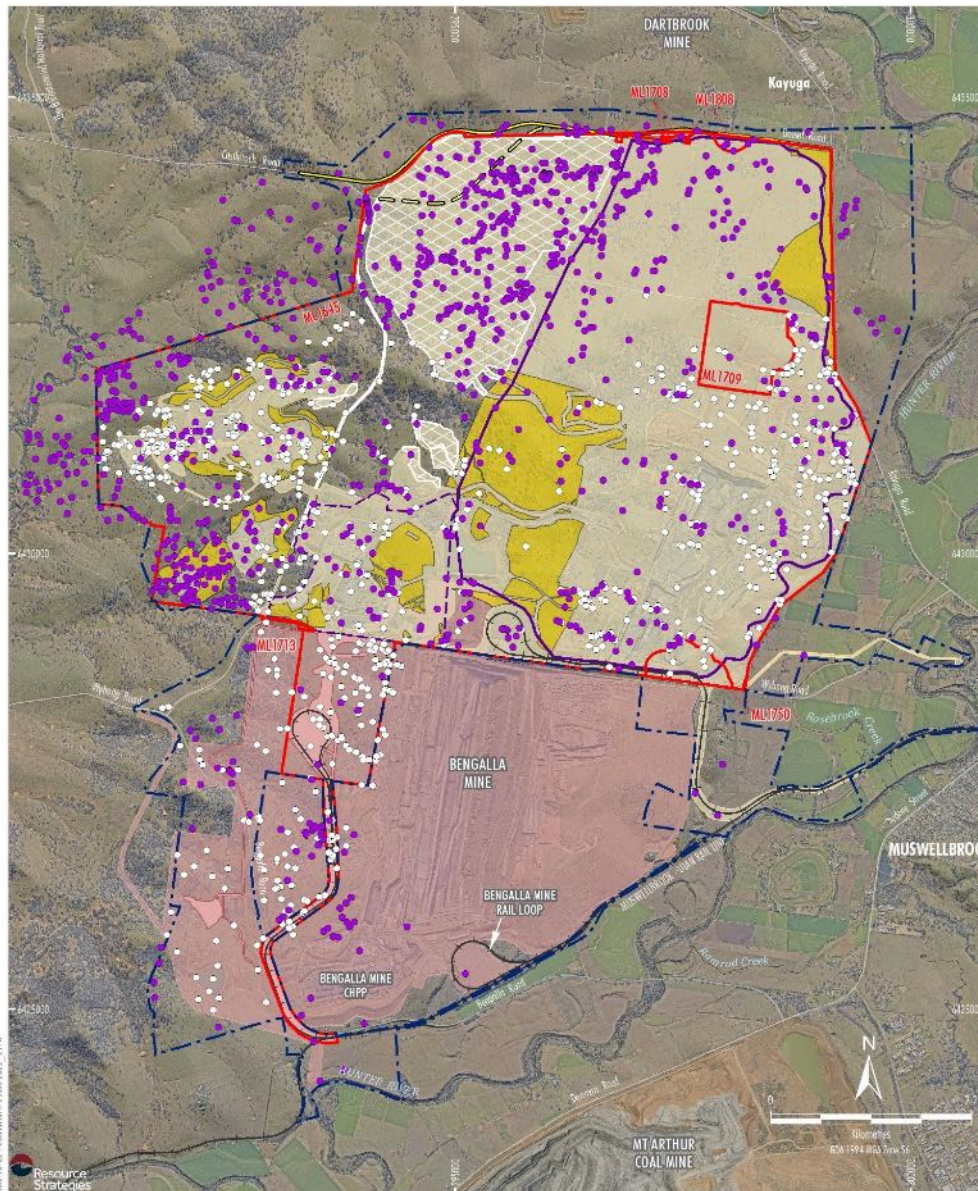
- Mining Lease Boundary (Mount Pleasant Operation)
 - Project Continuation of Existing/Approved Surface Development (DA92/97)¹
 - Infrastructure to be removed under the Terms of Condition 37, Schedule 3 (DA92/97)
 - Bengalla Mine Approved Disturbance Boundary (SSD-5170)
 - Existing/Approved Mount Pleasant Operation Infrastructure within Bengalla Mine Approved Disturbance Boundary (SSD-5170)¹
- ### Additional/Revised Project Elements
- Approved Disturbance Area to be Relinquished²
 - Approximate Additional Disturbance of Project Extensions¹
 - Northern Link Road Option 1 Centreline³
 - Northern Link Road Option 2 Centreline
 - Approximate Extent of Project Open Cut and Waste Rock Emplacement Landforms
 - Approximate Extent of Project Out-of-Pit Waste Emplacement
 - Revised Infrastructure Area Envelope

Key Optimisation Features



- Project builds on and integrates with existing Mount Pleasant Operation infrastructure
- Project maximises use of the existing fines emplacement, and new CHPP modules incorporate fine reject dewatering
- Staged nature of Project production provides managed incremental expansion
- Project life to 2048 would provide certainty for MACH, suppliers, customers, the community and workforce

Key Optimisation Features

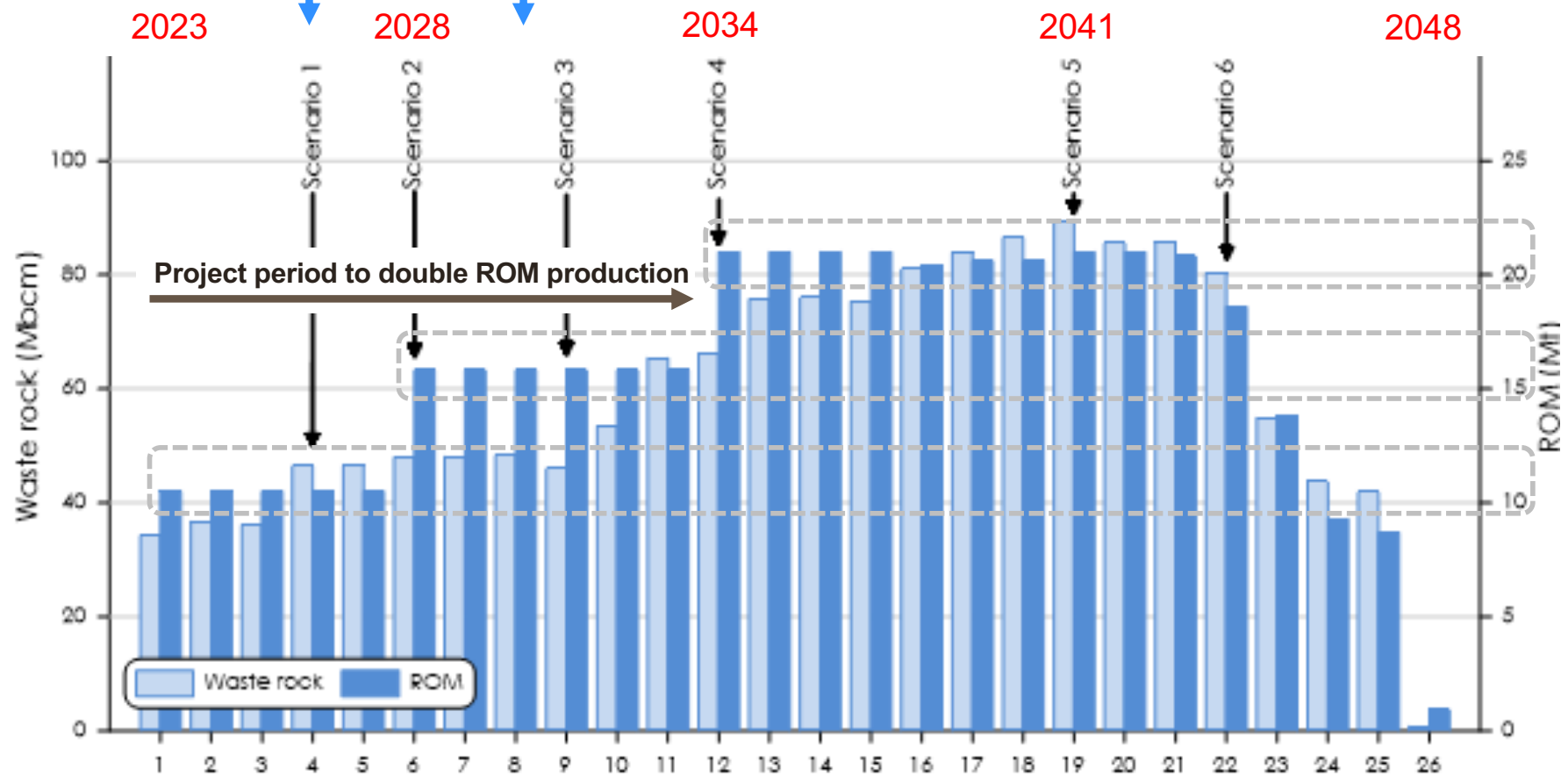


- The Western Link Road is not required, and the Northern Link Road would be realigned
- MACH has two alignment options for the Northern Link Road
- With respect to heritage values, the relinquishment area has a greater concentration of identified Aboriginal cultural heritage sites than the proposed Project infill areas

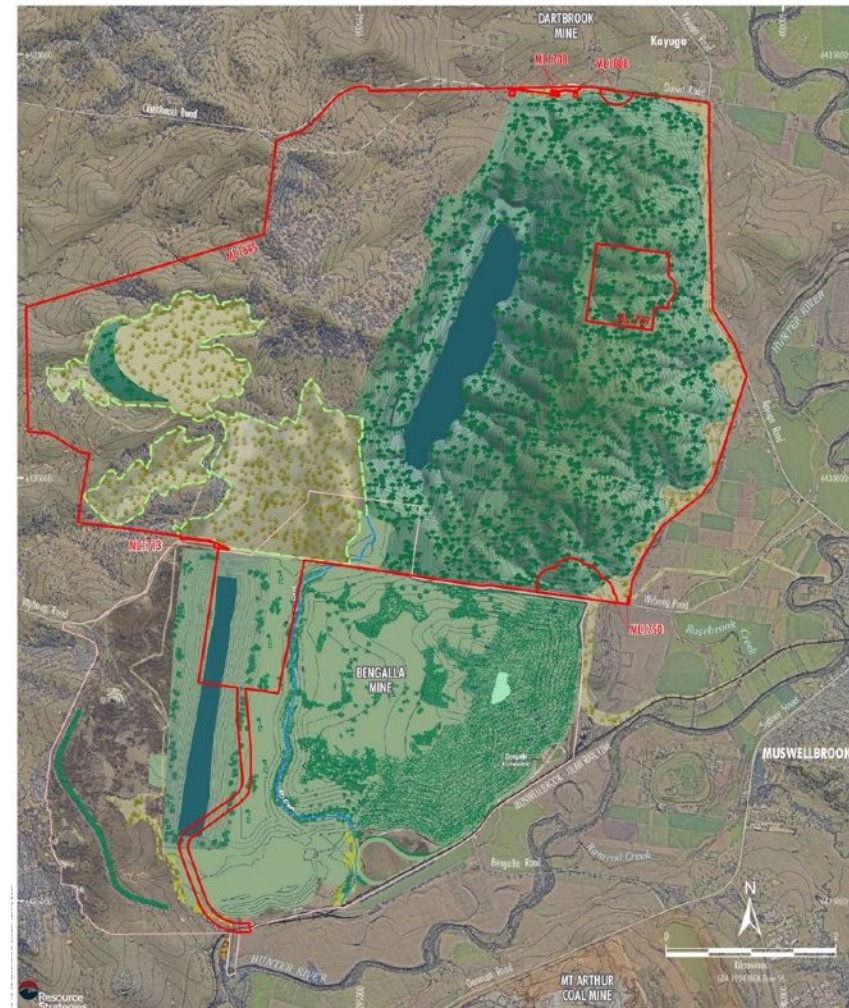
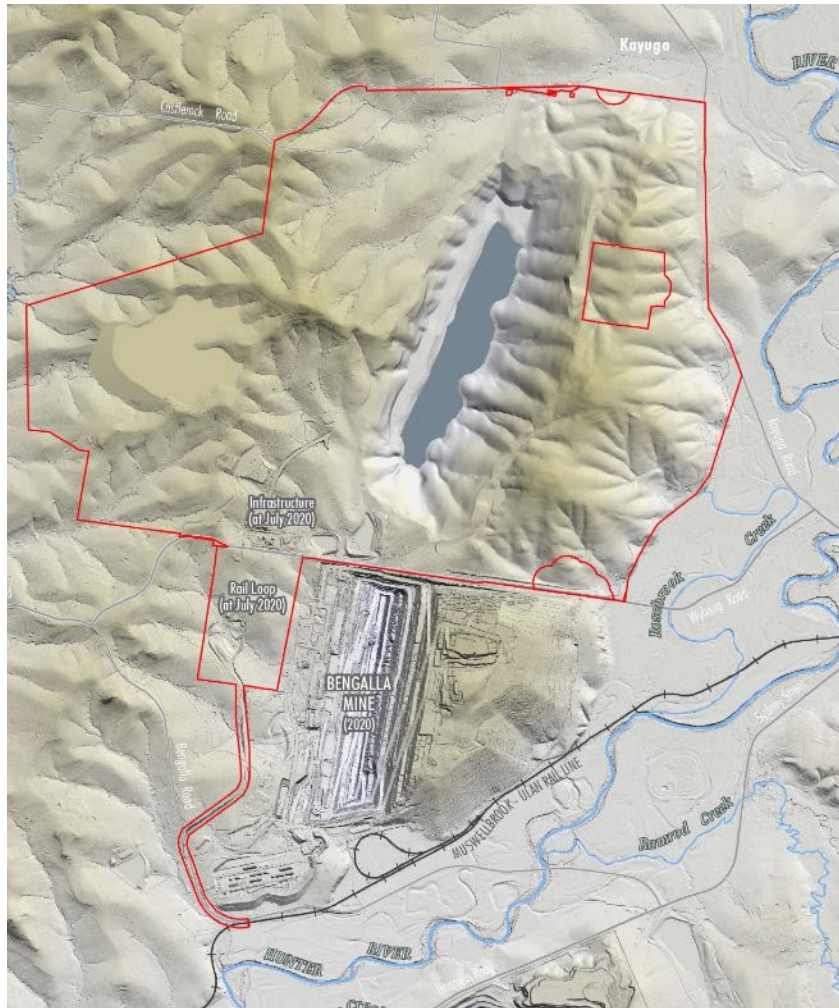
Amenity – Project Staging

BHP's proposed closure of Mt Arthur

Mt Arthur's Current Approved Life



Amenity – Visual



Landform and Rehabilitation

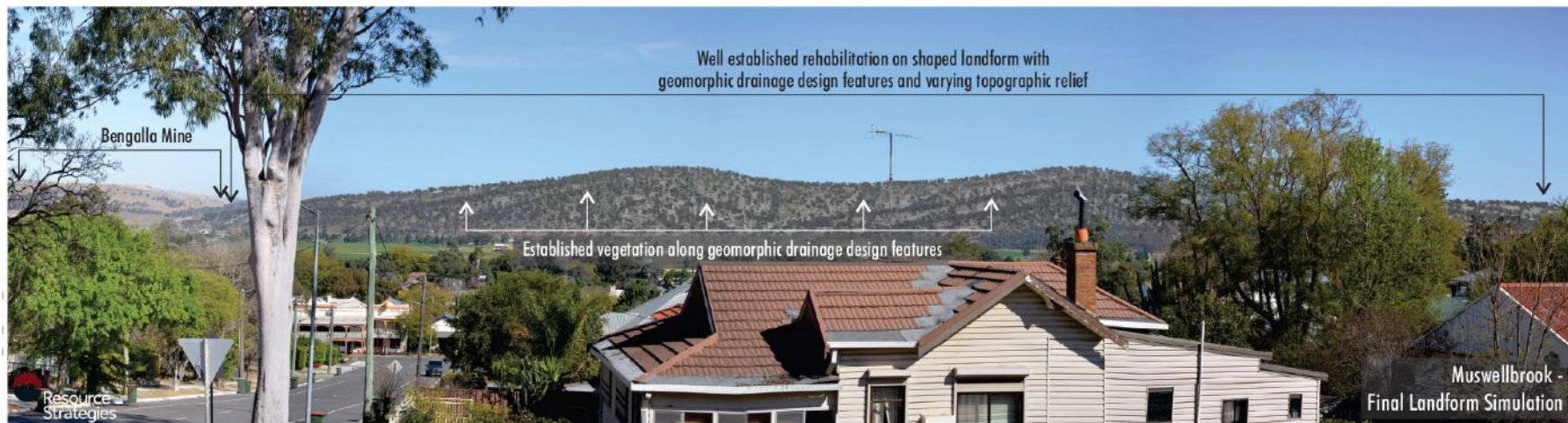
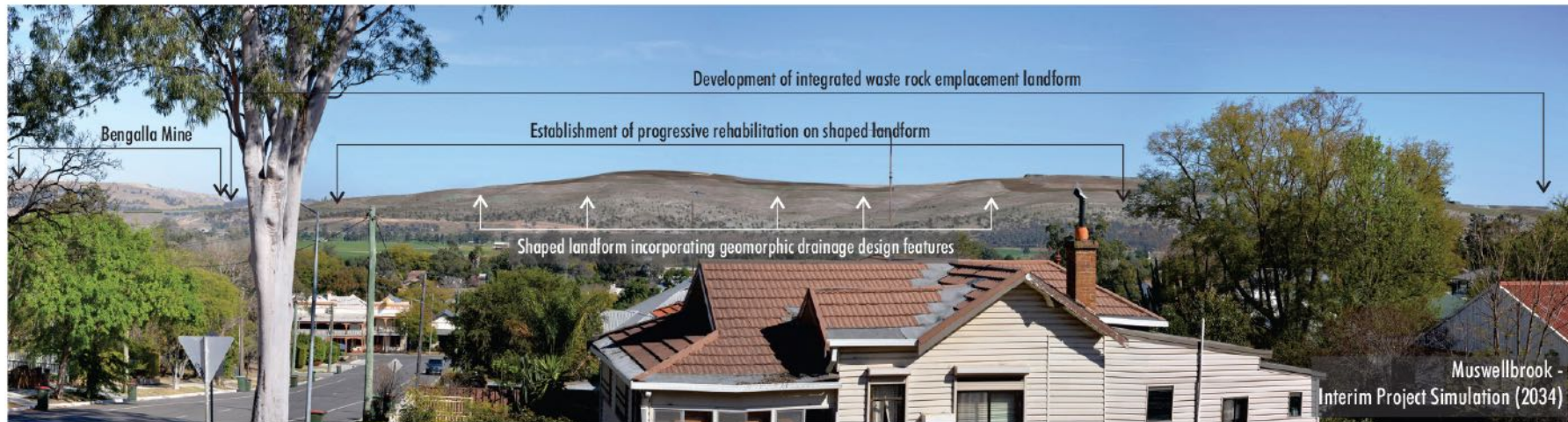


December 2020

Amenity – Visual



Amenity – Visual

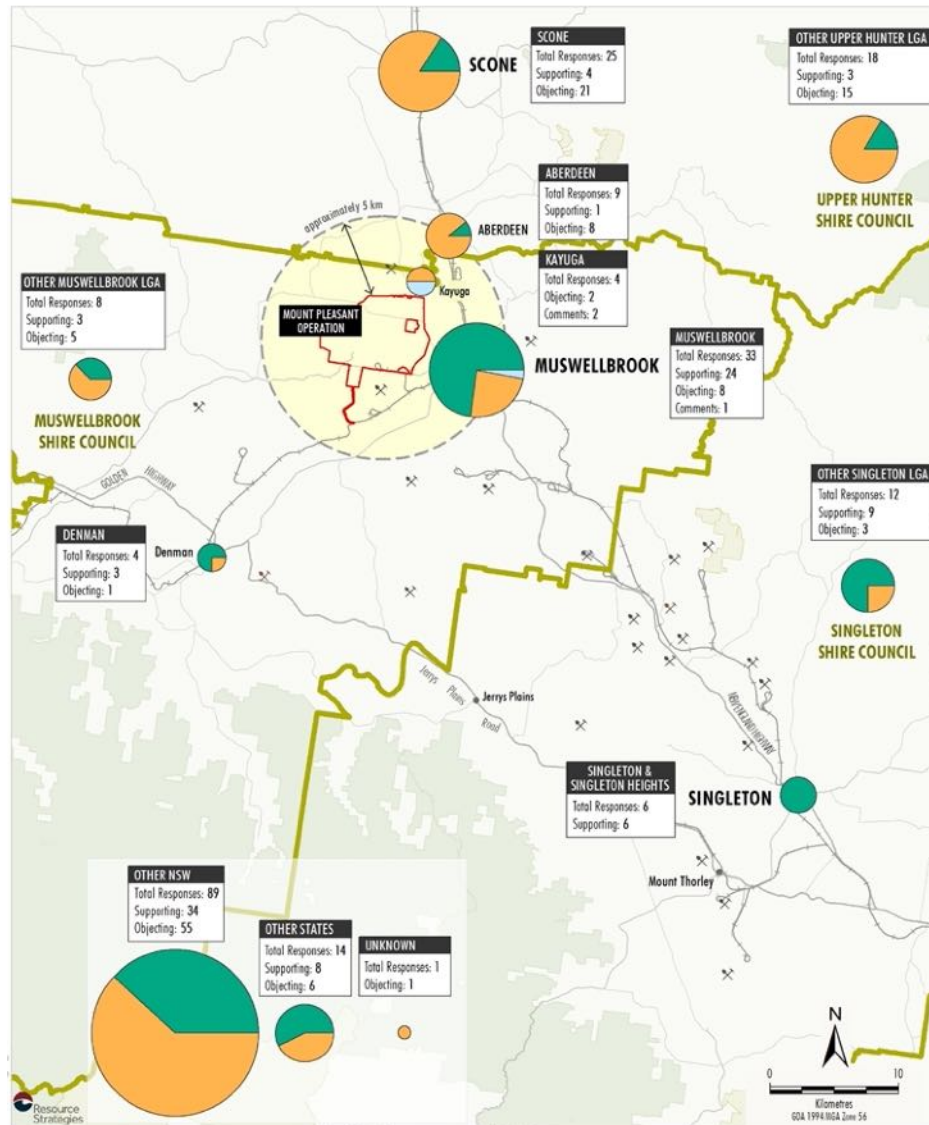


Employment and Contribution



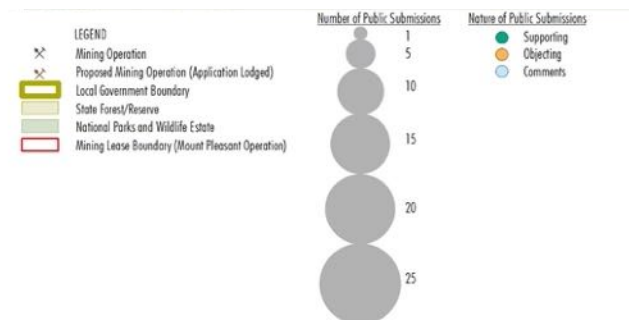
- The Operation currently employs approximately 440 people (380 in Mod 3), inclusive of MACH employees/contractors
- The mine has significant operational expenditure in Muswellbrook Shire, the Hunter region and NSW
- Community contributions and sponsorships and ACDF
- Recent Rail 2 construction capital expenditure has been approximately \$240 million
- The Mount Pleasant Operation has contributed approximately \$200 million in royalty payments to the NSW Government to date
 - >\$100 million of these royalty payments to the NSW State Government have been made in the last 12 months**

EIS Submissions – Geography



- Public submissions on the EIS illustrated a geographical dichotomy:

- More objecting submissions were received from wider NSW and the Upper Hunter Shire, including Aberdeen and Scone
- More supporting submissions were received from Muswellbrook and Singleton and associated Local Government Areas

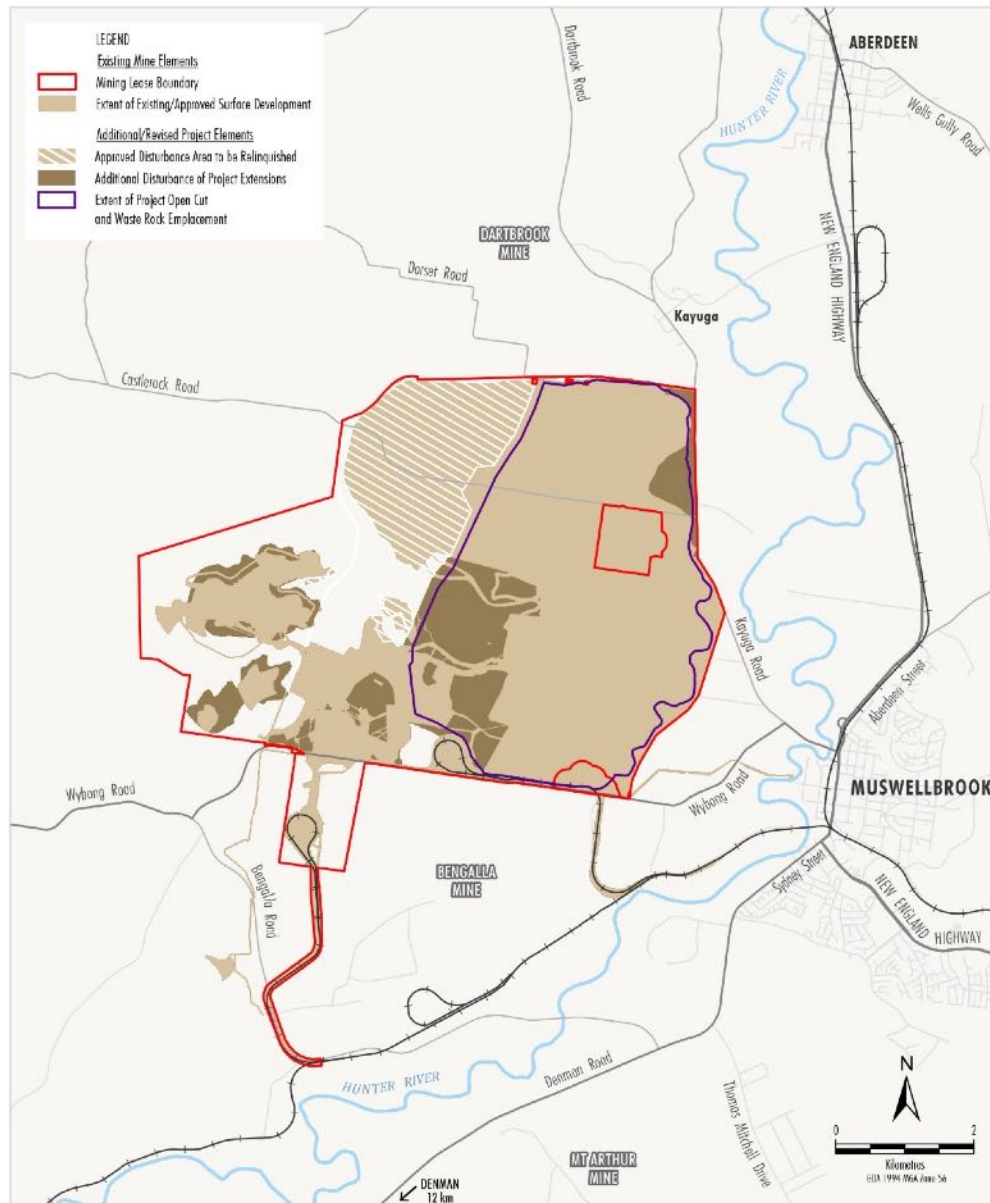


Employment and Contributions



- Approximately \$950 million in capital expenditure
- Project expansion as other operating regional mines deplete existing reserves:
 - Average of 600 FTE employees
 - 830 FTE peak (in 2041)
- Multiple construction phases with associated additional workforce demands
- Approximately \$2 billion in royalties to State of NSW (\$684 million PV)
- Applicable State and Commonwealth taxes and VPA payments to MSC and UHSC
- Continued contributions to and sponsorships of community organisations

Project Summary



Thank You

