

# IPC Public Meeting 7.7.22

## Mt Pleasant Optimisation Project

**Dr Catherine Chicken**  
**BVSc PhD MANZCVS**

---

DISCLOSURES - SEH CONSULTANT VETERINARIAN

- UHAQAC MEMBER REPRESENTING OTHER INDUSTRIES

I WOULD LIKE TO ACKNOWLEDGE THE WONNARUA PEOPLE WHOSE LAND WE ARE MEETING ON TODAY AND PAY MY RESPECTS TO THEIR ELDERS PAST, PRESENT AND FUTURE.

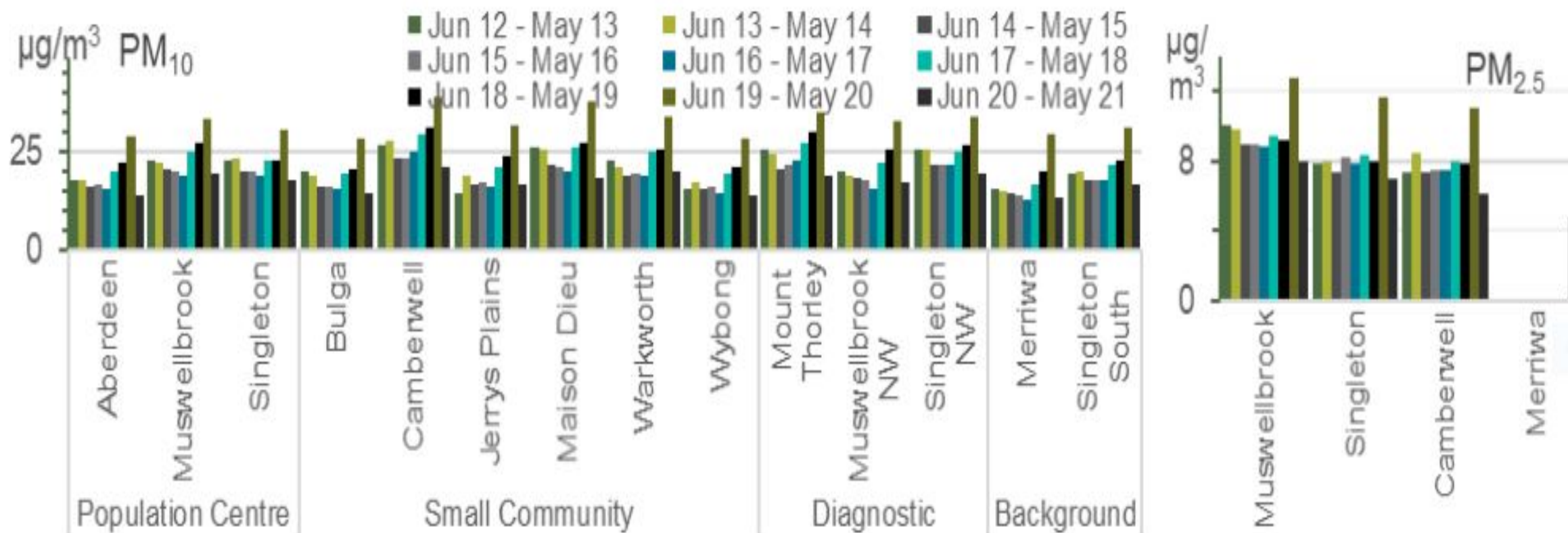
# Focused areas of concern

- **1. CUMULATIVE IMPACT OF OPEN CUT MINING**
  - Air quality
  - Visual amenity
  - Community health and wellbeing
  - Climate change
- **2. SYSTEM FAILURE**



# Air quality

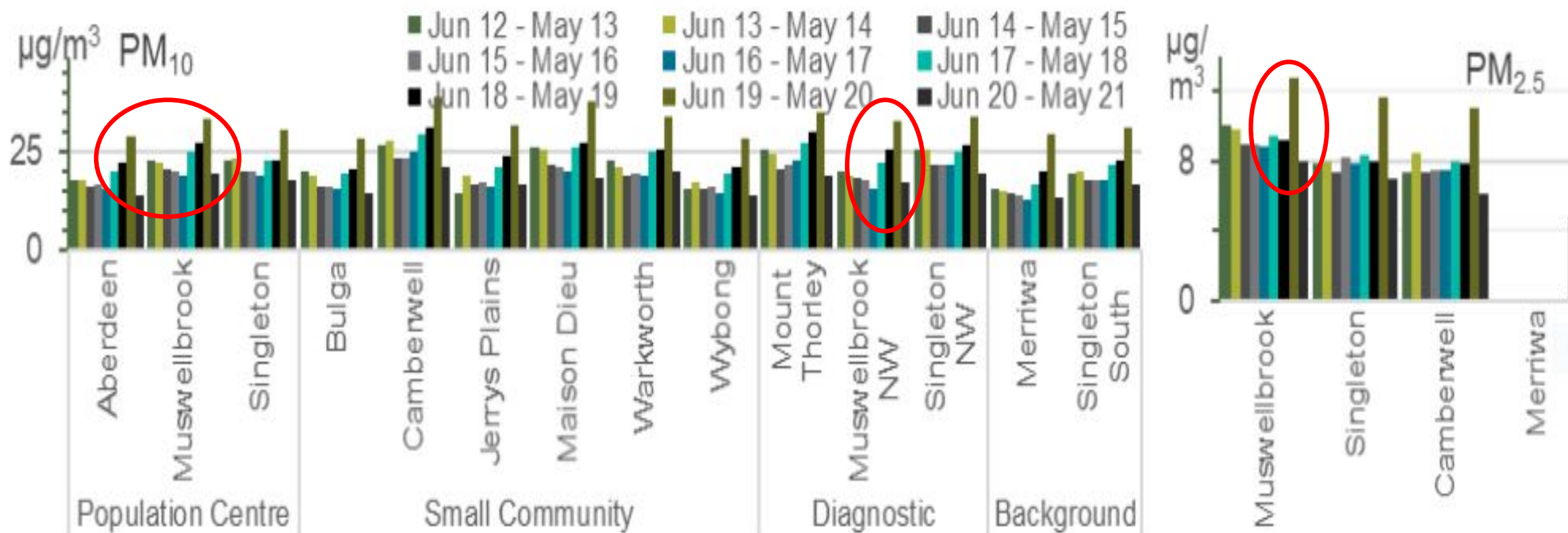
- UHAQMN providing valuable data on air quality in the UH for past 10 years (Feb 2012+)



**Figure 1** PM<sub>10</sub> and PM<sub>2.5</sub> rolling annual averages: to the end of autumn 2013 to 2021

# Air quality

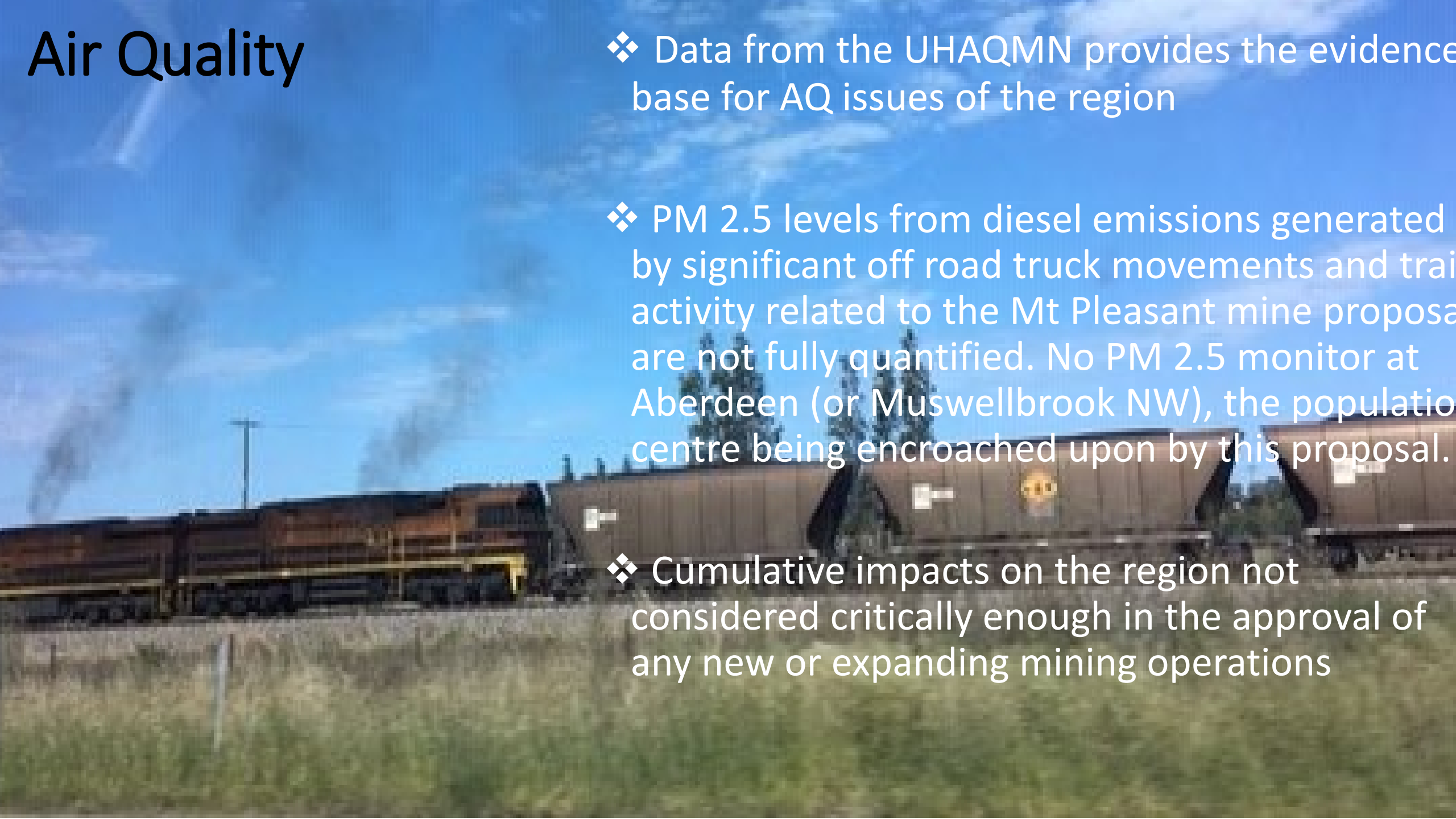
- UHAQMN providing valuable data on air quality in the UH for past 9 years



**Figure 1** PM<sub>10</sub> and PM<sub>2.5</sub> rolling annual averages: to the end of autumn 2013 to 2021

# Air Quality

- ❖ Data from the UHAQMN provides the evidence base for AQ issues of the region
- ❖ PM 2.5 levels from diesel emissions generated by significant off road truck movements and train activity related to the Mt Pleasant mine proposals are not fully quantified. No PM 2.5 monitor at Aberdeen (or Muswellbrook NW), the population centre being encroached upon by this proposal.
- ❖ Cumulative impacts on the region not considered critically enough in the approval of any new or expanding mining operations





# Visual Amenity

- ❖ Impacts significant for all to see, smell &, at times, taste.
- ❖ Promoting tourism and UH as a desirable destination to visit already challenging.
- ❖ UH Shire as yet unadulterated.
- ❖ Visual impacts negatively affect investment in surrounding productive property





# SYSTEM FAILURE SERVING NO-ONE

- ❖ Doubling of coal extraction in time of urgently required action on climate change paradoxical
- ❖ Commitment by all levels of government to effect meaningful change in relation to carbon emissions, yet approvals for increased coal extraction on-going
- ❖ **BROKEN SYSTEM** serving no-one
  - Planning is process-driven rather than outcomes focused.
  - EPA then responsible for enforcing conditions on all fossil fuel extraction projects