



RECORD OF LOCALITY INSPECTION

LOCALITY TOUR NOTES	
Project:	Hume Coal Project and Berrima Rail Project (SSD 7172 & SSD 7171)
Meeting Location:	N/A (see note below)
Date:	Monday 9 August 2021 and Friday 20 August 2021
Note:	<p>Due to the Greater Sydney Region's COVID-19 restrictions, the Commission Panel was not able to conduct a physical site inspection in the normal way (i.e. involving multiple representatives and community observers). As an alternative, on 7 July 2021, the Commission conducted a virtual inspection of the site and immediate surrounds to gain an understanding of the physical characteristics of the site and locality. The Commission made a video recording of the virtual site inspection publicly available on its website on 8 July 2021.</p> <p>While the Commission Panel considers that the virtual site inspection was thorough and complete, it determined that it would be assisted by undertaking an additional physical locality inspection to view the broader context of the local area and its physical characteristics.</p> <p>The Panel individually toured the site and its surrounds from public locations in accordance with the public health orders in place at the time.</p> <p>Commissioner Peter Duncan AM (Chair) and Commissioner Chris Wilson individually travelled to the locality of the site and inspected the area on 9 August 2021, and Commissioner Alice Clark travelled to the locality of the site and inspected the area on 20 August 2021. The Commissioners each travelled the same route and made observations from the same locations.</p>
ATTENDEES	
Commissioners:	Mr Peter Duncan AM (Panel Chair) Professor Alice Clark Mr Chris Wilson
Office of the IPC:	N/A (see note above)
Applicant:	N/A (see note above)
Community Group Representatives:	N/A (see note above)
LOCATIONS AND KEY OBSERVATIONS	
Locations and key observations:	Refer to the Locality Tour Map and Locality Tour Photos attached.

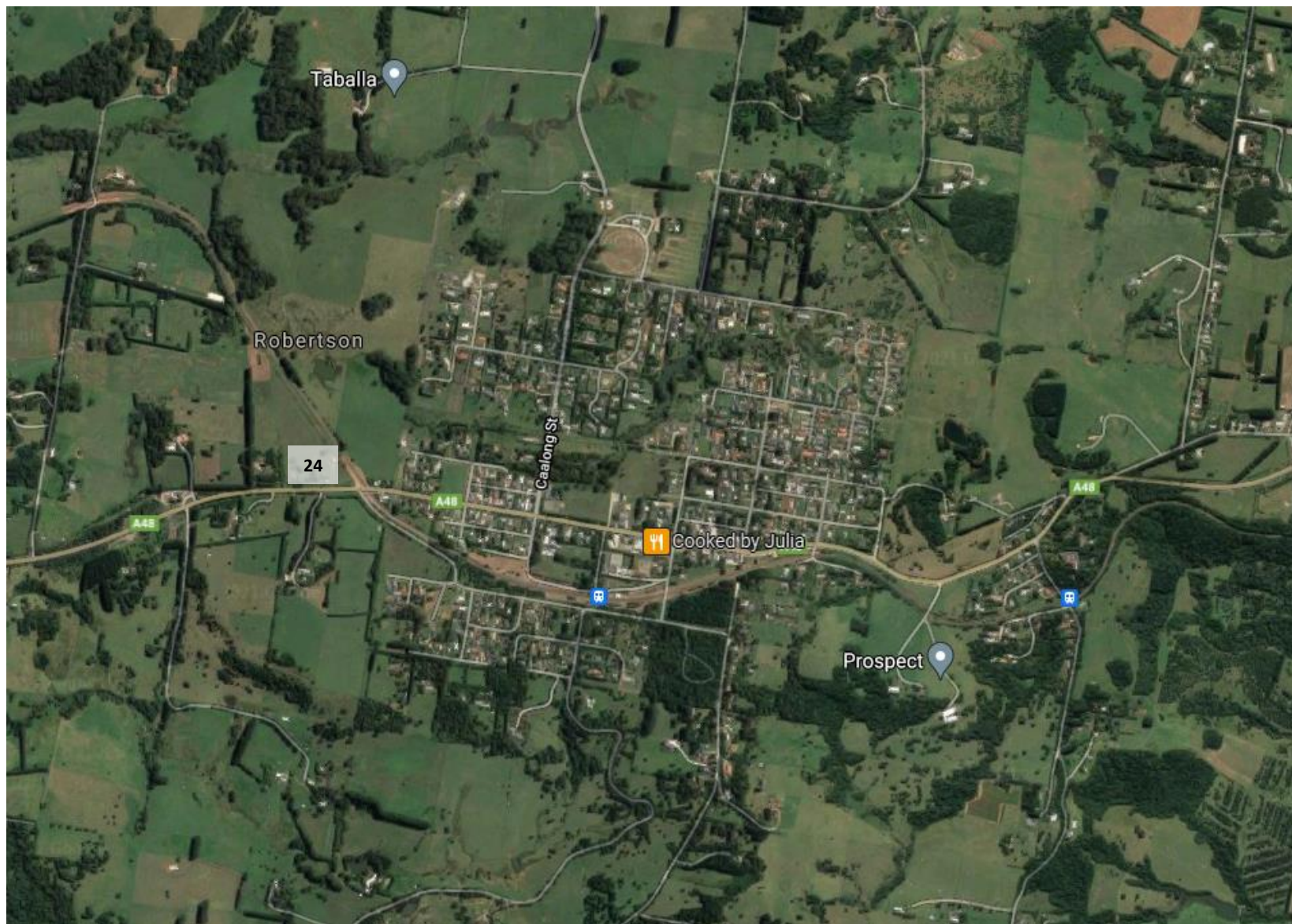


LOCALITY TOUR MAP





LOCALITY TOUR MAP





Location 1

View looking west along Medway Road from the northbound Hume Motorway on-ramp. The proposed mine site and rail loop are located on the left.



Location 2

View looking south-east from Medway Road towards the proposed rail loop (opposite 158 Medway Road).



Location 3

View looking south-west from Medway Road towards the proposed mine stockpiles (opposite 158 Medway Road).



Location 4

View looking south from Medway Road across the location of the proposed mine stockpile towards Mereworth House.



Location 5

View of the entrance to the 'Zen Oasis' wellness and function centre at 230 Medway Road, opposite the project site.



Location 6

View of the entrance to 299 Medway Road, in close proximity to the project site.



Location 7

View of rural lifestyle housing along Medway Road located to the west of the project site.



Location 8

View looking west towards Mereworth House from opposite Medway Farm. The Hume Motorway is located in the foreground.



Location 9

Broad pasture land to the south-east of the project site. View from the entrance of Medway Farm.

LOCALITY TOUR PHOTOS

9 August 2021



Location 10

View of the entrance to Medway Farm.



Location 11

View of the project site entrance off the Old Hume Highway / Mereworth Road.



Location 12

View looking north-east from Belanglo Road towards the proposed site of the underground drift portal and overland conveyor.



Location 13

View of the signage at the southern entrance to Berrima.



Location 14

View of the Boral Cement Works looking south from Berrima Road, New Berrima.



Location 15

View of a train leaving the Boral Cement Works via the at-grade railway crossing at Berrima Road and the queueing traffic.



Location 16

View looking north-east towards the location of the proposed Berrima Road realignment works and underpass for Boral Cement rail siding and proposed rail extension for Hume Coal rail siding.



Location 17

View looking south-west from Berrima Road along the approximate alignment of the proposed rail extension to the south of Boral Cement Works.



Location 18

Disused rail tracks on the disused Medway Mine rail line adjacent to the Old Hume Highway.



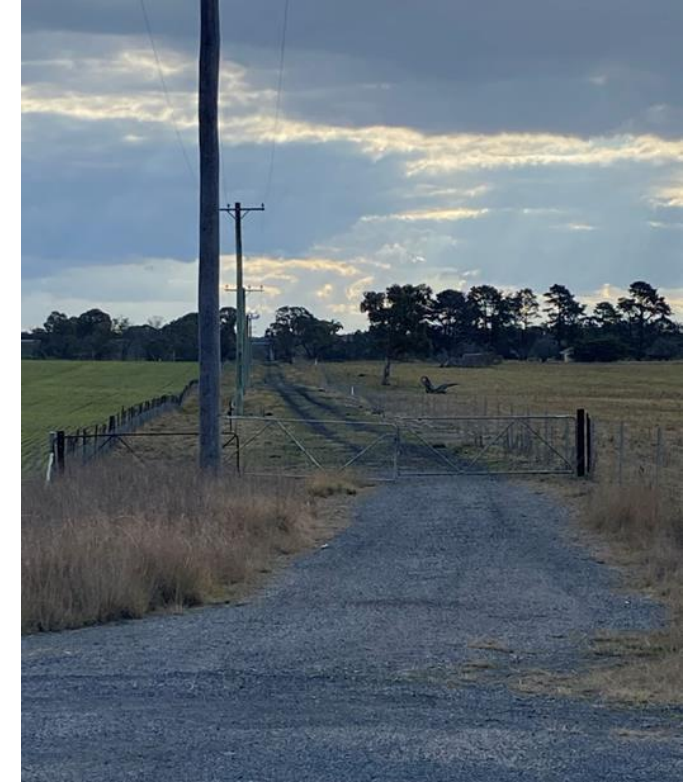
Location 19

View of the disused rail line and proposed location of the project's rail line crossing of the Old Hume Highway. Remnants of the 'Remembrance Driveway' in the foreground.



Location 20

View of the proposed alignment of the project rail line along the corridor of the disused Medway Mine rail line looking east towards the Boral Cement Works from the Old Hume Highway.



Location 21

View of the proposed alignment of the project rail line along the corridor of the disused Medway Mine rail line looking west towards the Hume Motorway underpass and project site beyond.



Location 22

View of the rail underpass under the Hume Motorway from the east.



Location 23

Remembrance Driveway Plaque adjacent to the Old Hume Highway and approximately 100 metres south of the proposed rail line.



Location 24

View of an at-grade rail crossing across the Illawarra Highway at the western entrance to Robertson.

LOCALITY TOUR PHOTOS

20 August 2021



Location 1



Location 2



Location 3



Location 4



Location 5



Location 6

LOCALITY TOUR PHOTOS

20 August 2021



Location 7



Location 8



Location 9



Location 10



Location 11



Location 12

LOCALITY TOUR PHOTOS

20 August 2021



Location 13



Location 14



Location 15



Location 17



Location 18



Location 19

LOCALITY TOUR PHOTOS

20 August 2021



Location 20



Location 21



Location 22



Location 24

Note: There are no images from locations 16 and 23 from the locality tour of 20 August 2021.