



ST ALOYSIUS' COLLEGE

A Jesuit School for Boys



Plan Magis
seeking excellence in learning



ST ALOYSIUS'
COLLEGE

A Jesuit School for Boys

Campuses



Plan Magis
seeking excellence in learning





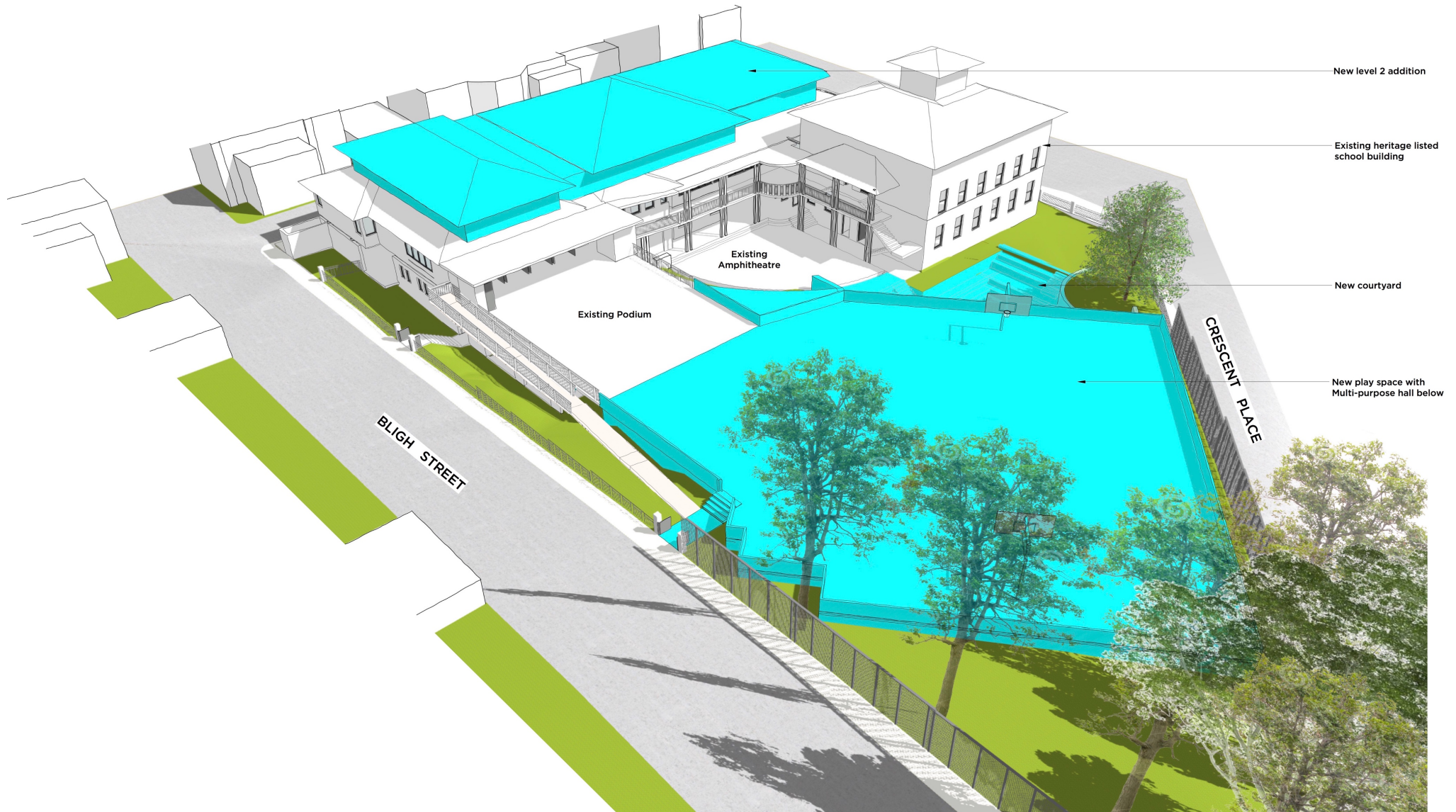
ST ALOYSIUS'
COLLEGE

A Jesuit School for Boys

Burton St



Plan Magis
seeking excellence in learning





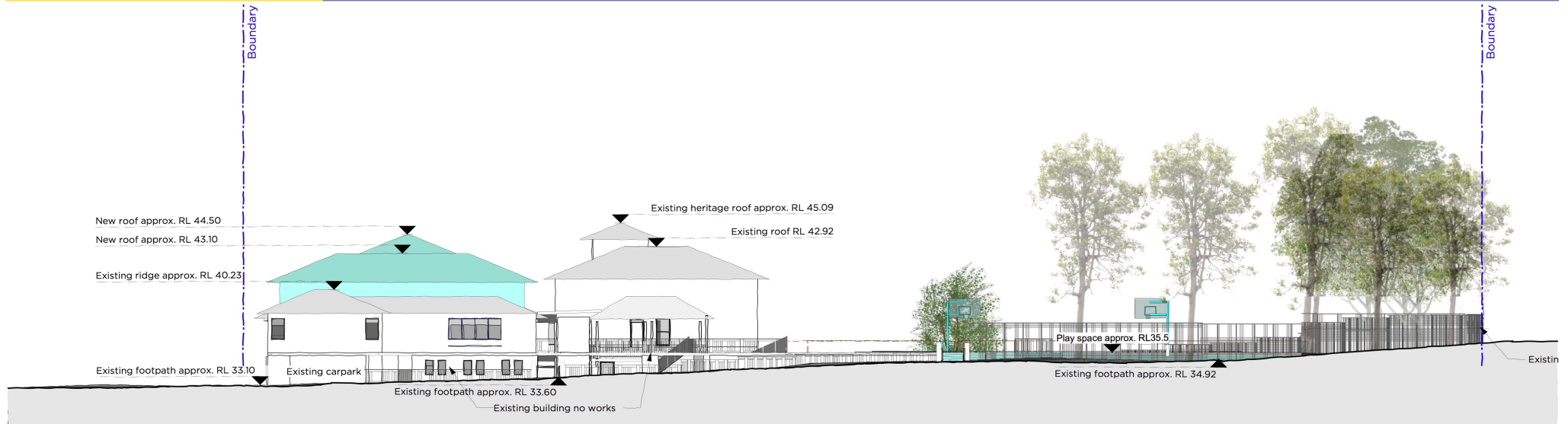
ST ALOYSIUS'
COLLEGE

A Jesuit School for Boys

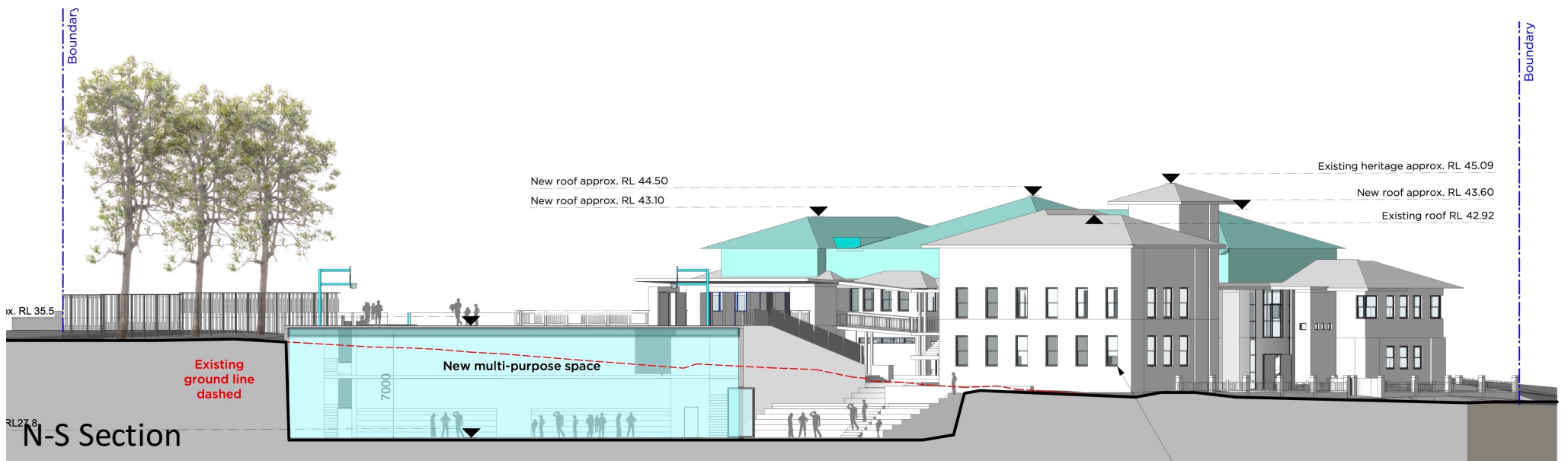
Burton St



Plan Magis
seeking excellence in learning



Bligh St Elevation



N-S Section



ST ALOYSIUS'
COLLEGE

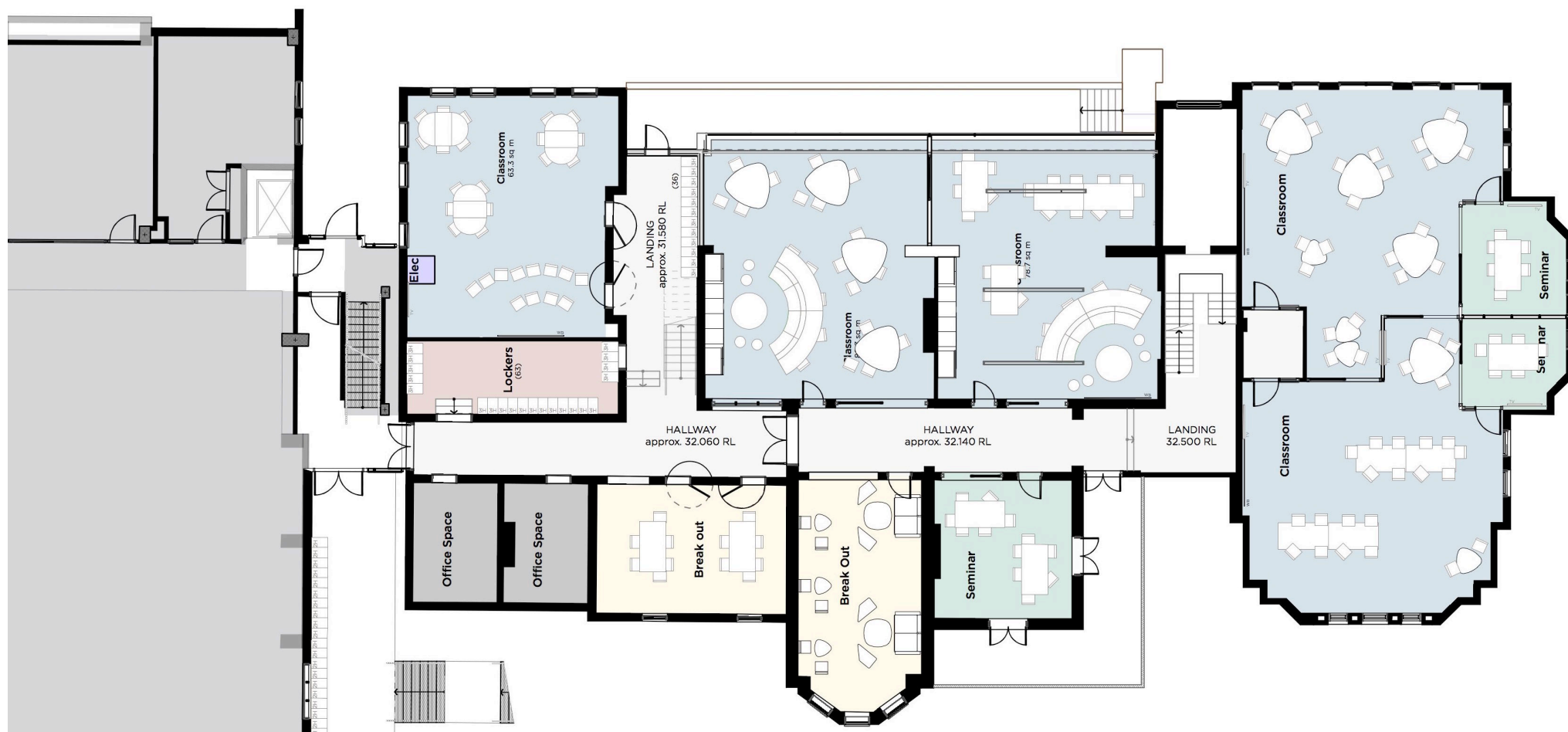
A Jesuit School for Boys

Wyalla



Plan Magis
seeking excellence in learning





Level 1 Plan



Level 2 Plan



ST ALOYSIUS'
COLLEGE

A Jesuit School for Boys

Upper Pitt St



Plan Magis
seeking excellence in learning





ST ALOYSIUS'
COLLEGE

A Jesuit School for Boys

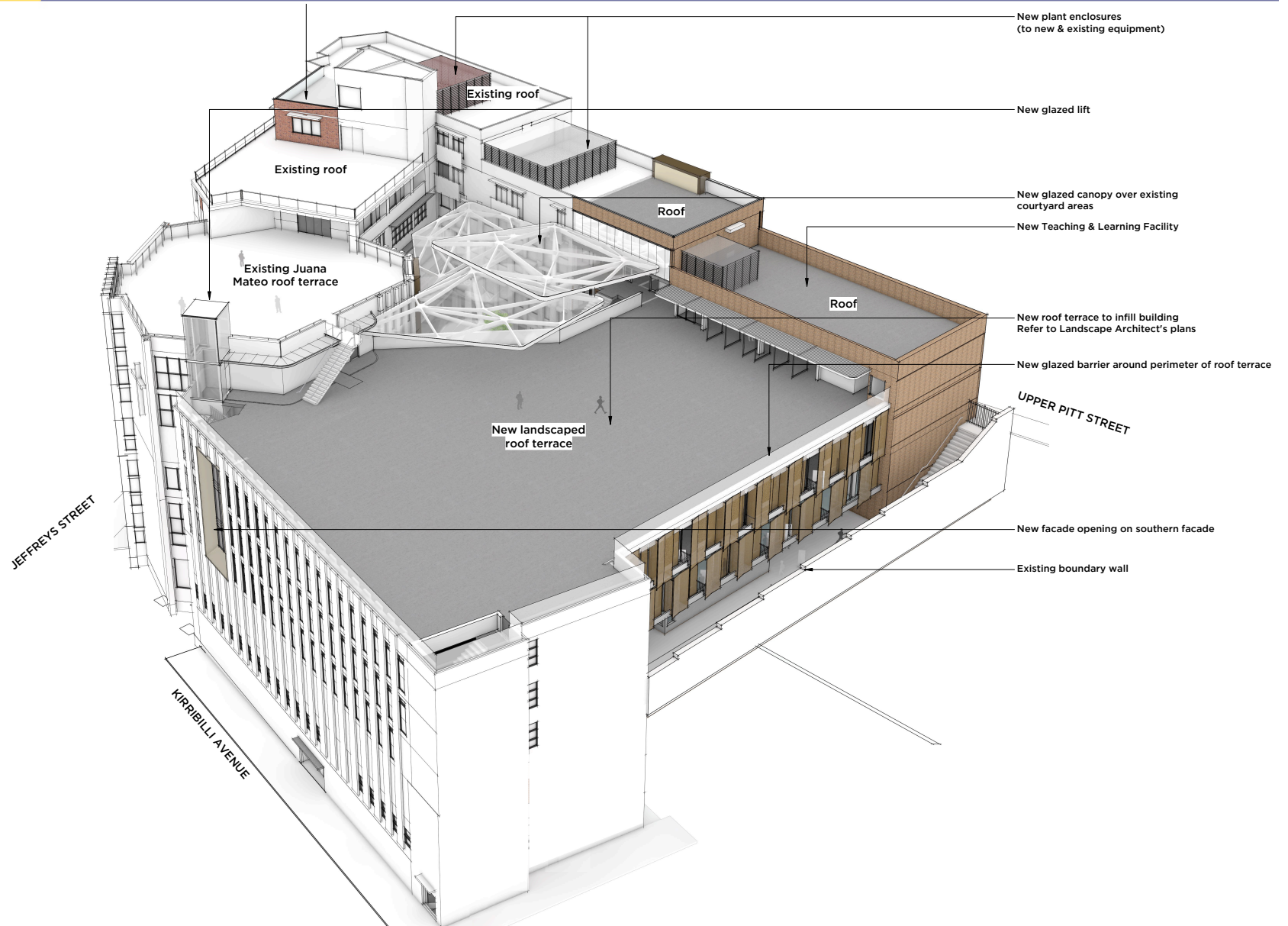
Upper Pitt St



Plan Magis
seeking excellence in learning



Upper Pitt St



Upper Pitt St

Infill Development



Level 0 Plan

Upper Pitt St

Infill Development



Level 1 Plan

Upper Pitt St

Infill Development



Level 2 Plan

Upper Pitt St

Infill Development / Roof Terrace



Roof Plan

Upper Pitt St

Setback / External Treatment



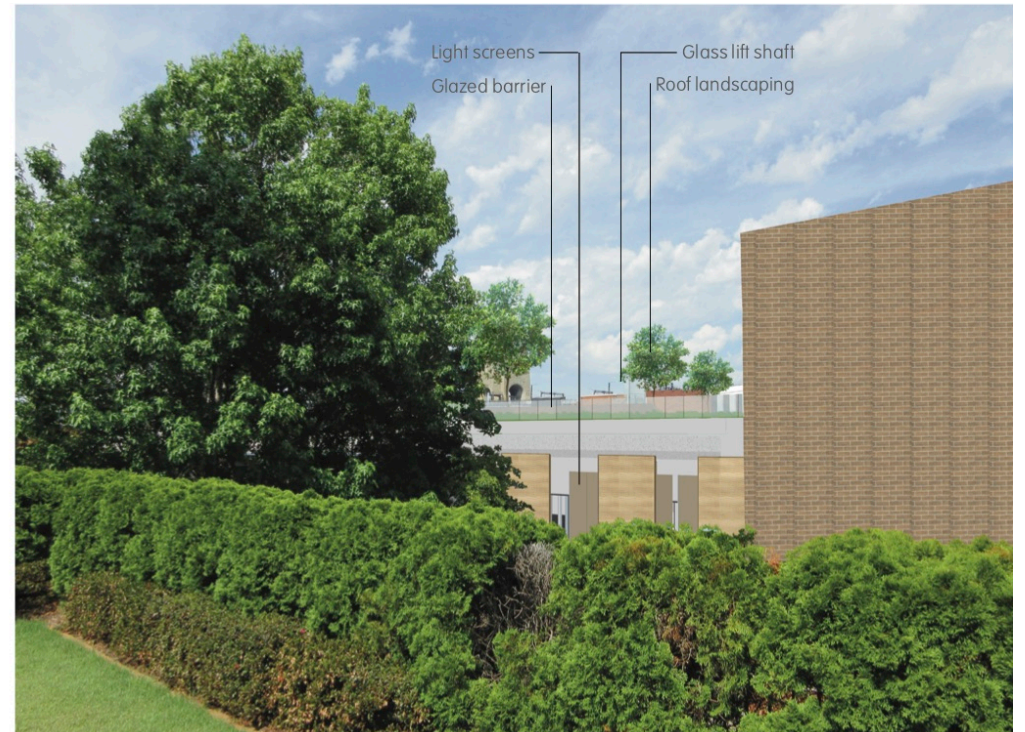
Eastern Facade

Upper Pitt St

Setback / External Treatment



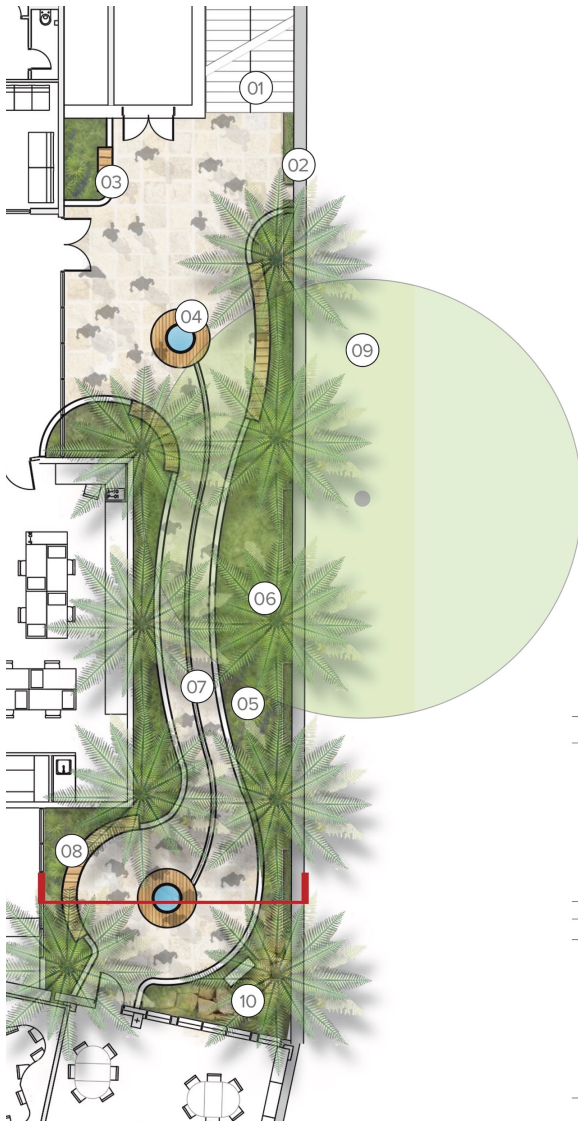
Existing View 5



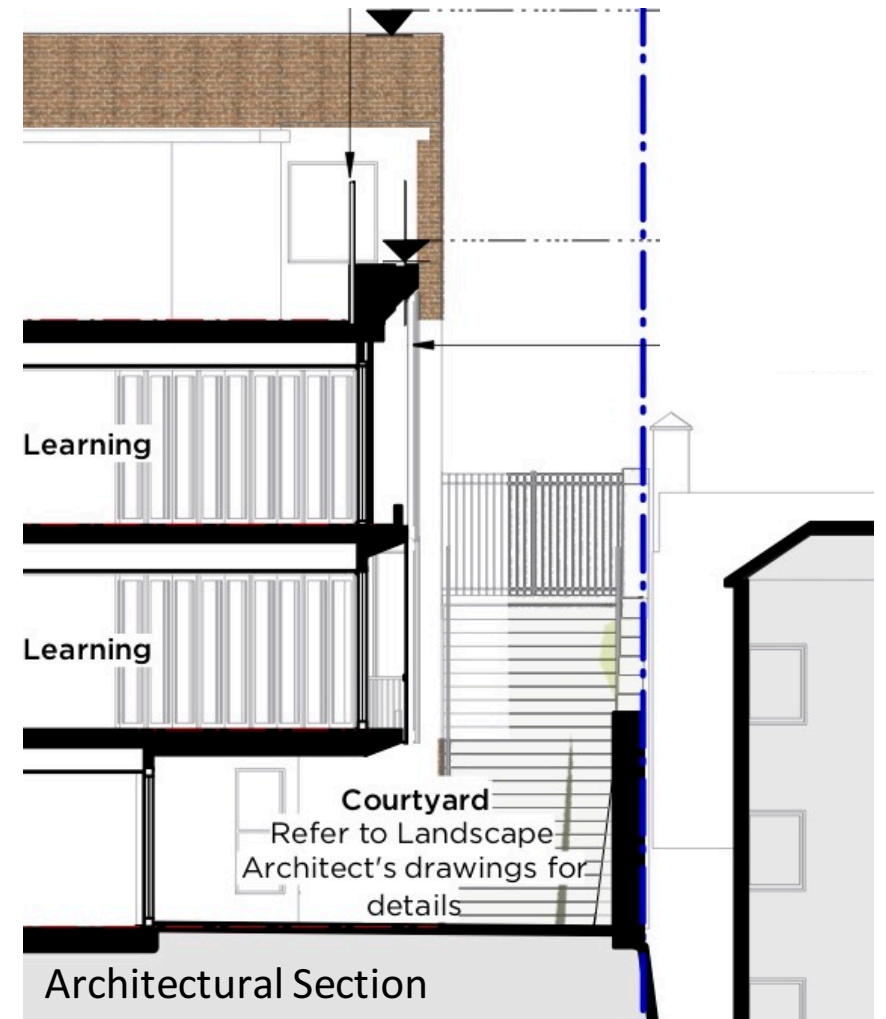
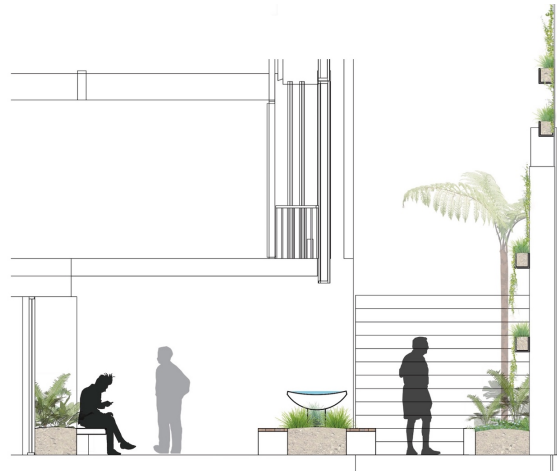
Proposed View 5

Upper Pitt St

Setback / External Treatment



Landscape Section



Architectural Section

Upper Pitt St

Setback / External Treatment



Eastern Facade

Upper Pitt St

Height



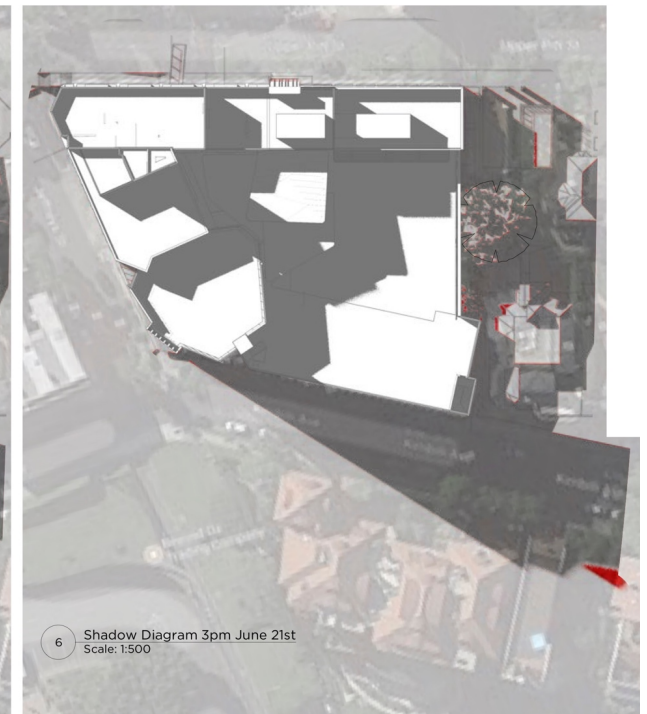
Upper Pitt St Facade

Upper Pitt St

Shadows

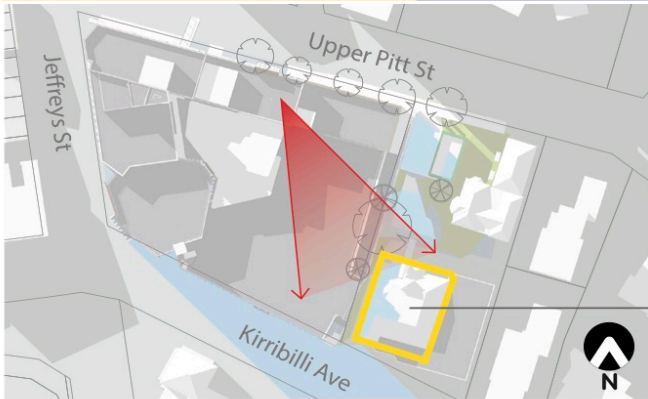


Winter Solstice



Upper Pitt St

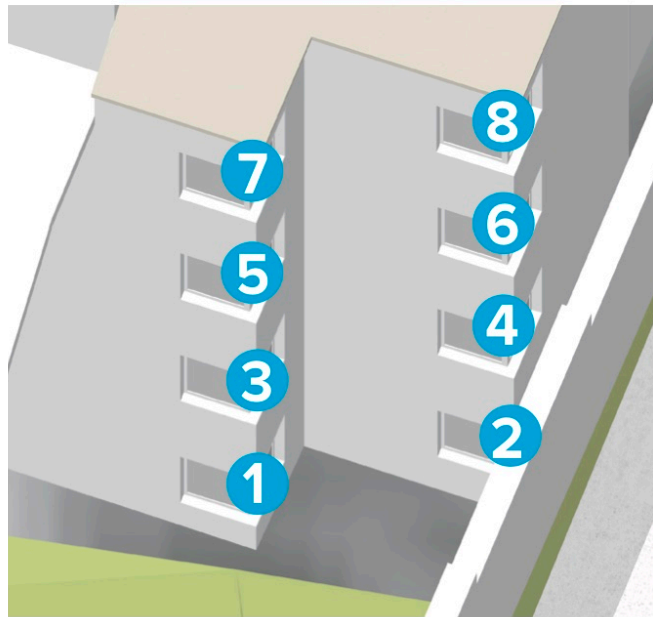
Shadows



Studied building (208/88 Kirribilli Avenue NSW 2061)

Table of windows with possible impact:

| Window N ^o | Existing direct sunlight (hr) 9am-3pm | Proposed direct sunlight (hr) 9am-3pm | Lost hours |
|-----------------------|---------------------------------------|---------------------------------------|------------|
| 1 | 0h | 0h | N/A |
| 2 | 0h | 0h | N/A |
| 3 | 0h | 0h | N/A |
| 4 | 1h (10:30am-11:30am) | 1h (10:30am-11:30am) | N/A |
| 5 | 4h (9:30am-1:30pm) | 3h (9:30am-12:30pm) | 1h |
| 6 | 3h (9am-12pm) | 3h (9am-12pm) | N/A |
| 7 | 5.5h (9:30am-3pm) | 3.5h (9:30am-1pm) | 2h |
| 8 | 5h (9am-2pm) | 3h (9am-12pm) | 2h |



Summary of Findings

The proposal will not affect the existing situation for windows 1, 2, 3, 4 and 6. For windows 5, 7 and 8, the proposed amount of direct sunlight remains fully compliant with the Apartment Design Guide (ADG) which requires minimum 2 hours direct sunlight between 9am and 3pm at mid-winter.

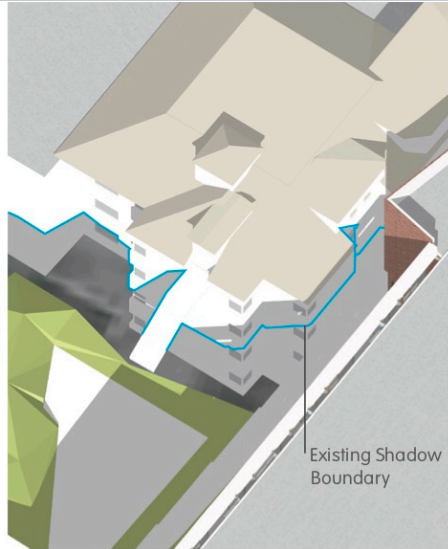
Upper Pitt St

Shadows



1 PM 21 JUNE

EXISTING

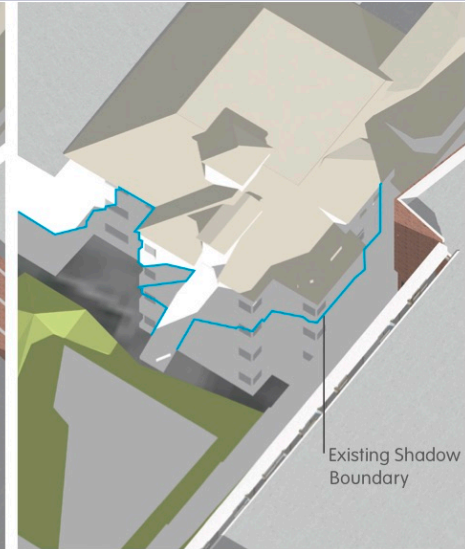


PROPOSED



2 PM 21 JUNE

EXISTING



PROPOSED



3 PM 21 JUNE

EXISTING



PROPOSED

Thank you

St Aloysius' College

47 Upper Pitt Street
Milsons Point NSW 2061
9922 1177
staloysius.nsw.edu.au



Upper Pitt St Operations

Table 1 | Schedule of Current Chapel Terrace Roof Usage*

| Event | Facility | Days of the Week | Frequency (days per year) | Hours/ Duration of Use | Estimated Attendance at Event |
|---|---------------------|-------------------|------------------------------|------------------------------|----------------------------------|
| School Related Activities | | | | | |
| Class Reunions | Chapel Terrace Roof | Friday/Saturday | 10 | 6.00-10.00pm - 4 hours | 80-100 |
| New Year's Eve | Chapel Terrace Roof | | 1 | 5.00pm – 12.30am - 7.5 hours | 320 |
| College Staff-based events i.e. staff social events and Christmas Party | Chapel Terrace Roof | Thursday/Friday | 8 | 3.30-5.30pm - 2 hours | 80-150 |
| Parent Events | Chapel Terrace Roof | Friday/Saturday | 12 | 7.00-10.00pm – 3 hours | 100-320 |
| College Events | Chapel Terrace Roof | Monday-Saturday | 10 | 7.00-10.00pm – 3 hours | 100-320 |
| Non-School Activities | | | | | |
| Events Hosted by the Society of Jesus | Chapel Terrace Roof | Thursday-Saturday | 2-4 | 6.00-9.00pm – 3 hours | 40 |
| External Group Venue Hire | Chapel Terrace Roof | Monday-Saturday | 10 | 7.00-10.00pm – 3 hours | 20-100 |

*Please note that there are no proposed changes to the usage of this facility. However, the College will be using both the Chapel Terrace Roof and the proposed new Roof Terrace on a concurrent basis once per annum. This will be on New Year's Eve when the Chapel Terrace would hold 320 attendees and the New Terrace would hold 1180 attendees for a total of 1500 occupants.

Upper Pitt St

Operations

Table 2 | Schedule of Current Courtyard/Quadrangle Usage

| Event | Facility | Days of the Week | Frequency (days per year) | Hours/ Duration of Use | Estimated Attendance at Event |
|--------------------------------|----------------------|------------------|------------------------------|--|----------------------------------|
| Recess | Courtyard/Quadrangle | Monday-Friday | 180 | 10.35-10.55am - 20mins | 650 |
| Lunch | Courtyard/Quadrangle | Monday-Friday | 180 | 12.45-1.25pm - 40mins | 400 |
| Before and After School Use | Courtyard/Quadrangle | Monday-Friday | 180 | 7.30-8.25am - 55mins 3.15-5.00pm – 1 hour 45mins | 50-100 50-250 |
| Student Assembly | Courtyard/Quadrangle | Friday | 40 | 8.25-8.45am – 20min | 1180 |
| Classes | Courtyard/Quadrangle | Monday-Friday | 180 | During School time – 1 hour in duration | 26 |
| Parent Event | Courtyard/Quadrangle | Saturday | 1 | 7.00-10.00pm – 3 hours | 850 |
| Father/Son BBQ | Courtyard/Quadrangle | Friday | 1 | 6.00-9.00pm – 3 hours | 400 |

Upper Pitt St Operations

Table 3 | Schedule of Proposed Roof Terrace Usage*

| Event | Facility | Days of the Week | Frequency (days per year) | Hours/ Duration of Use | Estimated Attendance at Event/ Use |
|--------------------------------------|-------------------|----------------------------|---------------------------|---|------------------------------------|
| School Related Activities | | | | | |
| Recess | Roof Terrace | Monday-Friday | 180 | 10.35-10.55am - 20mins | 650 |
| Lunch | Roof Terrace | Monday-Friday | 180 | 12.45-1.25pm - 40mins | 400 |
| Before and After School | Roof Terrace | Monday-Friday | 180 | 7.30-8.25am - 55mins 3.15-5.00pm – 1 hour 45mins | 50-100 50-250 |
| Student Assembly | Roof Terrace | Friday | 40 | 8.25-8.45am – 20mins | 1180 |
| Classes | Roof Terrace | Monday-Friday | 180 | During School time – 1 hour in duration | 26 |
| Music Recitals/Drama Productions | Multipurpose Hall | Thursday, Friday, Saturday | 10 | 6.00-9.00pm – 3 hours | 50-100 |
| Parent Event | Roof Terrace | Saturday | 1 | 7.00-10.00pm – 3 hours | 1180 |
| Father/Son BBQ | Roof Terrace | Friday | 1 | 6.00-9.00pm – 3 hours | 400 |
| New Year's Eve | Roof Terrace | | 1 | 5.00pm – 12.30am - 7.5 hours | 1180 |
| Non-School Related Activities | | | | | |
| External Group Venue Hire | Roof Terrace | Thursday-Saturday | 10 | 7.00-10.00pm – 3 hours | 100-300 |

* The College will be using both the Chapel Terrace Roof and the proposed new Roof Terrace on a concurrent basis once per annum. This will be on New Year's Eve when the Chapel Terrace would hold 320 attendees and the New Terrace would hold 1180 attendees for a total of 1500 occupants.