

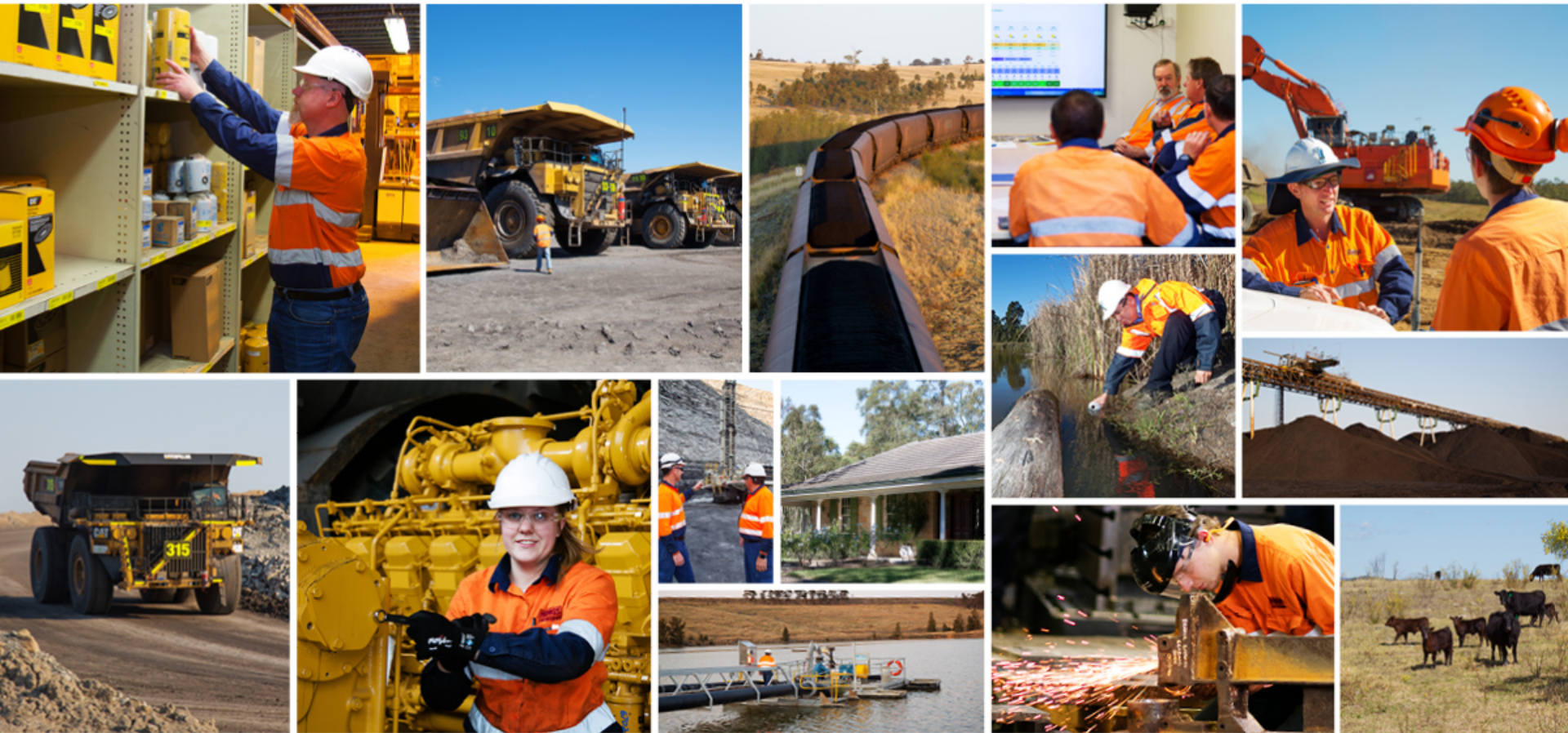
# Rix's Creek South Mine

Extension of Time - DA 49/94 MOD 10

20 May 2019



WE CARE. WE DELIVER.



**OUR PURPOSE:** We are a proud and successful Australian mining and engineering group

**OUR VISION:** We seek excellence in all we do: respecting our history as we shape our future

**OUR VALUES:** We Care. We Deliver.



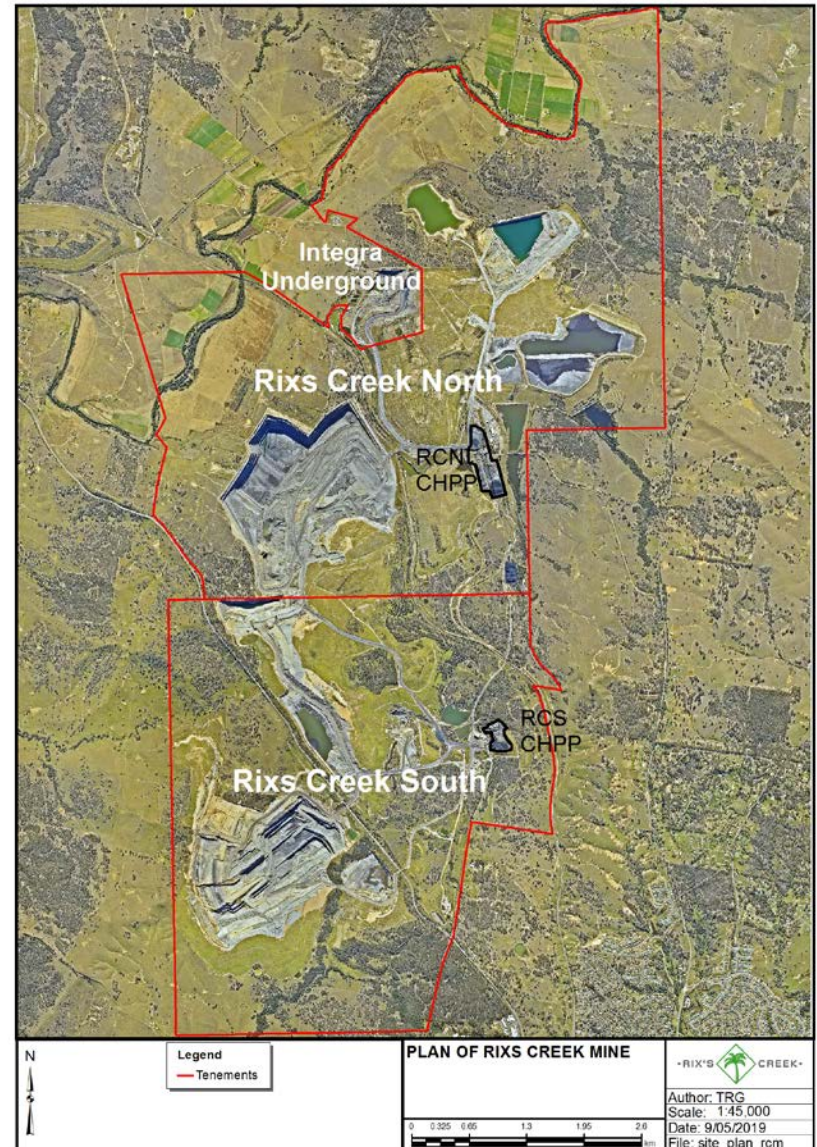
# Overview - RCS

- Rix's Creek South (RCS) part of Rix's Creek Mine
- Active mining 5 km north of Singleton
- Owned and operated by the Australian-owned Bloomfield Group since 1990
- Approved disturbance boundary



# Overview – RCS relationship with RCN

- Rix's Creek North (RCN) was purchased in 2015
- Mining operations at RCN were integrated with RCS in 2016
- Coal mined at RCN open cut is processed at the RCS CHPP and blended on the RCS product stockpile
- RCN CHPP is contracted to wash coal from Glencore's Integra underground operation
- Group administration, management and maintenance resources are shared across both infrastructure areas





# Existing RCS

- RCS operates under DA 49/94(as modified) which allows extraction of coal to be undertaken until 24 June 2019
- SSD 6300 to extend operations for 21 years ~2040 is currently under assessment



Source: SSD 6300 EIS Fig 1-3

# SSD 6300 Status

Action	Date	2013				2014				2015				2016				2017				2018				2019			
		Q1	Q2	Q3	Q4	Q1	Q2	Q3	Q4	Q1	Q2	Q3	Q4	Q1	Q2	Q3	Q4	Q1	Q2	Q3	Q4	Q1	Q2	Q3	Q4	Q1	Q2	Q3	Q4
Request for Director General Requirements (DGRs)	21-11-13																												
DGRs Granted	03-03-14																												
Environmental Impact Statement (EIS) Exhibition End	03-12-15																												
Response to Submissions (RTS)	20-10-16																												
RTS Addendum	21-12-16																												
Revised RTS	24-12-17																												
Planning Assessment Report	10-05-18																												
Independent Planning Commission (IPC) Public Hearing	06-06-18																												
IPC Review	31-08-18																												
Response to IPC Review	07-12-18																												
Department of Planning & Environment (DPE) Assessment	Ongoing																												
IPC Assessment and Determination	Not commenced																												
DA49/94 Coal Extraction Expiry	24-06-19																												

Mod 10 submitted 26<sup>th</sup> February



# Purpose of Mod 10

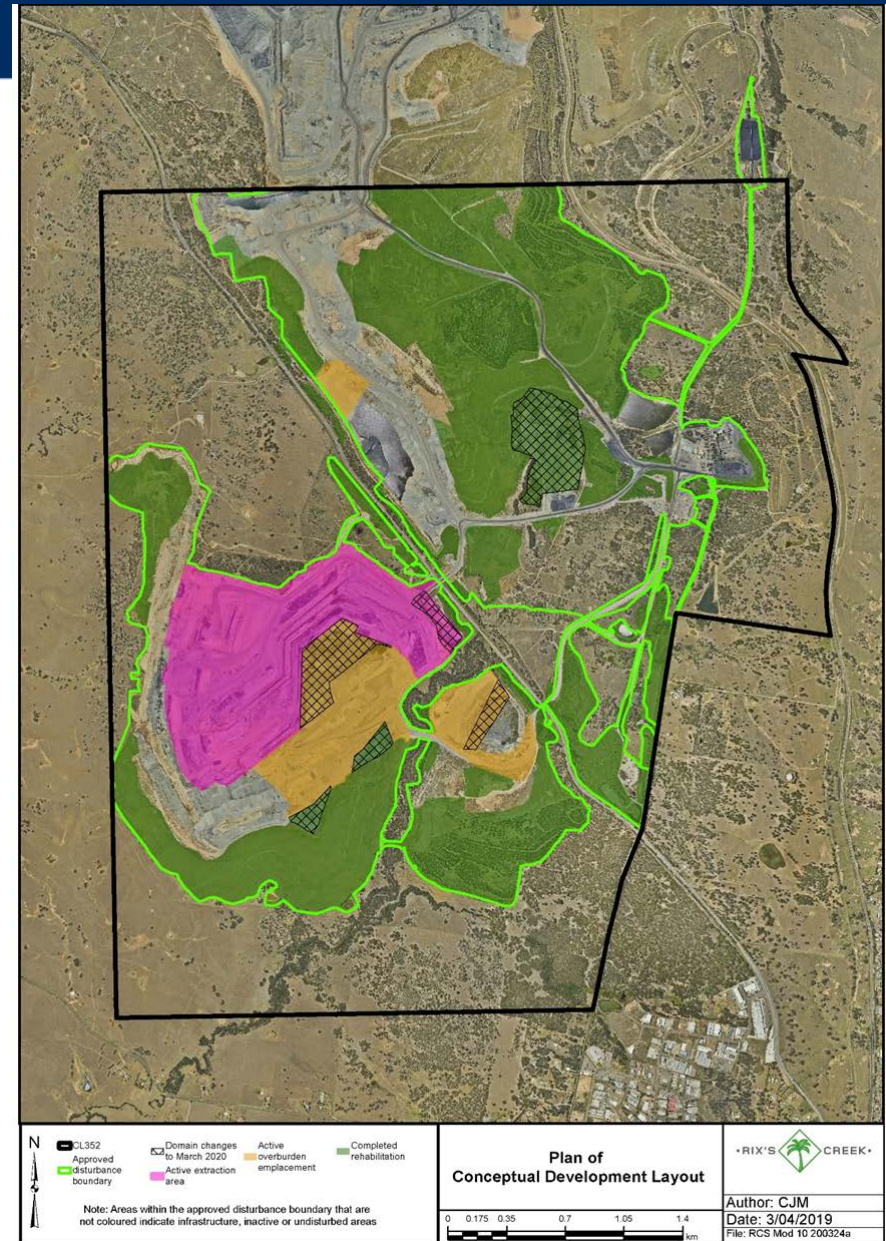
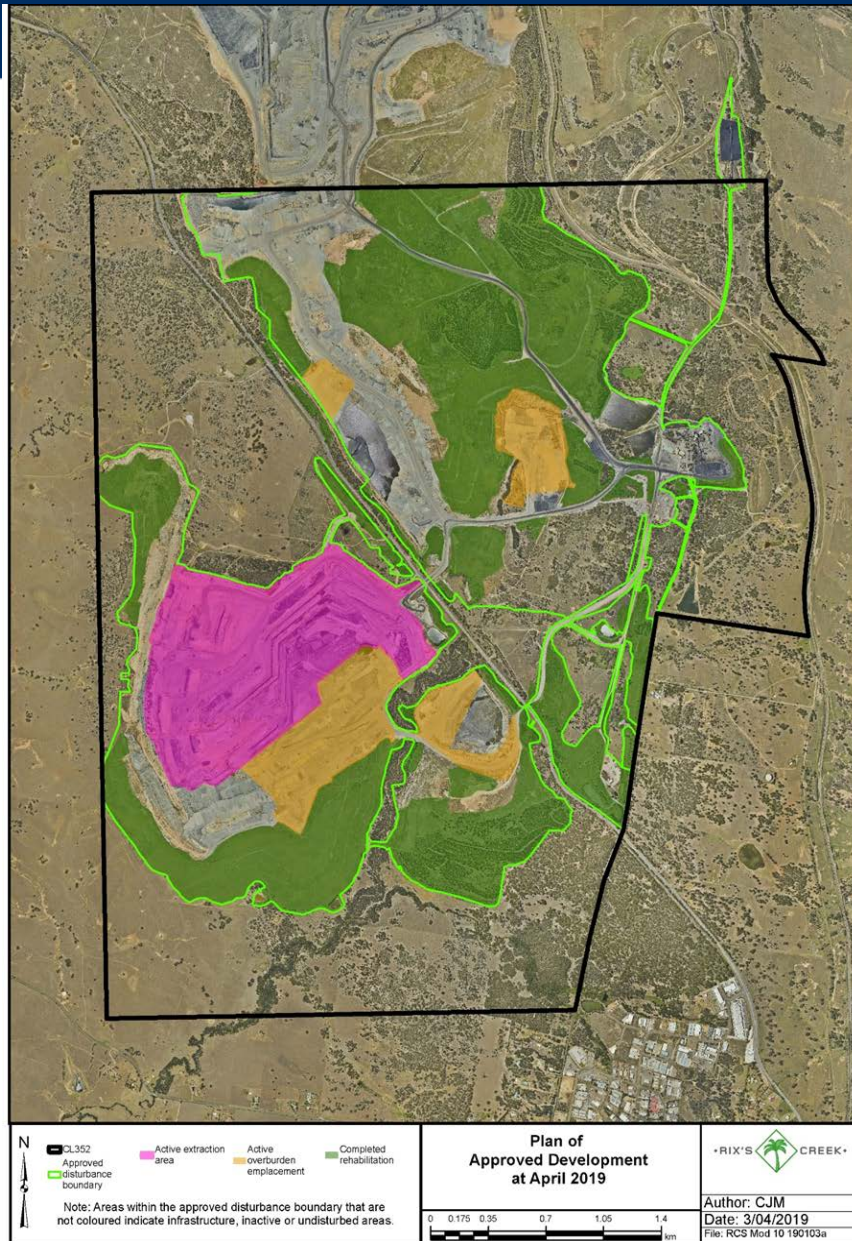
- Mod 10 was submitted on 26 February 2019 as concerns increased as to whether the determination for SSD6300 would be delivered before 24 June 2019
- The 9 month extension applied for was to provide a time contingency to enable due process for the assessment and determination of SSD 6300 to be completed whilst maintaining current operations at Rix's Creek South. The 9 months was selected as our best estimate of longest period required.
- Approval of Mod 10 prior to 24 June 2019 will –
  - avoid significant disruption to the business, workforce, contractors, suppliers and the local economy
  - Provide interim security of employment for 255 full time employees attributable to Rix's Creek South while the SSD 6300 is being determined
  - Allow continued operations, while SSD 6300 is being determined and will provide confidence to our people, local community and our customers

# Proposed Mod 10 - key points

- Mod 10 was submitted under Section 4.55(1A) of the EP&A Act and sought to extend coal extraction for nine months to March 2020
- All aspects of the mining operations will remain as currently approved including within the approved footprint
- The total material that will be extracted and processed during the extension period will be within the volumes that were expected to be mined under DA 49/94
- Operational activities will be consistent with the Approval and have therefore been previously assessed



# Proposed Mod 10 (cont.)





# Submissions from Agencies

- Submissions were received from 7 agencies
- None required any additional information
- NSW Health stated “The modification will have minimal impact on public health, and for this reason, Hunter New England Population Health has no comments to make regarding this proposal.”
- EPA stated ” Given that the current environmental impacts of the mine will not be changed by the proposed extension, the EPA considers that the environmental impacts of the mine will be able to be satisfactorily managed under existing conditions if this modification is granted.”

- Total emissions and impacts including the 9 month extension will be less than originally approved as:
  - Rix's Creek has operated at lower annual production rates than approved
  - Cumulative material moved at end of the 9 months (252 Mbcm) will be 24 Mbcm less than approved under DA 49/94
- Coal mined within the 9 month extension period would be contracted to countries which are signatories to the Paris Agreement or have a similar strategy of GHG reductions



# Annual Economic Contribution of The Bloomfield Group

- Employment for 599 direct employees
- Employment for 128 full time equivalent contractors
- Net wages of \$50 million injected into the Hunter community annually
- Support of community initiatives through The Bloomfield Group Foundation donations and sponsorships
- Annual Hunter expenditure of \$231M (suppliers and contractors)
- Major payments to the Federal and State government of \$103M

# Benefits from MOD 10 approval prior to 24 June

- Continuity of employment for 255 full time employees attributable to Rixs Creek South while the SSD 6300 is being determined
- Continuity of employment for 44 full time equivalent contractors
- Net wages of \$15.7M injected into the Hunter community over the 9 months
- Ongoing capacity to support community initiatives
- Hunter expenditure during the 9 months of \$70M (suppliers and contractors)
- Major payments over 9 months to the Federal and State government of \$37M
- No need for disruptive and costly short term contingency plans
- Maintenance of customer confidence which reduces the risk of the loss of long term key contracts



# Conclusion

- The total material that will be extracted and processed during the extension period will be within what is currently approved to be mined under DA 49/94
- Operational activities will remain consistent with DA 49/94: there are no changes to previously assessed impacts
- Employment and economic benefits to businesses and governments will be maintained
- Customer confidence will be secured
- The need for disruptive and costly short term contingency plans will be eliminated
- 7 regulators did not require any additional information and confirmed that they see no additional impacts and therefore no need for further assessment of impacts
- DPE considers – “that the socio-economic benefits of the modification significantly outweigh the minor continuation of impacts”, and
  - “that the modification is warranted to protect the mine’s workforce, contractors, suppliers, customers and owners from unnecessary disruption. Therefore, the Department is satisfied that the proposed modification is in the public interest and is approvable.”

Our Purpose - What we do

**We are a proud and successful  
Australian mining and engineering group**

Our Vision - What we aspire to be

**We seek excellence in all we do:  
respecting our history as we shape our future**