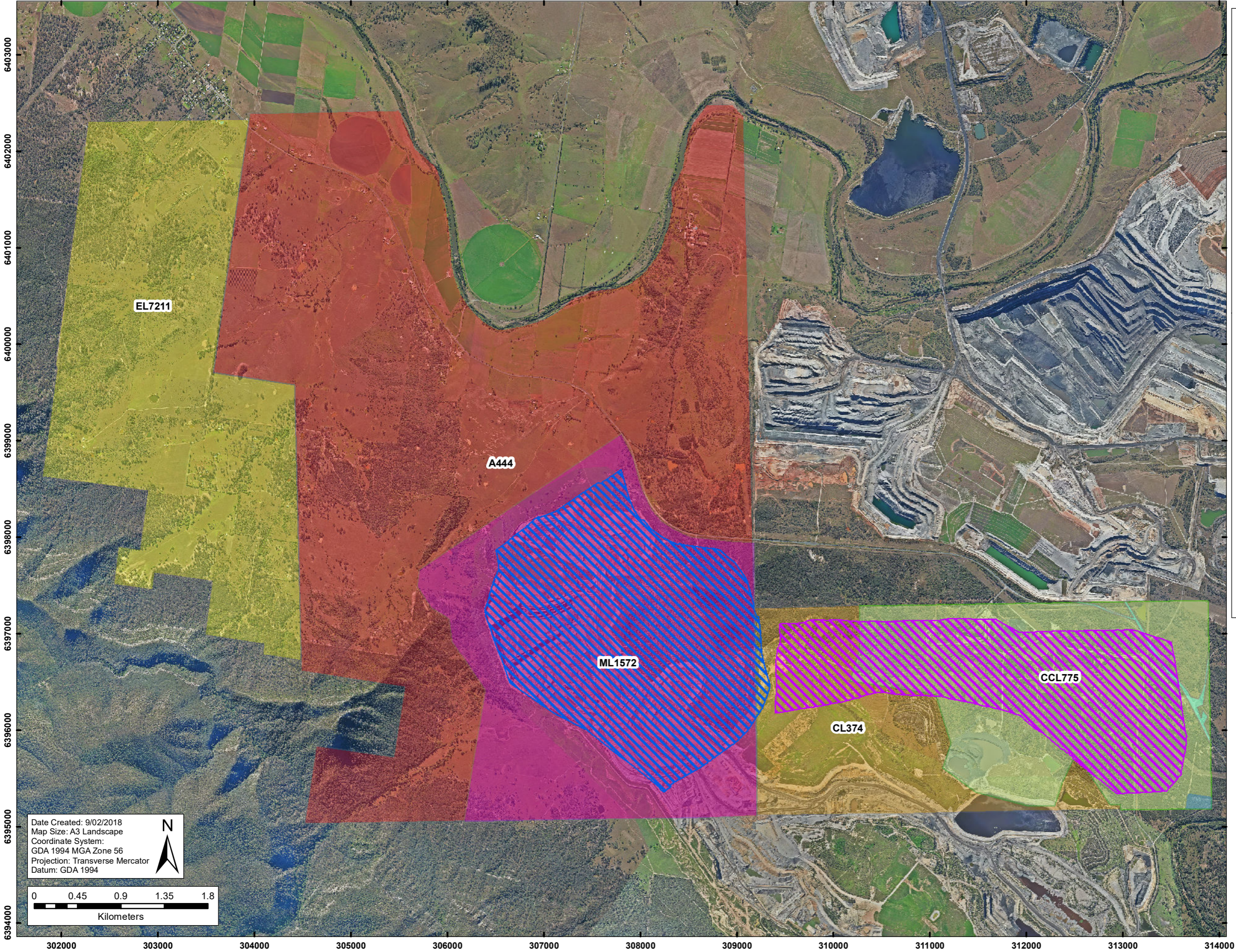


# United Wambo Project

## United Wambo Project JV Tenements



- Legend**
- CCL775 (Surface to 5m Above Bayswater Seam)
  - ML1572 (Wambo) - (Surface to base of the Whynot Seam) / A444 - (Base of the Whynot seam to a depth of 900 metres below AHD)
  - CL374 (Wambo) - (Embraces the surface and soil below to a depth of 5m above the Bayswater Seam) / CCL775 (Base of Whynot Seam to 5m Above Bayswater Seam)
  - A444 (Embraces the surface and soil below to a depth of 900 metres below AHD)
  - EL7211 (Wambo) - (Embraces the surface and soil below to a depth of 900 metres below AHD)
  - EL8452 (Surface to 20m) / CCL775 (20m to 5m Above Bayswater Seam)
  - EL8456 (Surface to 20m) / CCL775 (20m to 5m above the Bayswater Seam)
  - Proposed United Open Cut
  - Proposed Wambo Open Cut

**DISCLAIMER**  
Subject To Survey.  
Glencore makes every effort to ensure the quality of the information available on this map. Before relying on the information on this map, users should carefully evaluate its accuracy, currency, completeness and relevance for their purposes, and should obtain any appropriate professional advice relevant to their particular circumstances. Glencore cannot guarantee and assumes no responsibility for the accuracy, currency or completeness of the information and by using this map you accept that Glencore has no liability for any loss or damage in any form whatsoever caused directly or indirectly from the use of this map.

**DATA SOURCE**  
© NSW Department of Finance & Services (LPI) 2015  
© NSW DTIRIS (Minerals & Petroleum) 2015  
© Glencore 2015 © ESRI 2015