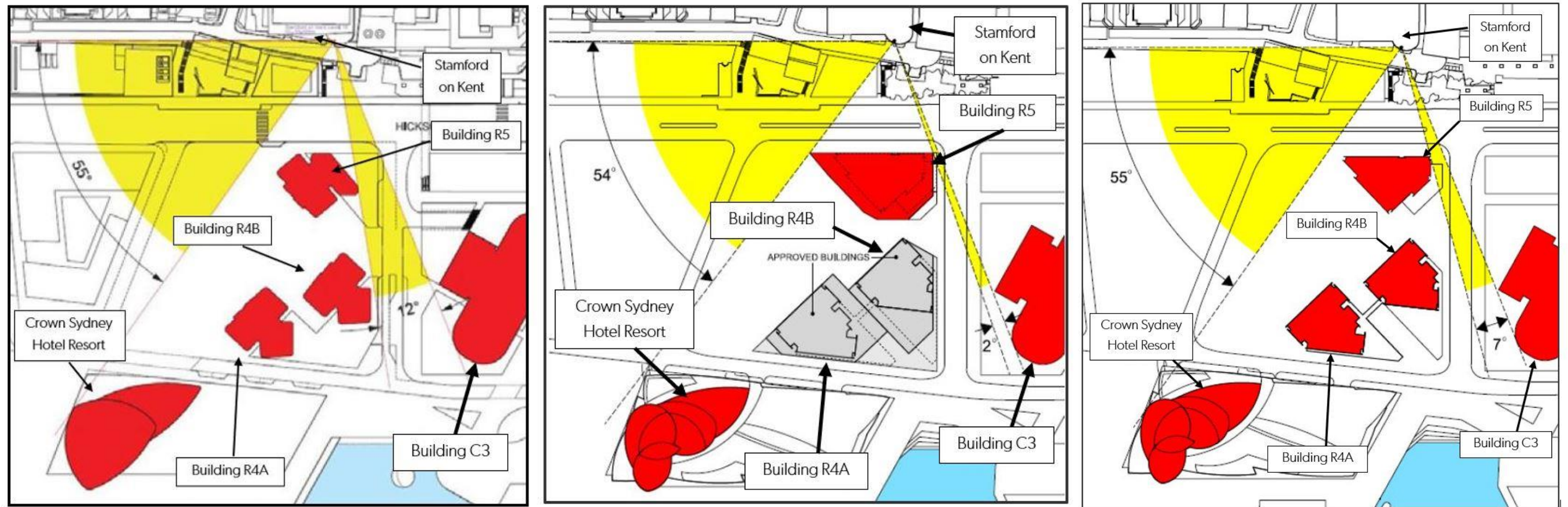



Figure 4 Building envelope compliance diagram

Source: Renzo Piano Building Workshop and Lendlease Applied Insight. Red annotates the Concept Plan Block 4B Envelope Controls



Stamford on Kent example of view angle calculation of indicative (**left**) and, approved maximum (**middle**) Concept Plan building envelopes, and proposed (**right**) building envelopes



Study Point 

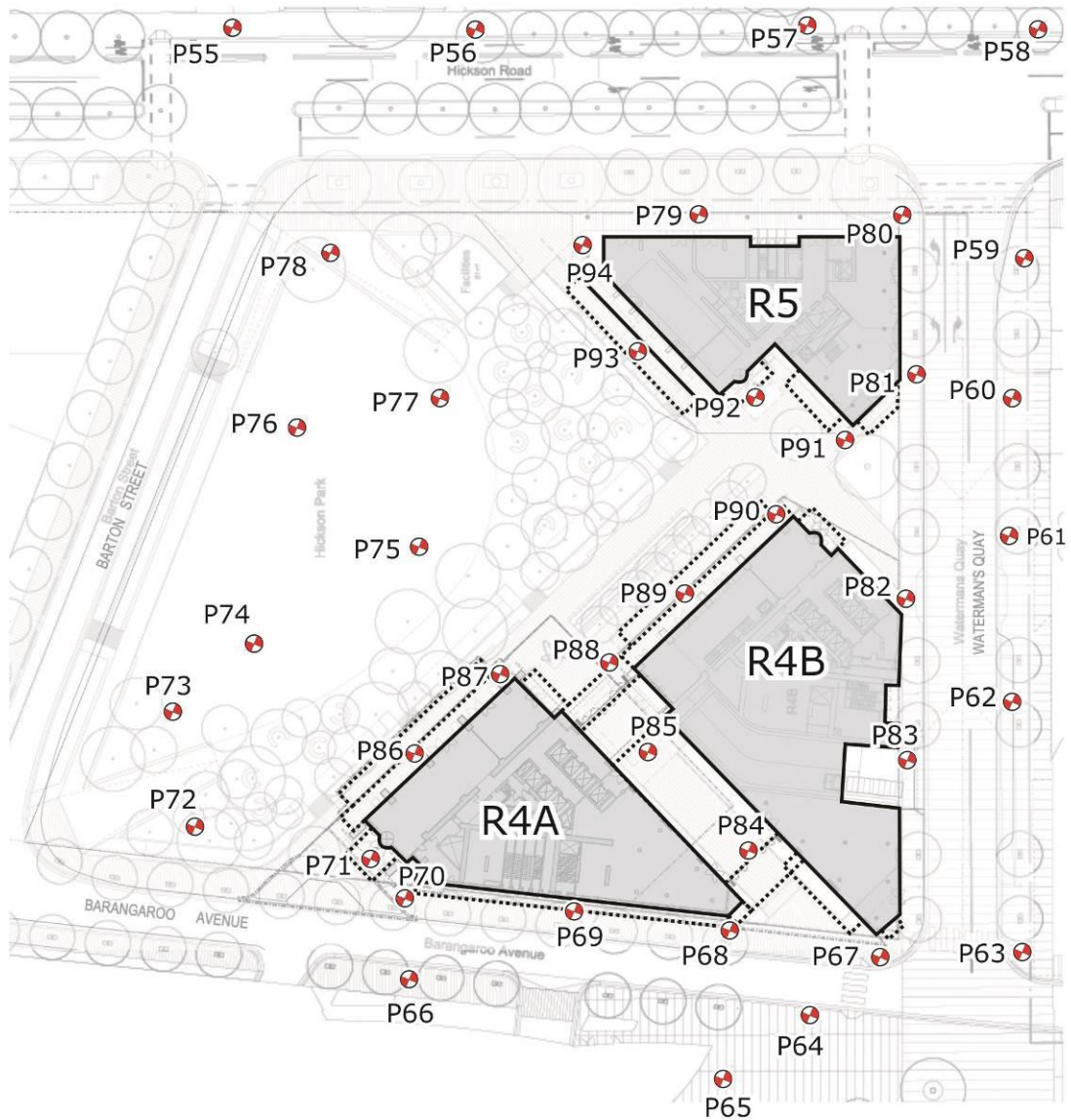
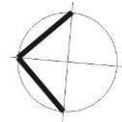


Figure 5a: Study Point Locations – Ground Level



Treatments Legend



Proposed trees should be evergreen, similar to the *Harpullia Pendula*, which typically has a height of 7-10m with a 3-6m wide canopy.



Inclusion of portable café screening to be controlled by the operator to provide suitable conditions for patrons during adverse wind conditions. Conditions will be suitable as a pedestrian thoroughfare when the café area is not in operation.

Figure 6: Suggested Treatments for Ground Level – Scenarios 1 and 2

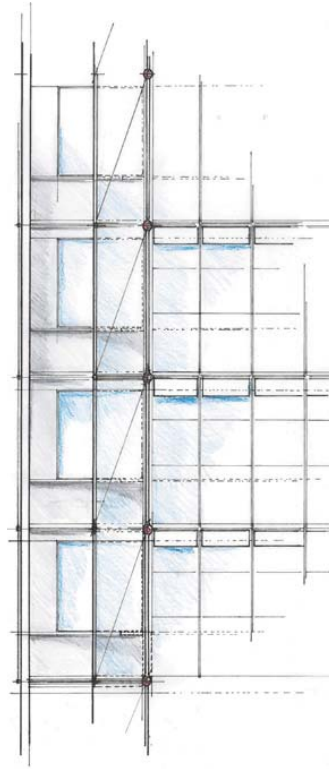
2.5 Façade Refinements

The R5 façades are characterized by a homogeneous look that strives to minimize the differentiation between the enclosed living zones and the open balconies.

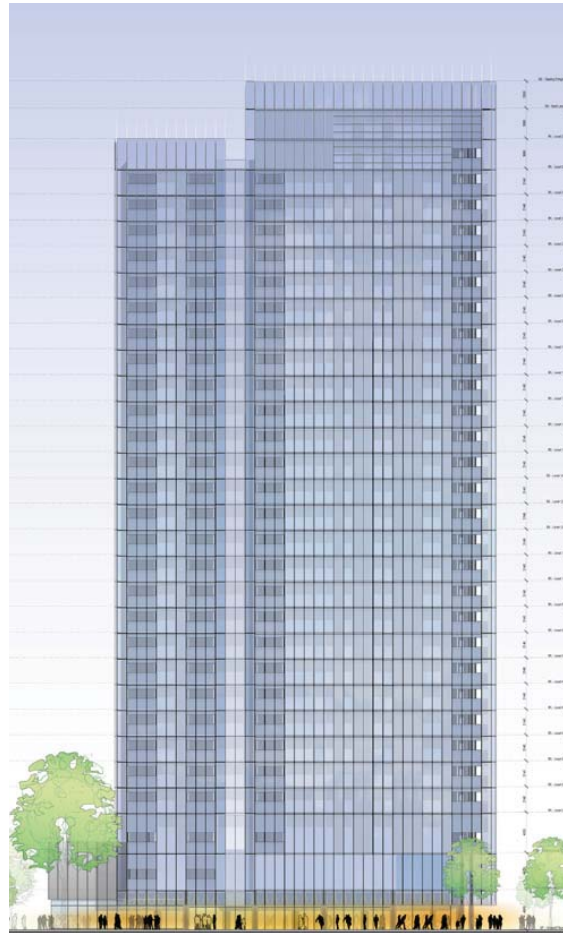
The façade typologies of the tower R5 are similar to the types at R4A and R4B:

- Balcony
- Open Cavity Façade
- Closed Cavity Façade
- Double Glass Unit
- Louvred Metal Cladding
- GRC Opaque Façade
- Notch
- Skirt, Fringe and Wing

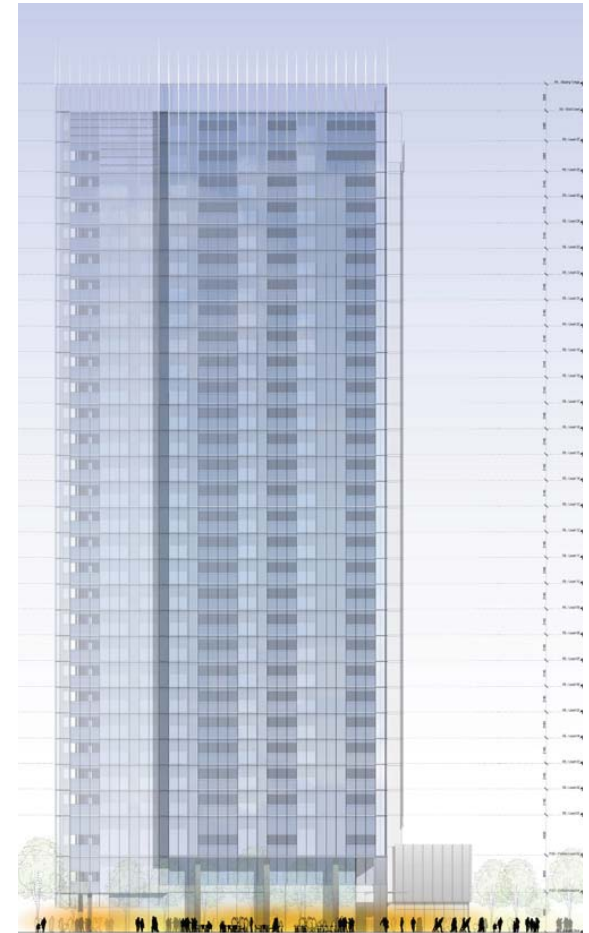
There is a consistency in façade systems in R4A, R4B and R5 also at podium level.



Façade Wing Sketch



R5 East Façade



R5 North West Façade

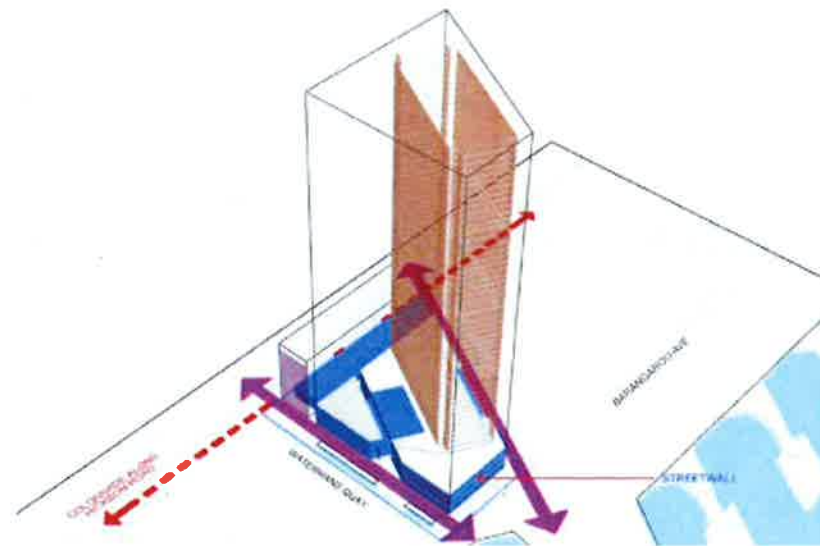
2.4.2 Street Wall Establishment _ Control 2

Objectives:

- _ To establish spaces to articulate and define facades
- _ Building mass at podium to form a continuous Street Wall with a minimum predominant podium height of 3 storeys
- _ Street Wall to define Barangaroo Avenue
- _ Podium height shall be determined having regard to compatibility of streetscape form with the surrounding area, and appropriate engagement and framing of the public domain, together with environmental considerations on the public domain and surrounding buildings

C1 continues the colonnade thoroughfare initiated with C2 along the western alignment of Hickson Road, providing direct pedestrian access along a north south path from Hickson Place towards Headland Park. As such, the colonnade will contribute to an active and connected undercover edge to the eastern extent of Barangaroo South.

Similar height facades and the continued use of an expressed engineered mass timber structure further reinforces the Hickson Road street wall and provides a uniform streetscape expression across both C1 and C2, delivering an appropriate grand boulevard character along Hickson Road.



Urban Design Control 2 Diagram
_ Street Wall Establishment



Hickson Road Street Wall

- DA site boundary
- Building envelope boundary
- 1 Porphyry paving
- 2 Granite paving (CoS standard)
- 3 Stage 1B Basement entry (Refer to Basement DA)



