



Record of site inspection



New South Wales Government
Independent Planning Commission

Project:	Deniliquin BESS (SSD-72258210)	
Meeting location:	The project site at 21541 Riverina Highway, Deniliquin	
Date:	3 December 2025	
Time:	2:00pm – 3:00pm	
ATTENDEES		
Commissioners:	Michael Wright Bronwyn Evans	Panel Chair Panel Member
Office of the IPC:	Kendall Clydsdale Geoff Kwok	Principal Case Manager Senior Planning Officer
Applicant:	Tom Lukins	Development Manager, Avenis Energy
Observers:	Maddison Gunter	Planning Officer, Edward River Council
KEY OBSERVATIONS		
<ul style="list-style-type: none">• Observed the borrow pit location and view east towards Aratula South Road• Walked along the PCT20 woodland boundary to observe vegetation characteristics• Viewed the proposed grid connection point – Option 2 (construction of a new substation bay) and the proposed cable route• Viewed the proposed grid connection point – Option 1 (utilising the existing the existing substation bay) and the associated cable route• Inspected the proposed site access point and surrounding road interface <p>Photographs taken by Office of the IPC. Maps provided by the Applicant.</p>		
Meeting closed at: 3:00pm		
PHOTOGRAPHS		
<div></div>		

Office of the Independent Planning Commission

Phone: (02) 9383 2100
Email: ipcn@ipcn.nsw.gov.au

Level 15, 135 King Street
Sydney, NSW, 2000

Record of site inspection



New South Wales Government
Independent Planning Commission



Site access and meeting point



Office of the Independent Planning Commission

Phone: (02) 9383 2100
Email: ipcn@ipcn.nsw.gov.au

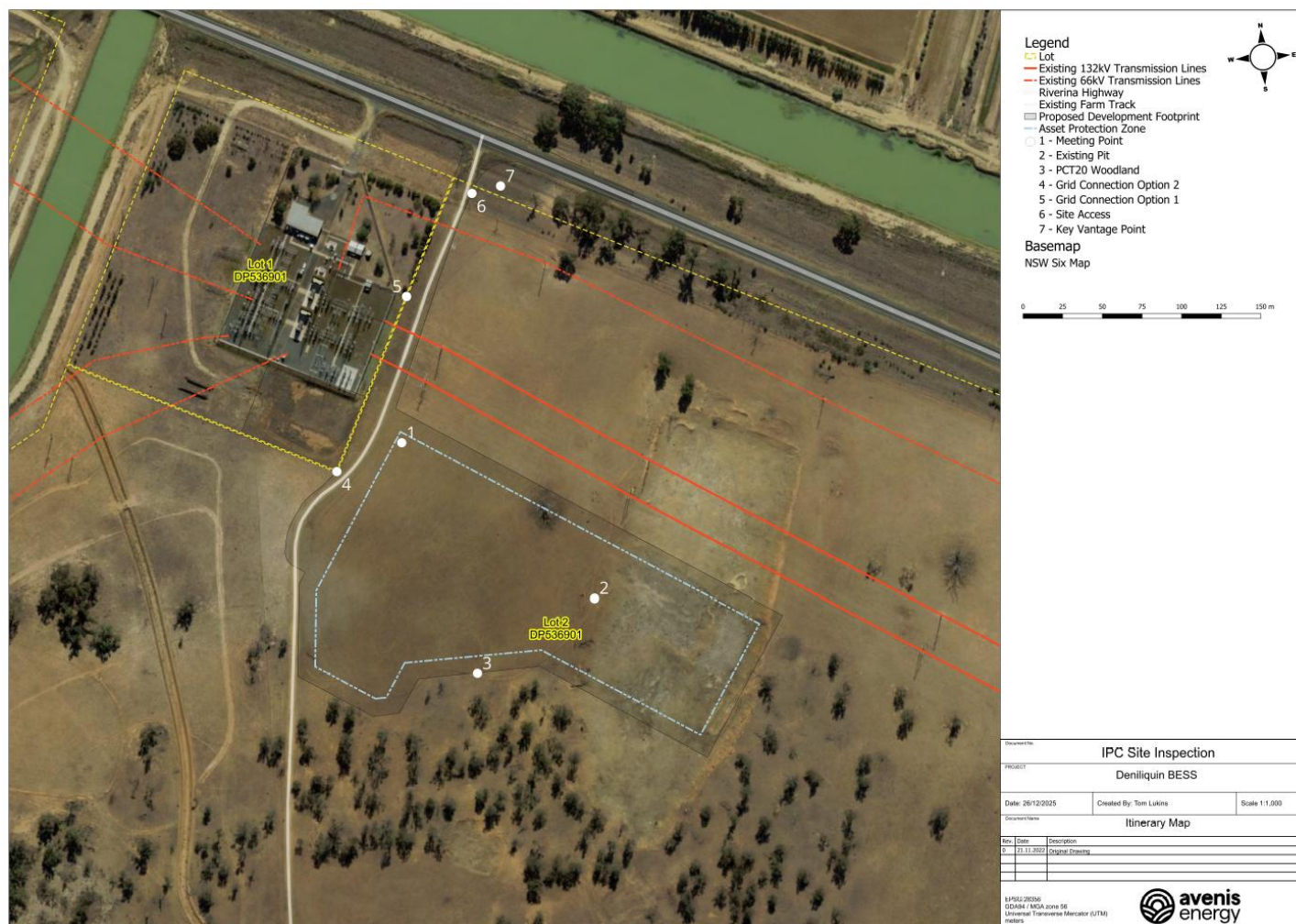
Level 15, 135 King Street
Sydney, NSW, 2000

Record of site inspection



New South Wales Government
Independent Planning Commission

Site inspection map



Office of the Independent Planning Commission

Phone: (02) 9383 2100
Email: ipcn@ipcn.nsw.gov.au

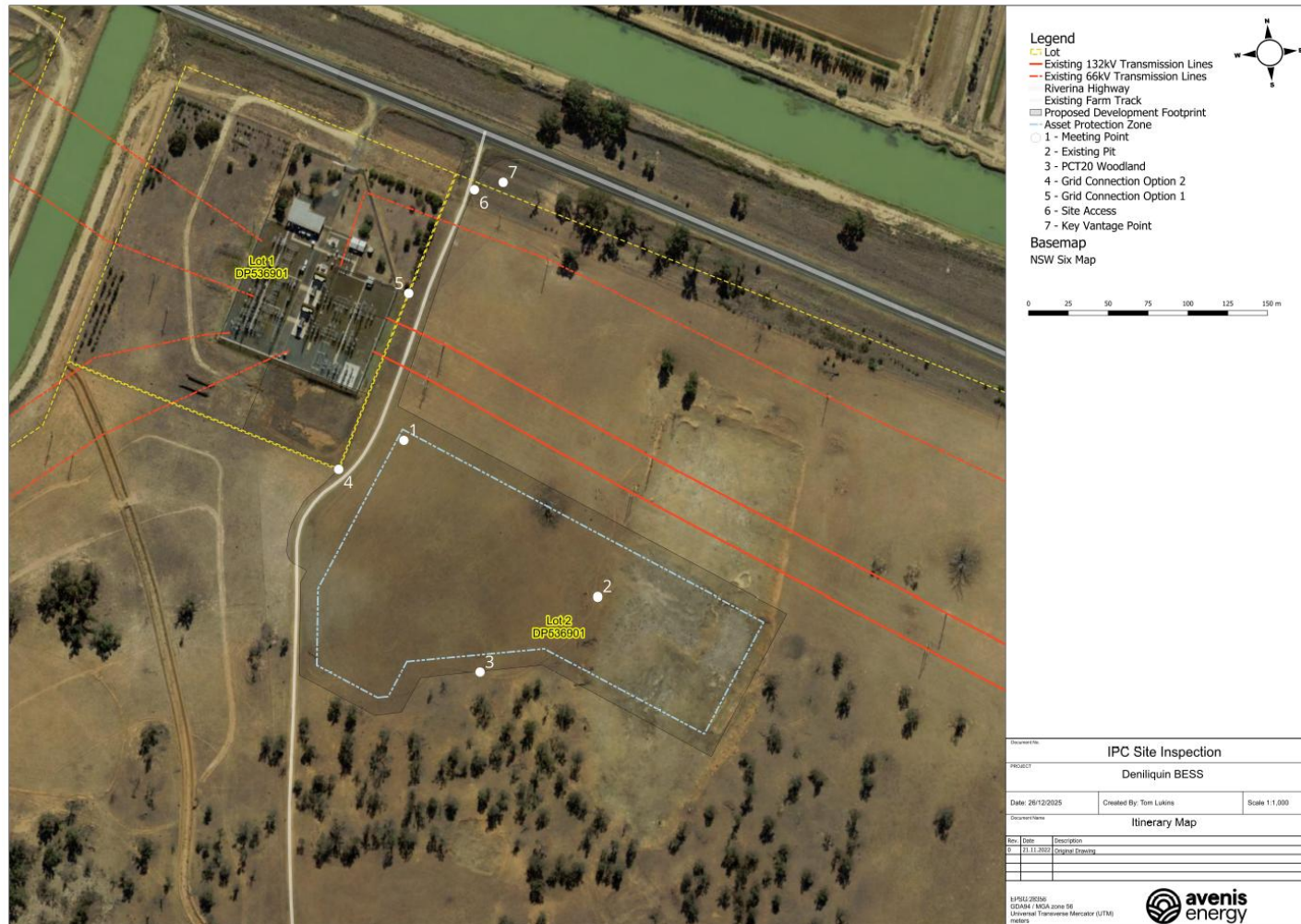
Level 15, 135 King Street
Sydney, NSW, 2000

Record of site inspection



New South Wales Government
Independent Planning Commission

Nearby receivers map



Office of the Independent Planning Commission

Phone: (02) 9383 2100
Email: ipcn@ipcn.nsw.gov.au

Level 15, 135 King Street
Sydney, NSW, 2000

Record of site inspection



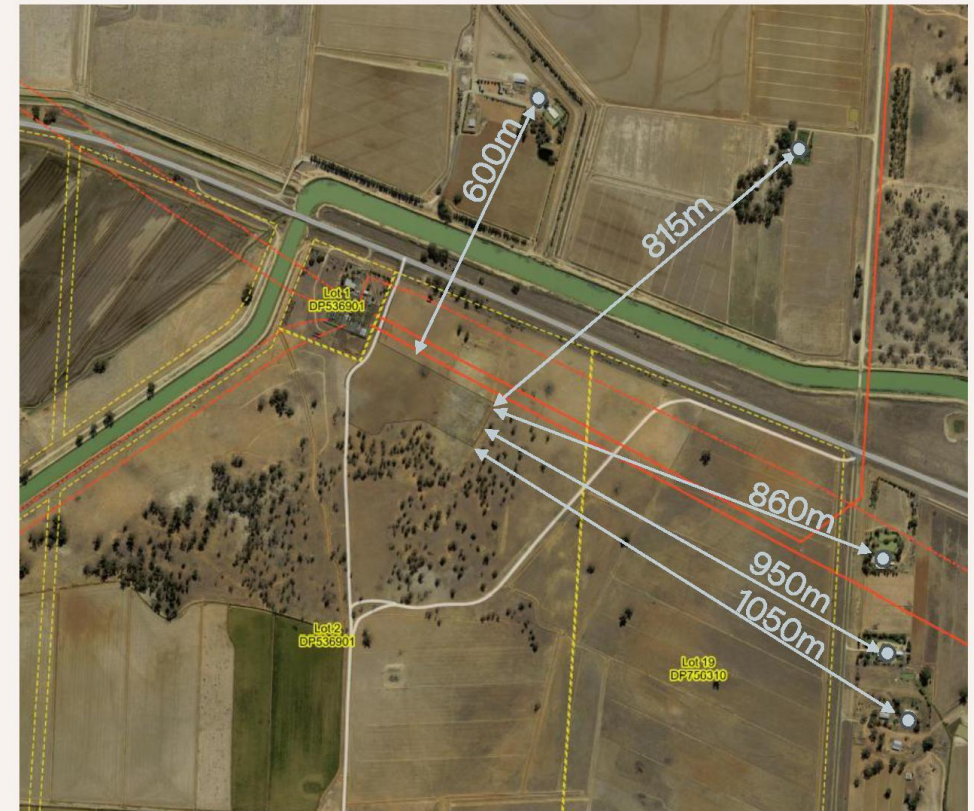
New South Wales Government
Independent Planning Commission

Additional maps

PCT20 Woodland Buffer



Near Receivers Map



Office of the Independent Planning Commission

Phone: (02) 9383 2100
Email: ipcn@ipcn.nsw.gov.au

Level 15, 135 King Street
Sydney, NSW, 2000