

Pottinger Energy Park

Independent Planning Commission public meetings

4 & 5 June 2025



Acknowledgement of Country

Someva and AGL acknowledge the Traditional Custodians of all the lands and waters upon which we work, live and play.

We would like to acknowledge and respect the traditions of the Wamba Wamba, Perrepa Perrepa, Nari Nari and Wiradjuri peoples and respect their continued special relationship with the land and waters of the area that Pottinger Wind Farm is proposed.

We pay our respects to Elders past and present.

Artwork – 'EMUS' by local artist Marbie.



Project Overview



Wednesday November 29, 2023

The Riverine Grazier - 11

Blast from the Past

Manny Pottinger honoured in project naming

The information used to create this article was sourced from the website of Liesl Malan Landscape Artists, Edward River Council website, and Someva Website.

Manny Pottinger, an icon of Conargo Shire and surrounding districts, has been honoured in a renewable energy project.

Someva Renewables, a specialist renewable energy developer operating in Australia, has named its local project, Pottinger Energy Park.

Someva quotes on its website interesting views of the time windmills were new technology. 'Without this vision to embrace a new technology of the time it would have been little short of murder to turn sheep loose into those paddocks' - Terry McGoverne, the Wool Barons.

It is a touching connection and acknowledgment of the area in which the project is occurring, to name their local project Pottinger after the Pottinger family and the district windmill prodigy Manny Pottinger, who over two generations, installed and maintained windmills in the region from the early 1900s till 1982.

Pottinger Park in Conargo provides a history of the windmill in the region and its importance to growing the Merino industry.

This strong history demonstrates the impor-

ance of Manny Pottinger in supporting livelihoods in the region and how it will continue through the proposed Pottinger Energy Park.

Manny's real name was Lionel, but he preferred to go by Manny.

A quiet modest man, who went about his business with a minimum of fuss, his windmill repair skills were known throughout the Riverina.

Manny was working for the Falkiner family at Zara station, when Les Falkiner said to him, 'You want to get yourself a utility. I'll keep you in work'. So, Manny bought a Chevrolet in 1927 for 205 pounds.

He remained with the Falkiner family for 20 years, before going out on his own.

Manny started working on windmills in 1903, and continued to work on them almost until the day he died in 1986, at the age of 82.

Manny's great grandparents owned both the original Conargo Inn and the Billabong Hotel. In later years, his father closed the Conargo, and renamed the Billabong, The Conargo Hotel.

The peppercorn trees on the site were planted over a hundred years ago by Manny's mother Flora, outside the original Conargo Inn.

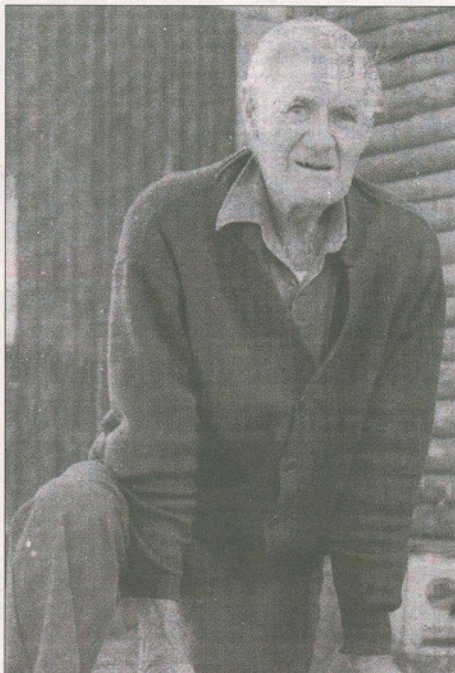
Manny and Jean Pottinger were married in 1927. They lived in the house near the Conargo Church for 58 years.

Manny and Jean were both widely known and respected.

They quietly got on with what was needed. Jean cared for the church most of her life. Manny restored the Drop Log stables, where he and a mate had once earned a shilling a week for rounding up horses for the stage coach journey between Jerilderie and Deniliquin.

Pottinger Park is the centre of Conargo Village, with the Store on one side and the old Conargo Pub site across the road.

The village sits on the crossroads of the original stock routes and has been a familiar intersection for regular travellers on the inland



Pottinger Energy Park

Overview



247

Wind Turbines



1,300

Megawatts of
clean energy



Battery
Power

500MW/2,000MWH



950

Jobs created
through construction
and operations



\$1.3m

Provided in community
benefits annually



830,000

Homes powered
by clean and
reliable energy

Pottinger Energy Park

Overview



Location	26,000 ha site in the locality of Boooroorban, 60km south of Hay, NSW Approximately 50/50 within Hay Shire Council and Edward River Council
Size	Up to 247 turbines and 500 MW / 2,000 MWh
Landowners	2 host landowners; 9 neighbours within 10km of the project with a Neighbour Benefit Program in place
Land use	Broad-acre open grazing context
Benefits	<p>Voluntary Planning Agreement terms agreed with local Councils, in line with new NSW Wind Guidelines of \$1,050 / MW per annum</p> <p>Dedicated First Nations Fund</p> <p>South West Renewable Energy Zone - \$2,300 / MW per annum for community and employment services</p> <p>Nine MOUs with local community and First Nations groups in a dedicated \$500,000 preconstruction community fund</p>
Connection	<p>Project is wholly within the South West Renewable Energy Zone</p> <p>Connection proposed into 330kV Project EnergyConnect (PEC)</p>



Pottinger Energy Park

Community Engagement

Engagement Data

220+

community members engaged with over past 12 months



62+

local organisations engaged

197+

business registered as interested suppliers



2,000+

unique interactions with locals over the past 12 months

4,500+

project page views on the Industry Capability Network (ICN)



22

work packages listed on the ICN Gateway

605+

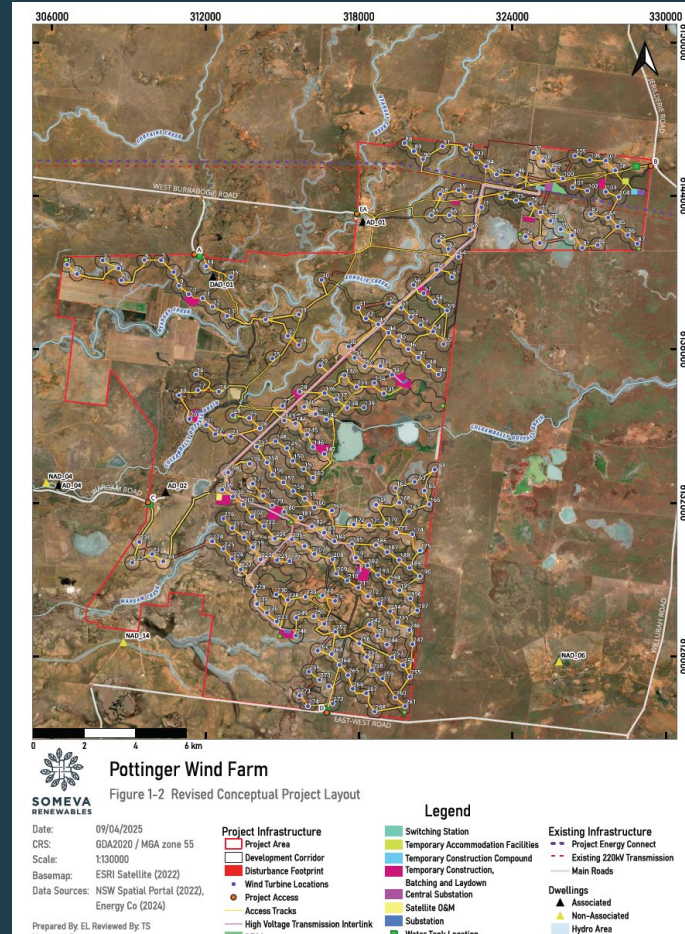
expressions of interest to work packages



Pottinger Energy Park

Project Design Changes

- Layout refined after EIS consultation – with 6 turbines removed
- High value agricultural land protected
- Culturally sensitive sites protected



Pottinger Energy Park

Key Themes from community and stakeholder engagement



1. Biodiversity including Plains Wanderer protection
2. Protection of high value agricultural land
3. Aboriginal cultural heritage
4. Visual impact of turbines
5. Housing and accommodation
6. Roads and transport

Pottinger Energy Park

Project Design Changes

Biodiversity

- Substantial efforts to avoid and minimise biodiversity impacts have been undertaken through design changes during Scoping Report, Environmental Impact Statement, Response to Submissions, and final RFI phases of the Project. Detailed in the BDAR.
- Particular effort has focused on reducing impacts to Plains Wanderer (at risk of SAIL) Important Mapped Habitat. Nature positive commitment to offset Plains Wanderer habitat.
- Biodiversity offset strategy has commenced, seeking to offset impacts through nearby biodiversity stewardship sites.

Example design changes.
Source: BDAR (March 2025)



Plate 62 EIS infrastructure between WTG 270 and WTG 271 proposed for removal.



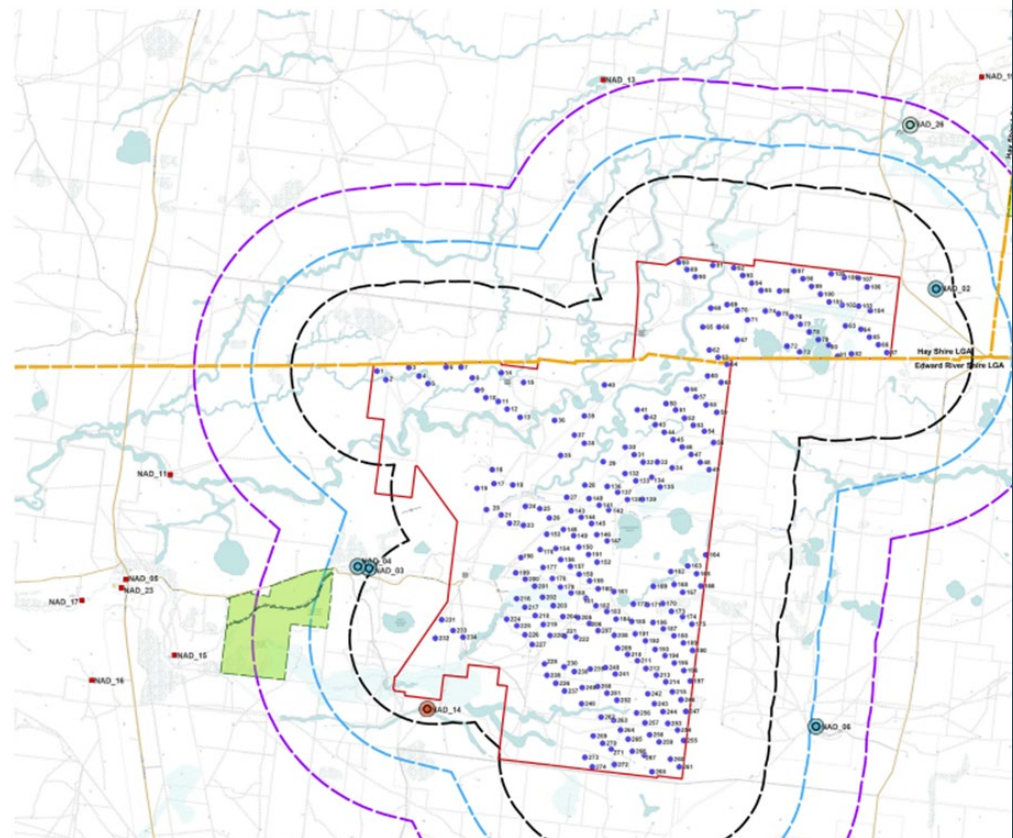
Plate 63 Amendment of infrastructure between WTG 270 and WTG 271 to avoid and minimise impacts to mapped Plains Wanderer habitat.

Pottinger Energy Park

Project Design Changes

How we have addressed impacts

1. Site selection chosen with landowners that have mixed agricultural use, with high value agricultural land avoided in the project footprint
2. Design changes to protect Aboriginal cultural heritage values
3. Turbines will be 10km from the Cobb Highway so visual impact is very low as verified by the independent visual consultant
4. Accommodation
 1. Temporary accommodation camp planned to reduce accommodation load in towns
 2. Legacy housing options being discussed with councils
5. Road upgrades in place prior to construction commencing



Community MOU Signing Ceremony

11 April 2024, Booroorban Hall



Pottinger Energy Park

Thank you



- Pottinger Energy Park has been developed in line with the NSW Wind Energy Guidelines
- Someva and AGL supports the NSW Department of Planning, Heritage and Infrastructure's assessment that this is an approvable project at 1.3 GW (247 wind turbines) and 500 MW / 2,000 MWh
- We have welcomed strong collaboration and support from councils and community
- We have responded to community and stakeholder feedback and modified the project design
- We look forward to ongoing engagement through the life of the project



somevarenewables.com.au/Pottinger
community@someva.com.au

