

# Record of site inspection



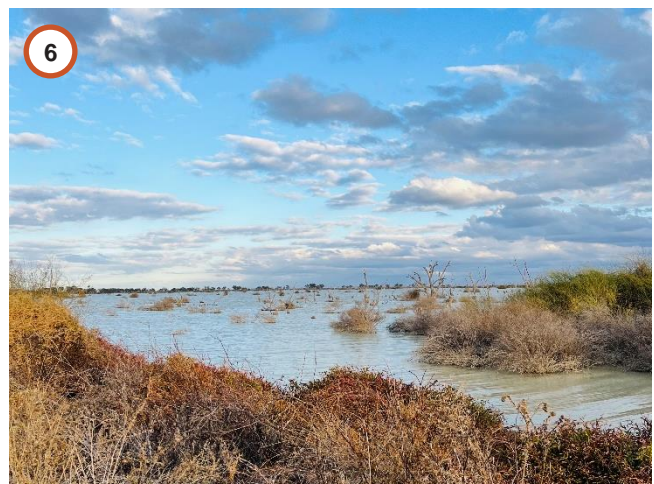
New South Wales Government  
Independent Planning Commission

Projects:	Pottinger Wind Farm (SSD-59235464)	
Meeting location:	The project site and surrounding area, including Hay	
Date:	3 June 2025	
Time:	1:00pm – 5:00pm	
ATTENDEES		
Commissioners:	Richard Pearson Michael Wright Sarah Dinning	Panel Chair
Office of the IPC:	Steve Barry Geoff Kwok	Planning Director Senior Planning Officer
Applicant:	Tim Mead James Nicholas Han Tay Derek Powell Jon Ambler	Development Director, Someva Renewables Development Manager, Someva Renewables Project Director, AGL Energy Project Director, AGL Energy Group Manager Power Development, AGL Energy
Local Council Representatives:	Alison McLean  Maddison Gunter	Executive Manager – Economic Development and Tourism, Hay Shire Council Planning Officer, Edward River Council
LOCATIONS AND KEY OBSERVATIONS		
<p>Locations below align with the photos (taken by the IPC during the site inspection) and maps (provided by the Applicant and annotated by the IPC) on the following pages.</p> <p><b>S. Start point</b> Met Applicant and Council representatives near Hay tennis courts along Lachlan Street. Panel Chair delivered opening statement.</p> <p><b>1. Corner of Cobb Highway and Jerilderie Road</b> Observed the location of the existing intersection where road upgrades as part of the project are proposed.</p> <p><b>2. Site access point B</b> Observed the surrounds at the location of the eastern site entrance along Jerilderie Road.</p> <p><b>3. Temporary accommodation camp</b> Viewed the location of the proposed temporary accommodation camp.</p> <p><b>4. BESS location</b> Observed the location of the proposed BESS, substation and connection to the future EnergyConnect transmission line.</p> <p><b>5. Location 1 of plains wanderer habitat</b> Viewed the location and surrounds of a key location containing mapped plains wanderer habitat.</p> <p><b>6. Werkenbergal Swamp</b> Observed location of the Werkenbergal Swamp which provides habitat for waterbirds and raptors.</p> <p><b>7. Location 2 of plains wanderer habitat</b> Viewed the location and surrounds of a key location containing mapped plains wanderer habitat.</p> <p><b>E. End point</b> Concluded site inspection by exiting from access point C and driving along Wargam Road to Booorooban.</p>		
Meeting closed at: 5:00pm		

# Record of site inspection



New South Wales Government  
Independent Planning Commission



Office of the Independent Planning Commission

Phone: (02) 9383 2100  
Email: [ipcn@ipcn.nsw.gov.au](mailto:ipcn@ipcn.nsw.gov.au)

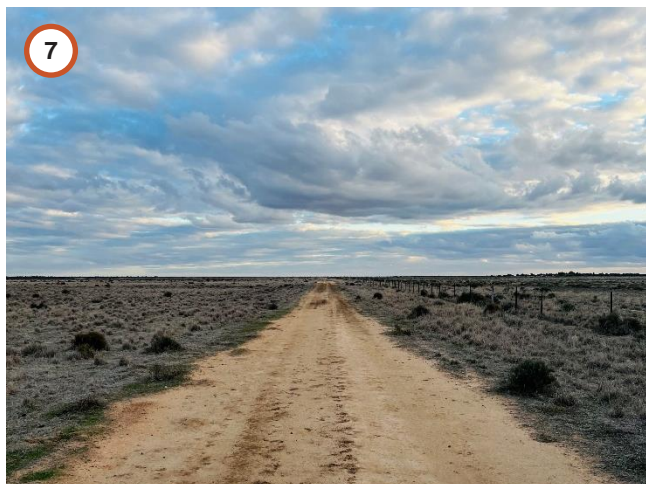
Level 15, 135 King Street  
Sydney, NSW, 2000



# Record of site inspection



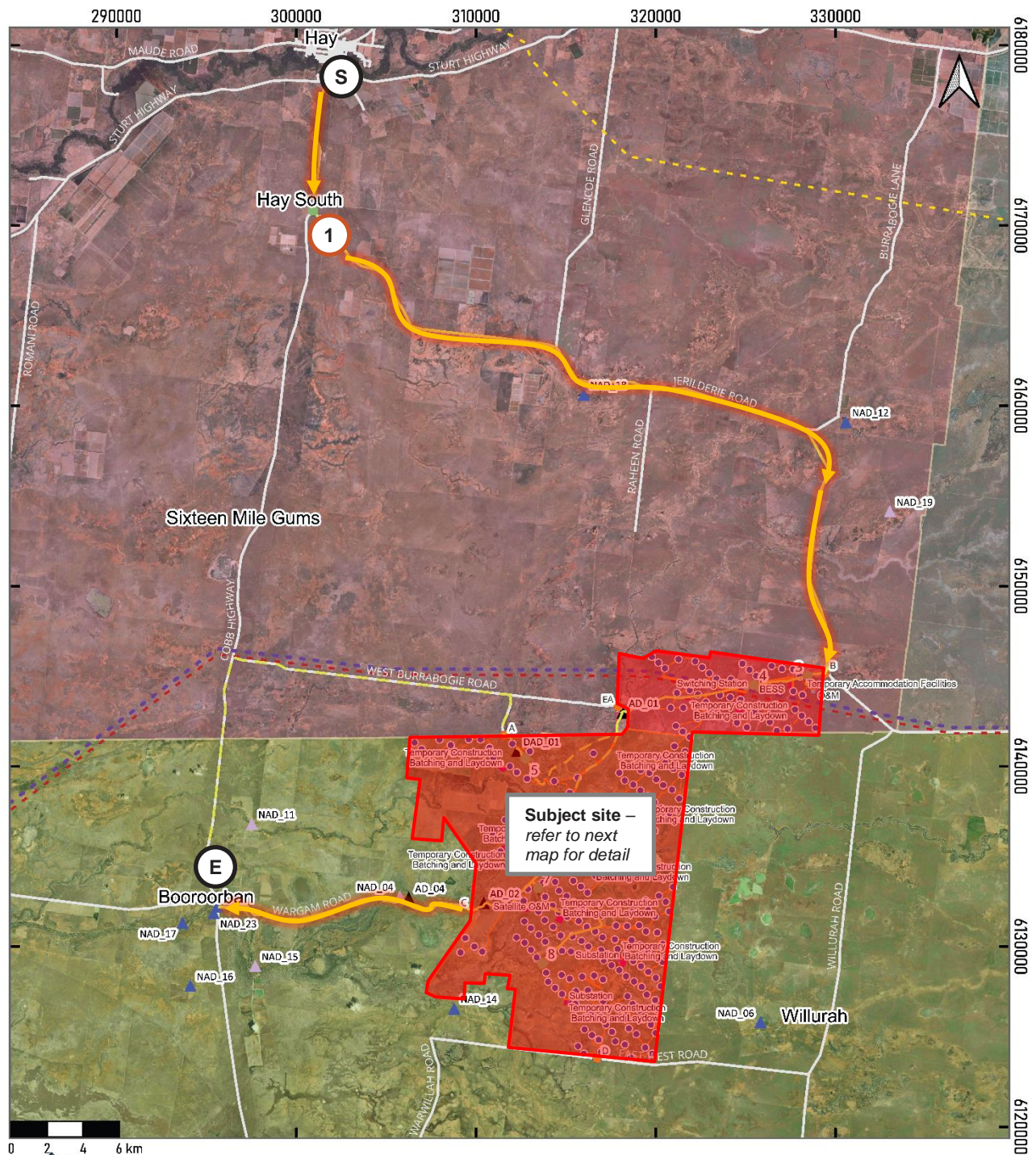
New South Wales Government  
Independent Planning Commission



# Record of site inspection



New South Wales Government  
Independent Planning Commission



Date: 30/05/2025  
CRS: GDA2020 / MGA zone 55  
Scale: 1:286567  
Basemap: ESRI Satellite (2024)  
Data Sources: NSW Spatial Portal (2022),  
Energy Co (2024)

Prepared By: TS  
Version: 1.1  
This figure may contain third party information.  
This figure is provided for information purposes  
only and may not be to scale.

## Pottinger Wind Farm

IPC - Applicant Stakeholder Meeting and Site Inspection  
Suggested Overview

**Project Infrastructure**  
Project Area  
Project Access Points  
WTG Locations  
Existing Access Tracks  
Proposed Access Tracks

**Ancillary Infrastructure**  
BESS  
O&M  
Switching Station  
Temporary Accommodation Facilities  
Temporary Construction Compound

**Legend**  
Temporary Construction, Batching and Laydown  
Central Substation  
Satellite O&M  
Substation  
Existing Infrastructure  
Main Roads  
Project Energy Connect  
132kV Existing Transmission  
220kV Existing Transmission

**LGA**  
EDWARD RIVER LGA  
HAY LGA  
MURRUMBIDGEE LGA

**Neighbouring Receivers**  
Associated  
Non-Associated  
Non-Associated  
(Associated with other project)

**Suggested Route and Itinerary**  
Key Locations  
Options  
Suggested Route



# Record of site inspection



New South Wales Government  
Independent Planning Commission



## Pottinger Wind Farm

IPC - Applicant Stakeholder Meeting and  
Site Inspection

### Key Site Locations

Date: 30/05/2025  
CRS: GDA2020 / MGA zone 55  
Scale: 1:82645  
Basemap: ESRI Satellite (2024)  
Data Sources: NSW Spatial Portal (2024)

### Legend

#### Project Infrastructure

- Project Area
- Project Access Points
- WTG Locations
- Existing Access Tracks
- Proposed Access Tracks

#### Ancillary Infrastructure

- BESS
- OSM
- Switching Station
- Temporary Accommodation Facilities
- Temporary Construction Compound
- Temporary Construction, Batching and Laydown
- Central Substation
- Satellite OSM
- Substation

#### Existing Infrastructure

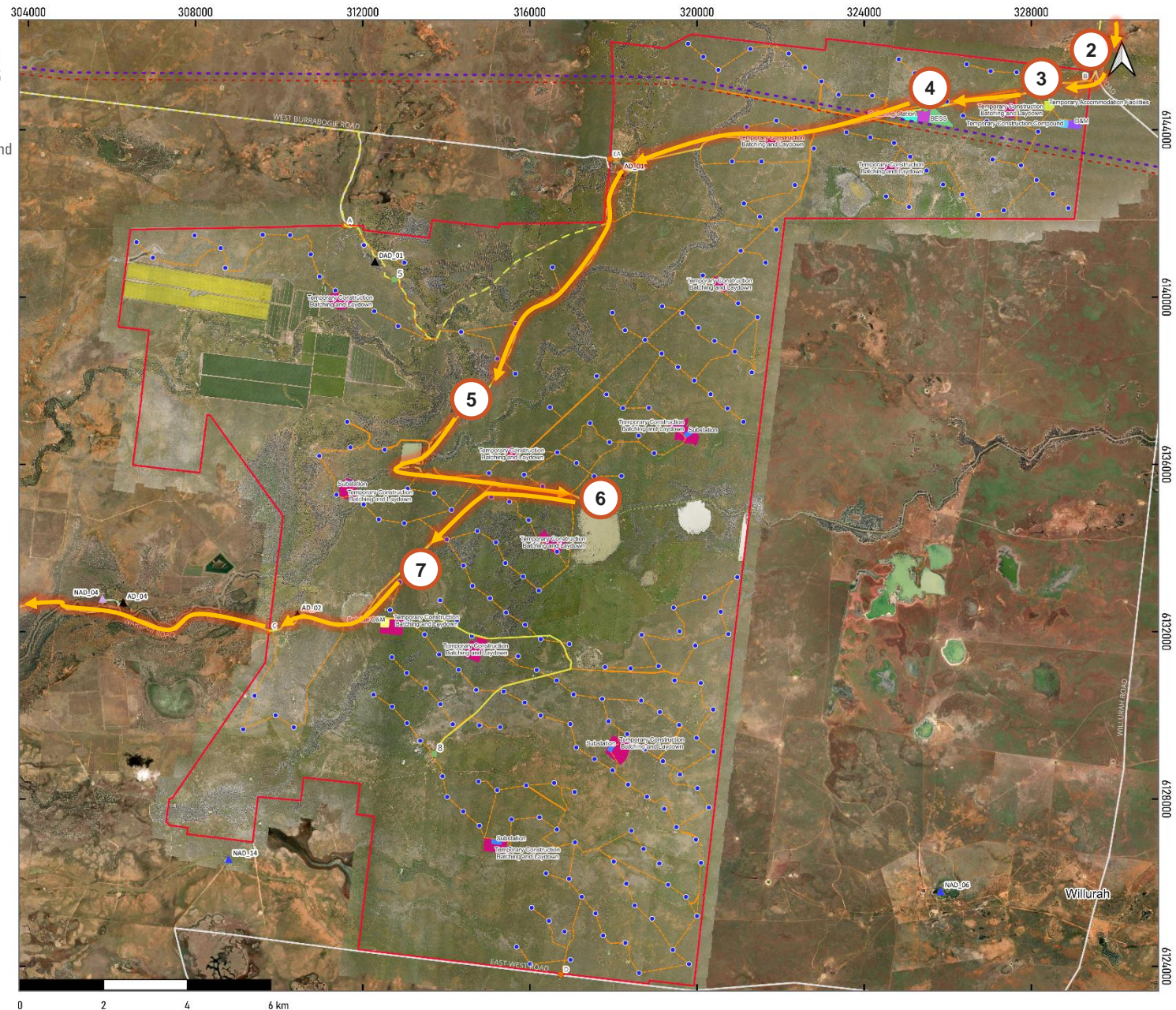
- Main Roads
- Project Energy Connect
- 220kV Existing Transmission

#### Neighbouring Receivers

- Associated
- Non-Associated
- Non-Associated (Associated with other project)

#### Suggested Route and Itinerary

- Key Locations
- Options
- Suggested Route



Prepared By: TS

Version: 1.1

This figure may be based on third party data or data which has not been verified by Someva Renewables. The figure may not be to scale and is provided for information purposes only.