

Record of site inspection



New South Wales Government
Independent Planning Commission

SITE INSPECTION NOTES		
Project:	Harbourside Shopping Centre Redevelopment - Public Domain and Bridges (SSD-49653211)	
Meeting location:	The project site and surrounding area	
Date:	Wednesday, 21 May 2025	
Time:	10:30am – 12:00pm	
ATTENDEES		
Commissioners:	Andrew Mills Shelley Penn AM Richard Pearson	Commission and Panel Chair Commission and Panel Member Commission and Panel Member
Office of the IPC:	Kendall Clydsdale Tahlia Hutchinson	Principal Case Manager Senior Planning Officer
Applicant:	Alexis Cella Andrew Tobin Andrew Colangelo Oliver Maxwell Sam Westlake	Director – Planning, Ethos Urban Development Director, Mirvac Project Director, Mirvac Development Manager, Mirvac Senior Associate, Hassell
LOCATIONS AND KEY OBSERVATIONS (Refer to Site Inspection Map)		
<ul style="list-style-type: none"> • Location 1 <ul style="list-style-type: none"> • Opening statement by Panel Chair • Panel observed the current construction of the earlier stages of Harbourside Redevelopment Project • Panel observed the interface with the International Convention Centre, the Sofitel Hotel and the waterfront • Location 2 <ul style="list-style-type: none"> • Panel observed the location of the proposed Waterfront Promenade and South Walk link • Panel observed the proposed setbacks to the waterfront • Location 3 <ul style="list-style-type: none"> • Panel observed the location of the proposed North Walk link • Panel observed the proposed setbacks to the waterfront traversing around the waterfront to the north • Location 4 <ul style="list-style-type: none"> • Panel observed the location of the proposed Waterfront Steps • Location 5 <ul style="list-style-type: none"> • Panel observed the setback to Pyrmont Bridge • Panel observed the interface on ground level (Waterfront Promenade) with the built form and Pyrmont Bridge • Location 6 <ul style="list-style-type: none"> • Panel observed the site from Level 2 of the existing built form currently under construction • Panel observed the location and size of the proposed Waterfront Garden • Panel observed the interface of the Waterfront Garden site with 'One Darling Harbour' (residential development) and the North Bridge • Panel observed the location of the proposed Bunn Street Bridge connection point • Location 7 <ul style="list-style-type: none"> • Panel observed the interface of the Waterfront Garden site and Pyrmont Bridge • Panel observed the height of the proposed Waterfront Garden • Location 8 <ul style="list-style-type: none"> • Panel observed the location of the proposed Bunn Street Bridge and stairs • Location 9 <ul style="list-style-type: none"> • Panel observed the location of the existing North Bridge • Panel observed the interface of the North Bridge and Waterfront Garden with 'One Darling Harbour' 		
Meeting closed at: 12pm		

Office of the Independent Planning Commission

Phone: (02) 9383 2100
Email: ipcn@ipcn.nsw.gov.au

Level 15, 135 King Street
Sydney, NSW, 2000

Record of site inspection



New South Wales Government
Independent Planning Commission

SITE INSPECTION MAP



Note: Location 7 was revised during the inspection to the West as indicated.

Record of site inspection



New South Wales Government
Independent Planning Commission

SITE INSPECTION PHOTOS

Figure 1 – Location 1



Figure 2 – Location 2



Figure 3 – Location 3

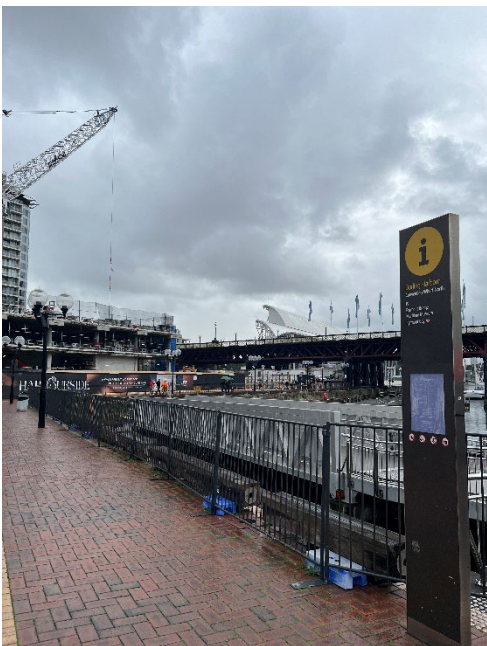


Figure 4 – Location 4



Record of site inspection



New South Wales Government
Independent Planning Commission

Figure 5 – Location 5



Figure 6 – Location 6



Figure 7 – Location 8



Figure 8 – Location 9

