

Modification of Development Consent

Section 4.55(2) of the *Environmental Planning and Assessment Act 1979*

As delegate of the Minister for Planning and Public Spaces, the Independent Planning Commission approves the modification of the development consent referred to in Schedule 1, subject to the conditions in Schedule 2.

Sydney

2025

SCHEDULE 1

The development consent (SSD-5145) for the Northern Coal Services Project, granted by a delegate of the Minister for Planning, on 29 September 2015.

SCHEDULE 2

1. In the list of DEFINITIONS, delete “BCD”, “Department” and “EIS” and their associated definitions, and insert the following in alphabetic order:

CPHR	Conservation Programs, Heritage and Regulation Group
CWR	Coal washery reject as defined under the <i>Coal Washery Rejects Order & Exemption 2014</i> (EPA, 2014)
Department	Department of Planning, Housing and Infrastructure
EIS	Project application SSD-5145 and supporting documentation, including Environmental Impact Statement titled Northern Coal Logistics Project Environmental Impact Statement, dated September 2014; associated response to issues raised in submissions, titled Northern Coal Logistics Project Response to Submissions, dated February 2015; and additional information regarding residual concerns, titled Mandalong Southern Extension Project Response to RTS Report, dated April 2015, as amended by: <ul style="list-style-type: none">• Modification application SSD-5145 MOD 1 and supporting documentation, including Statement of Environmental Effects titled ‘Northern Coal Logistics Project Development Consent SSD-5145 Section 96(1A) Modification Statement of Environmental Effects’ dated October 2017, and the Response to Submissions titled RE: SSD-5145 MOD 1 Response to Submissions Letter Report dated 15 December 2017, all prepared by Centennial Coal Company Ltd• Modification application SSD-5145 MOD 3 and supporting documentation, including Modification Report titled “Centennial Administrative Modification to Align Development Consent Conditions with Contemporary Requirements under the Mining Act 1992” (dated 22 August 2022).• Modification application SSD-5145 MOD 5 and supporting documentation, including Modification Report titled “Modification Report for Modification 5 to SSD-5145 (MOD5)” dated September 2024; the Response to Submissions titled “SSD-5145 Modification 5 Response to Submissions Report” dated December 2024; and additional information dated 17 April 2025.

2. In condition 6(f) of Schedule 2, after “Eraring Power Station”, insert “and/or the CES”.
3. In condition 6(g) of Schedule 2, change “0.5” to “1”, and after “CES”, insert “, of which at least 90% of 0.5 million tonnes of which is to be transported via back haulage”.
4. After condition 8 of Schedule 2, insert:

CWR Transportation and Processing Operations

- 8A. The Applicant must transport CWR from the NCSS site:
- (a) to the EPS on the private haulage road:
 - with at least 90% to be via back haulage only;
 - to a maximum of 500,000 tonnes in any calendar year;
 - (b) to external customers on the designated transport route:
 - to a maximum of 250,000 tonnes in any calendar year;
 - to a maximum of 2,000 tonnes per day; and
 - using a maximum of:
 - 16 two-way truck movements (8 inbound / 8 outbound) during the AM peak period between 8:15am – 9:15am;
 - 6 two-way truck movements (3 inbound / 3 outbound) during the PM peak period between 3:45pm – 4:45pm;
 - 26 two-way truck movements (13 inbound / 13 outbound) per hour outside of the AM and PM peak periods.

Note: The private haulage road and designated transport route to be utilised for the transportation of CWR to external customers is shown in figure in Appendix 2A.

- 8B. The Applicant must comply with all the requirements of the *Coal Washery Rejects Order & Exemption 2014* (EPA, 2014) (including any update or revision of this order) prior to supplying any CWR to external customers.

Mobile Crushing and Screening Operations

- 8C. The Applicant must restrict mobile crushing and screening operations at the NCSS site to:
- (a) the locations shown in the figure in Appendix 2B; and
 - (b) no more than 20 weeks in any calendar year.

5. In condition 9 of Schedule 2, add the following row to Table 1:

Mobile crushing and screening operations	7.00 am to 5.00 pm on Monday to Saturday, and 8.00 am to 5.00 pm on Sunday and public holidays
--	--

6. After condition 14 of Schedule 2, insert:

CONTRIBUTION TO COUNCIL

15. The Applicant must make financial contributions to LMCC towards the maintenance of roads used for haulage of CWR products, where LMCC is the roads authority under the Roads Act 1993. The contributions and timing of payment must be determined in consultation with LMCC and in accordance with the LMCC local infrastructure contribution plan (including any updated or revised version of these plans) for local roads within the local government area.
16. If there is a dispute over the determination of the contributions in condition 15, the Applicant or the LMCC may refer the matter to the Planning Secretary for resolution. The decision of the Planning Secretary will be final.
7. In condition 5(c) of Schedule 3, after “consent”, insert “, including during the operation of the mobile crushing and screening plant at the NCSS”.
8. In condition 10 of Schedule 3, add the following note:
- Note: With the introduction of the EPA’s NSW Guide for Large Emitters, the Applicant will be required to prepare and implement a greenhouse gas mitigation plans in accordance with requirements provided by the EPA. On implementation, these plans could be referenced to meet the requirements of this condition in relation to greenhouse gas emissions.*
9. In condition 20 of Schedule 3, delete “Within 6 months of the approval of the Biodiversity Management Plan” and replace with “Prior to clearing any native vegetation associated with the Biodiversity Offset Strategy referred to in condition 18, Schedule 3”.
10. After condition 23 of Schedule 3, insert:

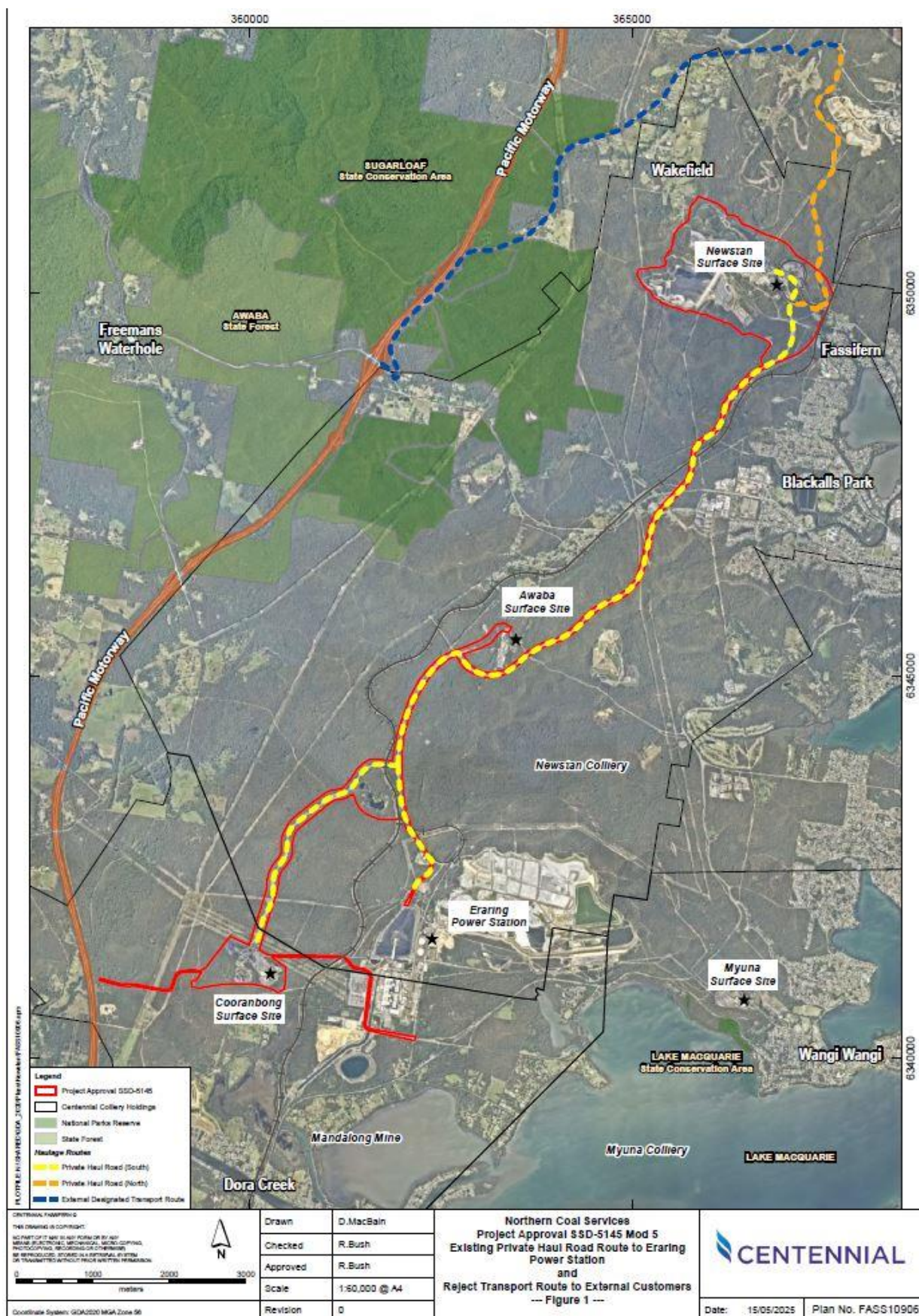
Traffic Management Plan

- 23A. The Applicant must prepare a Traffic Management Plan prior to transporting any CWR from the NCSS site, to the satisfaction of the Secretary. This plan must:
- (a) be prepared by suitably qualified and experienced person/s and in consultation with TfNSW and LMCC;
 - (b) include details of traffic management measures related to the transport of CWR to external customers, including:
 - the designated transport route to be used;
 - processes in place for the control of truck movements entering and exiting the site;
 - measures to be implemented to:
 - ensure compliance with the traffic operating conditions and other traffic related conditions of this consent;
 - manage the traffic impacts from contractors and subcontractors;
 - minimise traffic safety issues and disruption to local road users, including minimising potential for congestion at key intersections during peak periods;
 - minimise the transmission of dust and tracking of material onto the surface of public roads from vehicles exiting the site;
 - monitor driver behaviour; and
 - participate in transport management investigations initiated by LMCC;
 - (c) include a Drivers' Code of Conduct that includes procedures to ensure that drivers:
 - adhere to posted speed limits or other required travelling speeds;
 - adhere to designated transport routes and travel time restrictions;
 - adhere to driver behaviour expectations and safety requirements;
 - implement safe and quiet driving practices, including restriction on the use of compression braking;
 - describe the measures to be put in place to ensure compliance with the Drivers' Code of Conduct.

The Applicant must implement the approved Traffic Management Plan.

11. Insert the following at the end of Appendix 2:

APPENDIX 2A: LOCATION OF THE PRIVATE HAULAGE ROAD AND DESIGNATED TRANSPORT ROUTE TO BE UTILISED FOR THE SUPPLY OF CWR TO EXTERNAL CUSTOMERS



APPENDIX 2B: PERMITTED MOBILE CRUSHING AND SCREENING PLANT OPERATIONAL LOCATIONS AT THE NCSS



**End of modification
(SSD-5145 MOD 1)**

DRAFT