

**This submission is made without prejudice:**

**I live in the area sandwiched between the Tilt and ACEN projects.**

- The department's assessment report states that this project has reduced from 175 turbines to 131 turbines.

The Department considered this has *ticked the box* on cumulative impact.

- The EIS provided information on two whole new clusters: Mundroola and Eastern, that had been removed in consideration of cumulative impact.

***This is not true.***

**There were never going to be 175 turbines in this project, unless ACEN were allowed to compulsorily acquire the land.**

- The phantom Mundroola Cluster detailed in the EIS never existed.

Many in this so-called Cluster are existing land hosts for the TILT project. The remaining are fierce objectors, at least one of which has managed to reduce the TILT project by 8 turbines given the proximity to their boundary.

- The phantom Eastern Cluster has at least 13 turbines depicted for our property. There was never any chance of this.

Why would we destroy the use of our airstrip, destroy our beautiful timbered hill tops, render the largest water source in the district unusable by helicopters during a fire, and make our homes unliveable for us and the many Wedge tail eagles that live in this area?

- The remaining turbines depicted in the Eastern Cluster are consistent objectors to the project. Just look at the speakers list and the people in the room on the day of the Independent Planning Commission meeting.
- Could it be that ACEN invented these clusters to remove them to appear to have addressed cumulative impact?
- The Department has been advised on numerous occasions, via email, that these two clusters were imagined by ACEN.

See image below:



Figure 2-4 | Project refinements

- If necessary we could supply statutory declarations from the landowners in these areas definitively proving that these land owners never consulted with ACEN with the plan to host turbines and these were phantom clusters.
- Roughly 20 years ago, when Wind Lab was circling the landowners in the district, many in the district accepted the offer of a bus ride and overnight accommodation to view the Lake George Turbines. Following this excursion two groups of landowners emerged – those

who thought hosting turbines was a great idea and those who thought it was a disastrous idea.

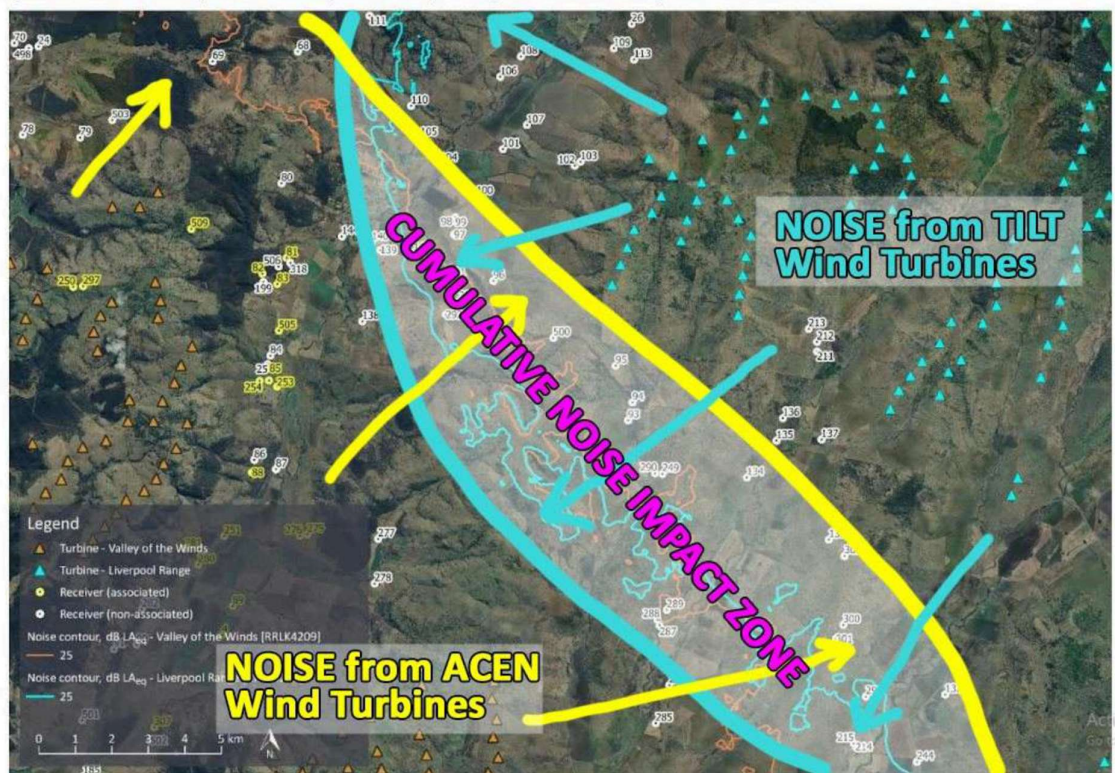
The ones who thought it sounded like easy money are the current hosts for ACEN and TILT. Now, we hear that many in the land host group are not so happy campers given the contracts with developers have changed along the way.

Those who thought wind turbines sounded disastrous had worked out that Wind Lab and the like were not the sort of people you'd want to do business with.

- You can see from the image below that we live in the cumulative impact area marked out by both TILT and ACEN.

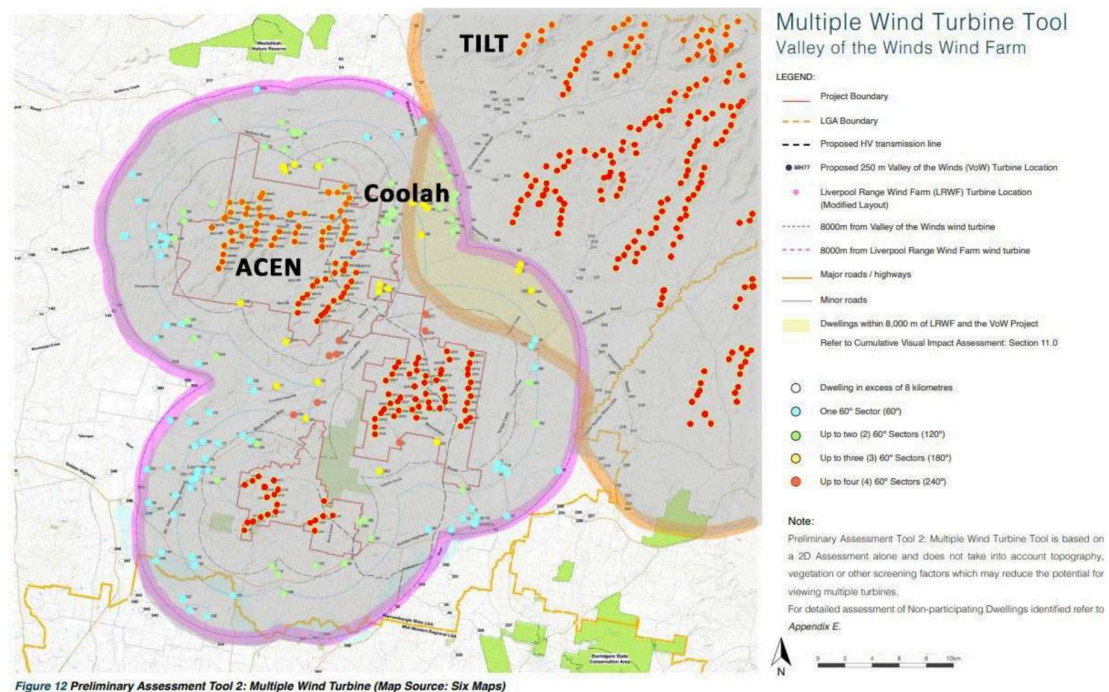
The developers' maps describe this area as that cumulatively impacted both visually and audibly by both Projects.

Figure 5: Predicted 25 dB  $L_{Aeq}$  noise contour map for the Liverpool Range Wind Farm and Valley of the Winds wind farm





- With the micro siting of turbines by both Tilt and ACEN, how many additional homes will fall into this “cumulative impact” area?
- I note that the whole town of Coolah has fallen into this cumulative impact area. See image below from the EIS:



- Note that we have 4 homes and at no stage have ACEN or the Department acknowledged the 4<sup>th</sup> home.

This home is **not imagined**, it was built sometime in the 1950s and is occupied by my son.

- There will be enormous impacts to the local roads and the Golden Highway.

Many of us are forced to seek medical treatment away from Coolah given the fact we only have one Dr and there are times when we have no Dr. Any specialist medical treatment requires a trip to Dubbo, the Central Coast, Sydney and beyond.

More than once in recent years I have been forced to sit by the side of the Golden Highway for hours due to a crash blocking both directions.

It is not great sitting on the side of the road for hours on end in the middle of Summer and given this is a major highway the disruption to freight between the East Coast and the Central West is crippling.

- Yet apparently there are no cumulative impacts expected:
  - The CWO REZ has 40+ projects inside or immediately adjacent to it. Warrumbungle Shire has 10 generation projects + the transmission line project.
  - The NSW Govt has announced plans to extend the line to Tooraweenah and Burrendong to facilitate even more generation facilities.
  - The NSW Govt has yet to complete a strategic-level (ie whole-of-government) Cumulative Impact Assessment (CIA) for the CWO REZ.
- This is the first time that the NSW Government will decide:
  - to enclose a community with turbines that will leave the town and countless land owners without effective aerial fire fighting,
  - knowingly impact on the value of home and landowners in the town and community given that nobody buys a house with a view of turbines and the added bonus of turbine noise,
  - render high value agricultural land unable to conduct aerial agriculture given the wake turbulence from wind turbines and presence of transmission and turbines on all ridges.
- This project should not be approved.