

ERRONEOUS CLAIMS  
by DPHI relating to  
CUMULATIVE ADVERSE IMPACTS  
from ACEN - VOW  
Industrial Wind Development

By Andrew Reynolds  
Adjacent Land Owner to VOW project



- \* 'Turee' airstrip over 1 km
- \* An extra 1 km cleared behind
- \* Capable of 3000L + water capable
- \* 802 Airtractors and more
- \* Serviced by 200,000 L storage

- 
- \* 'Turee' Airstrip would be too dangerous to use during a bushfire due to many smoke obscured giant wind turbines**
  - \* Critical Fire Fighting asset lost due to VOW Development**

**“The Department has recommended a condition requiring ACEN to detail operational procedures in the event of a bushfire in its Emergency Plan.**

**This would include measures such as shutting down turbines and positioning blades in a manner to minimise interference with aerial firefighting operations.”** (SSD-10461 pg 54)



**“The Department has recommended a condition requiring ACEN to detail operational procedures in the event of a bushfire in its Emergency Plan.**

**This would include measures such as shutting down turbines and positioning blades in a manner to minimise interference with aerial firefighting operations.”** (SSD-10461 pg 54)

**ERRONEOUS  
CLAIM**

**\*In Reality: Risk Assessment for aerial FIRE Fighting operators due to VOW development  
DO NOT fly anywhere near this area during smoke or low visibility.  
DO NOT use “Turee” or “Tongy” aerodromes when visibility affected by SMOKE  
in a BUSHFIRE event.**

# SIR IVAN FIRE 2017 AERIAL FIRE FIGHTING

**ACEN DEVELOPMENT**

**Aerial Tanker sweeps**

**'TUREE'**

**Turbines  
(proposed)**

**Aerial Tanker sweeps**

**Aerial Tanker sweeps**

**'PERIDOT'**

**Girragulang  
cluster**

**'TONGY'**

\* Aerial Fire Fighting as done in the 2017 would no longer be possible

\* Air tankers were flying well below proposed turbine tip height in order to accurately hit the fire front

\* Flying over turbines with a high enough safety margin would mean little chance of water hitting the fire front target

\* Lives, property and stock will be at much higher risk in a future fire event without effective aerial support

\* The only mitigation that can work is much larger turbine setbacks for non-associated property

\* The future likely means evacuation orders, much higher insurance, or being uninsurable

**“The Department is satisfied that the project would not fundamentally change the broader landscape characteristics of the area” (SSD-10461 pg iii)**



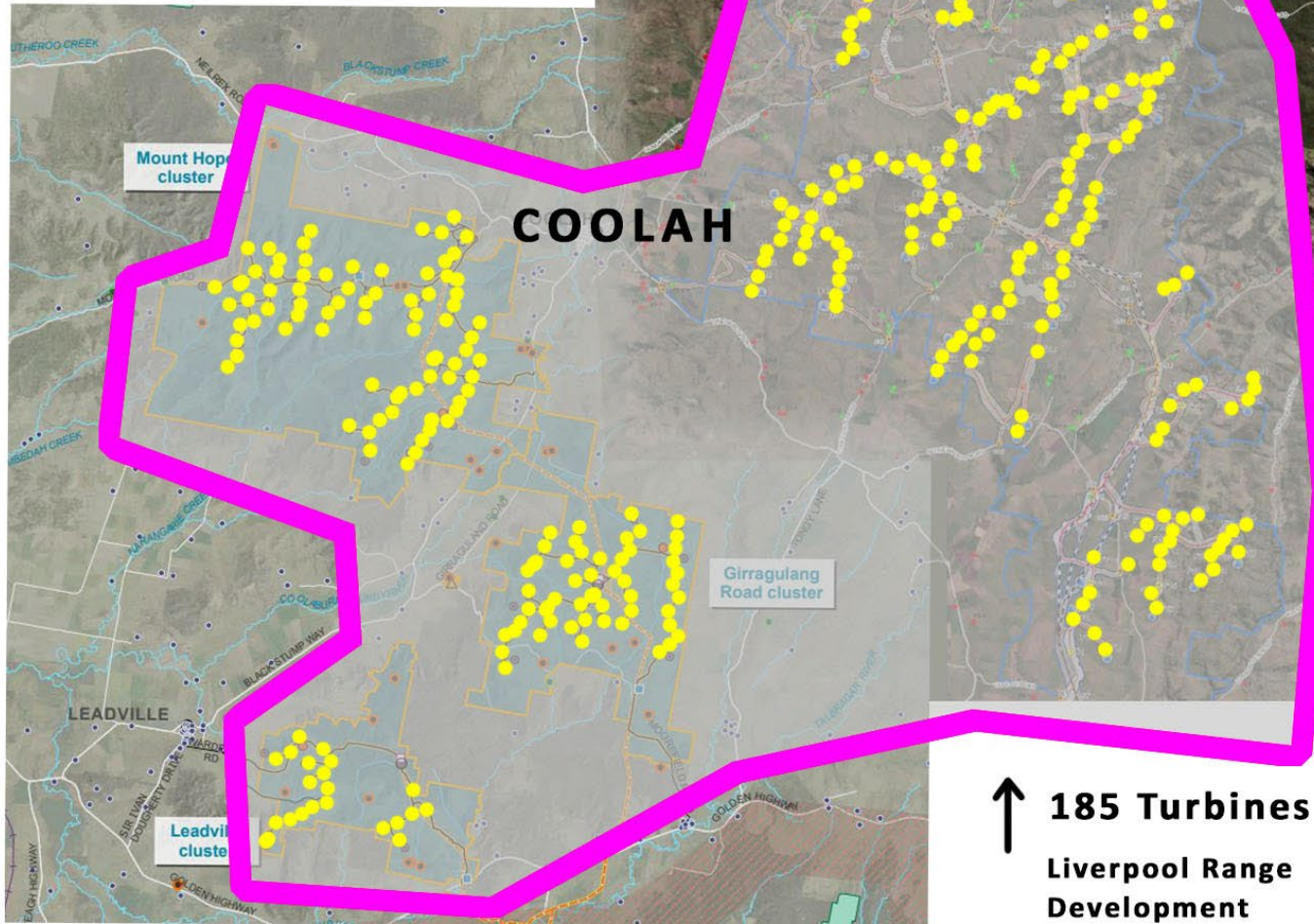
**“The Department is satisfied that the project would not fundamentally change the broader landscape characteristics of the area” (SSD-10461 pg iii)**



# TOTAL TURBINES = 316

Valley of the Winds  
Development

131 Turbines



185 Turbines  
Liverpool Range  
Development

ERRONEOUS CLAIM



**“The Department is  
satisfied that the project  
would not fundamentally  
change the broader  
landscape characteristics  
of the area”**

(SSD-10461 pg iii)

# Conclusion

- Two erroneous claims made by DPHI
- These relate to only two of many adverse impacts NOT addressed properly by DPHI or developers
- Multiple mega projects in the Coolah district will have cascading and cumulative impacts that have not been assessed
- NO comprehensive Cumulative Impact Assessment (CIA) been done by DPHI for the CWO REZ or our district
- No more projects should be approved until CIA completed