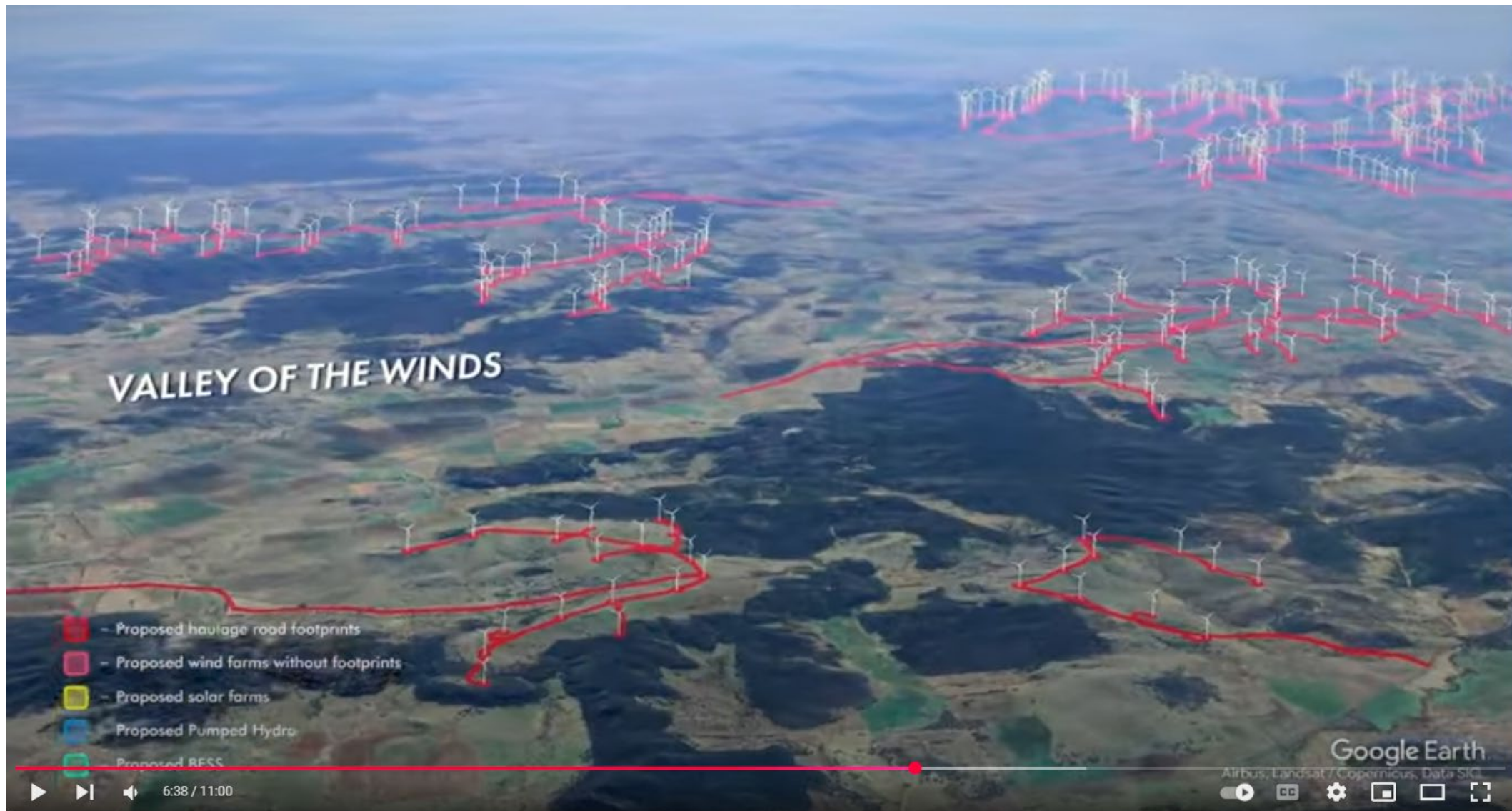


# Coolah Surrounded



3d animation mapping of all proposed renewable energy projects in NSW.



Rainforest Reserves Australia  
1.12K subscribers

Subscribe

86



Share

Save









# ***B737 Tanker***

<https://youtu.be/FvPelvzPT9w>



B737 Tanker, Carnells'/pencil Pine paddock fire 15Mar24

# ***Turbine Fire Source***



**FIG 1. GOULBURN JANUARY 2023**





**FIG 2. REDHILL SOUTH AUSTRALIA, 7th FEBRUARY 2024**



**FIG 3. PORTLAND VICTORIA, 28th JUNE 2024**



# ***B737 Tanker***

<https://youtu.be/FvPelvzPT9w>



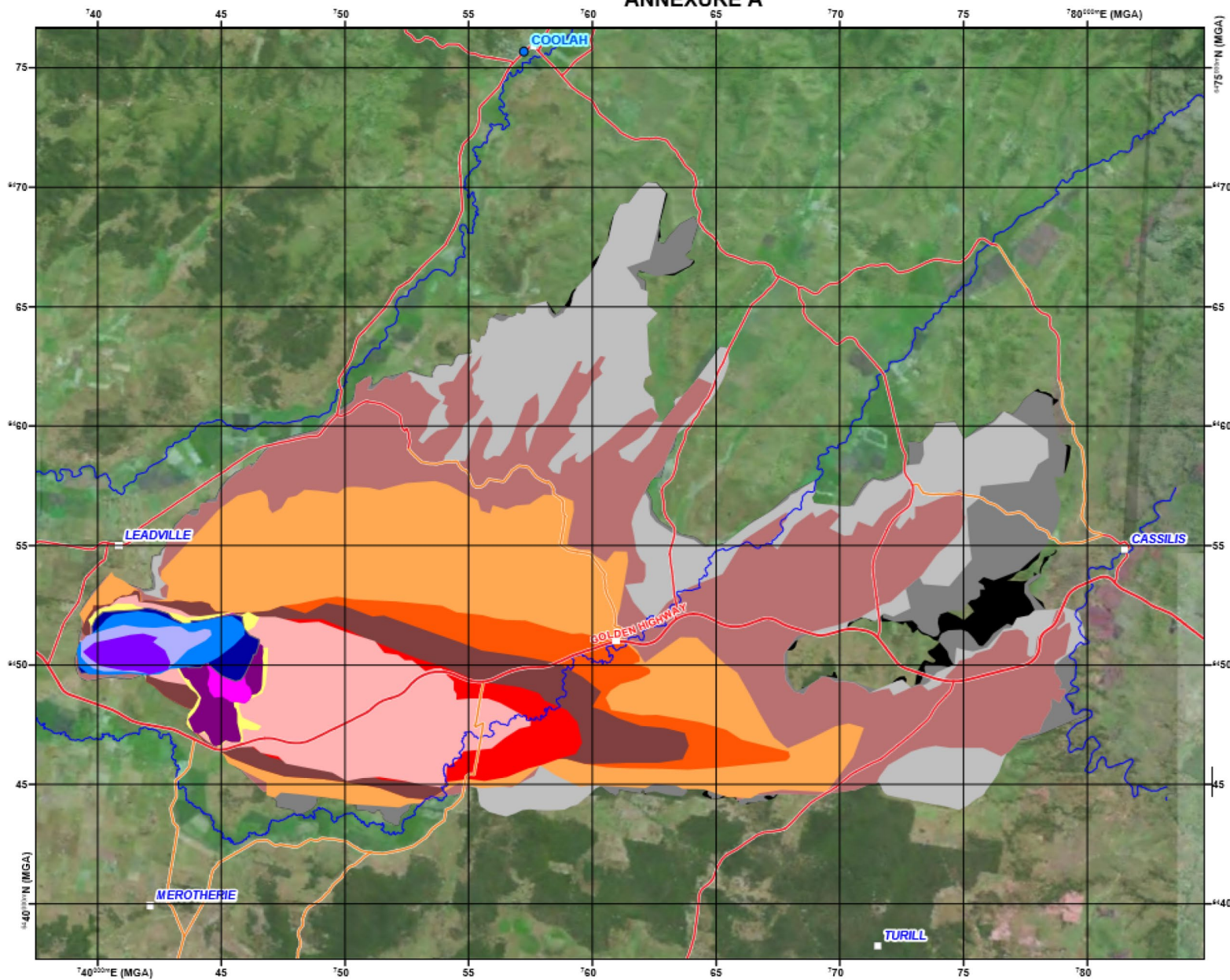
B737 Tanker, Carnells'/pencil Pine paddock fire 15Mar24





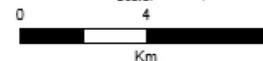
# Sir Ivan fire Feb 2017

## ANNEXURE A



### Sir Ivan Dougherty Fire Rate of Spread

Scale: 1 : 150,000



### LEGEND

- Saturday11\_1411
- Saturday11\_1500p
- Saturday11\_1818p
- Saturday11\_2152
- Saturday11\_2322
- Sunday12\_0343
- Sunday12\_1121
- Sunday12\_1253
- Sunday12\_1309
- Sunday12\_1405
- Sunday12\_1447
- Sunday12\_1730
- Sunday12\_2047
- Monday13
- Thursday16\_1255
- Monday20

### PRODUCTION INFORMATION

#### Map Details:

Base Data: © LPI, SPOT, AAM, BKM, OEH, Bensis, Katron  
Map Projection: GDA 1994 MGA Zone 55  
Print Date / Time: 20/02/2017 8:53:33 PM  
Produced by: Helix Apps - EBA MAPS

### WARNING INFORMATION

1. This map has been prepared by a third Government agency (the agency) using data supplied to it by other agencies and entities.
2. The agency has not verified or checked the data used to prepare this map. The map may contain errors and omissions.
3. The agency has not made any attempt to ground truth the map.
4. There will be a margin of error in relation to the location of features recorded on the map. The agency is unable to specify the extent or magnitude of that margin of error.
5. Significant changes may have occurred:
  - i. in the time between which the data was originally collected and the map produced; and
  - ii. since the map was produced.
6. Users must, wherever possible, ground truth the map before relying on it or the accuracy of the map or the information included on the map for any purpose.
7. The agency accepts no responsibility for any injury, loss or damage arising from the use of this map or any errors or omissions in the information recorded on the map.

### KEY MAP



# Investigation finds NSW Rural Fire Service failed to fully communicate dangers before Large Air Tanker crashed near Cooma in January 2020



By Antoinette Radford

Bushfires

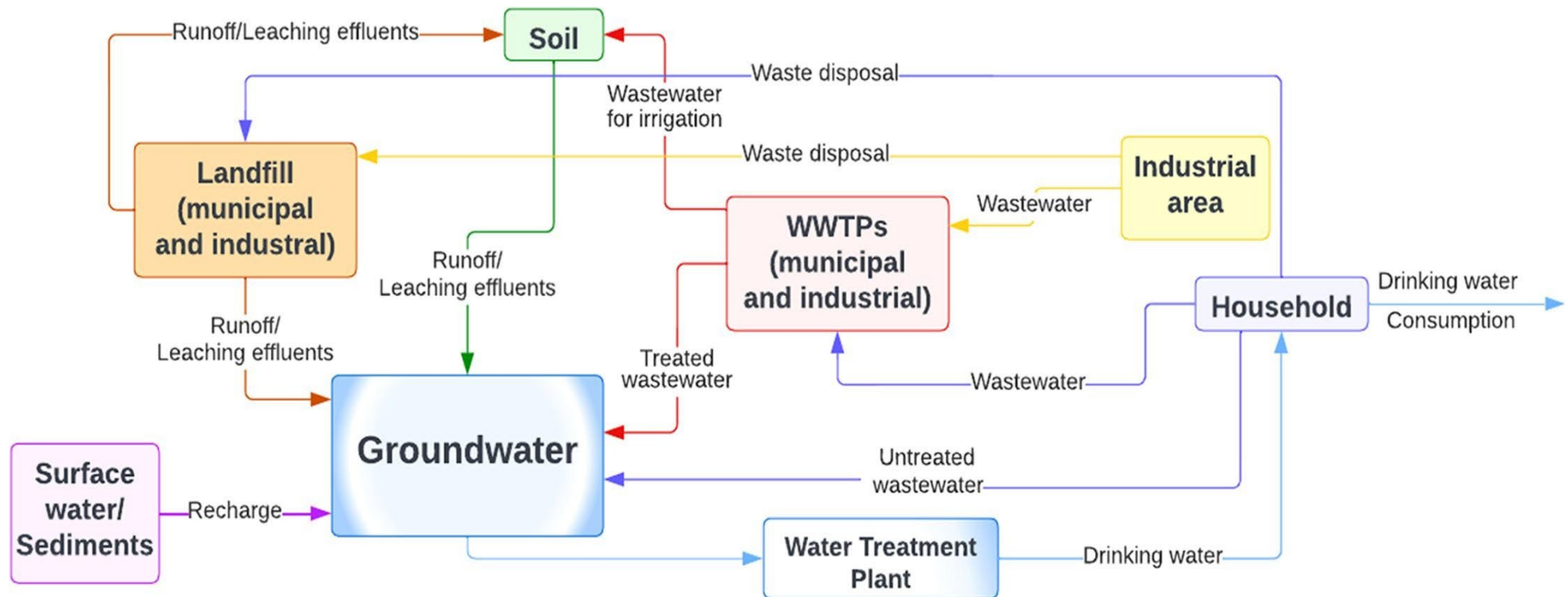
Mon 29 Aug 2022



The charred wreckage of a C-130 Hercules which crashed in southern NSW, north-east of Cooma, killing its three US crew members. (Supplied: NSW Police)



# ***BPA sources – add Turbines***



# ***Endocrine Disruptor***

- ◆ Fertility is vital for livestock producers



# ***BPA Limits Uncertain***

The new TDI established by EFSA is 0.2 nanograms/kg body weight/day (20,000 times lower than the 2015 TDI of 4 micrograms/kg body weight/day).

By comparing the new TDI with estimates of dietary exposure to BPA in the European Union, EFSA concluded that European consumers in all age groups are likely to exceed the new TDI, suggesting potential health concerns. In response, the European Commission announced they are proposing to ban BPA in food packaging.

- [Read more about EFSA's evaluation of BPA](#)
- [European Commission Initiative: Food safety – restrictions on bisphenol A \(BPA\) and other bisphenols in food contact materials](#)

# *Food Chain Contamination*

## LPA Accreditation

### Food safety on your property

Question: **2.8**

Have you identified any chemical or physical contamination risks to livestock from equipment or infrastructure on your property which may be degrading with age (for example, from electrical transformers, capacitors, hydraulic equipment, coal seam gas structures, solar panels or wind turbines. This can also include construction or coal mine waste)?

---

- ☐ Yes, and I have completed a property risk assessment.
- ☐ No contamination risks have been identified.
- ☒ I am in the process of completing a risk assessment.

← Back

Save and continue

Select your answer and then click 'Save and continue' to continue



# *Who will be responsible?*

Can I be held accountable for the food safety of the livestock I produce?



An LPA NVD is a legal document. When you sign an LPA NVD, you are declaring the food safety status of the livestock listed on it.

As an accredited LPA producer you have made a commitment to fulfil LPA requirements on-farm, outlined in the [LPA Rules and Standards](#).

Producers accredited under LPA are subject to [random audits](#) to ensure they are complying with program requirements.

# *Mass Gravity Base*

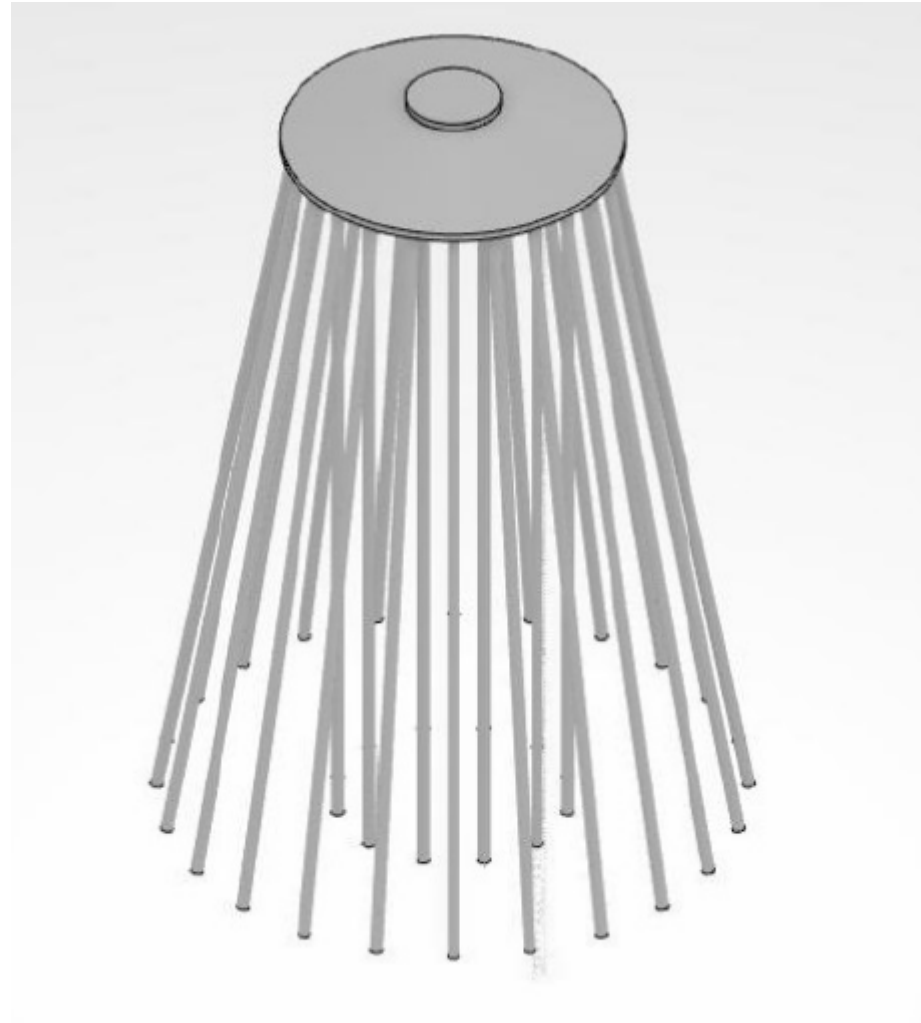


# ***Pier/Anchor type Foundation***

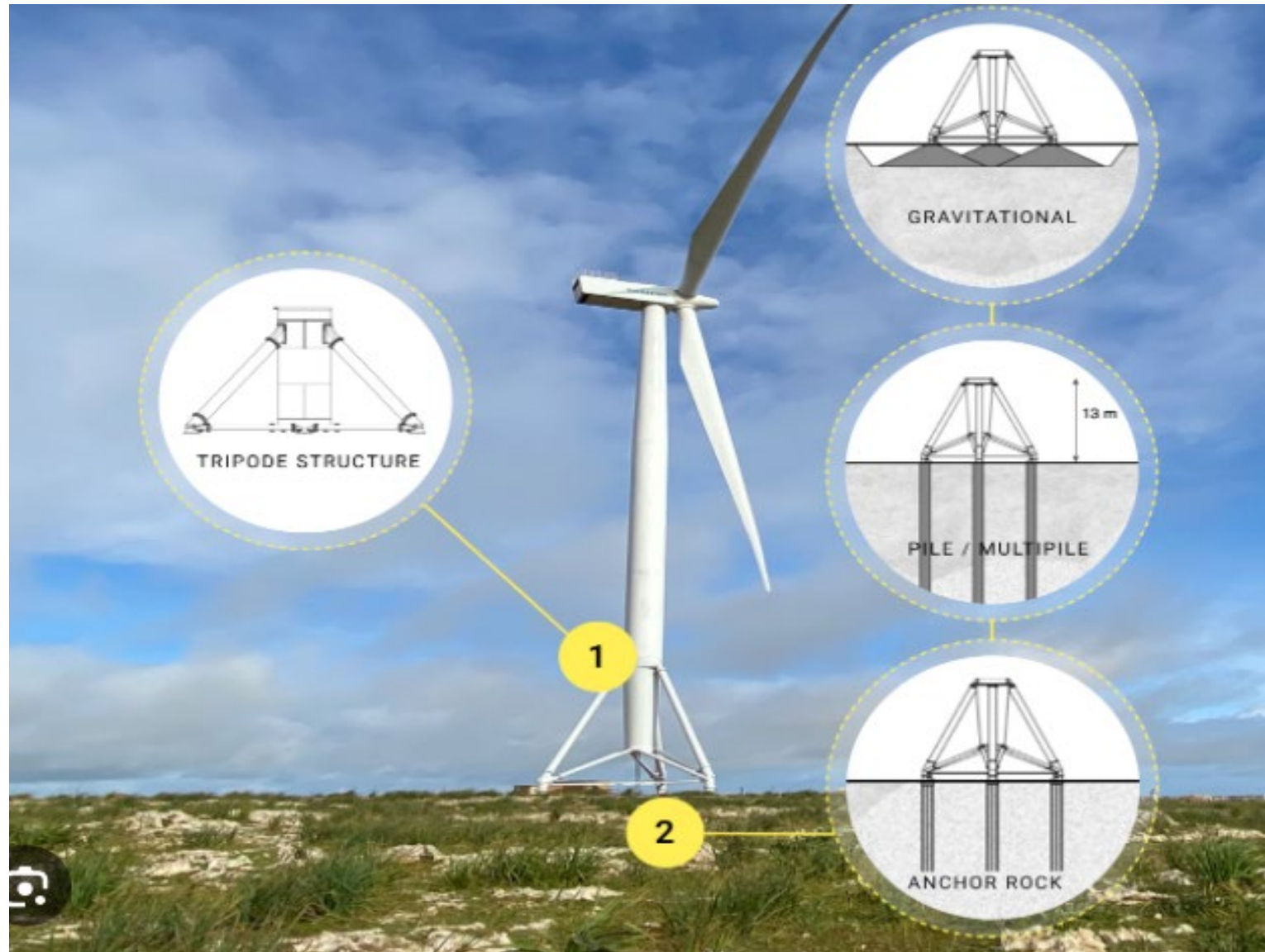




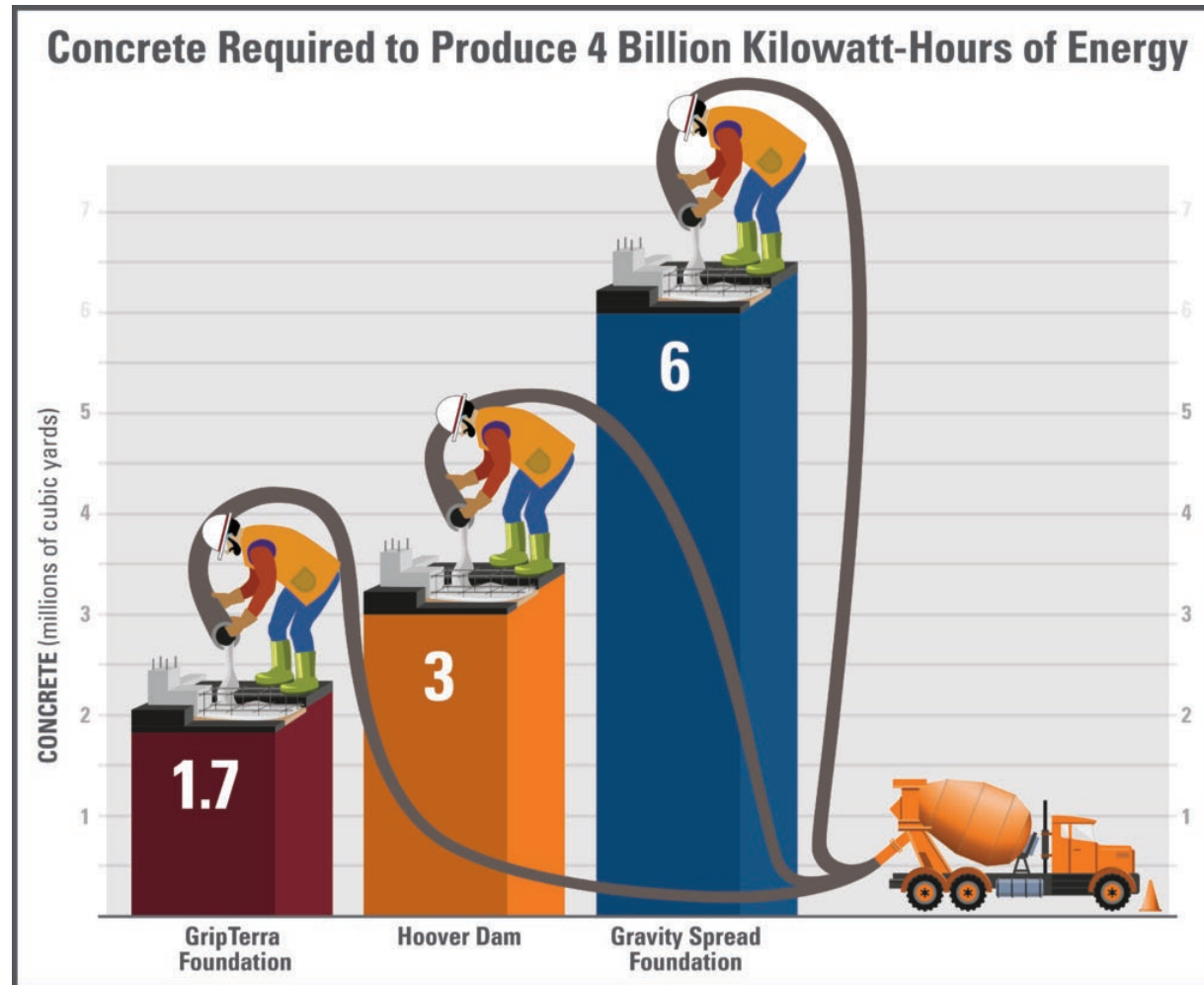
***Much less concrete***



# *Pier-type Foundation*

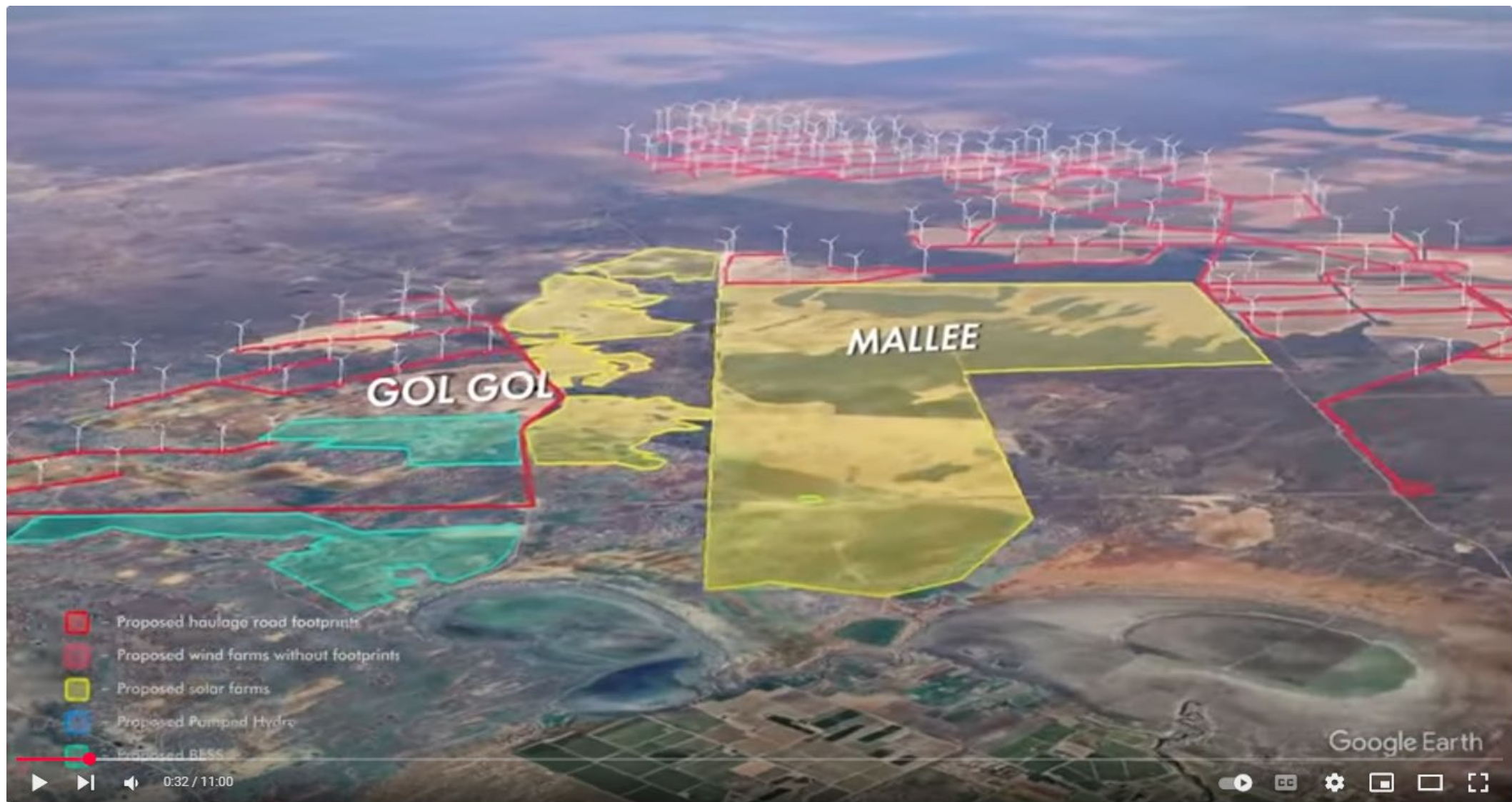


# *Strengths and Advantages*





# *41,000 turbines across Australia plus Solar plus BESS*



3d animation mapping of all proposed renewable energy projects in NSW.



Rainforest Reserves Australia  
1.12K subscribers

Subscribe

86



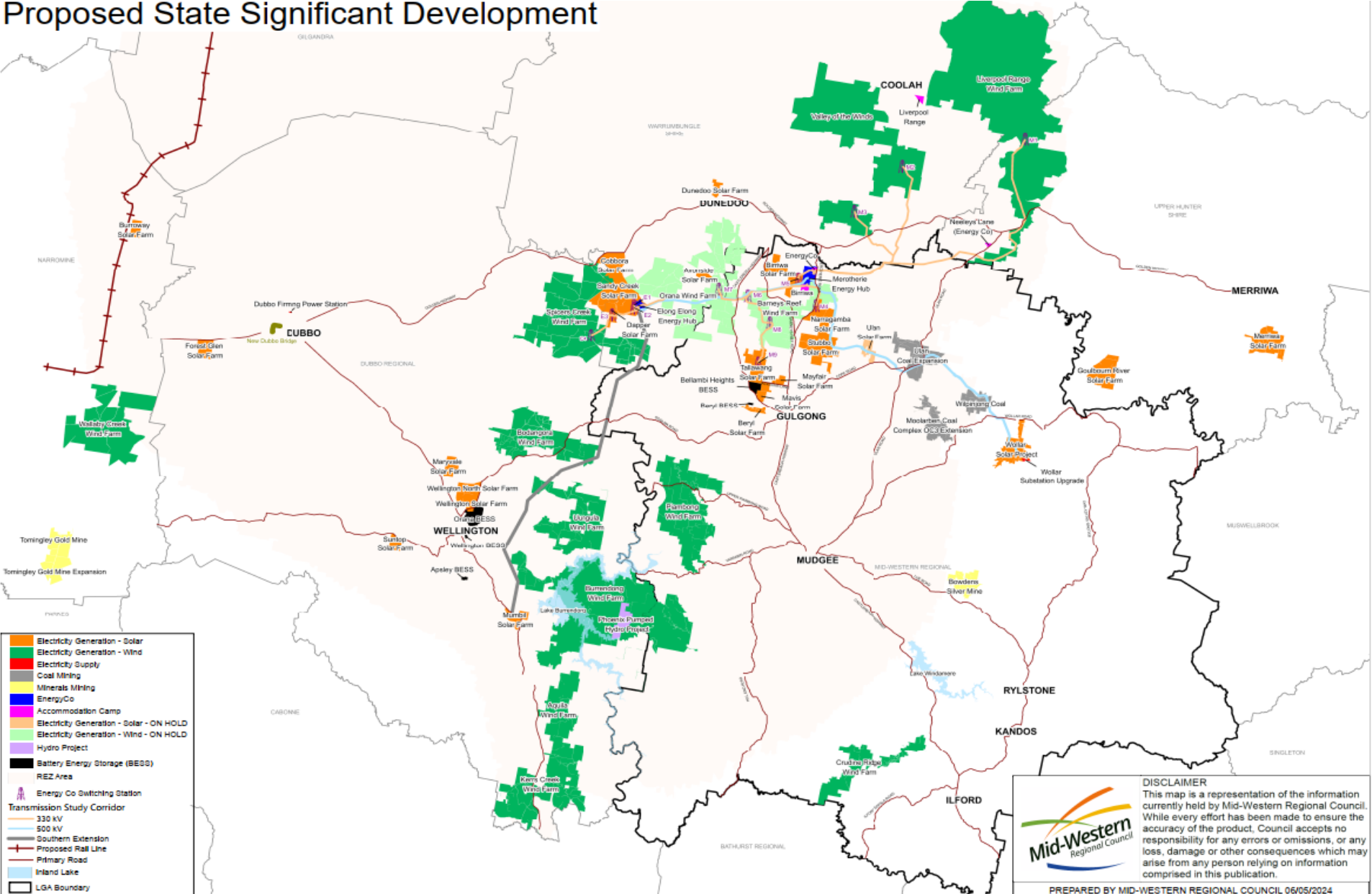
Share

Save



# Cumulative Impact

## Proposed State Significant Development

























































# Capacity Factor <30% = works 2 days per week.

The Table below shows the current week ending date, the Total Generated Power across that week, the calculated Average Power (worked out from the Total Generated Power) the Capacity Factor for that week, and the total generated power as a percentage of the overall total power consumption used by the Grid.

Week Ending	Total Generated Power	Average Power	Capacity Factor	Power To Grid (%)
30Mar 2025	702GWH	4178MW	31.04%	17.2%

**Long Term Capacity Factor – 52 weeks – 26.23%** (Last Week – 25.99%)

**Long Term Capacity Factor – 339 weeks – 29.63%** (Last Week – 29.62%)



# Efficiency

- If NSW is consuming 11GW and you use an inefficient method of making that power, you will use more resources overall.
- 1<sup>st</sup> and 2nd Laws of Thermodynamics



# Wishful thinking won't do it

- The Laws of thermodynamics trump an Act of Parliament.
- Climate Change (Net Zero Future) Act 2023
- Rule By Decree



# Thermodynamics wins, we all lose

## The Climate Change (Net Zero Future) Act 2023

Legislating our commitment to meet our State's ambitious emissions reduction targets



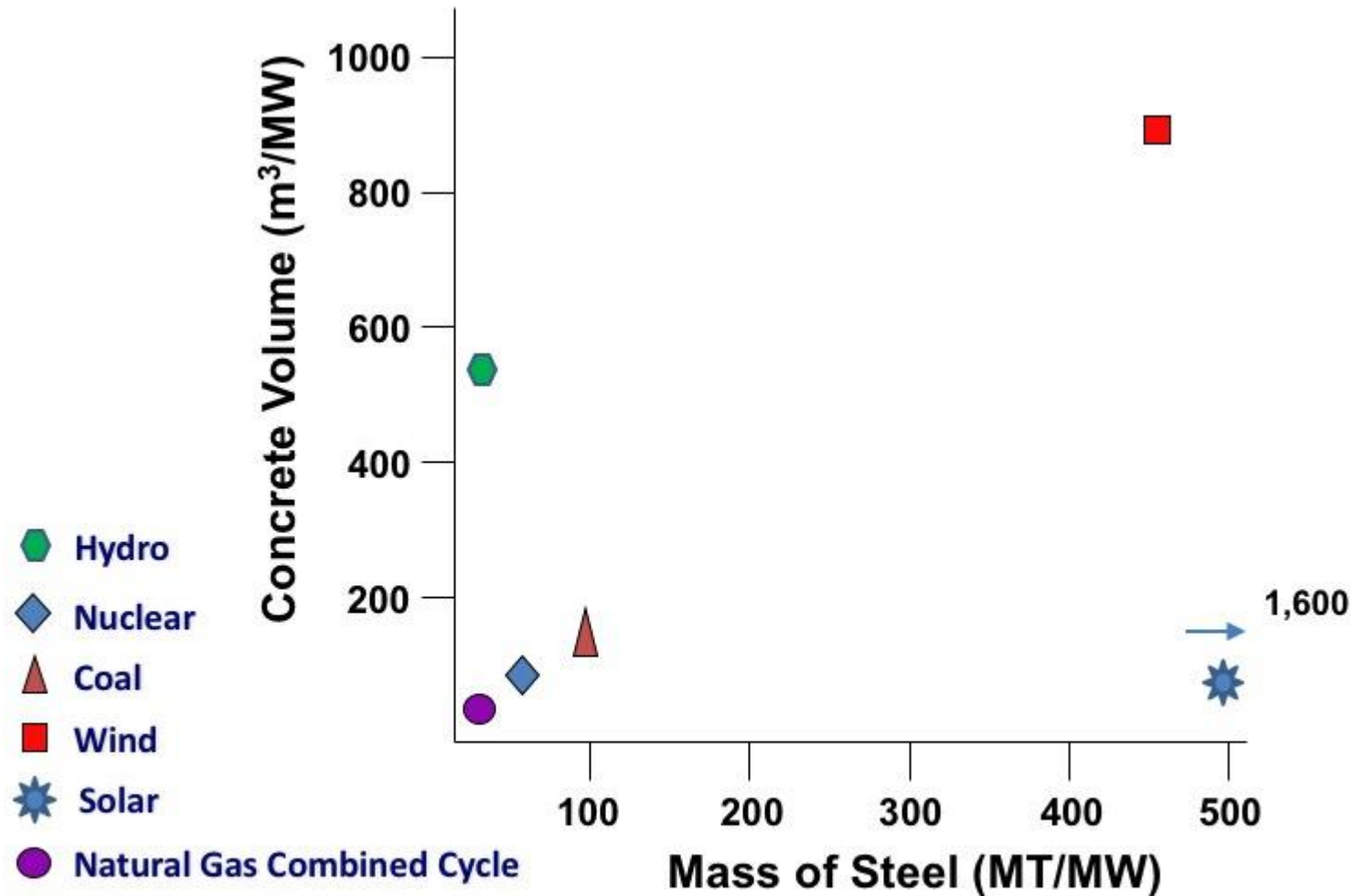


# Inefficient Use of Resources

- Wind, solar, and batteries require 1,000% more steel, concrete and glass; 300% more copper; and 4,200%, 2,500%, 1,900%, and 700% more lithium, graphite, nickel, and rare earths, respectively, than fossil fuels, to produce the same amount of energy.
- International Energy Agency (and others).



# Counterproductive



Materials needed to install various energy systems



# Inefficiency = more materials

## Copper is critical to the energy transition.

Copper is critical to the energy transition, including the manufacture of electric cars, wind turbines and solar panels.

The need for responsibly produced Australian copper is clear.

It's happening now at BHP.

To discover how, visit [bhp.com/critical](https://bhp.com/critical)

**BHP**

Australia's global  
resources company





Volvo says emissions from making EVs can be 70% higher than petrol models - and claims it can take up to 9 YEARS of driving before they become greener

By Rob Hull For [Thisismoney.co.uk](https://www.thisismoney.co.uk)

Updated 05:50 EDT 05 Nov 2021





# Miners love Electric Cars

Minerals in

## ELECTRIC VEHICLES VS GAS CARS

Electric vehicles require a wider range of minerals for their motors and batteries compared to gas cars.

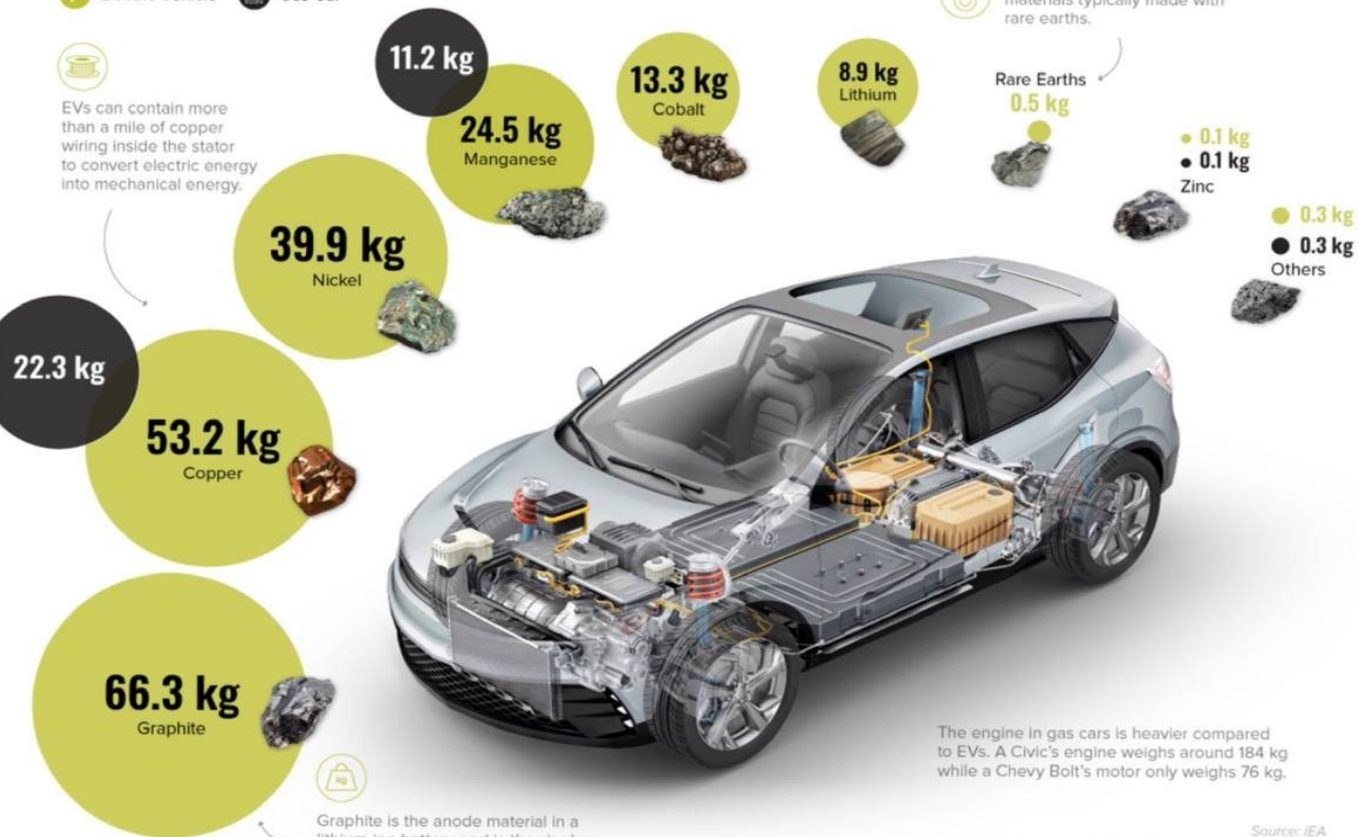
In fact, an EV can have 6 times more minerals than a gas car and be on average 340 kg heavier.

Mineral content kg/vehicle *Steel and aluminum not included.*

Electric Vehicle Gas Car



EVs can contain more than a mile of copper wiring inside the stator to convert electric energy into mechanical energy.



Many EV motors use magnetic materials typically made with rare earths.



Graphite is the anode material in a lithium-ion battery and is the single largest component by weight.

The engine in gas cars is heavier compared to EVs. A Civic's engine weighs around 184 kg while a Chevy Bolt's motor only weighs 76 kg.

Source: IEA  
The values are for the entire vehicle including batteries and motors.  
The intensities for an electric car are based on a 75 kWh NMC (nickel manganese cobalt) 622 cathode and graphite-based anode.





Simon Michaux

# The Purple Transition – the start of a possible solution

Simon P. Michaux  
Associate Professor Mineral Processing & Geometallurgy



1:45 / 1:03:28



The Purple Transition – the start of a possible solution. Associate Professor Simon Michaux



# For the IPC to consider

- Massive overbuild.
- Many Transmission lines needed.
- Synchronous Condensors needed.
- Dispatchable (gas/diesel/coal) backup needed.
- Batteries further destroy environmental credentials.
- Pumped Hydro further destroys environmental credentials.
- Hydrogen impractical
- Massive sunk energy and materials required.
- Short lifespan thus constant replacement
- No net environmental benefit
- Actually makes things worse

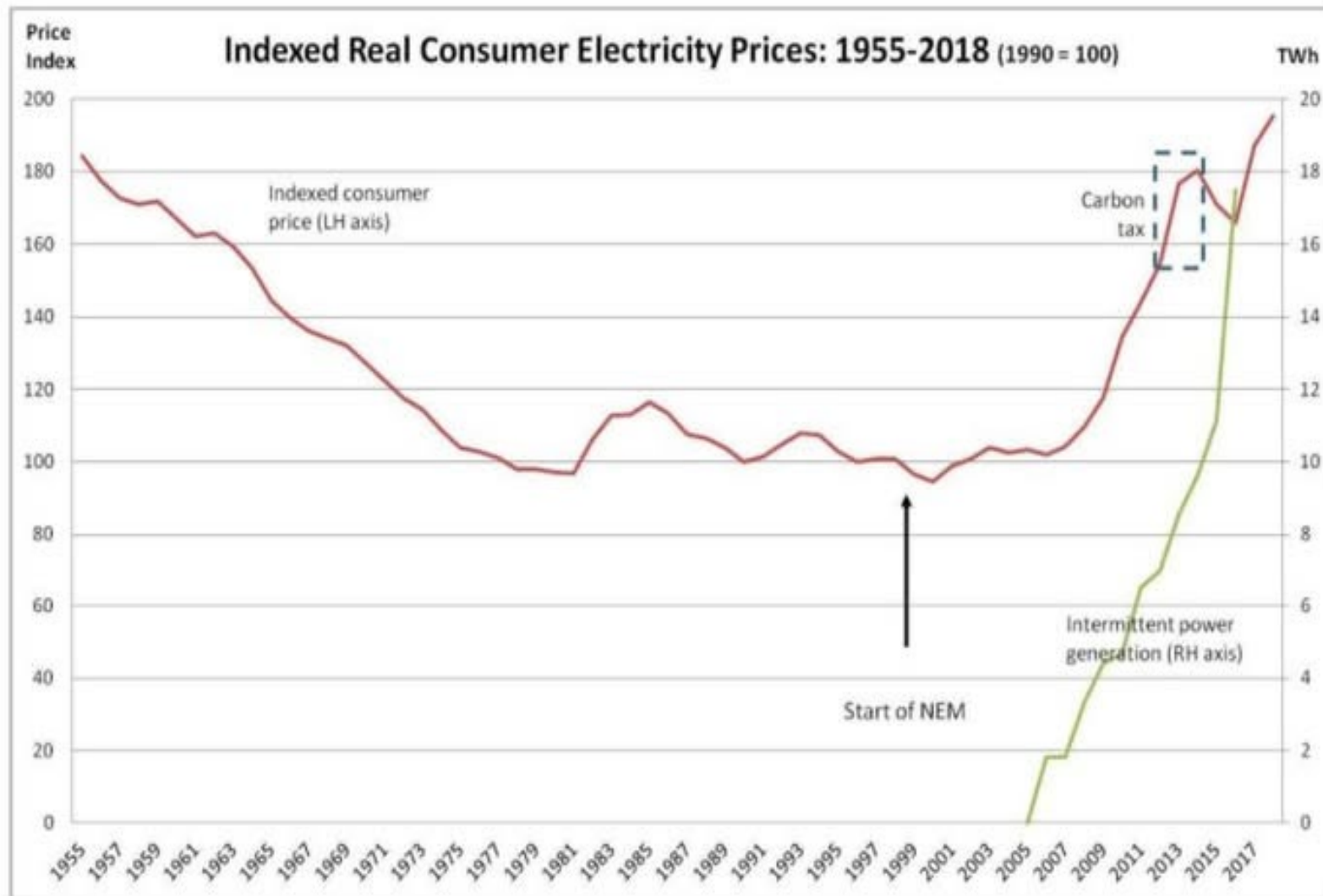


# For the IPC to Consider

- Not for 'the greater good'
- Actually counterproductive.



# Wind+Solar+NEM=high cost



## Sources

**Prices** 1955 - 1980: *Electricity in Australia*, prepared for CIGRE by Frank Brady AM (former CEO, Electricity Commission of NSW), 1996

1980 - 2016: ABS 6401.0 Consumer Price Index

2017 - 2018: Adjustment (15% nominal increase) to take account of price increases announced by major elect distributors in June 2017

**Intermittent power generation** (Terra Watt hours, TWh) from Figure 4.2 in *Independent Review into the Future of the National Electricity Market*



# Nordstream Sabotage

**300,000 T**

sending an estimated 300,000  
tons of hazardous methane gas





- Ukraine war – immense use and destruction of fuel





- Hunga Tonga volcano added ~10% of earth's atmospheric H<sub>2</sub>O.





20:53



**IF YOU THINK THIS IS  
DESTROYING THE PLANET**



**AND THIS IS  
SAVING THE PLANET**



**YOU MIGHT BE AN IDIOT**

