





### Steps in Visual Assessment

The visual assessment will involve the combination of desktop and field evaluations of the proposed wind energy project and its various components, turbines and ancillary facilities. The visual performance objectives form the principal framework and guide for assessing the proposed wind energy project when applied to individual viewpoints.

All key public viewpoints and individual dwellings within the 'visual catchment' (as defined above) should be identified and assessed.

However, where relatively close clustering of houses belonging to different landowners or occupants occur, representative viewpoints may be selected and assessed in lieu of every single dwelling in the following types of areas:

- rural residential clusters;
- rural villages; and
- urban residential and commercial areas.

When utilising representative viewpoints, the proponent must clearly identify the number of viewpoints being represented and assess impacts based on the 'worst case scenario' viewpoint, for example the closest turbine.

For selected viewpoints, photomontages generated by the proponent and other experts may be used in conjunction with the performance objectives to assist in the judgements being made on whether or not the proposed wind energy project design will achieve the desired visual performance objectives.

The relative position of the viewpoints in relation to a dwelling is also an important consideration that should be outlined in the EIS. For example, views to the turbines from the primary living areas of the dwelling would be considered more important than views from non-habitable areas<sup>9</sup>.

### **Summary of matter raised**

#### Impacts on properties in Coolah and other villages

Submitters commented on the project visual impact including overshadowing properties in Coolah as well as the visual impact associated with the transmission lines on nearby towns and villages.

#### **Response**









The villages of Coolah, Leadville and Uarbry have been assessed in the EIS in accordance with the Bulletin (Department of Planning and Environment, 2016c). Representative photomontages have been prepared for the townships of Coolah (Photomontage 04 - Appendix C of **Appendix 6**) and Leadville (Photomontage 02 - Appendix C of **Appendix 6**). Impacts associated with these locations from the amended project are expected to be similar or very slightly reduced from what was presented in the EIS. An additional photomontage has also been prepared from Tongy Lane (Photomontage 08 - Appendix C of **Appendix 6**).








# Multiple Wind Turbine Tool (Revised Layout 2023)

## Valley of the Winds Wind Farm

### LEGEND

-  Project Boundary
-  Proposed 250 m Valley of the Winds Wind Farm (VOW) Turbine Location (Revised 2023 Layout)
-  Proposed Liverpool Range Wind Farm (LRWF) Turbine Location (Modified layout)
-  Participating dwellings
-  8,000m from nearest VOW turbine
-  8,000m from nearest LRWF turbine
-  8,000m from nearest Barneys Reef Wind Farm (BRWF) turbine
-  Area with dwellings within 8,000m of LRWF / BRWF and VOW turbines

### NUMBER OF 60° SECTORS WITH TURBINES:

-  Dwelling in excess of 8,000 m
-  One (1) 60 Degree Sectors
-  Two (2) 60 Degree Sectors
-  Three (3) 60 Degree Sectors
-  Four (4) 60 Degree Sectors

### Results of Multiple Wind Turbine Tool (Revised 2023 layout):

**Three (3) 60° Sectors (VOW only) = 17 Non-participating Dwellings**

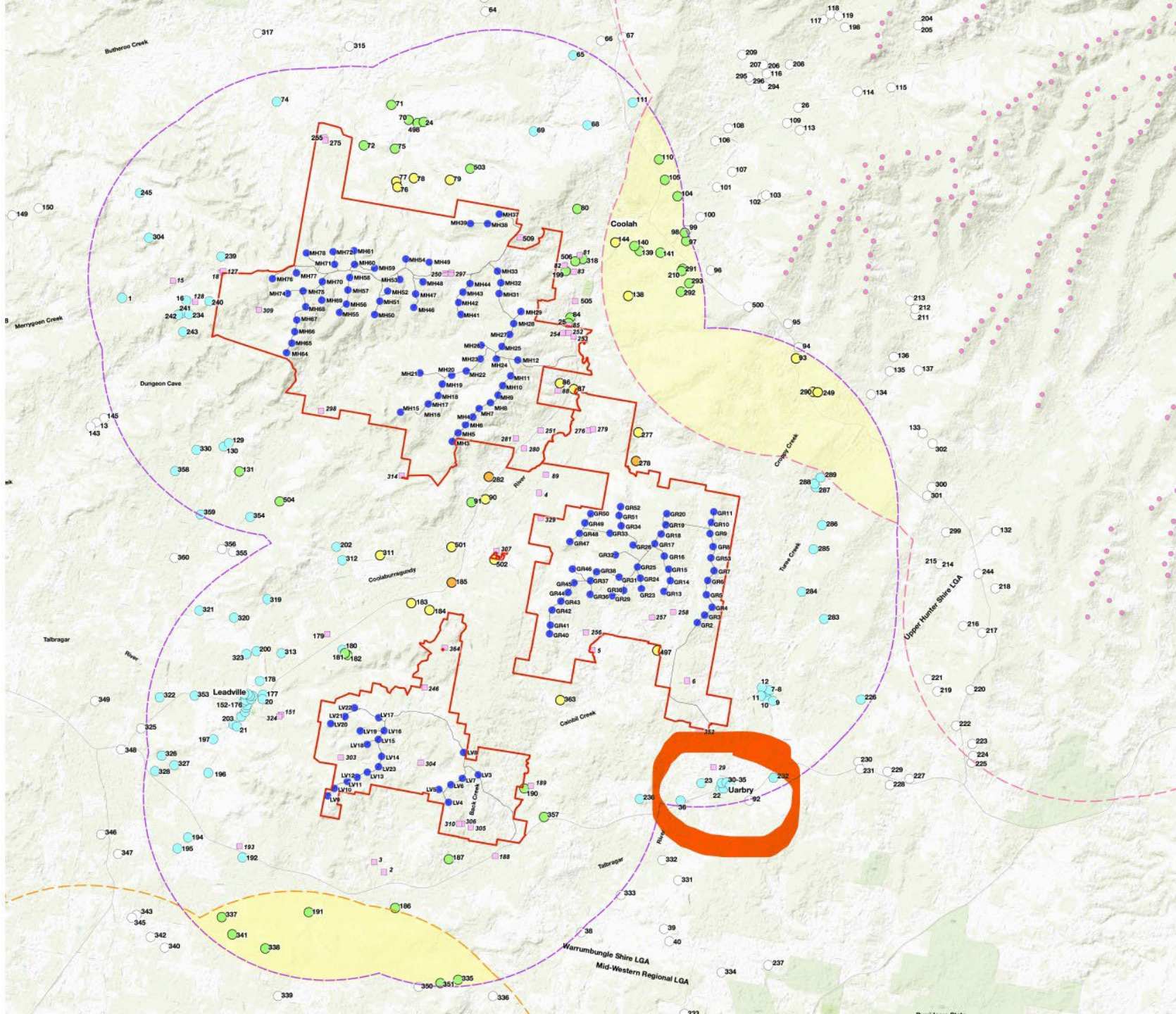
**Three (3) 60° Sectors (VOW + LRWF) = Five (5) Non-participating Dwellings**

**Four (4) 60° Sectors (VOW only) = Three (3) Non-participating Dwellings**

*\* Note the turbines utilised for the assessment of the LRWF are associated with the Modification Layout which is not yet approved (accessed via Tilt Renewables: Liverpool Range Wind Farm Project website, accessed on 10th February 2022). Turbines utilised for the assessment of Barneys Reef Wind Farm were accessed via Major Projects Planning Portal (April 2023).*



Activate Windows  
Go to Settings to activate Windows.





# VOW35 Turee Street / Short Street, off Golden Highway, Uarbrly

Dense windbreak plantation and raised landform may fragment views towards the Project

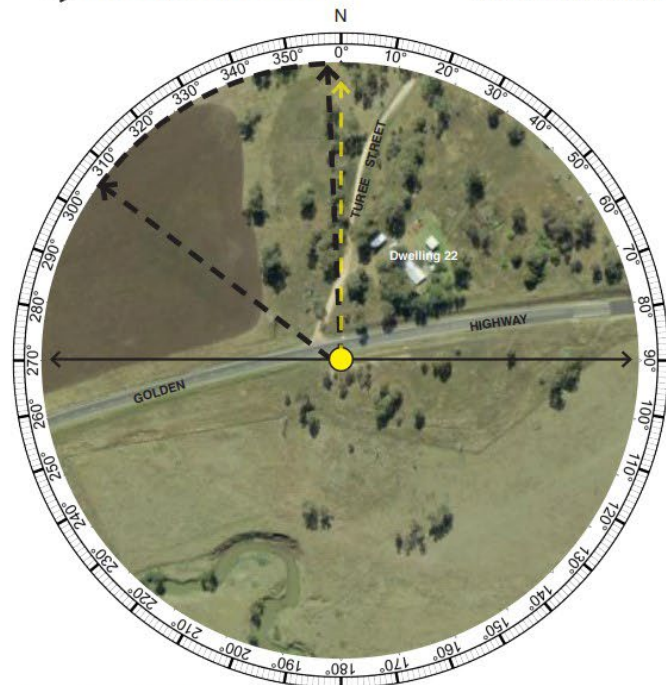
Indicative direction of visible turbines based on 3D assessment

Vegetation will further fragment views towards the Project



## EXISTING View

- Viewing direction and centre of panorama
- Extent of panorama
- Direction of potentially visible turbines
- Extent of potentially visible turbines



Aerial Image VOW35 (Aerial Image Source: Six Maps)

## VIEWPOINT VOW35

Viewpoint Summary:	
Location:	Elevation:
Turee Street / Short Street, off Golden Highway, Uarbrly	497 m
Coordinates:	Viewing Direction:
32° 2'50.77"S 149°45'45.73"E	Northeast
Distance to nearest WTG:	Visibility Distance Zone:
6.59 km	<b>Far Middleground (FM)</b>
Land Use:	Viewer Sensitivity Level:
Low use road	<b>Level 3: Low</b>
LCU:	Scenic Quality Rating:
Towns and settlements / Alluvial plains	<b>Low</b>
<b>Visual Influence Zone: VIZ3</b>	

Existing Landscape Character Description:
This photograph was taken from Turee Street / Short Street which turns off from Golden Highway in Uarbrly. It represents views from the village of Uarbrly which is characterised by low density residences in a rural setting along low use roads. Residents of village engage predominantly in agricultural activity. Land is generally flat to gently undulating in a modified landscape setting. Moderately dense windbreak & roadside vegetation can be seen in the foreground of the image. Most houses are surrounded by dense vegetation which helps screen views. Views at this location are filtered and contained by vegetation in the foreground and middleground.
Potential Visual Impact:
A preliminary assessment based on topography alone suggests that there will be views of 5-10 WTGs. These views will be fragmented by the vegetation in the foreground & middleground. The likelihood for the WTGs to become a major feature in the landscape is low. Most views will be fleeting and limited.

Visual Performance Objectives:
No visual performance objectives apply to this viewpoint due to the Visual Influence Zone Rating (VIZ3).

Activate Windows  
Go to Settings to activate W





↓ UARBRY

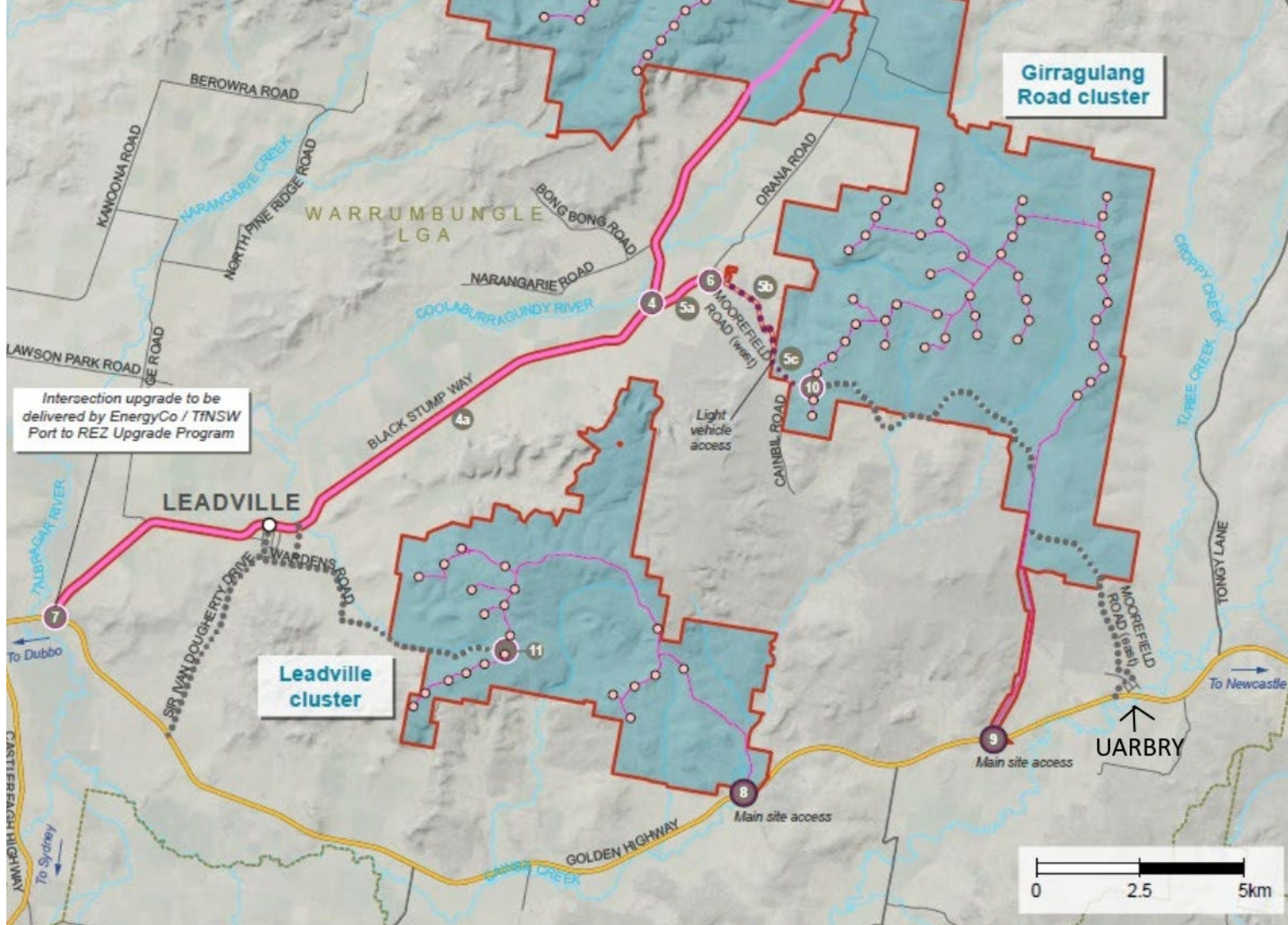


Photomontage 05 - North









RAMBOLL AUSTRALIA - GIS MAP file : 318001172\_GIS\_PD13\_RFResponse | F002\_TRAFFIC\_RdUpgrades\_V26  
Aerial photography from NSW Government Spatial Services

**KEY**

- |                                      |   |   |
|--------------------------------------|---|---|
| Project site                         | Proposed road upgrade                               | LGA boundaries  |
| Turbine location                     | Proposed road upgrade (limited)                     | State agency road upgrades facilitating the CWO REZ (EnergyCo) - and OSOM route |
| Main site access                     | Road maintenance during construction                |   |
| Access track                         | Proposed intersection upgrade and reference number* |   |
| Road not for use during construction | Proposed road upgrade reference number*             |   |