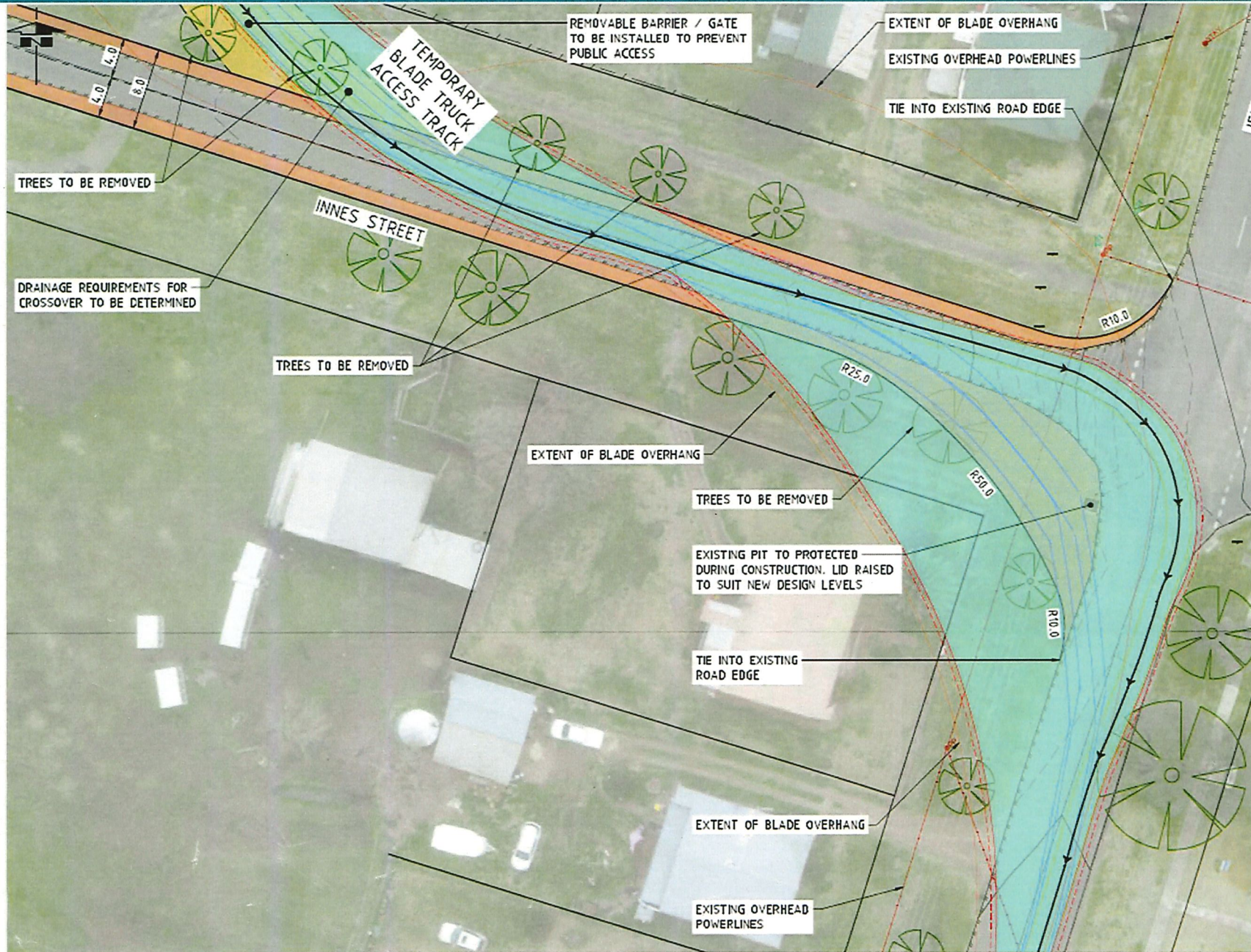
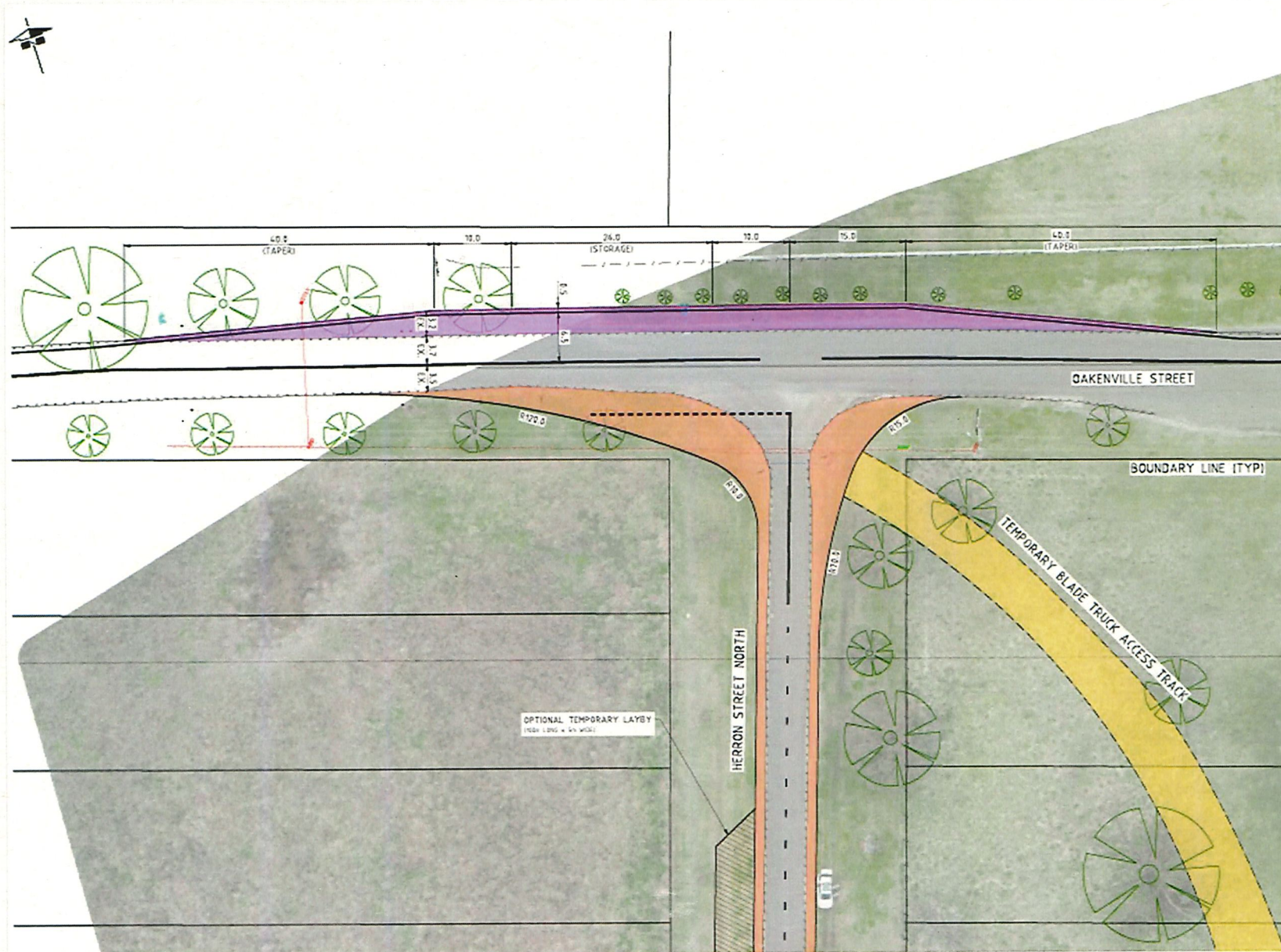


Blade Turn off Innes St to Jenkins St

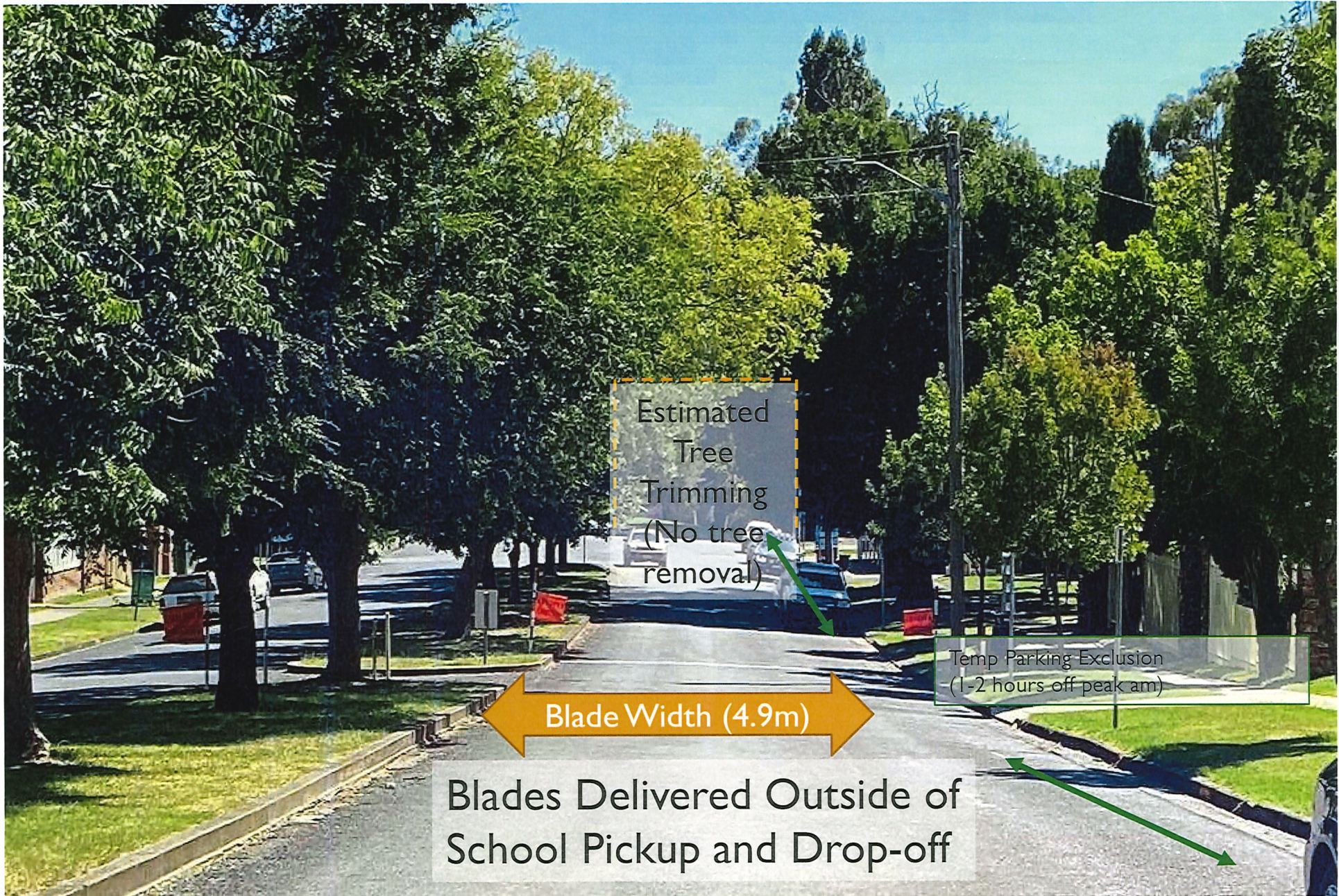


Optional Left Hand Passing Bay for Right Turning Vehicles



INTERSECTION LAYOUT - ALTERNATIVE BAR ARRANGEMENT

Jenkins Street Nundle Loop for Blades Only



Estimated
Tree
Trimming
(No tree
removal)

Blade Width (4.9m)

Temp Parking Exclusion
(1-2 hours off peak am)

Blades Delivered Outside of
School Pickup and Drop-off

Photo Example of Layby Holding Bay

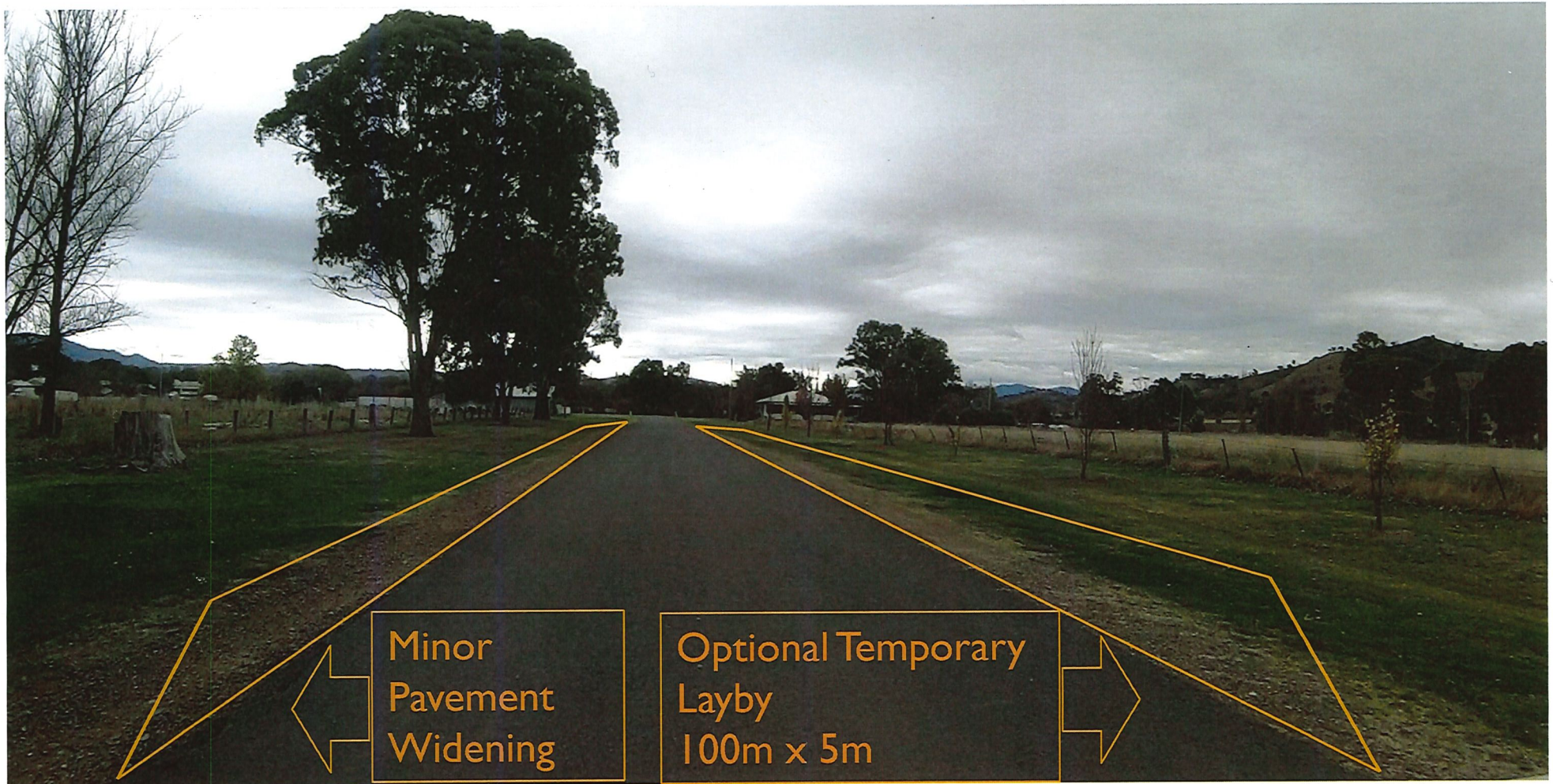


Photo Example



Photo Example

