



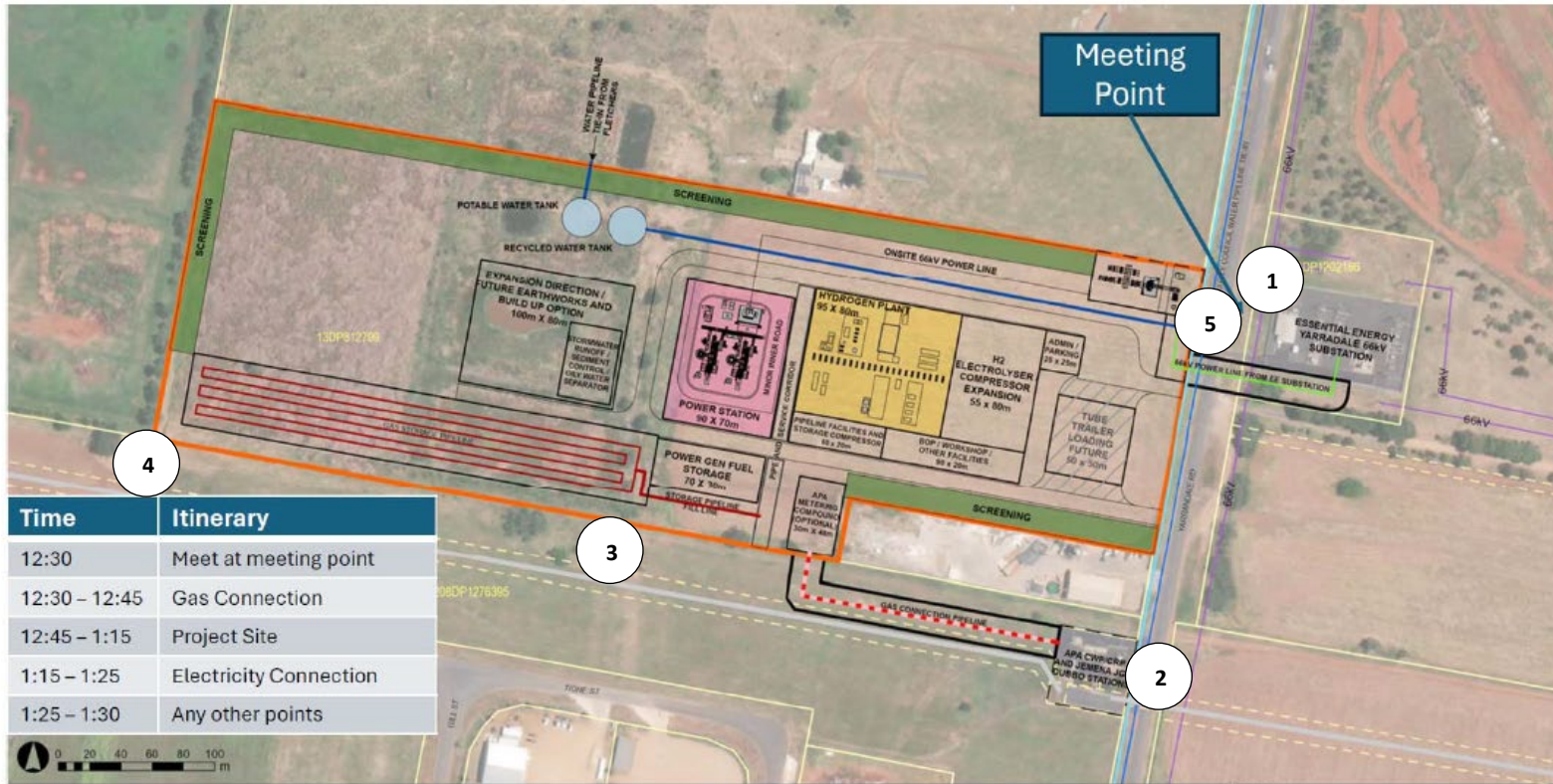
RECORD OF SITE INSPECTION

SITE INSPECTION NOTES		
Project:	Dubbo Firming Power Station (SSD-28088034)	
Meeting Location:	The Project Site and surrounding area	
Date:	Monday 15 April 2024	
Time:	12.30pm-1.30pm	
ATTENDEES		
Commissioners:	Ken Kanofski Andrew Mills Michael Chilcott	Panel Chair
Office of the IPC:	Oliver Cope	Planning Officer
Applicant Representatives:	Indran Pillay Tim Vesey	Senior Project Manager, Squadron Energy Development Manager, Energy Transition Solutions
Dubbo Regional Council Representative:	Darryll Quigley	Manager Building and Development Services
LOCATIONS AND KEY OBSERVATIONS		
<p>1) Meeting Point – In-front of Essential Energy Electricity Substation, Yarrandale Road, Dubbo</p> <ul style="list-style-type: none"> Opening statement by Panel Chair Commission observed project site location, Yarrandale Road, and neighbouring land uses <p>2) Gas connection</p> <ul style="list-style-type: none"> Commission viewed existing Dubbo Scraper Station, to which the project’s gas pipeline is proposed to be connected <p>3) Southern boundary of site</p> <ul style="list-style-type: none"> Commission walked along southern boundary of project site, and viewed proposed location of gas connection pipeline from easement Commission viewed proposed locations of gas storage pipeline and gas power generation fuel storage The Applicant outlined the depth of the gas pipeline and easement, and described the details of the proposed power station turbines <p>4) South-western boundary of site</p> <ul style="list-style-type: none"> Commission walked to south-western boundary of site, and en route viewed western portion of site, including proposed water tank locations The Applicant outlined the location and details of the proposed vegetation screening <p>5) Project substation and electricity connection</p> <ul style="list-style-type: none"> The Commission walked back along the southern boundary to Yarrandale Road and viewed the proposed location of the project substation from the adjacent road reserve. En route to the project substation the Commission viewed the location of Receiver R2’s property The Applicant described the proposed electricity connection to the existing Essential Energy Electricity Substation, with the Commission observing the latter from the adjacent road reserve Site inspection closed by Panel Chair at Meeting Point location 		
Meeting closed at: 1.30pm		



RECORD OF SITE INSPECTION

SITE INSPECTION MAP



Time	Itinerary
12:30	Meet at meeting point
12:30 – 12:45	Gas Connection
12:45 – 1:15	Project Site
1:15 – 1:25	Electricity Connection
1:25 – 1:30	Any other points



Disclaimer: Energy Transitions Solutions Pty Ltd makes no warranty in relation to the accuracy, reliability, completeness or suitability of the data and does not accept liability for any loss, damage or costs, including consequential damage, in relation to any use of the data in this map.



LEGEND	
[Orange outline]	PROJECT SITE
[Black outline]	SUBJECT LAND
[Pink box]	POWER STATION
[Yellow box]	HYDROGEN PLANT
[Green line]	66kV POWER LINE
[Red line]	GAS STORAGE PIPELINE
[Blue line]	WATER PIPELINE
[Red dashed line]	GAS CONNECTION PIPELINE
[Blue line]	EXISTING POTABLE WATER MAIN
[Light blue line]	EXISTING RECYCLED WATER MAIN
[Purple line]	EXISTING TRANSMISSION LINE
[Grey line]	EXISTING APA PIPELINE
[Yellow dashed line]	CADASTRAL BOUNDARY
[Yellow dashed line]	EASEMENT

PROJECT: Dubbo Firming Power Station			
TITLE: INDICATIVE SITE LAYOUT			
DATE: 25/01/2024	STATUS: APPROVED	PRODUCED: MVC	
DATUM: GDA2020 MGA Zone 55		APPROVED: TV	
FILE: FIS Indicative Site Layout D		REV: C	

v1.1



SITE INSPECTION PHOTOS

Dubbo Firing Power Station (SSD-28088034) – Monday 15 April 2024

1) Meeting Point

In-front of Essential Energy Electricity Substation, Yarrandale Road, Dubbo



Yarrandale Road, looking north towards neighbouring land uses



Yarrandale Road, looking south towards neighbouring land uses

2) Gas connection



Dubbo Scrapper Station, looking west (proposed gas connection pipeline location in far background)



SITE INSPECTION PHOTOS

Dubbo Firing Power Station (SSD-28088034) – Monday 15 April 2024

3) Southern boundary of site



Land within easement and along southern boundary of site, looking south-west



Looking towards approximate centre of site and locations of proposed gas storage pipeline and gas power generation fuel storage



Land within easement and along southern boundary of site, looking west



SITE INSPECTION PHOTOS

Dubbo Firing Power Station (SSD-28088034) – Monday 15 April 2024

4) South-western boundary of site



Looking northwards into project site



Looking towards approximate locations of proposed water tanks



Standing adjacent to south-west corner of site, looking towards north-west and neighbouring land uses



SITE INSPECTION PHOTOS

Dubbo Firing Power Station (SSD-28088034) – Monday 15 April 2024

5) Project substation and electricity connection



Looking west into project site from road reserve adjacent to Yarrandale Road



Looking towards approximate location of proposed project substation from road reserve, with neighbouring land uses in background



Essential Energy Electricity Substation, looking east