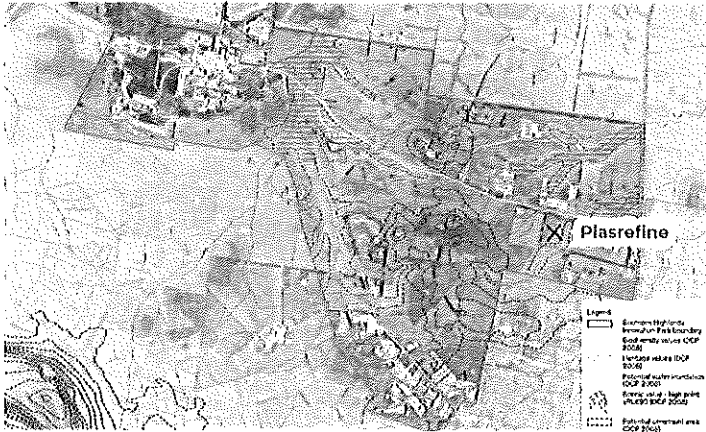


Good morning, members of the Independent Planning Commission.



My name is Gaye White. I'm a **director of WinZero—Wingecarribee Net Zero Emissions**—and an **active Landcare committee member**. Twice a year, I participate in the platypus count just downstream from this area, and I'm currently working to restore the riparian zone along this stretch of the Wingecarribee River with Landcare. Over the years, I've also collaborated closely with our Council on the master planning of the Southern Highlands Innovation Park, the SHIP, as well as other key documents like the **Regional Plan, Strategic Plan, and Local Environment Plan**. Together, our community and council have crafted a vision that balances **Innovation, Community, and Conservation**.

Today, I urge you to keep this vision intact by rejecting the PlasRefine proposal, which fundamentally opposes SHIP's purpose.



This constraints map shows the Plasrefine site sits in flood-prone zones, near two creeks that flow into the Wingecarribee River—a crucial part of Sydney's drinking water catchment. Flood risks mean pollutants could threaten both our ecosystem and Sydney's water supply—directly opposing SHIP's goal of highlighting and protecting these resources.

Let's Protect the Vision:

Innovation
Community
Conservation



PlasRefine is far better suited to a New South Wales **Special Activation Precinct (SAP)**, designed to host large industrial facilities with appropriate infrastructure, clustering, and streamlined approvals.

Quite frankly, **it's mystifying** that after Council and volunteers have invested so much time, effort and \$270,000 in state funding into the SHIP's masterplan, the State Government would now disregard that work and recommend PlasRefine for approval.

I urge the Commission to uphold the SHIP's purpose, protect our environment, and keep Sydney's drinking water safe. Our Federal, State, and Local Government representatives all **oppose** PlasRefine in this location

THIS is NOT THE RIGHT SITE.

Thank you.