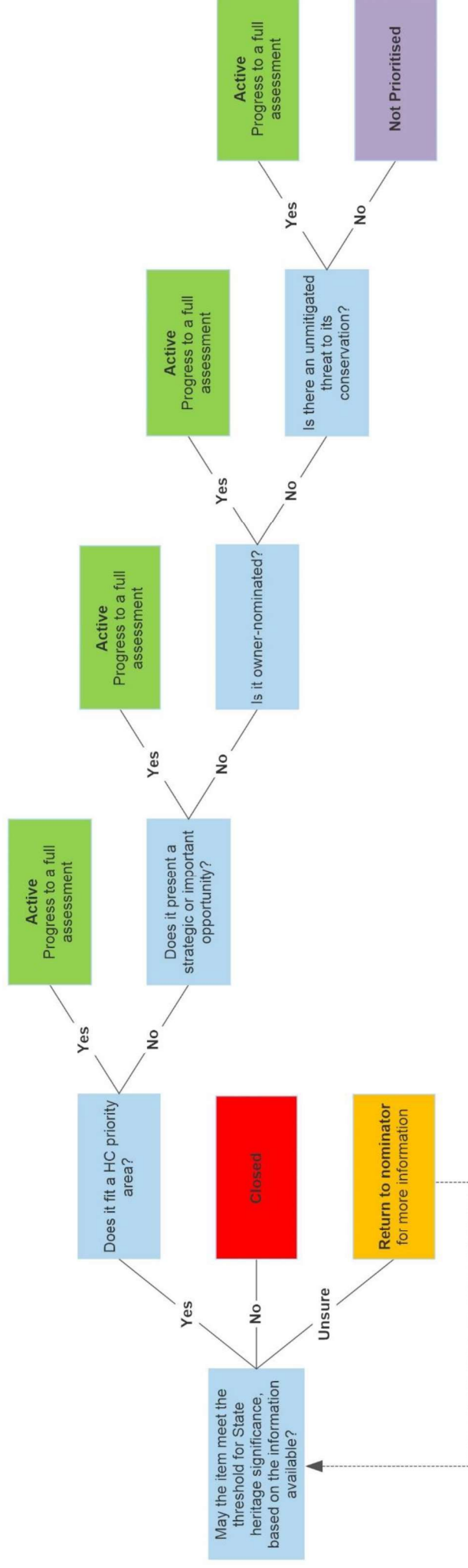


New SHR Nominations SHRC Preliminary Assessment Process (Last Revised October 2021)



State heritage significance threshold: Items that may meet the threshold for State heritage significance based on the information available.

Priority areas for SHR listing: Nominations that fit a specific priority area for SHR listing as endorsed by the Heritage Council during a listings program. The Heritage Council may endorse one or several priority areas during a listings program. There may also be times when the Heritage Council does not have an endorsed priority area for SHR listing. The current priority areas are First Nations heritage (including Frontier Conflict) and LGBTIQ+ heritage.

Strategic or important opportunities: Nominations that do not fit an endorsed priority area for SHR listing, but which nonetheless represent a strategic or important opportunity to progress. This may include nominations that address other known gaps in the representativeness of the SHR (e.g. former thematic programs of migrant heritage, rural heritage, cultural landscapes, and the Modern Movement), as well as community aspirations and government priorities.

Owner-nominated: Nominations submitted by the owner or on their behalf, or where owner support has been indicated.

Threat: Nominations which face a threat to the conservation of an item that is not mitigated by alternative heritage protection. This may include, but is not limited to, lack of protection by alternative statutory heritage mechanisms (e.g. LEP, s.170 Heritage and Conservation Registers).

FAST-TRACK:

Nominations for **SHR amendments and removals** are presented to the SHRC for *noting* only – they do not undergo a preliminary assessment as all warrant due consideration and are made Active.

HNSW or the SHRC may also identify **nominations that require urgent consideration** for inclusion on the current work plan (e.g. Minister nomination or an item is considered to be under immediate threat of harm – to be determined on a case by case basis).