

20210374.1/0703A/R0/AW

7/03/2024

HammondCare
Level 4
207B Pacific Highway
ST LEONARDS NSW 2065

Attn: Alex Lisney

Greenwich Hospital - Response to RFI for Waste Collection / Loading Dock Usage

This letter has been prepared to comment on potential noise impacts arising from the proposed waste management of Greenwich Hospital. Specifically, it is proposed that the loading dock for waste collection will be in use 24 hours per day, 7 days per week. Whilst these are the available operational hours, specific times for waste collection have not been specified.

Currently, waste collection is undertaken at an external loading dock at the rear of the existing hospital, adjacent to the kitchen/laundry and Pallister House. Primary access to this loading dock is through the westernmost access road at the signalised intersection, with vehicles travelling through the site to the rear of the development. Operation of this loading dock is 24/7.

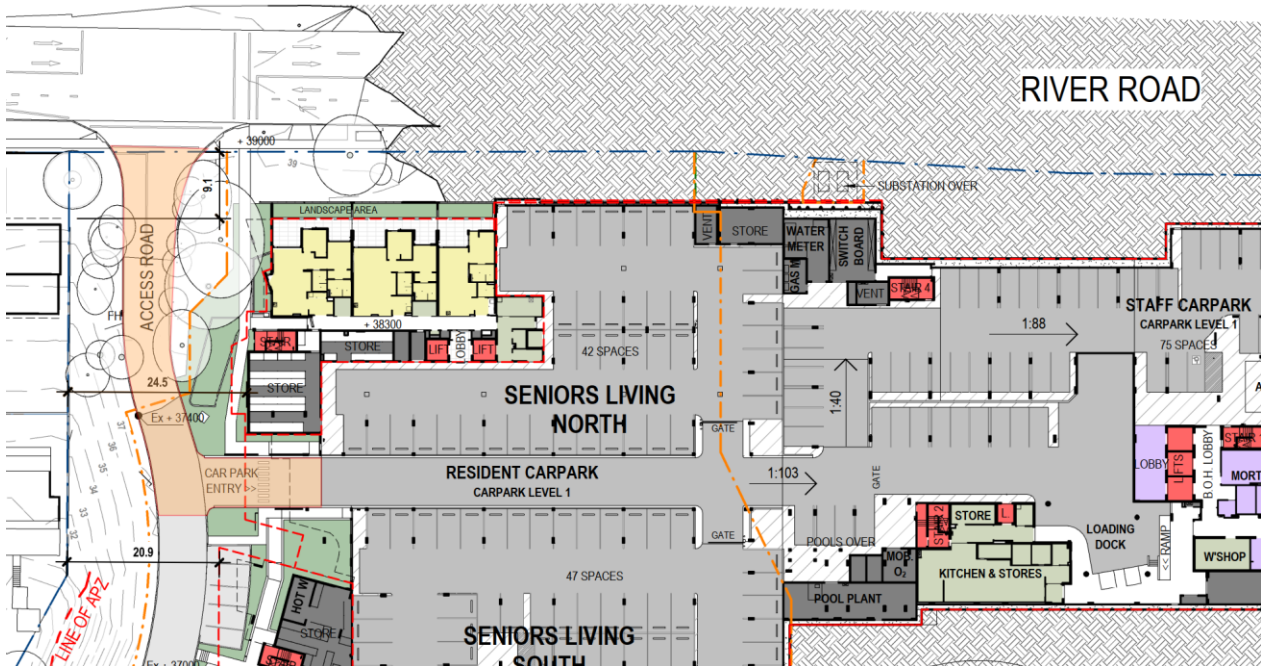


SYDNEY
9 Sarah St
MASCOT NSW 2020
(02) 8339 8000

ABN 98 145 324 714
www.acousticlogic.com.au

The information in this document is the property of Acoustic Logic Pty Ltd 98 145 324 714 and shall be returned on demand. It is issued on the condition that, except with our written permission, it must not be reproduced, copied or communicated to any other party nor be used for any purpose other than that stated in particular enquiry, order or contract with which it is issued.

The proposed loading dock is located internally within the basement of the site, with access through the same signalised intersection as currently utilised – refer figure below.



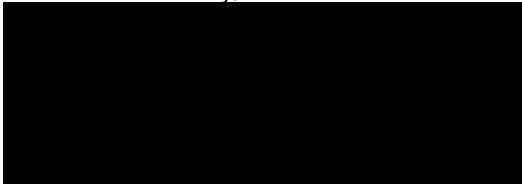
When considering noise from waste collection, we note the following:

- There is no change in the proposed hours of waste collection.
- Access/roadways to loading dock is unchanged. Also noting that the external distance of travel required for waste collection vehicles is significantly reduced with the proposed scheme.
- The future loading dock will be enclosed reducing and minimising noise to residents from the emptying of bins, which are typically the loudest associated activities.
- The quantity of deliveries is expected to increase, approximately doubling to account for the additional capacity of the redeveloped hospital.

In consideration of the above, noise impacts from waste collection is not likely to increase levels from current operations, with reduced impacts expected from the emptying of bins (given the proposed loading dock is enclosed). 24-hour operation of the loading dock is consistent with current site operation, and can be supported.

Please contact us should you have any further queries.

Yours faithfully,



Acoustic Logic Pty Ltd
Alex Washer