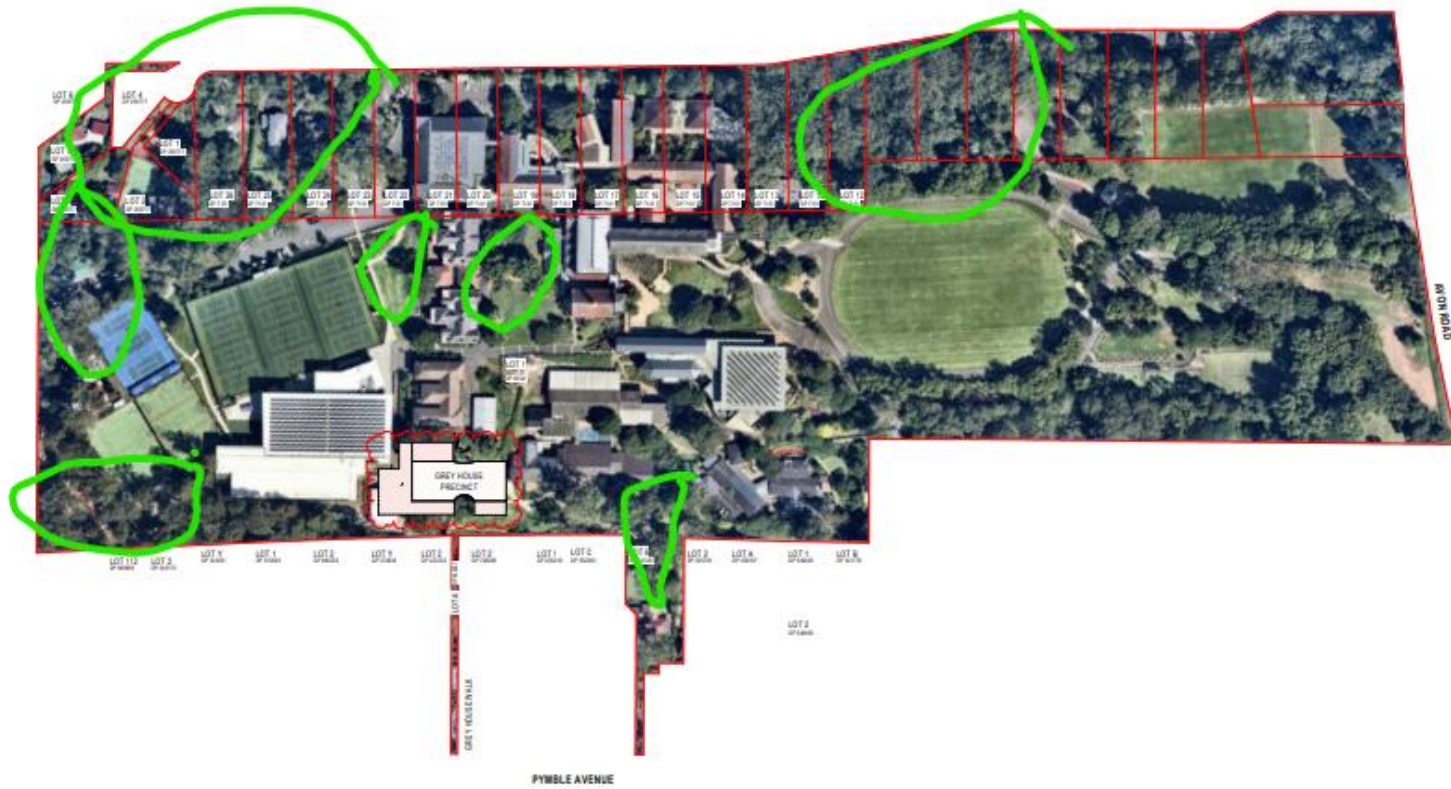


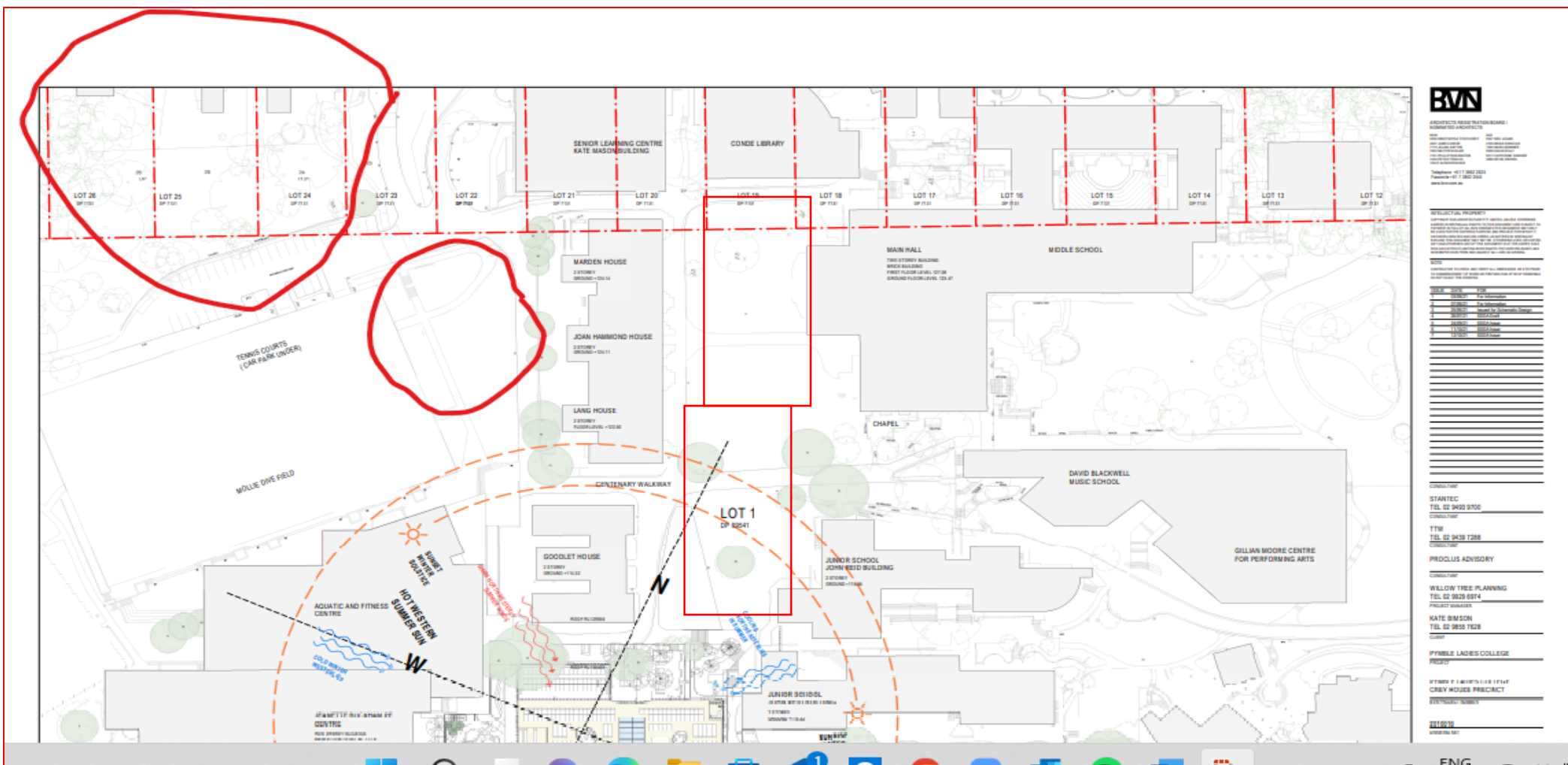
# Grey House Precinct

Joy Li, 59B, Pymble Avenue

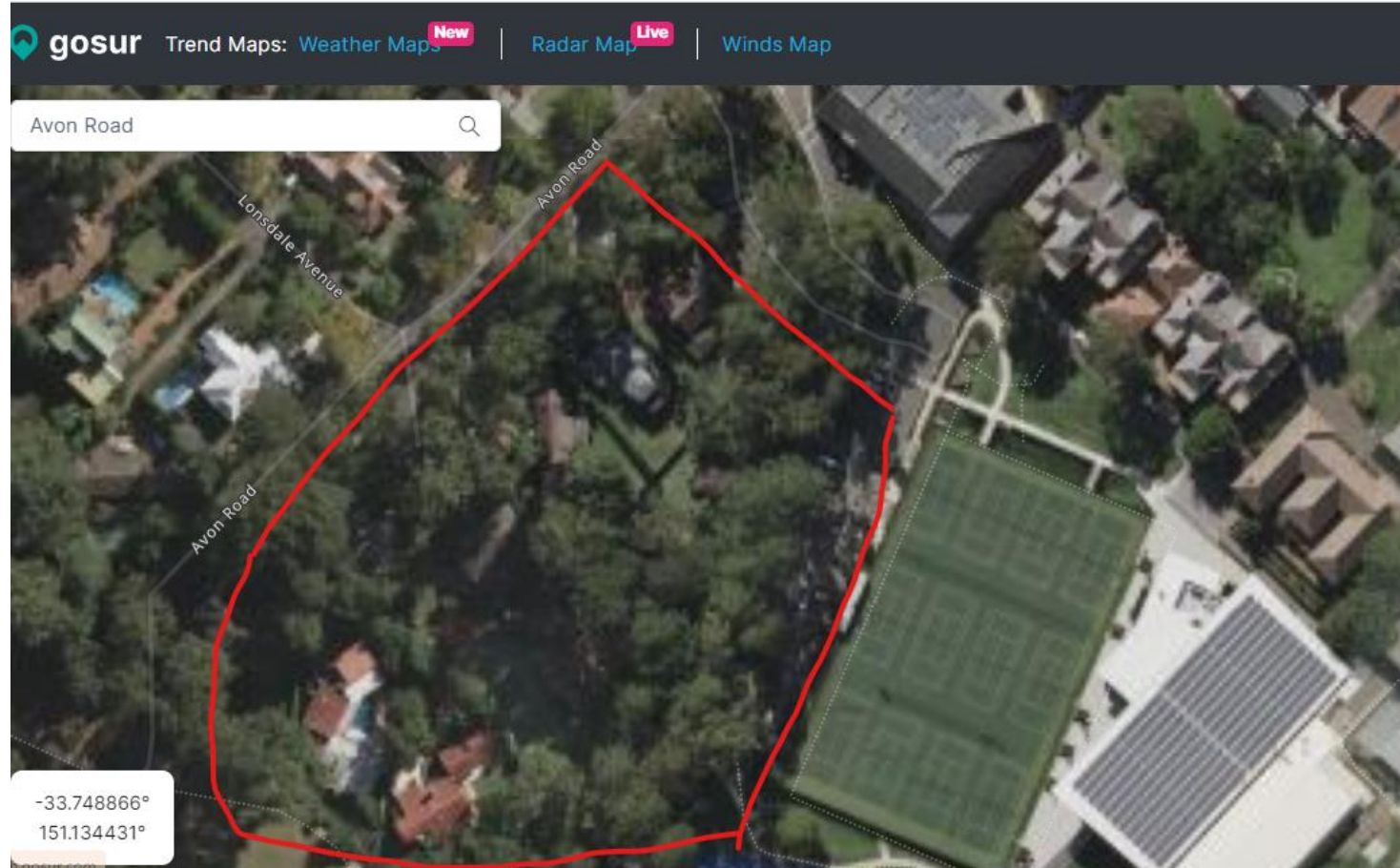
# Siting of the Building

[illegible]

# Siting of the Building



# Siting of the building – Next to Cenetary car park

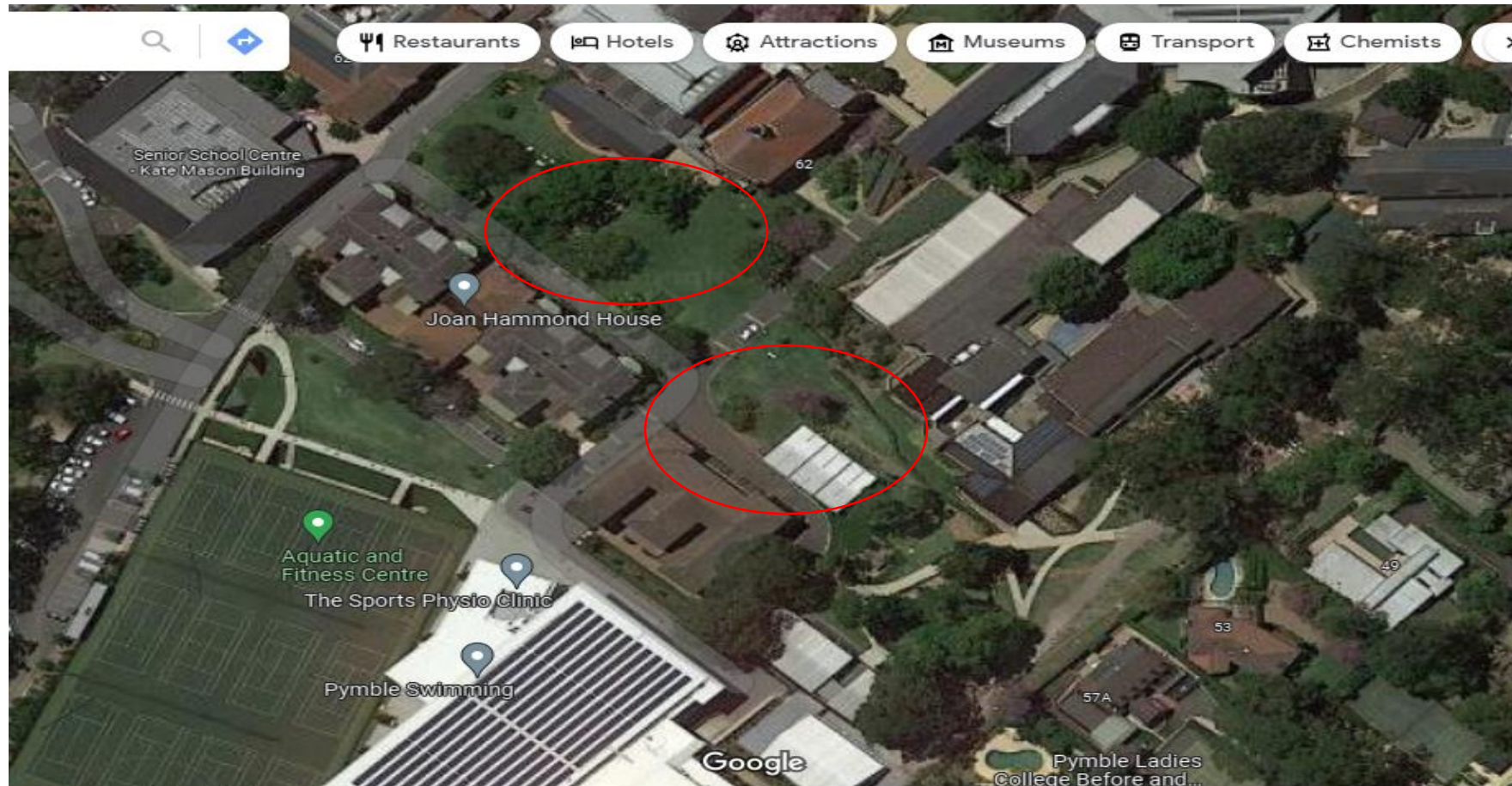




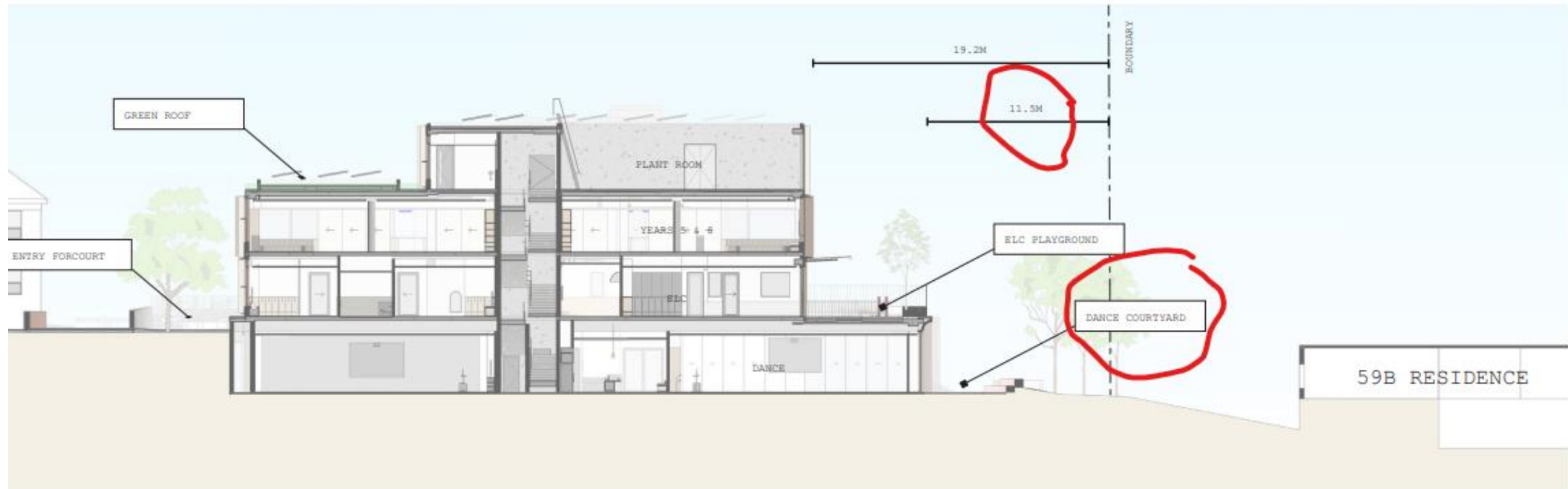
# Siting of the building – between Goodlet and Junior School



# Siting of the building – Boarding houses, library and Junior School



# Setback of the Building





# Visual Impact and Privacy



Figure 5: Drone at Position 1 - RL 135.2m - Looking South



# Visual Impact and Privacy



Figure 24: Viewpoint 1 - No. 598 Pymble Ave, Pymble - Looking North (Photomontage)

Approx Angle of View - 67°

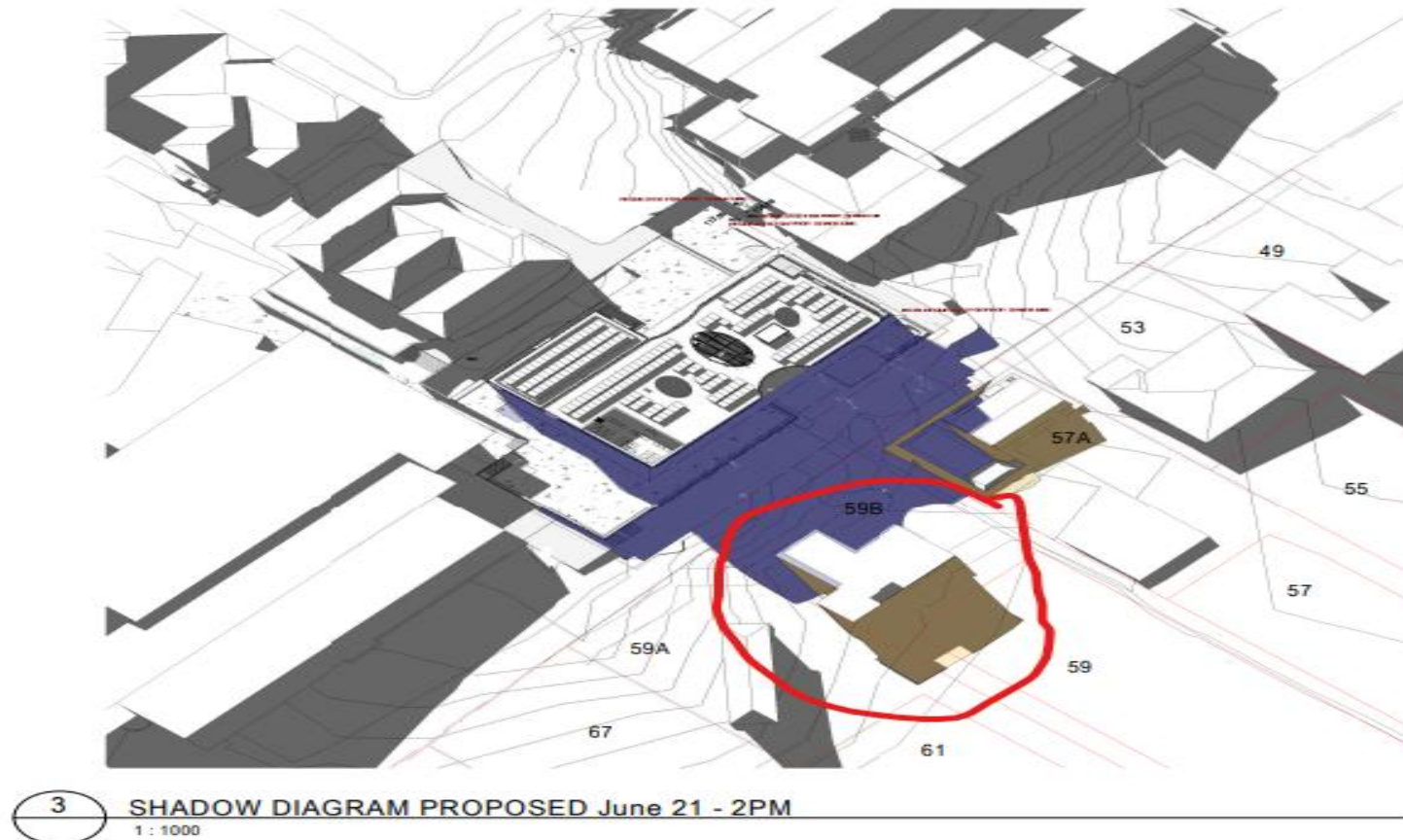
AUGUST 2021 REV B Job no. 210521  
Drawn 71

# Solar Access and Overshadowing – 21 Jun 2pm before modification

06.13 SHADOW PLAN 21 JUNE 2PM

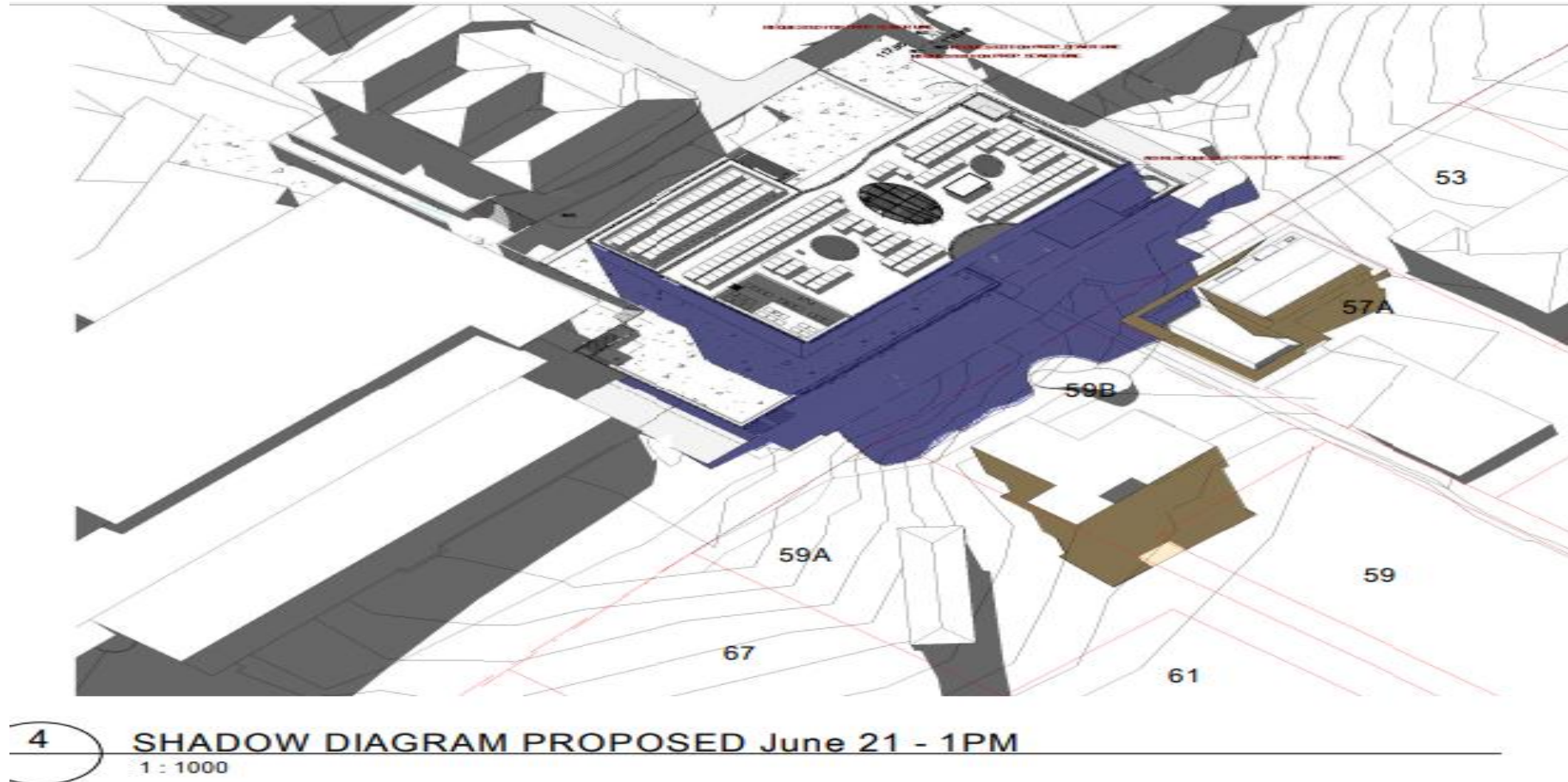


# Solar Access and Overshadowing – 21 June 2pm post modification





# Solar Access and Overshadowing – 21 June 1pm post modification



# Construction Noises



# Continuous and endless developments



SOUTH ELEVATION