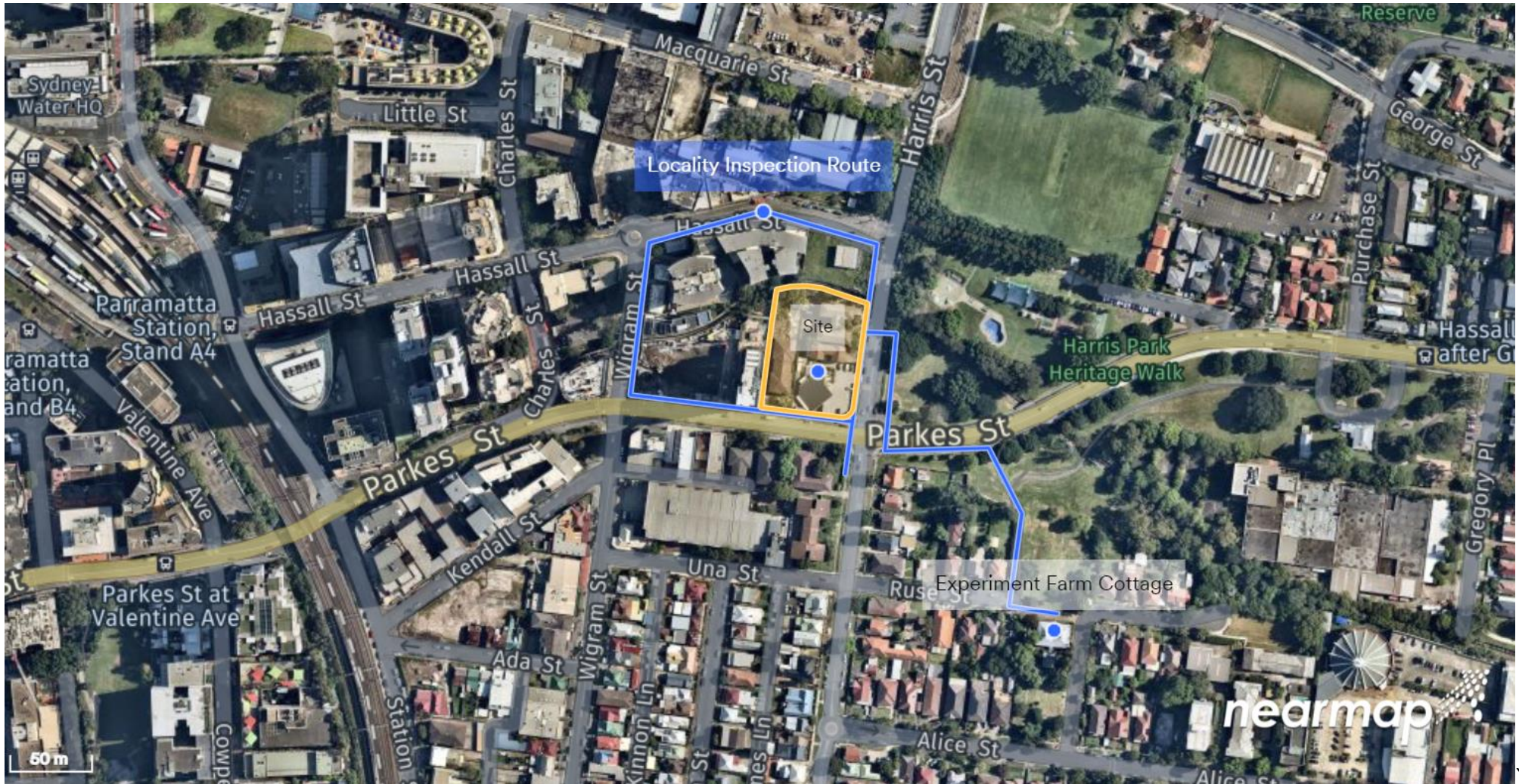




RECORD OF SITE AND LOCALITY INSPECTION

SITE AND INSPECTION NOTES		
Project:	Gateway Determination Review - Parkes and Harris St, Harris Park (PP-2021-5178)	
Meeting Location:	Locality of site 24 and 26-30 Parkes Street, and 114-116 Harris Street, Harris Park 2150	
Date:	1 March 2022	
Time:	11.00 am – 11.30 am	
ATTENDEES		
Commissioners:	Professor Helen Lochhead	Panel Chair
Office of the IPC:	Lindsey Blecher Heather Warton	Senior Planning Officer Consultant Planner
Applicant:	Not in attendance – internal IPC site inspection	N/A
Community Group Representatives:	Not in attendance – internal IPC site inspection	N/A
LOCATIONS AND KEY OBSERVATIONS		
1) Experiment Farm Cottage Observed Experiment Farm Cottage, its curtilage and the surrounding built form. Noted distance to the site.		
2) Locality of site Viewed the site from Parkes Street and Harris Street and observed the existing buildings at the site. Noted the relationship of the site to neighbouring properties and James Ruse Reserve. Viewed nearby development on Parkes Street, Harris Street, Wigram Street and Hassall Street, noting the heights of buildings on these streets.		
Meeting closed at: 11.30 am		

SITE AND LOCALITY INSPECTION MAP





SITE INSPECTION PHOTOS

01 March 2022

Curtilage of Experiment Farm Cottage



Site viewed from Harris Street



Site viewed from Harris Street



Site viewed from Harris Street



View westward along Parkes Street



Site viewed from Harris and Parkes Streets

