

**- LEGEND -**

<span style="color: red;">●</span> NOW Registered Bore	<span style="border: 1px solid red; display: inline-block; width: 15px; height: 10px;"></span> Project Boundary
<span style="color: blue;">●</span> Monitoring Bore	<span style="border-bottom: 1px solid black; width: 20px; display: inline-block;"></span> Model Grid
<span style="color: brown;">●</span> VW Piezometer	<span style="background-color: lightblue; border: 1px solid blue; display: inline-block; width: 15px; height: 10px;"></span> Model River Cell
<span style="color: blue;">—</span> River	<span style="background-color: blue; border: 1px solid blue; display: inline-block; width: 15px; height: 10px;"></span> Dam / Reservoir
<span style="color: blue;">—</span> Creek	<span style="border-bottom: 1px dashed black; width: 20px; display: inline-block;"></span> Fault / Fold
<span style="color: blue;">—</span> Watercourse	



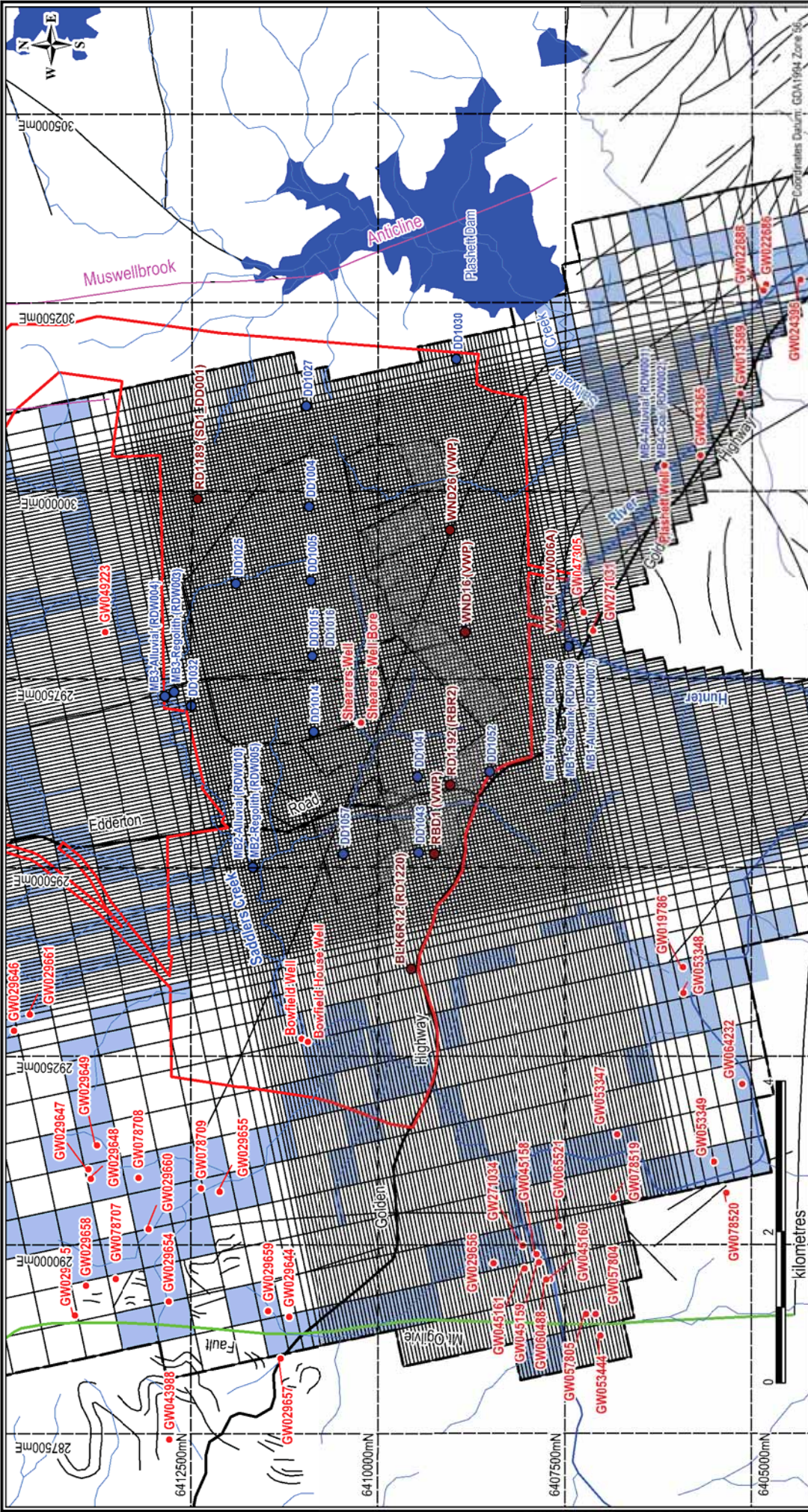
**AUSTRALASIAN GROUNDWATER & ENVIRONMENTAL CONSULTANTS PTY LTD**  
 LEVEL 2, 15 MALLON ST, BOWEN HILLS, 4006, AUSTRALIA

**TITLE:** DRAYTON SOUTH MINE PROJECT EA  
 GROUNDWATER ASSESSMENT  
 GROUNDWATER FLOW MODEL EXTENT

<b>CLIENT:</b> Anglo American		<b>OFFICE:</b> Brisbane	
<b>DRAWN BY:</b> TMM	<b>SCALE:</b> 1: 100,000 (A4)	<b>PROJECT No:</b> G1544	<b>DRAWING No:</b> 14
<b>APPROVED BY:</b>		<b>DATE:</b> October 2012	

G:\Groundwater\Jost\G1544\_Drayton South\GIS\Workspaces\15\_Groundwater Flow Model Extent.wor





**AUSTRALASIAN GROUNDWATER & ENVIRONMENTAL CONSULTANTS PTY LTD**  
 LEVEL 2, 15 MILLION ST, BOWEN HILLS, 4006, AUSTRALIA

**TITLE: DRAYTON SOUTH MINE PROJECT EA  
 GROUNDWATER ASSESSMENT  
 GROUNDWATER FLOW MODEL GRID**

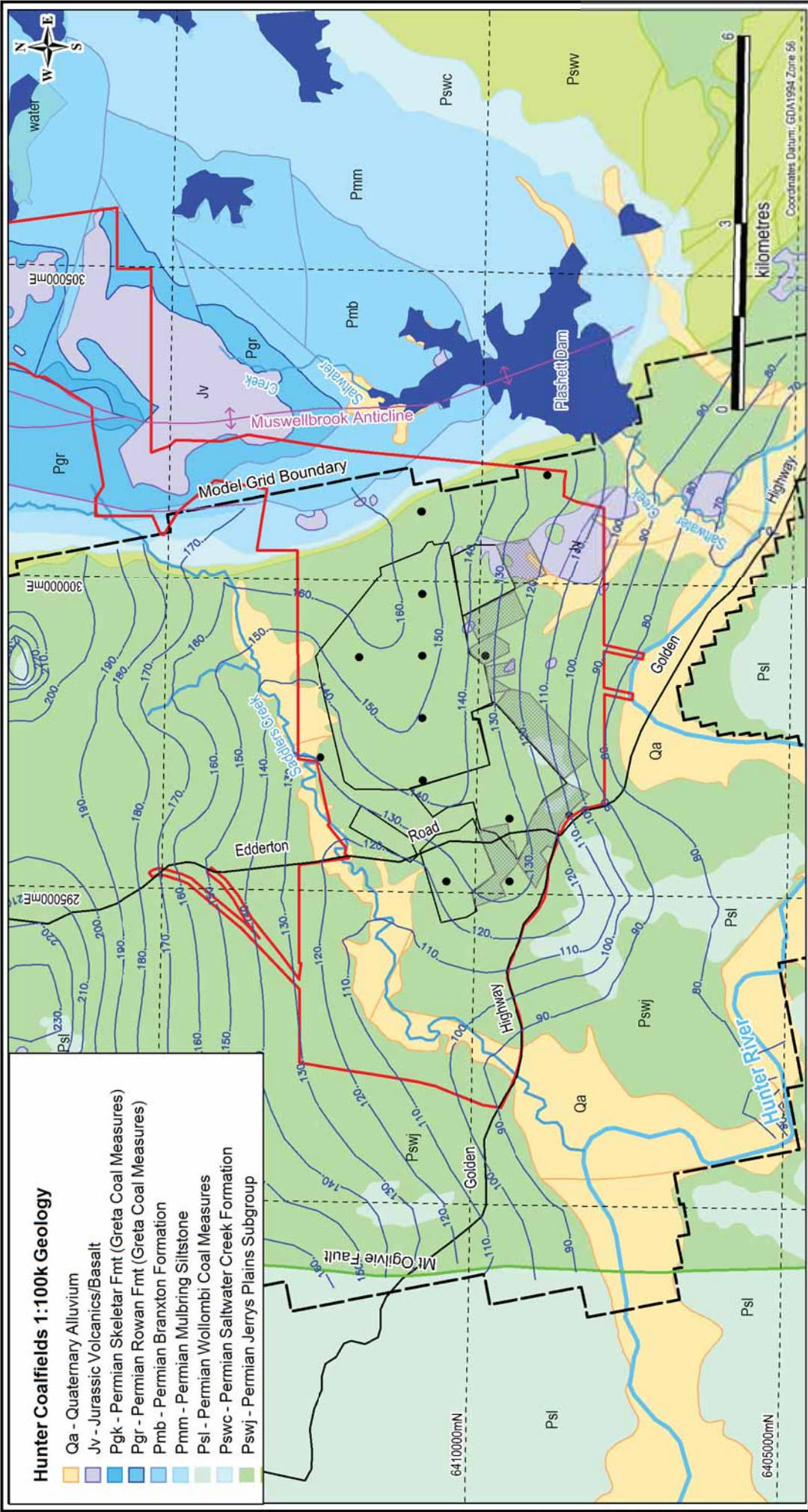
**CLIENT: Anglo American**  
**DRAWN BY: TMM**    **SCALE: 1 : 75,000 (A4)**    **PROJECT No: G1544**  
**APPROVED BY:**    **DATE:** October 2012

**OFFICE: Brisbane**  
**DRAWING No: 15**

**- LEGEND -**

- Project Boundary
- Model River Cell
- Major River
- Model Grid
- Creek
- Watercourse
- NOW Registered Bore
- Monitoring Bore Location
- VW Piezometer
- Dam / Reservoir





**Hunter Coalfields 1:100k Geology**

- Qa - Quaternary Alluvium
- Jv - Jurassic Volcanics/Basalt
- Pgk - Permian Skeletal Fmt (Greta Coal Measures)
- Pgr - Permian Rowan Fmt (Greta Coal Measures)
- Pmb - Permian Branxton Formation
- Pmm - Permian Mulbring Siltstone
- Psi - Permian Wollombi Coal Measures
- Pswc - Permian Saltwater Creek Formation
- Pswj - Permian Jerrys Plains Subgroup

**- LEGEND -**

- Monitoring Bores
- Predicted Groundwater Heads (mAH)
- Model Grid Boundary
- Project Boundary
- Proposed Highway Mining
- Proposed Open Cut Pit
- Major Road
- Major River
- Creek
- Dam / Reservoir

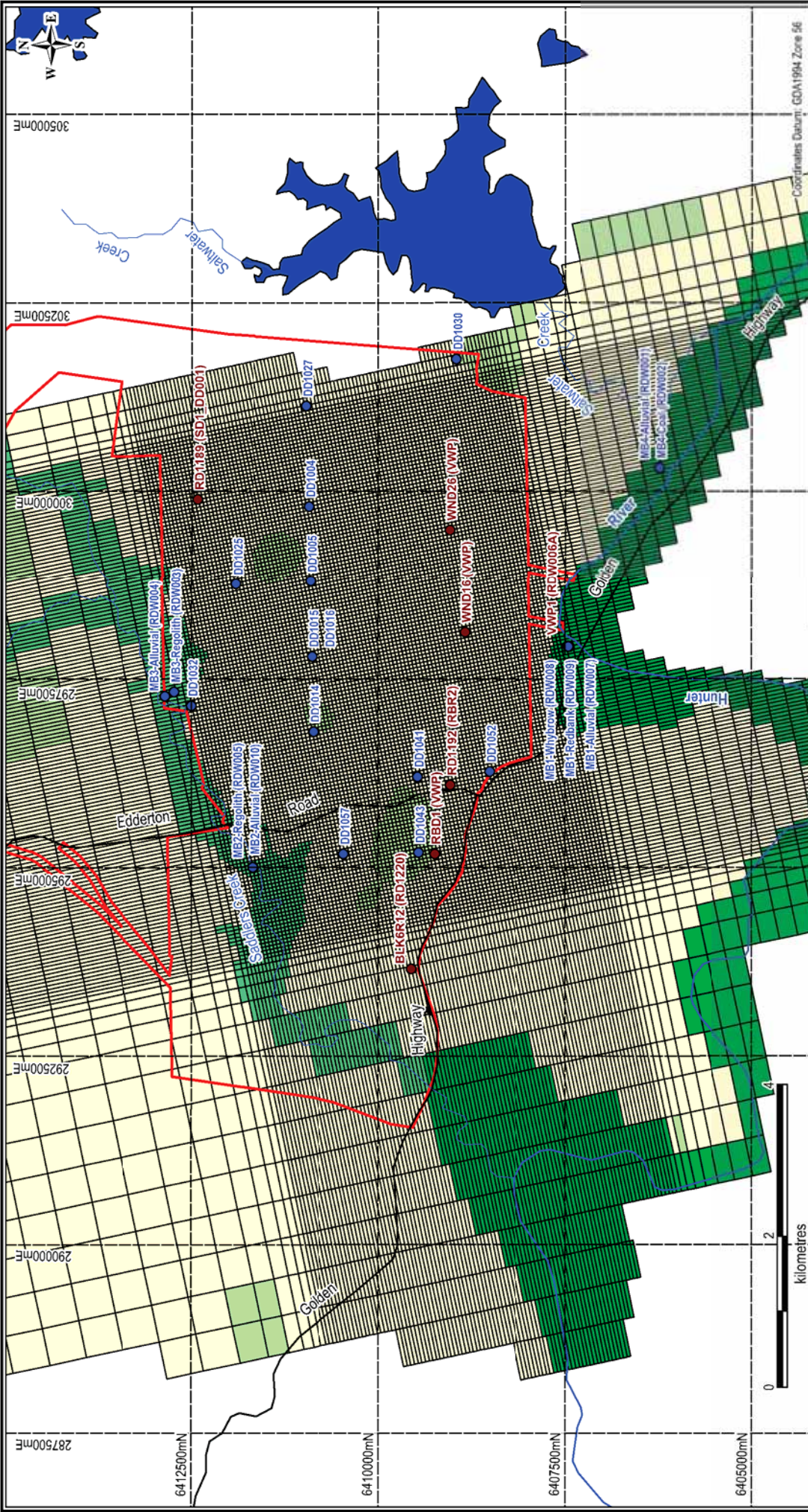


**AUSTRALASIAN GROUNDWATER & ENVIRONMENTAL CONSULTANTS PTY LTD**  
 LEVEL 2, 15 MILLION ST, BOWEN HILLS, 4006, AUSTRALIA

**TITLE: DRAYTON SOUTH MINE PROJECT EA  
 GROUNDWATER ASSESSMENT  
 STEADY STATE GROUNDWATER HEADS - LAYER 1**

CLIENT: Anglo American	SCALE: 1 : 90,000 (A4)	PROJECT No: G1544	OFFICE: Brisbane
DRAWN BY: CJ	DATE: April 2012	APPROVED BY:	DRAWING No: 16





**AUSTRALASIAN GROUNDWATER & ENVIRONMENTAL CONSULTANTS PTY LTD**  
 LEVEL 2, 15 MILLION ST, BOWEN HILLS, 4006, AUSTRALIA

**AGLE**

**TITLE:** DRAYTON SOUTH MINE PROJECT EA  
 GROUNDWATER ASSESSMENT  
 MODEL RECHARGE ZONES

**CLIENT:** Anglo American  
**DRAWN BY:** TMM **SCALE:** 1 : 75,000 (A4) **PROJECT No:** GT544  
**APPROVED BY:** **DATE:** April 2012

**OFFICE:** Brisbane  
**DRAWING No:** 17

**- LEGEND -**

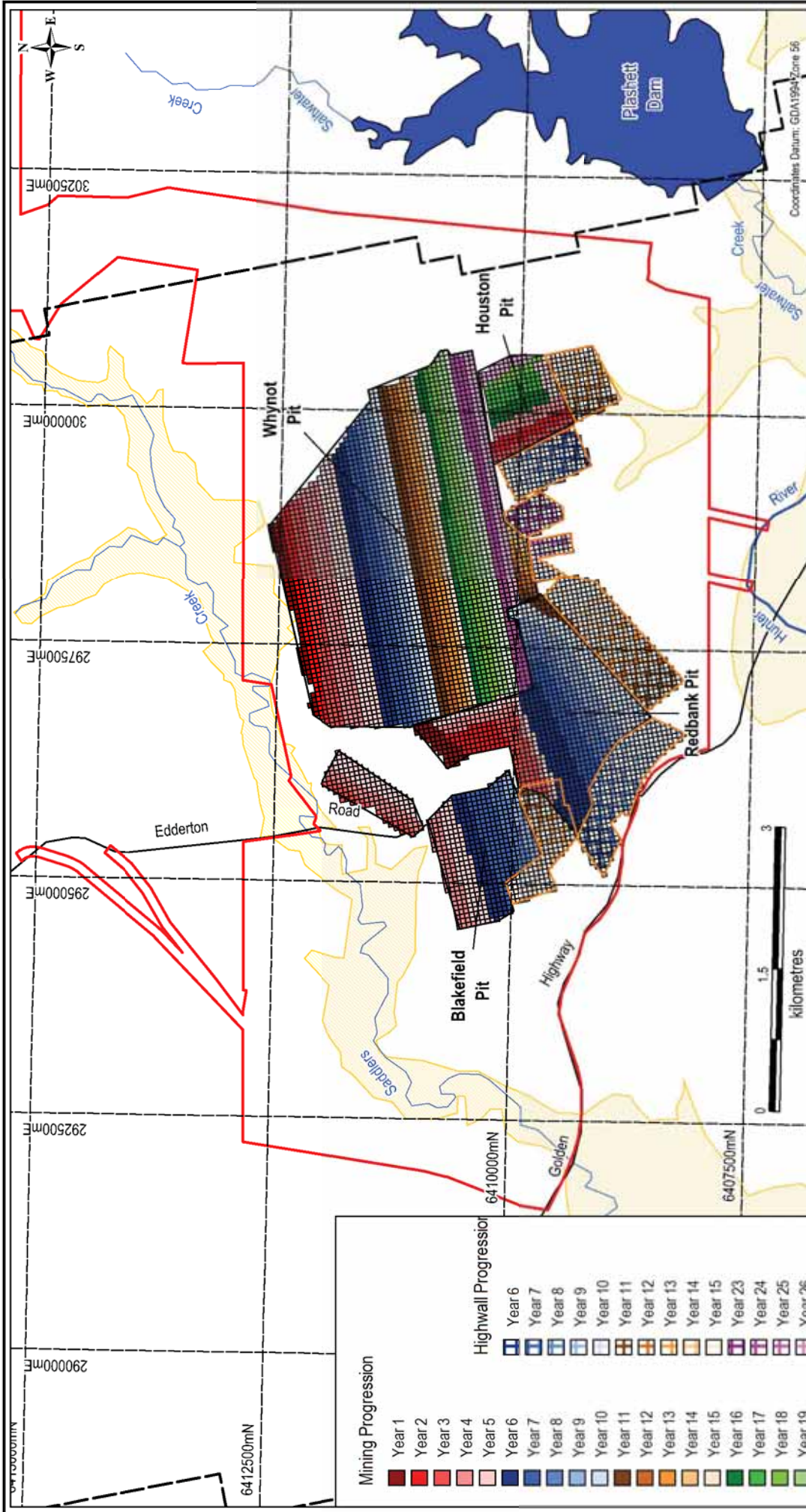
- Project Boundary
- Dam / Reservoir
- Major Road
- Monitoring Bore Location
- VW Piezometer
- Major River
- Creek

**Calibrated Recharge**

- 27.7 - 34.6mm/a, 4.2 - 5.2% annual rainfall
- 13.9 - 27.7mm/a, 2.1 - 4.2% annual rainfall
- 6.9 - 13.9mm/a, 1.0 - 2.1% annual rainfall
- 0.0 - 6.9mm/a, 0.0 - 1.0% annual rainfall

Coordinates Datum: GDA1994 Zone 56





**AUSTRALASIAN GROUNDWATER & ENVIRONMENTAL CONSULTANTS PTY LTD**  
 LEVEL 2, 15 MILLION ST, BOWEN HILLS, 4006, AUSTRALIA

**AGLE**

**TITLE: DRAYTON SOUTH MINE PROJECT EA  
 GROUNDWATER ASSESSMENT  
 PROPOSED MINING SCHEDULE**

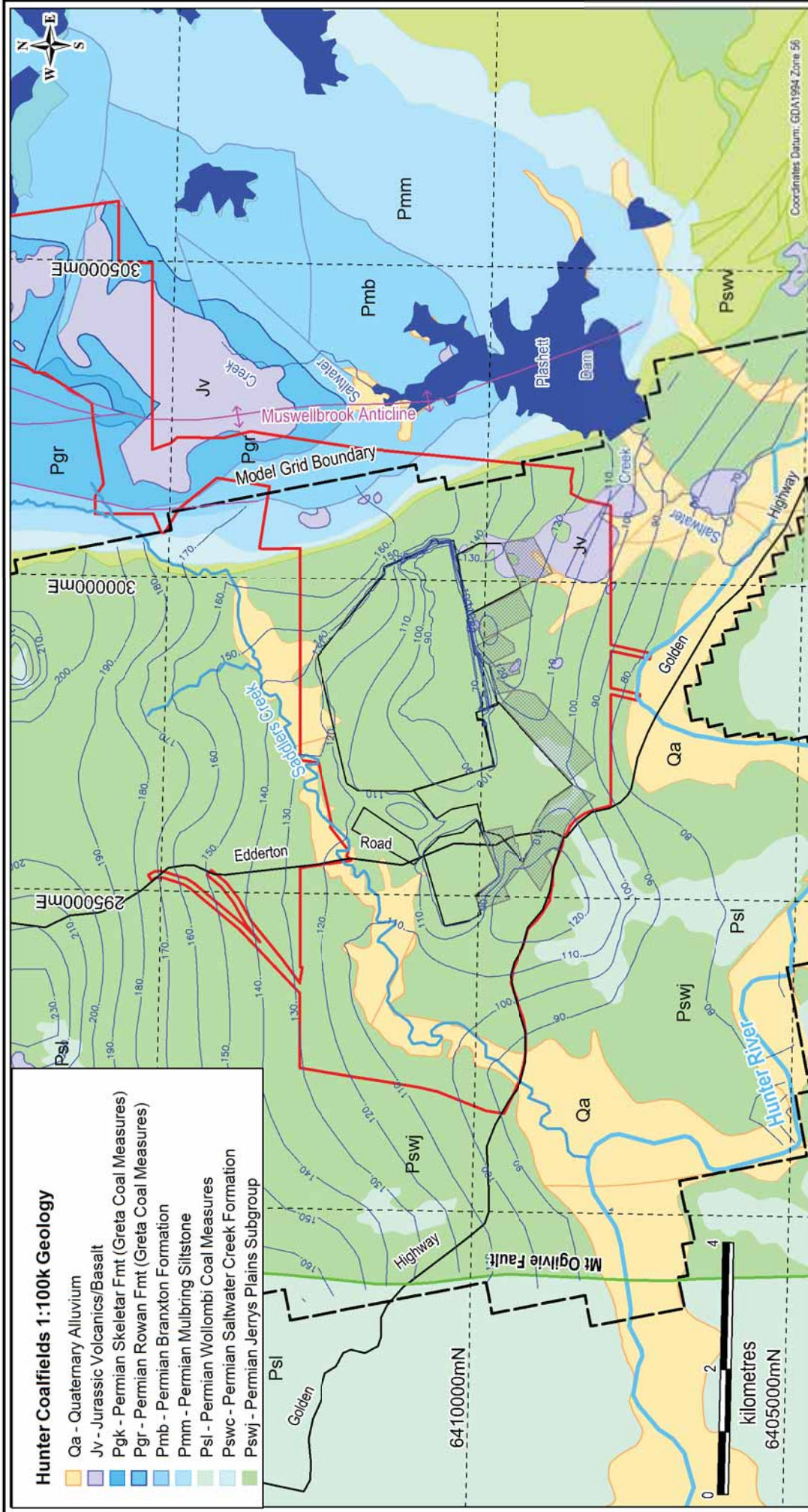
**CLIENT: Anglo American**  
**DRAWN BY: TM**    **SCALE: 1 : 60,000 (A4)**    **PROJECT No: G1544**  
**APPROVED BY:**    **DATE: April 2012**

**OFFICE: Brisbane**    **DRAWING No: 18**

**- LEGEND -**

- Project Boundary
- Area of Alluvium (Oa)
- Major Road
- Major River
- Creek
- Model Boundary
- Proposed Highwall Mining
- Proposed Open Cut Pit





**Hunter Coalfields 1:100k Geology**

- Qa - Quaternary Alluvium
- Jv - Jurassic Volcanics/Basalt
- Pgk - Permian Skeletal Fmt (Greta Coal Measures)
- Pgr - Permian Rowan Fmt (Greta Coal Measures)
- Pmb - Permian Branxton Formation
- Pmm - Permian Mulbring Siltstone
- Psl - Permian Wollombi Coal Measures
- Pswc - Permian Saltwater Creek Formation
- Pswj - Permian Jerrys Plains Subgroup

**- LEGEND -**

- Project Boundary
- Dam / Reservoir
- Model Grid Boundary
- Proposed Highway Mining
- Proposed Open Cut Pit
- Major River
- Creek
- Major Road

**AUSTRALASIAN GROUNDWATER & ENVIRONMENTAL CONSULTANTS PTY LTD**  
 LEVEL 2, 15 MILLION ST, BOWEN HILLS, 4006, AUSTRALIA

**AGLE**

**TITLE: DRAYTON SOUTH MINE PROJECT EA  
 GROUNDWATER ASSESSMENT  
 PREDICTED GROUNDWATER HEADS - LAYER 1 - END OF MINING**

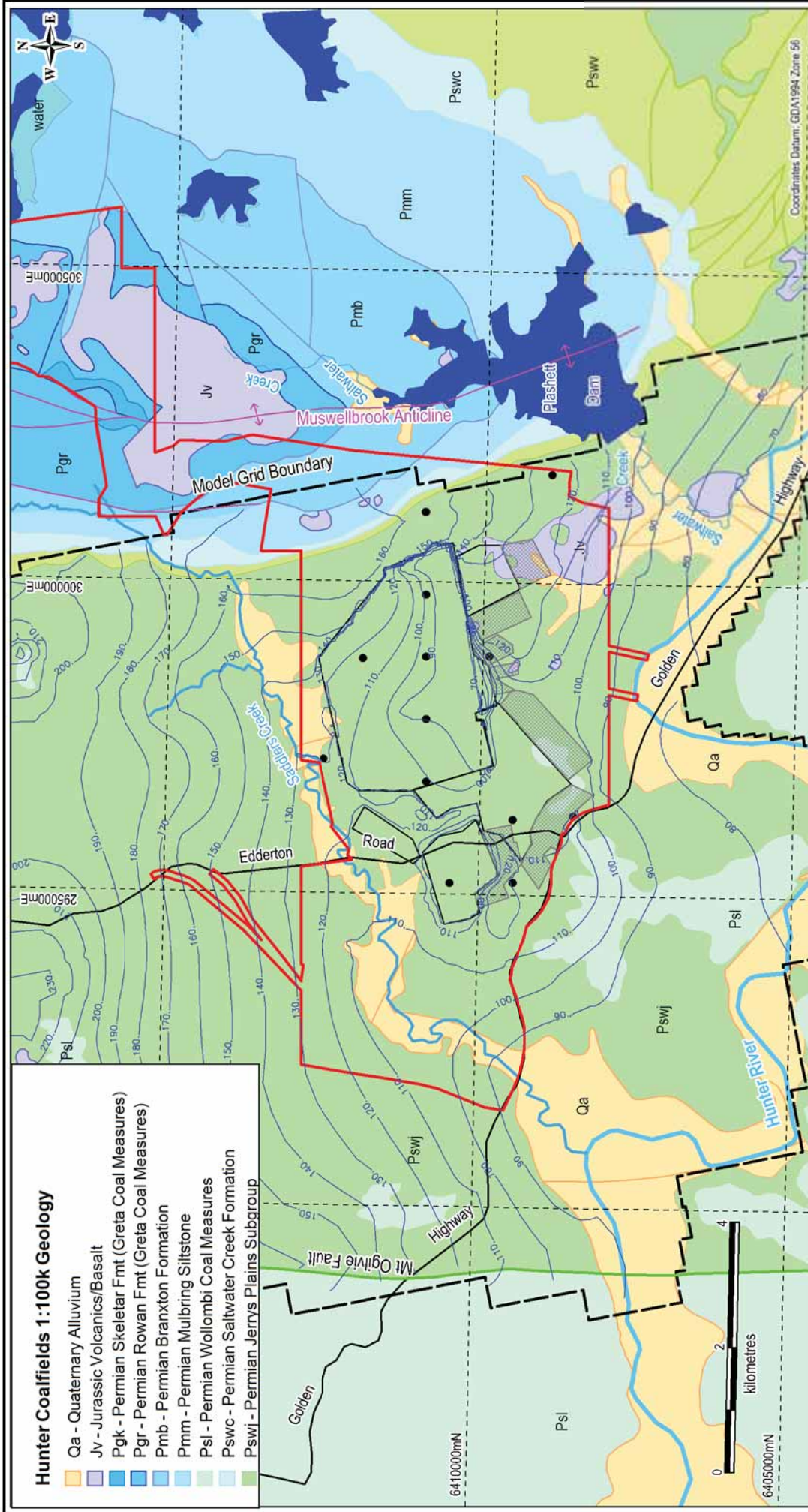
**CLIENT: Anglo American**  
**DRAWN BY: CJ**  
**APPROVED BY:**

**PROJECT No: G1544**  
**SCALE 1 : 90,000 (A4)**  
**DATE: April 2012**

**OFFICE: Brisbane**  
**DRAWING No: 19**

Coordinates Datum: GDA1994 Zone 56





**Hunter Coalfields 1:100k Geology**

- Qa - Quaternary Alluvium
- Jv - Jurassic Volcanics/Basalt
- Pgk - Permian Skeletal Fmt (Greta Coal Measures)
- Pgr - Permian Rowan Fmt (Greta Coal Measures)
- Pmb - Permian Branxton Formation
- Pmm - Permian Mulbring Siltstone
- Psl - Permian Wollombi Coal Measures
- Pswc - Permian Saltwater Creek Formation
- Pswj - Permian Jerrys Plains Subgroup

**- LEGEND -**

- Predicted Groundwater Contour (mAHd)
- Mine Lease Boundary
- Model Grid Boundary
- Dam / Reservoir
- Major River
- Creek
- Major Road
- Proposed Highwall Mining
- Proposed Open Cut Pit

**AUSTRALASIAN GROUNDWATER & ENVIRONMENTAL CONSULTANTS PTY LTD**  
 LEVEL 2, 15 MILLION ST, BOWEN HILLS, 4006, AUSTRALIA

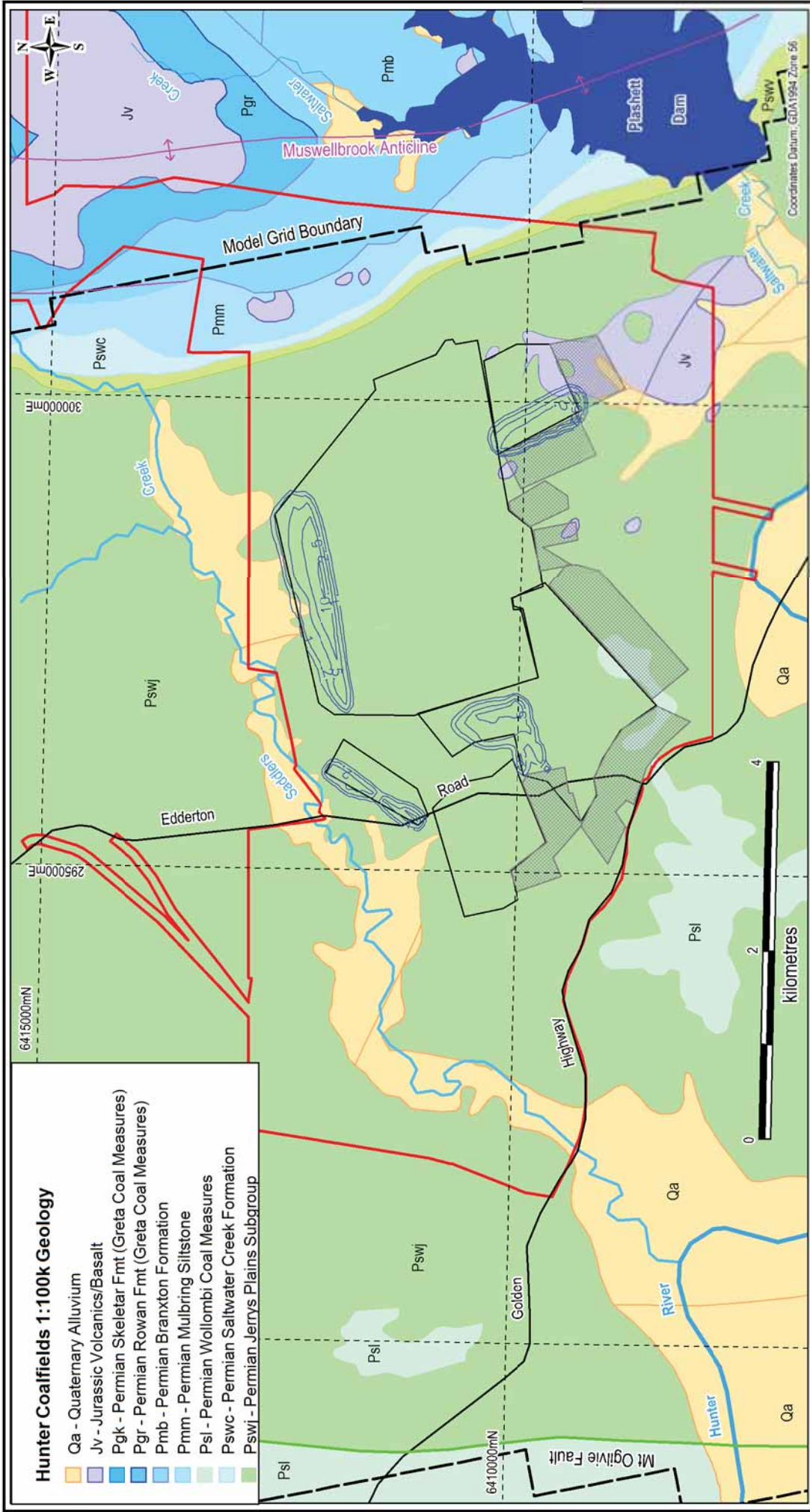
**AGLE**

**TITLE:** DRAYTON SOUTH MINE PROJECT EA  
 GROUNDWATER ASSESSMENT  
 PREDICTED GROUNDWATER HEADS - LAYER 5 - END OF MINING

**CLIENT:** Anglo American  
**DRAWN BY:** CJ  
**SCALE:** 1 : 90,000 (A4)  
**PROJECT No:** GT544  
**OFFICE:** Brisbane

**APPROVED BY:** \_\_\_\_\_  
**DATE:** April 2012  
**DRAWING No:** 20





**Hunter Coalfields 1:100k Geology**

- Qa - Quaternary Alluvium
- Jv - Jurassic Volcanics/Basalt
- Pgk - Permian Skeletal Fmt (Greta Coal Measures)
- Pgr - Permian Rowan Fmt (Greta Coal Measures)
- Pmb - Permian Branxton Formation
- Pmm - Permian Mulbring Siltstone
- Psl - Permian Wollombi Coal Measures
- Pswc - Permian Saltwater Creek Formation
- Pswj - Permian Jerrys Plains Subgroup

**- LEGEND -**

- Predicted Drawdown Contour (m)
- Project Boundary
- Model Grid Boundary
- Proposed Highwall Mining
- Proposed Open Cut Pit
- Dam / Reservoir
- Major River
- Creek
- Major Road

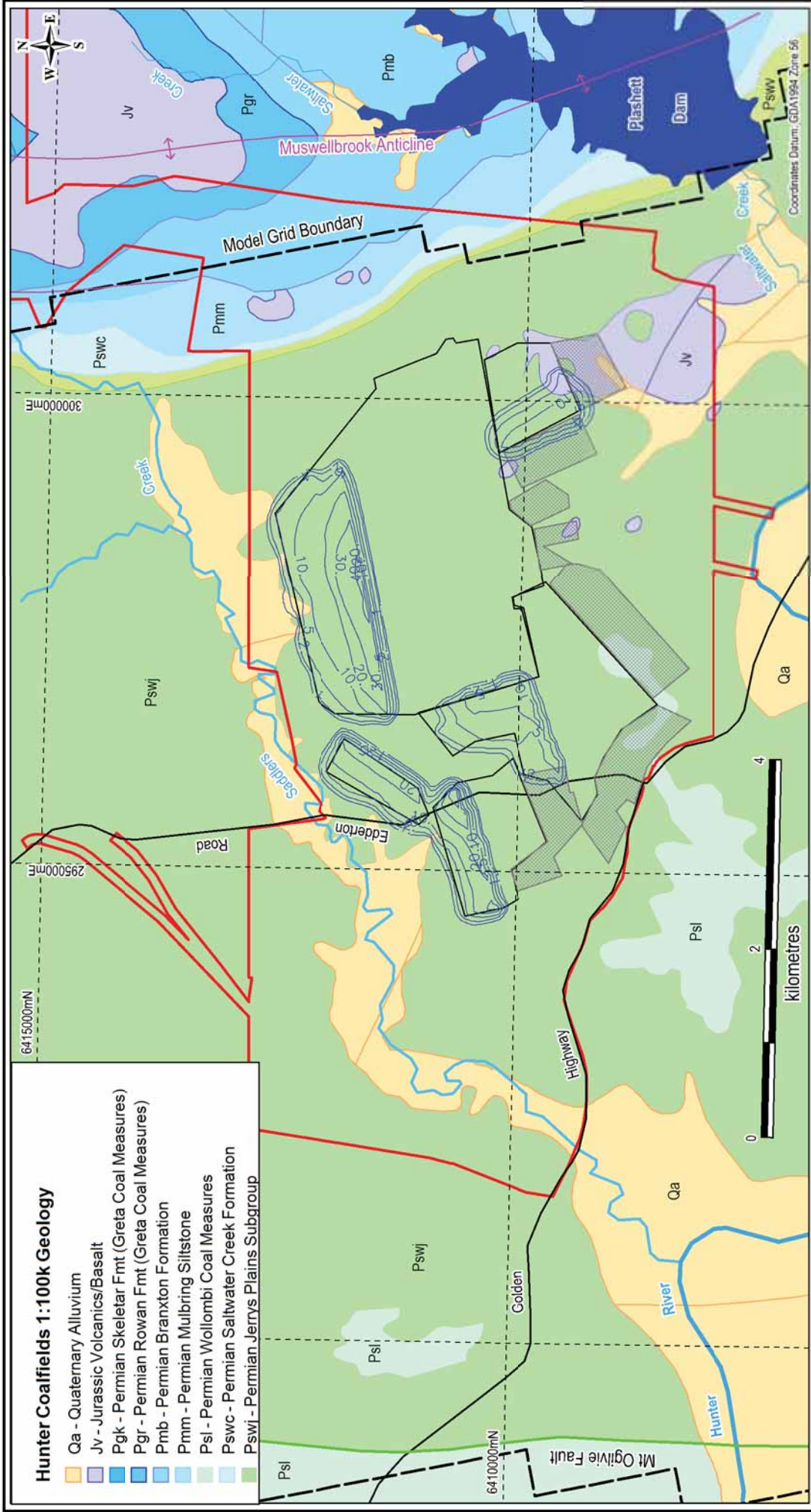


**AUSTRALASIAN GROUNDWATER & ENVIRONMENTAL CONSULTANTS PTY LTD**  
 LEVEL 2, 15 MILLION ST, BOWEN HILLS, 4006, AUSTRALIA

**TITLE:** DRAYTON SOUTH MINE PROJECT EA  
 GROUNDWATER ASSESSMENT  
 PREDICTED GROUNDWATER DRAWDOWN - LAYER 1 - YEAR 3

**CLIENT:** Anglo American  
**DRAWN BY:** CJ  
**SCALE:** 1 : 60,000 (A4)  
**PROJECT No:** G1544  
**APPROVED BY:**  
**DATE:** April 2012  
**OFFICE:** Brisbane  
**DRAWING No:** 21





**AUSTRALASIAN GROUNDWATER & ENVIRONMENTAL CONSULTANTS PTY LTD**  
 LEVEL 2, 15 MILLION ST, BOWEN HILLS, 4006, AUSTRALIA

**AGEE**

**TITLE:** DRAYTON SOUTH MINE PROJECT EA  
 GROUNDWATER ASSESSMENT  
 PREDICTED GROUNDWATER DRAWDOWN - LAYER 1 - YEAR 5

**CLIENT:** Anglo American  
**DRAWN BY:** CJ  
**SCALE:** 1 : 60,000 (A4)  
**PROJECT No:** G1544  
**APPROVED BY:**  
**DATE:** April 2012

**OFFICE:** Brisbane  
**DRAWING No:** 22

**Coordinates Datum: GDA1984 Zone 56**

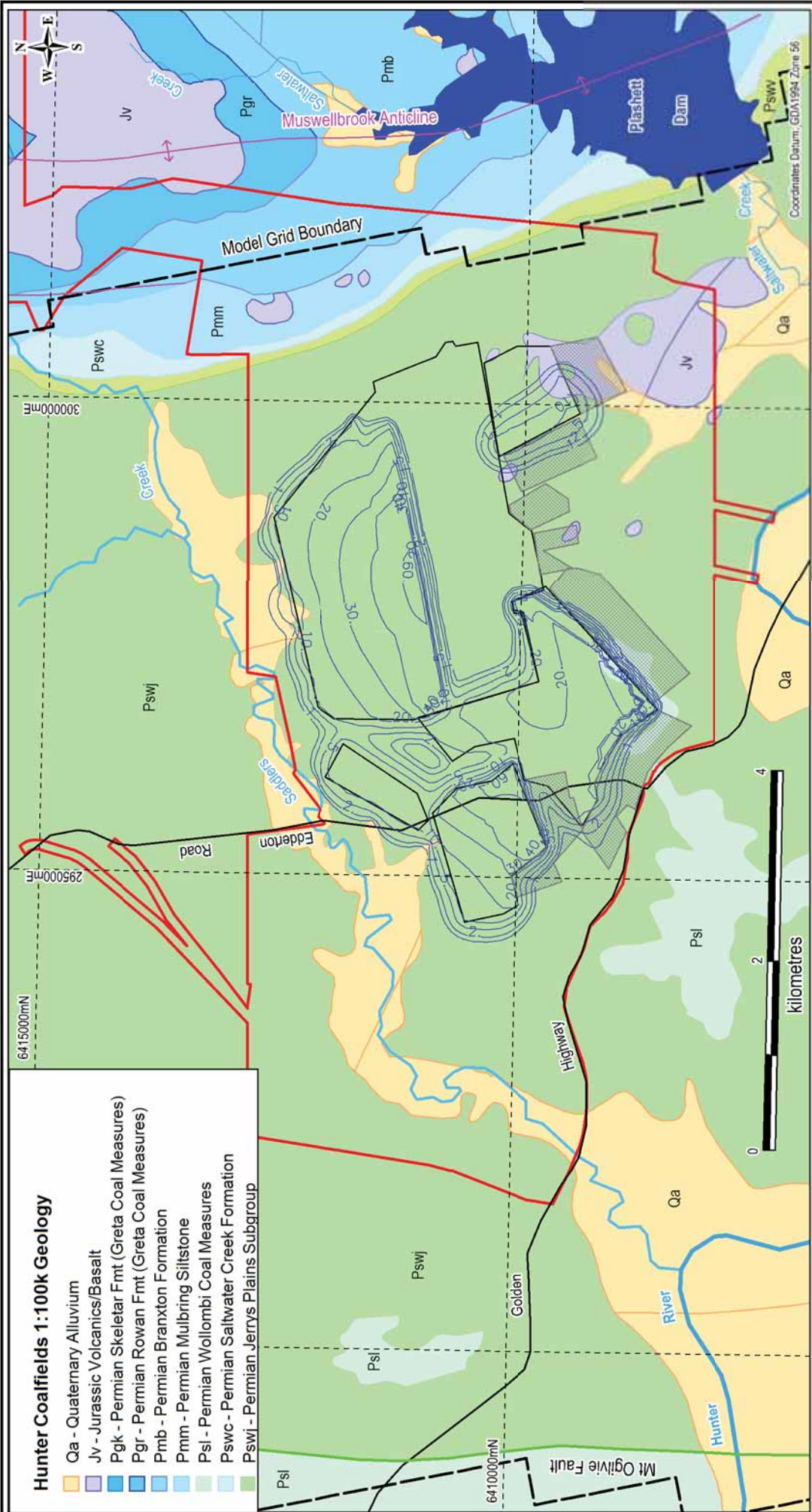
300000mE  
 2950000mE  
 6415000mN  
 6410000mN

0 2 4  
 kilometres



**Hunter Coalfields 1:100k Geology**

- Qa - Quaternary Alluvium
- Jv - Jurassic Volcanics/Basalt
- Pgk - Permian Skeletal Fmt (Greta Coal Measures)
- Pgr - Permian Rowan Fmt (Greta Coal Measures)
- Pmb - Permian Branxton Formation
- Pmm - Permian Mulbring Siltstone
- Psl - Permian Wollombi Coal Measures
- Pswc - Permian Saltwater Creek Formation
- Pswj - Permian Jerrys Plains Subgroup



**- LEGEND -**

- Predicted Drawdown Contour (m)
- Project Boundary
- Dam / Reservoir
- Major River
- Model Grid Boundary
- Major Road
- Creek
- Proposed Highway Mining
- Proposed Open Cut Pit



**AUSTRALASIAN GROUNDWATER & ENVIRONMENTAL CONSULTANTS PTY LTD**  
 LEVEL 2, 15 MILLION ST, BOWEN HILLS, 4006, AUSTRALIA

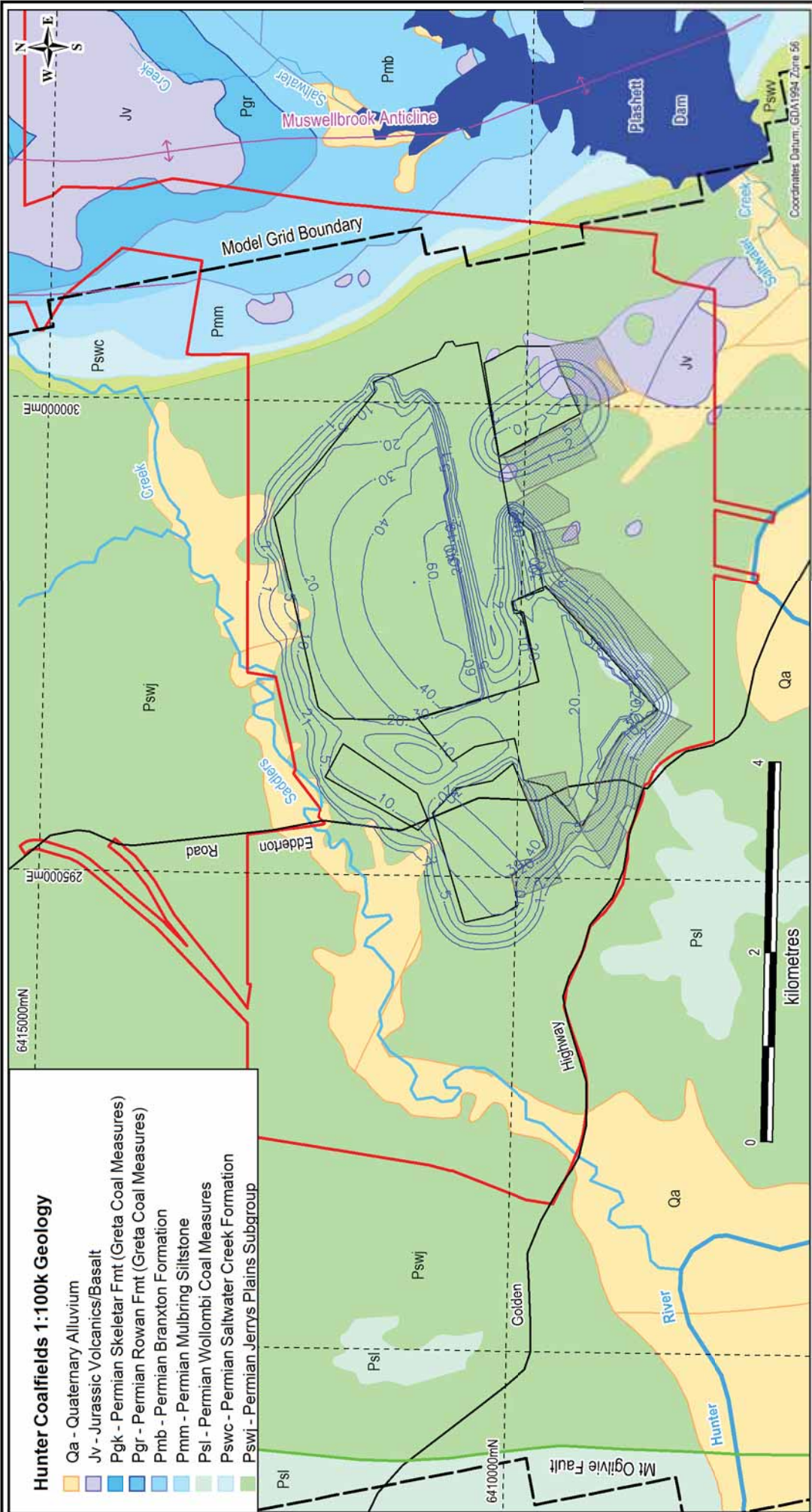
**TITLE: DRAYTON SOUTH MINE PROJECT EA  
 GROUNDWATER ASSESSMENT  
 PREDICTED GROUNDWATER DRAWDOWN - LAYER 1 - YEAR 10**

<b>CLIENT:</b> Anglo American	<b>SCALE:</b> 1 : 60,000 (A4)	<b>PROJECT No:</b> G1544	<b>OFFICE:</b> Brisbane
<b>DRAWN BY:</b> CJ	<b>DATE:</b> April 2012	<b>APPROVED BY:</b>	<b>DRAWING No:</b> 23



**Hunter Coalfields 1:100k Geology**

- Qa - Quaternary Alluvium
- Jv - Jurassic Volcanics/Basalt
- Pgk - Permian Skeletal Fmt (Greta Coal Measures)
- Pgr - Permian Rowan Fmt (Greta Coal Measures)
- Pmb - Permian Branxton Formation
- Pmm - Permian Mulbring Siltstone
- Psl - Permian Wollombi Coal Measures
- Pswc - Permian Saltwater Creek Formation
- Pswj - Permian Jerrys Plains Subgroup



- LEGEND -**
- Predicted Drawdown Contour (m)
  - Model Grid Boundary
  - Proposed Highway Mining
  - Proposed Open Cut Pit
  - Project Boundary
  - Major Road
  - Dam / Reservoir
  - Major River
  - Creek



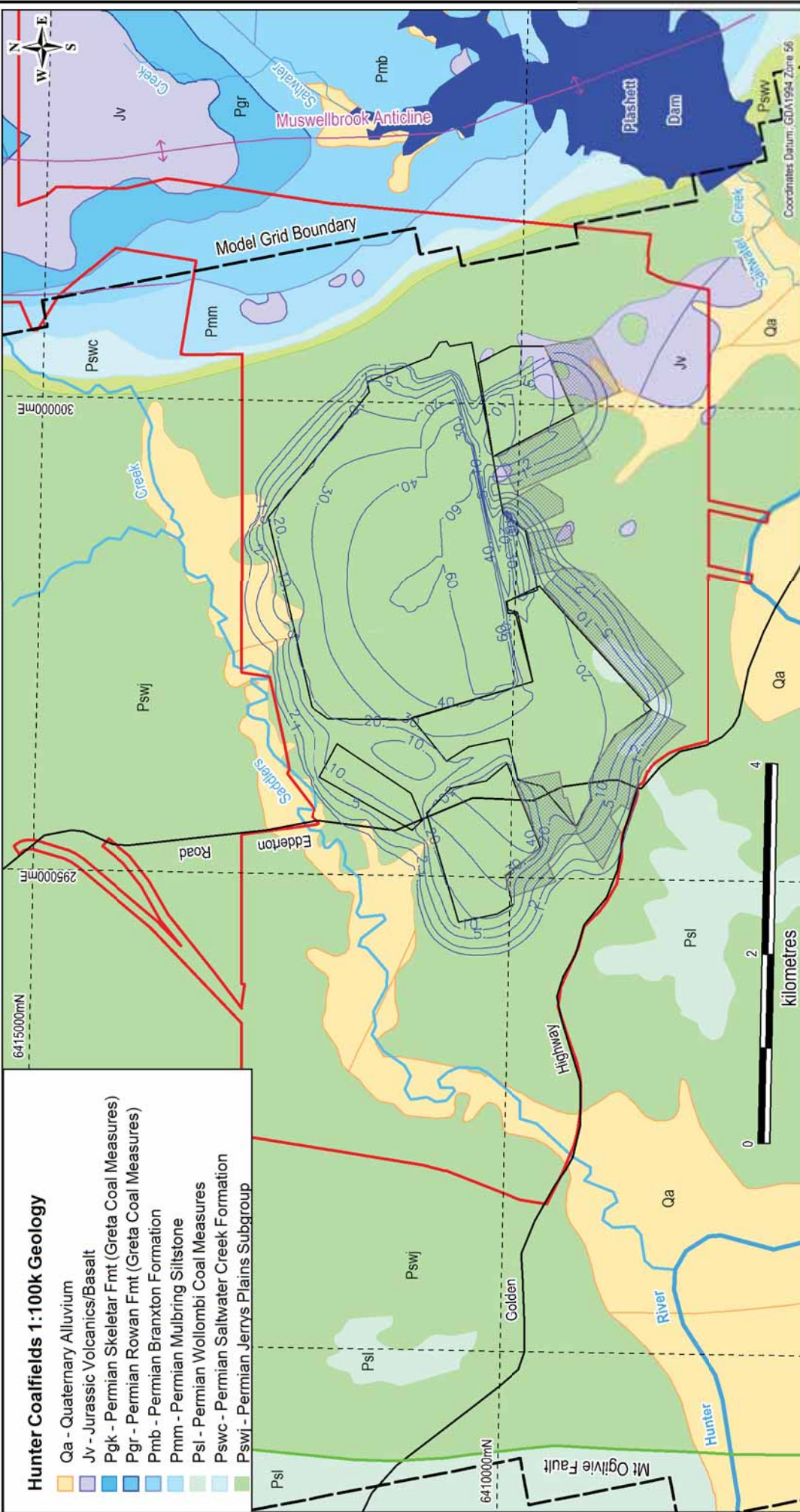
**AUSTRALASIAN GROUNDWATER & ENVIRONMENTAL CONSULTANTS PTY LTD**  
 LEVEL 2, 15 MILLION ST, BOWEN HILLS, 4006, AUSTRALIA

<b>TITLE:</b> DRAYTON SOUTH MINE PROJECT EA GROUNDWATER ASSESSMENT PREDICTED GROUNDWATER DRAWDOWN - LAYER 1 - YEAR 15	
<b>CLIENT:</b> Anglo American	<b>OFFICE:</b> Brisbane
<b>DRAWN BY:</b> CJ	<b>PROJECT No:</b> G1544
<b>APPROVED BY:</b>	<b>DATE:</b> April 2012
<b>SCALE:</b> 1 : 60,000 (A4)	<b>DRAWING No:</b> 24



### Hunter Coalfields 1:100k Geology

- Qa - Quaternary Alluvium
- Jv - Jurassic Volcanics/Basalt
- Pgk - Permian Skeletal Fmt (Greta Coal Measures)
- Pgr - Permian Rowan Fmt (Greta Coal Measures)
- Pmb - Permian Branxton Formation
- Pmm - Permian Mulbring Siltstone
- Psl - Permian Wollombi Coal Measures
- Pswc - Permian Saltwater Creek Formation
- Pswj - Permian Jerrys Plains Subgroup



- LEGEND -**
- Predicted Drawdown Contour (m)
  - Project Boundary
  - Model Grid Boundary
  - Proposed Highwall Mining
  - Proposed Open Cut Pit
  - Dam / Reservoir
  - Major River
  - Major Road
  - Creek



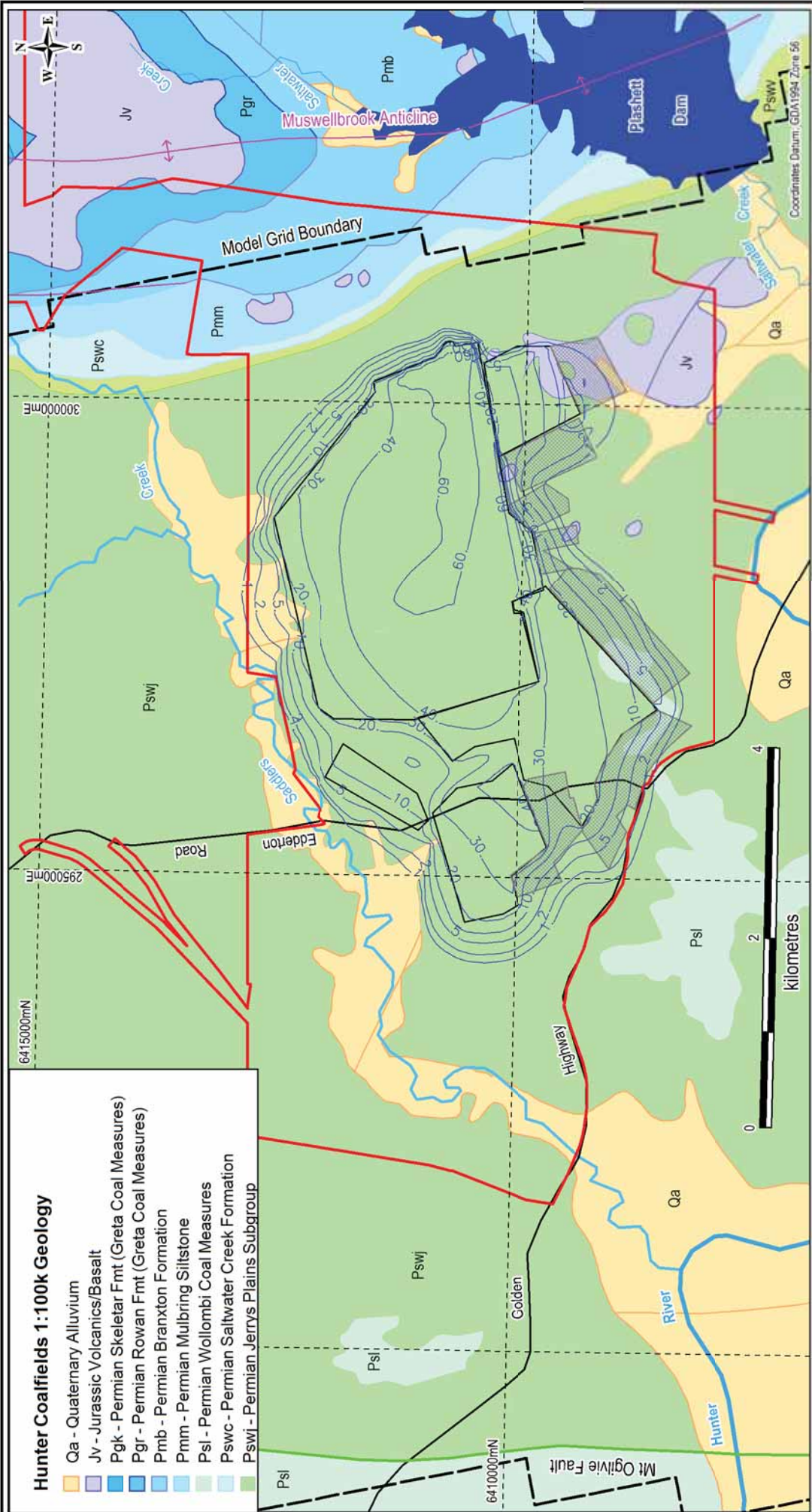
**AUSTRALASIAN GROUNDWATER & ENVIRONMENTAL CONSULTANTS PTY LTD**  
 LEVEL 2, 15 MILLION ST, BOWEN HILLS, 4006, AUSTRALIA

<b>TITLE:</b> DRAYTON SOUTH MINE PROJECT EA GROUNDWATER ASSESSMENT PREDICTED GROUNDWATER DRAWDOWN - LAYER 1 - YEAR 20	
<b>CLIENT:</b> Anglo American	<b>OFFICE:</b> Brisbane
<b>DRAWN BY:</b> CJ	<b>PROJECT No:</b> G1544
<b>APPROVED BY:</b>	<b>DATE:</b> April 2012
<b>SCALE:</b> 1 : 60,000 (A4)	<b>DRAWING No:</b> 25



### Hunter Coalfields 1:100k Geology

- Qa - Quaternary Alluvium
- Jv - Jurassic Volcanics/Basalt
- Pgk - Permian Skeletal Fmt (Greta Coal Measures)
- Pgr - Permian Rowan Fmt (Greta Coal Measures)
- Pmb - Permian Branxton Formation
- Pmm - Permian Mulbring Siltstone
- Psl - Permian Wollombi Coal Measures
- Pswc - Permian Saltwater Creek Formation
- Pswj - Permian Jerrys Plains Subgroup



### - LEGEND -

- Predicted Drawdown Contour (m)
- Model Grid Boundary
- Proposed Highwall Mining
- Proposed Open Cut Pit
- Project Boundary
- Major Road
- Dam / Reservoir
- Major River
- Creek

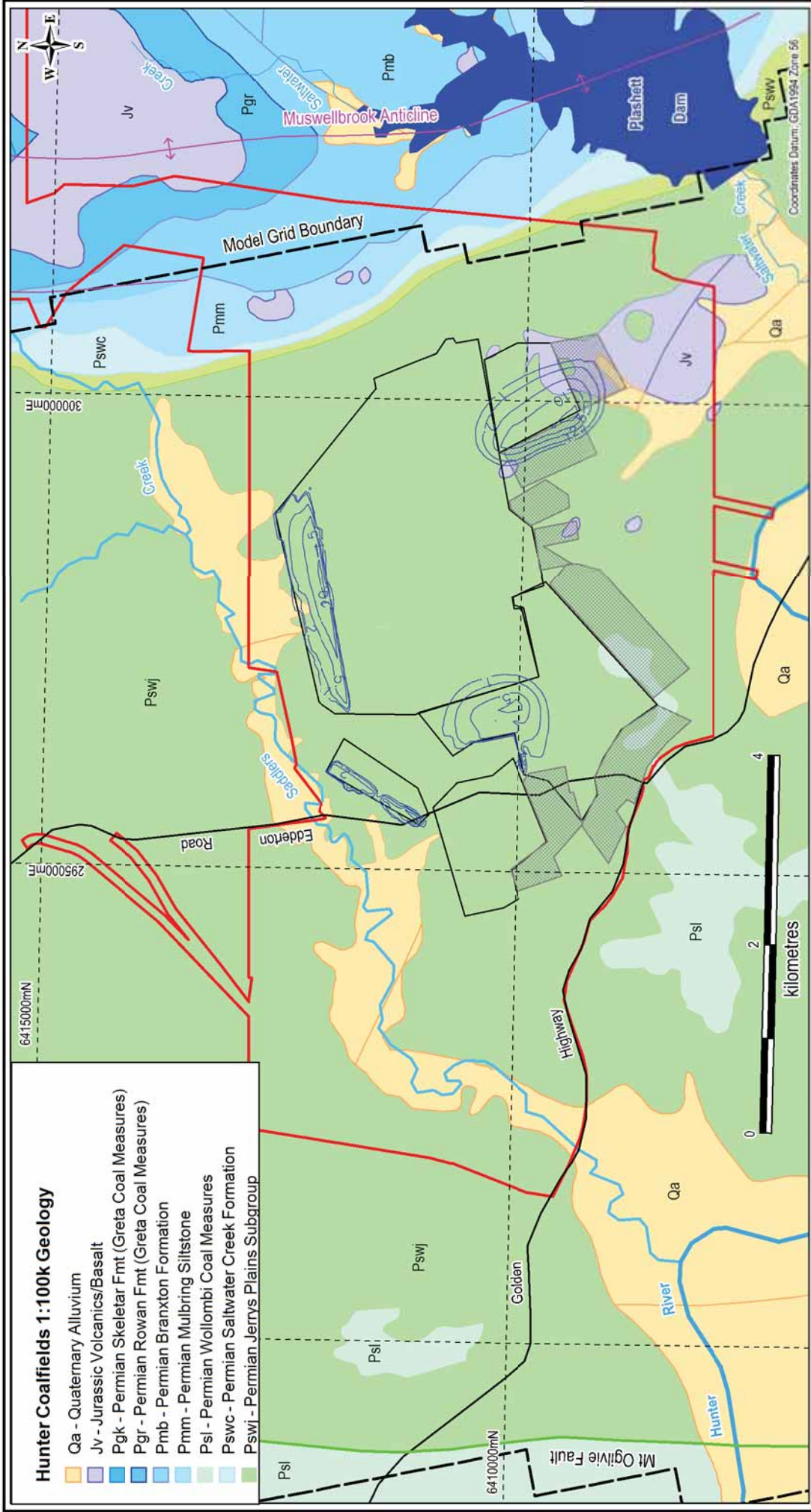


**AUSTRALASIAN GROUNDWATER & ENVIRONMENTAL CONSULTANTS PTY LTD**  
 LEVEL 2, 15 MILLION ST, BOWEN HILLS, 4006, AUSTRALIA

**TITLE: DRAYTON SOUTH MINE PROJECT EA  
 GROUNDWATER ASSESSMENT  
 PREDICTED GROUNDWATER DRAWDOWN - LAYER 1 - YEAR 27**

**CLIENT: Anglo American**  
**DRAWN BY: CJ**    **SCALE: 1 : 60,000 (A4)**    **PROJECT No: G1544**  
**APPROVED BY:**    **DATE: April 2012**    **OFFICE: Brisbane**    **DRAWING No: 26**





**Hunter Coalfields 1:100k Geology**

- Qa - Quaternary Alluvium
- Jv - Jurassic Volcanics/Basalt
- Psk - Permian Skeletal Fmt (Greta Coal Measures)
- Pgr - Permian Rowan Fmt (Greta Coal Measures)
- Pmb - Permian Branxton Formation
- Pmm - Permian Mulbring Siltstone
- Psl - Permian Wollombi Coal Measures
- Pswc - Permian Saltwater Creek Formation
- Pswj - Permian Jerrys Plains Subgroup

**- LEGEND -**

- Predicted Drawdown Contour (m)
- Model Grid Boundary
- Proposed Highway Mining
- Proposed Open Cut Pit
- Project Boundary
- Major Road
- Dam / Reservoir
- Major River
- Creek



**AUSTRALASIAN GROUNDWATER & ENVIRONMENTAL CONSULTANTS PTY LTD**  
 LEVEL 2, 15 MILLION ST, BOWEN HILLS, 4006, AUSTRALIA

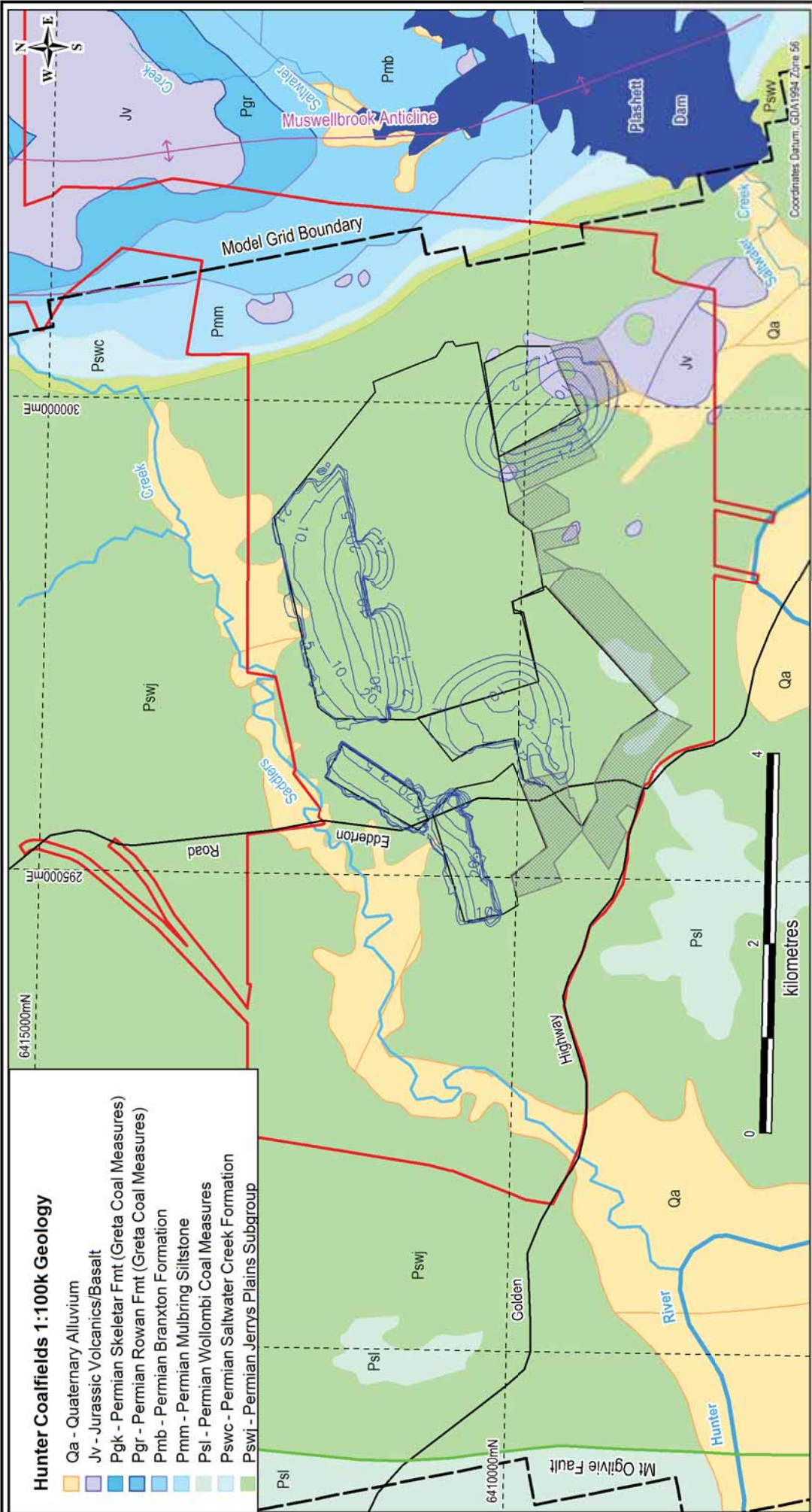
**TITLE:** DRAYTON SOUTH MINE PROJECT EA  
 GROUNDWATER ASSESSMENT  
 PREDICTED GROUNDWATER DRAWDOWN - LAYER 5 - YEAR 3

**CLIENT:** Anglo American  
**DRAWN BY:** CJ  
**SCALE:** 1 : 60,000 (A4)  
**PROJECT No:** G1544  
**APPROVED BY:**  
**DATE:** April 2012  
**OFFICE:** Brisbane  
**DRAWING No:** 27



**Hunter Coalfields 1:100k Geology**

- Qa - Quaternary Alluvium
- Jv - Jurassic Volcanics/Basalt
- Pgk - Permian Skeletal Fmt (Greta Coal Measures)
- Pgr - Permian Rowan Fmt (Greta Coal Measures)
- Pmb - Permian Branxton Formation
- Pmm - Permian Mulbring Siltstone
- Psl - Permian Wollombi Coal Measures
- Pswc - Permian Saltwater Creek Formation
- Pswj - Permian Jerrys Plains Subgroup



- LEGEND -**
- Predicted Drawdown Contour (m)
  - Model Grid Boundary
  - Proposed Highwall Mining
  - Proposed Open Cut Pit
  - Project Boundary
  - Major Road
  - Dam / Reservoir
  - Major River
  - Creek



**AUSTRALASIAN GROUNDWATER & ENVIRONMENTAL CONSULTANTS PTY LTD**  
 LEVEL 2, 15 MILLION ST, BOWEN HILLS, 4006, AUSTRALIA

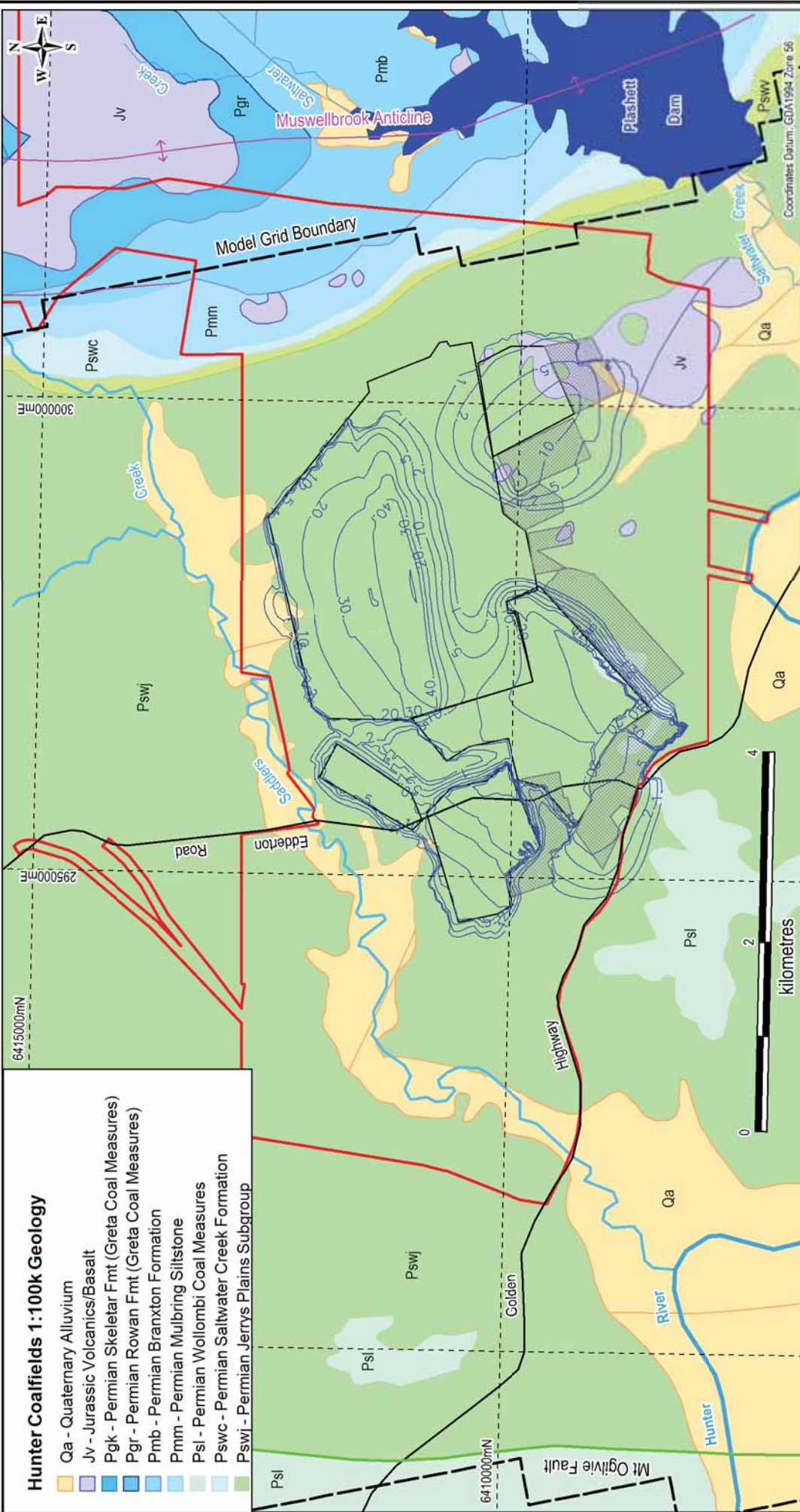
**TITLE:** DRAYTON SOUTH MINE PROJECT EA  
 GROUNDWATER ASSESSMENT  
 PREDICTED GROUNDWATER DRAWDOWN - LAYER 5 - YEAR 5

**CLIENT:** Anglo American  
**DRAWN BY:** CJ  
**SCALE:** 1 : 60,000 (A4)  
**PROJECT No:** G1544  
**APPROVED BY:**  
**DATE:** April 2012  
**OFFICE:** Brisbane  
**DRAWING No:** 28



**Hunter Coalfields 1:100k Geology**

- Qa - Quaternary Alluvium
- Jv - Jurassic Volcanics/Basalt
- Pgk - Permian Skeletal Fmt (Greta Coal Measures)
- Pgr - Permian Rowan Fmt (Greta Coal Measures)
- Pmb - Permian Branxton Formation
- Pmm - Permian Mulbring Siltstone
- Psl - Permian Wollombi Coal Measures
- Pswc - Permian Saltwater Creek Formation
- Pswj - Permian Jerrys Plains Subgroup



**- LEGEND -**

- Predicted Drawdown Contour (m)
- Project Boundary
- Dam / Reservoir
- Major River
- Major Road
- Creek
- Model Grid Boundary
- Proposed Highway Mining
- Proposed Open Cut Pit



**AUSTRALASIAN GROUNDWATER & ENVIRONMENTAL CONSULTANTS PTY LTD**  
 LEVEL 2, 15 MILLION ST, BOWEN HILLS, 4006, AUSTRALIA

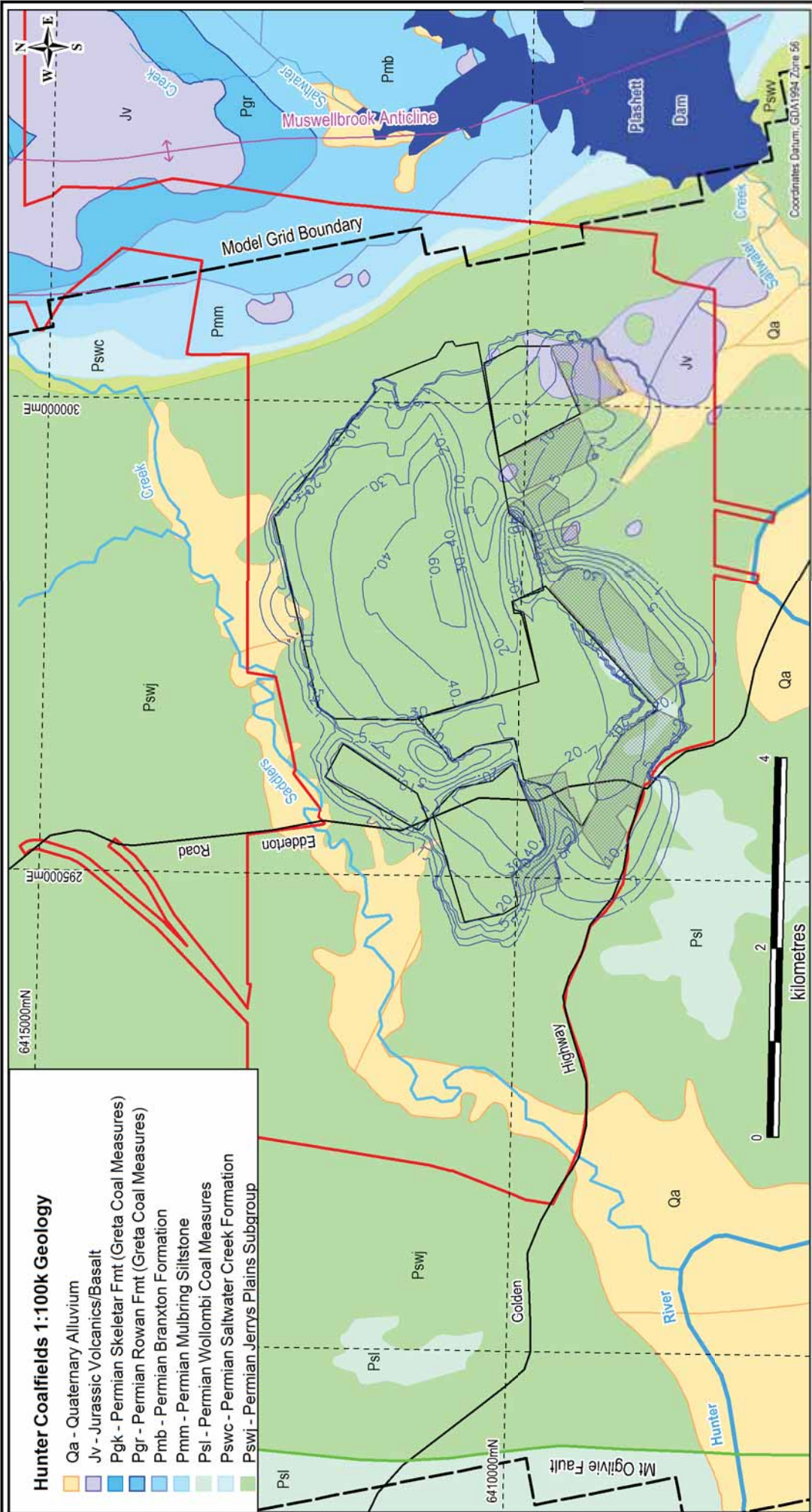
**TITLE: DRAYTON SOUTH MINE PROJECT EA  
 GROUNDWATER ASSESSMENT  
 PREDICTED GROUNDWATER DRAWDOWN - LAYER 5 - YEAR 10**

**CLIENT: Anglo American**  
**DRAWN BY: CJ**    **SCALE: 1 : 60,000 (A4)**    **PROJECT No: G1544**    **OFFICE: Brisbane**  
**APPROVED BY:**    **DATE: April 2012**    **DRAWING No: 29**



### Hunter Coalfields 1:100k Geology

- Qa - Quaternary Alluvium
- Jv - Jurassic Volcanics/Basalt
- Pgk - Permian Skeletal Fmt (Greta Coal Measures)
- Pgr - Permian Rowan Fmt (Greta Coal Measures)
- Pmb - Permian Branxton Formation
- Pmm - Permian Mulbring Siltstone
- Psi - Permian Wollombi Coal Measures
- Pswc - Permian Saltwater Creek Formation
- Pswj - Permian Jerrys Plains Subgroup



- LEGEND -**
- Predicted Drawdown Contour (m)
  - Project Boundary
  - Model Grid Boundary
  - Proposed Highway Mining
  - Proposed Open Cut Pit
  - Dam / Reservoir
  - Major River
  - Creek
  - Major Road



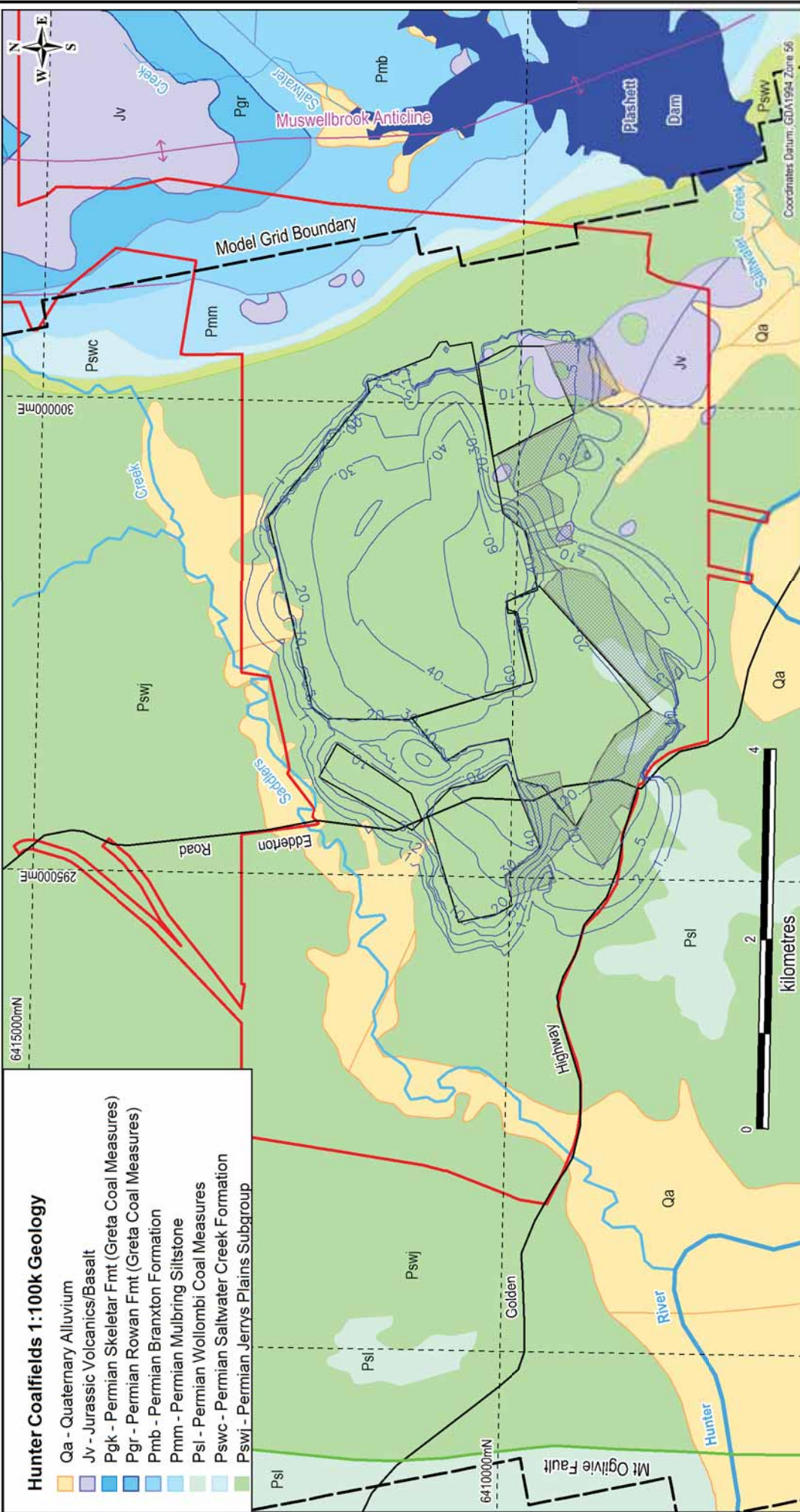
**AUSTRALASIAN GROUNDWATER & ENVIRONMENTAL CONSULTANTS PTY LTD**  
 LEVEL 2, 15 MILLION ST, BOWEN HILLS, 4006, AUSTRALIA

<b>TITLE:</b> DRAYTON SOUTH MINE PROJECT EA GROUNDWATER ASSESSMENT PREDICTED GROUNDWATER DRAWDOWN - LAYER 5 - YEAR 15	
<b>CLIENT:</b> Anglo American	<b>OFFICE:</b> Brisbane
<b>DRAWN BY:</b> CJ	<b>PROJECT No:</b> G1544
<b>APPROVED BY:</b>	<b>DATE:</b> April 2012
<b>SCALE:</b> 1 : 60,000 (A4)	<b>DRAWING No:</b> 30



**Hunter Coalfields 1:100k Geology**

- Qa - Quaternary Alluvium
- Jv - Jurassic Volcanics/Basalt
- Pgk - Permian Skeletal Fmt (Greta Coal Measures)
- Pgr - Permian Rowan Fmt (Greta Coal Measures)
- Pmb - Permian Branxton Formation
- Pmm - Permian Mulbring Siltstone
- Psl - Permian Wollombi Coal Measures
- Pswc - Permian Saltwater Creek Formation
- Pswj - Permian Jerrys Plains Subgroup



- LEGEND -**
- Predicted Drawdown Contour (m)
  - Model Grid Boundary
  - Proposed Highway Mining
  - Proposed Open Cut Pit
  - Project Boundary
  - Major Road
  - Dam / Reservoir
  - Major River
  - Creek



**AUSTRALASIAN GROUNDWATER & ENVIRONMENTAL CONSULTANTS PTY LTD**  
 LEVEL 2, 15 MILLION ST, BOWEN HILLS, 4006, AUSTRALIA

**TITLE: DRAYTON SOUTH MINE PROJECT EA  
 GROUNDWATER ASSESSMENT  
 PREDICTED GROUNDWATER DRAWDOWN - LAYER 5 - YEAR 20**

**CLIENT: Anglo American**  
**DRAWN BY: CJ**    **SCALE: 1 : 60,000 (A4)**    **PROJECT No: G1544**    **OFFICE: Brisbane**  
**APPROVED BY:**    **DATE: April 2012**    **DRAWING No: 31**