



## Wollongong Coal Ltd

ACN 111 244 896  
ABN 28 111 244 896

Head Office  
7 Princes Highway  
CORRIMAL NSW 2518

PO Box 281  
FAIRY MEADOW NSW 2519

Phone +61 2 4223 6800

Fax +61 2 4283 7449

[www.wollongongcoal.com.au](http://www.wollongongcoal.com.au)

---

16<sup>th</sup> October 2020

### IPC Russell Vale Site Visit

#### STOP 1 – Truck Drivers rest area

- Noise berm 1, (south)
- Noise wall to be constructed in from trees along Broker Street from Princes Hwy
- Continuous Noise monitoring Station
- Dust deposition monitoring station
- Primary settling ponds water pond 1 & 2.
- Weather monitoring station
- Truck wash
- Wheel wash
- Weight bridge

#### STOP 2 – Portal area

- Wongawilli Seam Portal
- Compressor Shed
- Ventilation fans
- Workshop
- Wash Bay
- Laydown areas
- Control Room

#### HOLD POINT 1 – Coal Processing Plant

- Coal processing plant
- Surge bin
- Truck loading bin

#### HOLD PONT 2 – ROM Stockpile

- Stockpile
- RV1 Stockpile Conveyor

#### STOP 3 – Coal Loading Area

- Stockpile
- Berm 1 (North)
- Berm 2 & 3 (South)
- Weather activated dust control sprays
- Proposed dry processing plant (West)
- Truck Loading area
- Truck Parking (early arrival area)
- Truck wash and check point 1

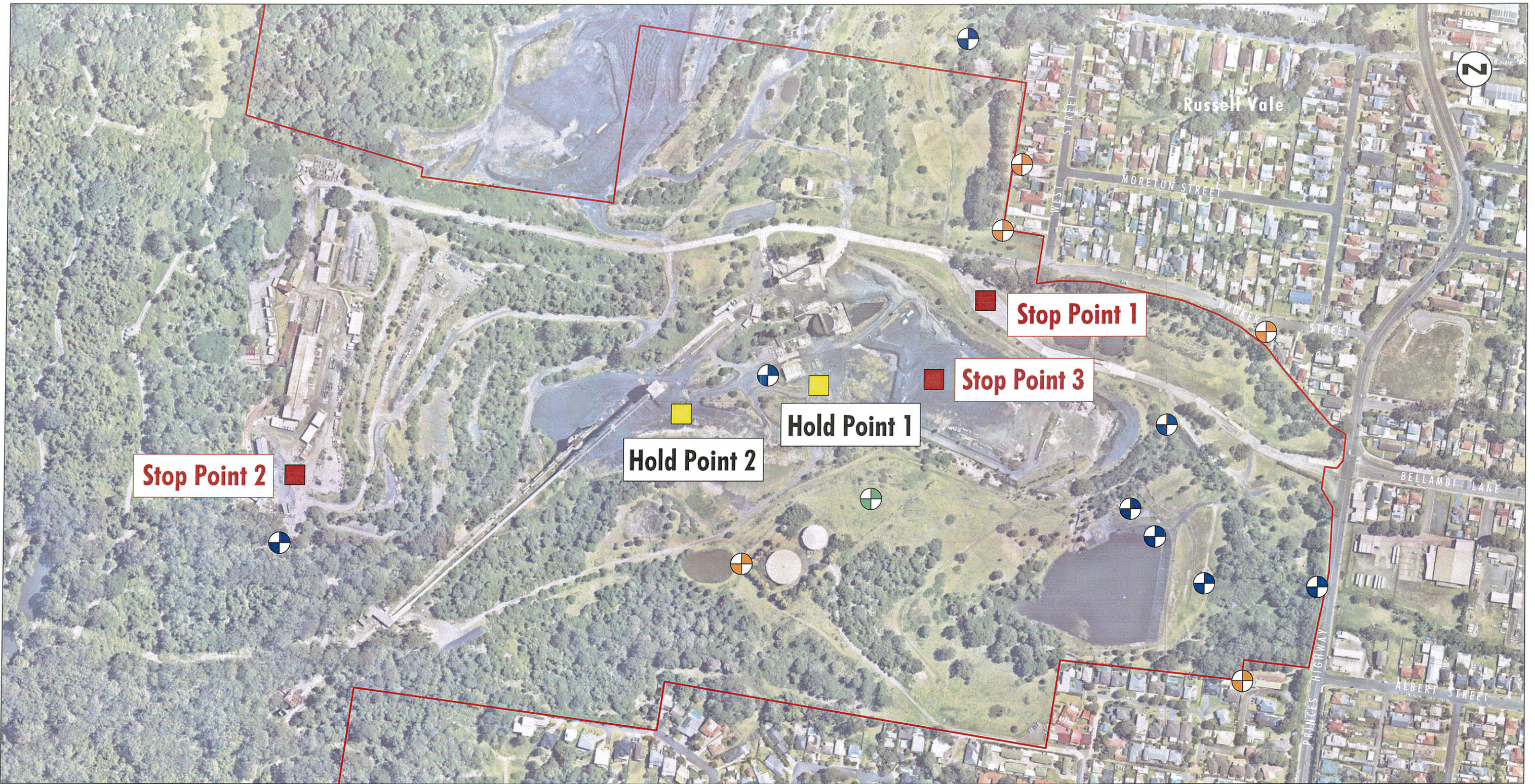


Image Source: Nearmap (Dec 2018)  
 Data Source: Wollongong Coal (2020)

0 100 200 300m

**Legend**

- UEP Project Application Area
- ⊕ Water Monitoring Locations
- ⊕ Dust Monitoring Locations
- ⊕ Meteorological Monitoring Station

FIGURE 1

Surface Facilities  
 Site Inspection Overview

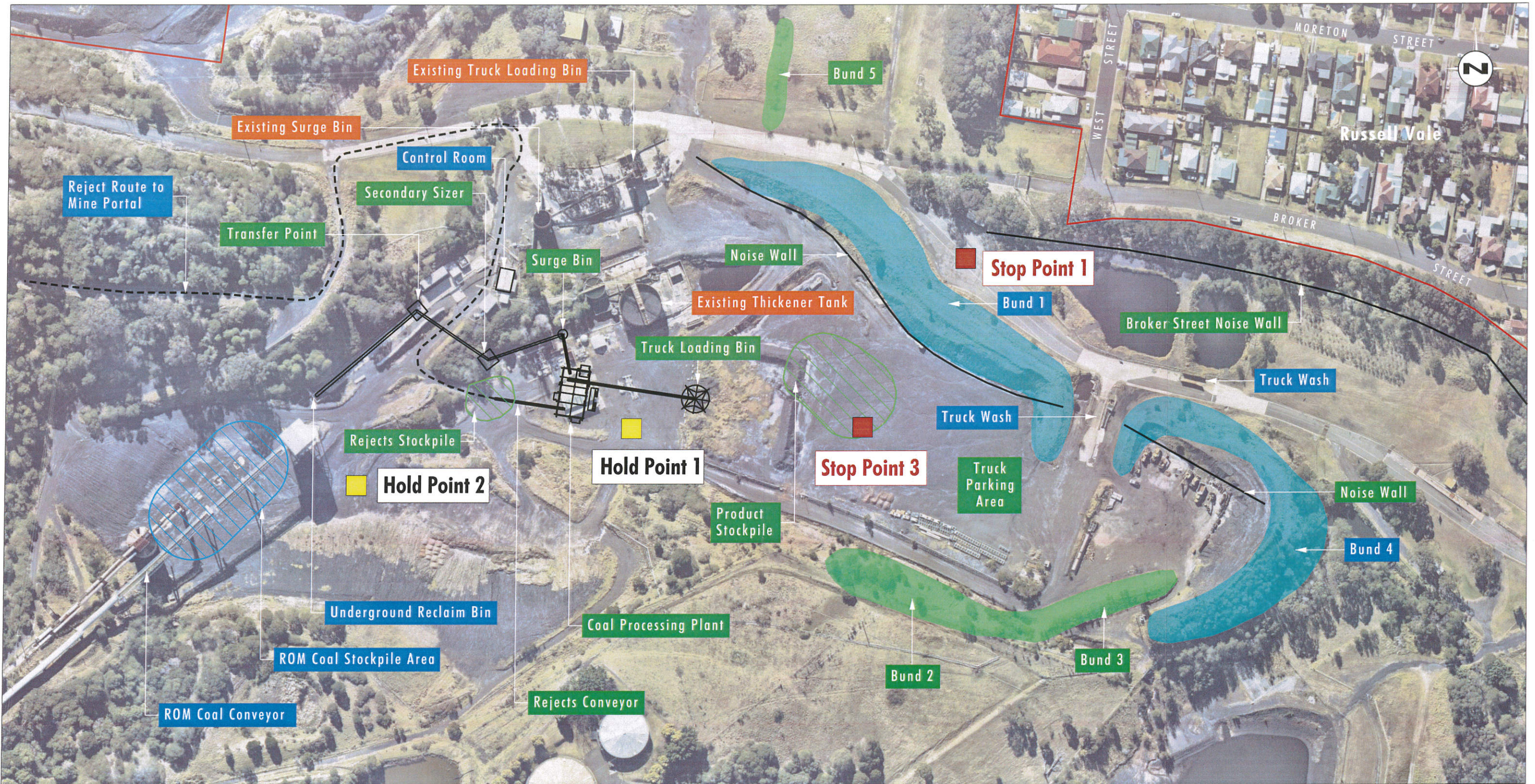


Image Source: Nearmap (Aug 2018)  
 Data Source: Wollongong Coal (2020)

0 50 100 150m

**Legend**

- UEP Project Application Area
- Existing Disused Infrastructure
- Existing Infrastructure to be used by UEP
- Infrastructure to be Constructed
- Existing Bund
- Existing Bund to be raised/extended

FIGURE 2

Surface Facilities  
 Site Inspection Details

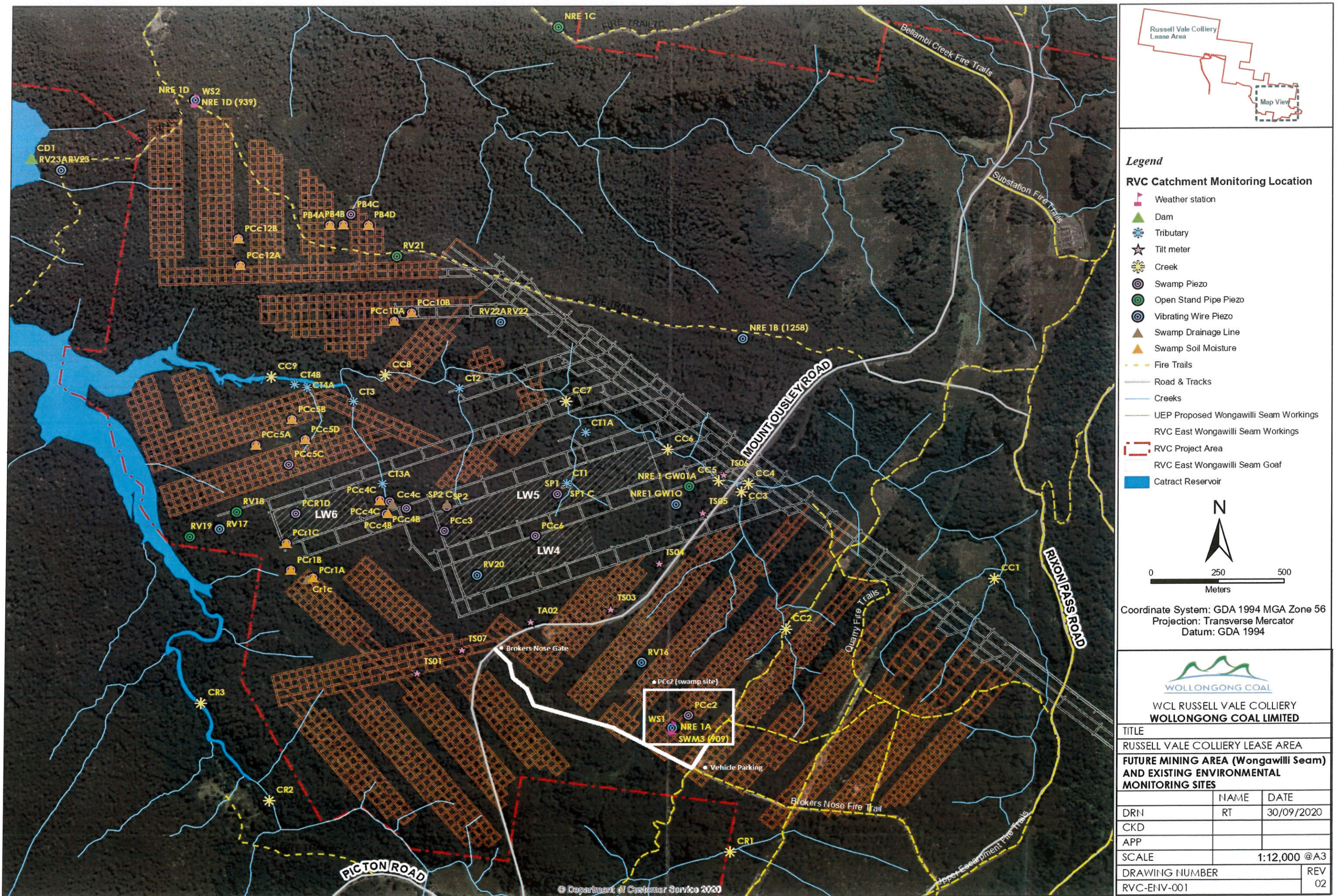
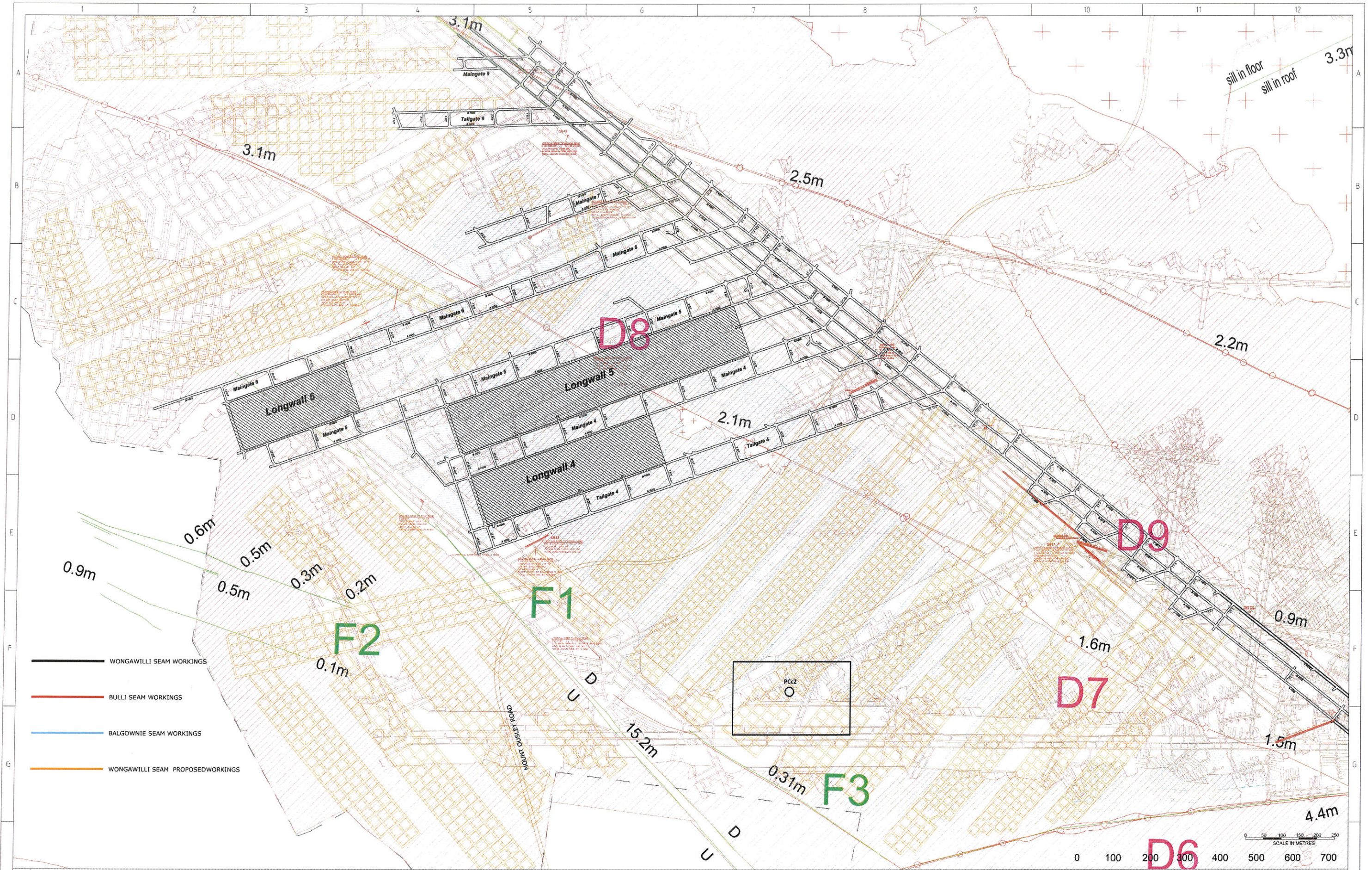


Figure 3 Catchment and proposed workings



REV	DESCRIPTION	DATE	DRN	CKD	REV	DESCRIPTION	DATE	DRN	CKD
1					2				
2					3				
3					4				
4					5				
5					6				



WCL Russell Vale Colliery  
 Wollongong Coal Limited  
 7 Princes Highway, Corrimal  
 N.S.W. 2518  
 ABN 28 111 244 896

Name	Date
DRN	
CKD	
APP	
SCALE	

Title	REV
Bulli, Balgownie and Wongawilli Seam Workings	0
DRAWING NUMBER	
RV-00-0000	