



Flyers Creek Wind Farm Planning Modification 4 – IPC Site Visit Itinerary

Monday 22nd July 2019

1. Proposed Switching Station Location - Meeting Point 11:00am

Please meet at 11am on Cadia Road at the location of the proposed switching station at the northern most point of the Flyers Creek Wind Farm (FCWF) site. Please park in the area on the west of Cadia Road where there is space for 2 to 3 cars to pull in safely under the existing Orange North to Cadia power line.

2. Proposed 132kV power line route

From location 1 we will drive south on the Cadia Road and south east on Panuara Road for ~10 to 15 minutes. We will follow the route of the proposed 132kV power line, both overhead and underground sections.

3. (a) Proposed 132kV and 33kV power line

At the junction of Panuara Road and Errowanbang Road turn left and pull in on your left on an area of ground next to Flyers Creek watercourse.

(b) Viewpoint W14, looking east north east from dwelling 17

At the same location, the wireline from Viewpoint W14 can be observed.

4. Substation Location

From location 3 we will drive north east on the Errowanbang Road for ~3 minutes before turning eastwards (right) through a farm gate onto one of the host landowner's property. We will travel on farm track eastwards to the proposed substation location.

5. Turbine 3 and Location of northern met mast

From Location 4 we will travel back to the Errowanbang Road and travel north east on the Errowanbang Road for ~1 minute before turning eastwards (right) onto the driveway of 'Wallaby' 1842 Errowanbang Road where we will meet one of the host landowners who will escort us off road to Turbine 3 and the location of the northern met mast.

6. Viewpoint W3, looking south south east to north west from Platform Road (Browns Creek Rd)

From Location 5 we will travel north on Errowanbang Road then turn sharp right onto Beneree Carcoar Road and travel south for ~15 minutes to the junction with Gap Road and Browns Creek Road. There is space to pull in on the road verge to observe Viewpoint W3.

7. Gap Road, Errowanbang, Halls Road

From Location 6 we will travel south on Gap Road for ~8 minutes then turn sharp right and travel northwards on the Errowanbang Road through the centre of the site for ~ 5 minutes before turning eastwards (right) onto Halls Road.

8. Junction of Panuara Road and Errowanbang Road

Next we will travel north on the Errowanbang Road for ~10 minutes to the junction of the Panuara Rd where the site visit will finish at ~3pm.

1. Meeting Point, 11am
(Cadia Road) & switching
station location

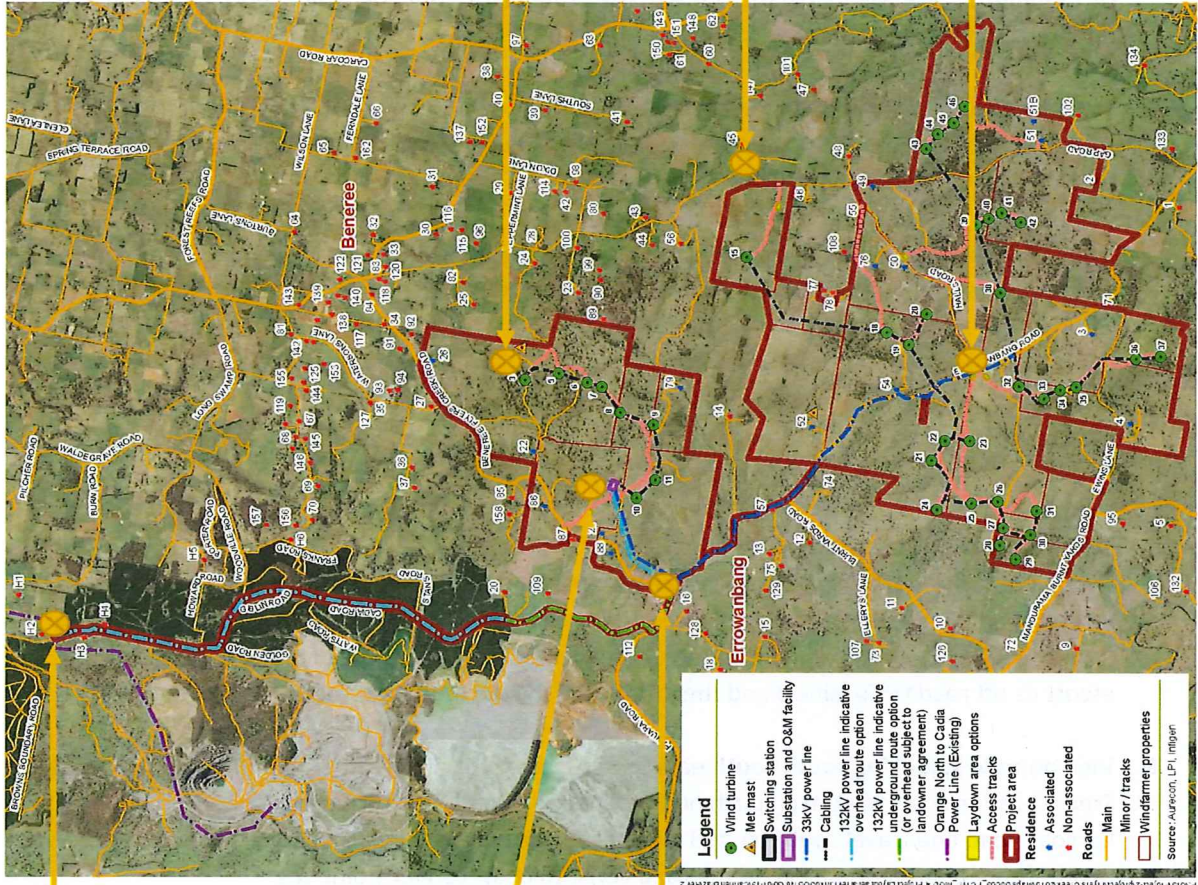
4. Substation Location

3. (a) Proposed 132kV and
33kV power line
(b) Viewpoint W14

5. Turbine 3 and met mast

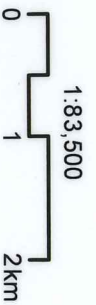
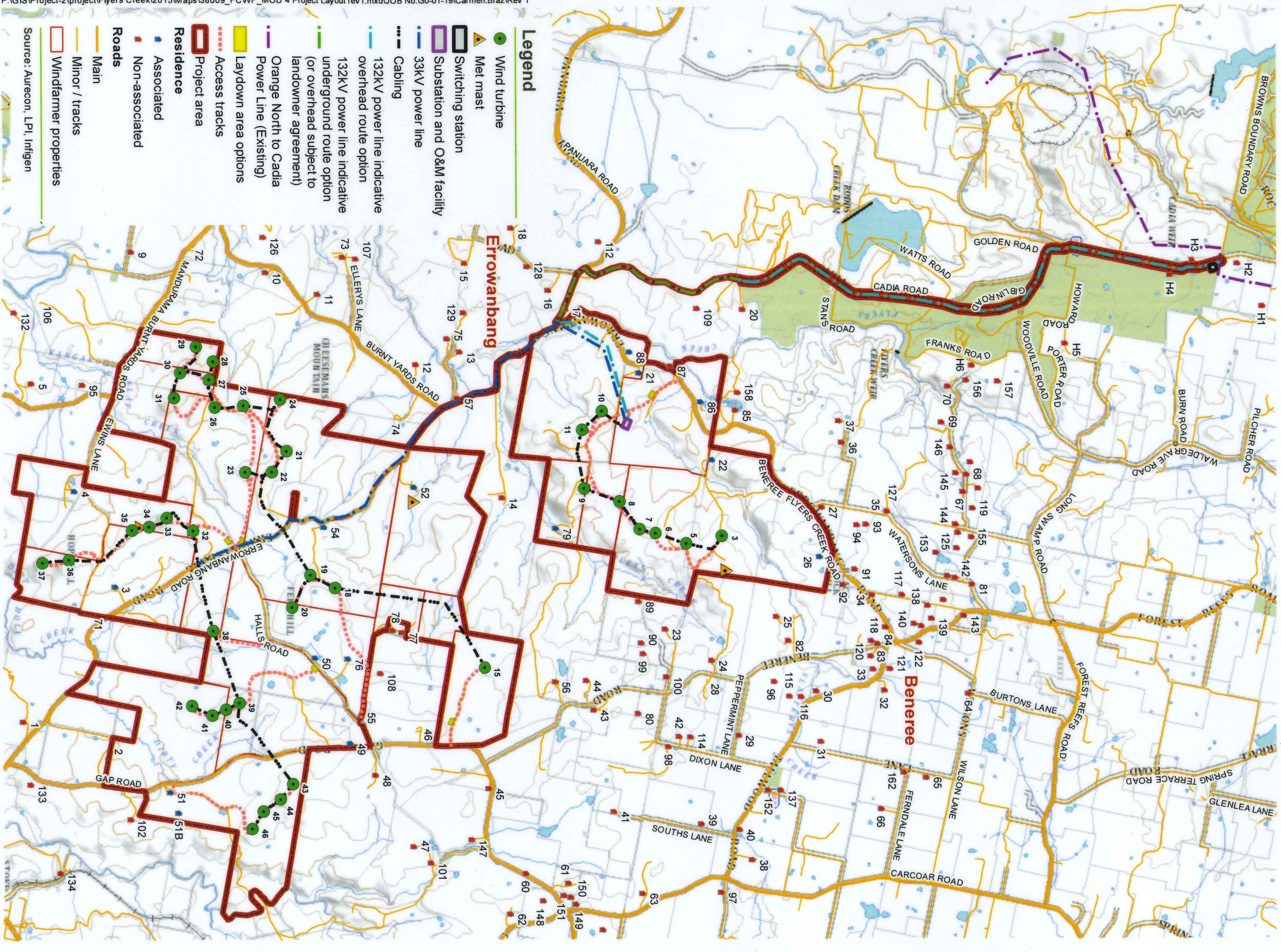
6. Viewpoint W3

7. Halls Road



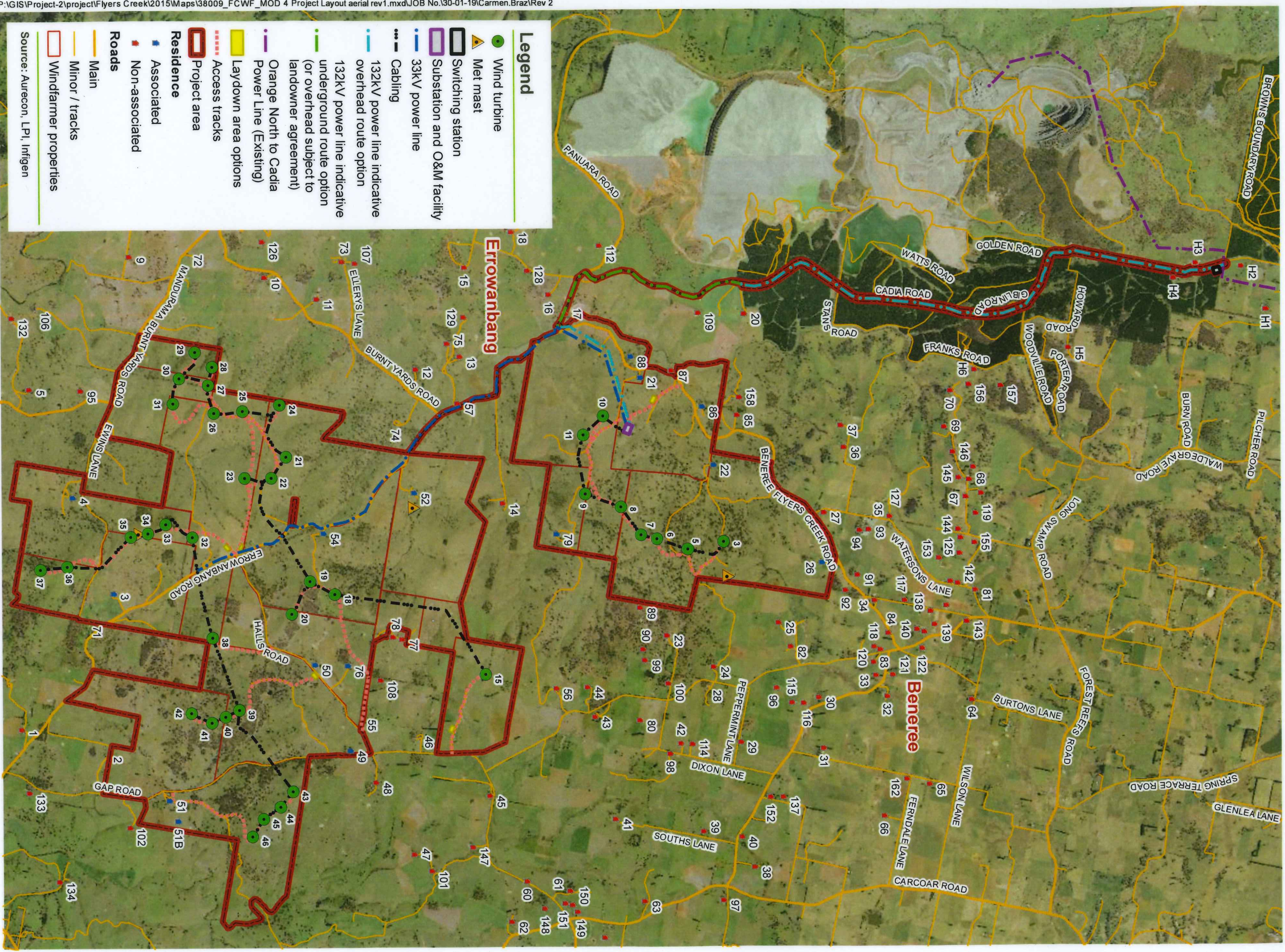
Project file: 004.1914.MGA.Zone05

MOD 4 Figure 2: Project Layout (aerial images)



Projection: GDA 1994 MGA Zone 55

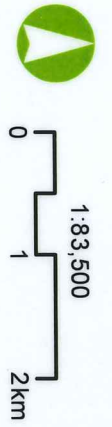
MOD 4 Figure 1: Project Layout
Flyers Creek Wind Farm



Legend

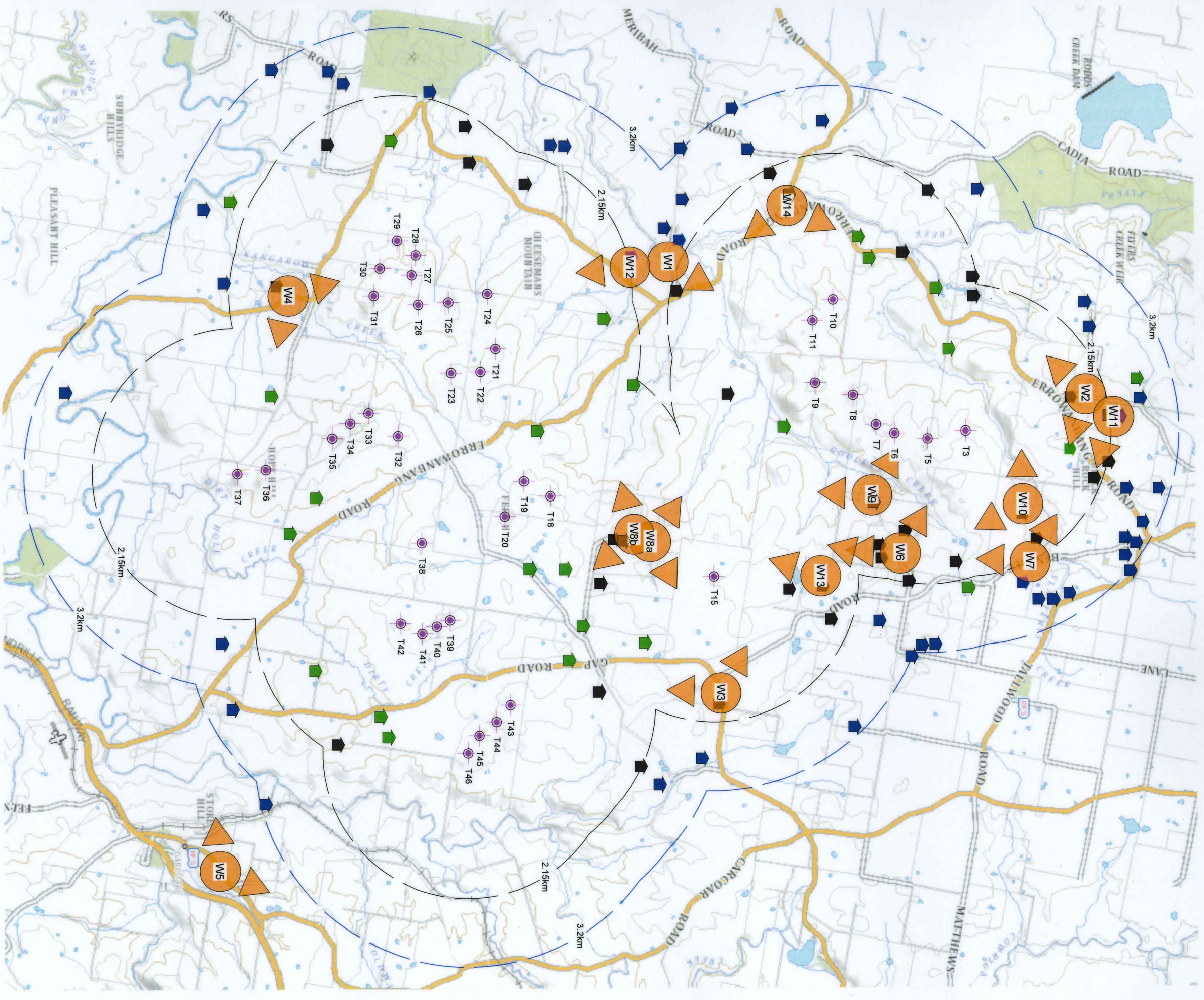
- Wind turbine
- ▲ Met mast
- Switching station
- Substation and O&M facility
- 33kV power line
- 132kV power line indicative overhead route option
- 132kV power line indicative underground route option (or overhead subject to landowner agreement)
- Orange North to Cadia Power Line (Existing)
- Laydown area options
- Access tracks
- Project area
- Residence
- Associated
- Non-associated
- Roads
- Main
- Minor / tracks
- Windfarmer properties

Source: Aurecon, LPI, Infigen



Projection: GDA 1994 MGA Zone 55

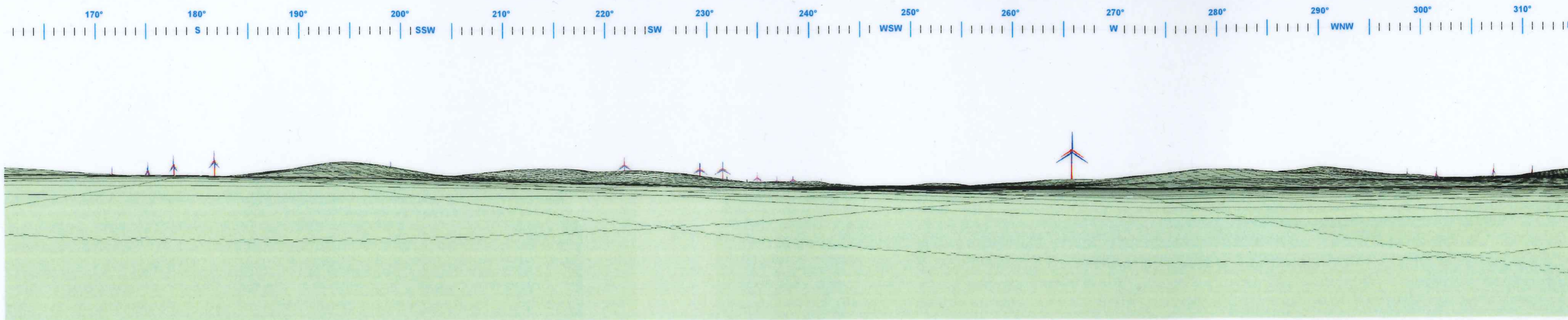
Flyers Creek Wind Farm
MOD 4 Figure 2: Project Layout (aerial images)



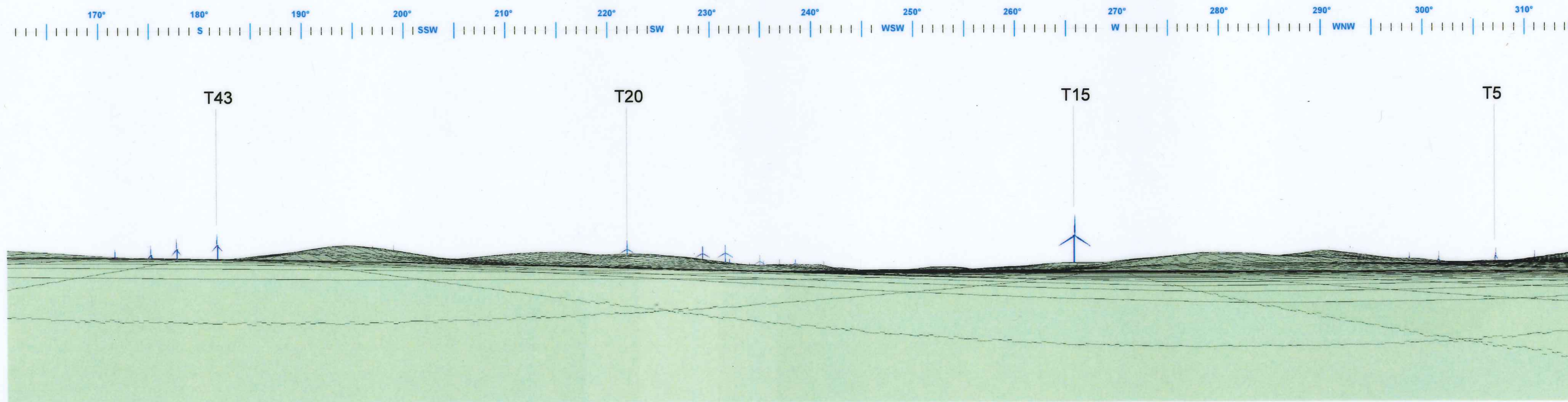
- Legend**
- FCWF approved wind turbine location (indicative location)
 - Associated dwelling within 3.2 km of approved wind turbine
 - Non associated dwelling within 2.15 km of approved wind turbine
 - Non associated dwelling between 2.15 km and 3.2 km of approved wind turbine
 - 2.15 km wind turbine distance offset in accordance with DPE Visual Bulletin Dec 2016, Figure 5 - 160 m tip height
 - 3.2 km wind turbine distance offset in accordance with DPE Visual Bulletin Dec 2016, Figure 5 - 160 m tip height
 - Indicative wire frame location and general view direction

Figure 10
FCWF wire frame locations

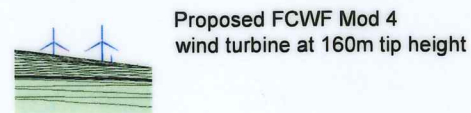
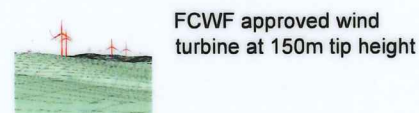
Flyers Creek Wind Farm Modification 4



Flyers Creek Wind Farm, Viewpoint W3 looking south south east to north west from Platform Road: Approved 150m tip of blade wind turbines (red) and Mod 4 160m tip of blade wind turbines (blue)
 Approximate distance to closest approved wind turbine (T15) 1,835 metres



Flyers Creek Wind Farm, Viewpoint W3 looking south south east to north west from Platform Road: Proposed Mod 4 160m tip of blade wind turbines (blue) only



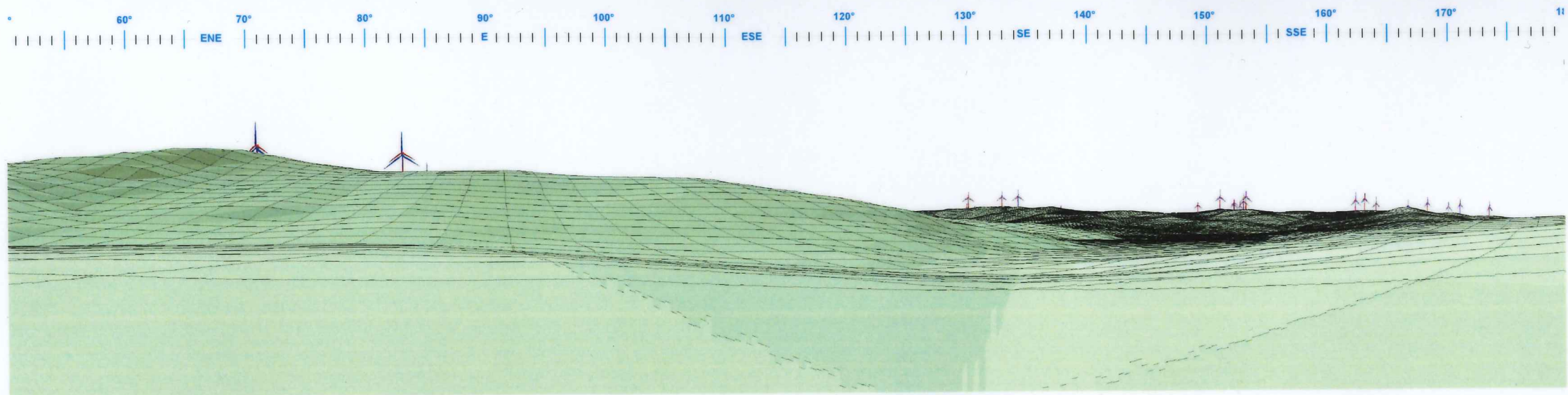
Notes:
 Views toward wind turbines or portions of wind turbines below the green wireframe will be screened by landform.

The wireframe model does not account for existing tree cover and/or planting which may screen views toward the wind turbines.

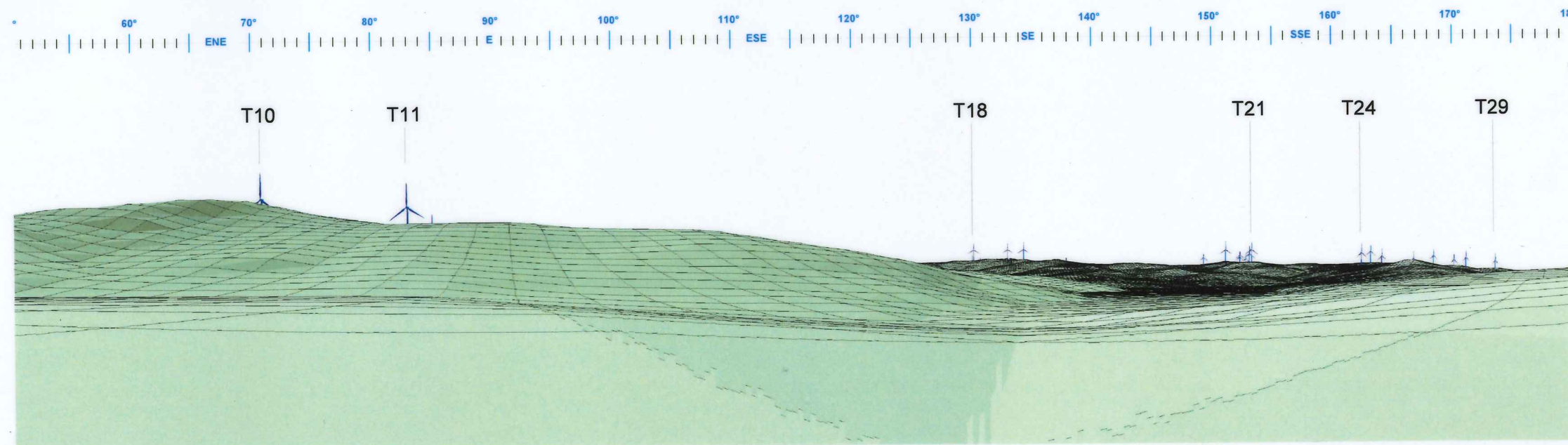
Figure 13 -
 Wire frame W3 from
 Platform Road

GREEN BEAN DESIGN
 landscape architects

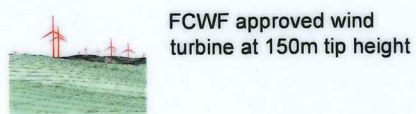
Flyers Creek Wind Farm Modification 4



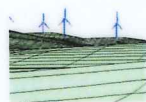
Flyers Creek Wind Farm, Viewpoint W14 looking east north east to south from dwelling 17: Approved 150m tip of blade wind turbines (red) and Mod 4 160m tip of blade wind turbines (blue)
 Approximate distance to closest approved wind turbine (T10) 1,660 metres



Flyers Creek Wind Farm, Viewpoint W14 looking east north east to south from dwelling 17:
 Proposed Mod 4 160m tip of blade wind turbines (blue) only



FCWF approved wind turbine at 150m tip height



Proposed FCWF Mod 4 wind turbine at 160m tip height

Notes:

Views toward wind turbines or portions of wind turbines below the green wireframe will be screened by landform.

The wireframe model does not account for existing tree cover and/or planting which may screen views toward the wind turbines.

Figure 25
 Wire frame W14
 Residence 17

GREEN BEAN DESIGN

landscape architects

Flyers Creek Wind Farm Modification 4