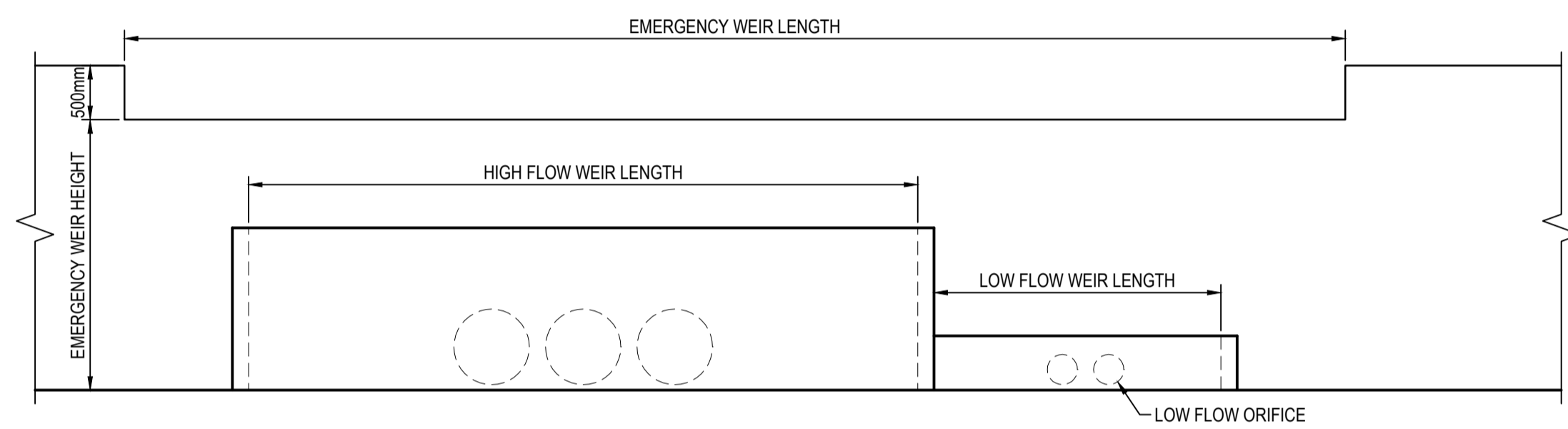
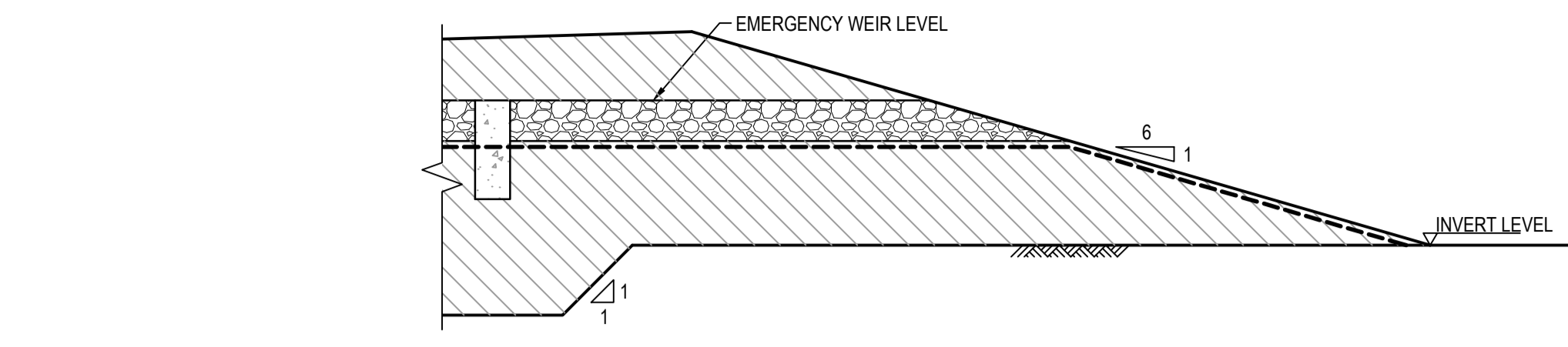


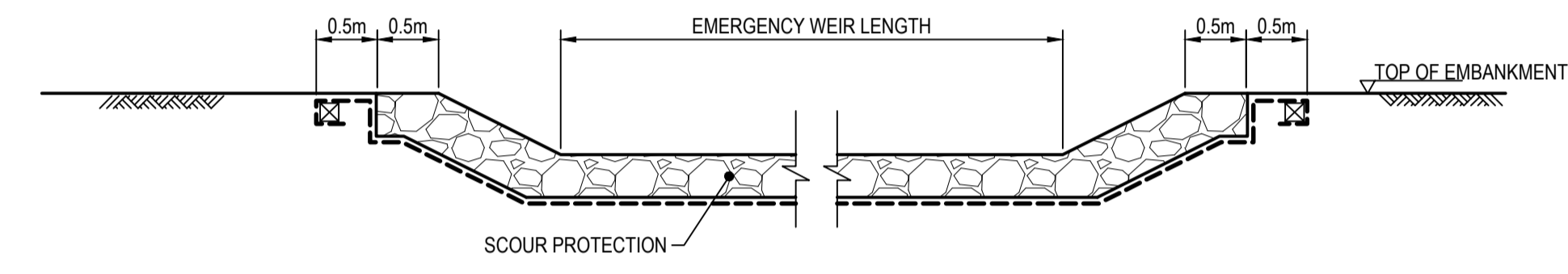
TYPICAL WALLED BASIN AND RAINGARDEN OUTLET PLAN  
NTS



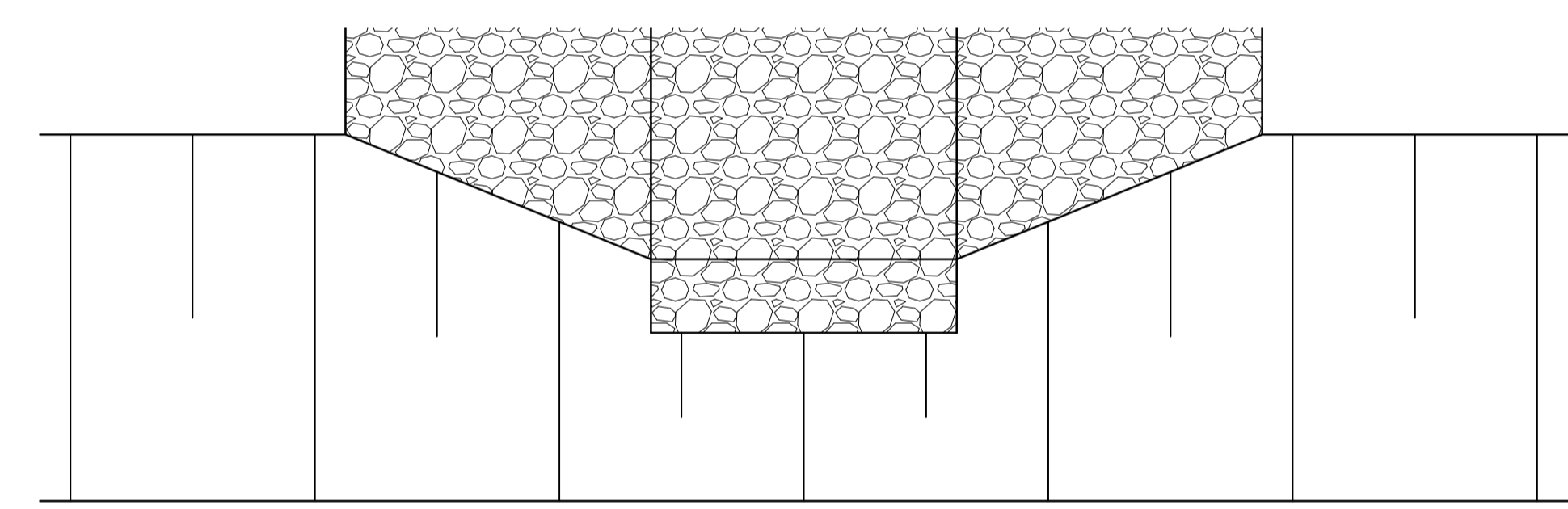
SECTION 2  
N.T.S.



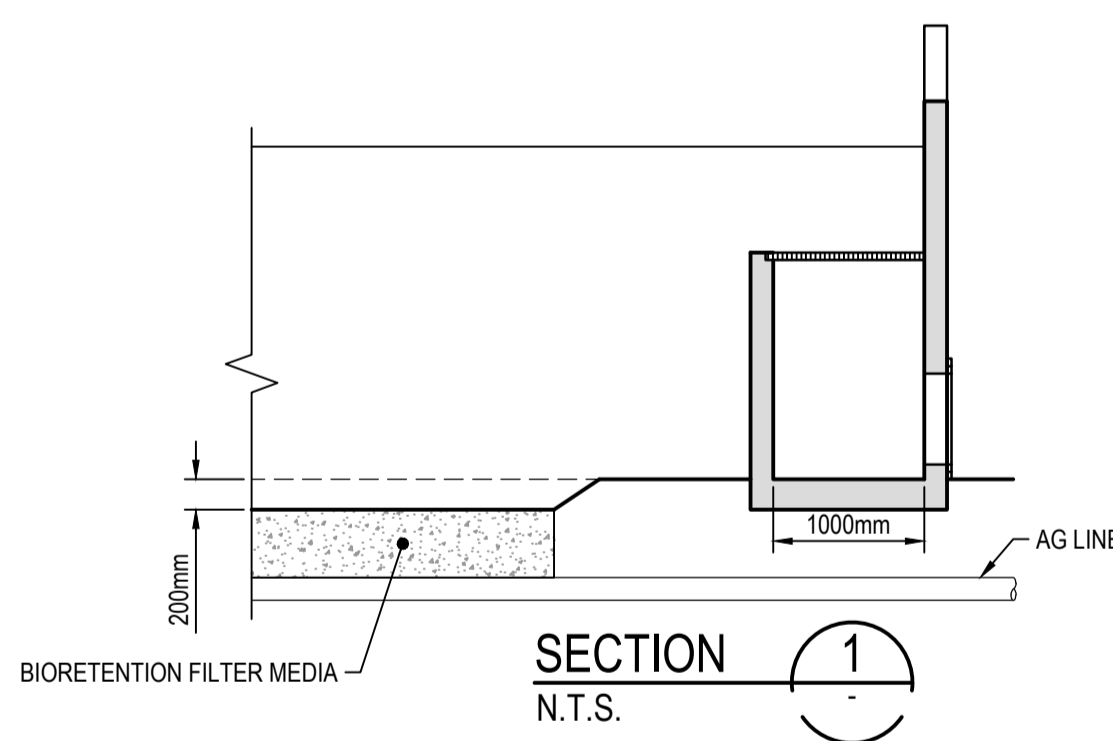
TYPICAL BASIN EMBANKMENT SECTION AT WEIR  
SCALE 1 : 50



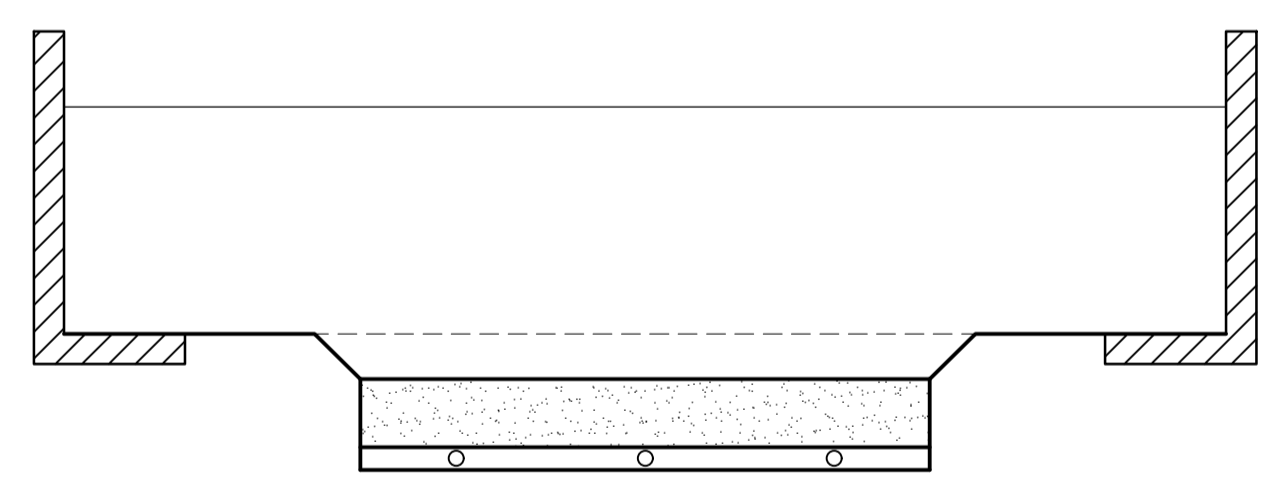
TYPICAL WEIR SECTION  
SCALE 1 : 50



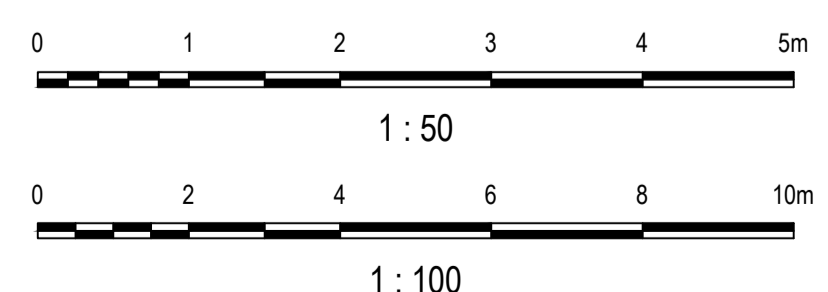
TYPICAL BASIN EMBANKMENT PLAN AT WEIR  
SCALE 1 : 100



SECTION 1  
N.T.S.



STORMWATER BASIN TYPICAL DETAIL  
NTS



Issue	Description	Date
01	SUPERSEDES DRAWING C-MIC2-SSD-416	11/10/2018

Client

Status <b>PRELIMINARY ONLY NOT TO BE USED FOR CONSTRUCTION</b>	
Scales AS SHOWN	Current Issue Signatures Drawn: D.WALL Designed: G.DUNSTAN Checked: M.GOSTELOW Approved: W.OWERS
Original Size A1	Filename: MPW2-ARC-CV-DWG-0321-StormwaterDetails.dwg
Height Datum AHD	
Grid MGA	

Project MOOREBANK PRECINCT WEST - STAGE 2	Title STORMWATER DETAILS
---	-----------------------------

Arcadis Australia Pacific Pty Limited  
Level 16, 580 George St  
SYDNEY NSW 2000  
ABN 76 104 485 289  
Tel No: +61 2 8907 9000  
Fax No: +61 2 8907 9001  
arcadis.com

Project No.  
AA009335

Drawing No.  
MPW2-ARC-CV-DWG-0321-

Issue  
01