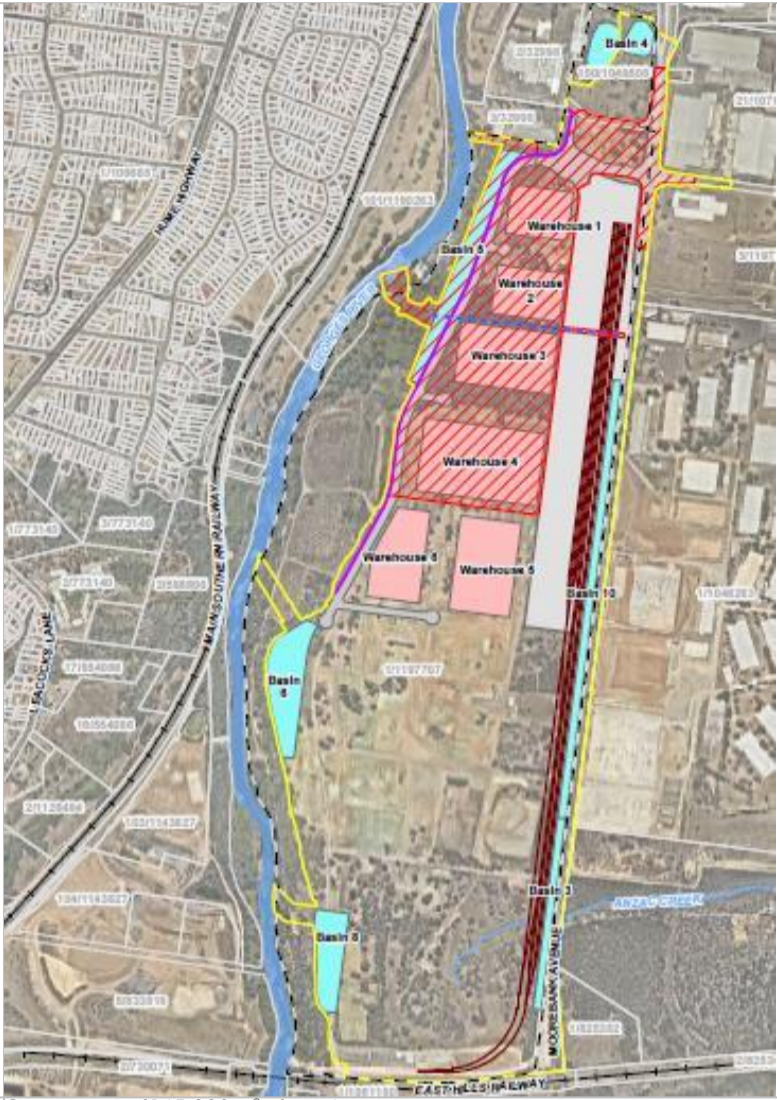


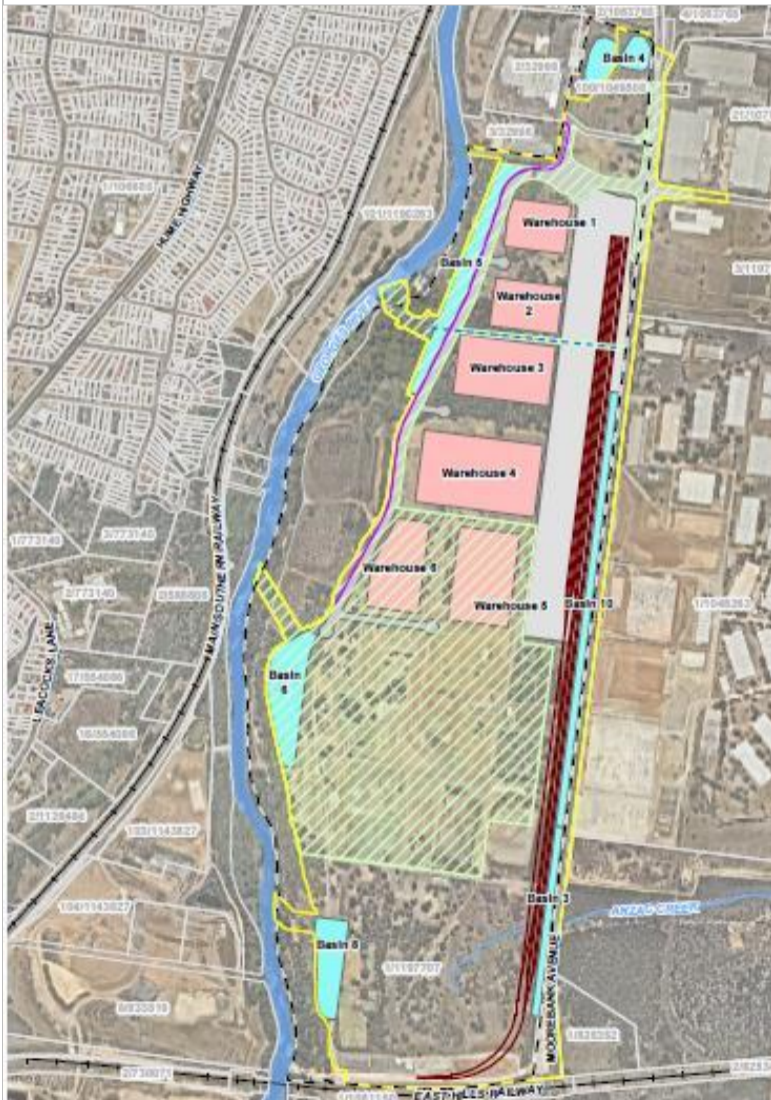
Construction of intermodal terminal and rail link

- Intermodal and Rail Link Phase
- MPW site
- MPW Stage 2 construction area
- IMT facility area
- OGD
- Road
- Warehouse
- Rail link connection
- East-West drainage channel
- Watercourse
- Existing railway



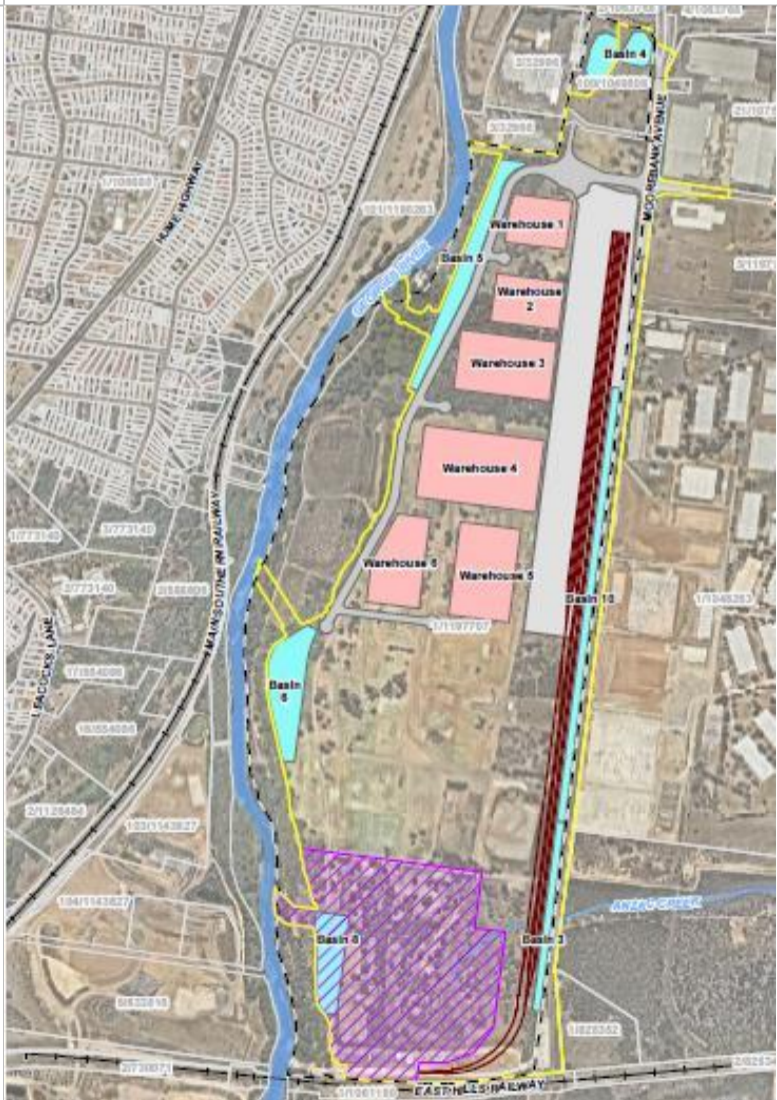
Construction of 145,000 m² of warehousing

- Warehousing North area
- MPW site
- MPW Stage 2 construction area
- Cadastre (NSW DFSI, 2017)
- East-West drainage channel
- IMT facility area
- OGD
- Road
- Warehouse
- Rail link connection
- Watercourse
- Existing railway
- Noise wall
- Watercourse
- Existing railway



Construction of 70,000m² of warehousing and earthworks

- Central Warehousing and Earthworks Phase
- East-West drainage channel
- Cadastre (NSW DFSI, 2017)
- MPW Stage 2 construction area
- IMT facility area
- OGD
- Road
- Warehouse
- Rail link connection
- Watercourse
- Existing railway
- Noise wall
- Watercourse
- Existing railway



Southern earthworks

- Southern Earthworks and OGD phase
- MPW site
- MPW Stage 2 construction area
- IMT facility area
- OGD
- Road
- Warehouse
- Rail link connection
- Watercourse
- Existing railway
- Cadastre (NSW DFSI, 2017)
- Noise wall
- Watercourse
- Existing railway

Figure 3 | Modification Staging (source: Additional Information Response, Arcadis 14/03/2017)