



Keith Hart

Nature Conservation Council

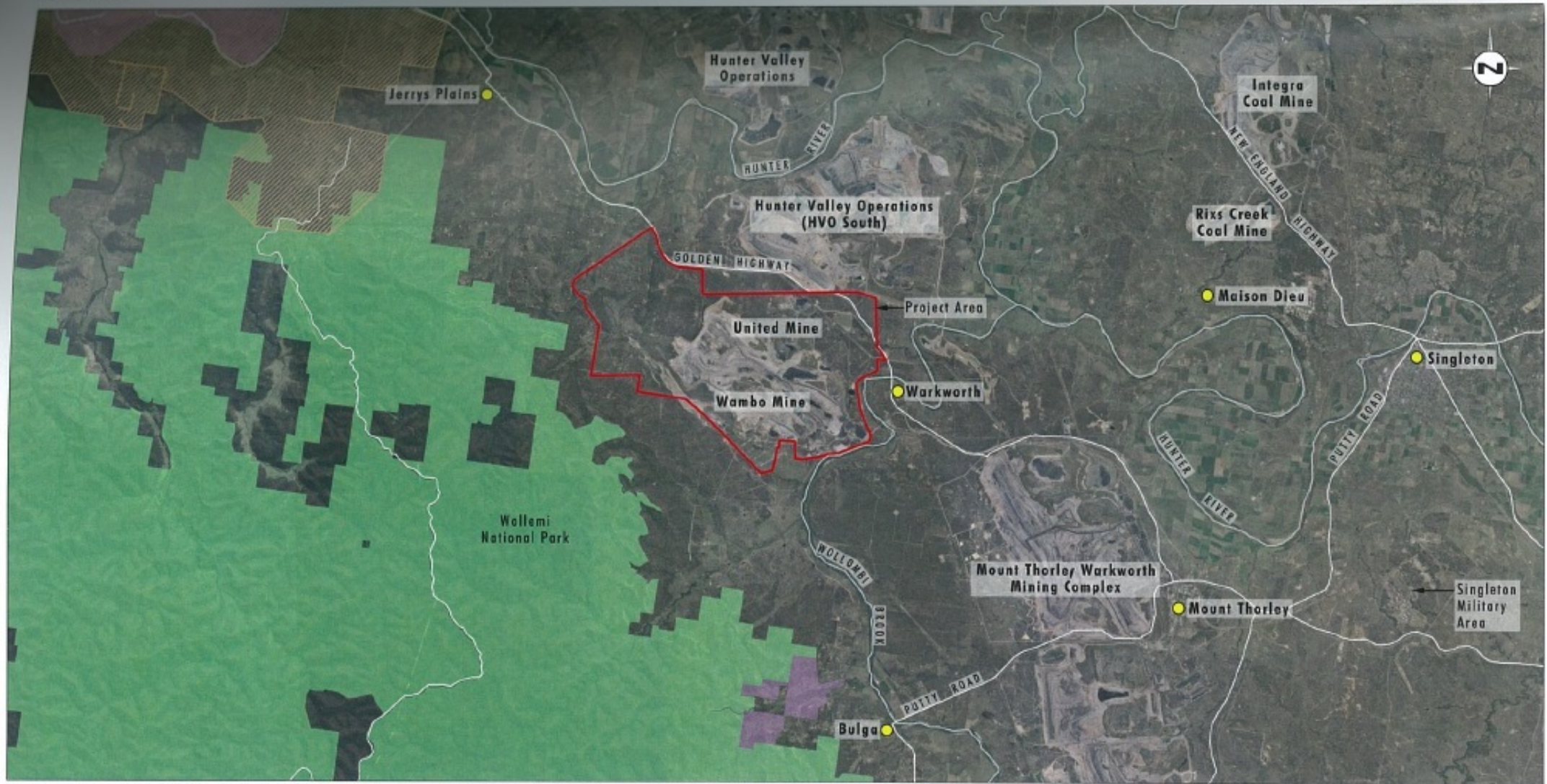


Image Source: AAM (2012), United (2015), Google Earth - CNES/Astrium 2016, Sinclair Knight Merz 2016, (2008)
 Data Source: Glencore (2015), Minview (2015)



Legend

- Project Area
- National Park
- SRLUP Viticulture CIC
- SRLUP Equine CIC
- Road
- River

FIGURE 1.2
 Regional Context





Precautionary Principle

- Where there are threats of serious or irreversible environmental damage (eg the Wambo void lake), lack of full scientific certainty should not be used as a reason to postpone measures to prevent environmental degradation. In this case, those measures would be filling in the mine void
- Where the conditions of the precautionary principle are met, it is up to the proponent to prove that the serious or irreversible damage will not occur

Intergenerational Equity

- The present generation should ensure that the health, diversity and productivity of the environment are maintained or enhanced for the benefit of future generations
- Leaving mine voids to accumulate potentially toxic water for future generations to manage over hundreds of years is contrary to the principle of intergenerational equity

Conservation of biological diversity & ecological integrity

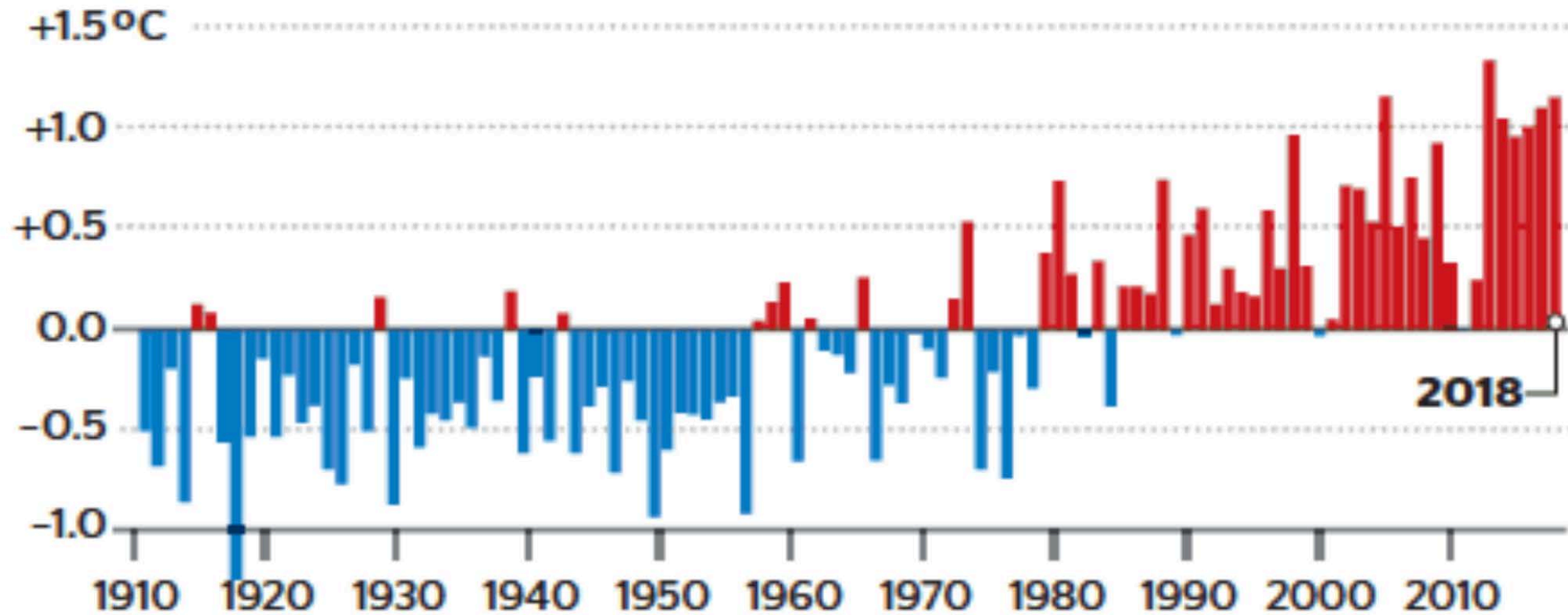
- Conservation of biological diversity and ecological integrity should be a fundamental consideration
- The proposed destruction of the Central Hunter Valley Eucalypt Forest and Woodland CEEC, representing about 12% of the remaining ecological community meeting that description, is the complete opposite to the conservation of biological diversity.

Improved valuation, pricing and incentive mechanisms

- Includes:
- Polluter pays principle – those who generate pollution and waste should bear the cost of containment, avoidance or abatement
- Users of goods and services, including the use of natural resources, should pay prices based on the ultimate disposal of any waste.
- NSW government “regulators” refuse to enforce the filling in of mine voids, allowing foreign corporations to walk away with their enhanced profits while the local NSW community bears the cost of future containment, avoidance or abatement of waste.

Sydney Morning Herald, 11th January, 2019
(temp. variations against a 30 year mean from 1961 – 1990)

AUSTRALIAN MEAN TEMPERATURE ANOMALY







Thank you for your consideration