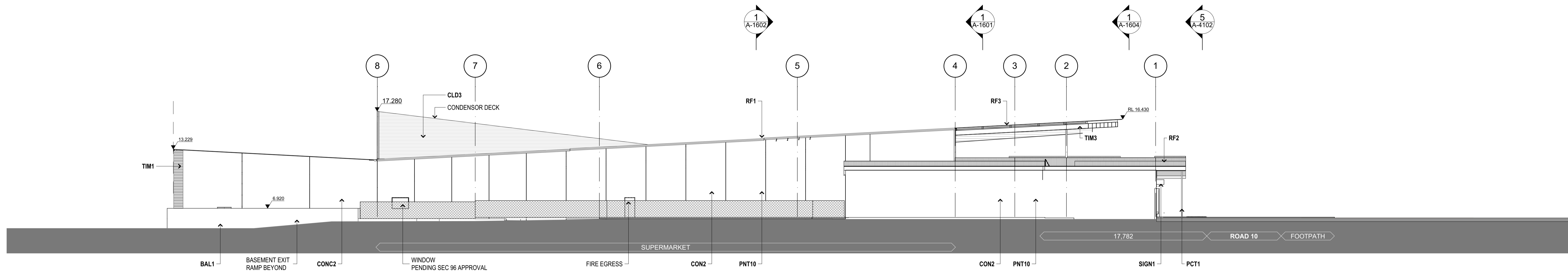


1 ELEVATION
NORTH OVERALL 1:200 @B1



2 ELEVATION
EAST OVERALL 1:200 @B1

NORTH POINT

THIS DOCUMENT IS THE COPYRIGHT OF THE RICE DAUBNEY GROUP (IND) PTY. LTD.
ALL INFORMATION CONTAINED ON THIS DOCUMENT IS TO BE CONFIDENTIAL AND NOT TO BE
REPRODUCED OR TRANSMITTED IN ANY FORM OR BY ANY MEANS, ELECTRONIC OR MECHANICAL,
INCLUDING PHOTOCOPYING, RECORDING, OR BY ANY INFORMATION STORAGE AND RETRIEVAL SYSTEM,
WITHOUT THE WRITTEN PERMISSION OF THE RICE DAUBNEY GROUP (IND) PTY. LTD.

KEY PLAN

REV	DESCRIPTION OF CHANGE	DRAWN	CHECKED	DATE
01	PRELIMINARY	LK	LK	24.08.16
02	ISSUED FOR B/B TENDER	LK	LK	26.07.16
03	ISSUED FOR TENDER	LK	LK	13.09.16
04	ISSUED FOR TENDER	CR	LK	19.09.16
A	ISSUED FOR CONSTRUCTION	RH	RH	13.10.17
B	GENERAL AMENDMENTS	RH	RH	04.12.17
C	WINDOWS AND DOORS UPDATED	RH	RH	05.08.18
D	AS BUILT	RH	RH	26.01.18

JOIN VENTURE PARTNERS

FRASERS PROPERTY AUSTRALIA

1 HOMEBUSH BAY DRIVE
BUILDING C, LEVEL 3
RHODES NSW 2138

P: 02 9787 2000
F: 02 9787 2900

SHELLHARBOUR CITY COUNCIL

1 LAMERTON CRESCENT
SHELLHARBOUR CITY CENTRE
NSW

P: 02 4221 6111
F: 02 4221 6061

ARCHITECTS

RICE DAUBNEY

Level 1, 100 Walker Street, North Sydney NSW 2060, Australia
+61 2 9555 2650 | www.ricedaubney.com | info@icedaubney.com

PROJECT:
THE WATERFRONT
PRECINCT D
SHELL COVE, NSW, AUSTRALIA

DRAWING TITLE:
OVERALL NORTH & EAST
ELEVATIONS

SCALE:
AS SHOWN

CHECKED:
LXK

PROJECT NUMBER:
12009

DRAWING NUMBER:
A-1501

ISSUE:
D

AS BUILT