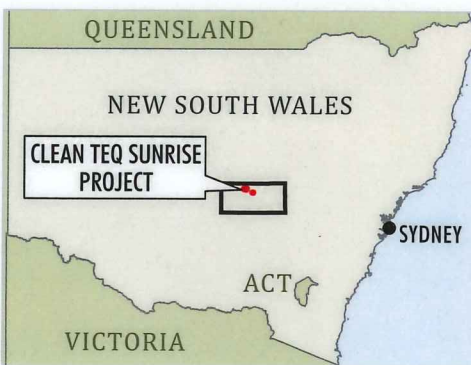


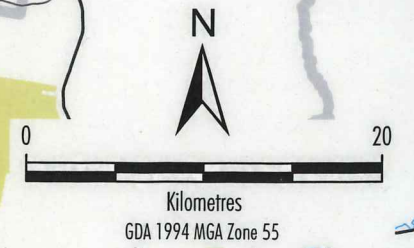
CTL-16-02 Presentation_216C

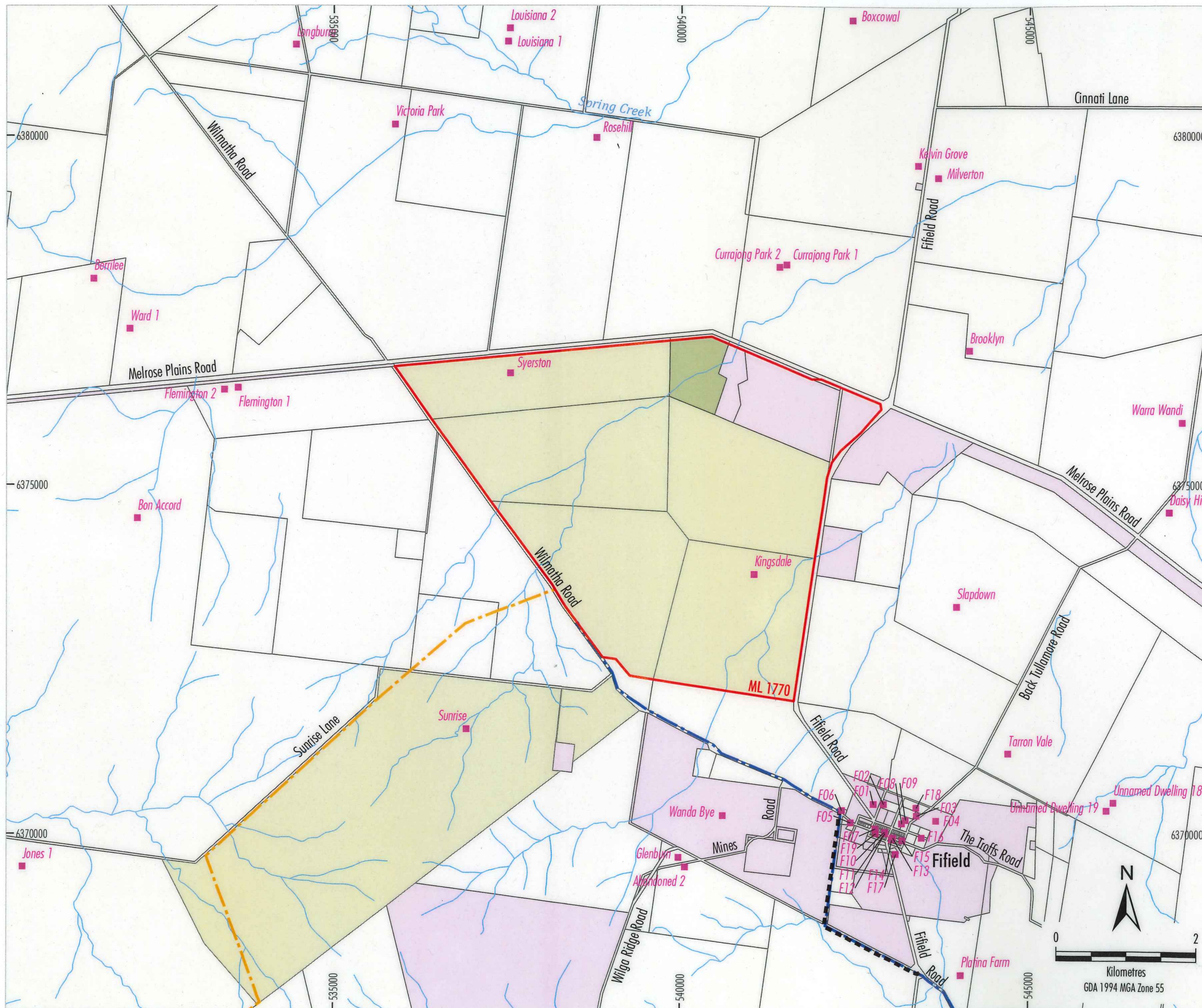


- LEGEND**
- National Park/Conservation Area
 - State Forest
 - Local Government Boundary
 - Existing Gas Pipeline
 - Mining Lease Boundary (ML)
 - Approved Water Pipeline
 - Approved Limestone Quarry Water Pipeline
 - Approved Gas Pipeline
 - Approved Borefield Infrastructure Corridor

- Modified Water Pipeline Alignment Option
- Approved Fifeild Bypass
- Proposed IPC Route

Source: Black Range Minerals (2000); NSW Department of Industry (2018); NSW Land & Property Information (2018); Office of Environment and Heritage NSW (2018)





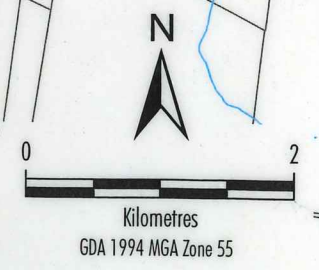
LEGEND

- Mining Lease Boundary (ML)
- Approved Fifield Bypass
- Approved Gas Pipeline
- Approved Water Pipeline
- Clean TeQ Owned Land
- Crown Land
- Fifield State Forest
- Private Landholder
- Dwelling

Source: Black Range Minerals (2000);
 NSW Department of Industry (2017); NSW Land &
 Property Information (2017)



CLEAN TEQ SUNRISE PROJECT
Mine Site Sensitive Receivers





CTL-16-02 Mod4_EA_209C

- LEGEND**
- Approved Fifield Bypass
 - Approved Water Pipeline
 - Modified Water Pipeline Alignment Option

Source: Black Range Minerals (2000);
 NSW Land & Property Information (2017)
 NSW Imagery: © Department of Finance, Services & Innovation (2017)



SYERSTON PROJECT MODIFICATION 4
 Modified Water Pipeline Alignment Option

Figure 20



LEGEND

Posted Speed Limits

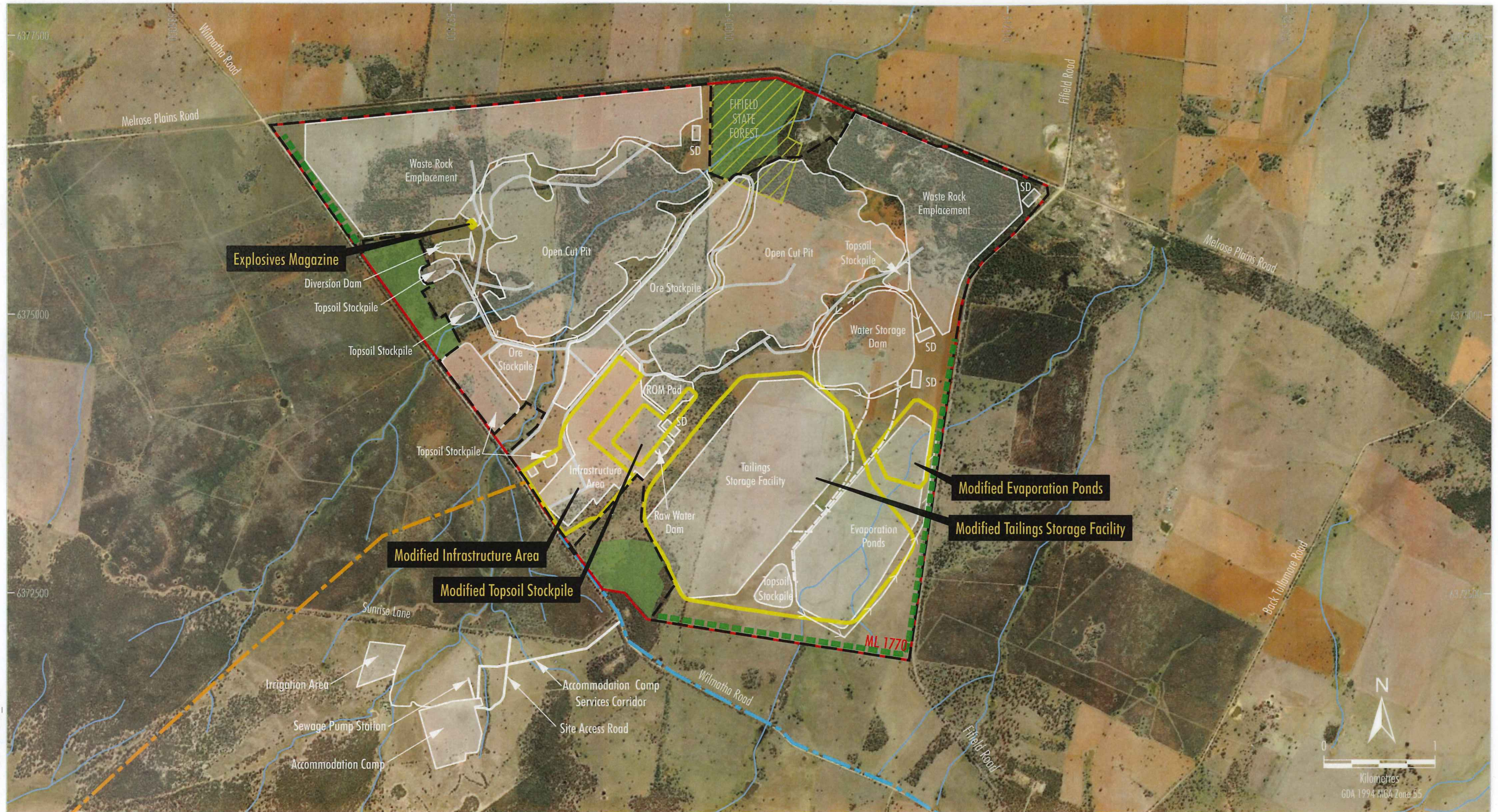
- 100 km/h
- 80 km/h
- 50 km/h
- 40 km/h School Zone
- ✕ School Pedestrian Crossing
- - - Proposed Kerb Treatment
- ⊠ Proposed Threshold Treatment
- Proposed Speed Reduction Warning Sign

Source: NSW Land and Property Information (2017)
 NSW Image: © Department of Finance, Services & Innovation (2017)

CLEAN TEQ
Powering Innovation

CLEAN TEQ SUNRISE PROJECT
 Recommended Treatments

Figure 5.1



CTL-17-04 Present June 2018_2018

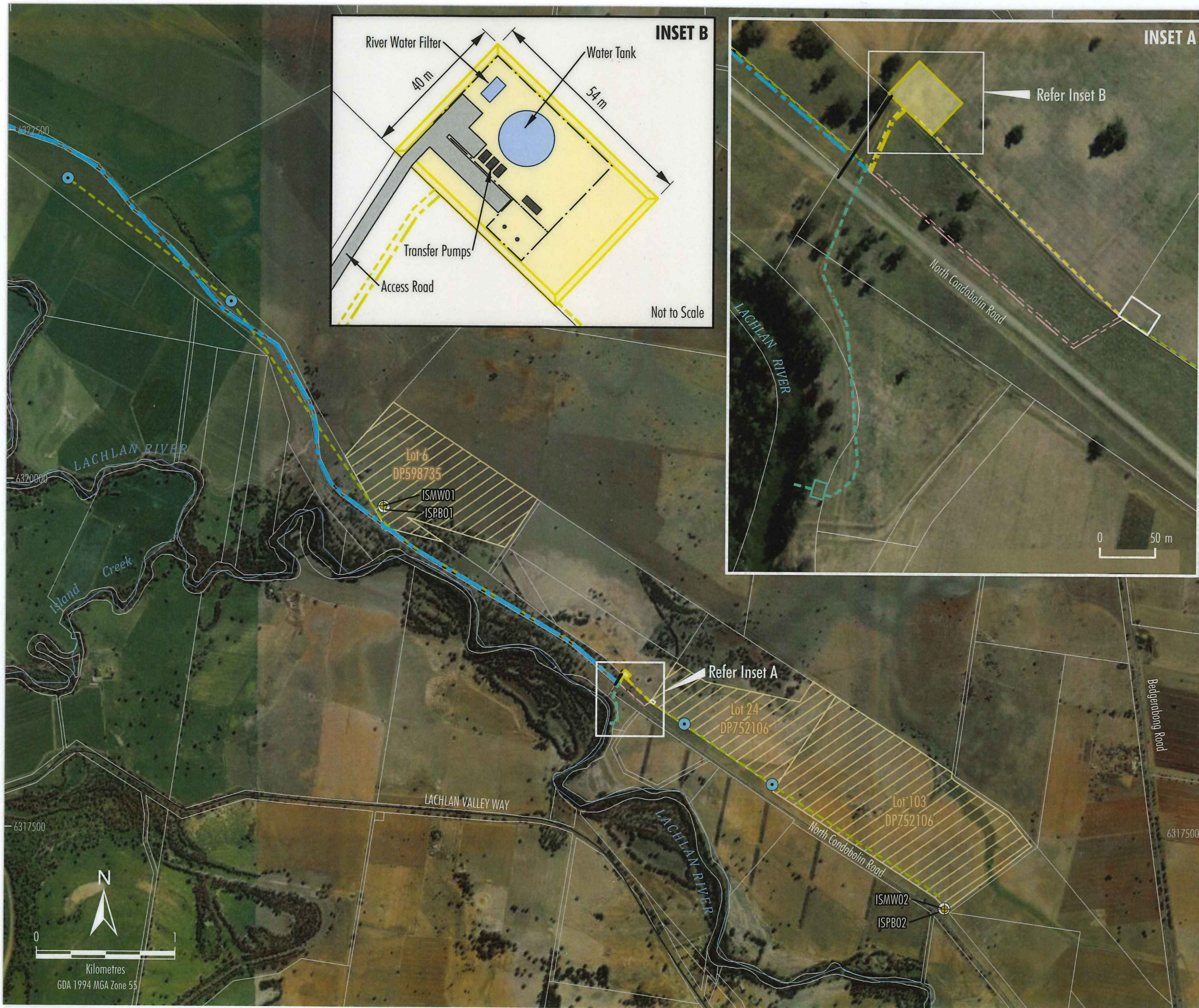
- LEGEND**
- State Forest
 - Mining Lease Boundary (ML)
 - Approved Surface Development Area
 - Approved Mine Footprint
 - Diversion Structure
 - Key Site Water Pipeline
 - Approved Gas Pipeline
 - Approved Water Pipeline
 - Vegetation Screening
 - Existing Open Woodland

Modified Layout

Source: Black Range Minerals (2005); NSW Department of Industry (2017); NSW Land and Property Information (2017)
 NSW Imagery: © Department of Finance, Services & Innovation (2017)



CLEAN TEQ SUNRISE PROJECT
Indicative Modified Mine and Processing Facility
General Arrangement



- LEGEND**
- Property Boundary
 - Approved Project
 - Transfer Station
 - Water Pipeline
 - Borefield Infrastructure Corridor *
 - Potential Borefield Location
 - Approximate Location of Production Bore (not constructed)
 - Production Bore (constructed)
 - ⊕ Monitoring Bore
 - Modified Project**
 - Transfer Station
 - Pump Station
 - Access Road
 - Water Pipeline
 - Borefield Infrastructure Corridor *
 - Surface Water Infrastructure Corridor *
 - Approved Water Pipeline Section no longer required
 - Approved Borefield Infrastructure Corridor section no longer required

* Infrastructure Corridor includes linking pipeline, access road and electricity transmission line.

Source: NSW Land & Property Information (2017);
Ivanplats Syerston (2005)
NSW Imagery: © Department of Finance, Services & Innovation (2017)



SYERSTON PROJECT MODIFICATION 4
Modified Borefields and
Surface Water Extraction -
Post Water Pipeline Commissioning

Figure 16