

## APPENDIX A – INSTRUMENT OF MODIFICATION

# Modification to Minister's Approval

## Section 75W of the *Environmental Planning and Assessment Act 1979*

As delegate for the Minister for Planning under delegation executed on 14 September 2011, we the Independent Planning Commission of New South Wales (the Commission) hereby approve the modification of the project approval referred to in Schedule 1, subject to the conditions outlined in Schedule 2.

### Member of the Commission

Sydney 2018

---

### SCHEDULE 1

Application Number: MP 06\_0228  
Proponent: Shoalhaven Starches Pty Ltd  
Approval authority: Minister for Planning  
Project: Shoalhaven Starches Expansion Project  
Date of original approval: 29 January 2009  
Modification: MP 06\_0228 MOD 15 – Carbon Dioxide Plant

---

### SCHEDULE 2

This approval is modified by:

#### In the Definitions List:

1. Replacing the following definition:

Project The development described in the EA, which includes the continued implementation of all existing and approved development on site, as modified by MP 06\_0228 MOD 1, MP 06\_0228 MOD 2, MP 06\_0228 MOD 3, MP 06\_0228 MOD 4, MP 06\_0228 MOD 5, MP 06\_0228 MOD 6, MP 06\_0228 MOD 7, MP 06\_0228 MOD 8, MP 06\_0228 MOD 9, MP 06\_0228 MOD 10, MP 06\_0228 MOD 11, MP 06\_0228 MOD 12, MP 06\_0228 MOD 13, MP 06\_0228 MOD 14 and MP 06\_0228 MOD 15

2. Replacing the following definition:

Statement of Commitments The Proponent's commitments in the EA and MOD 1, MOD 2, MOD 3, MOD 4, MOD 5, MOD 6, MOD 7, MOD 8, MOD 9, MOD 10, MOD 11, MOD 12, MOD 13, MOD 14 and MOD 15

#### In Schedule 2: Administrative Conditions:

3. Inserting new Condition 2p) after Condition 2o) as follows:

p) modification request MP 06\_0228 (MOD 15), accompanying Environmental Assessment and plans dated February 2018 and updated plans dated 9 May 2018, prepared by Cowman Stoddart Pty Ltd (see Appendix 2O).

**In Schedule 3: Specific Environmental Conditions:**

4. Inserting a new Condition 10B after Condition 10A as follows:

**Cooling Tower – MOD 15**

10B) The Proponent shall install, register and maintain cooling towers in accordance with the *Public Health Act 2010*.

5. Inserting a new Condition 26H after Condition 26G as follows:

**Works on Waterfront Land**

33A) The Proponent must ensure works within 40 metres of the Shoalhaven River bank are undertaken in accordance with the Guidelines for Controlled Activities on Waterfront Land 2012.

6. Inserting a new Condition 32A after Condition 32 as follows:

33A) Prior to the commencement of construction of MOD 15, the Proponent must delineate truck parking areas on the Dairy Farmers site to ensure adequate space is provided for trucks accessing the carbon dioxide plant.

7. Inserting new Condition 20F after Condition 20E as follows:

20F) The Proponent must update the unexpected finds protocol required by condition 20B to include procedures to manage material containing bonded asbestos. The Proponent shall remove asbestos containing materials in accordance with the requirements of Condition 9B in Schedule 2.

8. Inserting the following bullets at the end of the bulleted list in Condition 36c:

- evaluate and confirm automatic isolation, both local and remote for carbon dioxide iso-container loadout.

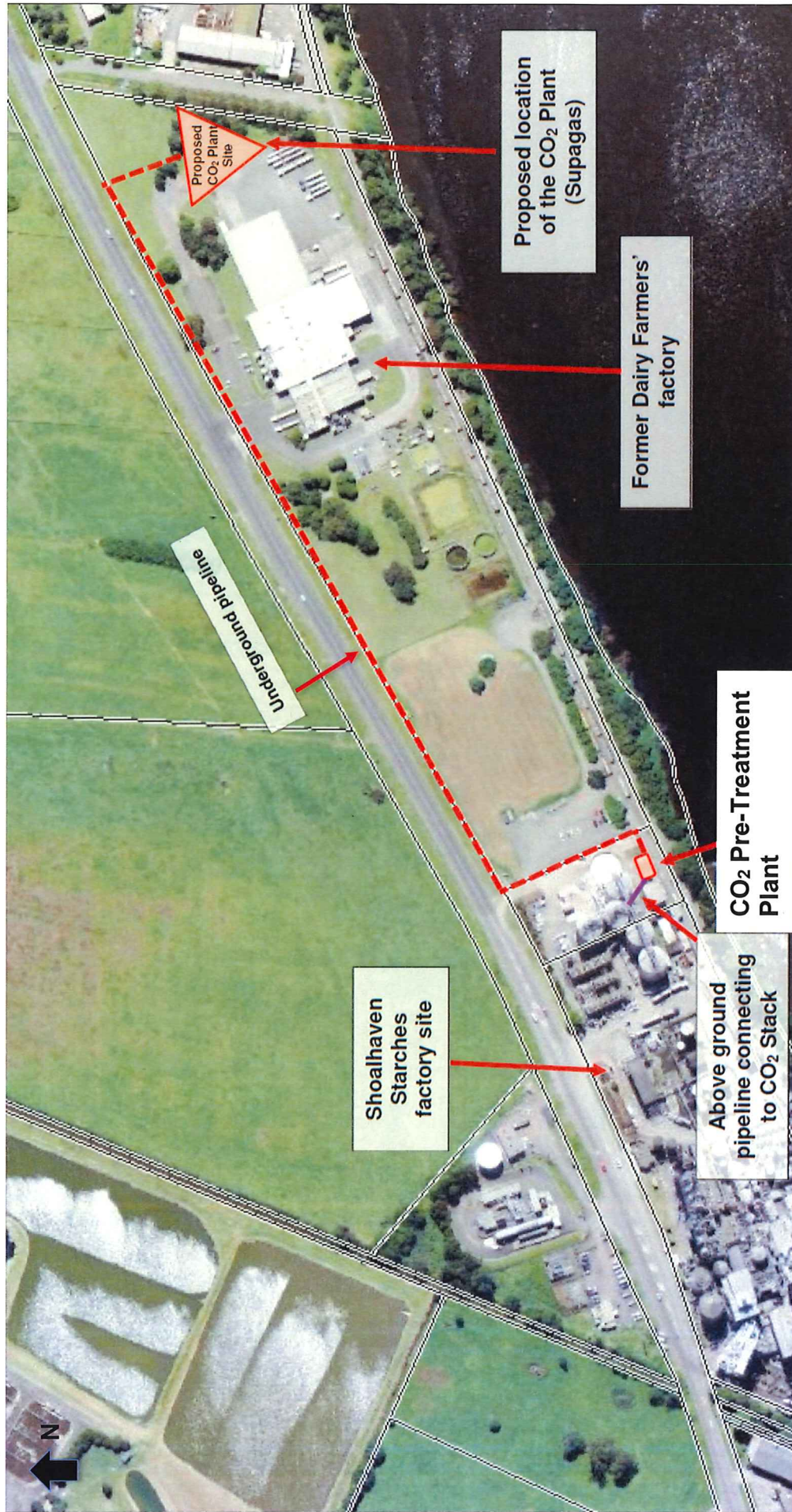
9. Inserting new Condition 46C after Condition 46B as follows:

46B) The Proponent must plant screening vegetation in front of the carbon dioxide plant at the Dairy Farmers site, no later than 31 December 2018.

**In the Appendices:**

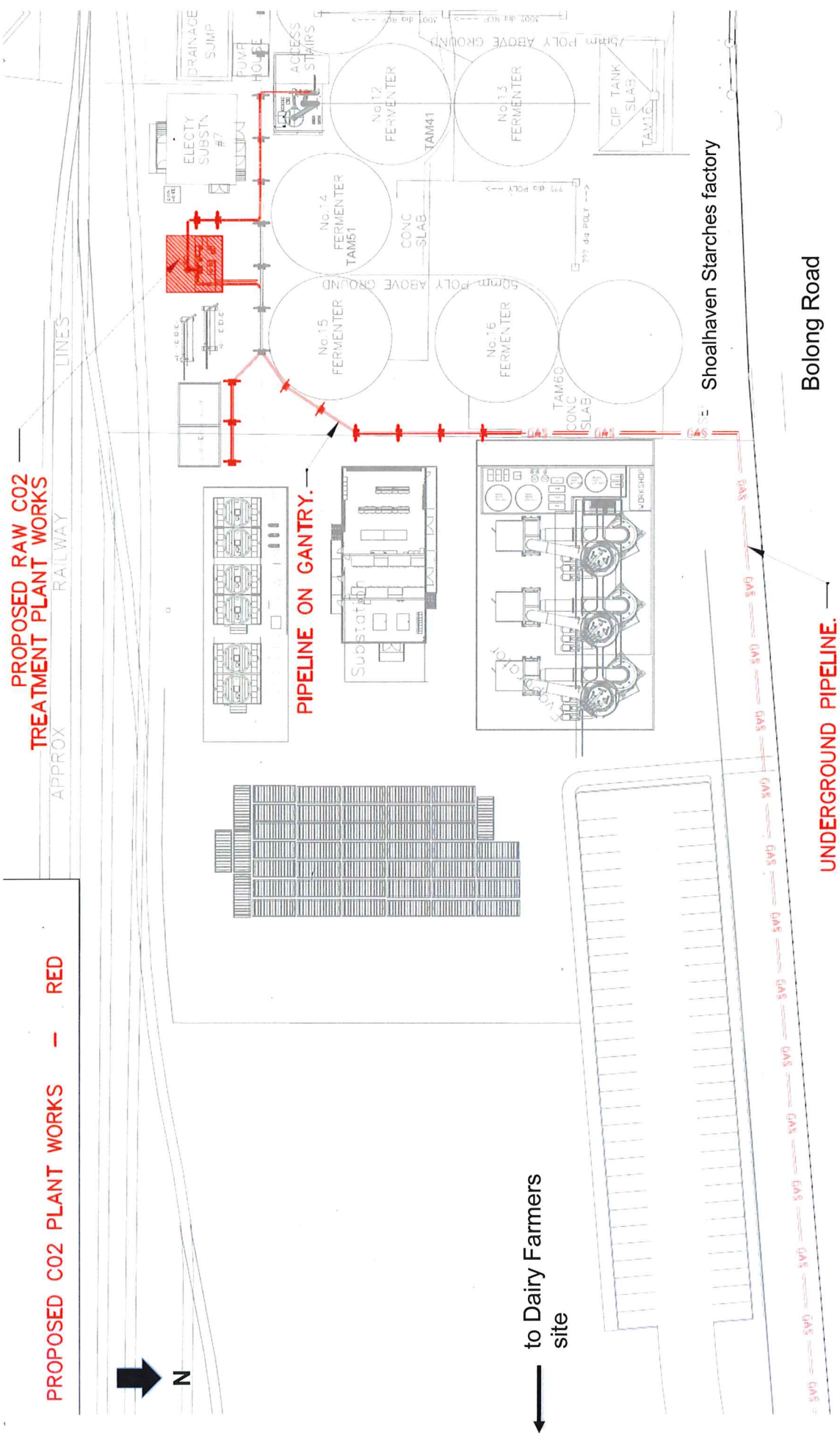
27. Inserting a new Appendix 2O after Appendix 2N as follows:

APPENDIX 20 – SITE PLANS (MP 06\_0228 MOD 15)

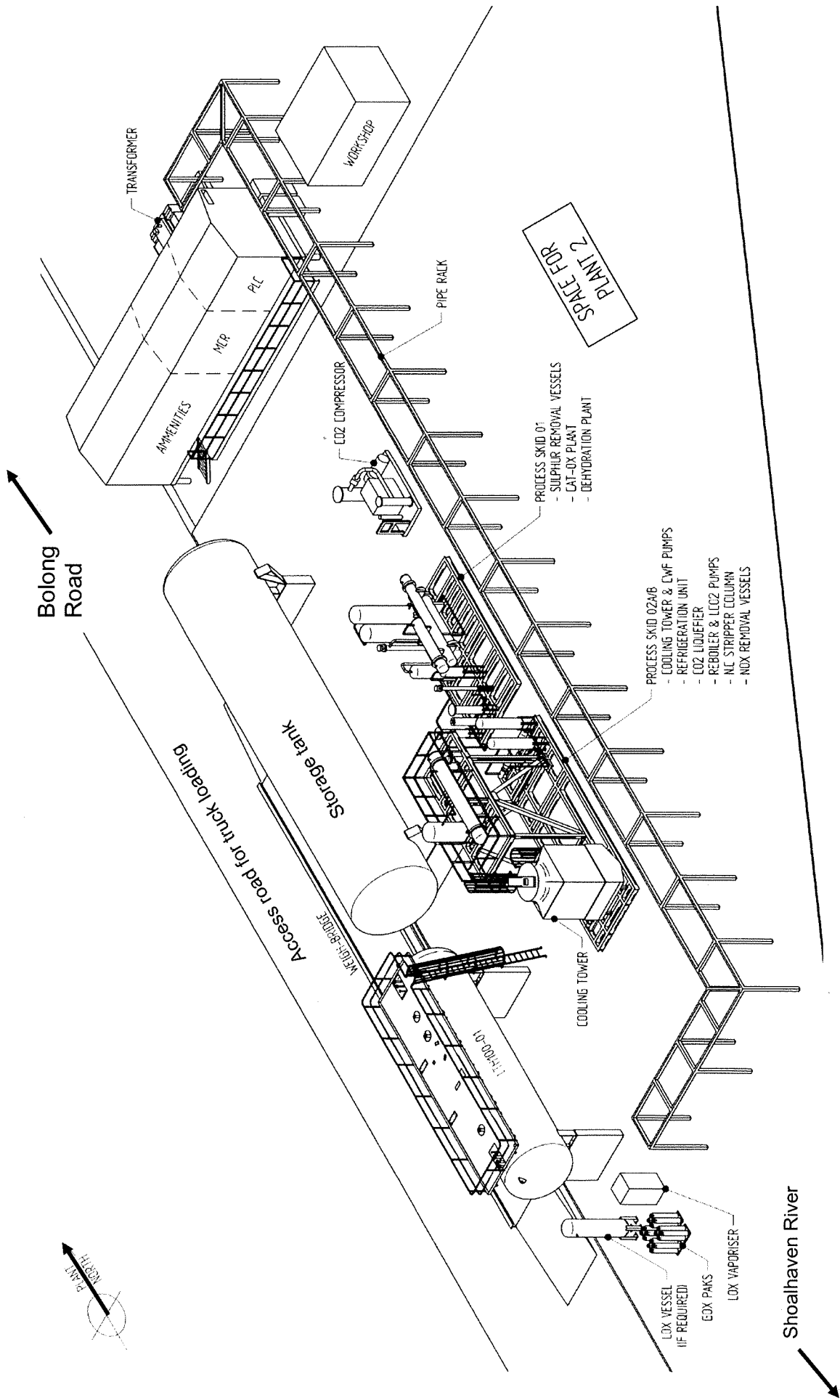


Location of Main CO<sub>2</sub> Plant, Pre-Treatment Plant and Pipelines





Key Components of Carbon Dioxide Pre-Treatment Plant on the Factory Site



Main Carbon Dioxide Processing Plant at the Dairy Farmers Site



**PROPOSED ETHANOL  
PLANT CONTROL ROOM.**

141  
DP  
1069758

OPEN PADDOCKS

MANLERA LAND

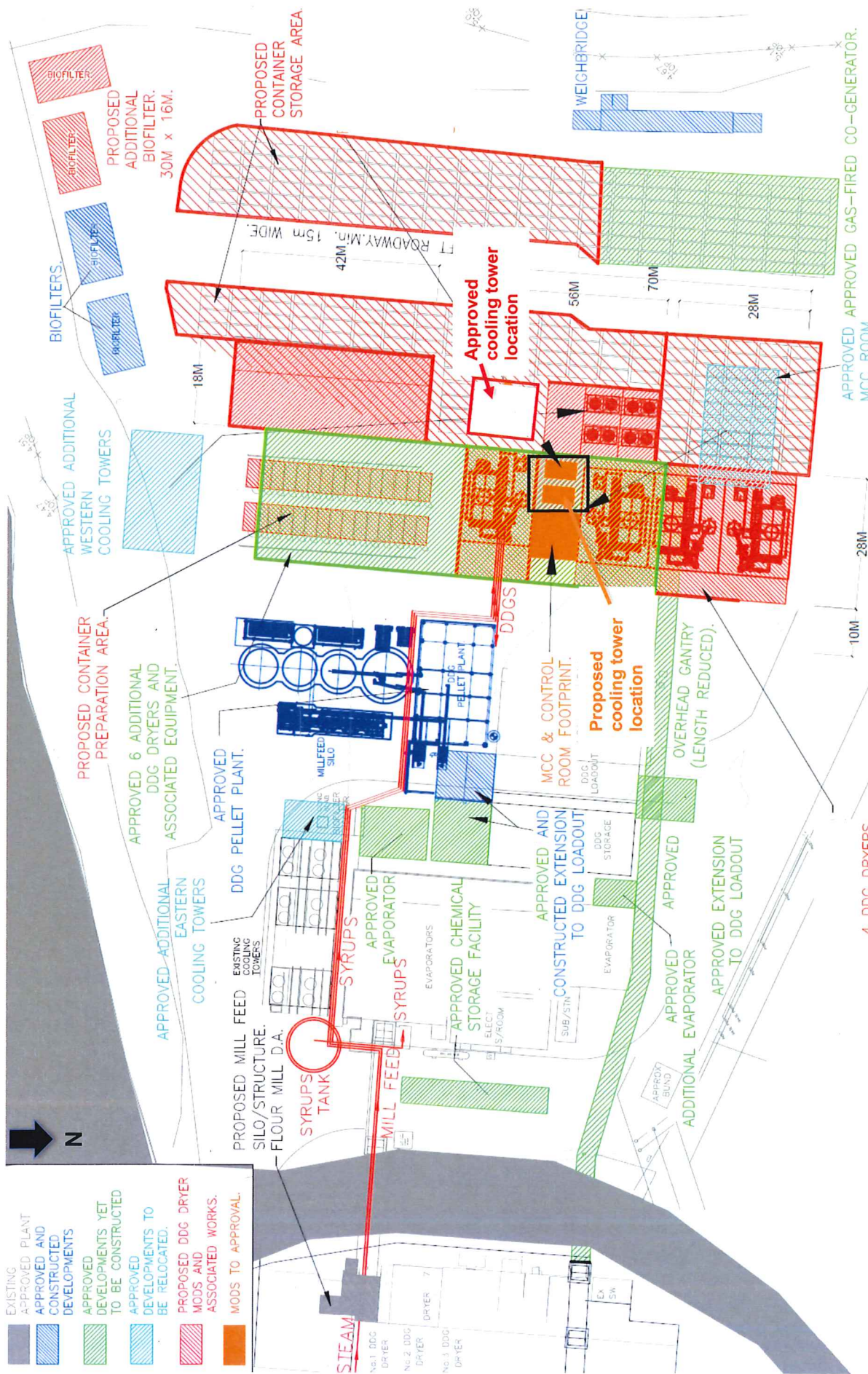
MANLERA LAND

MANLERA LAND

Ethanol Plant Control Room



- EXISTING PLANT
- APPROVED AND CONSTRUCTED DEVELOPMENTS
- APPROVED DEVELOPMENTS YET TO BE CONSTRUCTED
- APPROVED DEVELOPMENTS TO BE RELOCATED.
- PROPOSED DDG DRYER MODS AND ASSOCIATED WORKS.
- MODS TO APPROVAL.



4 DDG DRYERS,  
70M x 28M.

Relocation of Cooling Towers at Dried Distillers Grain Plant