

9th July 2018

Independent Planning Commission NSW
Level 3
201 Elizabeth Street
Sydney NSW 2000

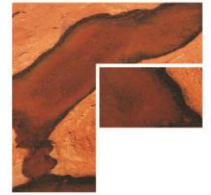
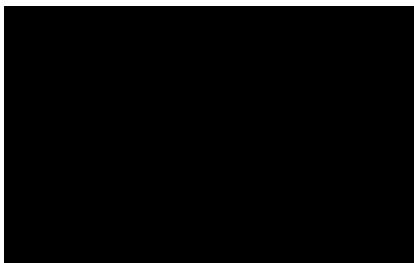
To whom it may concern

RE: MOUNT PLEASANT COAL MINE EXTENSION OF MINE LIFE (DA 92/97 MOD 3)

Fyfe would like to make a positive submission towards MOD 3. Supporting comments are as follows:

- Fyfe have been involved in the project well before MACH Energy's involvement.
- Since MACH Energy's involvement has seen the greatest improvement for our office.
- Fyfe's employees – affects 10 directly.
- Employee's families – affects 32 indirectly.
- The continuation of the project will provide certainty and security for our employees and their families.
- Will make the town's economy stronger allowing for better facilities and amenity.
- The modification updates a design that was over 20 years old.
- MOD3 is a small change that will provide a better use of the resource and also better more effective rehabilitation.
- MACH Energy has positively contributed not only to our business, but the greater community.
- We have invested in our people throughout the project to help improve their skills and competencies.
- The opportunities for training and advancement of talents have been tremendous.
- The continuation of the project is simply of great significance to our technical business and staff.

Yours sincerely



FYFE

ENVIRONMENT
DEVELOPMENT
RESOURCES

54 Brook Street
Muswellbrook NSW 2333

Telephone 61 2 6543 3600
Facsimile 61 8 8201 9650
www.fyfe.com.au

FYFE PTY LTD
ABN 57 008 116 130

35
YEARS
DEVELOPING
CAREERS & PROJECTS