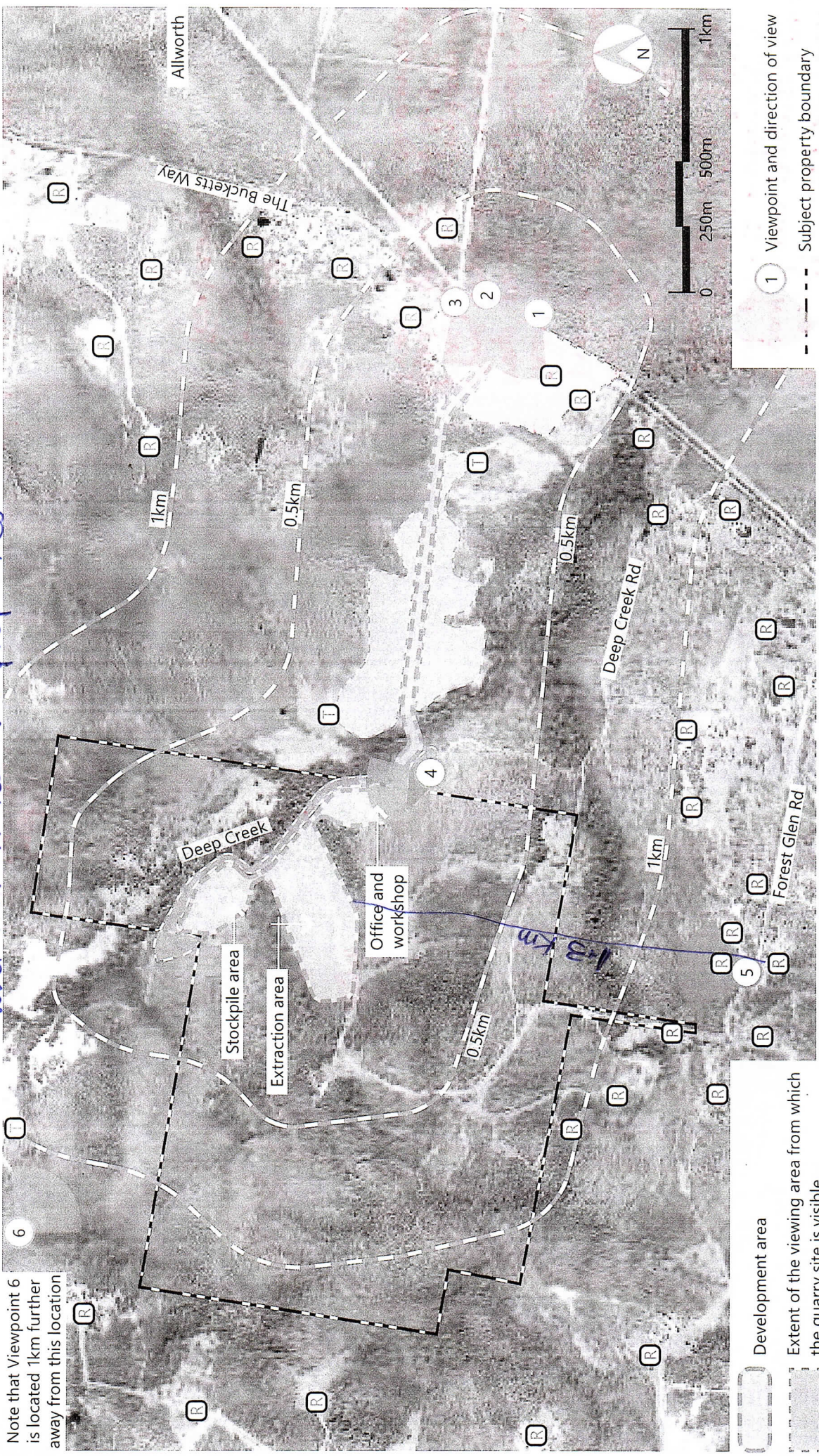


*Our place 1.3 km or less from pit, closer to other people and their homes and properties.*



Note that Viewpoint 6 is located 1km further away from this location.

- 1 Viewpoint and direction of view
- - - Subject property boundary
- R Residential structure
- T Temporary cabin structure

- Development area
- Extent of the viewing area from which the quarry site is visible
- Extent of the viewing area from which the proposed access road is visible

**Figure 5.2:** Viewing zones  
The view locations are shown with the number associated with the visual assessment in Section 6 of this report

*(Attach Contour map)*

*Number 5 on this map is our Property at 151 82 metres above sea level, looking at the bushland mountains they want to blast apart if approved*