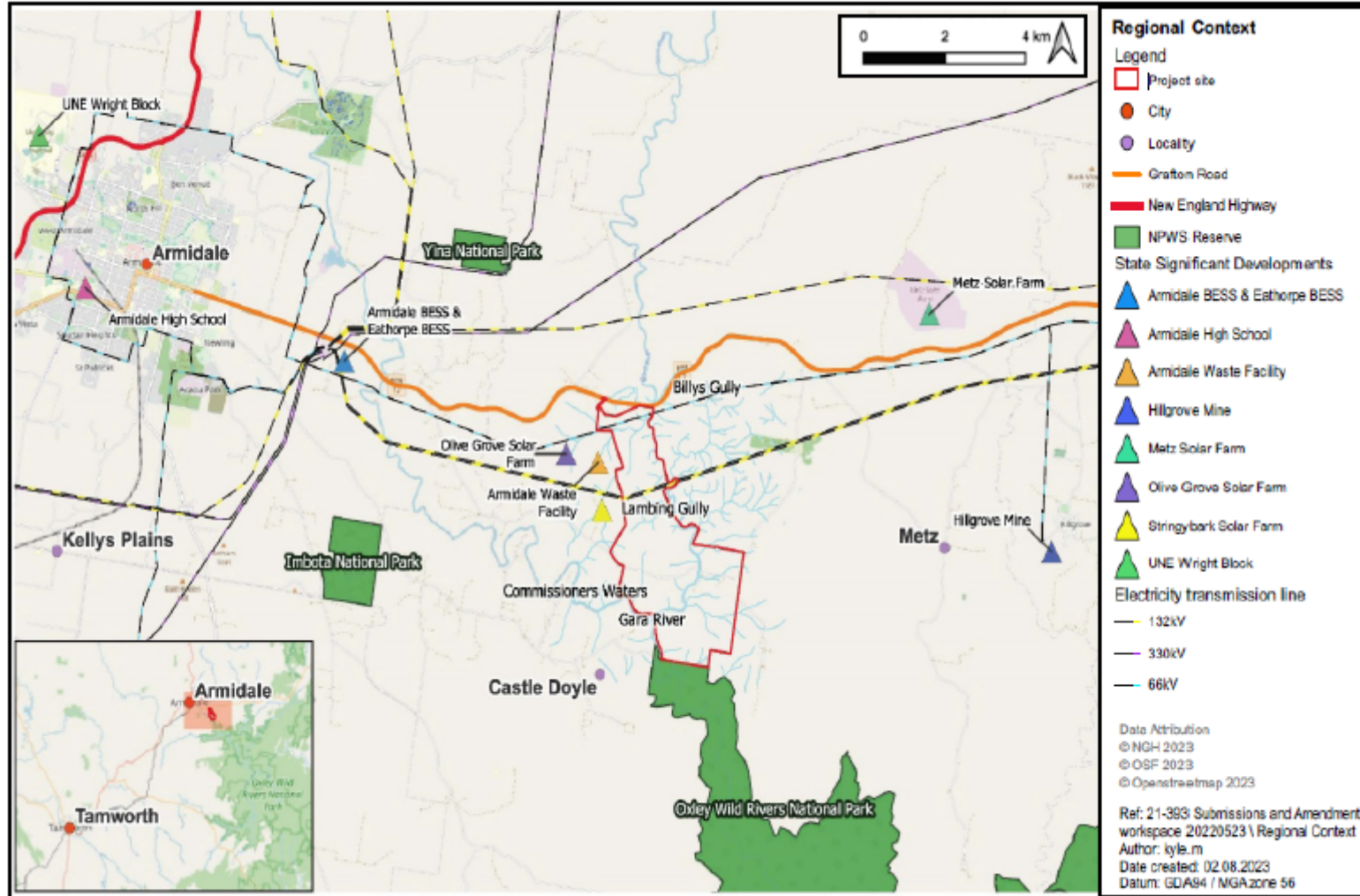


Oxley Solar Farm

**INDEPENDENT PLANNING COMMISSION (IPC)
PUBLIC MEETING PRESENTATION
17TH OCTOBER 2023**

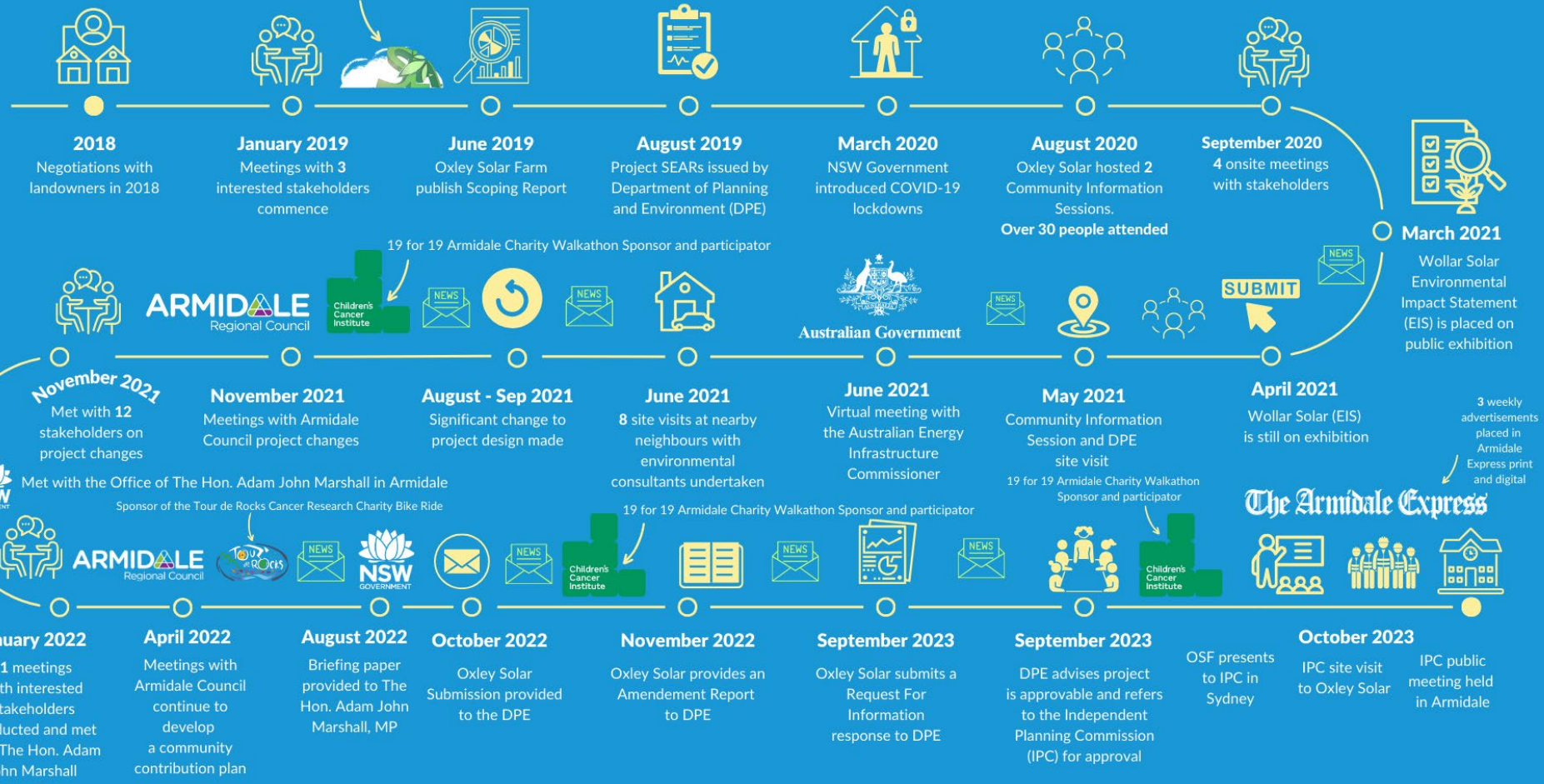
Oxley Solar Farm locality context



Oxley Solar Farm – Project activity timeline



Met with Sustainable Living Armidale to provide project overview



OUR COMMITMENT TO STAKEHOLDER ENGAGEMENT

10

10 newsletters posted on OSF website and sent to everyone on the project stakeholder list

32

Over 32 people attended public information sessions in person after newspaper advertisements and radio/tv media activities in 2020

50

Over 50 site visits to residences / properties in the general project area

150

Over 150 emails and telephone calls with stakeholders



Australian Government



NSW
GOVERNMENT

ARMIDALE
Regional Council

Ongoing liaison over the project life with Armidale Regional Council plus State and Federal Governments

The Armidale Express

Print media advertisements notifying the community of the current IPC process



Oxley Solar Farm

Since the commencement of project, Oxley Solar Farm has and will continue to be available to be contacted by the community via web, email or phone



Public Submissions

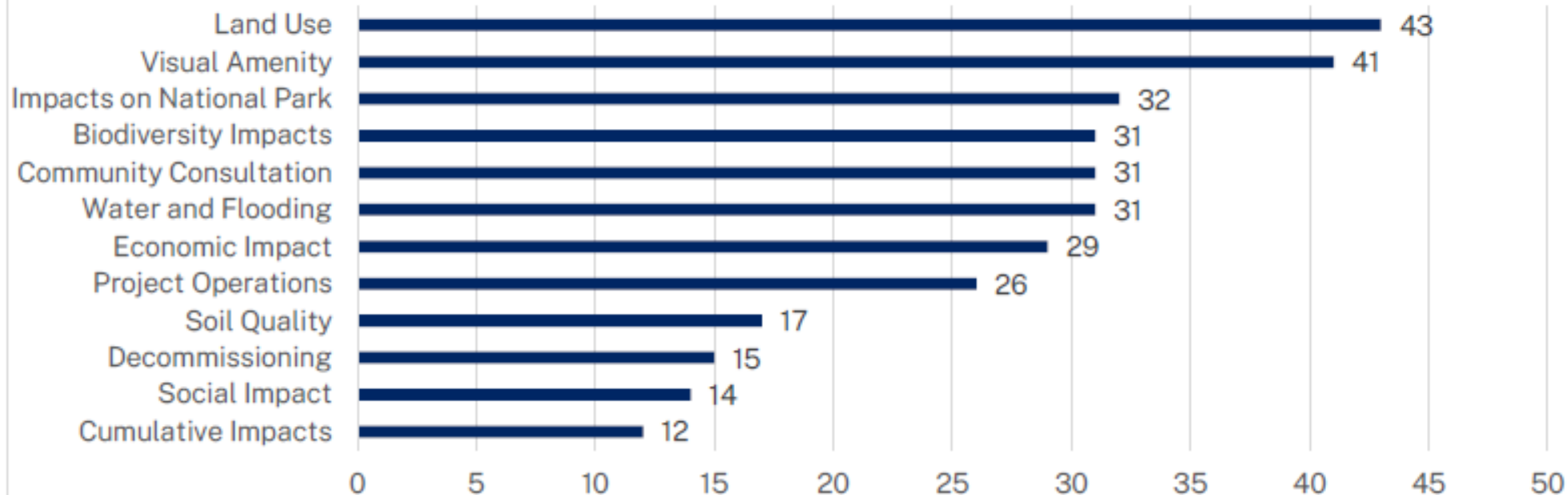
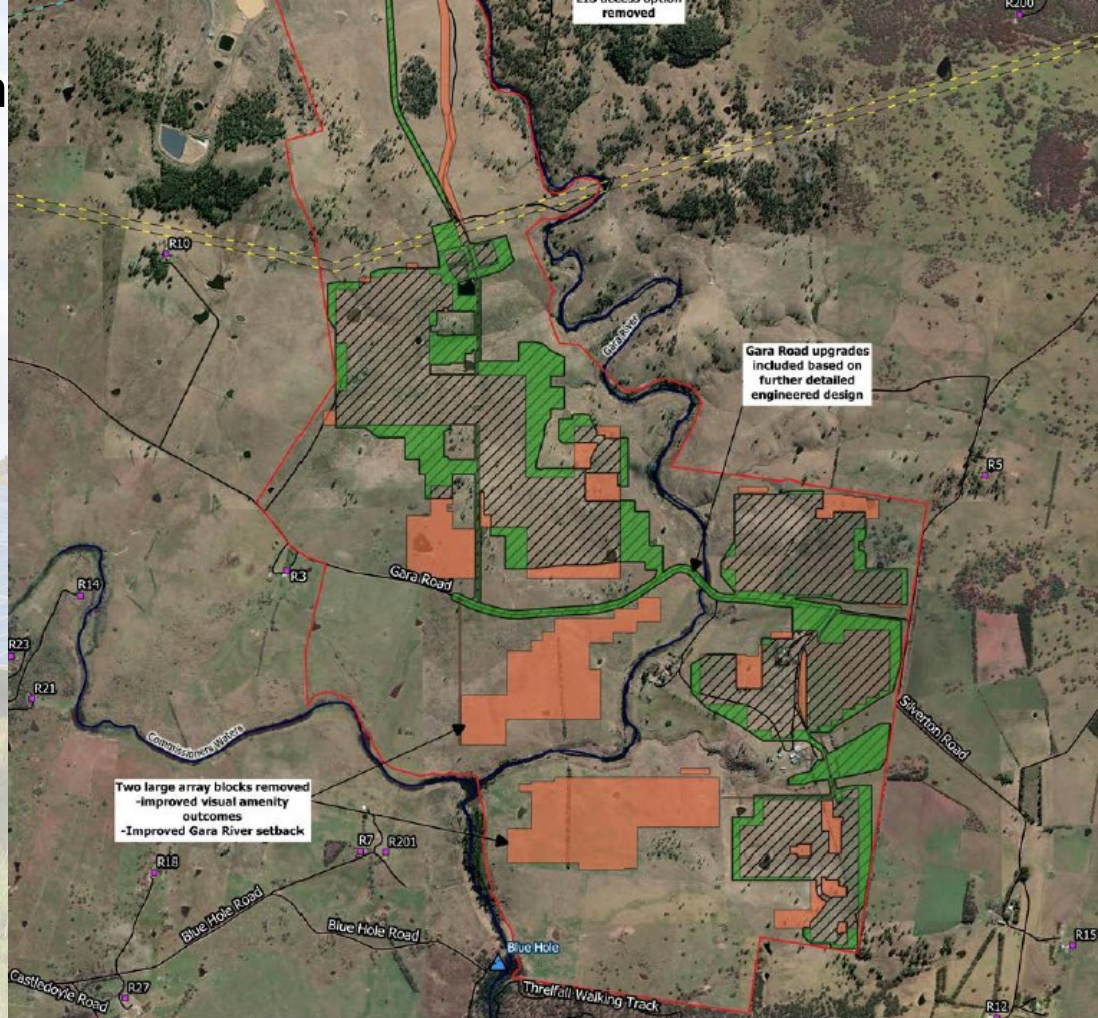


Figure 4 | Key Issues Raised in Public Submissions

Oxley Solar Farm footprint area reduction in response to public feedback



Development Footprint changes from EIS (EIS indicative layout compared to Amendment

Legend	
Project Boundary	Electricity transmission lines
Development Footprint	132kV
Roads	66kV
Development Footprint changes	Waterways
>5th Order Stream	>5th Order Stream

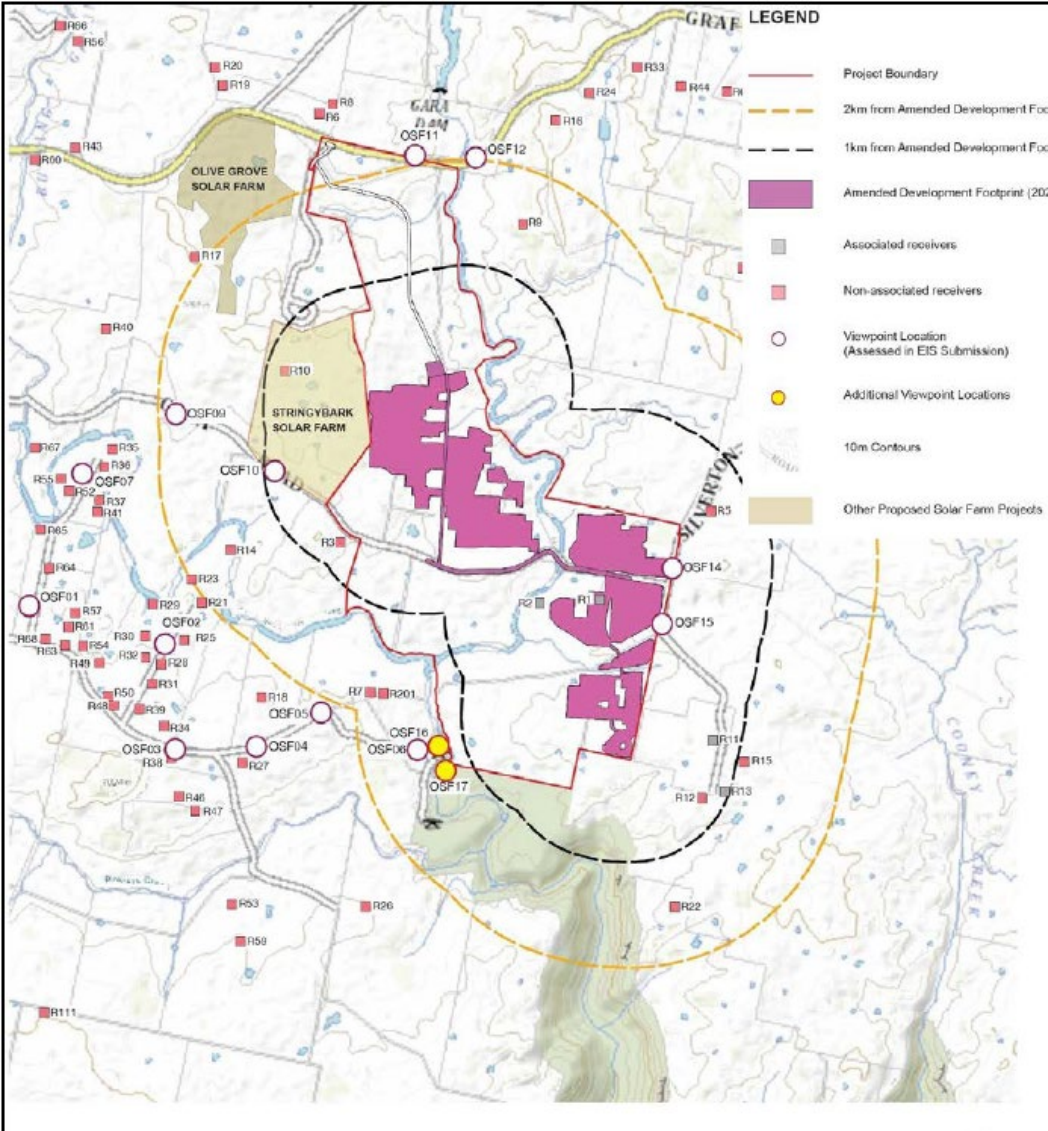
Data Attribution
 © NGH 2023
 © OSD 2023
 © ESRI and their suppliers 2023
 © NSW Government data 2023

Ref: 21-383 Submissions and Amendment workspace
 20220523 \Development Footprint changes from EIS (EIS
 indicative layout compared to Amendment Development)



Oxley Solar Farm

Residences in area and viewpoint locations



Oxley Solar Farm – Project changes in response to public feedback

Aspect	Unit	EIS Project (Original Plans)	Amended Project (Current Plans)	Difference
Development footprint	Hectare (ha)	895	268	-70.1% reduction
Solar panel area	Hectare (ha)	269.78	195.25	-27.6% reduction
Number of panels	Panels	715,680	385,280	-46.2% reduction
Setback distance nearest residence (R5)	Metres (m)	546	615	+12.6% increase in setback distance
Setback distance Castledoyle residence (R7)	Metres (m)	739	1580	+113.8% increase in setback distance
Setback distance Castledoyle residence (R201)	Metres (m)	610	1550	+154.1% increase in setback distance
Setback distance Blue Hole picnic area	Metres (m)	475	1,285	+170.5% increase in setback distance from Blue Hole picnic area
Biodiversity impact - native vegetation	Hectare (ha)	86.8	92.78	+6.9% increase in impact area (due to reclassification of existing areas)
Biodiversity impact - Box Gum woodland	Hectare (ha)	6.67	1.68	-74.8% reduction in impact area
Biodiversity impact - Hollow bearing trees	Hectare (ha)	20	5	-75% reduction
Generation capacity	Megawatt (MW)	255	215	-15% in generation capacity



Oxley Solar Farm

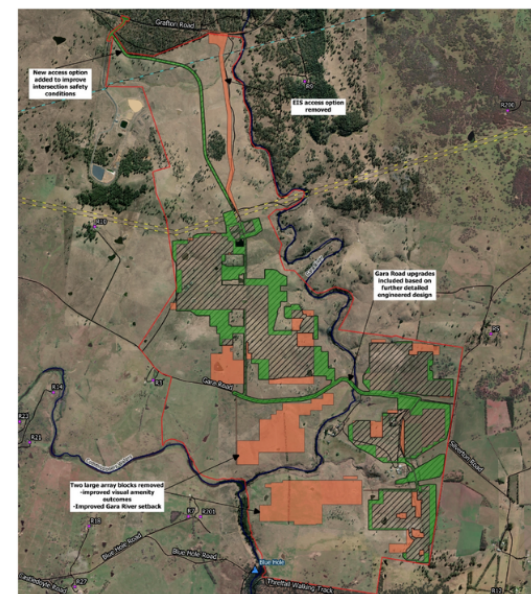
Other project changes

Site access

- Was originally via existing property access on Waterfall Way.
- Now via a new access point from the ARL access road to improve road safety

Upgrade of Gara River Causeway

- Originally would occur in the vicinity of the causeway
- Now the causeway will be raised by up to 1.3m and would include cluverts. This will improve road safety, amenity, flood immunity and enable a fish passage



Oxley Solar Farm – Response to Public Feedback

PROJECT AMENDMENTS



70% reduction
to the development
footprint



Increased setback distance
from Blue Hole picnic area



Reduced impact on native vegetation



330,400 solar panels
removed

**WE LISTENED.
WE CHANGED.**



Relocated planned site access
to improve road safety



Reduced impact on the Box Gum woodland



Increased setback distance
to nearby residences



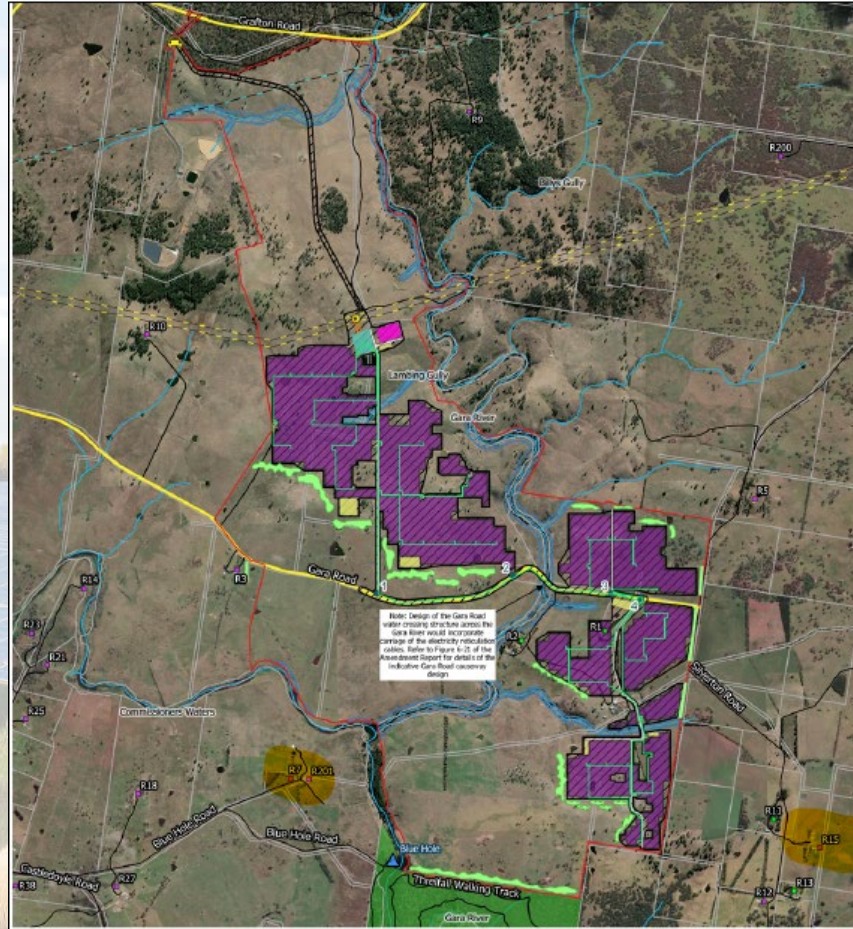
Reduced impact to hollow bearing trees



Upgrading Gara River
Causeway to improve road
safety, flood immunity
and fish passage




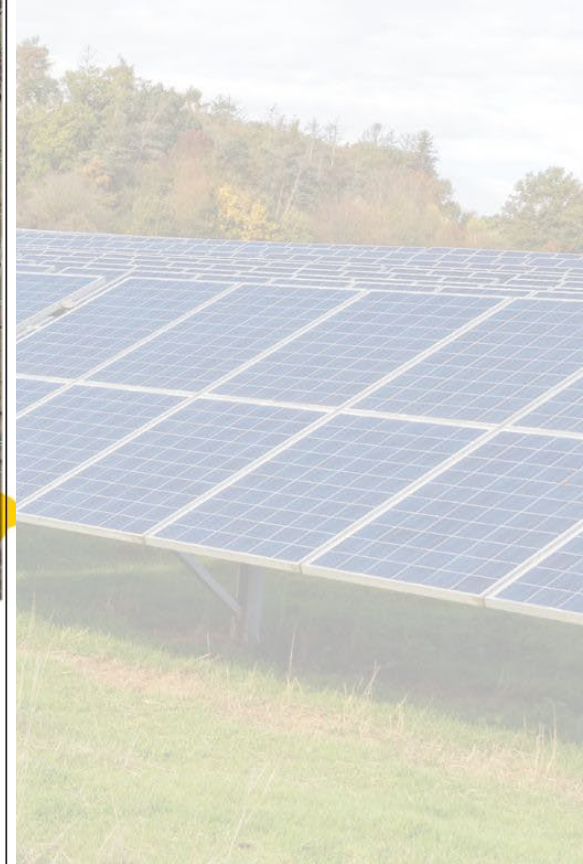
Oxley Solar Farm Proposed layout - informed by public feedback



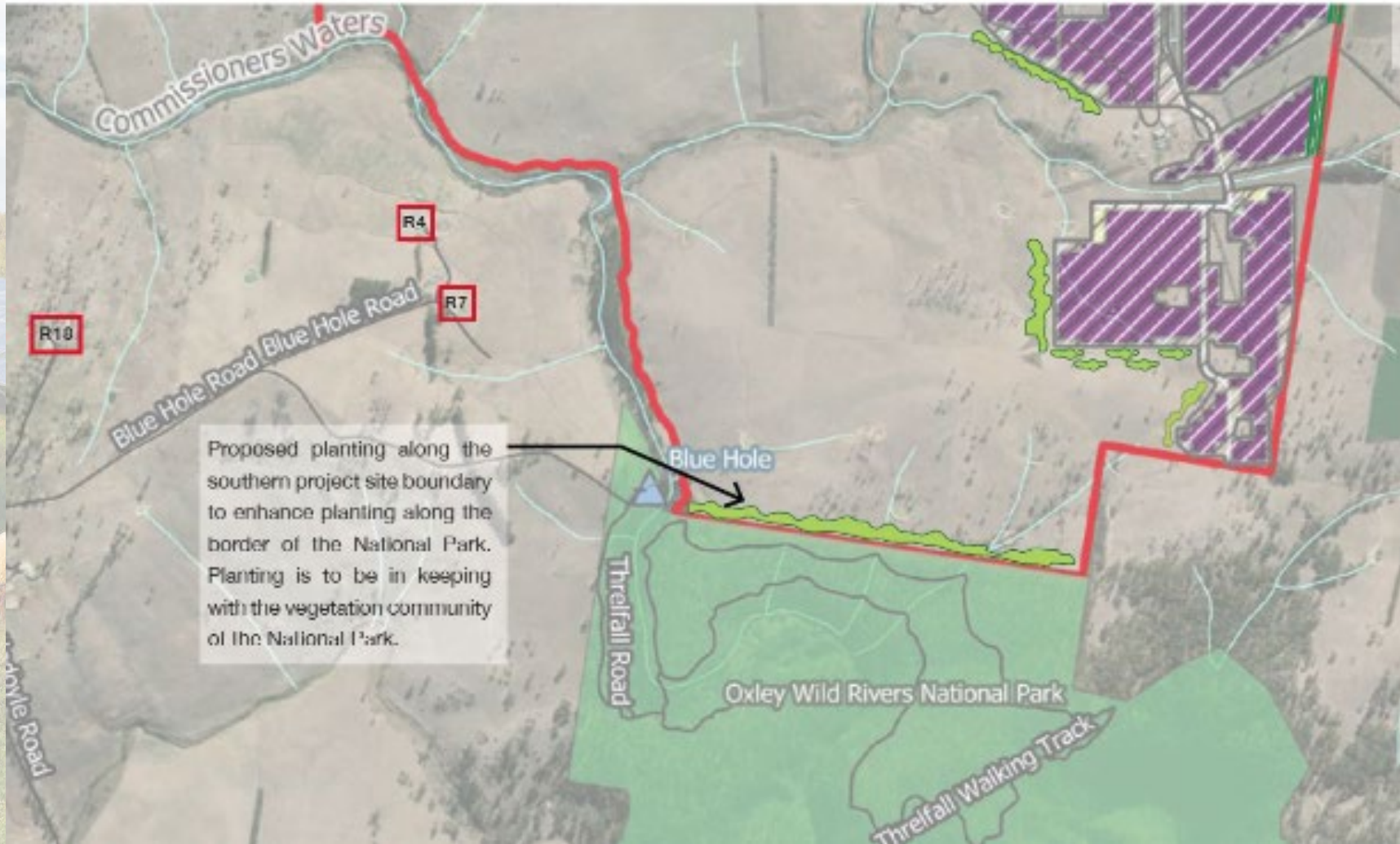
Development Footprint

Legend

<ul style="list-style-type: none"> Project Boundary Development Footprint Roads Key roads National Park Travelling Stock Reserves ▲ Blue Hole Picnic Area 	<ul style="list-style-type: none"> Infrastructure layout Array area BATTERY STORAGE CONTROL ROOM PV-PCU Shed Site road Laydown areas Solar array Substation Internal electricity reticulation cables (underground in trench within development footprint including Gara Road) Transmission line electrical connection (overhead) Transmission connection point 	<ul style="list-style-type: none"> Electricity transmission lines 132kV 66kV Associated residences Non-associated residences Vegetation screening Site access ● Gara Road access points Waterway buffers Waterway >1st order (strahter) 	<p>Data Attribution © NGH 2023 © OSRI and their suppliers 2023 © NSW Government data 2023</p> <p>Ref: 21-393 Submissions and Amendment workspace 20220523 1 Development Footprint Author: Kyle M Date created: 18.09.2023 Datum: GDA94 / MGA zone 56</p> 
---	--	---	--



National Park Northern Boundary – project setback & screening



Typical screen planting

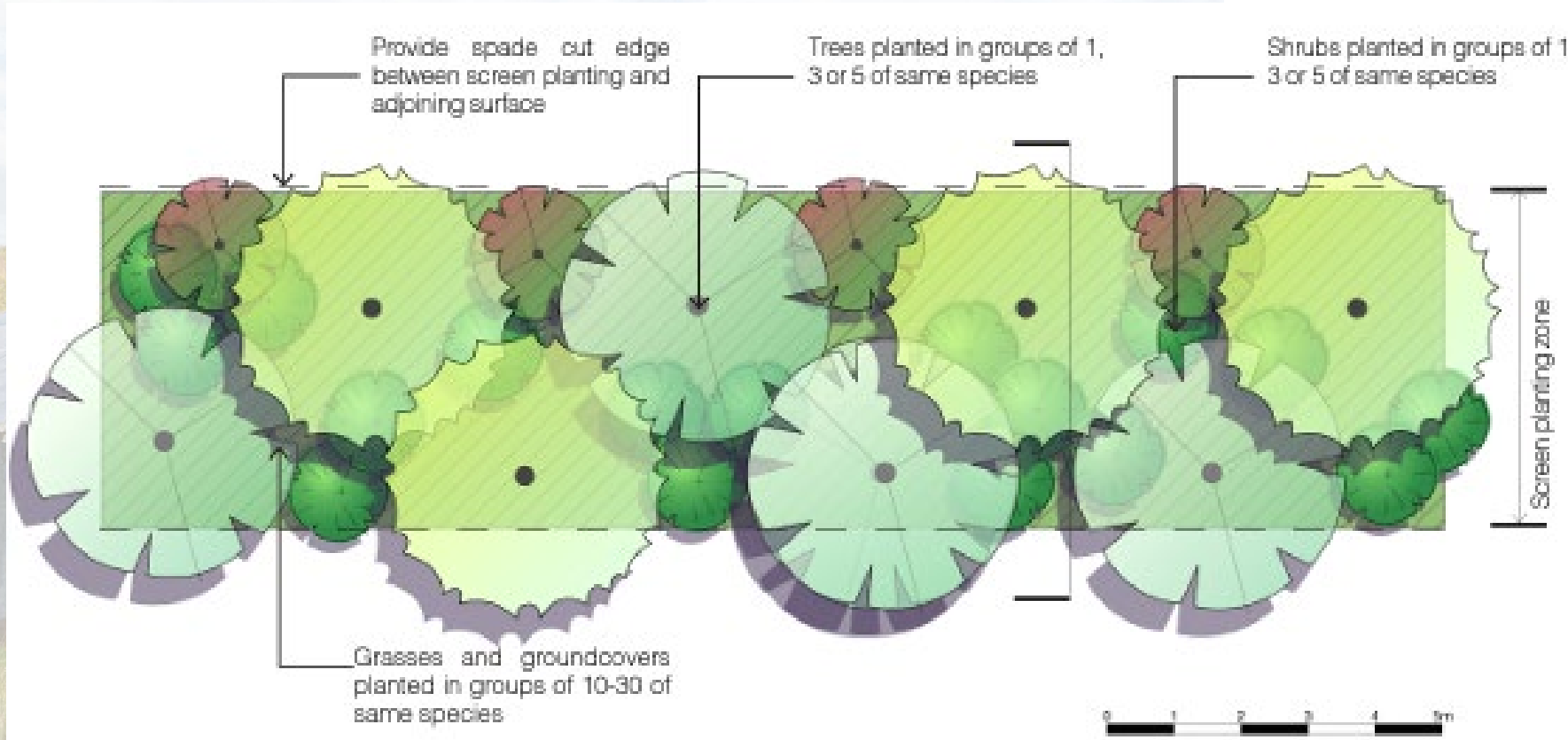


Figure 9 Typical On-Site Screen Planting

Image from Threlfall walking track
at northern edge of National Park -
looking north east





Land & soil
capability -
Largely
moderate/low or
low



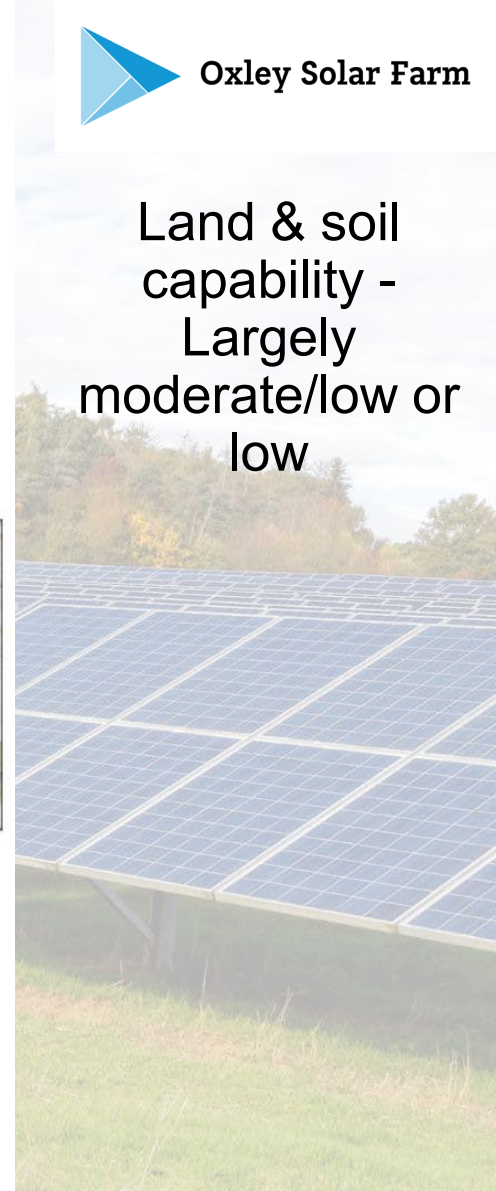
- Legend**
- Proposal Site
 - Land and Soil Capability NSW
 - 3 - High Capability Land
 - 4 - Moderate Capability Land
 - 5 - Moderate - Low Capability Land
 - 6 - Low Capability Land
 - 7 - Very Low Capability Land
 - 8 - Extremely Low Capability Land

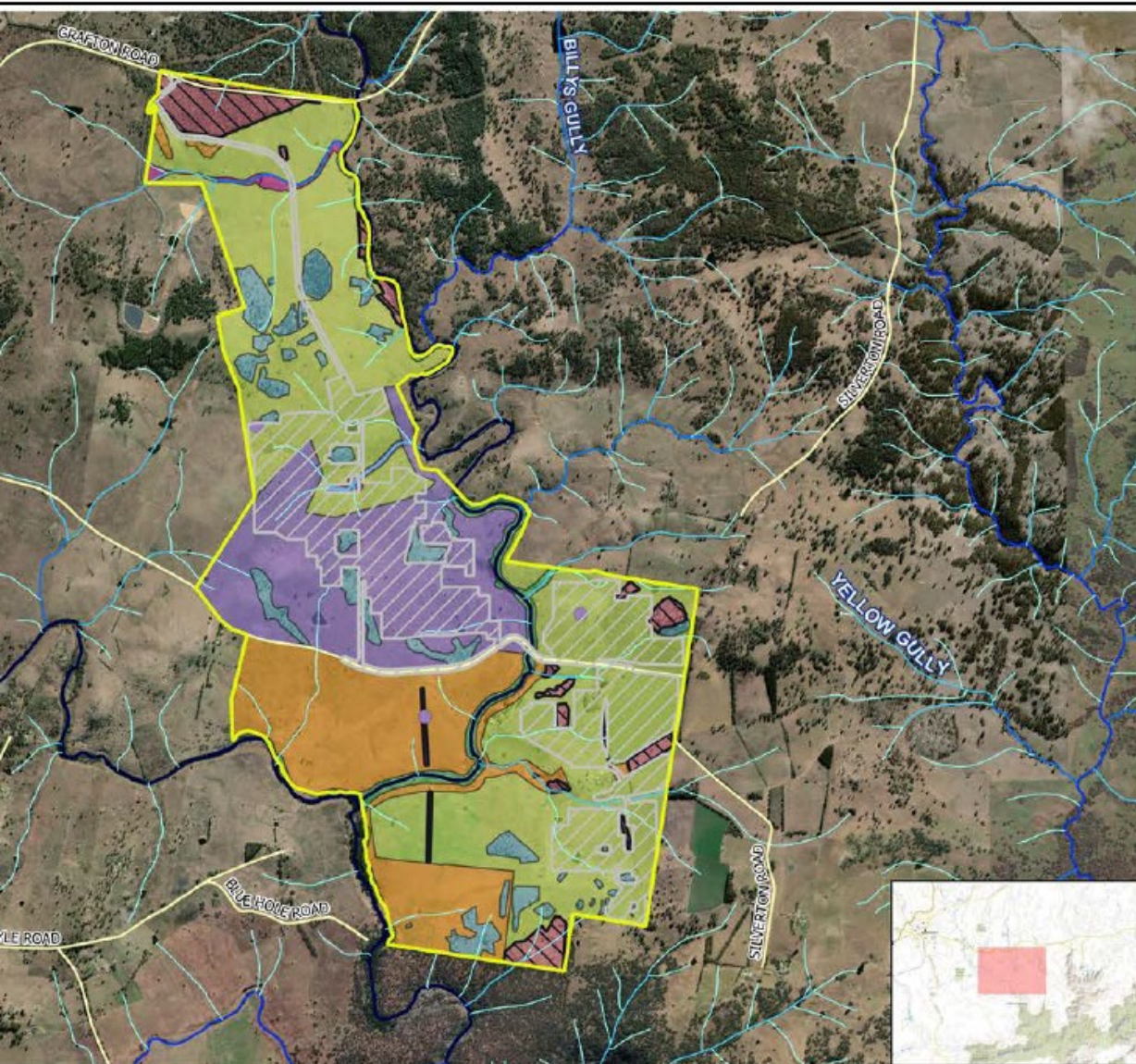


Date Attribution
© NGH 2020
© [Oxley Solar Development](2020)
© [Basemap] Courtesy NSW LPI, ESRI and their data suppliers (2020)
Ref: 19-489 Oxley Solar Farm EIS \ Land and Soil Capability
Author: Vitely K
Date created: 14.10.2020
Datum: GDA84 / MGA zone 56



NGH






**Oxley Solar Farm BDAR Update
Figure 3-2 PCTs and TECs in the
Project Boundary**

Legend

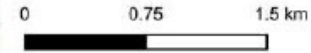
-  Project Boundary
-  Development Footprint
-  Roads
- Strahler Stream Order**
-  1st Order Stream
-  2nd Order Stream
- Strahler Stream Order
(Key Fish Habitat)**
-  3rd Order Stream
-  4th Order Stream
-  >5th Order Stream

 White Box Woodland TEC

PCTs

-  510 DNG
-  510 WD
-  567 DNG
-  567 WD
-  84 Riparian
-  84 Sedgeland
-  Non-Native Cat 1

IBRA Region: New England Tablelands
IBRA Subregion: Armidale Plateau



Data Attribution

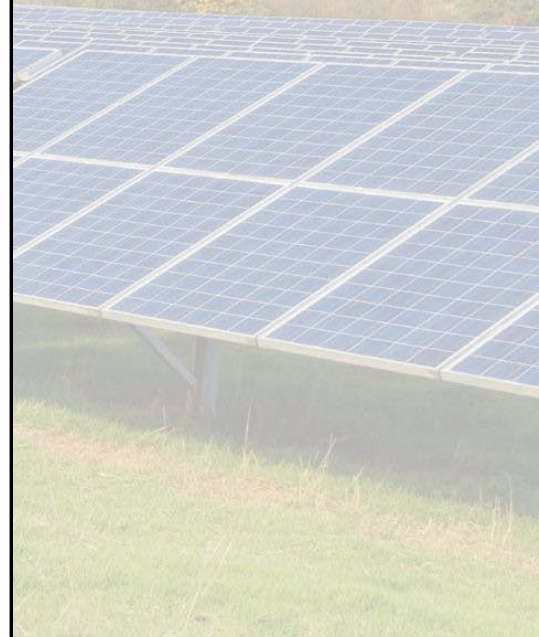
- © NGH 2023
- © [Oxley Solar Development][2022]
- © [Basemaps Courtesy NSW LPI, ESRI and their data suppliers [2022]

Ref: 21-393 Oxley Solar Farm BDAR Update
Figure 3-2 PCTs and TECs in the Project
Boundary

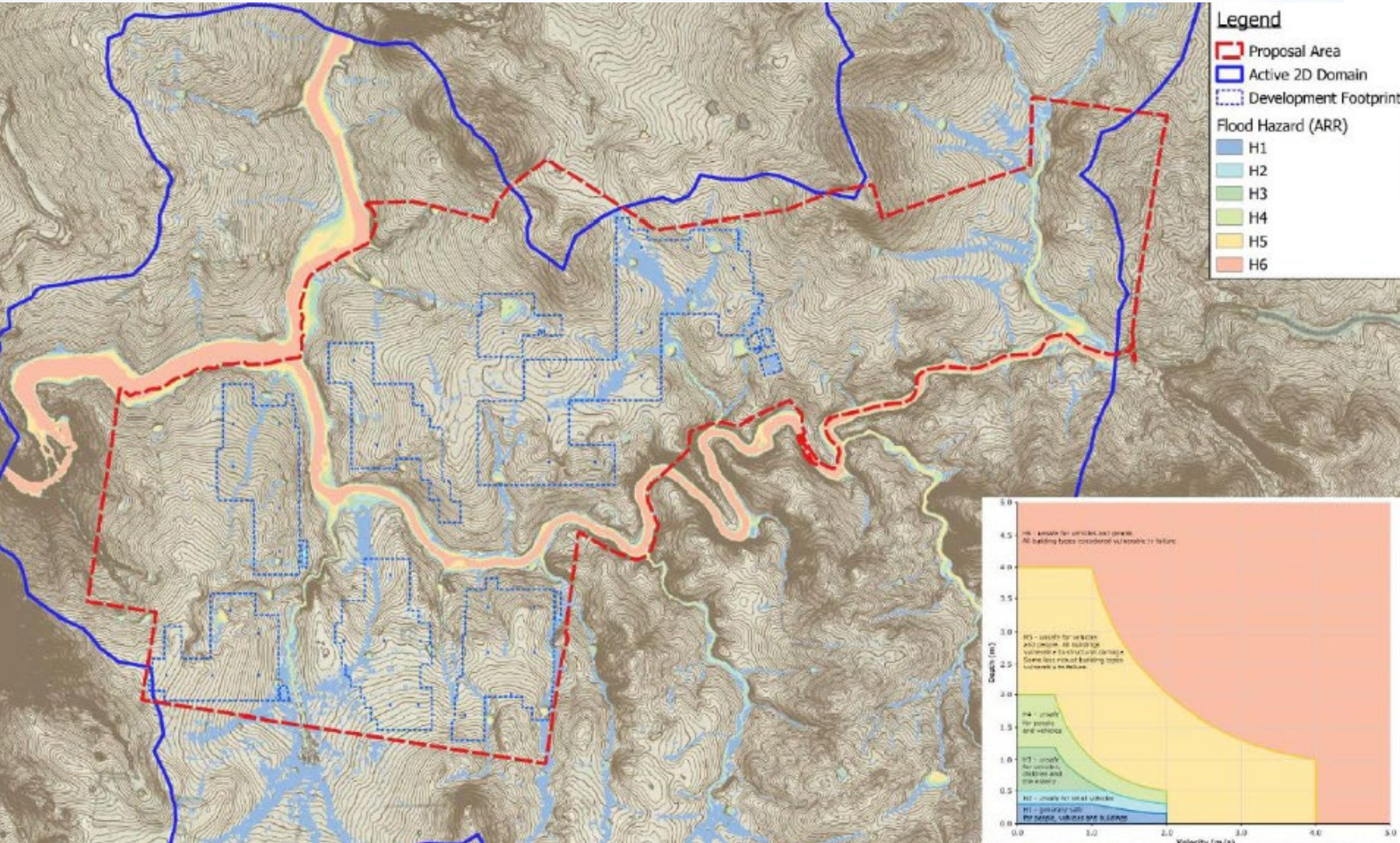
Author: C. Vincent
Date created: 07.09.2023
Datum: GDA94 / MGA zone 56



Focus on reducing
environmental
impacts



Waterways and flood analysis – no adverse impacts



Thank You

