

From: [REDACTED]
To: [Kym Statham; IPCN Enquiries Mailbox](#)
Subject: PDF Photos - Jindera Solar Hearing
Date: Thursday, 26 November 2020 4:09:01 PM
Attachments: [Solar Photos - Final.pdf](#)

Dear IPCN,

From
[REDACTED] (please do not publish my name or contact details.)

Kind regards,

Our family encounter with smashed PV Solar panels from tennis ball sized hail - 31 Oct 2020







7
NEWS



Tree hollow from cleared, century old, "hollow bearing trees" - original habitat for vulnerable species - superb parrots and squirrel gliders - "retained on site in a suitable location" according to Bomen Solar. How is this suitable for vulnerable species?

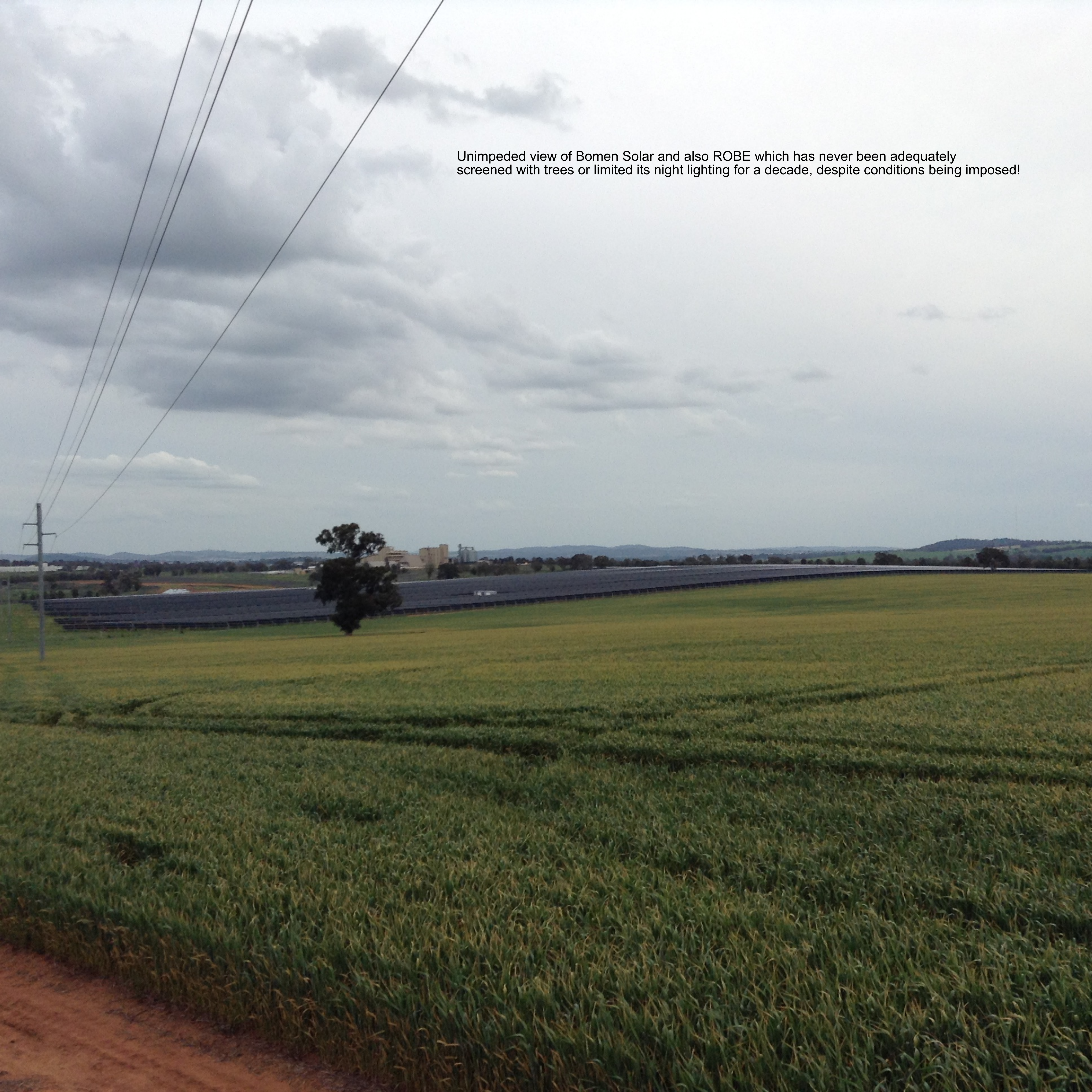
Our Obnoxious, Unscreened, Southerly Bomen Solar View. It's a glaring nightmare!







Unimpeded view of Bomen Solar and also ROBE which has never been adequately screened with trees or limited its night lighting for a decade, despite conditions being imposed!



Our easterly view of Bomen Solar.
Where's the conditional tree screening?



Bomen Solar's absent tree screen buffer.



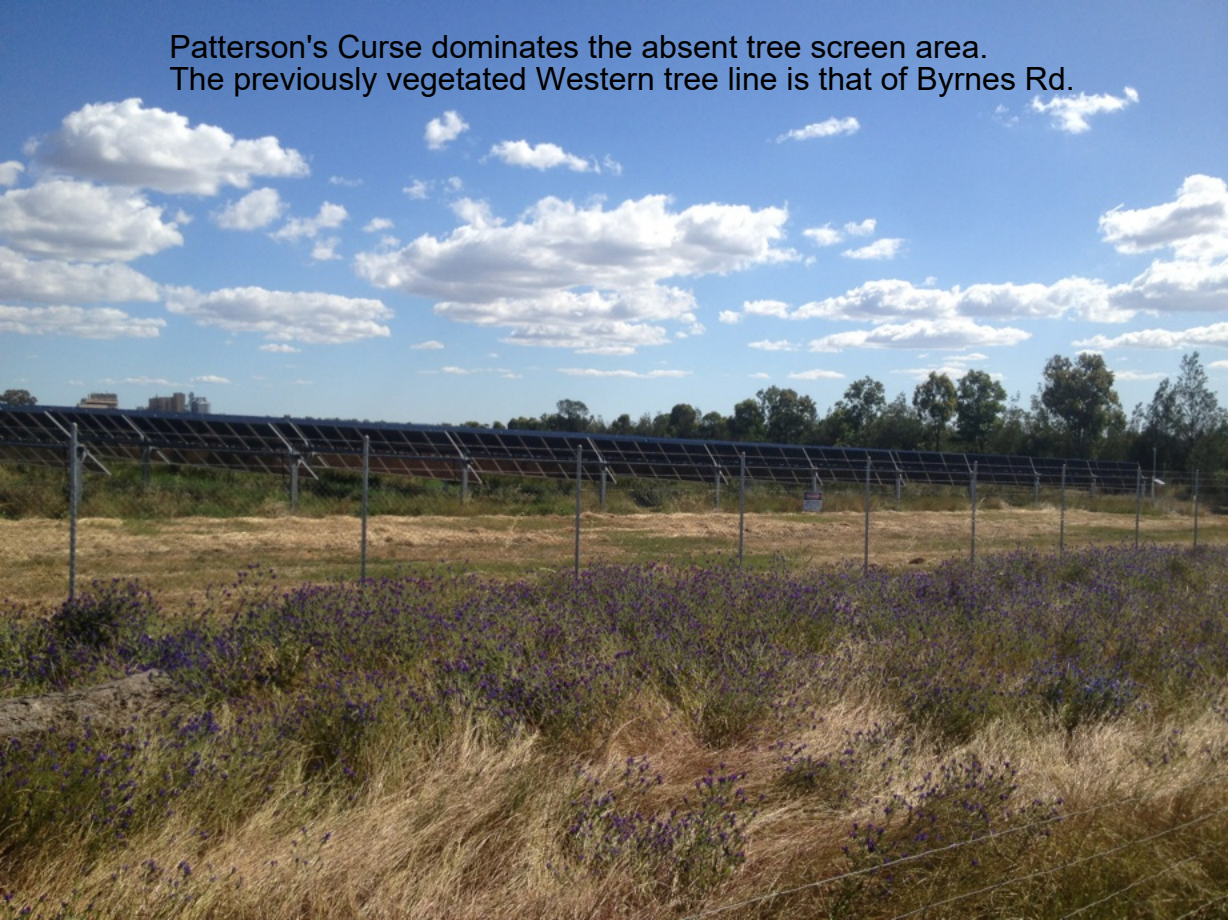
The tree screen area consists predominantly of substantial weed growth rather than trees.



One tiny tree in white tree guard - planted mid 2019.



Patterson's Curse dominates the absent tree screen area.
The previously vegetated Western tree line is that of Byrnes Rd.



The tree zone's dense haven of weeds constantly infects the neighbour's land.



The tree buffer zone consists predominantly of pattersons curse/salvation jane & other weeds. Mowing around panels only begins after high weed growth touches the panels.




The same hollow log as photographed prior to construction - placed in the absent tree screen area. Originating from one of many felled century old trees - habitat for vulnerable superb parrots & squirrel gliders - now "retained in the landscape."



From: [REDACTED]
To: [Kym Statham: IPCN Enquiries Mailbox](#)
Subject: Jindera Solar Submission - Lazard's 100% Fudged Renewable Energy Costings Comparison
Date: Thursday, 26 November 2020 4:29:10 PM

From [REDACTED]

Lazard's Fudged Energy Costings Comparison

 ENVIRONMENTAL CLEAN
TECHNOLOGIES LIMITED

HOME ABOUT ECT NEWS & INVESTOR RELATIONS TECHNOLOGIES SALES

CONTACT

Type to search, then press enter

Energy and resource security are therefore paramount to achieving economic security which in turn allows a society to afford to fund the research and development of innovative new power generation technologies that can lead to lower emissions.

At present, wind and solar remain uncommercial in most parts of the world, unable to provide reliable electricity on their own. The cost of back up and storage measures to fill the gap in electricity generation when the wind doesn't blow and the sun doesn't shine makes wind and solar unaffordable.

How can this be, given recent electricity generation cost analysis by energy consultants Lazards shows the cost of new wind generation at USD28-54 per MWh, compared to new coal at USD66-152 per MWh?

Renewable Energy

Commercial

Solar PV—Rooftop Residential	\$181	\$181	\$181
Solar PV—Rooftop C&I	\$73	\$154	\$154
Solar PV—Community	\$81	\$140	\$140
Solar PV—Crystalline Utility Scale ¹	\$26	\$40	\$40
Solar PV—Thin Film Utility Scale ¹	\$32	\$40	\$40
Solar Thermal Tower with Storage	\$126	\$156	\$156
Geothermal	\$80	\$113	\$113
Wind	\$28	\$54	\$54
Gas Peaking ²	\$183	\$183	\$183
Nuclear ³	\$118	\$192	\$192
Coal ⁴	\$66	\$152	\$152
Gas Combined Cycle ⁵	\$66	\$66	\$66

Simply, the 'levelised cost of electricity' only includes capital costs, operating and maintenance costs and fuel cost, but excludes the significant costs associated with increased penetration of variable renewables, including backup, storage, network upgrades, integration, and transmission.

...in 2015 early this year found the Hunter region faces 5,000 job losses if coal use contracts globally and no action is taken.

This inquiry appears to have its roots back in March this year, when Mr. Greenwich, Lake Macquarie MP Greg Piper and Independent member for Wagga Wagga Dr. Joe McGirr wrote to the NSW Premier and Opposition Leader regarding a **transition plan** and calling for all major parties to commit to a 10-year adjustment strategy for coal mining communities

"In a post carbon economy, there are great opportunities for regional communities like the Hunter including agriculture and wine, tourism and renewable energy," they stated. "These diverse industries boost job creation while better preserving local soil, air quality, water and biodiversity."

GET THE SOLARQUOTES
WEEKLY NEWSLETTER

First Name

SUBSCRIBE

'Catastrophic' climate change

Prior to the March election, Mr Greenwich – along with fellow independent MPs Greg Piper and Joe McGirr – called on Premier Gladys Berejiklian to develop a 10-year plan for coal-mining communities if the government was "serious about saving the world from catastrophic climate change".

Mr Greenwich said post her election win, the premier "indicated she was open" to the inquiry after the three MPs offered to provide support for the government in Parliament if required.

He said he hopes the probe will draw submissions from all sectors of the communities, including "champions within the government" for taking action to prepare for a lower carbon-intensive economy.

