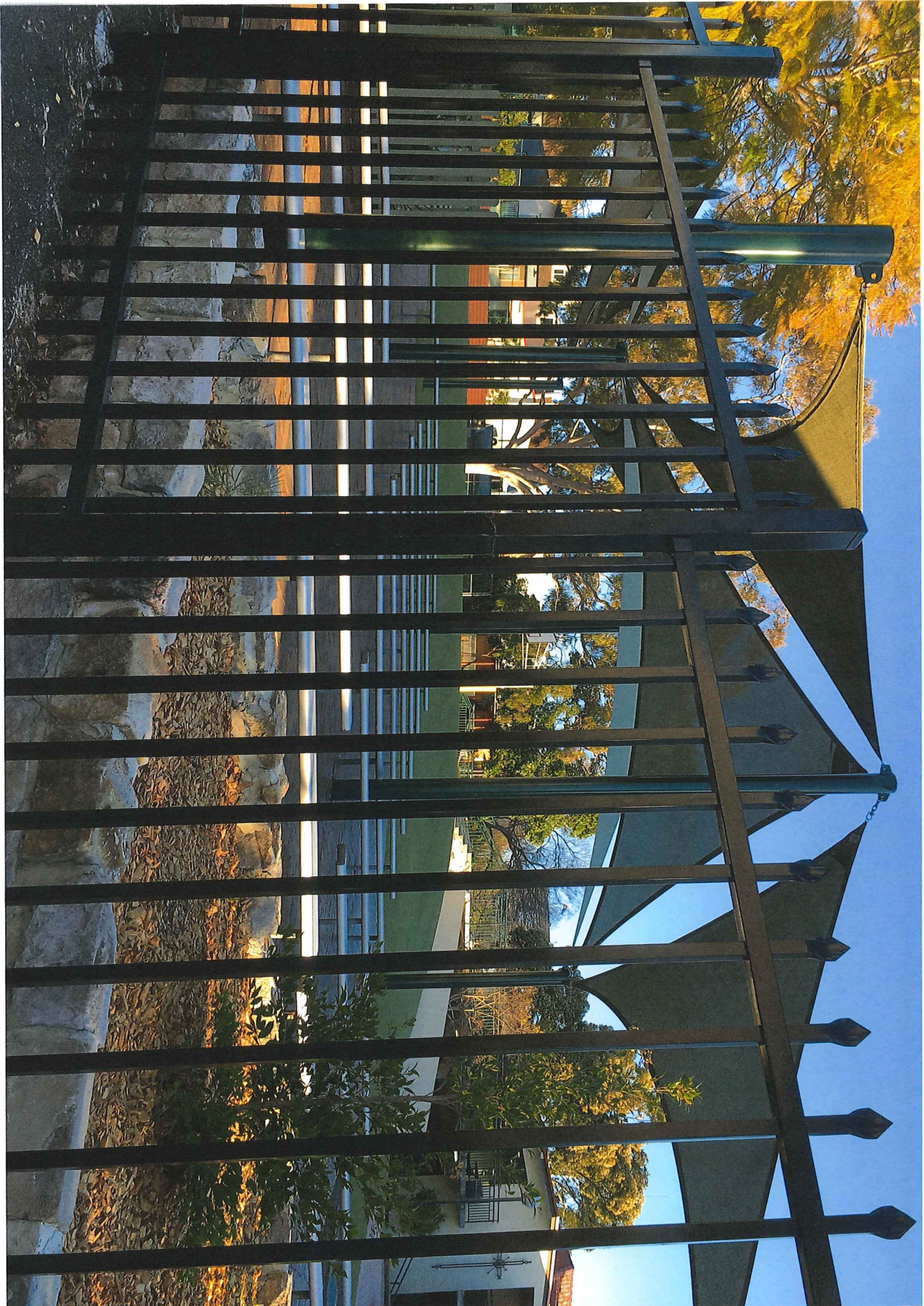




(6) Basketball ct. used by 21<sup>st</sup> May 2018 for **TRADIES** Renos.





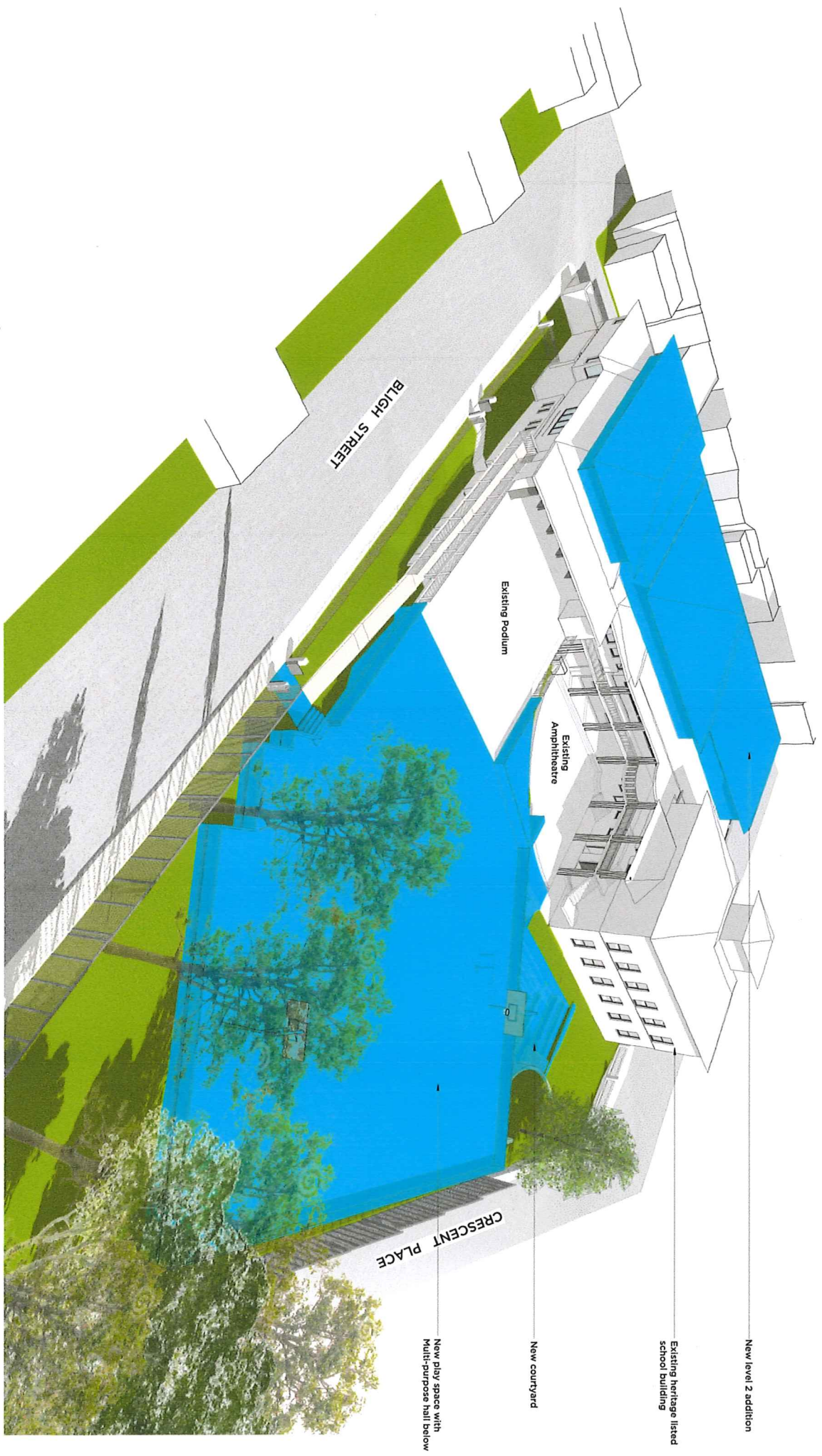


**ST ALOYSIUS' COLLEGE**  
A Jesuit School for Boys

# Burton St



**Plan Magis**  
seeking excellence in learning



New level 2 addition

Existing heritage listed school building

New courtyard

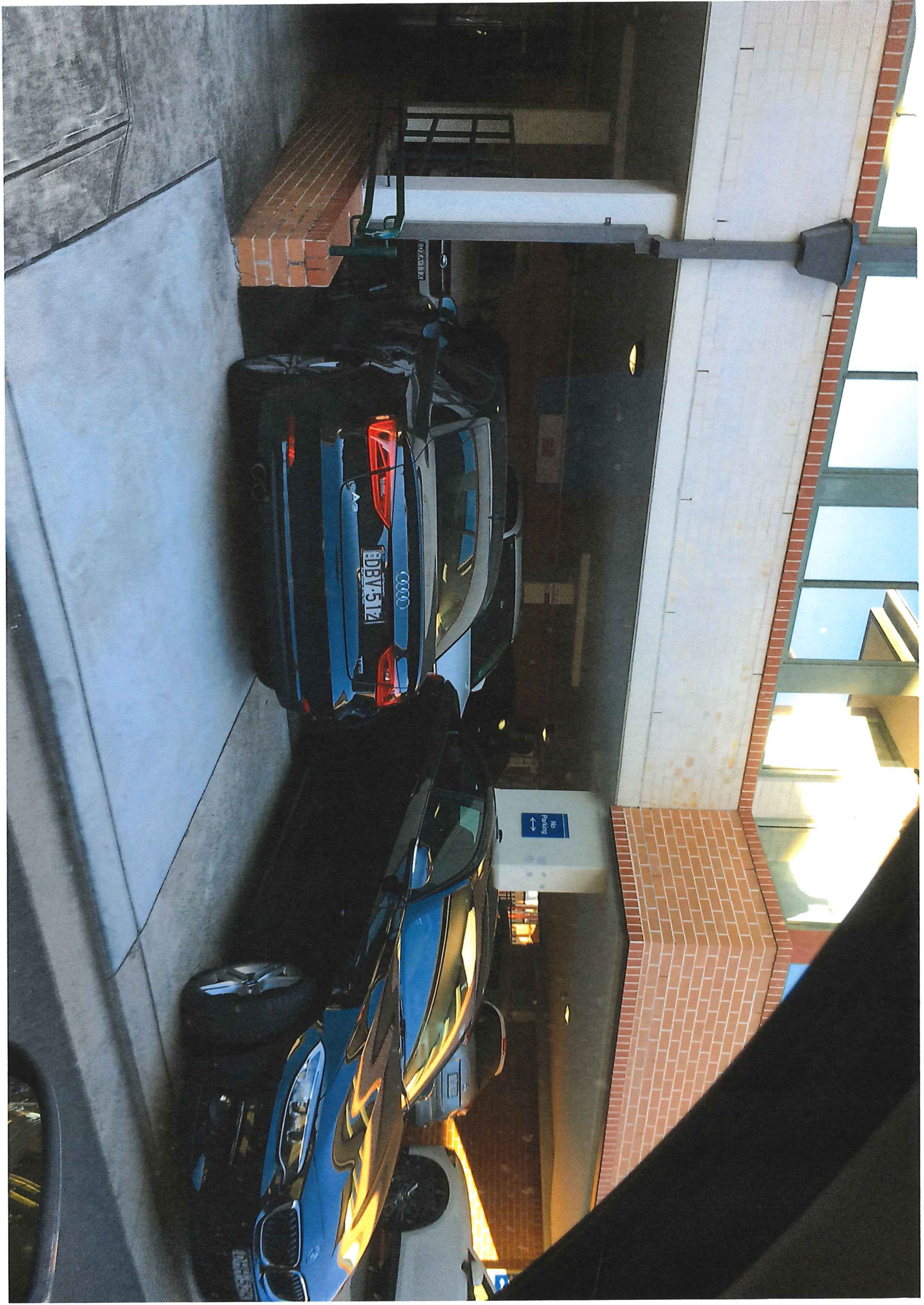
New play space with Multi-purpose hall below

BLIGH STREET

CRESCENT PLACE

Existing Podium

Existing Amphitheatre



**CHAL**  
• DEMOLITION • EXCAVATION  
*2A Double Bougie Truob  
up Broughton St.*







Reminders  
2 weeks Get Her  
-MUSIC ON TUESDAY  
+ add in other great music!





TRADIES  
PARKING 20+ cars  
DURING  
School holidays

=> Will Not Be

Accessible

after New Sports

area - 6 steps higher

21<sup>st</sup> May 2018



NO ENTRY

ONE WAY





DRY CLEAN-20



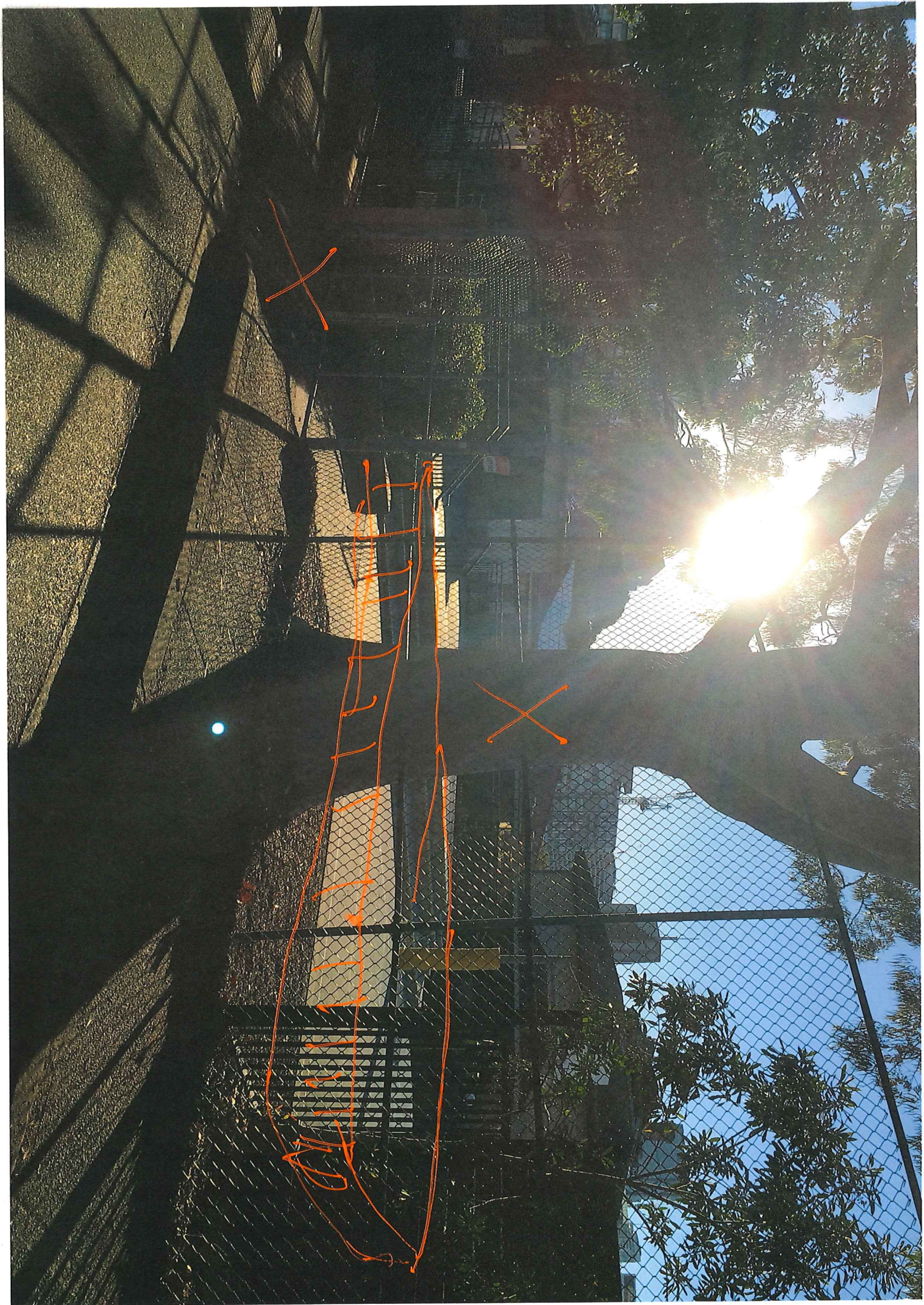
~~Risk pt.~~

Surveying is higher pt.

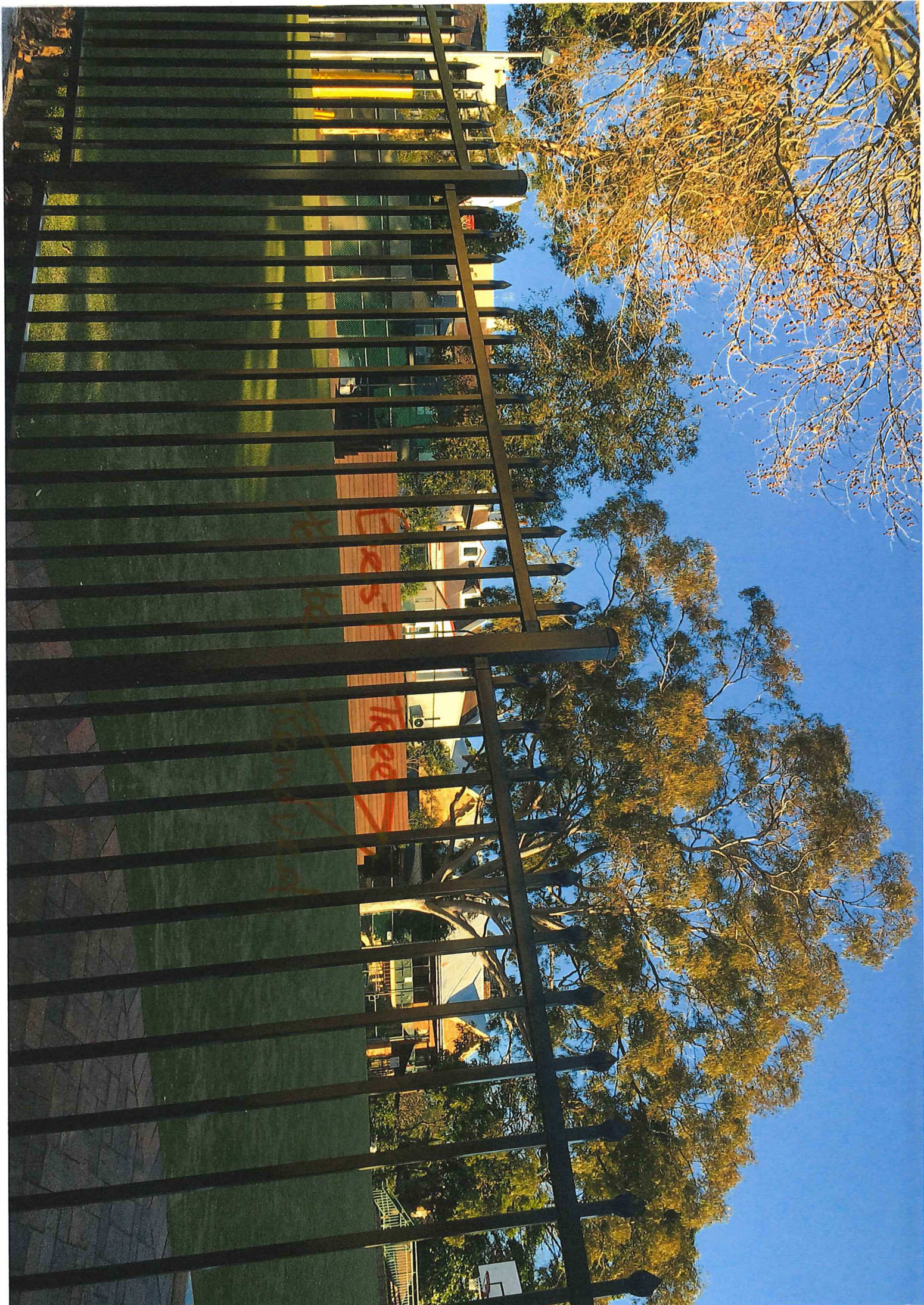
- Wrong!

ONE WAY

University

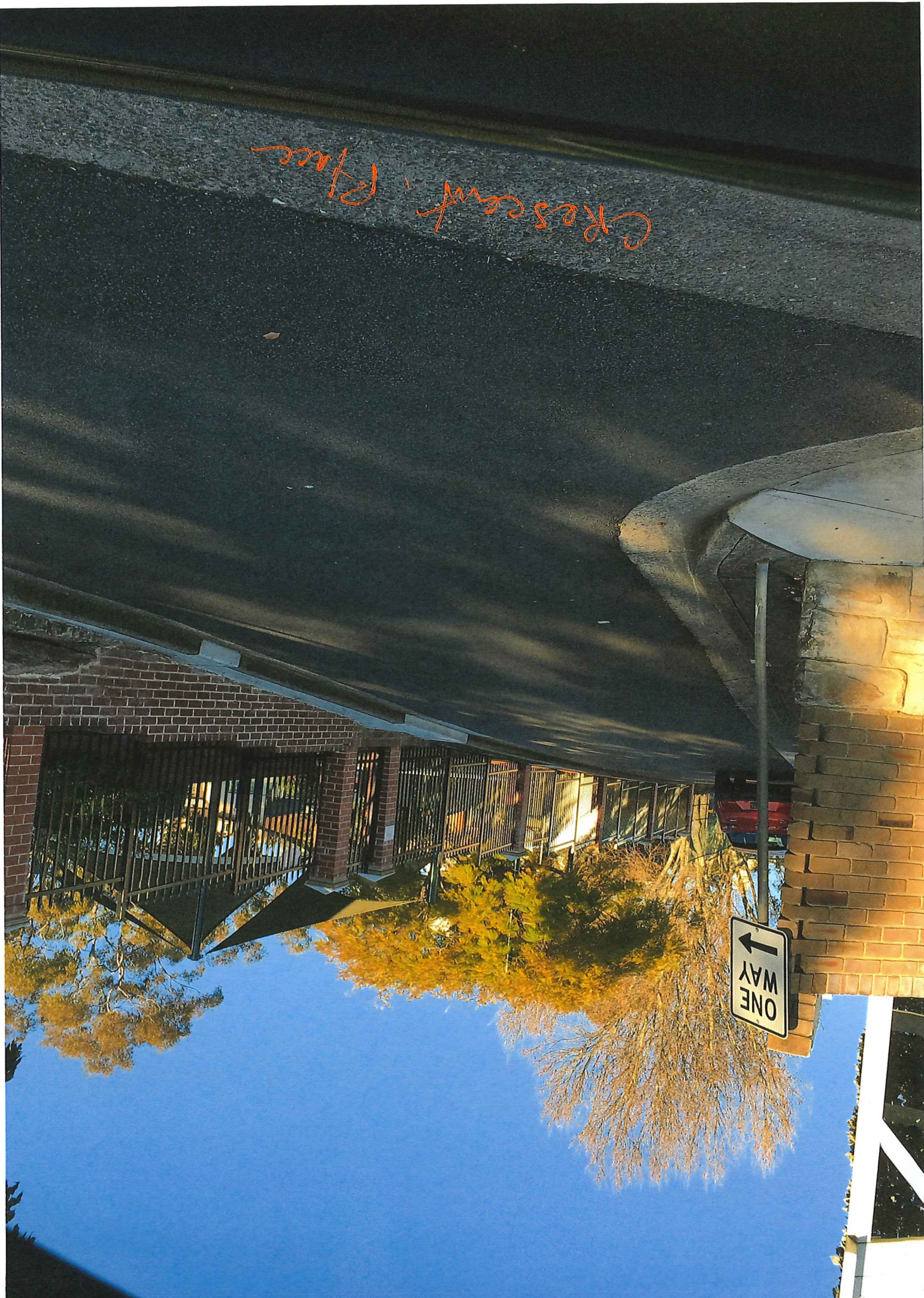






Crescent Place

ONE WAY  
←



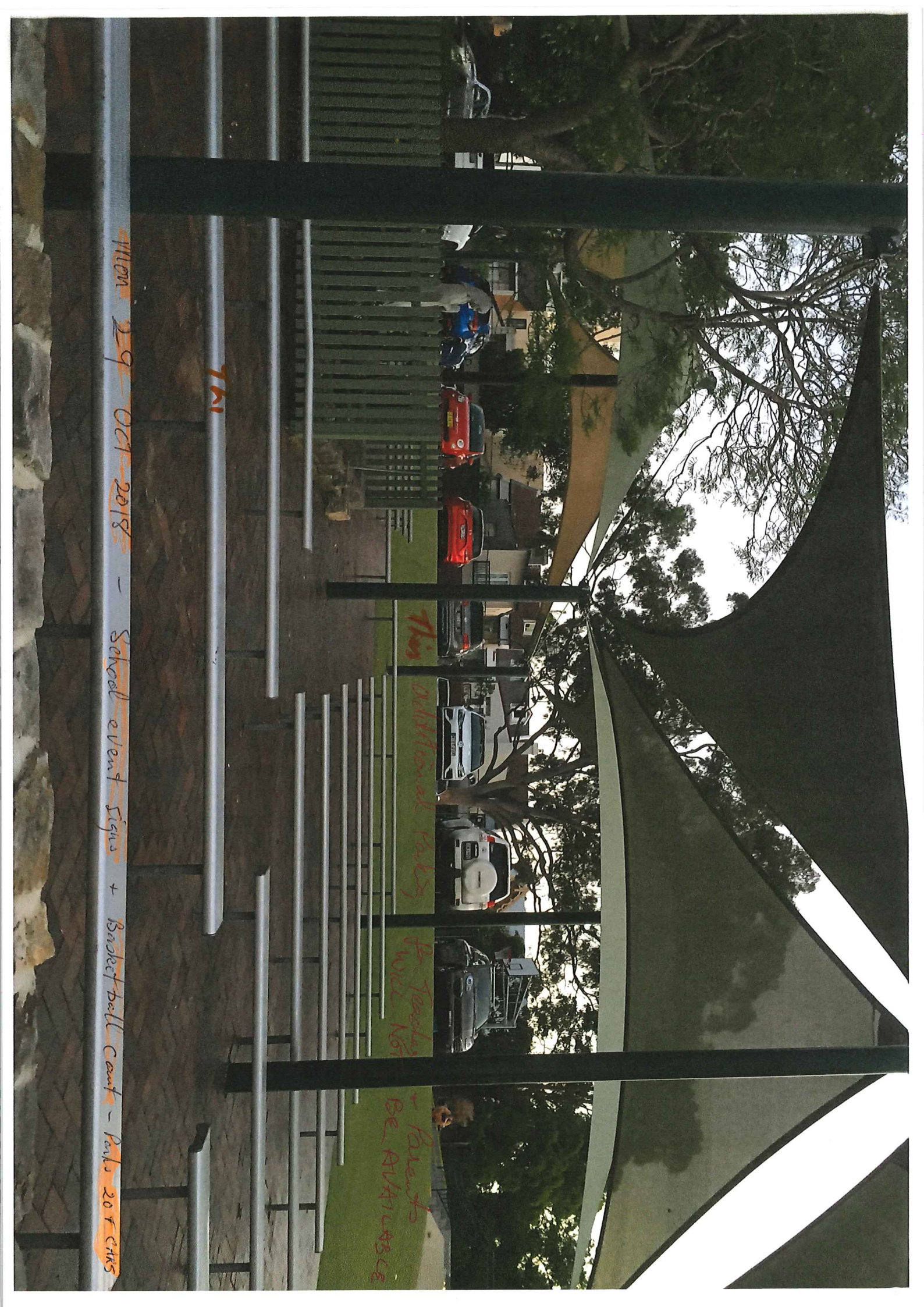
Mon 29 Oct 2018 - School event Signis + Basketball Court - Park 20 + 5ms

7M

This additional help

for Teachers  
to use for

Parents  
BE AVAILABLE







**ST ALOYSIUS' COLLEGE**  
A Jesuit School for Boys

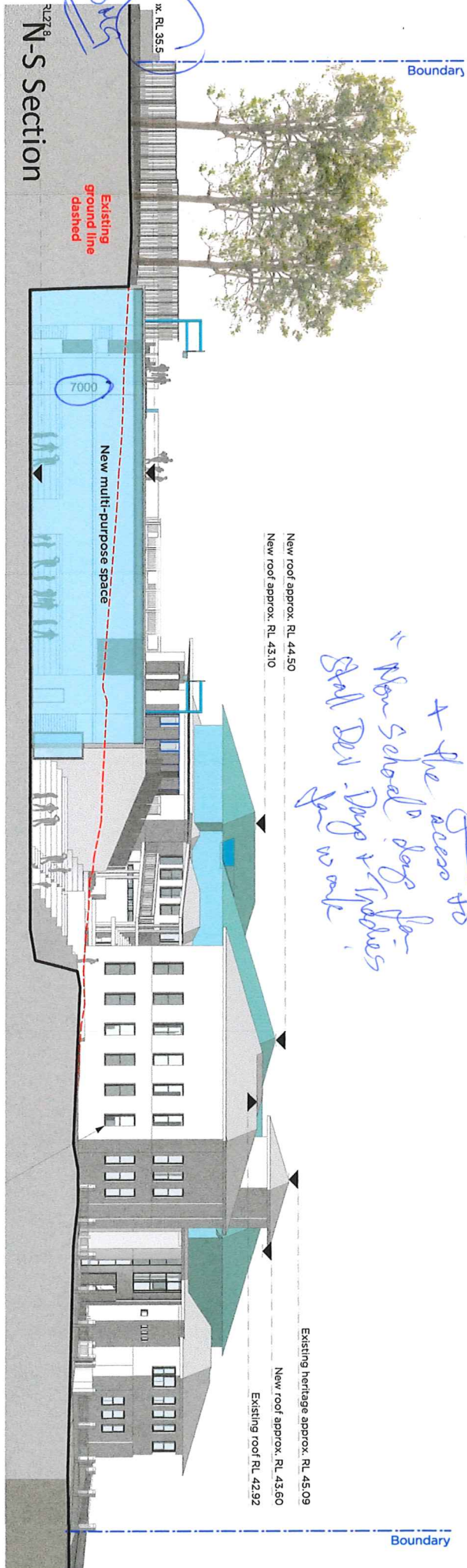
# Burton St



**Plan Magis**  
seeking excellence in learning



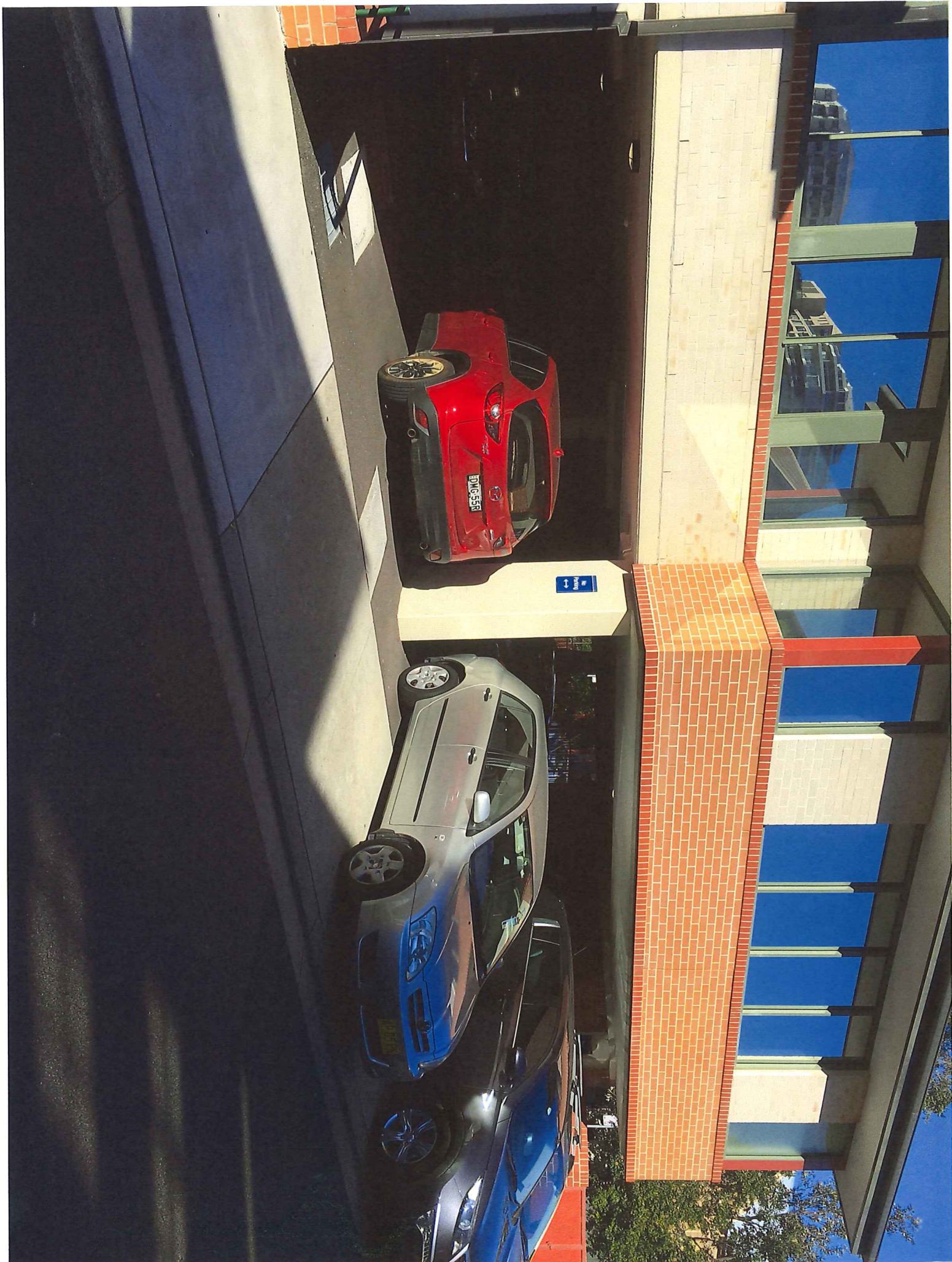
## Bligh St Elevation





12 Cars School

Park onto Post Road.



There 12 Cars and their room were 3 more Car could park

21<sup>st</sup> May 2018

Current parking for 12-17 Teachers - Not owned  
to meet minimum parking ratios - by school.  
- could change ownership



Senior School Parking  
= 12 spaces

CLEARANCE 2.220m

