

The mine includes 2 underground mining domains (Ulan No.3 and Ulan West), a small open-cut pit, a coal handling and preparation plant, stockpiling and rail loading facilities. The current mine layout is shown in Figure 2. Coal is transported by rail from the mine to the Port of Newcastle for export, and to domestic power generation markets.

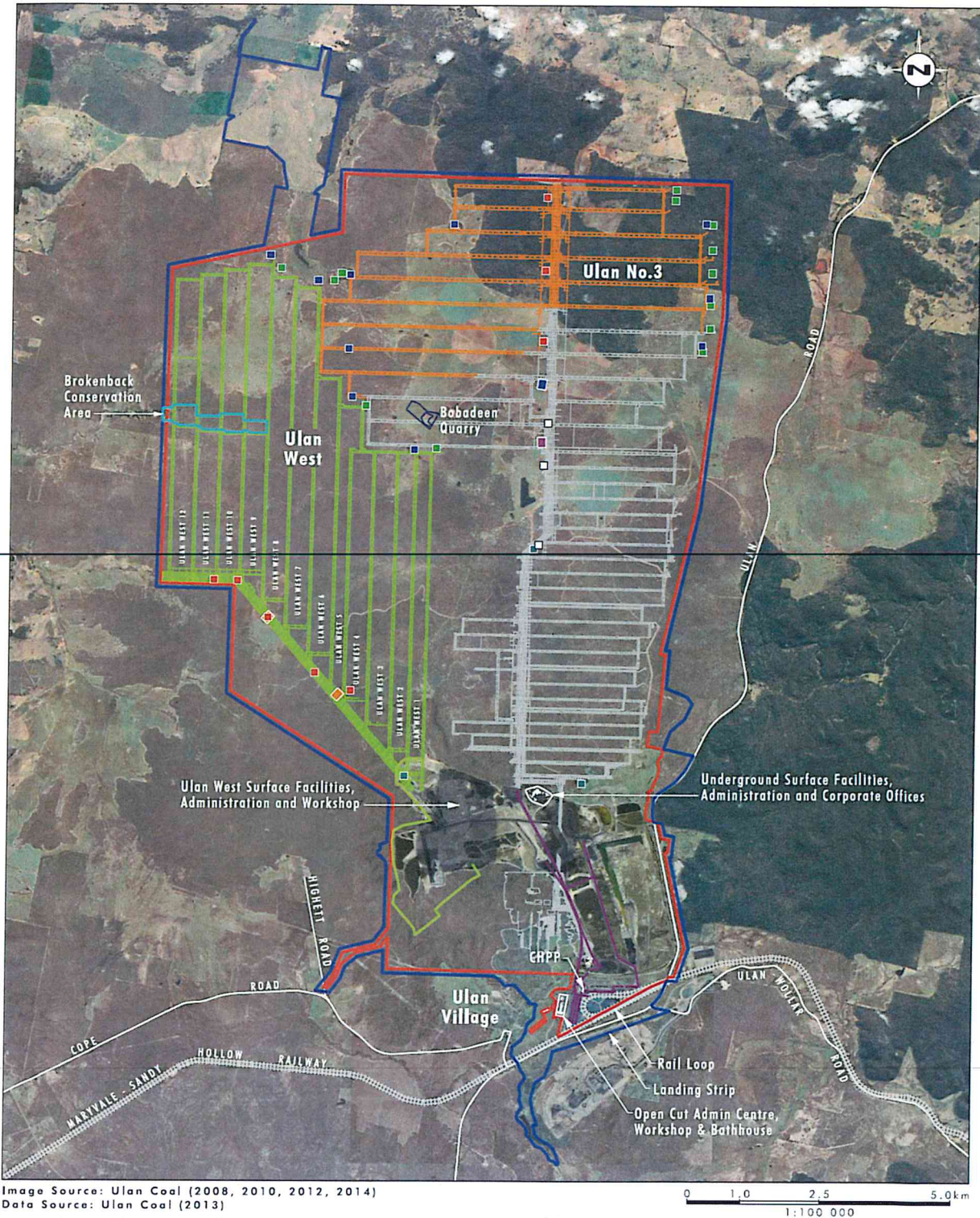


Image Source: Ulan Coal (2008, 2010, 2012, 2014)
 Data Source: Ulan Coal (2013)

Legend

- | | | |
|--|---|---|
| Existing Colliery Holding Boundary | UCML Continued Operations Project Approval Area | Conveyors |
| Approved Open Cut Extension | Approved Upcast Ventilation Shaft | Approved Downcast Ventilation Shaft |
| Approved Brokenback Conservation Area | Approved Service Borehole Facility | Approved Man Riding Shaft |
| Babadeen Quarry | Approved Dewatering Bore | Existing Ventilation Shaft |
| Approved Ulan West Mine Plan | Approved Ulan No.3 Underground Mine Plan | Existing Service Borehole |
| Previous Underground Mining Operations | | |

Figure 2: Mine Layout

FIGURE 2.1
Approved Ulan Complex Operations