

Objection to Modification SSD 5066 Mod. 1 Moorebank Precinct West

Sharyn Cullis Georges River Environmental Alliance June 2019

WE urge the IPC to reject the proposal, an approval with suggested conditions is not sufficient

- The scale of the landfill increase is a ‘new’ level of magnified and poorly assessed risk
 - Cumulative and downstream impacts are not properly considered
- An approval cannot meet obligations for Water Sensitive Urban Design and Urban Heat Island mitigation.

What are the downstream implications for the Moorebank-Milperra floodway?



Loosing potential for urban heat mitigation

Urban forests are present!

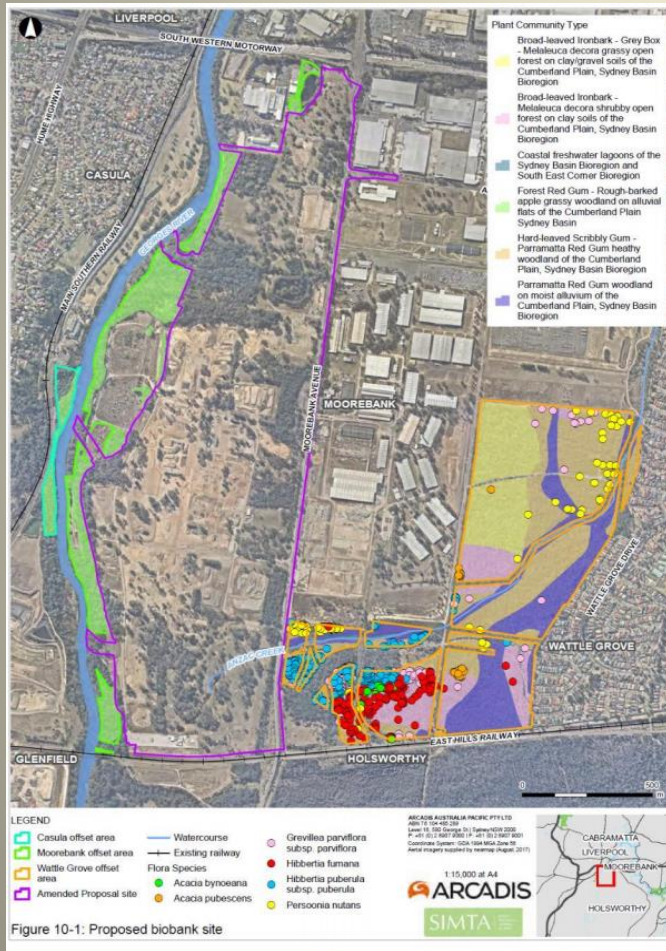


Figure 10-1: Proposed biobank site

Urban forests will go!

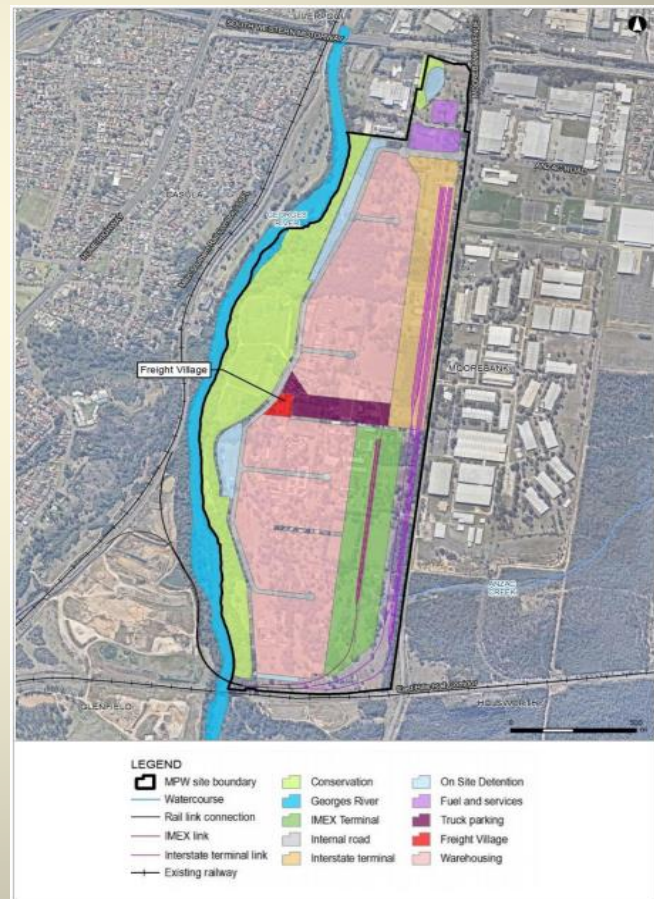


Figure 4 | Approved Layout (source: MOD RTs)

Georges River, West Precinct foreshore



Fragile banks



The incremental decline of environmental quality

Concept Plan 2013



The Proposal of 2019



A result nearby when a direct stormwater discharge into the Georges River is approved.



Here is what direct discharge outlets become over time
also nearby

