

Princess Pastoral Company PTY LTD

- Directors Peter and Cate Brooks
- We farm the land under license from Hume
- 5 children under 17 years old
- Live on site (2km from stockpile site)
- Have lived here for 3.5 years
- Intend to be part of the project for the long term.

(2)
Pet

What we do

- Grow crops to produce high value
 - Lamb – Year to date 28,900 people with lamb for 1 year
 - Cattle – 2018 - 64,000 people with beef for 1 year
 - Grain (canola, wheat, buckwheat)

Using best practice methods to best use moisture to maximise yields

The average Australian consumes of 26 kg of beef and 9 kg of lamb each year (<https://www.mla.com.au/prices-markets/market-news/know-the-numbers-state-of-the-industry-report-2018/>)

CB1

CB2

Mereworth March 2017





Belanglo Road Feb 19



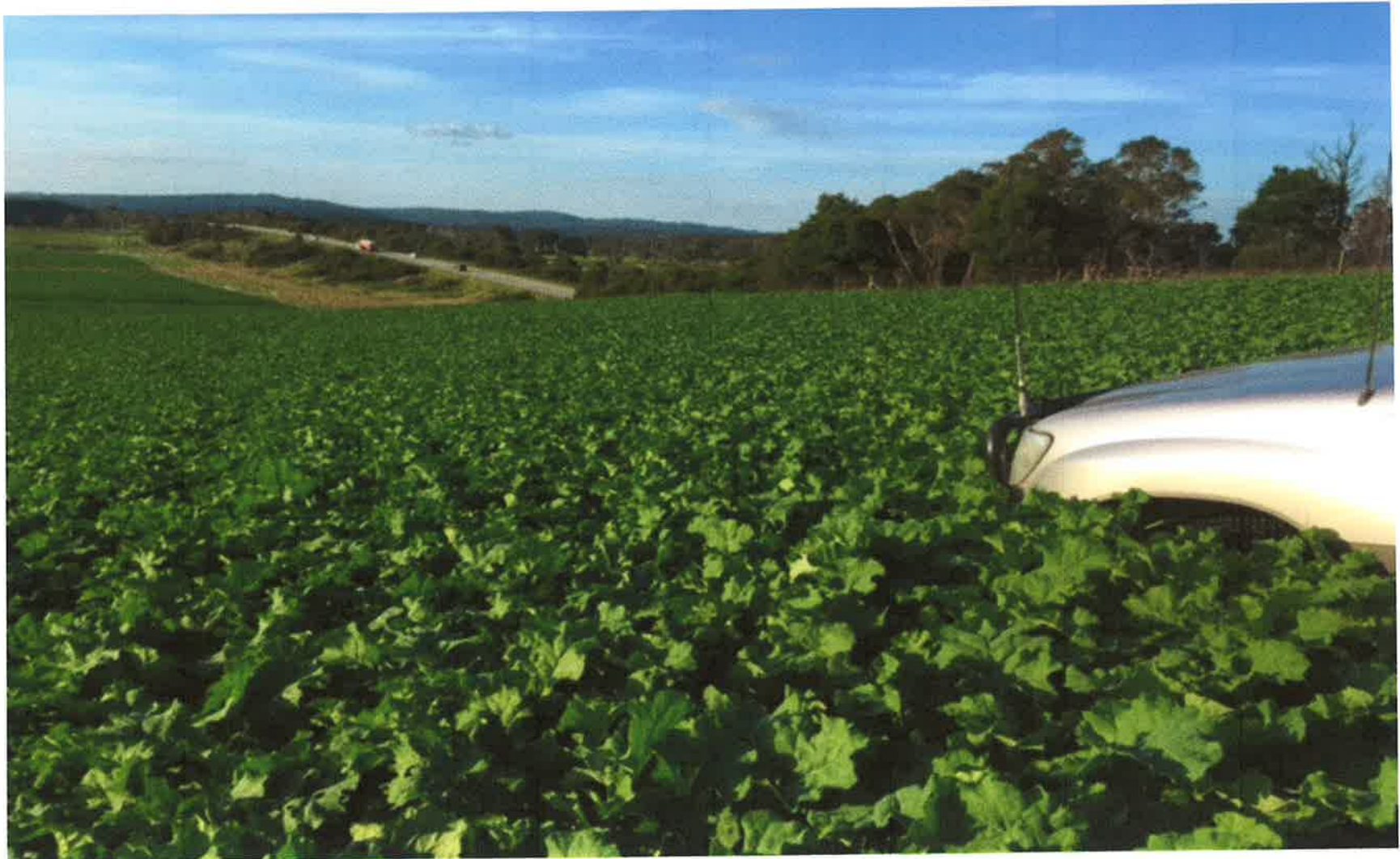
Grazing ryegrass Nov 18



Canola Feb 19 looking towards New Berrima



One Tree Hill Over looking Hume HWY



Formerly Tussock Hill



Sowing Canola Dec 18



Looking back to New Berrima



Looking towards Medway road



Heifers at Stonnington



Keeping up with Technology



How we grow the crops

- Areas are sprayed (grass and weeds killed) during summer. Saving moisture
- Crops generally sown between February and March each year.
- Large rates of fertilizer used (usually 300kg per ha)
- Lime used to correct pH.
- Professional agronomist and our experience used to ensure crop health.
- Crop plans are reassessed each month.
- Objective measurement of dry matter and quality are used to determine stocking rate.

Improvements

- 1000 Tonnes of Lime
- 12000 Cubic Meters Chicken Manure
- 6 km of New Boundary fence
- 40 km of dilapidated fences removed.
- 900 ha of land cleared from serrated tussock infestation.
- Soil phosphorus levels doubled to productive levels
- Soil PH restored to productive levels
- 3 New sets of cattle yards

How we will work in the mine environment

- No effects on crop or animal production due to mine operation (dust, noise etc)
- Infrastructure design allows for continuance of farm production ie animal viaducts and additional yards etc.
- The mine and the farm can operate effectively together.
- As parents and employers we have no concerns living and working within the boundaries of this project.

Water

- We do not irrigate and do not intend to irrigate.
- Livestock – surface water is adequate however we do back up with bore water to maintain quality and supply in years like this one.
- Sheep – about 4 L per day per animal
- Cattle – about 40 L per day per animal

Source DPI

Spinoff effects of the farm

- Local Carriers are used, we spent \$315,000 paid to one local family owned carrier.
- 1 full time, 2 part time employees
- Local stock agent
- Local Vets
- Local mechanics



When it used to rain

