

Jorge Van Den Brande

From: matt bingley [REDACTED]
Sent: Monday, 19 November 2018 3:29 PM
To: IPCN Enquiries Mailbox
Subject: Matthew Bingley,submission(ssd 6698 mod 1)
Attachments: mime-attachment; Copperbella Images final.pdf; Wind Farm YVWF IPC YEM letter.pdf

Matthew Bingley,
[REDACTED]
[REDACTED]
[REDACTED]
[REDACTED]

To
The Secretary
Independent Planning Commission NSW
Level 3, 201 Elizabeth Street
Sydney NSW 2000
Re Yass Valley Wind Farm Modification Assessment (SSD 6698 Mod 1)

I (Matt Bingley) was on the Coppabella Wind Farm site inspection with you (IPC) 13/11/18 and I'd like this submission to be regarding what I saw on that visit reinforcing the view that the site is too fragile to develop and the impact on Fauna devastating .

All the site visit notes mentioned below having particular relationship to the modification Assessment.

Starting at Whitfield's road
A rushed affair where
Questions asked about 4 hollow bearing logs, without much consideration for the important trees that will become hollow logs, for the endangered species in the future.
Area will be destroyed.
Highlighting the width of the road 5m with a drain .
Effort made to step out distance (why was an accurate tape not available?)
The big question was what was the maximum distance to be cleared .
Tom Neilson highlighted only the "Minimum"
Will be 5m + drain as plain to see even this minimum distance encroached on most of the trees .
Without knowing maximum distance allowed we cannot make a realistic assessment of the road widening impact on the vegetation. I looked to me that we may as well say goodbye to the critically environmental friendly Whitefields road.

On to Shaw's house, Whitefield s road we were showed a photo montage turbines hills etc by Goldwind ,
Only way I could get same picture was to put my head right on ground and look
Very misleading picture did the IPC notice this !

Moving on to the very steep drive up the fragile Coppabella's
After looking at the site all my life from the ground and from Coppabella Rd it was an eye opening trip to the top .
How exciting seeing the wild life particularly all those Eagles ,
Then how incredibly sad I felt to know people were actually proposing putting these new modified wind turbines in the Wedgetail Eagle's home ,resulting in there deaths and every other eagle that ventures that way for generations to come!

Then moving on to our main stop an area I'd describe as a plateau surrounded by large rocky cliff like structures , very steep terrain up and down .

Then had to listen to Goldwind's Tom Neilson calmly explaining where roads will go

Did you see the steep terrain where the supposed roads are to go ,

Over 200 of these near 90 meter trucks just to carry in the non recyclable blades , no just a small road " right" it cannot be a small road

Then :

,"oh we won't knock out many trees "

Look where we were remember what we drove through to get there !

The ground was so fragile one tree removed was certainly too many !

Such hard area for anything to grow!

I was in shock and felt physically ill how could this be calmly discussed.

Moving on to massive disturbance of the ground ripping in power cables.

"Oh you won't see that in a few years"

Do they take us for fools ?

Also in this area we found the noxious tussock weed and scotch thistles disturbing the ground here would increase growth and population of these plants. To control these weeds they need to be sprayed on an area as large and steep as the Coppabella we need to use aircraft spraying . However the increased height of the proposed turbines being placed there it will not be possible. How are these weeds going to be controlled?

Moving on to concrete batch plant location there'd been no talk of this on top of the hill ,
Straight away more shock all effluent will run down into valley below !

I was so distressed I had to go back and get some photos to describe what I saw .

Please review them and look back on your memories of the site visit .

I have also included a link to a video which gives a very good overview I encourage you to view it: https://youtu.be/Vxer_cpl1LA

Also read my composed work

Coppabella Reflections I've put my heart into this and hope to publish in local and national papers in the days to come .

Thank you , your independent view has never been so important in my mind .

"The hills are fragile (refer to photographic evidence)and should be the subject of reforestation/rehabilitation scheme not an expanded wind farm "

I urge you to seek answers to the questions above and as a result not approve the Modification as proposed.

Your sincerely

Matthew Bingley



Sent from my iPhone

YASS EARTH MOVERS

Hubu Pty Ltd T/A Yass Earth Movers - ABN 56 985 572 513 - ACN 001 365 831 - Licence No. 218798C

ALL TYPES OF EARTH MOVING AND MACHINERY



PO BOX 556 YASS NSW 2582

PHONE 02 6226 1466

FAX 02 6226 3437

EMAIL yassearthmovers@ozemail.com.au

To Whom It May Concern:
Re, Yass Valley Wind Farm MOD 1

19-11-2018

The aerial photos taken clearly show the erosion that is taking place with NO infrastructure in place. To try and build on such steep erodible country is asking for an environmental disaster.

Land use, The Soil Conservation Service of NSW made a land use table purely to prevent the misuse of land to prevent any erosion or wrongly placed developments. This is a perfect example of why the table was made to prevent a large scale development like this causing non repairable damage to the land scape. It also clearly states the land over 18 dec slope should not be cleared and not be developed upon. Why than is this being considered ?

As you can see this has been cleared and is eroding, By putting the infrastructure needed to build the towers, roads etc this will be asking for trouble. You will be able to see it clearly from the Hume Hwy so all that travel the Hwy will be able to complain and make comment on WHY was this allowed to happen.

Once the roads are in place the water runoff will be likened to coming of a tin roof. 100% run off will cause a massive problem for any contractor on these slopes to mitigate any or all mitigations of soil sed control. It will not matter who implements the work or who polices the work and makes sure that everything is in place.
THIS WILL NOT WORK AND BE AN ENVIRONMENTAL DISASTER !

For a project to be even considered in such a place as this is beyond me. We have more suitable places that would not cost as much to construct and also not cause such a cost on the environment, There are other power lines in NSW.

If you need to ask me anything I would be happy to talk or meet with whoever.

Regards

Andrew Field

YASS EARTH MOVERS



Example of the steepness of this terrain



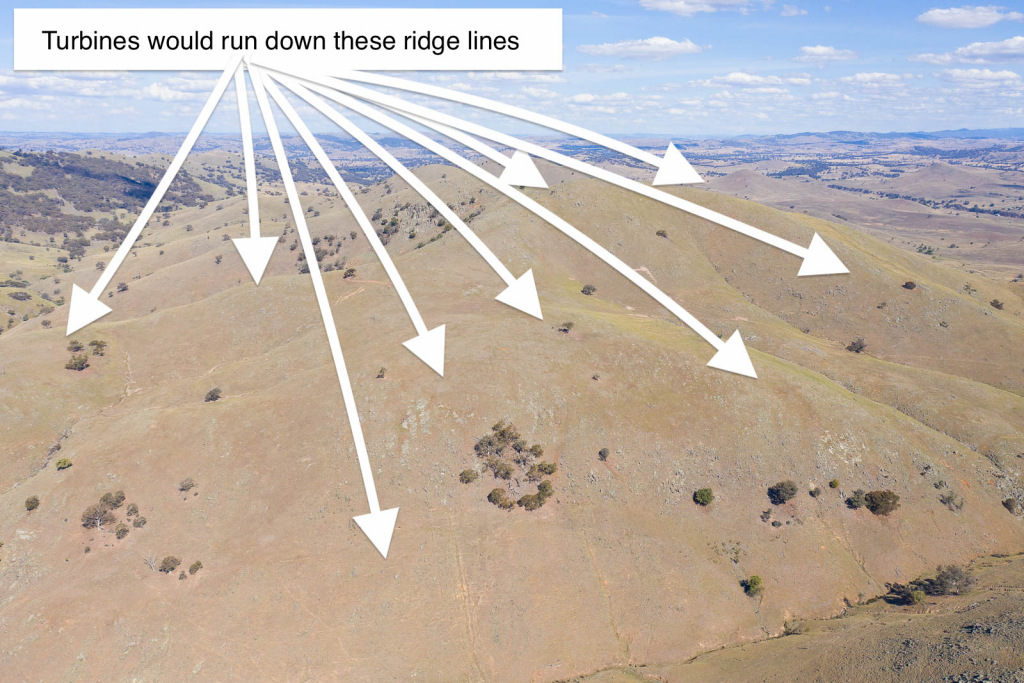
Example of the steepness of this terrain



Example of the steepness of this terrain



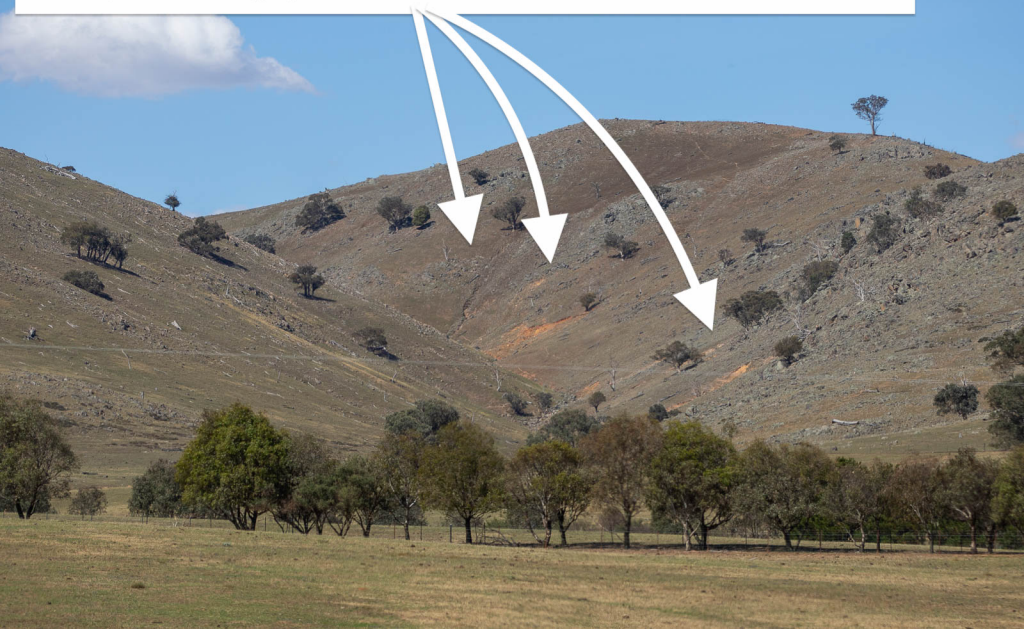
Turbines would run down these ridge lines



Steepness and existing scouring (turbines 41 to 44 in this location)



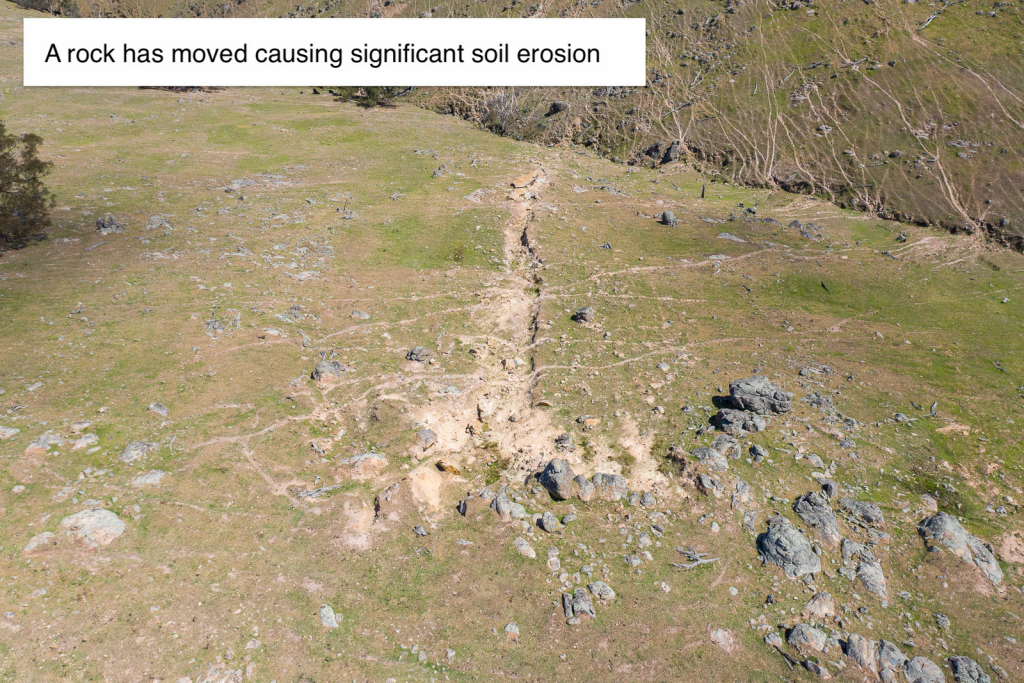
Example of the fragility of the land turbines will be sited above this erosion.



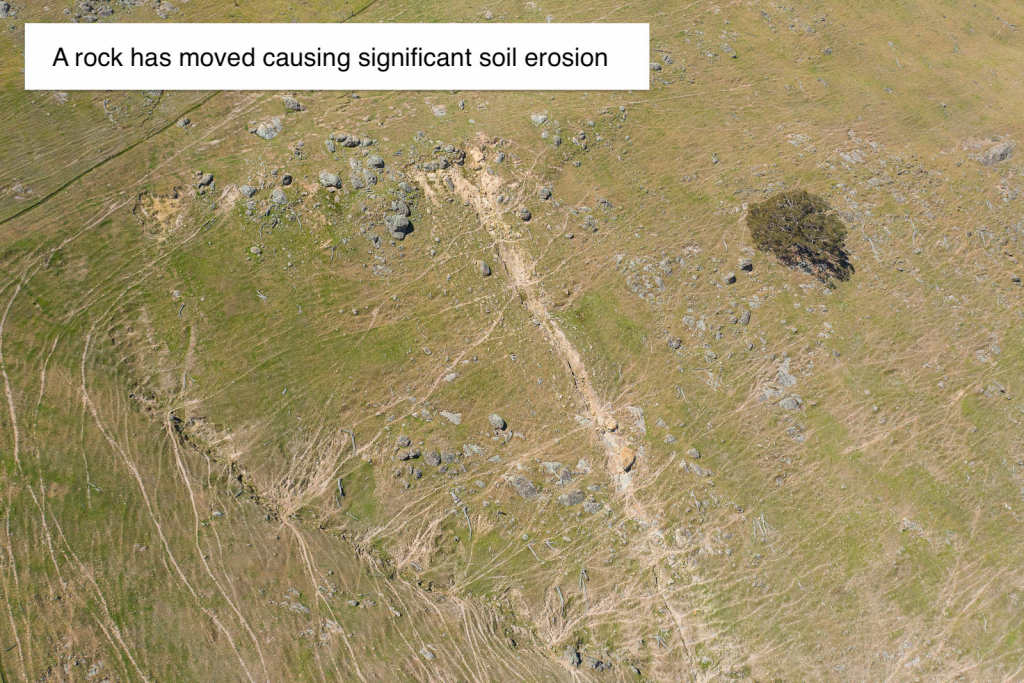
Example of the fragility of the land turbines will be sited above this erosion.



A rock has moved causing significant soil erosion



A rock has moved causing significant soil erosion



A rock has moved causing significant soil erosion



The road that the tour travelled on:
Water runoff from this road has already caused serious erosion



The road that the tour travelled on:
Water runoff from this road has already caused serious erosion



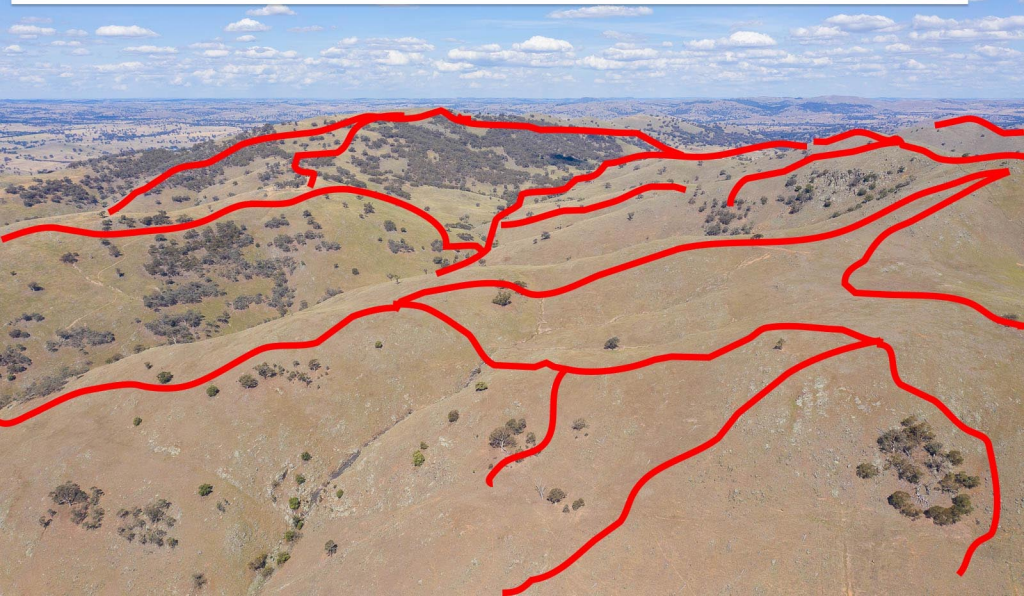
The hills of Copperbella are far steeper and tighter than those in the image supplied to us.

If even possible, building roads stable enough to support trucks carrying such large turbines will destroy this environment and cause irreversible erosion.

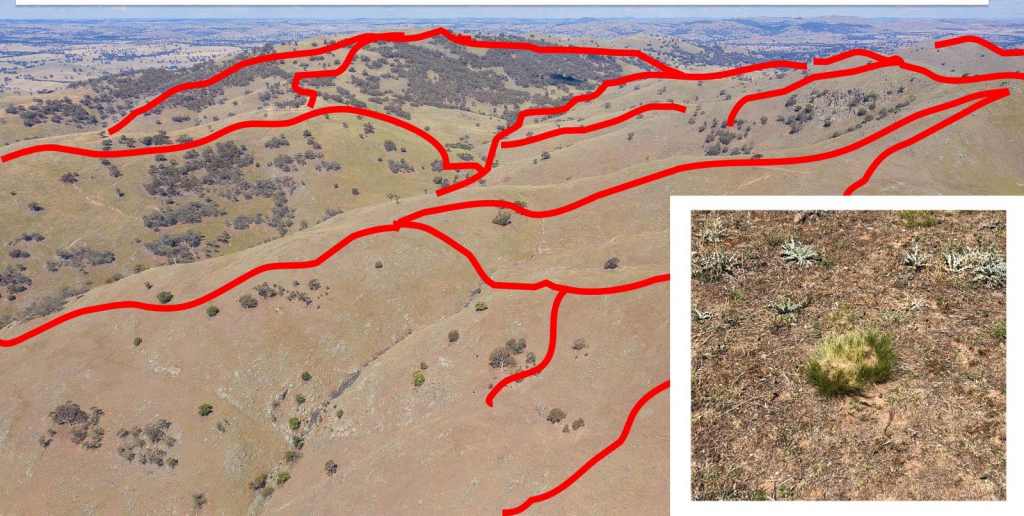




Example of network of roads that are proposed through this steep and challenging terrain.



The November visit also highlighted the need to control weed population, e.g. Tussock weed as seen and scotch thistles to name a few. The terrain will require aerial spraying due to its steepness however this will not be possible due to the height of the turbines



Trees and wildlife are immediately threatened in this area.

During the November visit, 5 Eagles were spotted who's homes would be destroyed





Proposed site for the concrete plant. Control of waste water will be difficult and the potential for waste water to flow down the hills side causing erosion is high. If this was to occur then the surrounding productive farm land would be polluted as well as surrounding streams.

View from this site showing potential run off areas.



Surrounding area that will be able to see the turbines

